



Germann Road Corridor Improvement Study Power Road to Ironwood Road

A Planning Assistance for Rural Areas Study

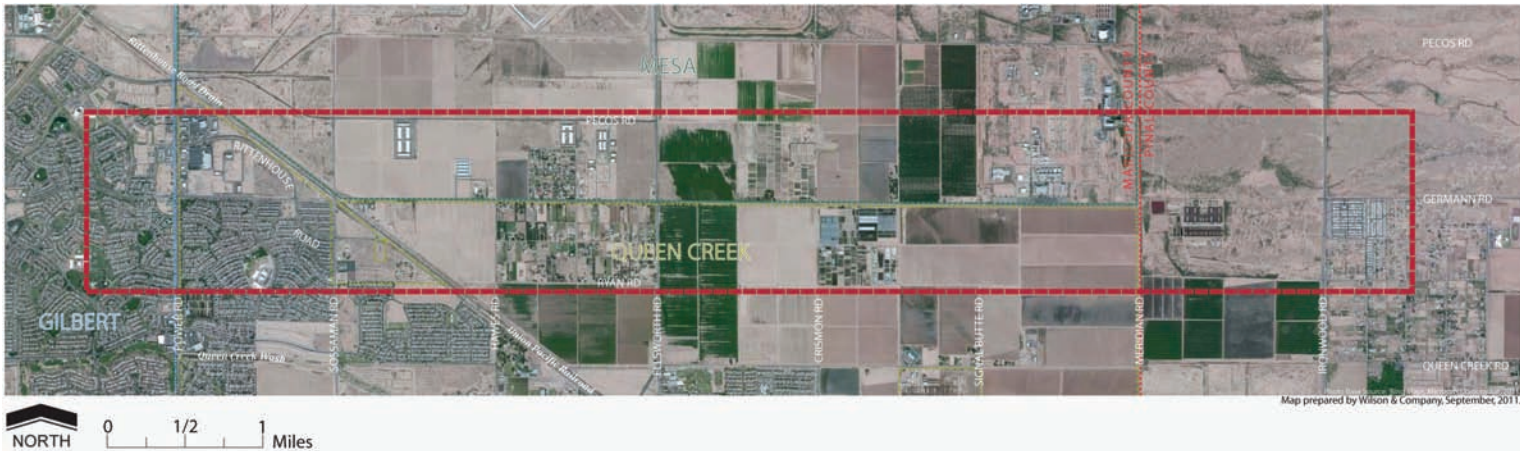
October 2011

Study Overview

The Germann Road Corridor Improvement study will establish the ultimate location, number of lanes, and roadway required to accommodate forecasted traffic growth and enhance safety for the portion of Germann Road between Power and Ironwood roads. The study will provide ADOT, the Town of Queen Creek and surrounding jurisdictions with a time frame for construction of future roadway improvements over the next 5, 10 and 25 years. The study will also help to define the best configuration for a grade-separated crossing at the railroad near Sossaman Road.

Study Area

The study area consists of approximately one-half mile north and south of the existing Germann Road alignment between Power and Ironwood roads.



Study Timeline

Fall 2011: Introduce project to public and stakeholders and receive feedback on opportunities and study goals

Winter 2011/2012: Test alternative improvement strategies

Spring 2012: Present alternative improvement strategy results to public and stakeholders and receive feedback

Summer 2012: Finalize recommendations and prepare final report

Study Contact

Bret Anderson

Project Manager

Arizona Department of Transportation

Phone: 602-712-8144

E-mail: BAnderson@azdot.gov

Public Outreach

Input from residents, businesses and stakeholders within the study area is crucial to the success of this study. The first opportunity to learn about the project and to provide feedback will be at a Public Open House **Thursday, November 17, 2011 from 6 - 8 p.m.** at:

Queen Creek Branch Library
Zane Grey Conference Room
21802 Ellsworth Rd.
Queen Creek, AZ

Public and stakeholders are also encouraged to visit the study website for more information and to follow the process.

