



TOWN OF
QUEEN CREEK
ARIZONA

Air Quality PM-10 Rapid Response Action Plan



August 3, 2011

Ramona Simpson, Management Assistant II



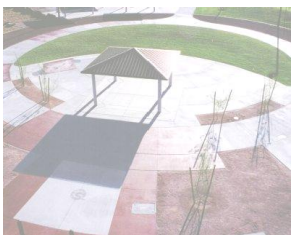
Background

- April 15, 2004 – U.S. Environmental Protection Agency (EPA) designated portions of Maricopa County, including Queen Creek and Apache Junction (Area A), as a severe Non-Attainment area*.
- Dec 31, 2006 - Area A failed to reach attainment of federal PM-10 standards.
- Dec 31, 2007 – MAG submitted 5% Plan to EPA
 - Included 55 measures to reduce PM-10 emissions over 3 years

*Non-Attainment is an EPA designation for failure to meet Federal Air Quality Standards

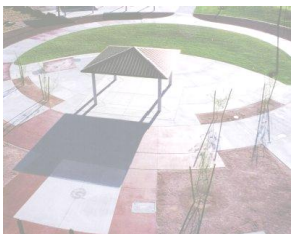
Background

- January 25, 2011 – Arizona Dept of Environmental Quality (ADEQ) withdrew the MAG 2007 5% Plan for PM-10.
 - Benefits for withdrawal
 - EPA will not impose Federal Implementation Plan
 - MAG only needs to submit a complete plan for conformity freeze to be lifted
 - Plan needs to be submitted by January, 2012 to stop sanctions clock
 - If three years of clean data can be obtained prior to the submission of the Plan, it may be possible for EPA to issue an attainment finding



Background

- If EPA determines plan as not “complete”, EPA could reject Plan and sanctions clock could re-start.
 - August 2012 – Tighter controls on major industries (2:1 offsets in emissions)
 - February 2013 – Loss of federal highway funds (\$7.4B MAG Transportation Improvement Program)
 - Federal implementation plan imposed



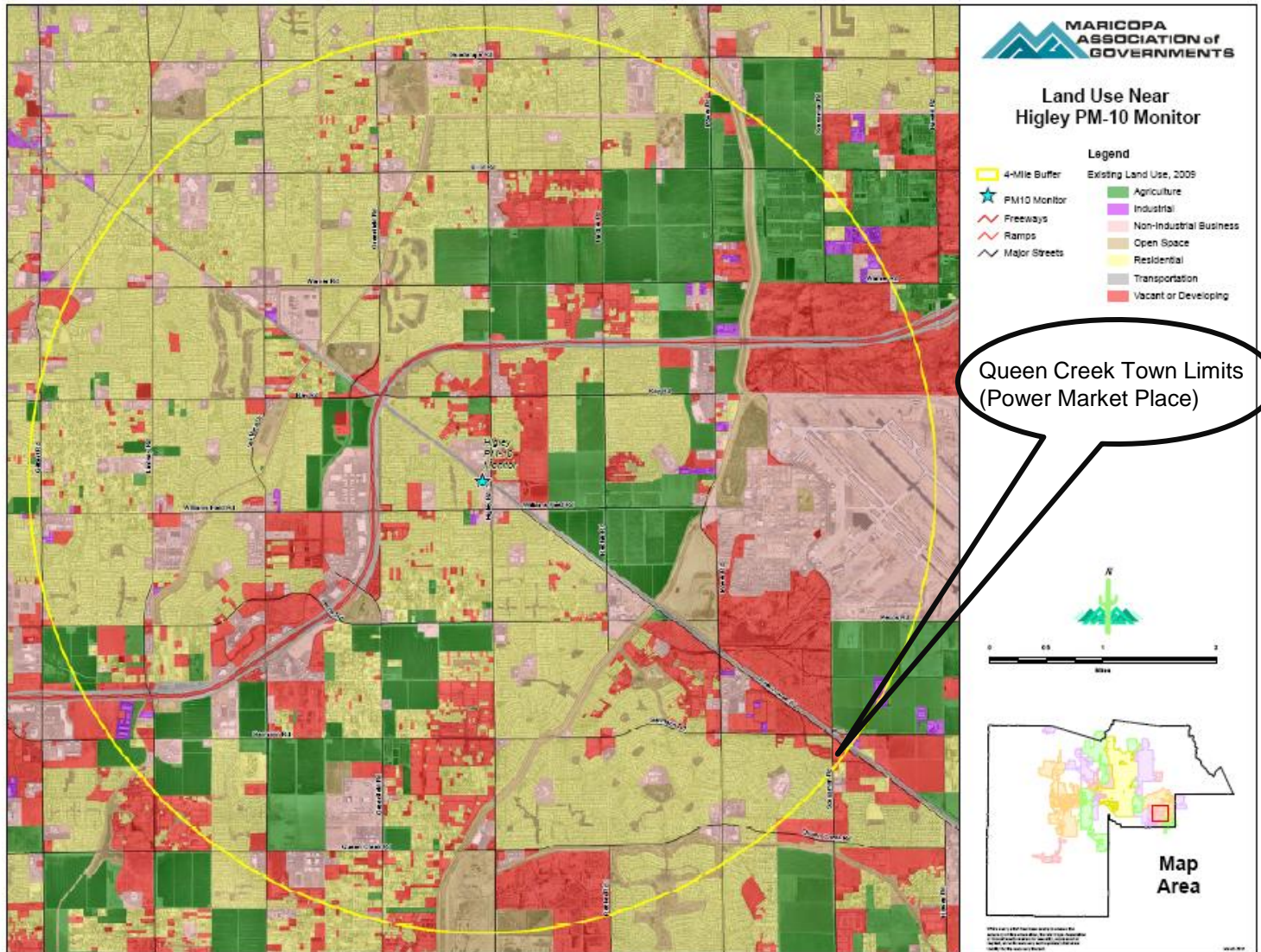
High Wind Events



- EPA has informally indicated that 2009 may be a clean year
- There were no exceedances at the monitors in 2010
- EPA could issue an attainment finding which would suspend the need for a 5% Plan
- The area would need to remain in attainment and prepare a “Maintenance Plan”
- EPA’s direction is to implement measures to control dust during High Wind Events



Higley PM-10 Monitor 4-Mile Buffer





PM-10 Rapid Response Action Plan

1) Identify Resources:

- Public Works Department
 - Streets & Environmental
 - Primary Contact: Ramona Simpson
 - Secondary Contact: Jan Martin



2) Internal Operations

- Distribute monitor and “hotspot” maps
 - Public Works – Streets/Parks & Rec Grounds
 - Utilities
 - HPEC
 - Neighborhood Preservation
 - MCSO





PM-10 Rapid Response Action Plan

3) Identify Town Dust Control Ordinances and Codes

– 10-7-4

- Restrict Vehicle Parking



– 10-7-5

- Restrict Off-Highway Vehicle Usage



– 10-7-6

- Enforce Stabilization for ingress/egress areas for commercial buildings and areas 3,000 sq ft or larger for residential buildings



– 10-7-7

- Ban leaf blower debris in public roadways





PM-10 Rapid Response Action Plan

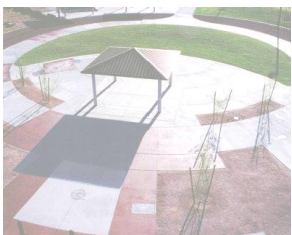
4) Action Plan

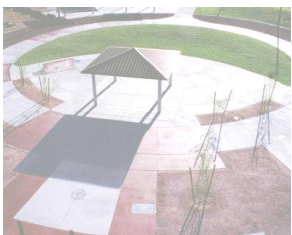
- Inspection by primary contact day before forecasted high risk event
 - Town Dust Generating Operations
 - Hotspots under Town Control
- Forward ADEQ notifications to applicable department contacts
- Notify appropriate individuals from sources not under Town control
- PM-10 Rapid Response Event Log
- After event “lessons learned” review



Impacts

- Minimal Impact to Town Resources
- Goals of PM-10 Rapid Response Action Plan:
 - Increased Awareness
 - Increased Internal Inspections
 - No Exceedances at the Monitors
 - Three Years of Clean Data
 - No 5% Plan Requirement
 - Maintenance Plan Only
 - **Higher Quality Air!**





Questions?