



TOWN OF
QUEEN CREEK
ARIZONA

Sonoqui Phase II IGA Design Closeout

Troy White, Public Works Division Manager

June 15, 2011

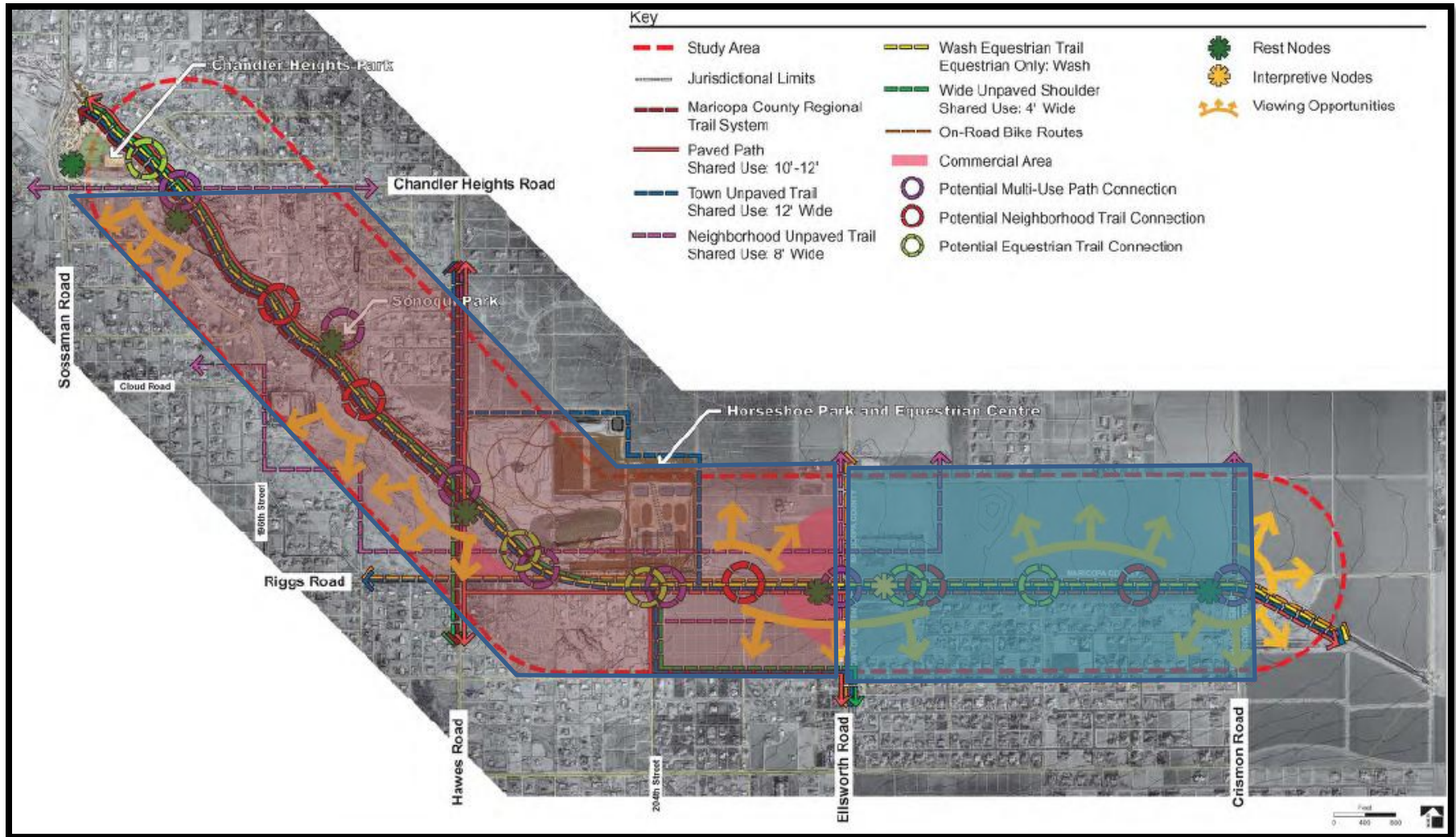


Sonoqui Phase II

History:

- The IGA with the Flood Control District (FCD) for Design of the Sonoqui Wash Phase II was approved by Council in July 2008
- Purpose of the project was to confine the floodplain to within the banks of the wash channel
- Town and FCD 50% cost share for design
- Design scope not completely determined at the time of the IGA
 - Council approved an estimated amount of \$1.2 million dollars with the FCD invoicing the Town a final invoice upon completion
- Town responsible for utility relocation during construction
- District responsible for construction of Phase IIA (amended)





Sonoqui Phase II

Value added design features:

- Bridge design work
- Extension of Hawes Road box culvert
- Wash Preserve areas
- Trail Connections to neighborhoods and HPEC
- Country Park Estates tributary
- Other misc. change orders



Sonoqui Phase II

Bridge design work:

- Bridge not part of original design
- Original design called for low flow crossing
- Town and FCD met with Maricopa County Department of Transp. (MCDOT)
- July 2010 MCDOT approved bridge



Sonoqui Phase II

Bridge benefits:

- No road closures during significant rain events
- Uninterrupted travel to Horseshoe Park
- No street maintenance for road closures and culvert cleaning
- No ground crew maintenance for erosion repair
- Trail users do not have to cross 5 lane road







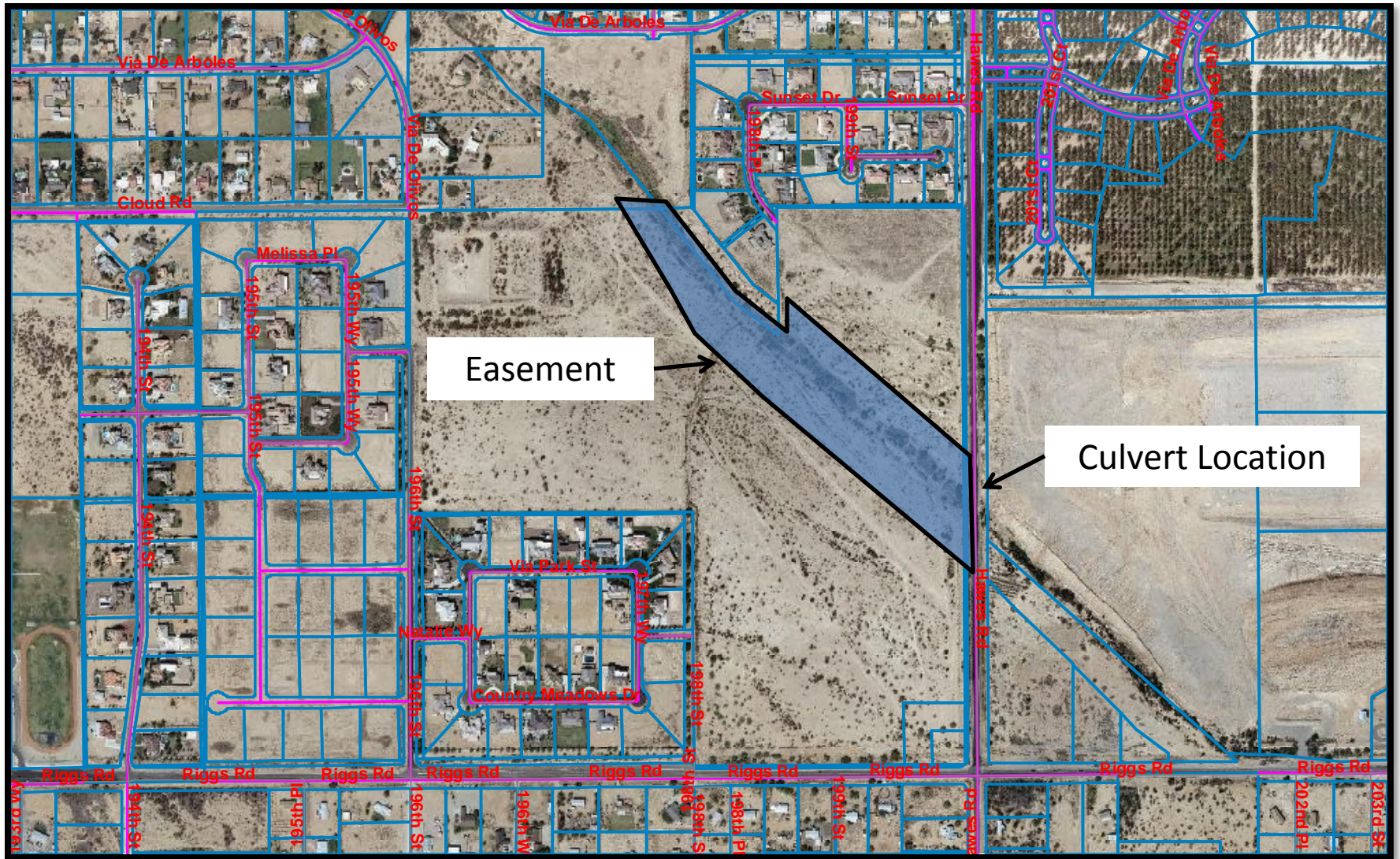
Sonoqui Phase II

Extension of Hawes Road Box Culvert:

- IGA stipulated Town would receive utility relocation credits for project easements obtained
- Agreement with Country Park Estates for drainage easement
- Developer received box culvert extension in return for granting easement to the Town
- Town received credits towards utility relocation reimbursement owed to the FCD



Country Park Estate Easement



Sonoqui Wash Phase II

Wash Preserve areas:

- Community input during open houses-Preserve natural habitats.
- Enhanced trail experience
- Preserve areas designed outside low-flow areas







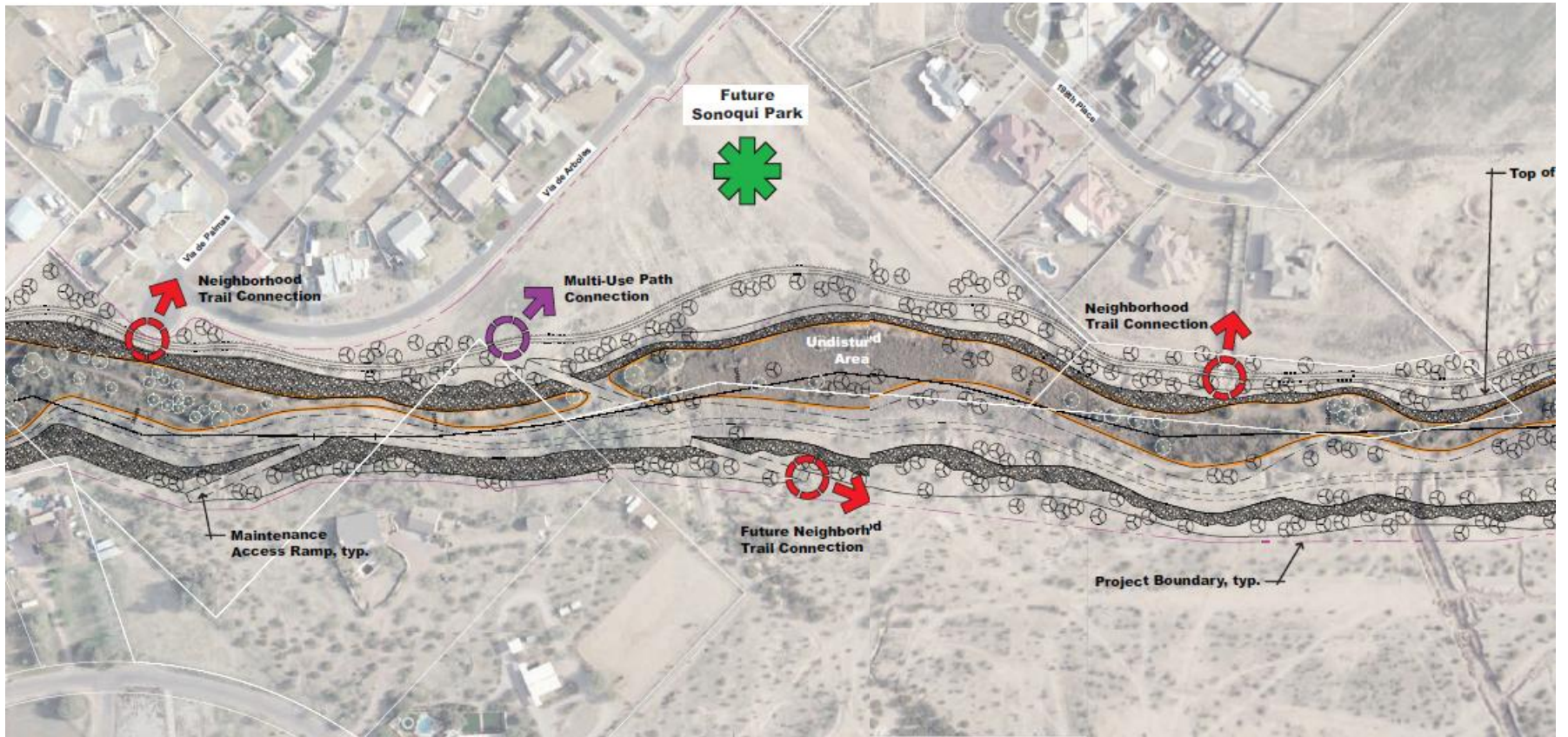
Sonoqui Phase II

Trail Connections:

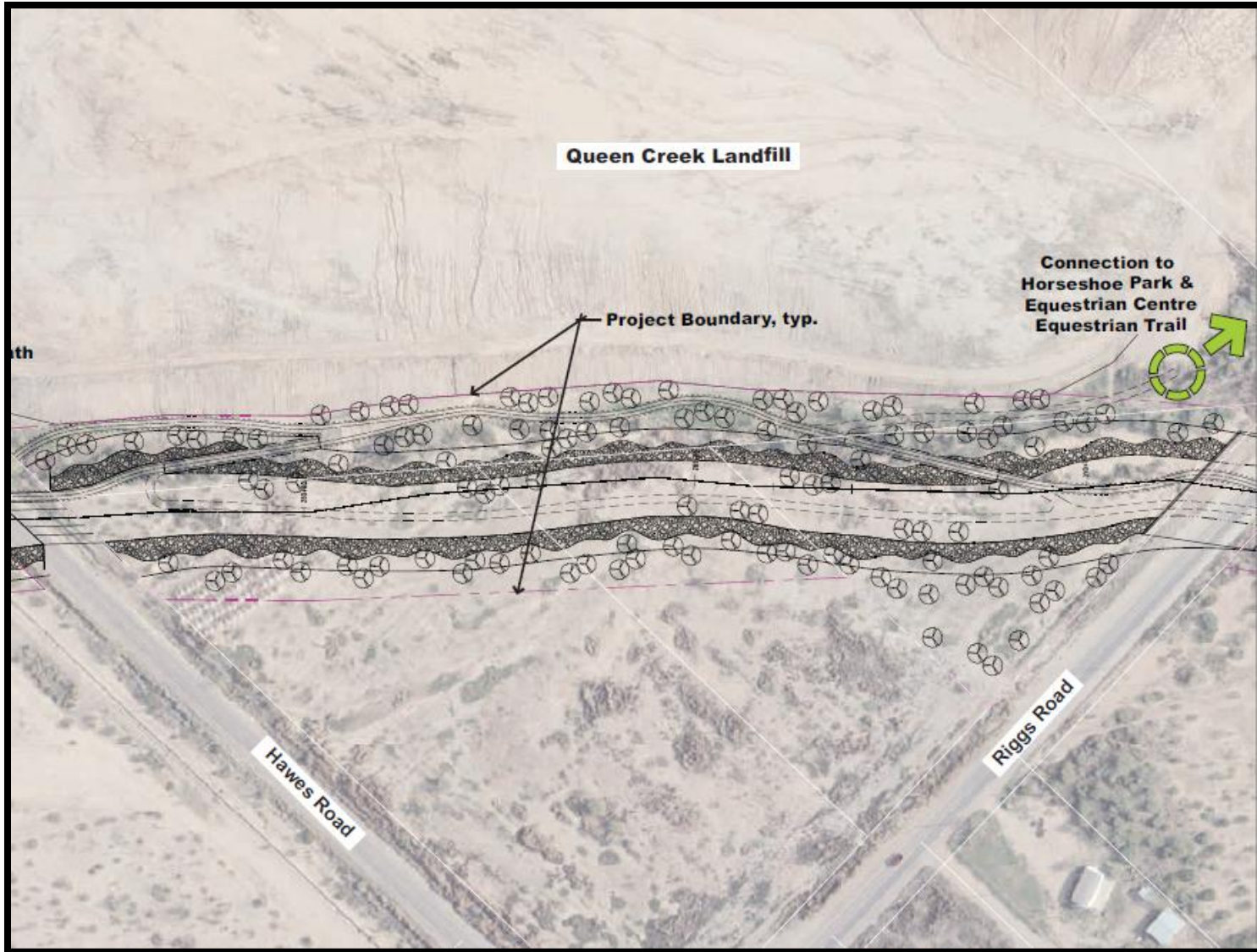
- Added neighborhood and Horseshoe Park trail connection into the wash trail system
- Enhanced connectivity and access



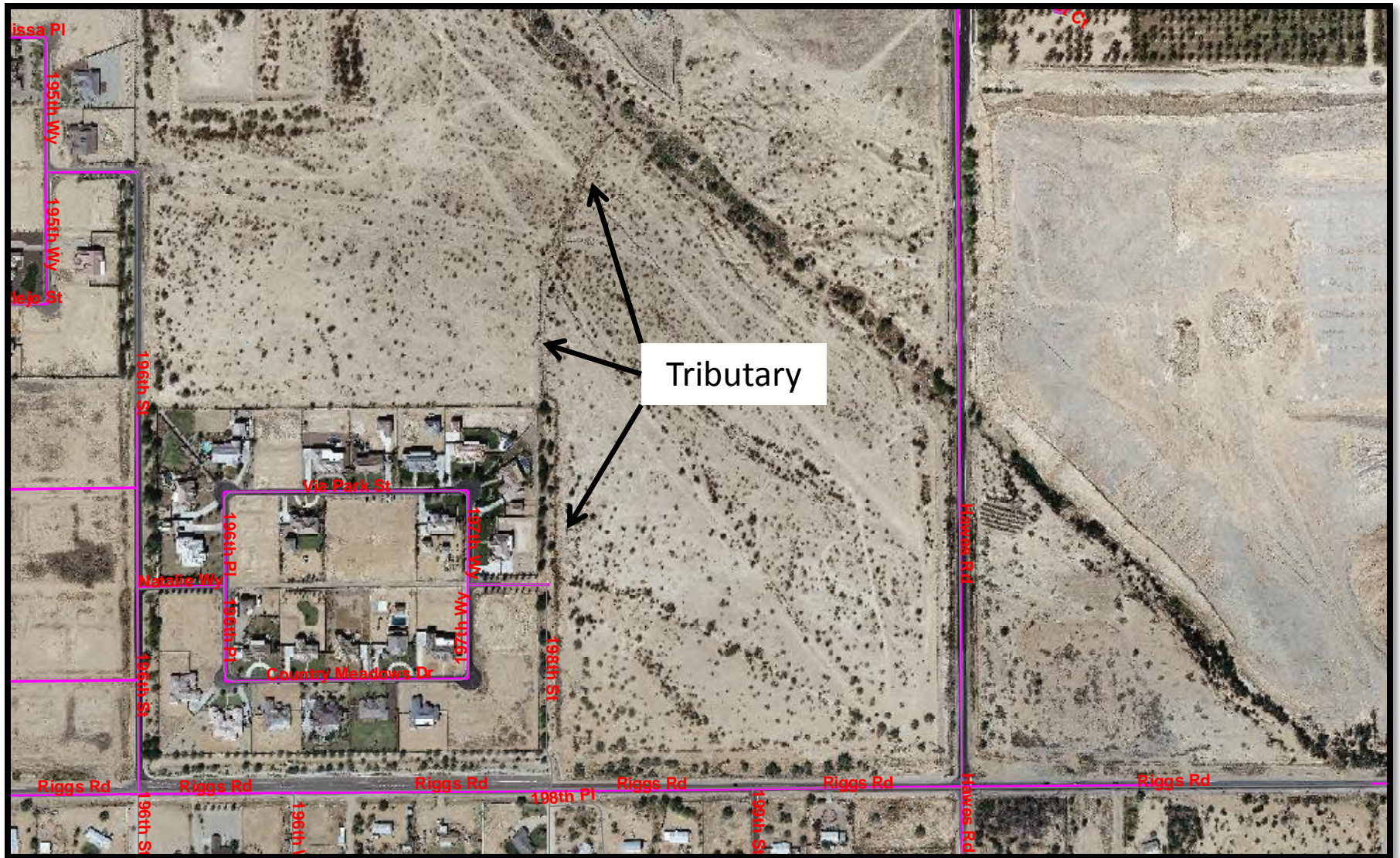
Neighborhood Trail Connections



Horseshoe Park Trail Connection



Country Park Estates Tributary





Questions/Comments