



TOWN OF
QUEEN CREEK
ARIZONA

Update on Regional Transportation

Tom Condit

Development Services Director

June 1, 2011



SR 24 (previously 802) Adopted Alignment



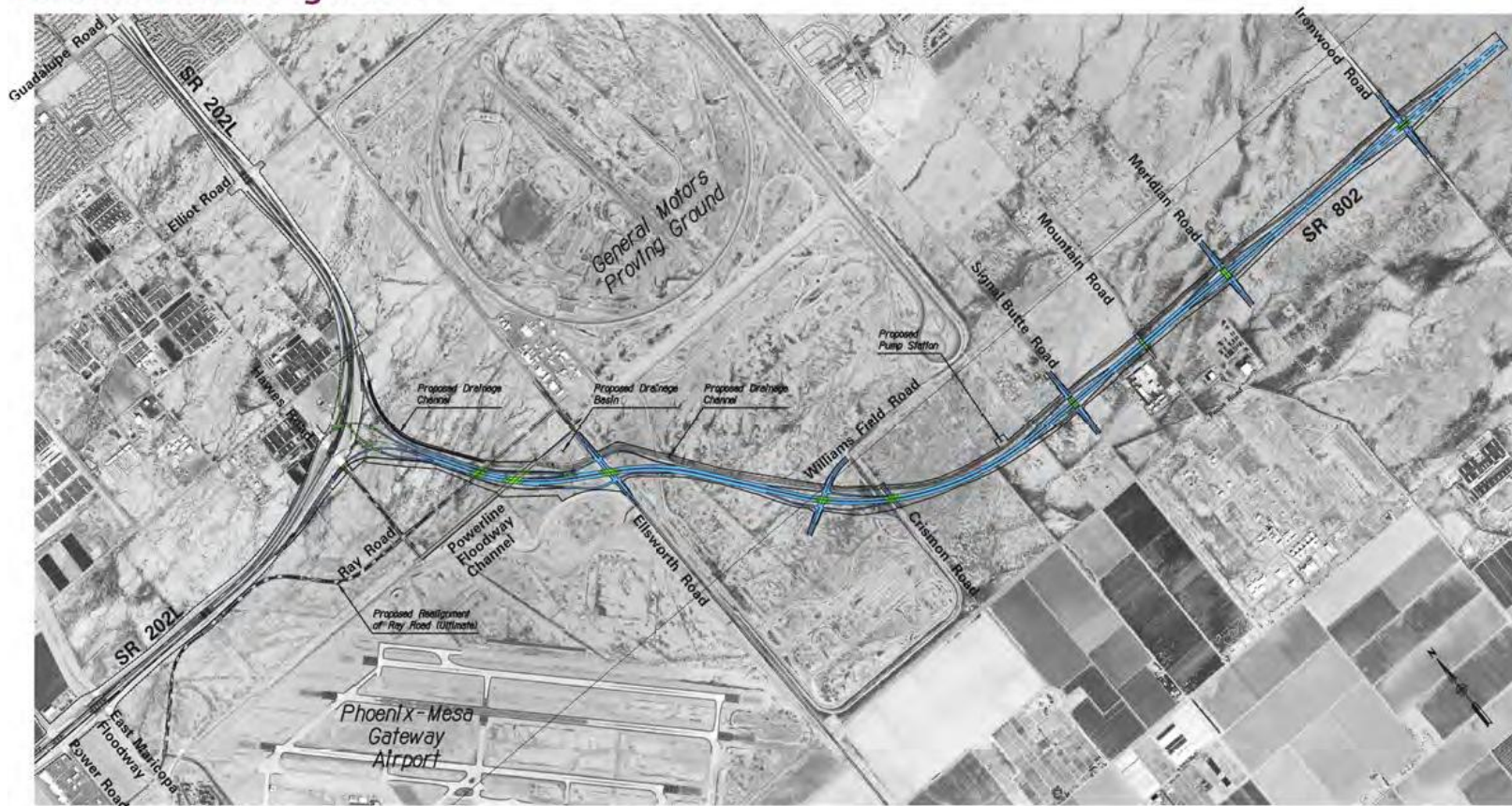
Federal Highway Administration

State Route 802

Loop 202 (Santan Freeway) to Ironwood Road

802 MA 999 H6867 01L NH-802-A(AUG)

Recommended Alignment



2010 RTP Update – SR 24 Freeway Timing



2010 Update
Regional Transportation Plan
Fig. 8-4



Plan Phasing Freeways/Highways

- Phase 1 (FY 2006 - FY 2010)*
- Phase 2 (FY 2011 - FY 2015)*
- Phase 3 (FY 2016 - FY 2020)*
- Phase 4 (FY 2021 - FY 2025)*
- Phase 5 (FY 2026 - FY 2031)*

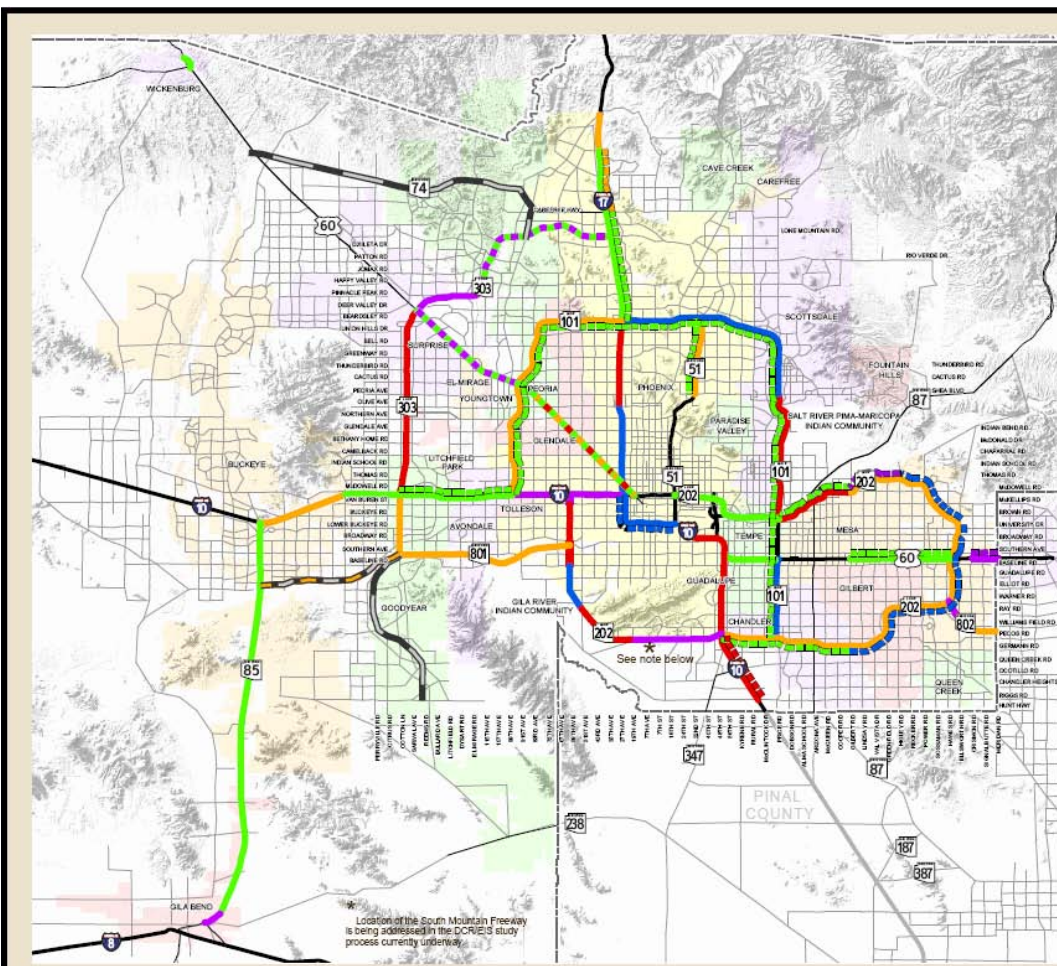
*Broken lines represent HOV lane phasing

- Right of Way Preservation Phase 5, Includes Interim Construction
- Right of Way Preservation Phase 5
- Freeways
- Other Roads
- County Boundary

Alignments for new freeway, highway, arterial, and light rail/high capacity transit facilities will be determined following the completion of appropriate design and environmental studies.



MARICOPA COUNTY



While every effort has been made to ensure the accuracy of this information, the Maricopa Association of Governments makes no warranty, expressed or implied, as to its accuracy and expressly disclaims liability for the accuracy thereof.

© 2010. All Rights Reserved

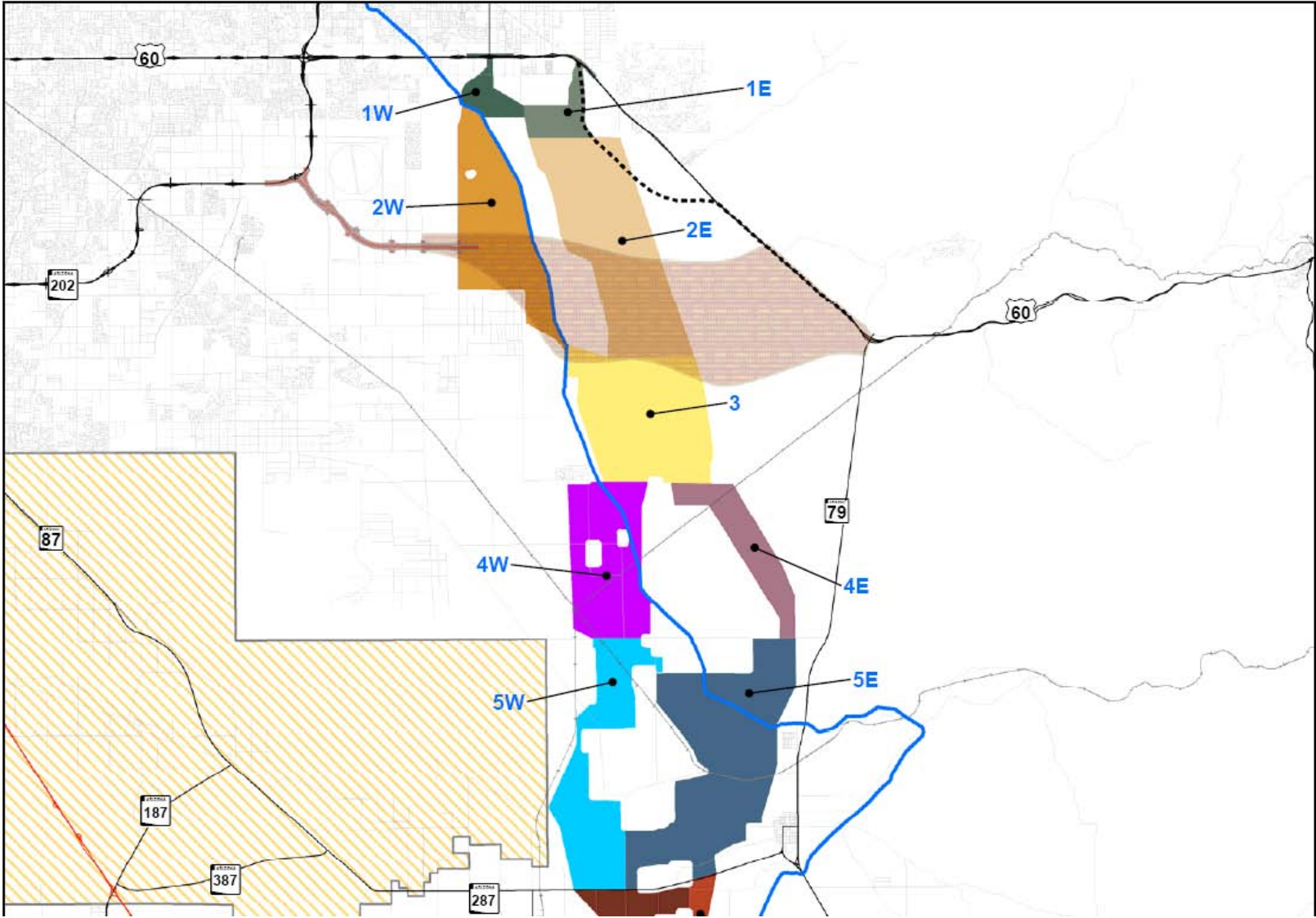


Regional transportation facilities in Pinal County are planned by the Central Arizona Association of Governments (CAAG).

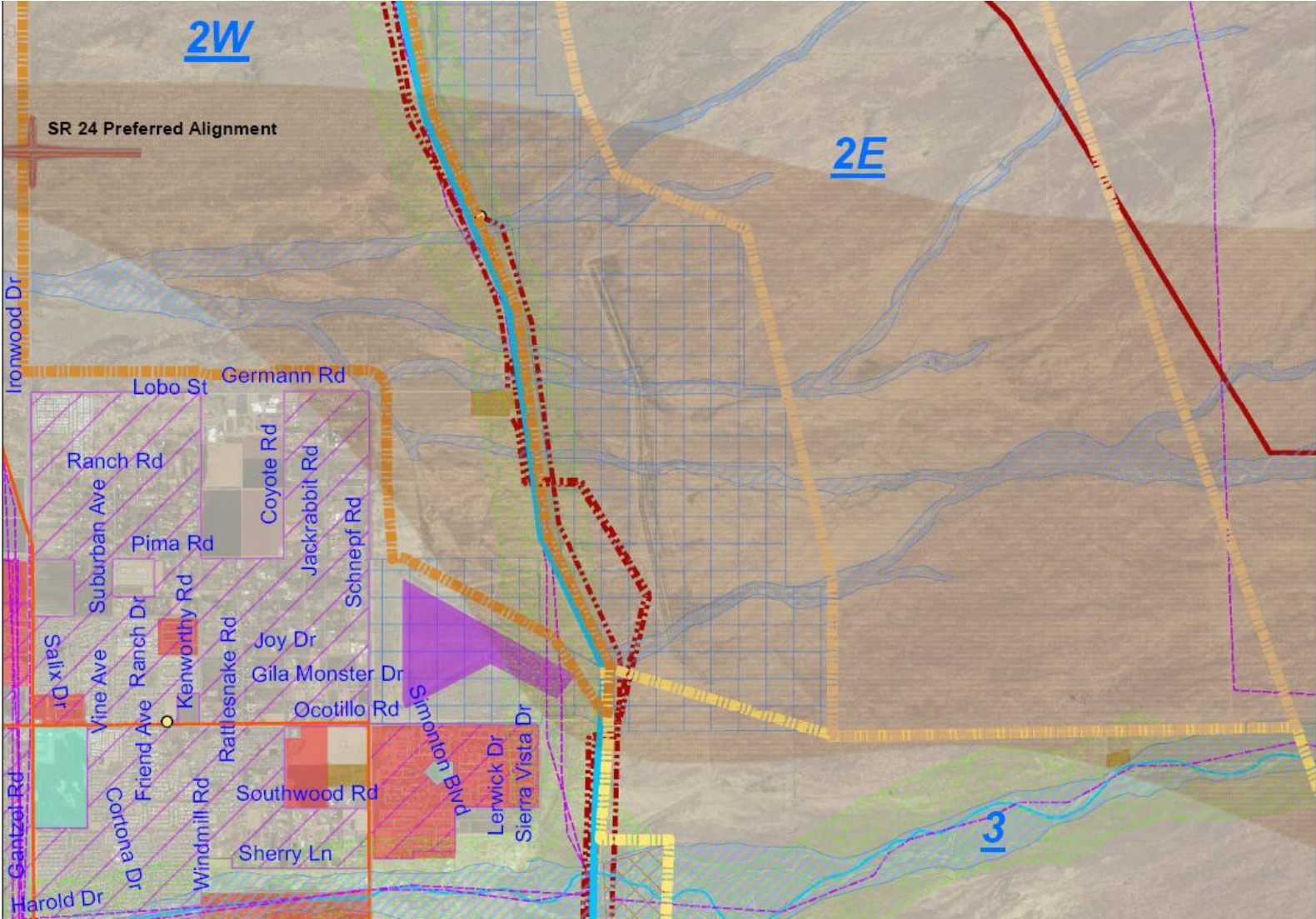
Early concepts for SR 24 east of Ironwood



N-S Freeway Corridor Study Refinements



Freeway Alignment Options near Queen Creek



PARA Grant; Germann Road Power to Ironwood



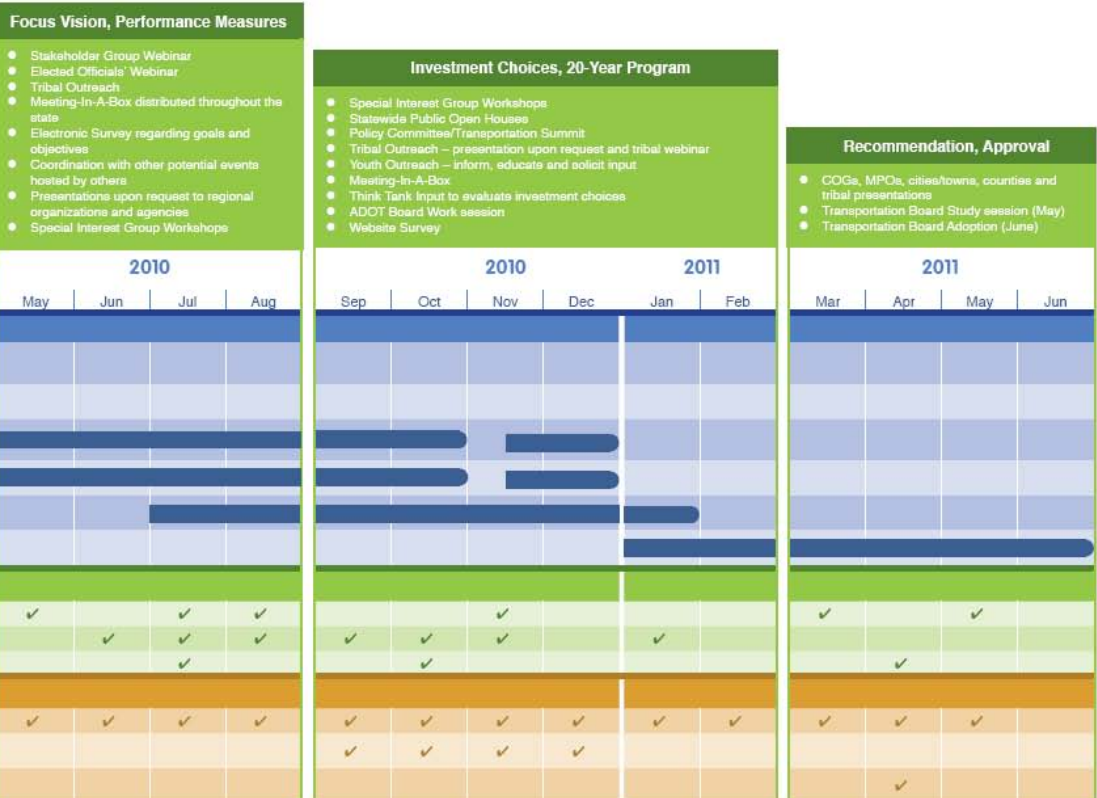
ADOT Long Range Transportation Plan

What Moves You Arizona

A Transportation Plan for 2035

Outreach and Involvement Timeline

Technical tasks will be fully integrated with communication and stakeholder/public involvement activities to strengthen the long-range plan"



<http://www.azdot.gov/5yearprogram/>

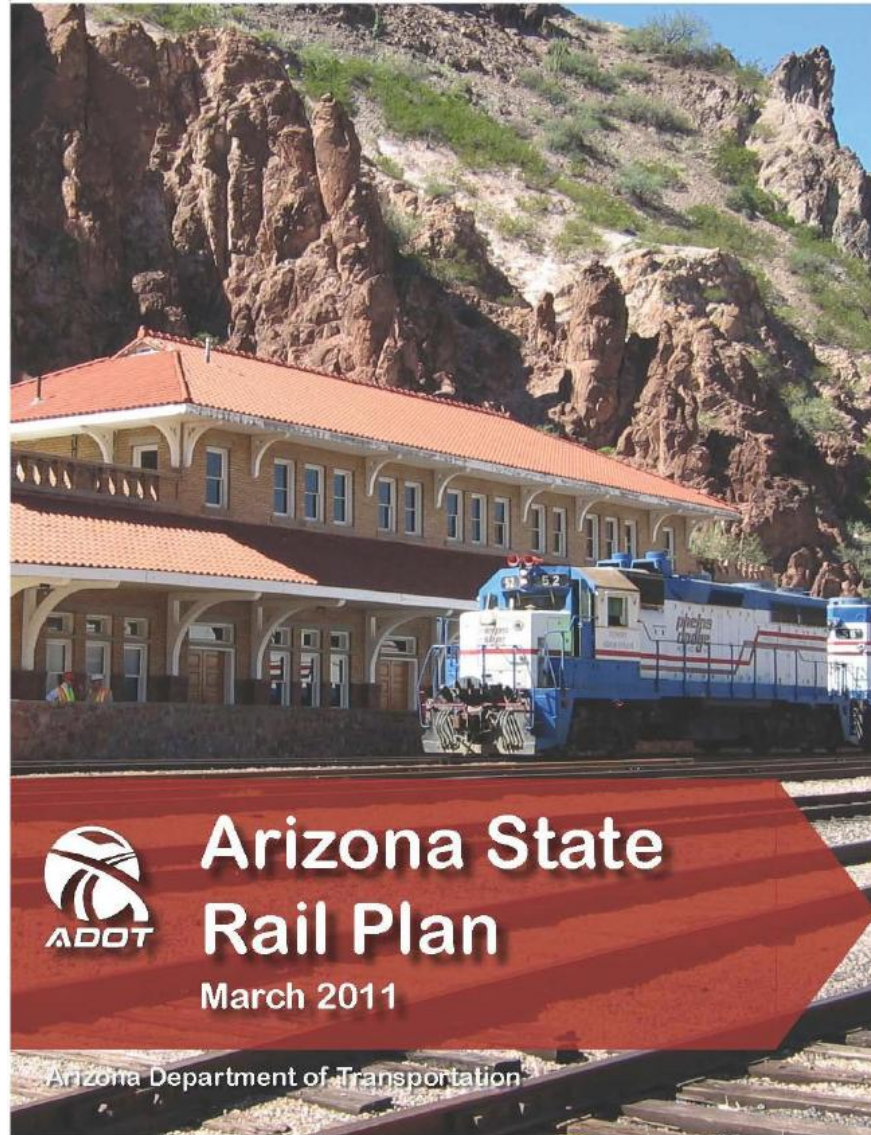
2012
2013
2014
2015
2016

2012-2016 TENTATIVE
Five-Year Transportation Facilities
Construction Program

www.azdot.gov/MPD/priority-Programming/index.asp



http://www.azdot.gov/bqaz/rail_asrp.asp

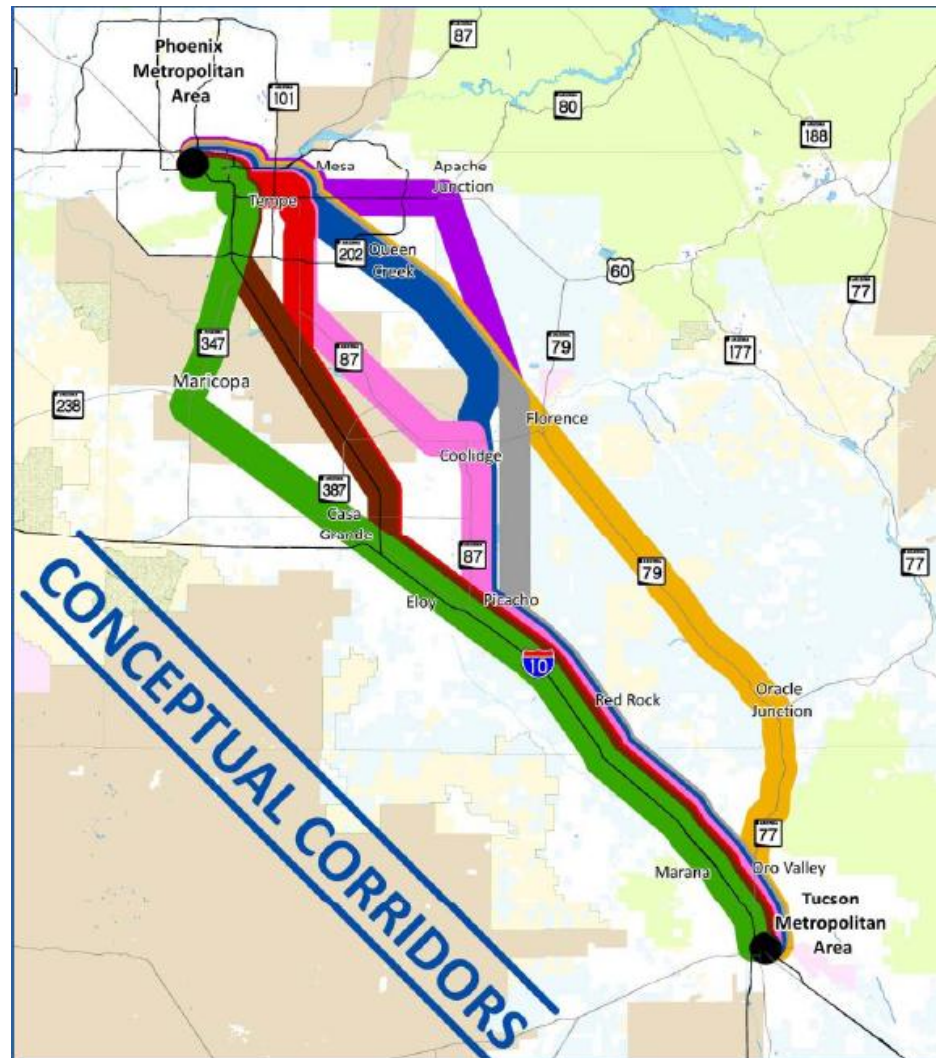


Arizona State Rail Plan

March 2011

Arizona Department of Transportation

Inter-City Rail Corridors

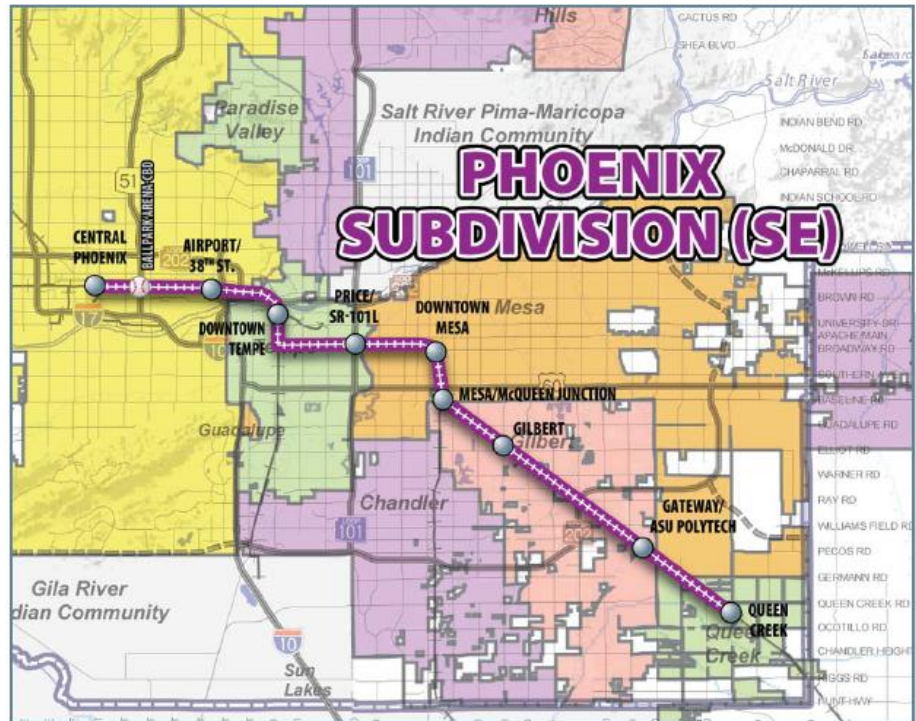


Commuter Rail Study - 2010

START-UP SERVICE SCENARIO 1:

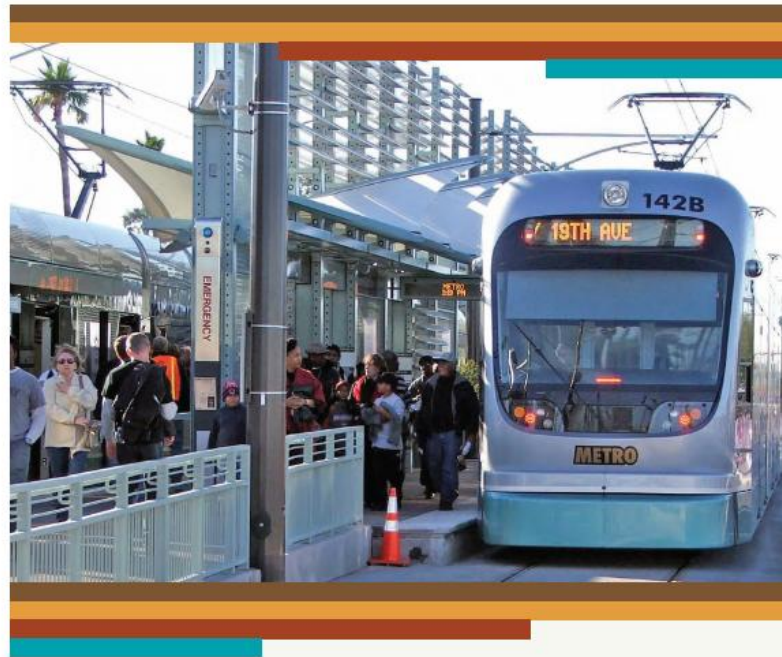
Build the SE Corridor.

The SE Corridor would offer the highest ridership by a significant margin, substantial travel time savings, and would be cost-effective.



Source: URS Corp., 2009.

<http://www.bqaz.org/sustainOverview.asp?mS=m16>



► Sustainable Transportation
& Land Use Integration Study

Working Paper One
Regional Transportation Framework & Issues

Revised April 2011



SUSTAINABLE TRANSPORTATION
& LAND USE INTEGRATION STUDY



MARICOPA ASSOCIATION
of GOVERNMENTS



CAAG - RTP



Introduction - Pinal County Regional Transportation Plan (RTP)

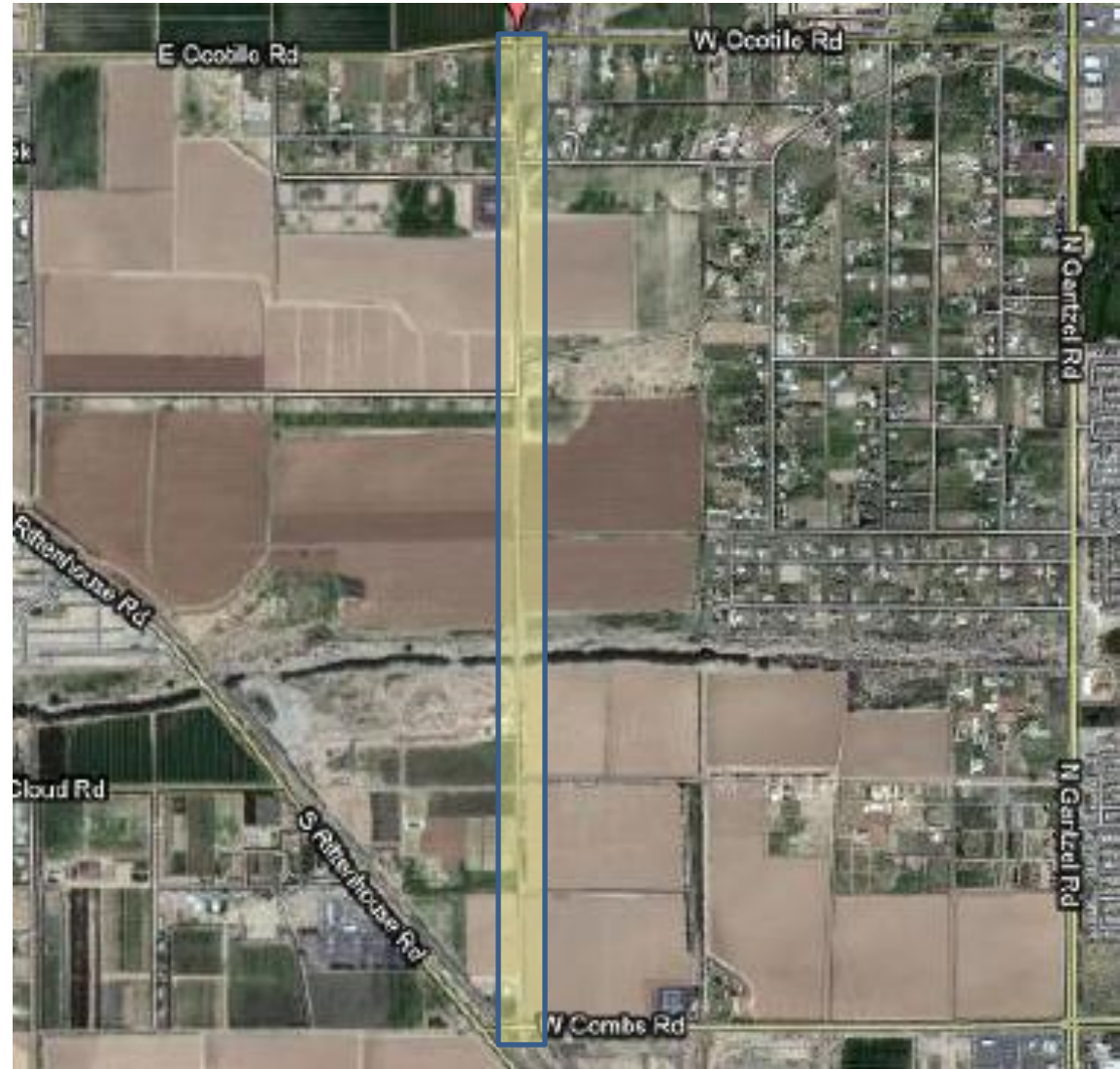
Queen Creek Council
January 19, 2011



Ellsworth – Cloud to Empire



Meridian Road Design Concept Report



Hunt Highway – Empire to Thompson



Pinal County Transit Study



PINAL COUNTY TRANSIT FEASIBILITY STUDY FINAL REPORT

April 2011



Prepared by:





Questions / Comments ?