

TOWN OF
QUEEN CREEK
ARIZONA

Ellsworth Road Ocotillo to Rittenhouse

Tom Condit, PE
Development Services Director

May 4, 2011



Overview

- Improvement of Ellsworth Road between Ocotillo and Rittenhouse
- Part of the larger vision for Town Center infrastructure improvements
- Corridor Planning began 2008
- Project adopted into Town's CIP 2008
- Design Concept Report complete 2009 (joint P&Z, Council meeting)



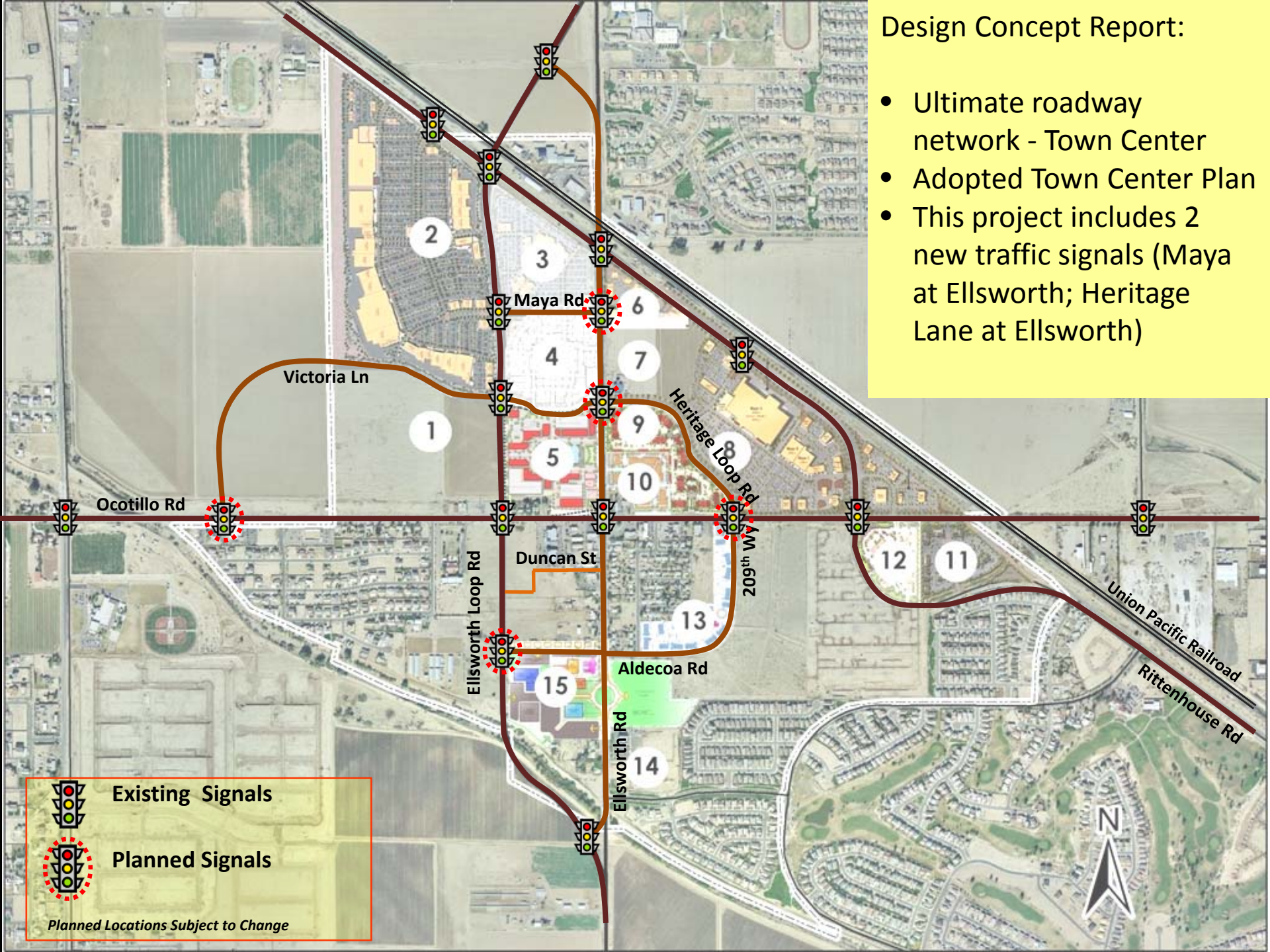
Overview

- Road network incorporated into Town Center Plan 2010; design includes aesthetic features (various pedestrian friendly features)
- Design 100% complete January 2011
- Project includes Victoria Lane improvements (\$180,000 Maricopa County grant received)
- March 29, 2011: 10 bids received; lowest responsible bidder Nesbitt Contracting Co., Inc.



Design Concept Report:

- Ultimate roadway network - Town Center
- Adopted Town Center Plan
- This project includes 2 new traffic signals (Maya at Ellsworth; Heritage Lane at Ellsworth)



Existing Signals



Planned Signals

Planned Locations Subject to Change

Competing Priorities

- Economic Development:
 - Corporate Strategic Plan KRA 8, Obj 3:
Continue and advance strategies to attract and preserve higher educational opportunities, including community colleges and partnerships
 - Corporate Strategic Plan KRA 8, Obj 4:
Evaluate options to deliver advancing infrastructure by the Town in key employment areas of the community (Town Center specifically identified as a short-term priority)



Competing Priorities

- Fiscal Constraints in uncertain times:
 - Corporate Strategic Plan KRA 1, Obj 1: *Monitor, time and sequence the Town's Capital Improvement Program (CIP) to implement when needed, but matched with available revenues.*
 - Corporate Strategic Plan KRA 5, Obj 1: *Maintain long-term financial sustainability for local government operations. Ensure that new programs are properly evaluated based on available revenues, community need and operational sustainability.*



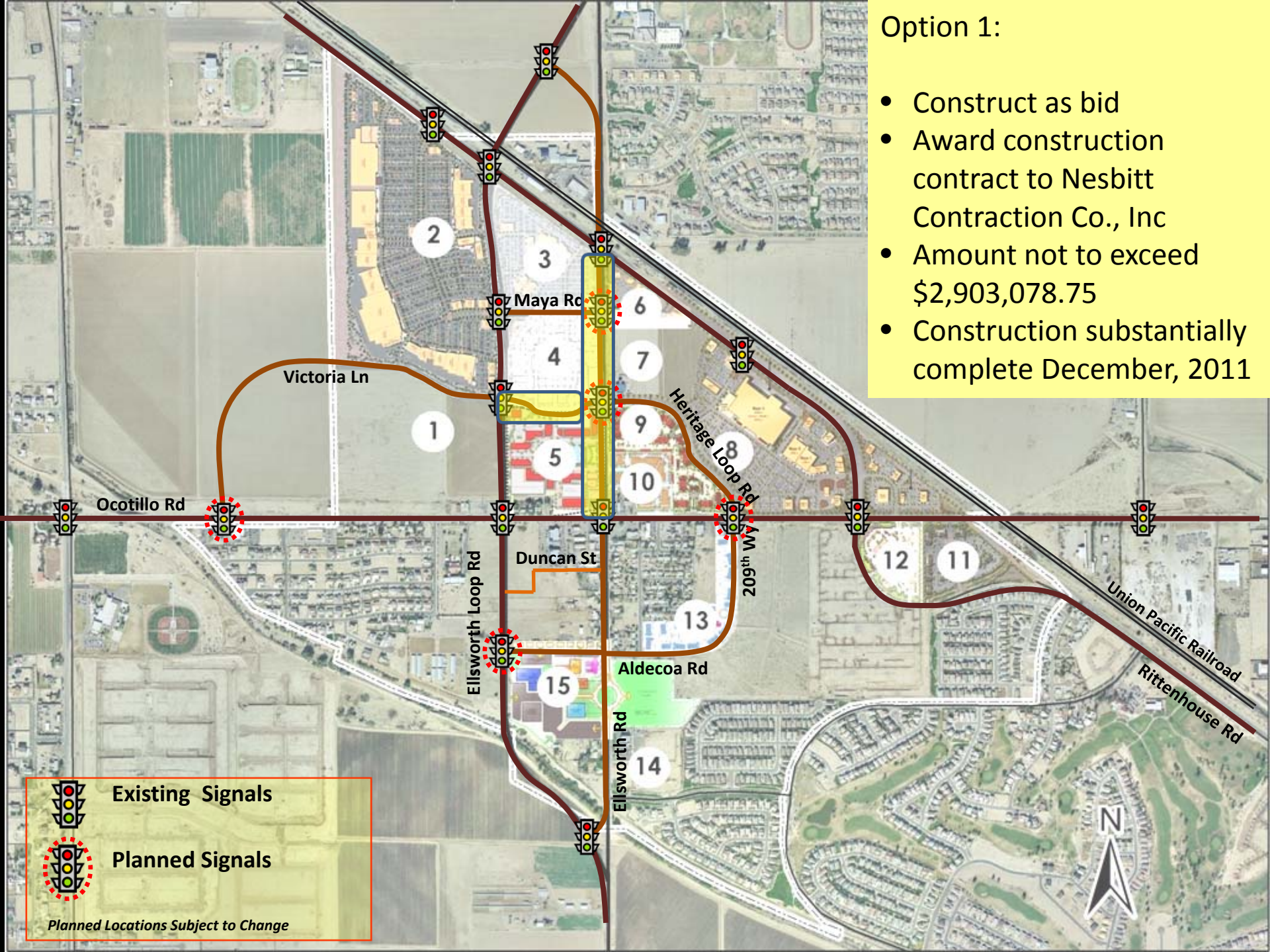
Options for Council Consideration

1. Award Project and construct this year;
2. Approve partial project (Victoria Lane) to maximize grant opportunities, and reprogram remaining project in the future 5-year CIP;
3. Delay the entire project to a future year of the Town's 5-year CIP;
4. Any hybrid of these three options can also be considered by Council and staff will implement.



Option 1:

- Construct as bid
- Award construction contract to Nesbitt Contraction Co., Inc
- Amount not to exceed \$2,903,078.75
- Construction substantially complete December, 2011



Existing Signals

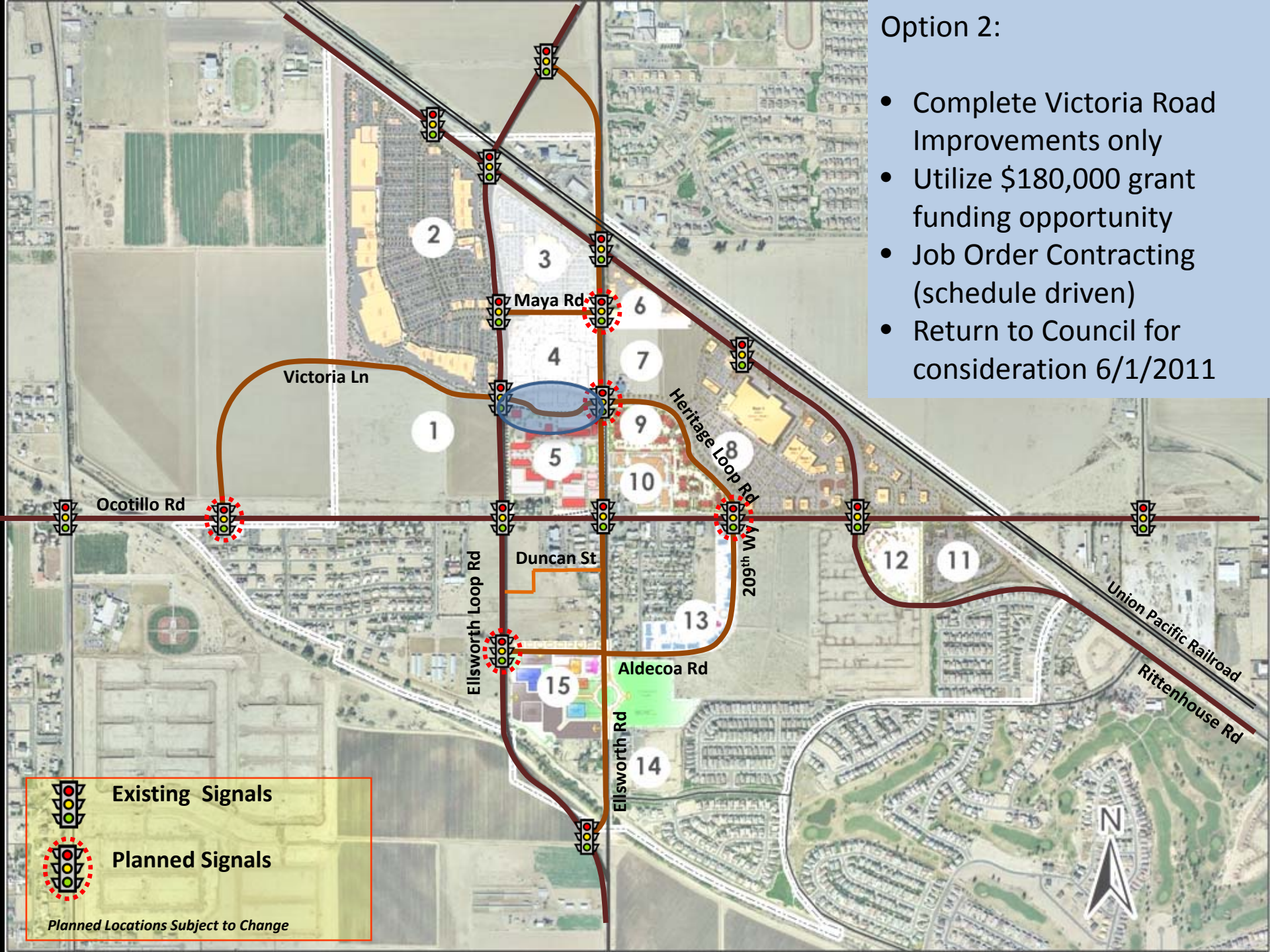


Planned Signals

Planned Locations Subject to Change

Option 2:

- Complete Victoria Road Improvements only
- Utilize \$180,000 grant funding opportunity
- Job Order Contracting (schedule driven)
- Return to Council for consideration 6/1/2011



Existing Signals

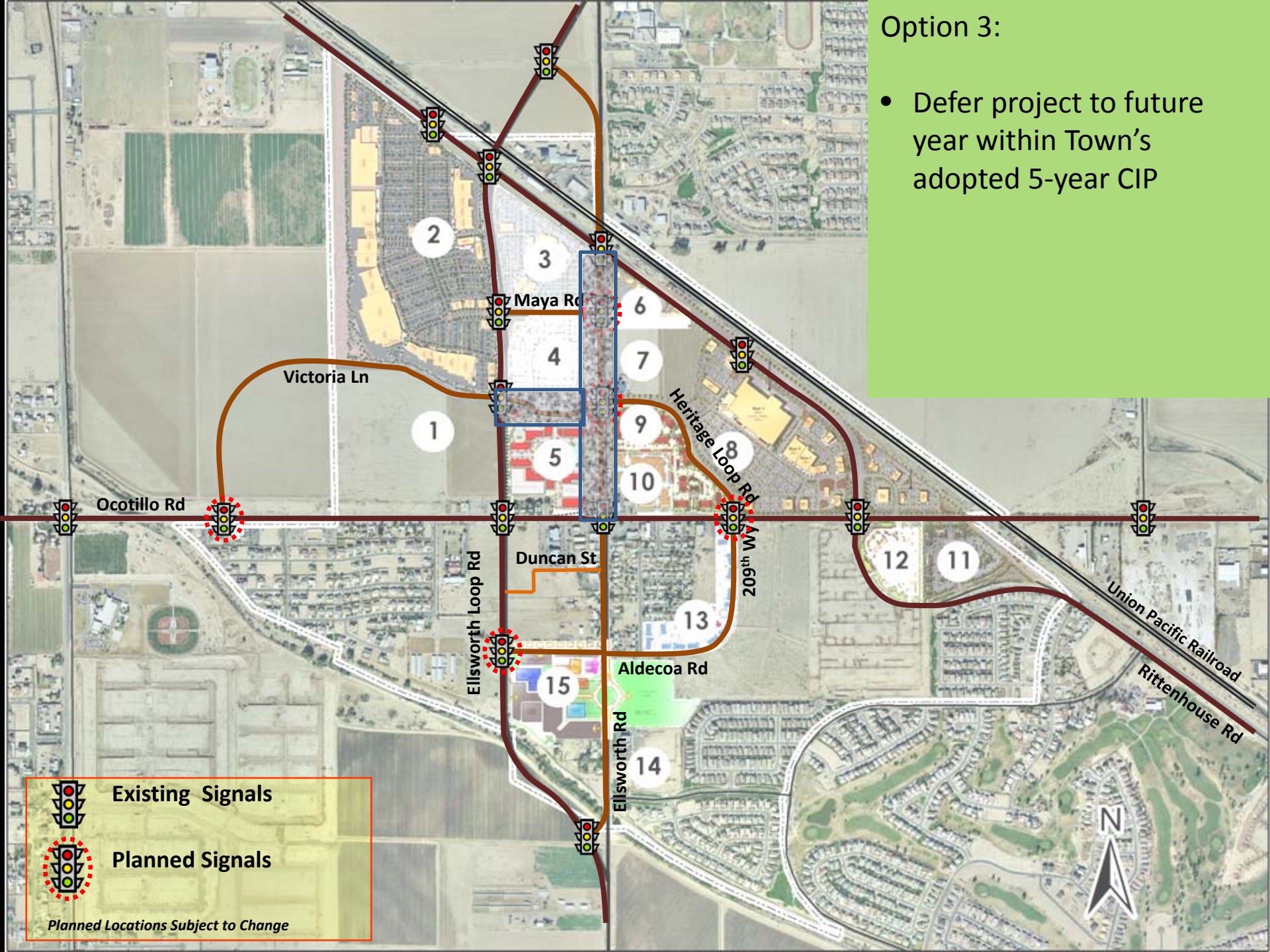


Planned Signals

Planned Locations Subject to Change

Option 3:

- Defer project to future year within Town's adopted 5-year CIP



Existing Signals



Planned Signals

Planned Locations Subject to Change

Staff Recommendation

- Proceed with Option 2
 - Demonstrate fiscal stewardship in postponing substantial (\$2.7M) capital expenditure in the present economy
 - Maximize grant funding opportunity (\$180,000 County grant funding may be “swept” if Victoria Lane improvements not encumbered by June, 2011)
 - Maintain focus on Ellsworth Road within the Town Center as a priority project, to remain identified in the 5-year CIP and funded as soon as economy improves
 - Road maintenance costs not a significant driving issue; can be deferred several years





Questions / Comments ?