



TOWN OF  
**QUEEN CREEK**  
ARIZONA

# Cloud Road Basin – Sossaman Road Drainage Project

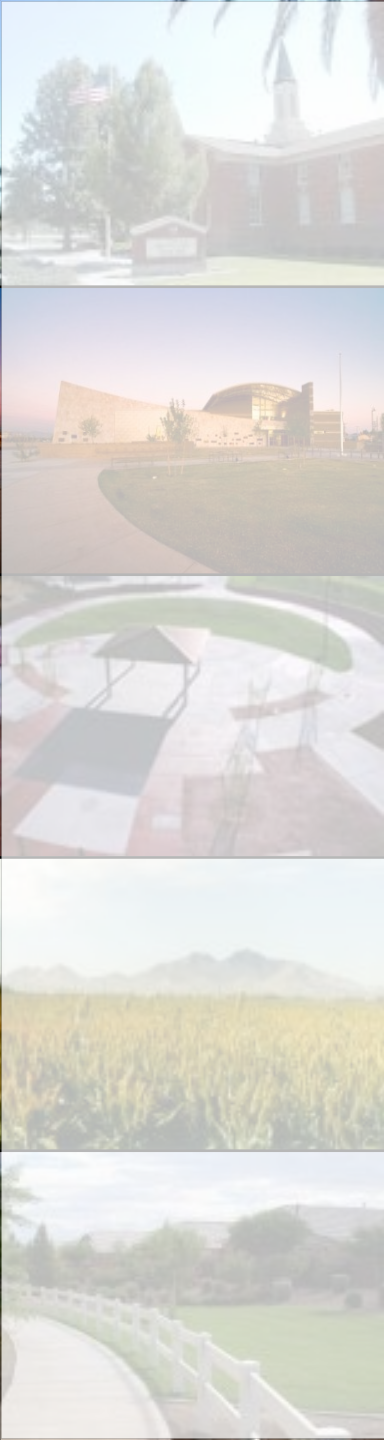
Troy White, Public Works Division Manager

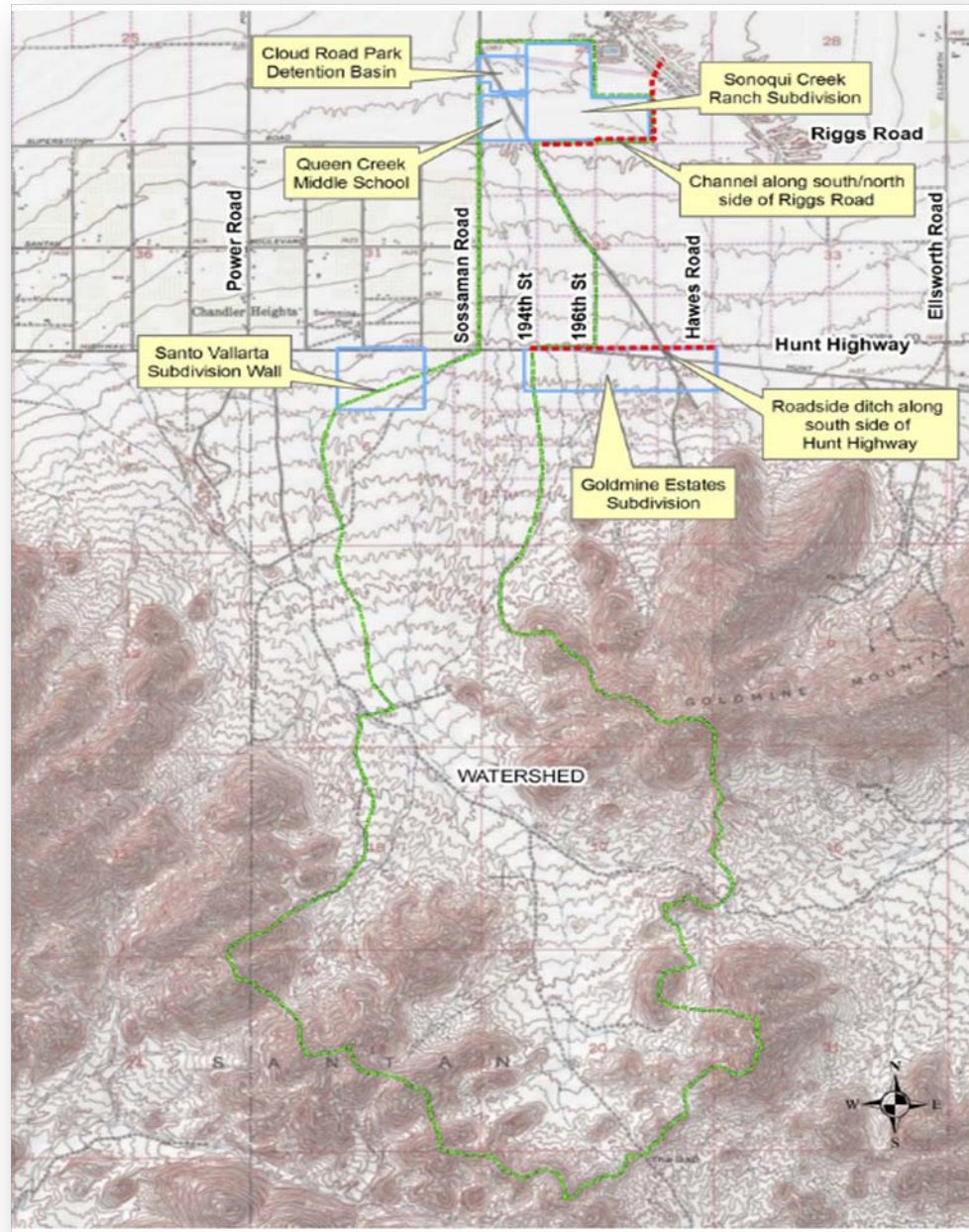
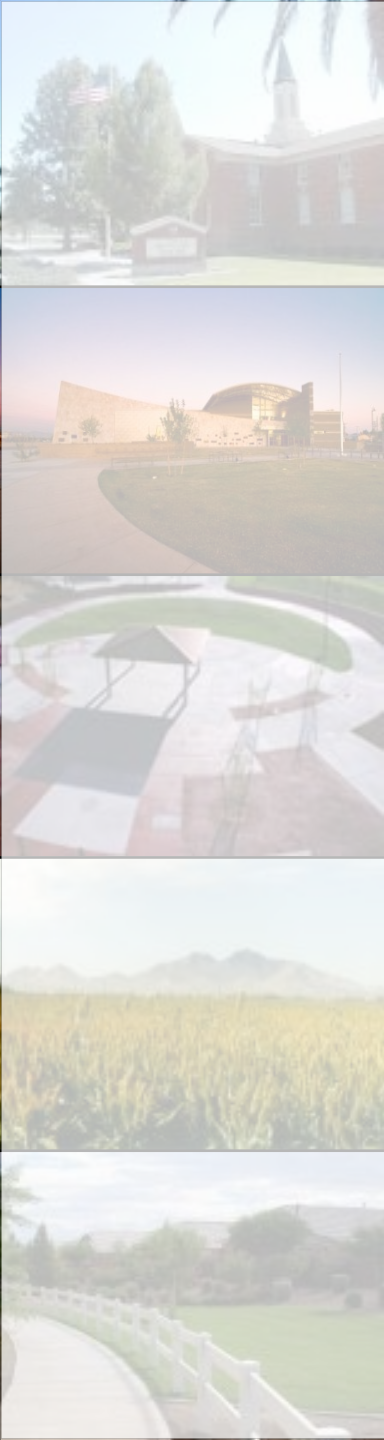
April 6, 2011



# Project Background

- Flooding hazards have historically threatened the area immediately north of Cloud Road, west of Sossaman Road, and overtopping of Sossaman Road is an ongoing concern for properties located south of Cloud near Sossaman.
- During larger rain events there is a significant amount of storm water flow from the watershed south of Riggs Road along the Sossaman Road corridor in Maricopa County.
- A hydrologic study completed several years ago indicated insufficient drainage capacity in the area and recommended the implementation of the Cloud Road Basin and Sossaman Road Outlet project.
- The Cloud Road Basin and Sossaman Road Outlet project will add additional drainage capacity in this area to channel those flows to the Sonoqui Wash north of Chandler Heights Road.





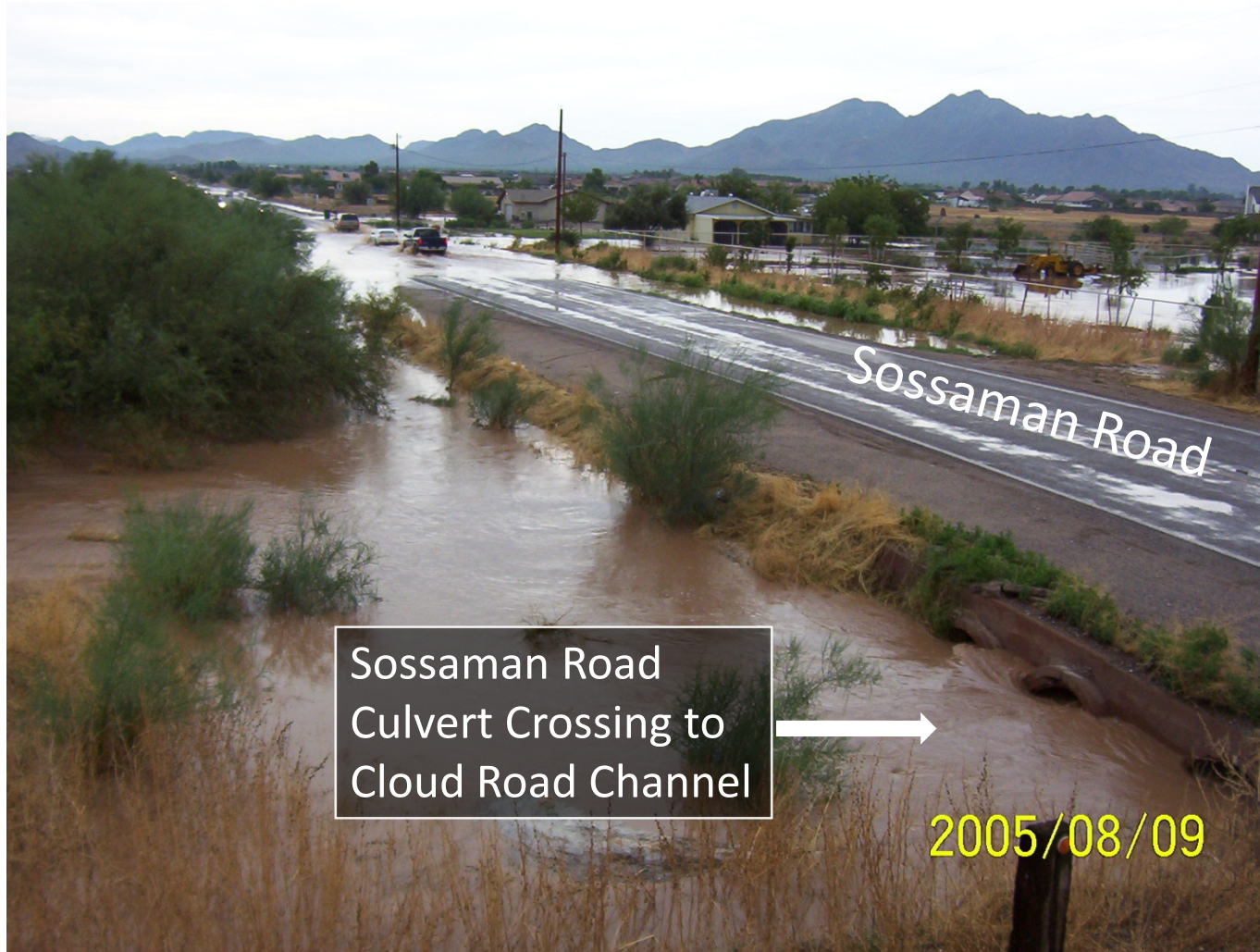
Contributing Watershed Area

# Sossaman Road looking south from Cloud Road



Flows crossing road from east to west

# Sossaman Road looking south from Cloud Road



Sossaman Road  
Culvert Crossing to  
Cloud Road Channel

2005/08/09

# Looking southeast from Cloud Road at Sossaman Road



# Cloud Road Channel looking east towards Sossaman Road



2005/08/09

# Cloud Road Channel looking west of Sossaman Road







# Project History

- IGA for Design between Town of Queen Creek and MCFCFD approved by Council – *April 15, 2009*
- Design Contract to Dibble Engineering approved by Council - *September 16, 2009*
- Public Open House – 60% Design Plans - *April 27, 2010*
- IGA for Construction between Town of Queen Creek and MCFCFD approved by Council – *May 5, 2010*
- 100% Design Plans Completed – *January 2011*
- Public Open House – for construction - *February 8, 2011*
- Construction Contract to Markham Contracting Co. presented to Council for possible approval – *April 6, 2011*
- *Project schedule- May through August/early September*



# IGA – For Construction

## IGA Terms

### Town

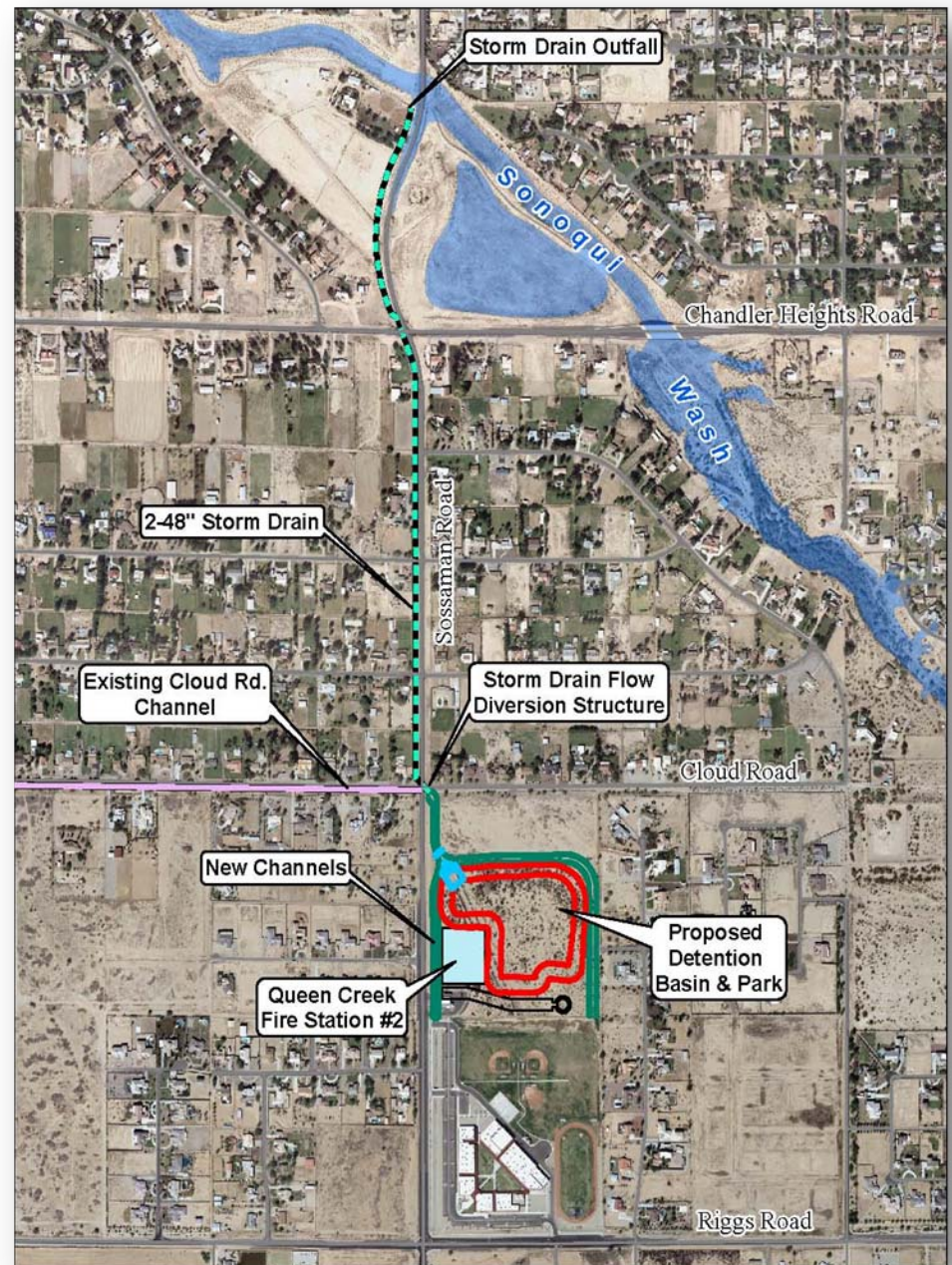
- Town pays for ROW (completed)
- Town Staff leads construction management
- Town responsible for annual maintenance cost (\$1,500-\$2,000)

### Flood Control District

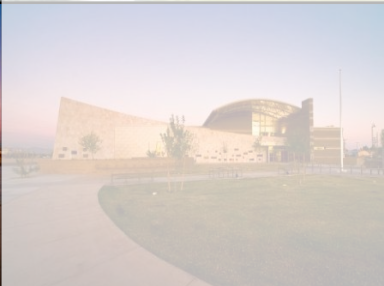
- Flood Control District pays for Construction - 3.6 Mil.
- Flood Control District pays Construction Management cost of 8%

# Project Scope

- 51 ac-ft Detention Basin at future park site approximately 750' x 750' with approx. 4 ft. depth of water during 100-year flood event. *(1 ac-ft is equivalent to 1 ft depth of water spread over an area of 1 acre)*
- Drainage Channel improvements along east side of Sossaman Road between the Newell Barney Junior High School and Cloud Road
- Twin 48" underground storm drain pipes along west edge of Sossaman Road. Outfall to Sonoqui Wash. *(underground pipes are within existing Sossaman Road ROW)*



Project Site Map



# Questions/Comments