



TOWN OF
QUEEN CREEK
ARIZONA

FEMA – Maricopa County Flood Insurance Rate Map Revisions

Chris Dovel - Principal Engineer, Floodplain Administrator

March 2, 2011



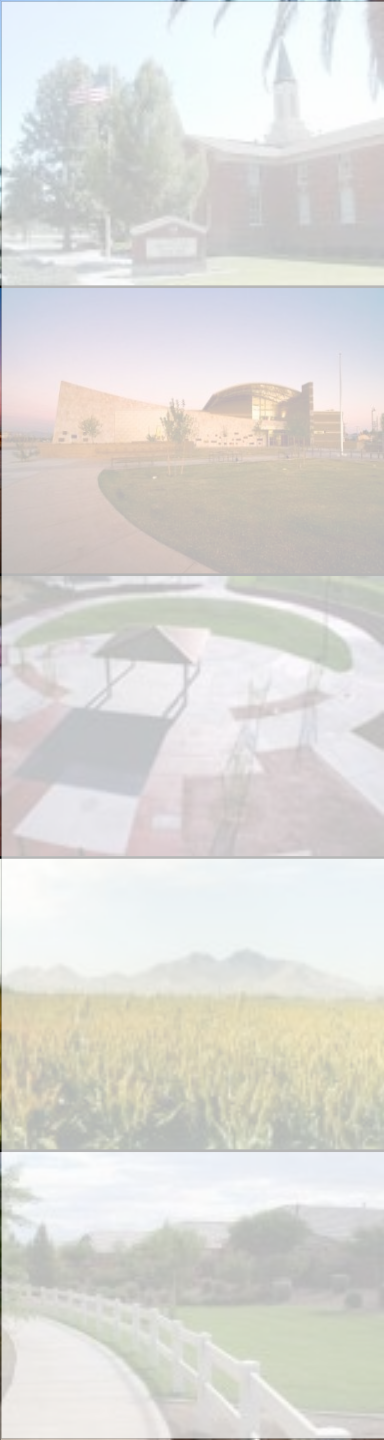


Background for Queen Creek National Flood Insurance Program

- National Flood Insurance Program (NFIP)
 - Created in 1968 by Congress
 - Administered by Federal Emergency Management Agency (FEMA)
- NFIP Key components:
 - **Mapping**– Insurance – Regulation
 - Flood Insurance Rate Maps (FIRMs) identify flood prone areas
 - To provide federally backed flood insurance
 - To enforce Floodplain Management and Ordinances

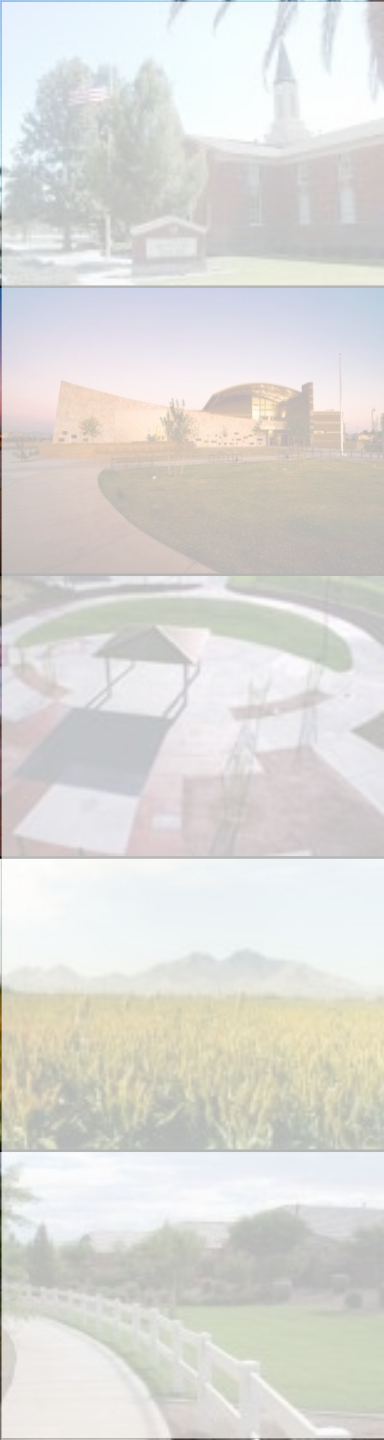
National Flood Insurance Program (NFIP)

- Communities Participate in the NFIP (at no cost)
- Queen Creek joined the NFIP on July 22, 1992
- In Arizona - 103 Communities participate in the NFIP
- Nationally – over 20,000 NFIP Communities



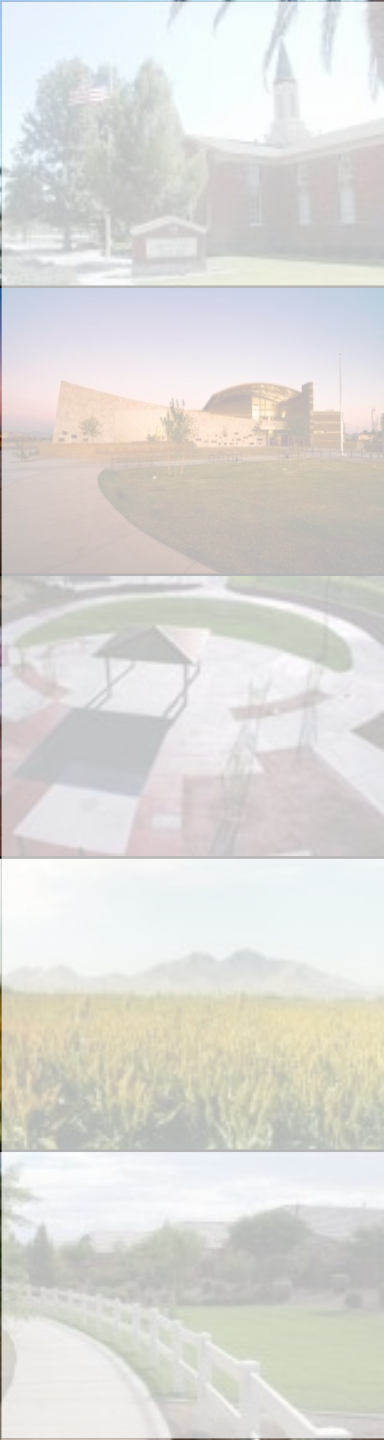
Floodplain Management for NFIP Communities

- Adopt and enforce a Floodplain Management Ordinance
 - Town has Floodplain Management Ordinances for both Maricopa and Pinal County.
 - Maricopa County and Pinal County have adopted Floodplain Regulations that meet the requirements of the NFIP
- Town Agrees to Regulate and enforce development in floodplains mapped on the FIRMs
 - Flood Control District review and approval
 - Floodplain use permits (by County)



Flood Insurance Rate Maps (FIRMs)

- FIRMs Delineate Special Flood Hazard Areas (SFHA)
 - SFHA – Areas subject to inundation by the 1% annual chance flood (base flood or 100-year flood)
 - Identify Flood Risk Zones
 - High Risk – areas falling in the SFHA
 - Medium to Low Risk



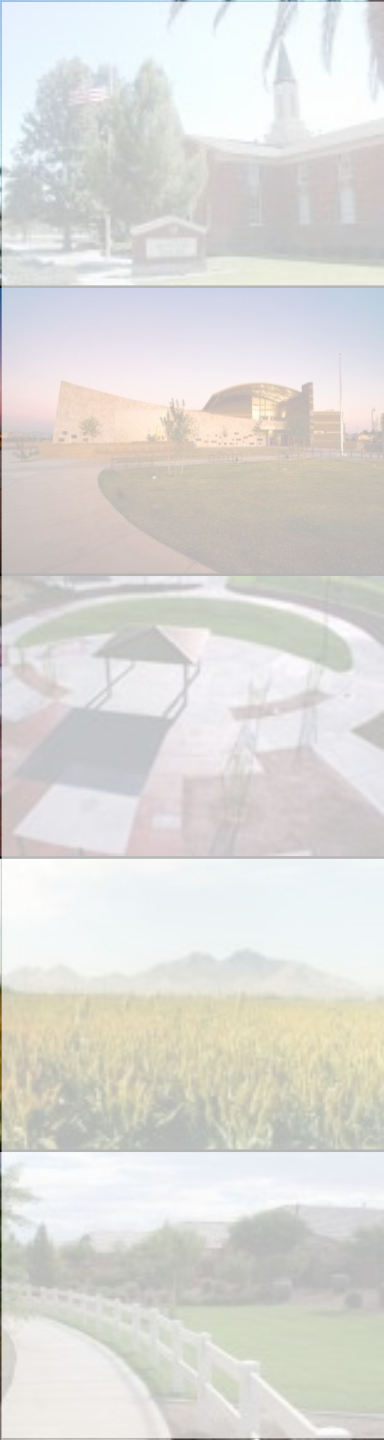


FEMA “Map Mod” Program

- FEMA Map Modernization Program
 - Multi year congressionally supported presidential initiative to update the nations FIRM maps
 - 5 Year Program, 2004 – 2009
 - Conversions completed on a countywide basis
 - Maricopa County maps completed and became effective September 30, 2005
 - Pinal County maps completed and became effective December 4, 2007

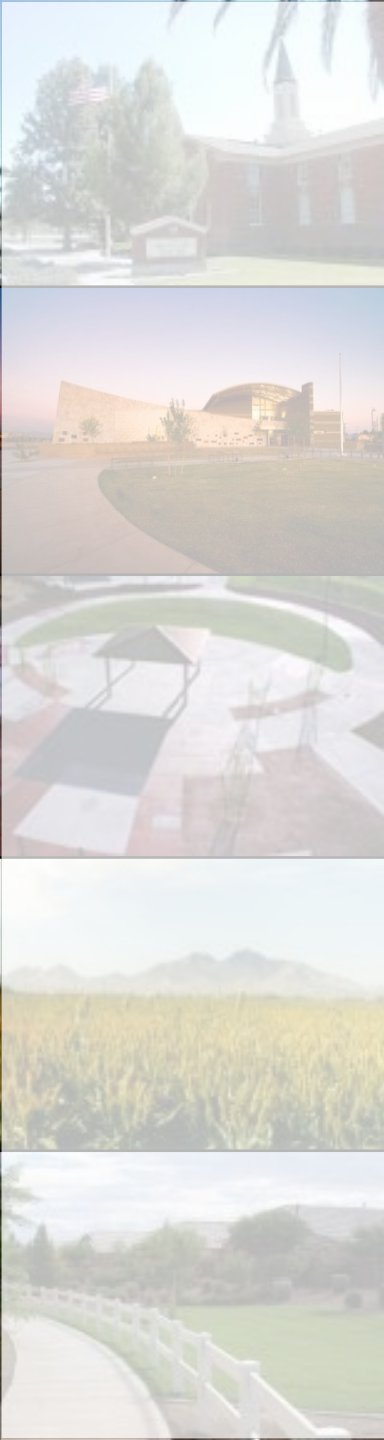
FEMA – “PM 34” EMBANKMENTS

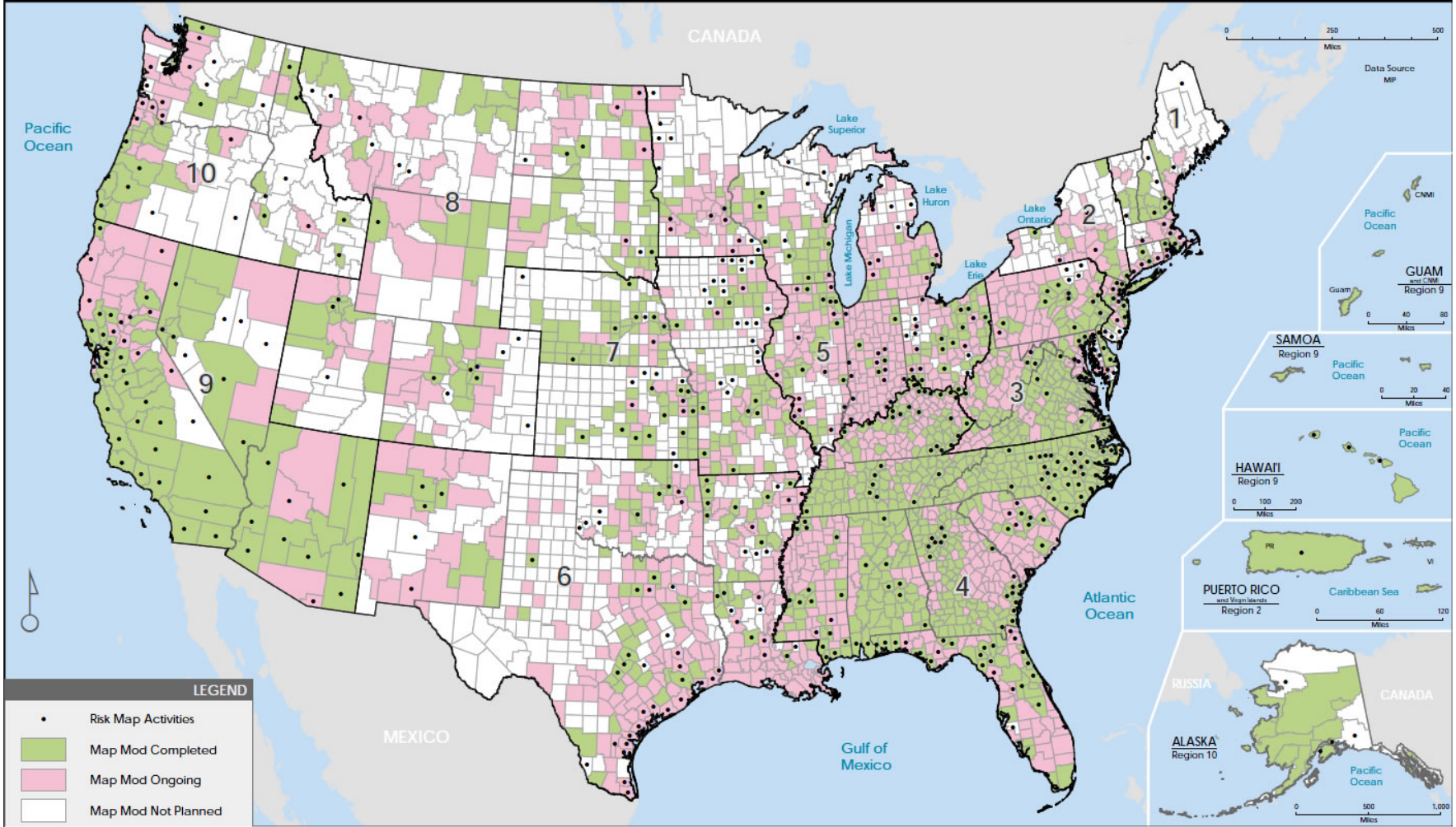
- FEMA Procedure Memorandum 34 (August 2005)
 - Levees must be “certified” per Title 44 Code of Federal Regulations (CFR) Section 65.10
 - Highway, canal, & railroad embankments do not meet the requirements of (44 CFR 65.10) and considered “non-levee embankments”
 - Areas behind “non-levee embankments” mapped as Special Flood Hazard Areas



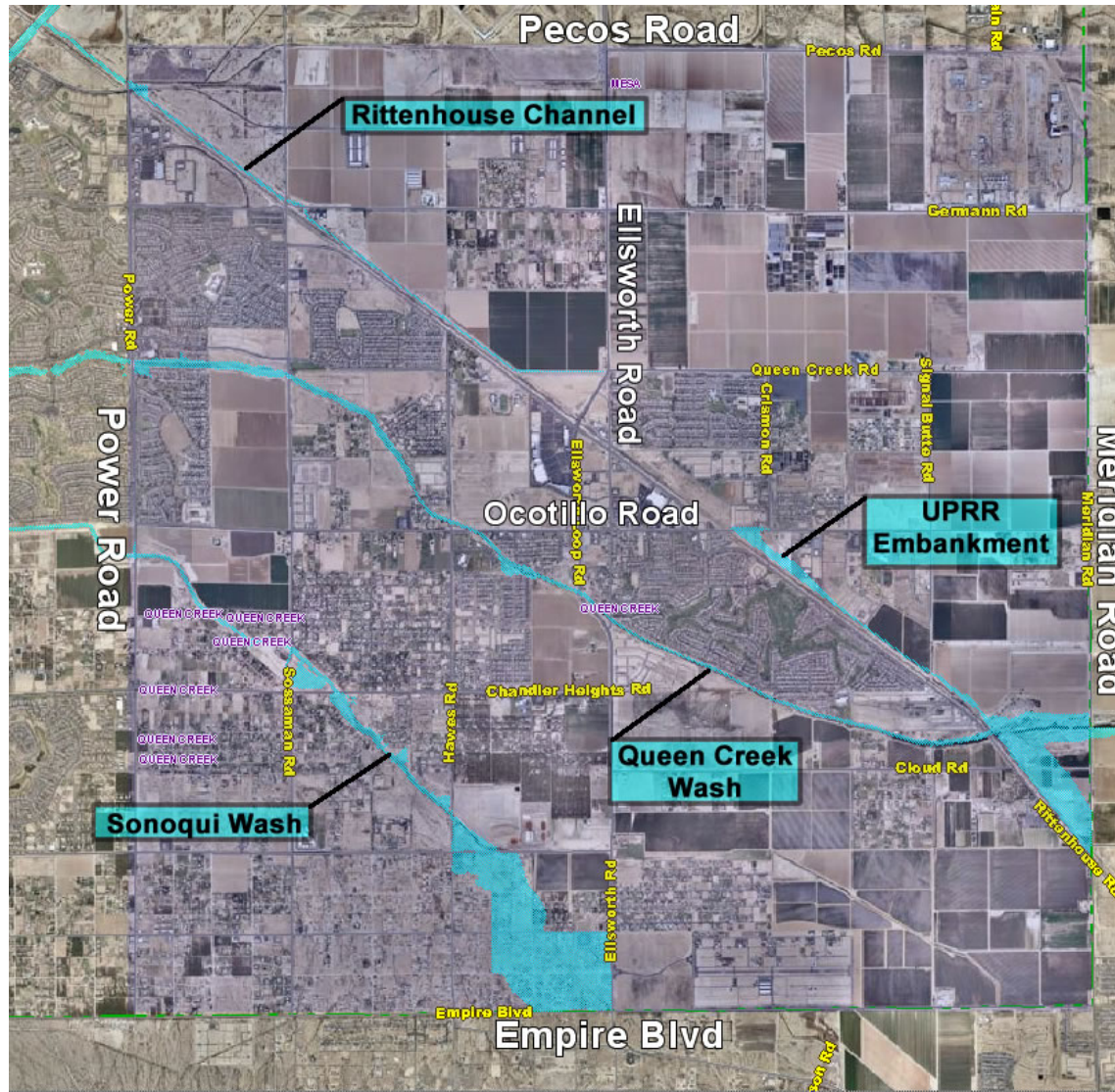
FEMA “Risk Map” Program

- FEMA Risk Map Program
 - March 16th, 2009 – Congress approved the FEMA “Risk Map Multi-Year Plan” for Fiscal Years 2010-2014
 - FEMA revising Maricopa County FIRMs through this program and partly through “Map Mod”





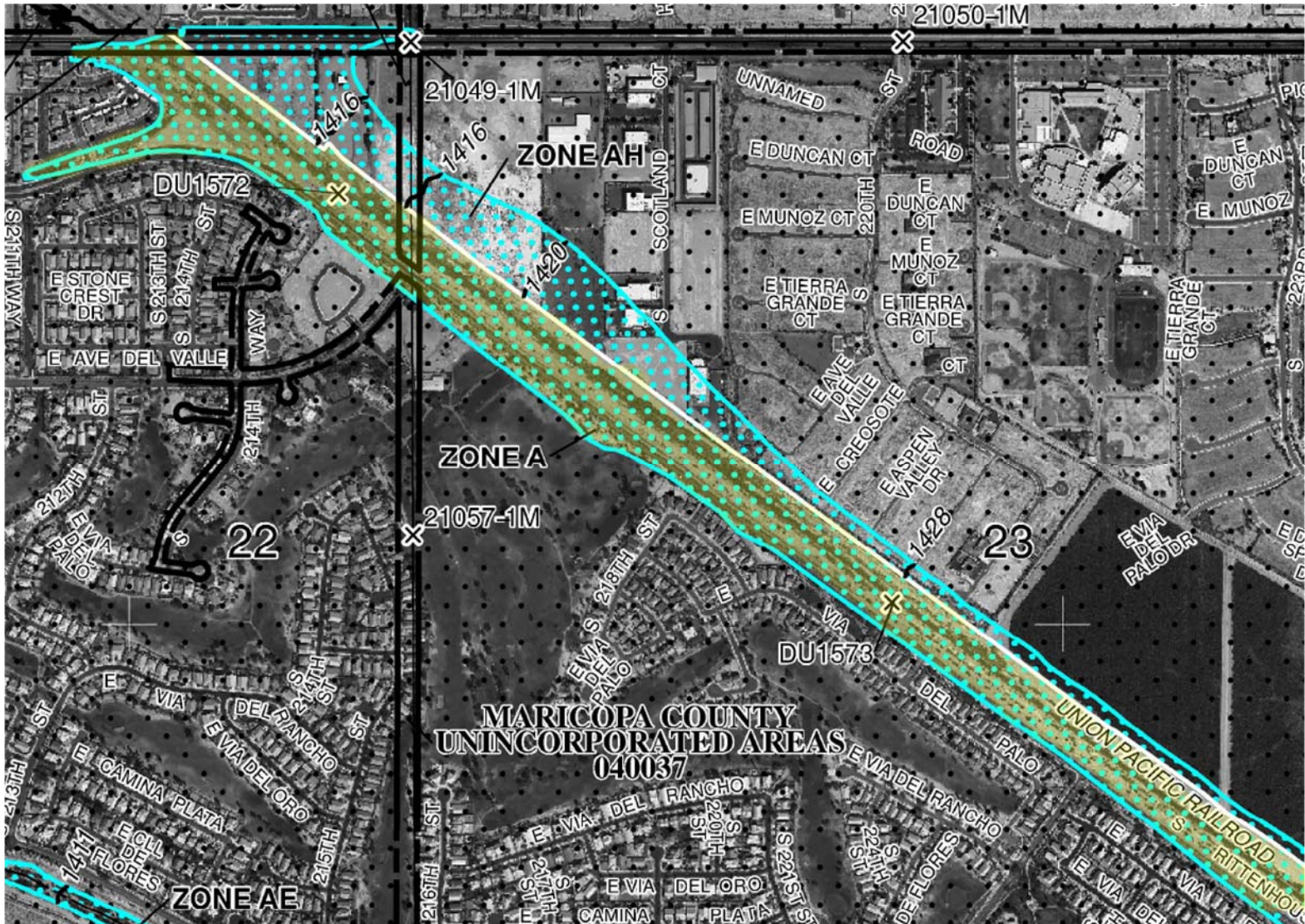
Queen Creek Flood Hazard Areas (Maricopa County)



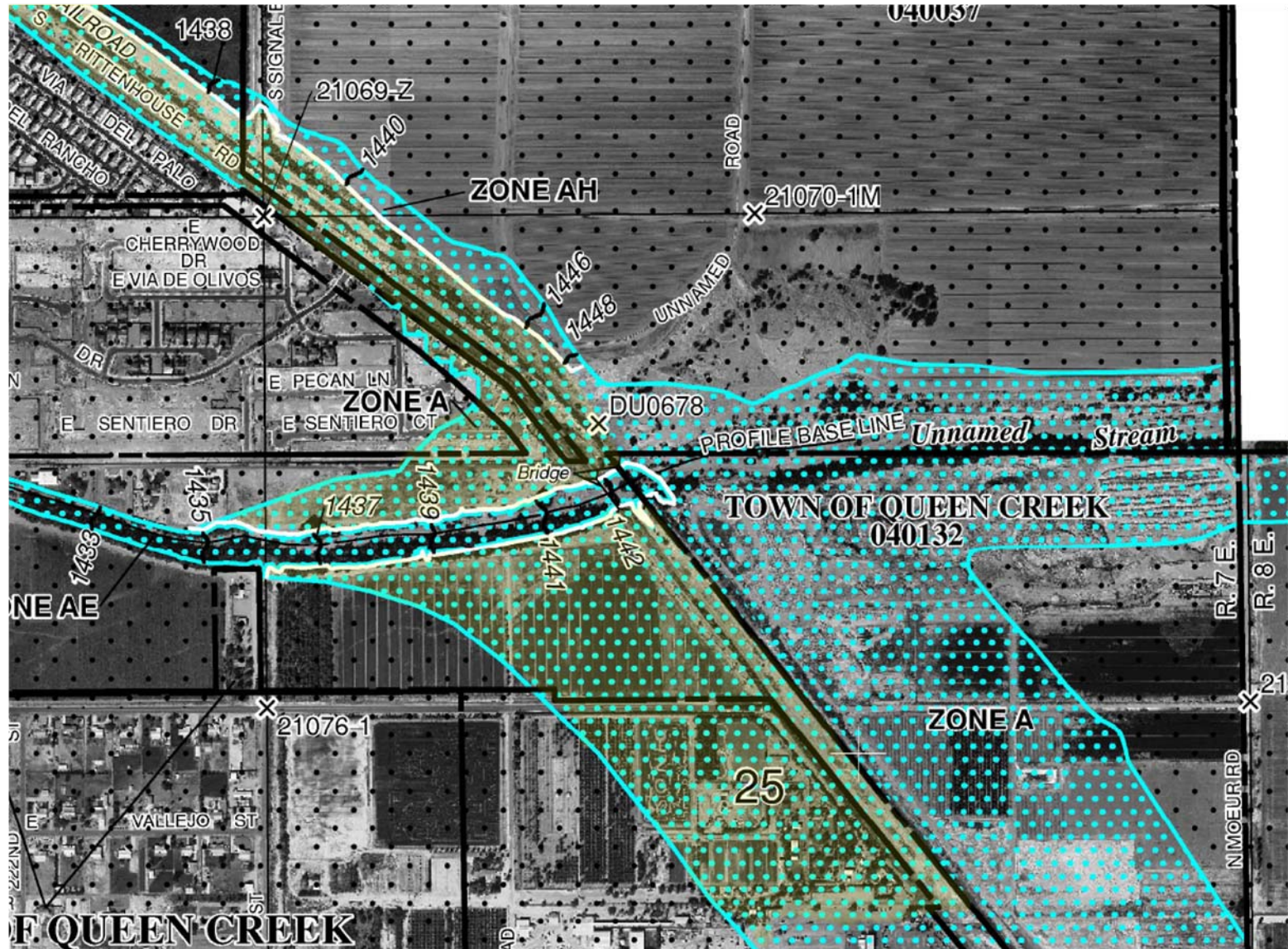
Sossaman Estates Jacaranda Blvd.



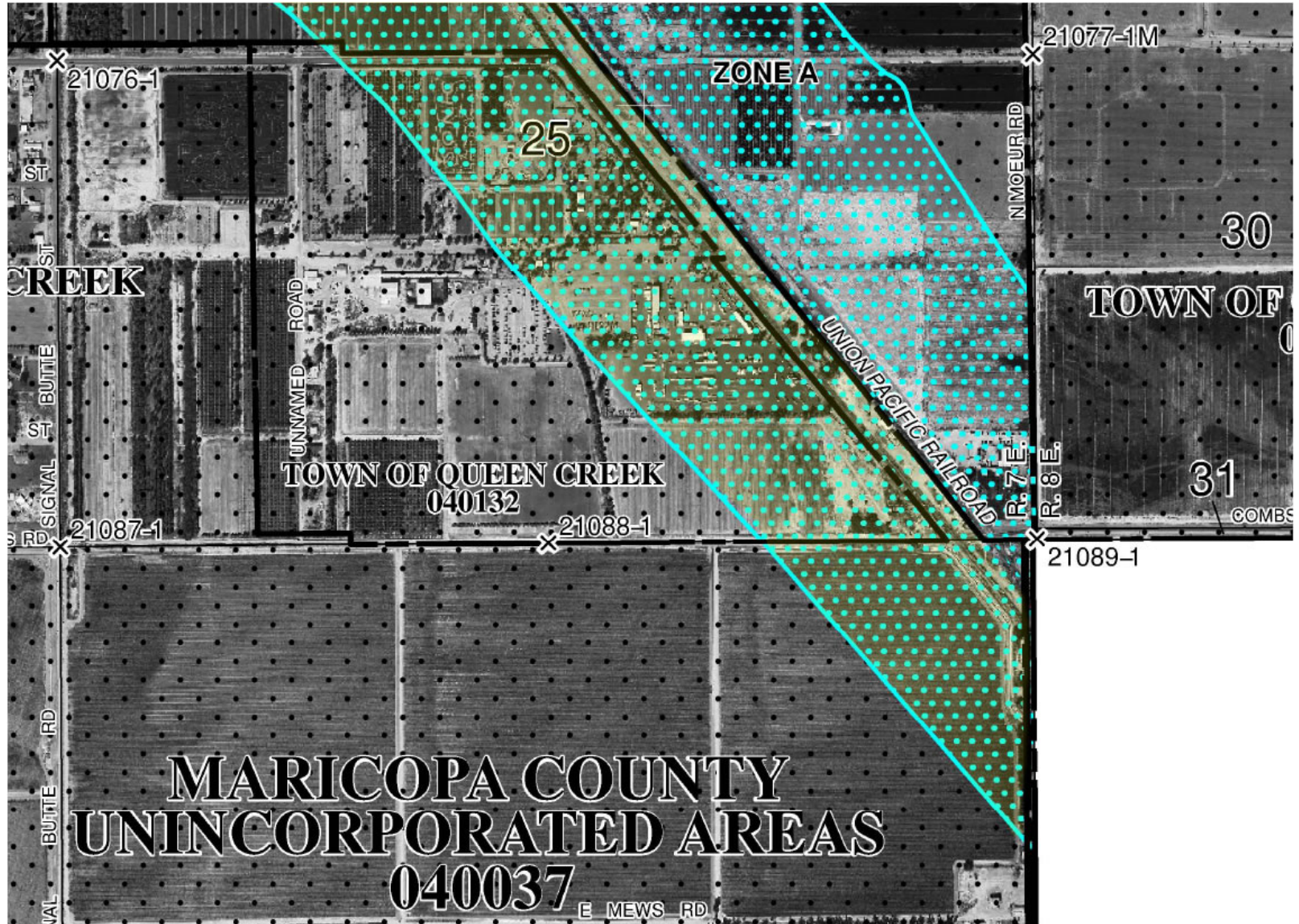
UPRR Embankment – Rittenhouse Road



UPRR Embankment - Rittenhouse Road



UPRR Embankment - Rittenhouse Road



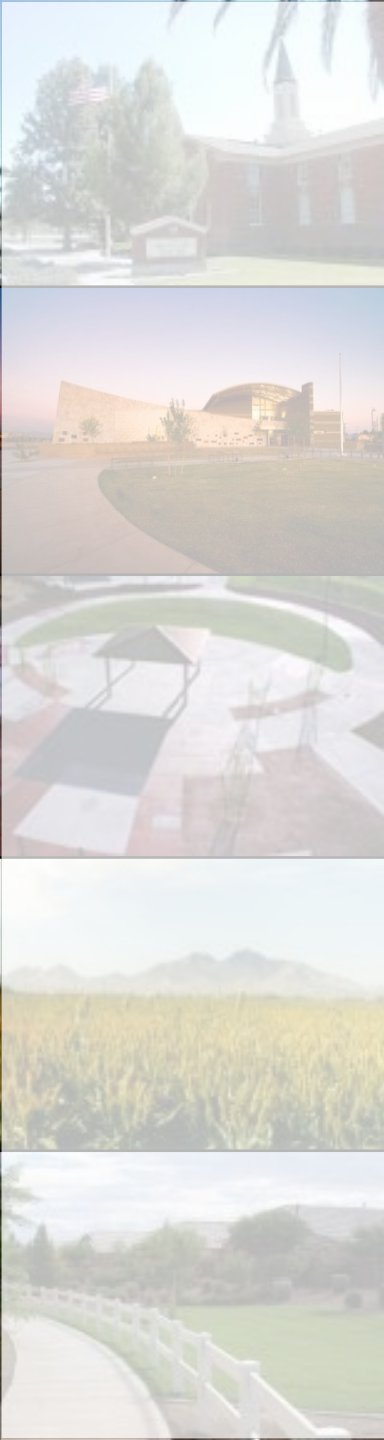


MAP REVISION SCHEDULE

- Where are we at in the Map Revision process?
- Items Completed
 - December 2010 - FEMA Distributed Preliminary Maps to Communities
 - January 2011 - 30 Day Community Review Period
- Remaining Project Schedule (**Tentative**)
 - April 1, 2011 - Federal Register BFE Publication
 - **May 6, 2011 - 90 Day appeal Period Begins for Public & Community Input** – 2nd Newspaper Publication
 - August 3, 2011 - Appeal Period Ends
 - August 31, 2011 - Appeal Resolution Completed
 - October 3, 2011 - Anticipated Quality Reviews Submittal
 - December 3, 2011 – Potential Letter of Final Determination (LFD)
 - June 6, 2012 – Maps Become Effective

PUBLIC INPUT

- FEMA prefers local municipalities to be the conduit between FEMA and private property owners
- Town to contact private property owners affected by revised map prior to beginning of 90 day appeal period
- Town Staff will notify private property owners of possible open houses conducted by FEMA





Questions/Comments