



TOWN OF
QUEEN CREEK
ARIZONA

Medical Marijuana

Town Council Meeting
December 1, 2010

Wayne Balmer, AICP
Planning Manger





Proposition 203

- Approved on November 2 election
- Allows use of marijuana for specific health related issues
- Qualifying patients would be issued a registration card
- Obtain 2.5 ounces of medical marijuana every 2 weeks
- Medical marijuana dispensaries would be established locally to provide the marijuana



Proposition 203

- Approximately 124 medical marijuana dispensaries would be established in Arizona
- One dispensary for every 10 pharmacies in Arizona
- Allows dispensaries, infusion facilities and offsite cultivation locations
- Arizona Department of Health Services will establish regulations for the dispensaries by April 2011



Proposition 203

- Resolution requires dispensaries be at least 500 feet from a public or private school, but has no other requirements
- Local communities can establish “reasonable” zoning regulations for the location of dispensaries and offsite cultivation locations
- Companies are already looking for locations



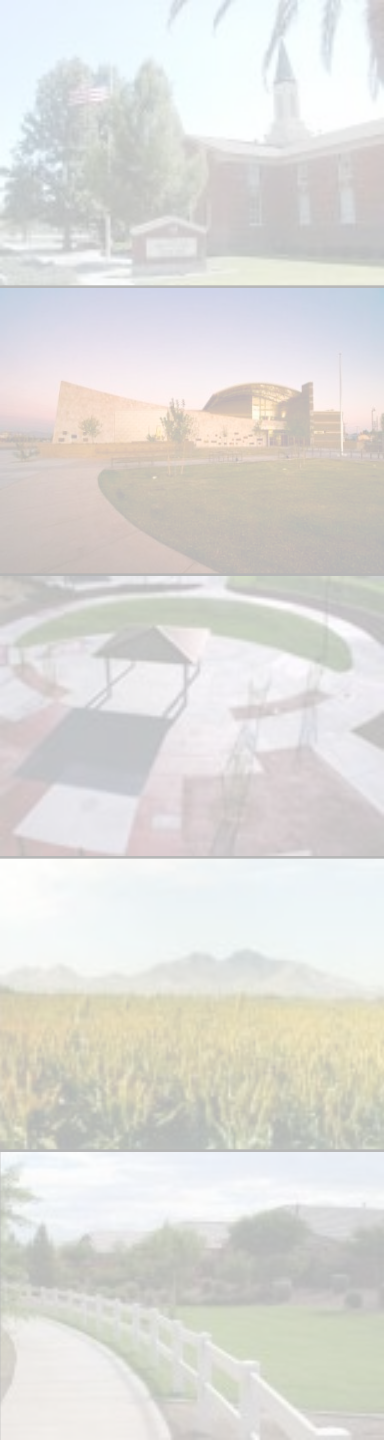
Local Action

- League of Arizona Cities and Towns is coordinating local discussions and has produced a model ordinance for use by local communities
- Marana, Tucson, Flagstaff and others are already proposing ordinance changes
- Phoenix, Mesa, Pinal County, Maricopa County and Gilbert are in the discussion stage, with proposals in process



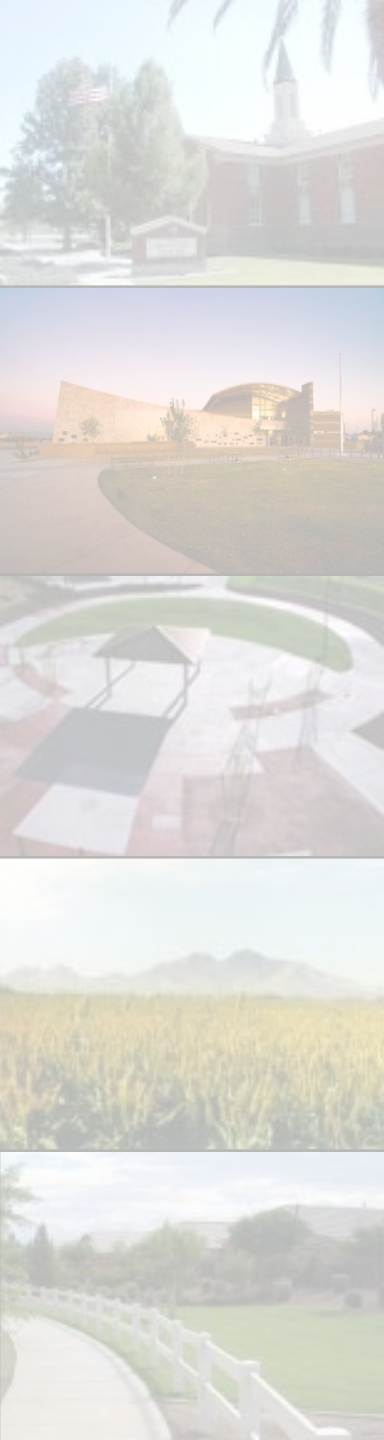
Conditional Use Permits

- Zoning ordinance be modified as follows:
 - Definitions for medical marijuana dispensaries, infusion facilities, offsite cultivation locations and added
 - Dispensaries, infusion facilities and offsite cultivation locations require approval of a Conditional Use Permit
 - Dispensaries and infusion facilities in the C-2 (not TC), I-1 and I-2 districts
 - Offsite cultivation locations in the I-1 and I-2 districts



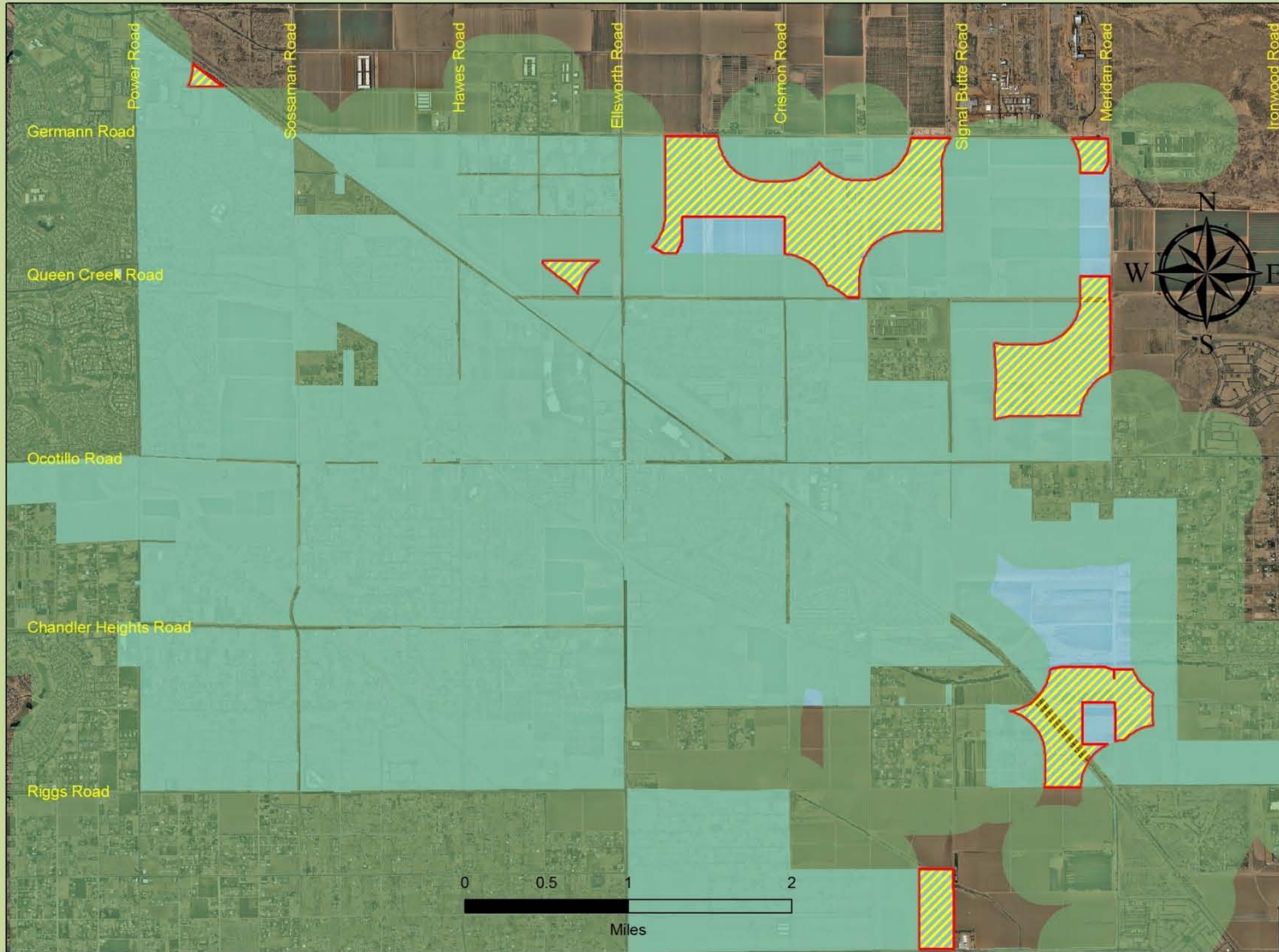
Distance Requirements

- A distance separation of at least 1,500' from any of the following uses would be required:
 - Next nearest dispensary, infusion facility or offsite cultivation location
 - Public, private or charter school
 - Public or private day care center
 - Public or private recreation center
 - Public park or library
 - Church/place of worship



Distance Requirements

- A distance separation of at least 1,500' from any of the following uses would be required:
 - Massage establishment
 - Teen club
 - Group care home
 - Sexually oriented business
 - Pharmacy
 - Residential zoning district
 - Substance abuse treatment facility



Legend

- 1500' Buffer
- Possible Areas for Marijuana Business
- Queen Creek Town Limits

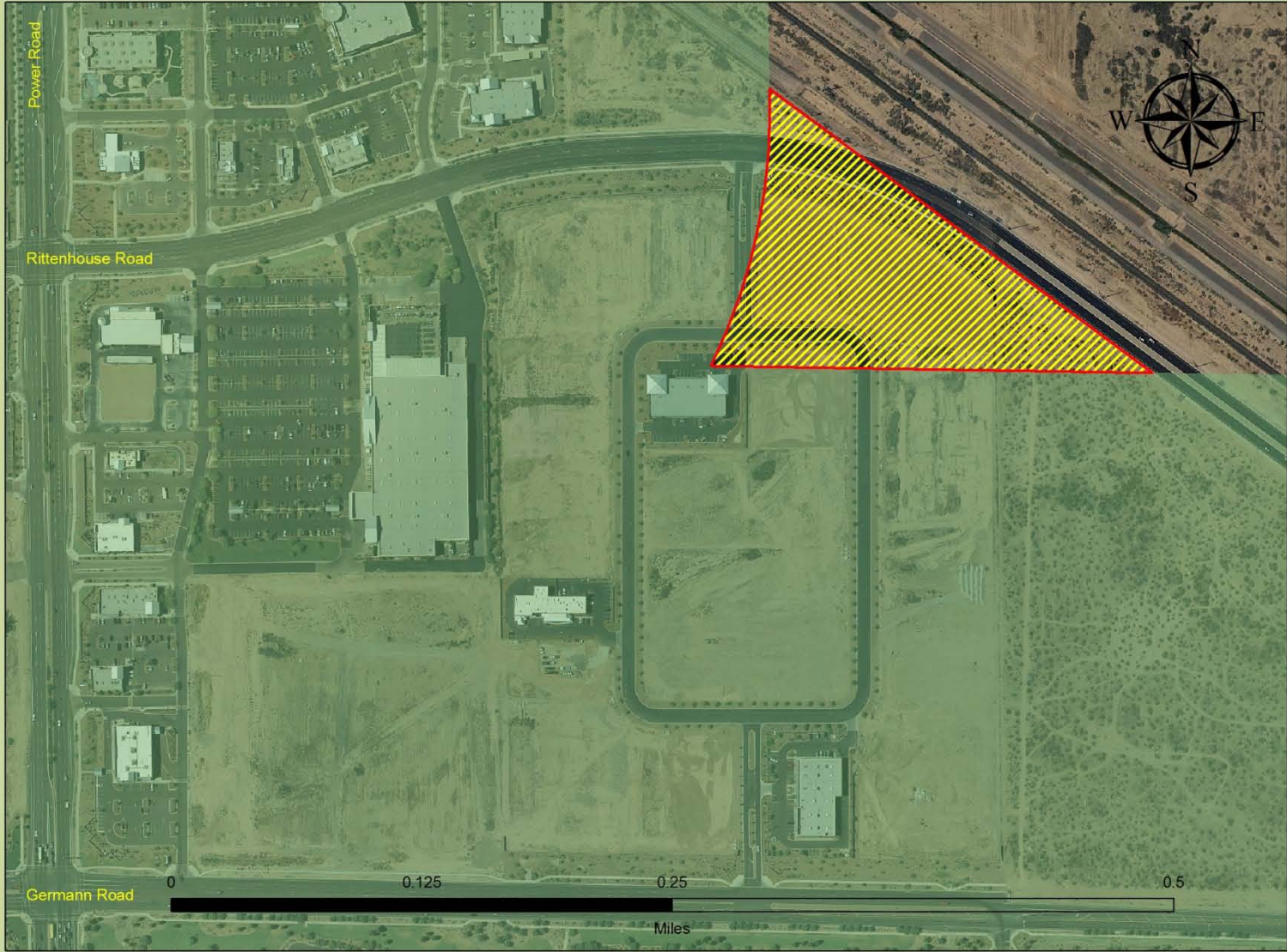
Proposed Medical Marijuana 1500' Buffer

Buffer is based on distance from:

- Homes
- Schools
- Parks
- Churches

All information is believed to be accurate on the date of publication, but is not guaranteed.

Publish Date: 11/15/2010



Legend

- Possible Area for Marijuana Business
- 1500' Buffer

Proposed Medical Marijuana 1500' Buffer

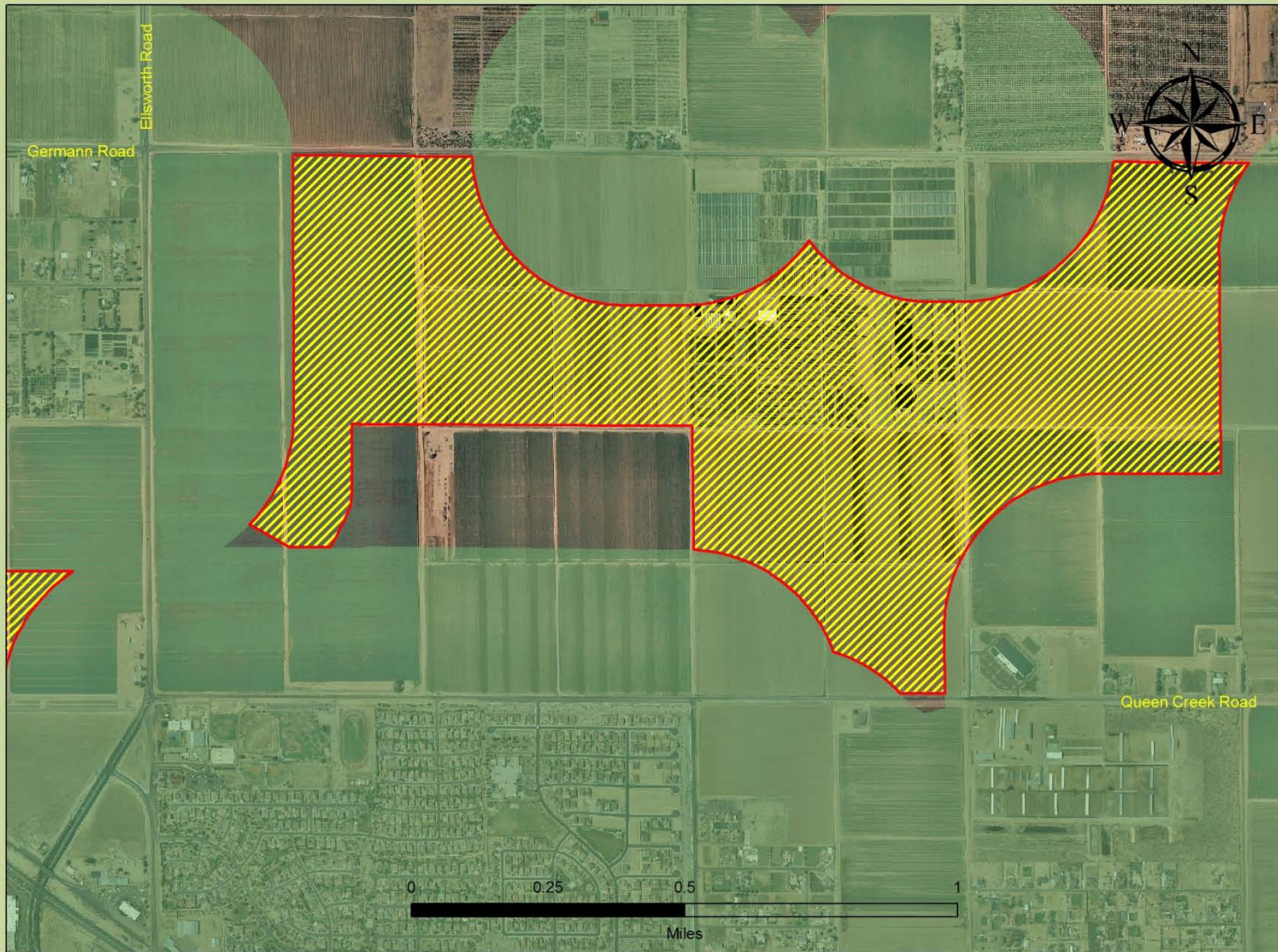
Power Market Place Area

Buffer is based on distance from:

- Homes
- Schools
- Parks
- Churches

All information is believed to be accurate on the date of publication, but is not guaranteed.

Publish Date: 11/15/2010



Legend

- Possible Area for Marijuana Business
- 1500' Buffer

Proposed Medical Marijuana 1500' Buffer

Germann and Queen Creek Area



Buffer is based on distance from:

- Homes
- Schools
- Parks
- Churches

All information is
believed to be
accurate on the
date of publication,
but is not guaranteed.

Publish Date: 11/15/2010



Legend
 Possible Area for Marijuana Business
 1500' Buffer

Proposed Medical Marijuana 1500' Buffer

Rittenhouse and Combs Area

Buffer is based on distance from:

- Homes
- Schools
- Parks
- Churches

All information is believed to be accurate on the date of publication, but is not guaranteed.

Publish Date: 11/15/2010



Security Plan and Hours

- Security plan to include:
 - Exterior lighting
 - Security alarm system
 - Building safety measures
 - Interior floor plan
 - Exterior site and parking plan
 - A secure storage area
- Hours of operation
 - 9:00 a.m. to 5:00 p.m.



Additional Requirements

- Dispensaries and offsite locations shall:
 - Not be located in a permanent building, not in a cargo container, trailer or motor vehicle
 - Not have drive-through service
 - Not emit dust, fumes, vapors, odors
 - Not provide off-site delivery
 - Prohibit on-site consumption
 - Not have outdoor seating
 - Obtain a business license
 - Not be larger than 2,500 s.f. for a dispensary or 3,000 s.f. for a dispensary with a cultivation location
 - Be limited to one per ten pharmacies in Town



Additional requirements

- Provide documentation the owners can meet ADHS standards for approval
- Prohibited activities
 - No offsite cultivation locations without an associated dispensary
 - No more than one offsite cultivation location per dispensary



Next Steps

- Coordinate with the League to work with ADHS to develop regulations for dispensary and cultivation locations
- Possible modifications to our ordinance may be needed to incorporate the ADHS regulations published in April
- Develop an application forms to be used for processing dispensary and offsite cultivation location requests



TOWN OF QUEEN CREEK ARIZONA

Thank you

Questions?

Comments?

