



## Town of Queen Creek

# Capital Improvement Projects Update

Dave Lipinski PE, CIP Dept. Dir.

Town Council 12.6.23

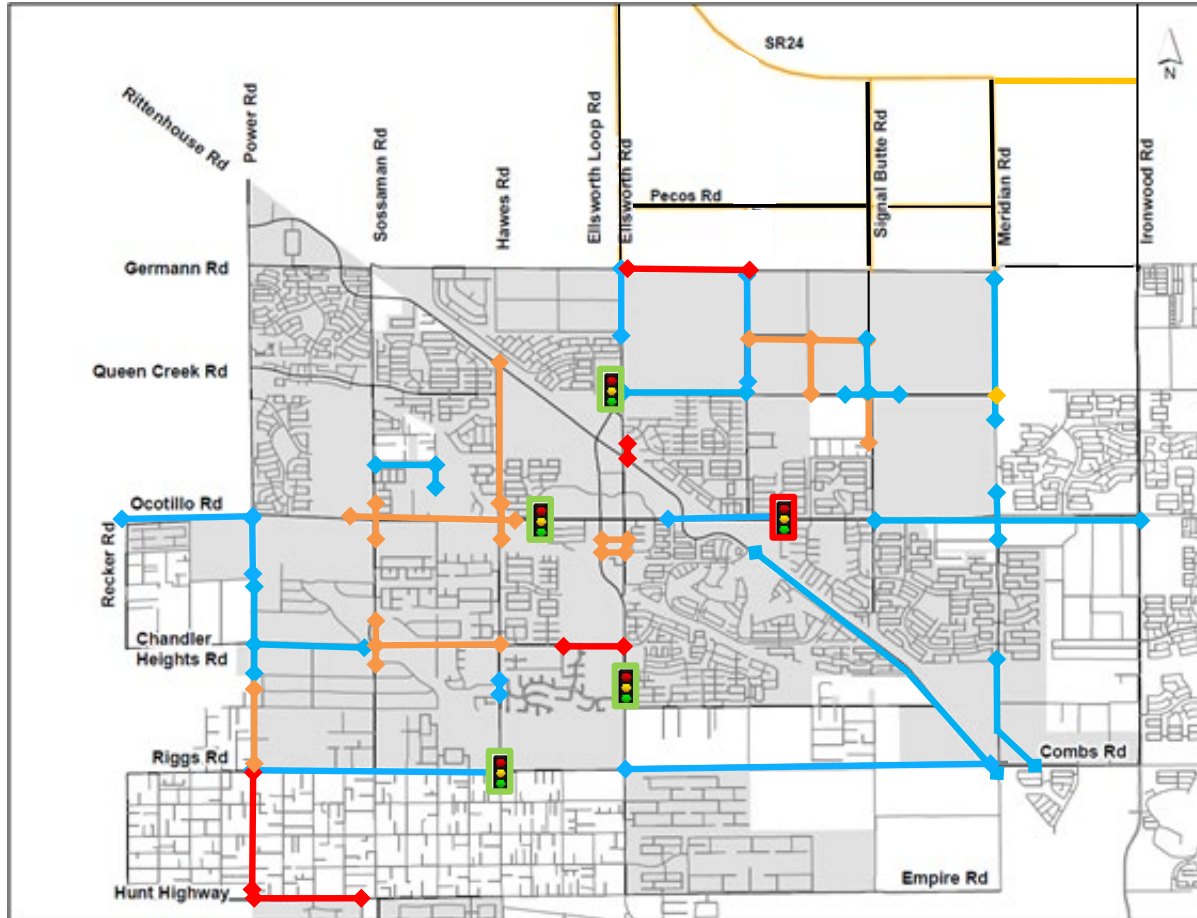
# 10-Year IIP Roadway Projects 2018-2027

**Key**

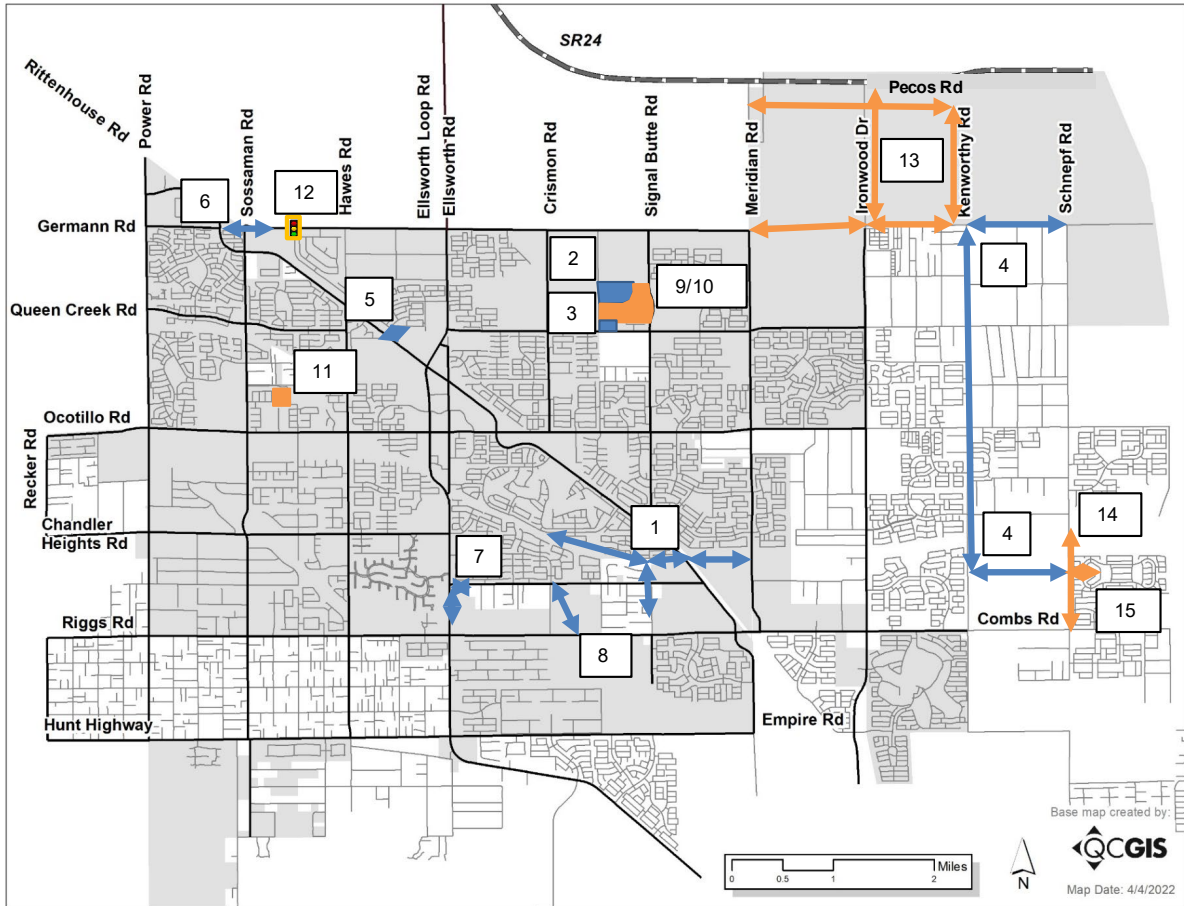
- ◆ = Completed Project
- ◆ = Active Project
- ◆ = Remaining Project

-  Traffic Signal Completed
-  Traffic Signal Future

Completed	58%
Active	25%
Remaining	17%



# CIP Projects – Non-IIP



## In Design

1. Queen Creek Wash Ph1 & 2
2. Field Operations Facility
3. Public Safety Resource Center
4. Pinal County IGA – ARPA Funded Projects
5. Rittenhouse / UPRR Sewer Replacement
6. Intersection of Sossaman and Germann
7. Ellsworth & Cloud Roads
8. Crismon Road – Cloud to Riggs

## In Construction

9. Frontier Family Park
10. East Park Aquatic & Multi-Gen Center
11. Mansel Carter Park Phase 2
12. Traffic Signal @ Germann & 196<sup>th</sup>
13. ASD Infrastructure
14. Schnepf Road Waterline
15. Loredo Ranch Drive Waterline

## Completed

- Bell Road Pump Station
- HPEC RV Dump Stations

# Meridian Road at Queen Creek/Pima Road





# Meridian Road at Queen Creek/Pima Roads



ITD Budget	ITD Expended	ITD Encumbered	Available
18,004,705	12,061,445	3,195,069	2,748,192

# Town Center Roadways Aldecoa Drive and Munoz Street





# Town Center Roadways Aldecoa Drive and Munoz Street



ITD Budget	ITD Expended	ITD Encumbered	Available
13,159,109	5,224,874	8,107,861	(1736,626)

# Ocotillo Road: Sossaman to Hawes





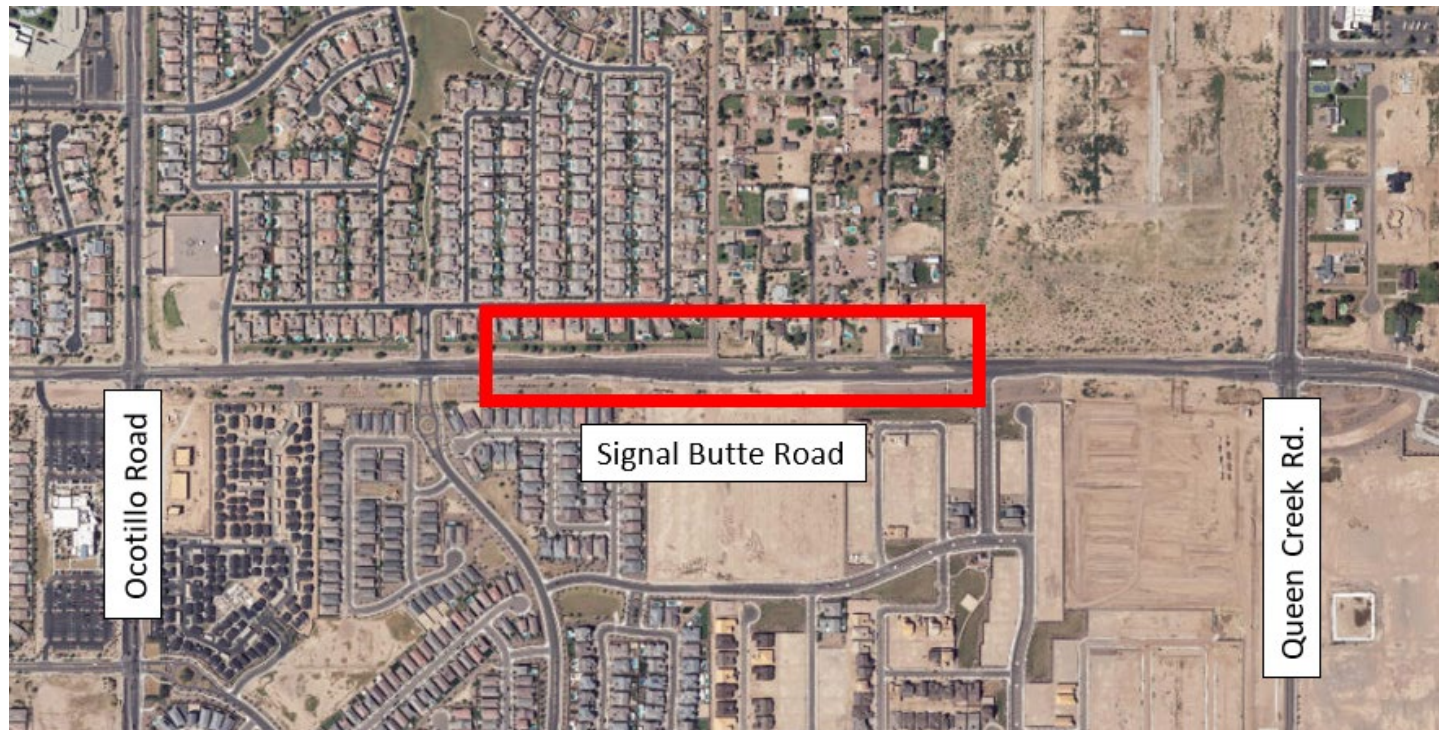
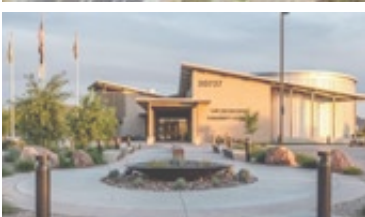
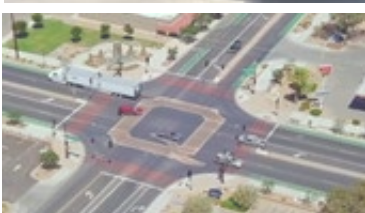
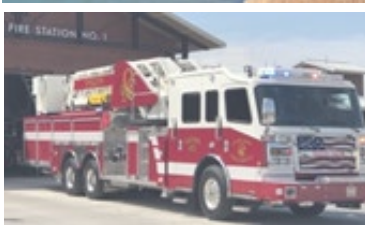
# Ocotillo Road: Sossaman to Hawes



ITD Budget	ITD Expended	ITD Encumbered	Available
21,614,986	5,585,038	15,139,062	2,972,524



# Signal Butte: Ocotillo to Queen Creek





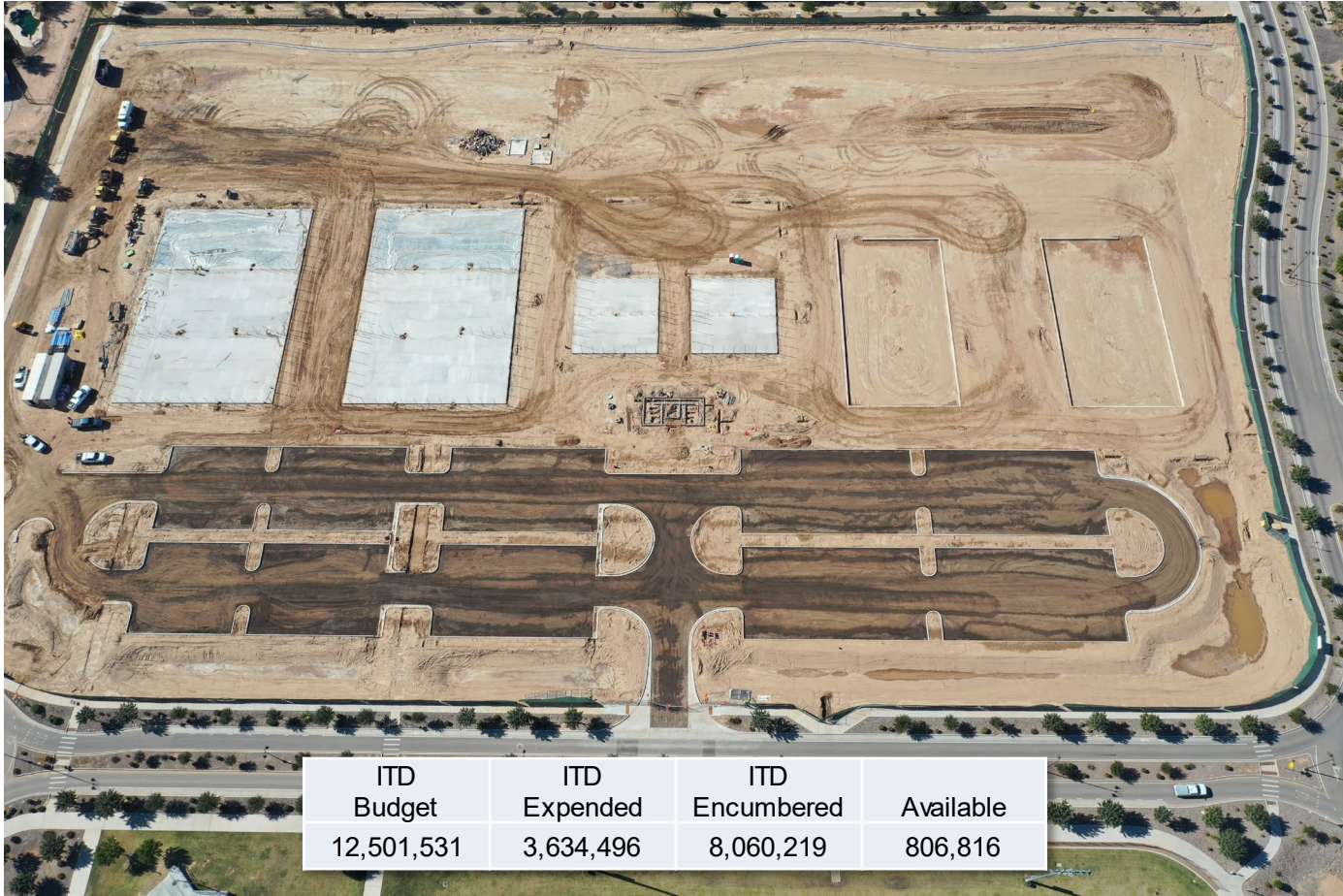
# Signal Butte: Ocotillo to Queen Creek



ITD Budget	ITD Expended	ITD Encumbered	Available
4,425,115	1,181,236	1,856,949	1,387,930



# Mansel Carter Phase 2



# Frontier Family Park



Exterior 

ITD Budget	ITD Expended	ITD Encumbered	Available
78,230,000	41,985,874	32,987,401	3,256,725



# Aquatic & Recreation Center



ITD Budget	ITD Expended	ITD Encumbered	Available
68,000,000	10,224,736	55,222,115	2,442,149



# ASLD Infrastructure

## Phase 1- mainline complete

### Sewer

- 12" – 3,620 LF
- 18" – 11,602 LF
- 32 Manholes
- 4 Bores

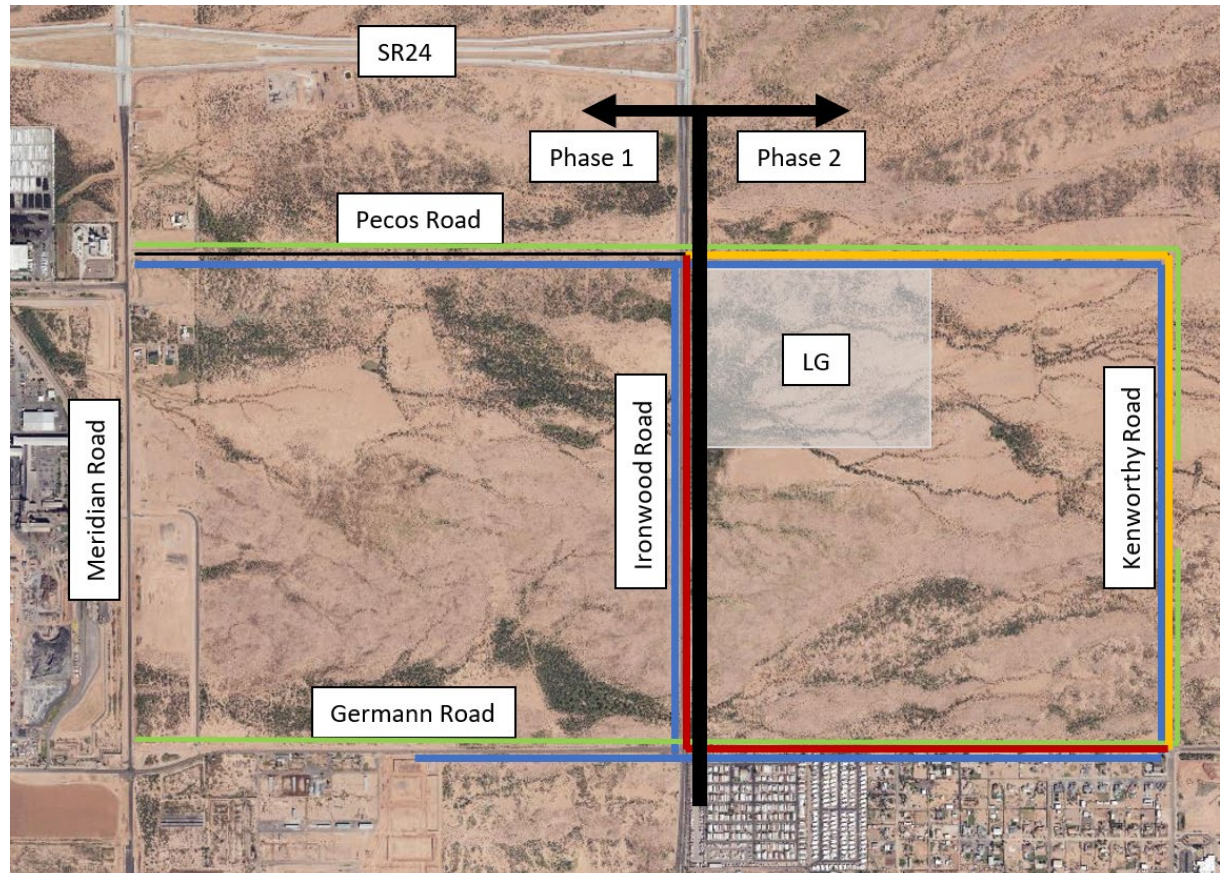
### Water





- 12" – 408 LF
- 16" – 6,211 LF
- 24" – 8,255 LF
- 8 Bores

## Phase 2

### Sewer

- 18" - 919 LF

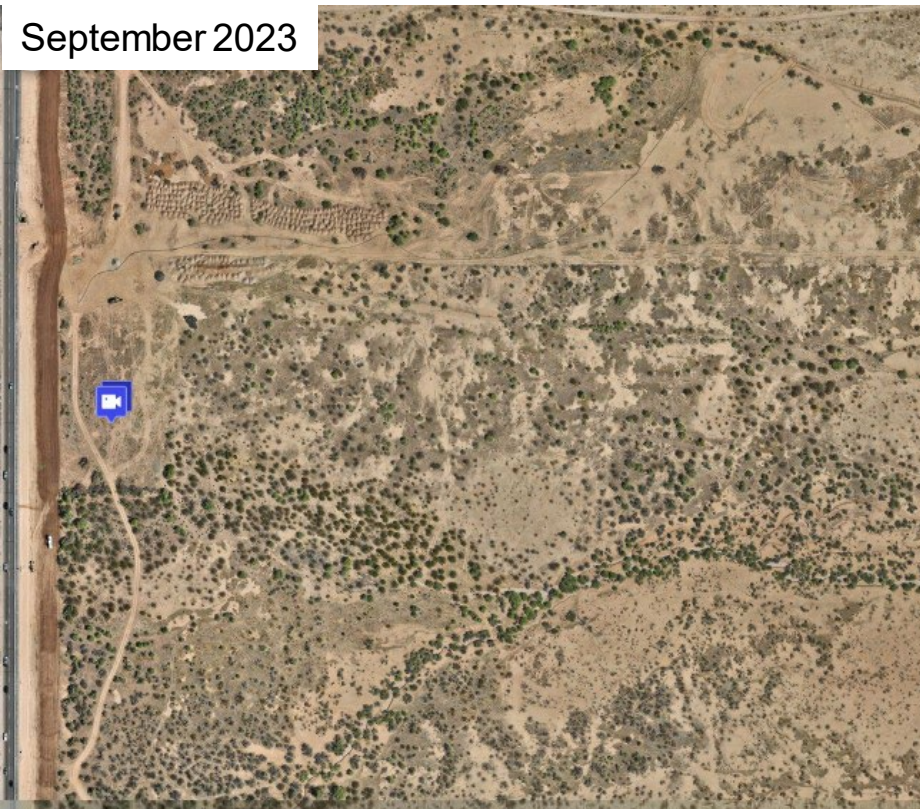


Sewer Improvements	
Water Improvements	
New Roadway	
Roadway Widening	



# LG – Site Development

September 2023



November 2023



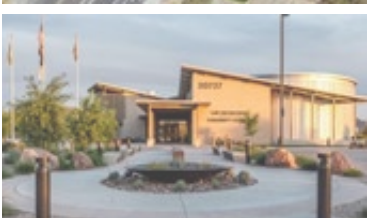
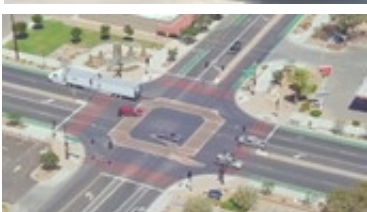


# LG – Site Development

November 2023







Questions?