



Resolution 1547-23 in Support of the Current Effort to Incorporate San Tan Valley

November 15, 2023



Background

- Incorporation requires filing of a petition with including a map and meeting other legal requirements
- Queen Creek has previously approved 3 Resolutions supporting Incorporation efforts: 2004, 2010, 2017*
- The 2017 Queen Creek Resolution supported incorporate if done right and in compliance with the law
- A.R.S. § 9-101.01(D) was amended to remove the requirement for Queen Creek to pass a resolution in support of the incorporation because the proposed San Tan Valley population is larger than Queen Creek's population

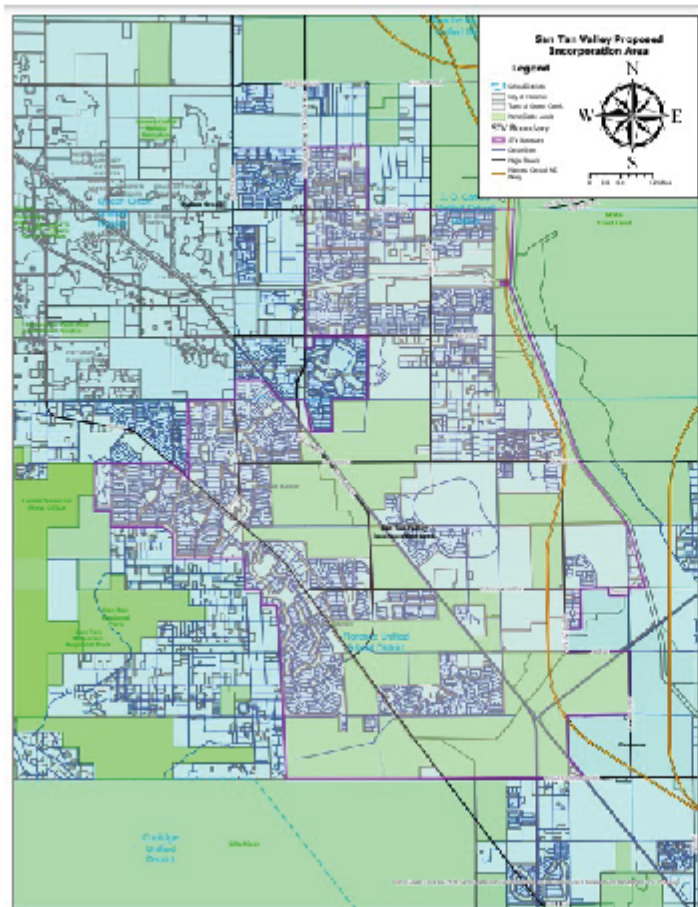




The Current Effort Appears to be Different:

- Better – more legally compliant
- Respects Queen Creek Planning Area
- Less Undeveloped Land
- More Cohesive Community
- More Cooperative Planning Committee
- Committee is Working on an Agreement with the Arizona State Land Department

The Map



Proposed boundaries:



North: Pima Road

East: CAP Canal

South: Arizona Farms Road

West: Queen Creek Planning Area

Approximate population:



91,000 (based on 2020 Census)

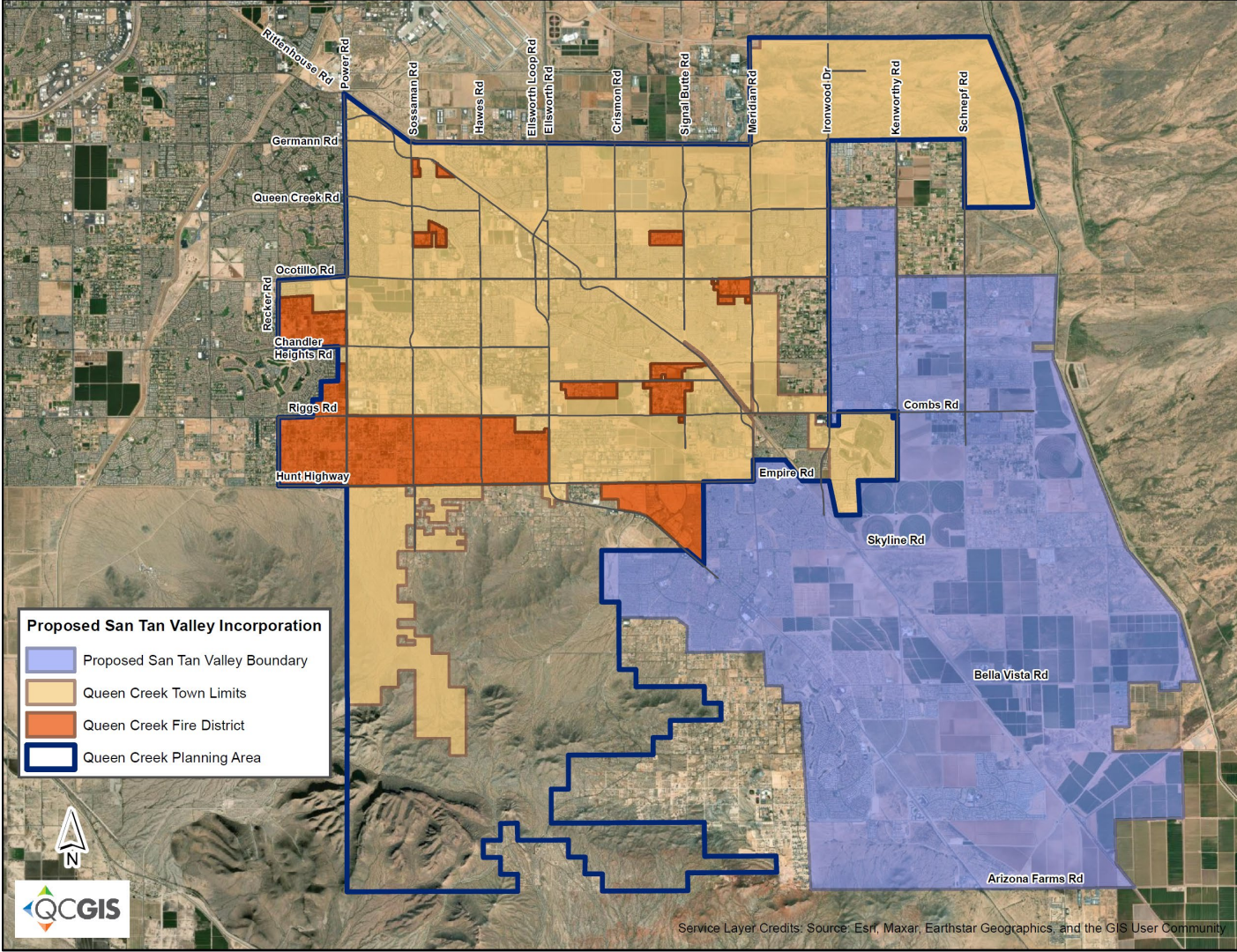
Proposed municipality area:



46.5 Sq. Miles (approx.)

NOTE: This map is a suggested first draft of the STV boundaries.





Proposed San Tan Valley Incorporation

- Proposed San Tan Valley Boundary
- Queen Creek Town Limits
- Queen Creek Fire District
- Queen Creek Planning Area



Resolution 1547-23 in Support of Incorporation

- Recognizes Potential Advantages
- Recognizes the Importance for the Arizona State Land Department Agreement
- Require that the Incorporation Not Interfere with Queen Creek's Municipal Planning Area
- Do not need a Resolution by Queen Creek in support of incorporation, but
- Other municipalities are looking to see what position Queen Creek takes





Discussion

Questions?

