

Queen Creek and Pinal County Small Area Transportation Study Update

Meridian Road/Ray Road/CAP Canal/Combs Road



Mohamed Youssef, PE, PTOE
Public Works Director

Presentation Overview

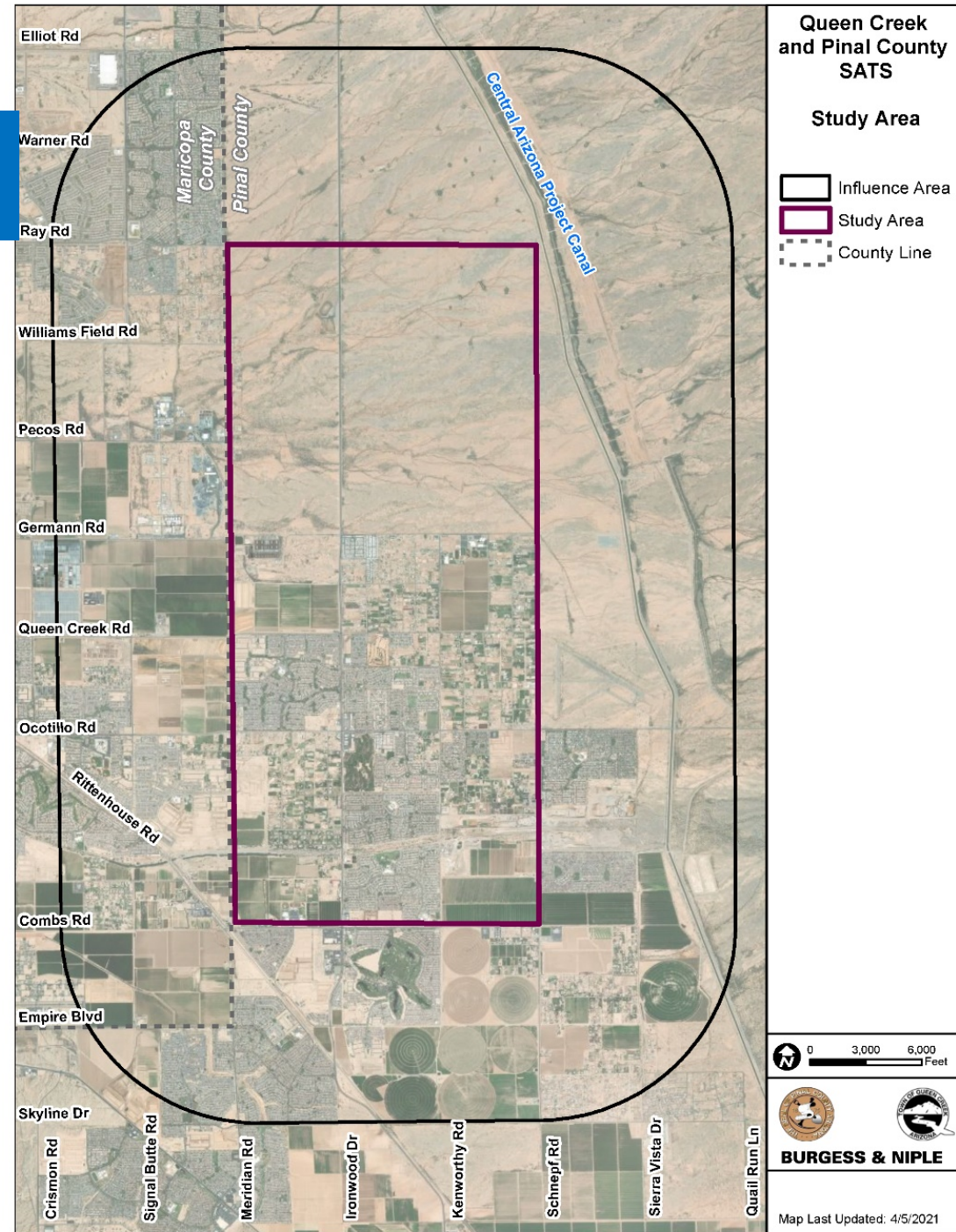


- ❖ Study area & updated study area
- ❖ Existing and 2030 Population and Employment
- ❖ Existing and 2030 Traffic Volume and Level of Service
- ❖ Open Discussion



2020 Study Area

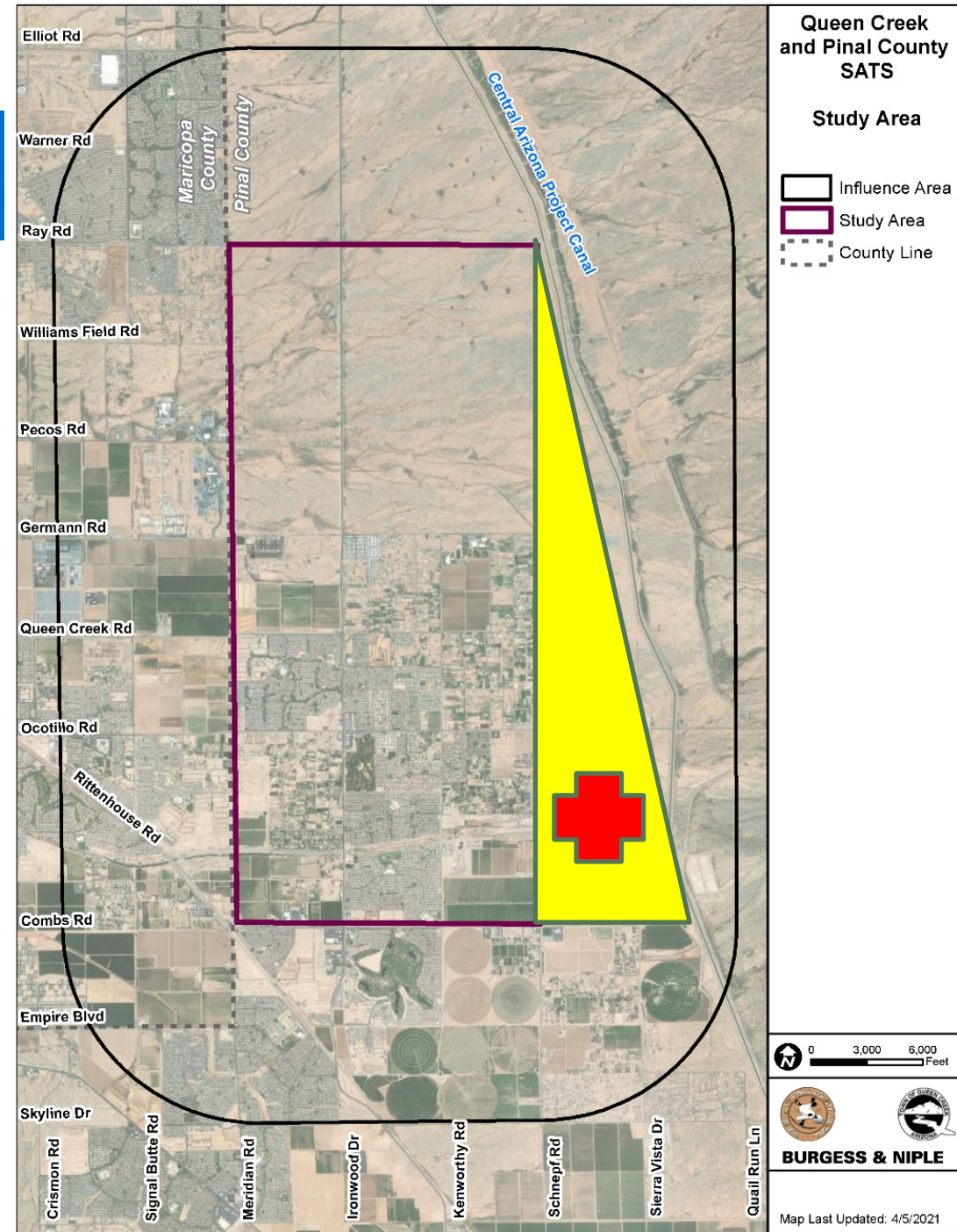
- The study area
- The study influence area includes a two-miles buffer surrounding the study area



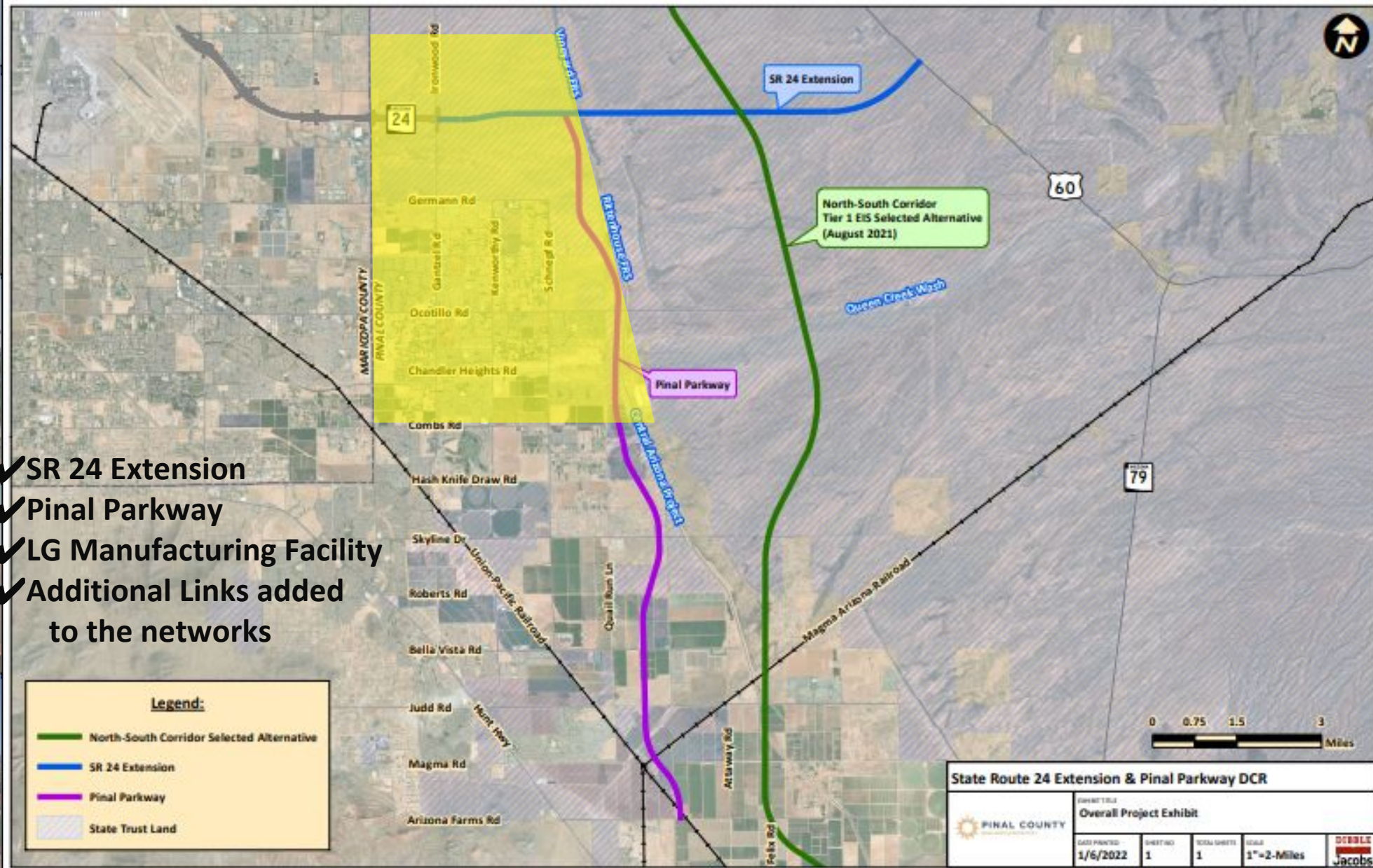
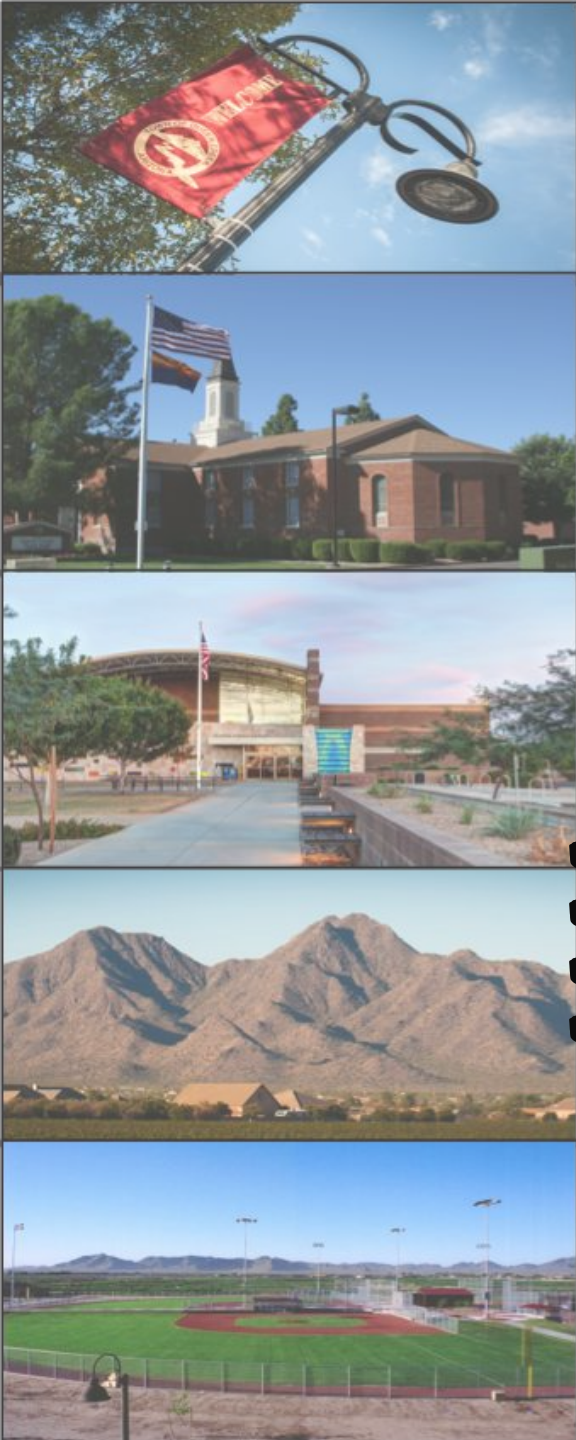


2022 Study Area

- Updated study area
- New Major Developments includes
 - ✓ SR 24 Extension
 - ✓ Pinal Parkway
 - ✓ LG Manufacturing Facility
 - ✓ Additional Links added to the networks



Updated Study Area

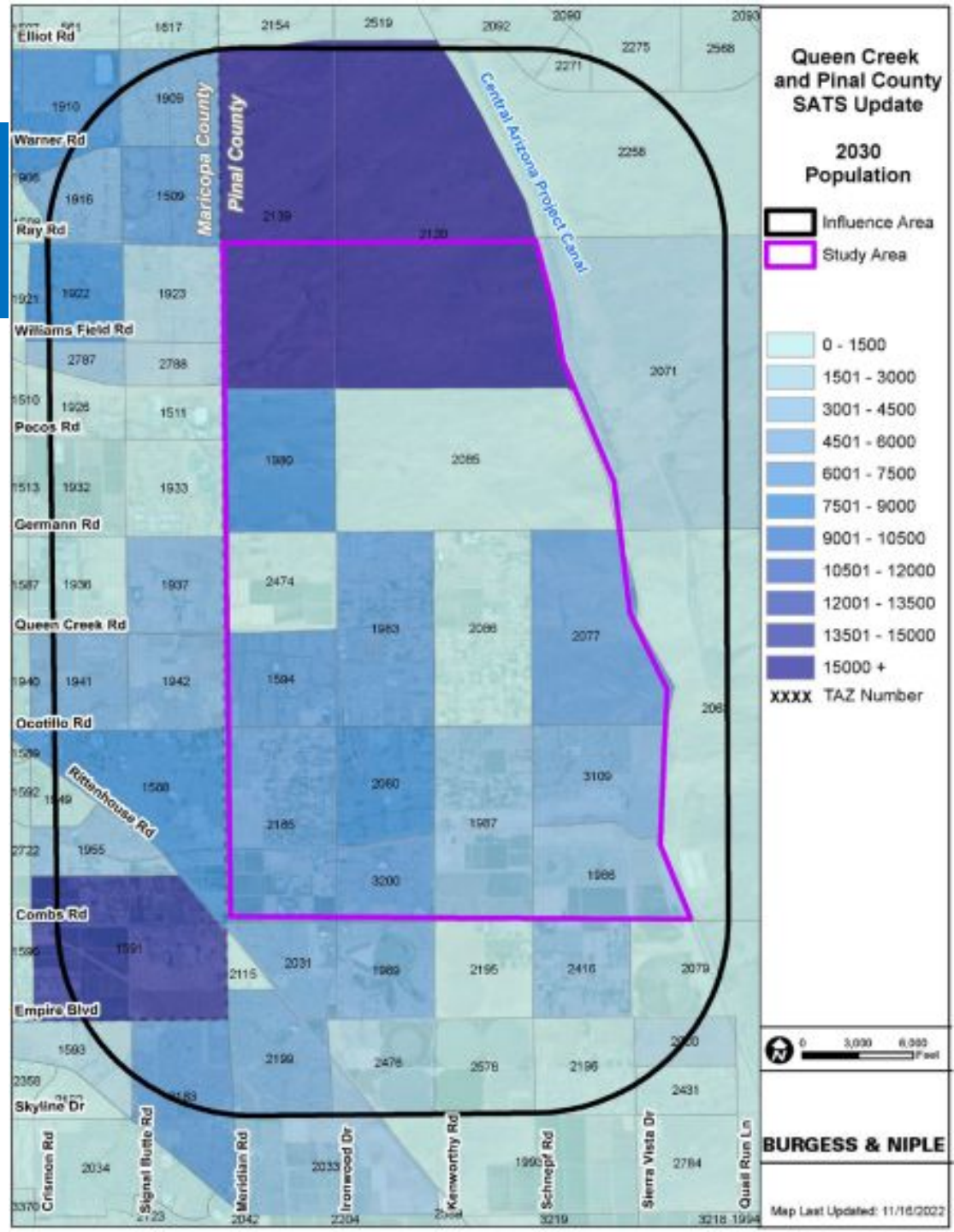


- ✓ SR 24 Extension
- ✓ Pinal Parkway
- ✓ LG Manufacturing Facility
- ✓ Additional Links added to the networks



Projected 2020-2030 Population Growth

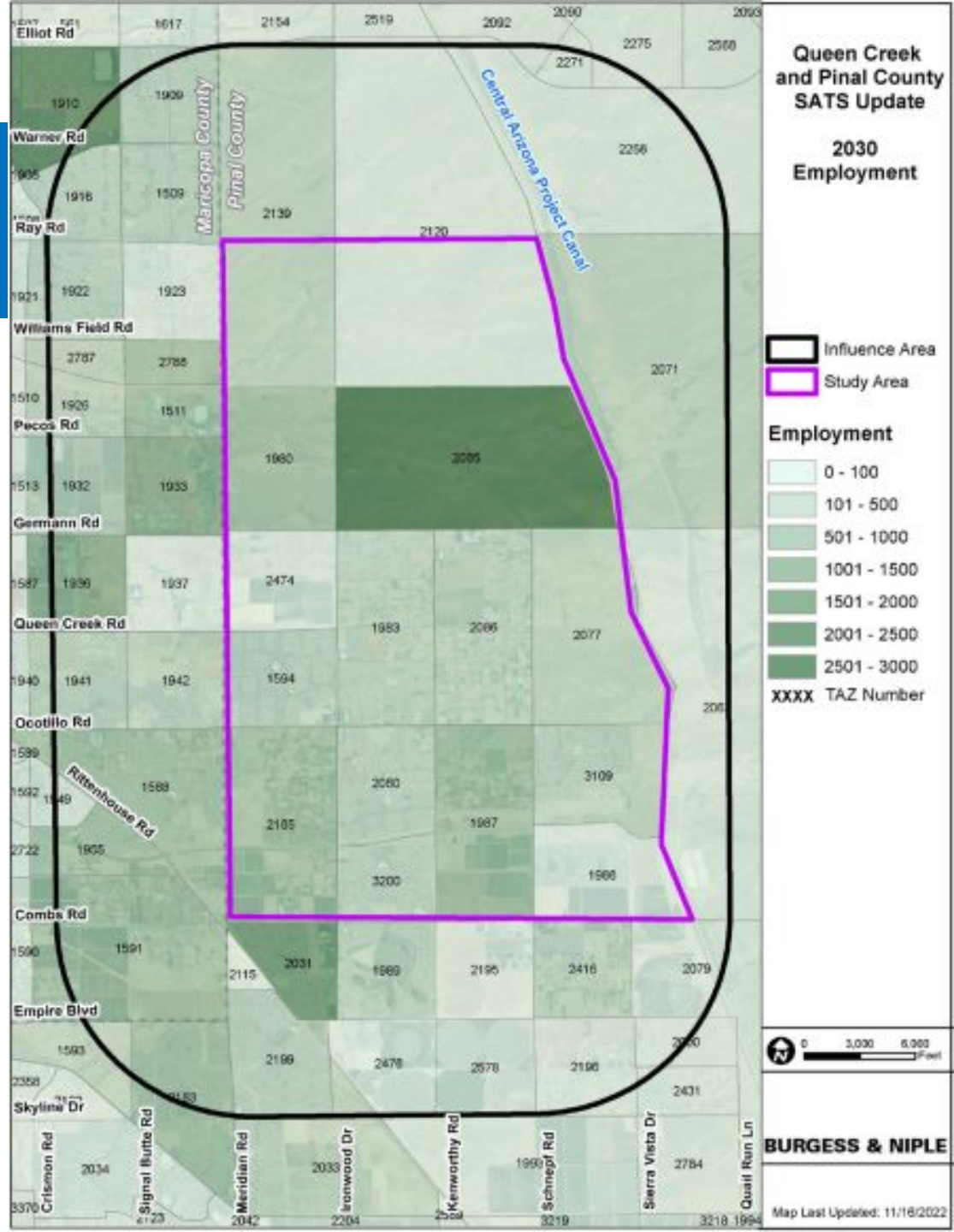
25%





Projected 2020-2030 Employment Growth

9%



Travel Demand Model Evaluation Methodology



Step 1: Base 2022 Model Run

Step 2: Identify Discrepancies and Model Refinement

Step 3: Apply Updated 2030 Socioeconomic Data Sets to Future 2030 Model

Step 4: Future 2030 Model Run and ADT Projections

Step 5: Traffic Volume Refinements

Step 6: Roadway Capacity Analysis and Recommendations

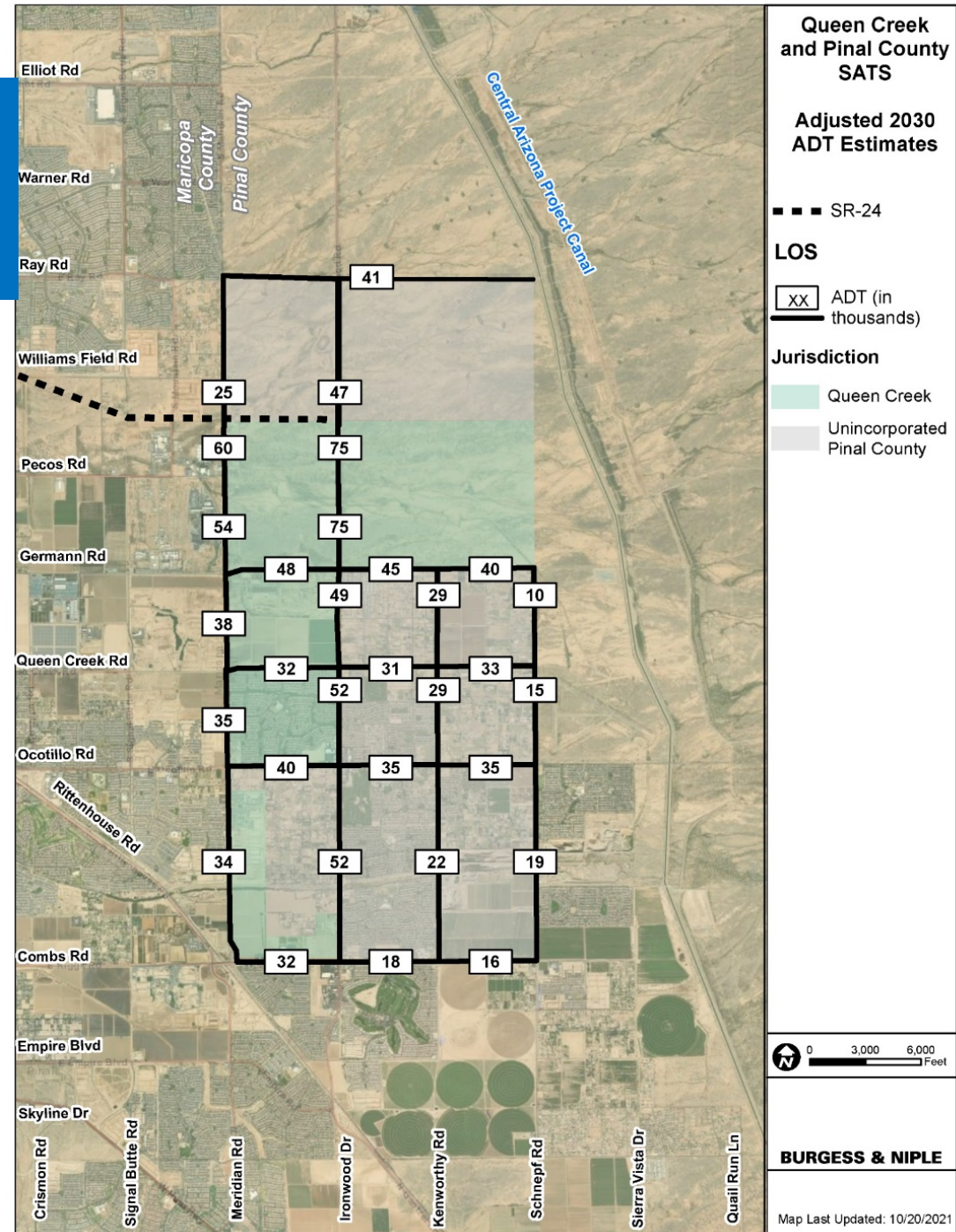


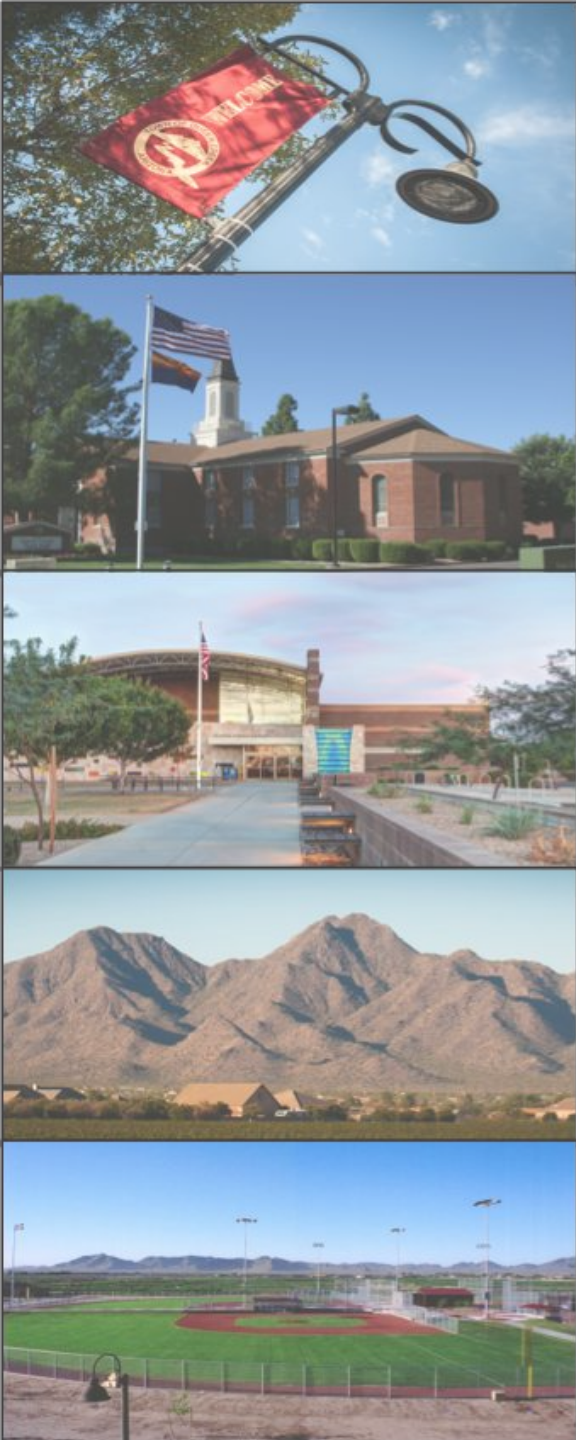
2030 ADT Estimates 1.0

*Arterial Daily Volumes at Capacity

Type of Roadway	Number of Lanes	Capacity (vehicles per day)
Arterial	2	16,500
Arterial (no median)	4	32,000
Arterial (with median)	4	35,500
Arterial (no median)	6	49,000
Arterial (with median)	6	54,000

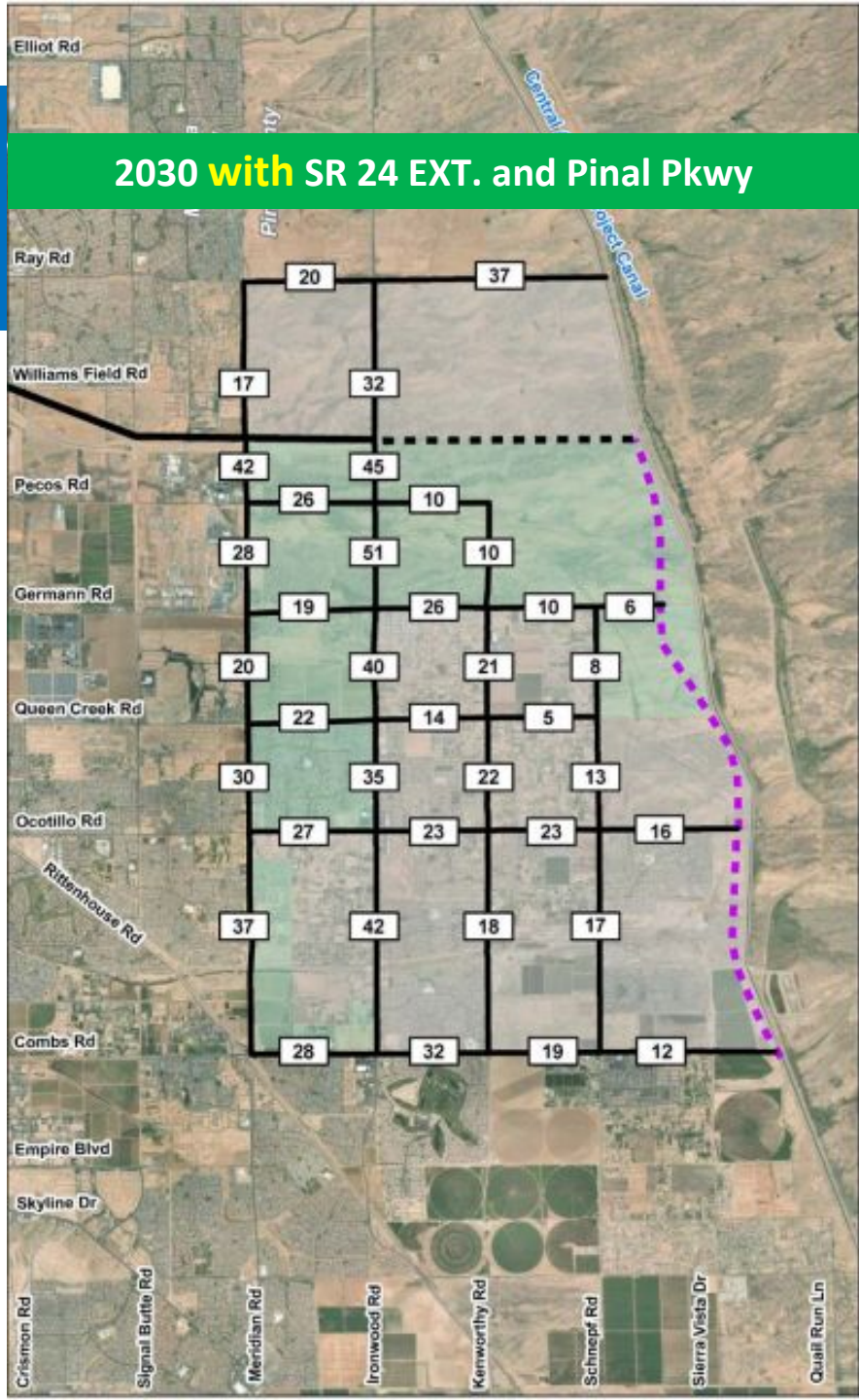
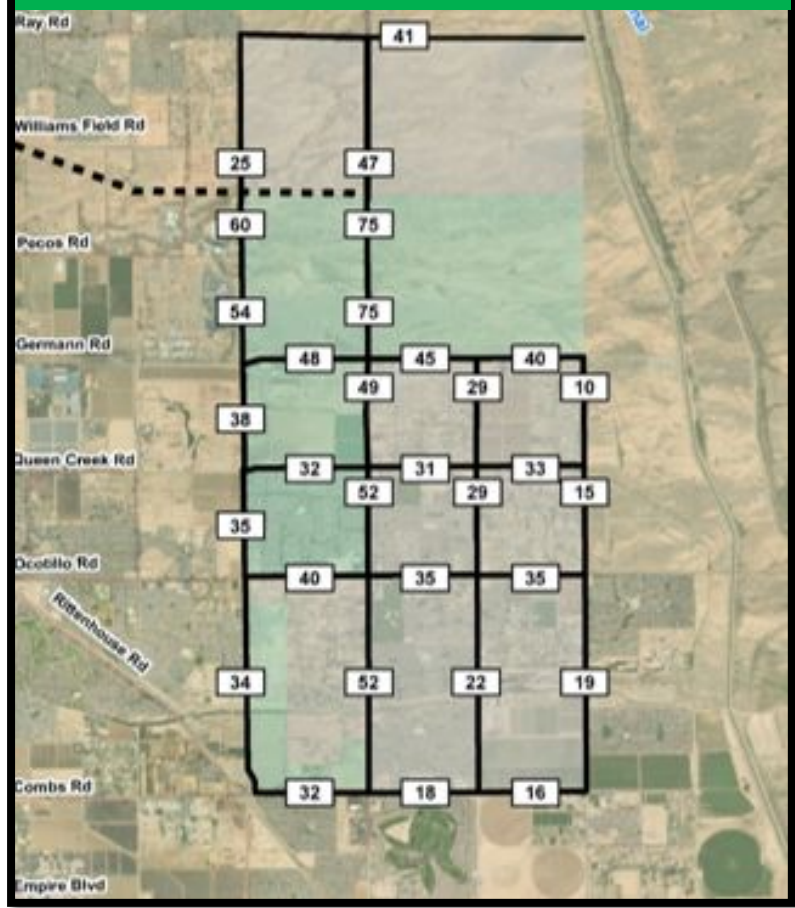
*Per the 2020 Queen Creek Transportation Master Plan Update





2030 ADT Estimates 2.0

2030 **without** SR 24 EXT. and Pinal Pkwy



2030 **with** SR 24 EXT. and Pinal Pkwy

Queen Creek and Pinal County SATS Update

Adjusted 2030 ADT Estimates

- SR-24
- Interim SR-24
- Central Arizona Parkway

LOS

XX ADT (in Thousands)

Jurisdiction

- Queen Creek
- Unincorporated Pinal County

0 0.5 1 Miles

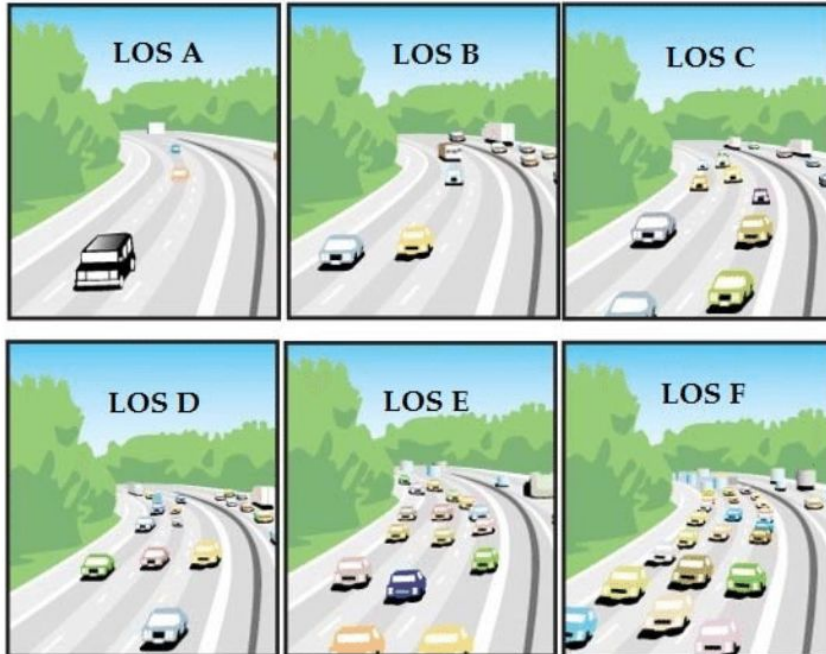
BURGESS & NIPLE

Service Layer Credits: Source: Carl, Masser, GeoEye, Earthstar Geographics, CNES/Airbus DS, USDA, USGS, etc.

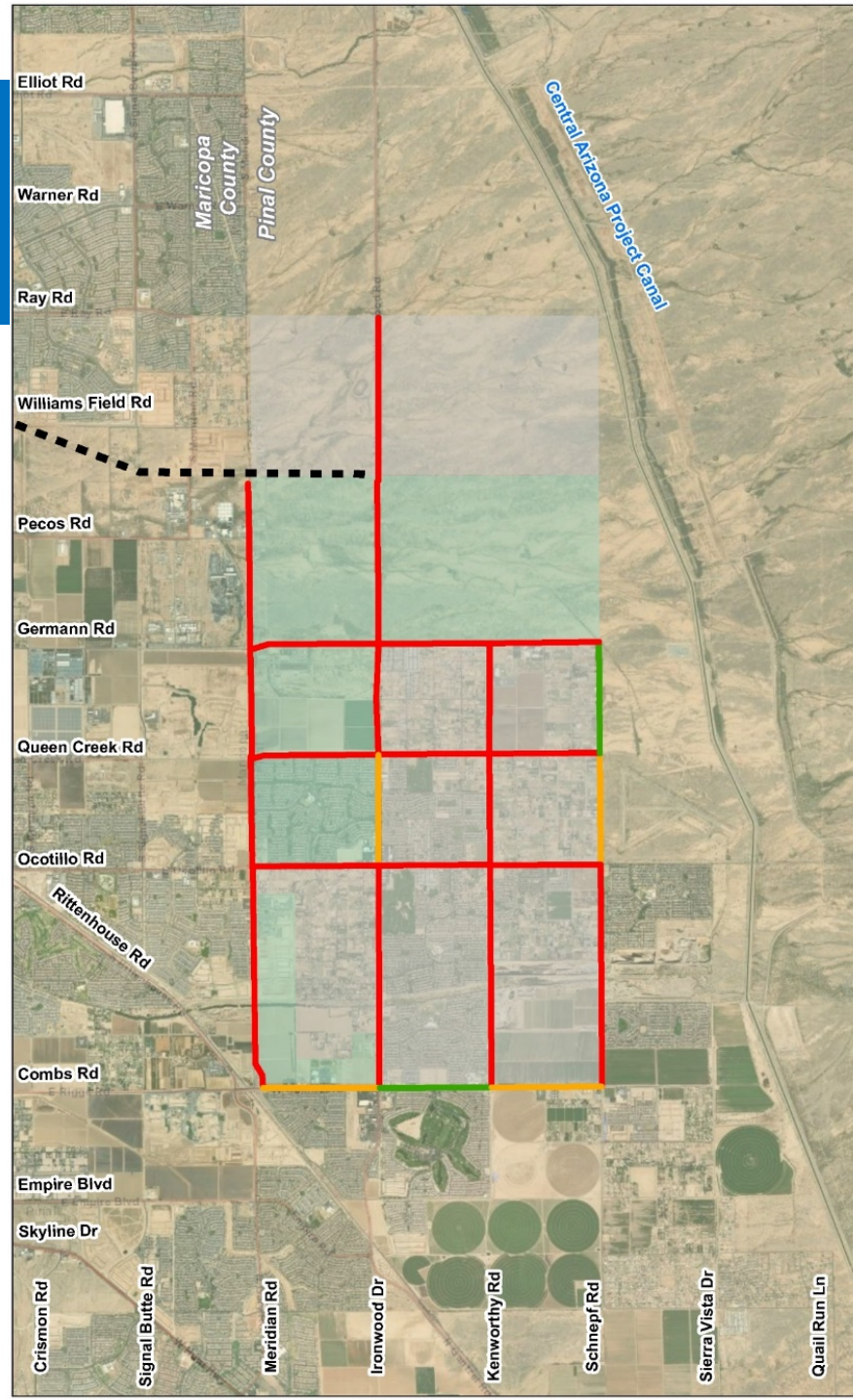
Map Last Updated: 2/27/2023



2030 Level of Service 1.0



- LOS**
- █ A-C
 - █ D
 - █ E
 - █ F



Queen Creek and Pinal County SATS

2030 Level of Service

- - - SR-24
LOS
█ A-C
█ D
█ E
█ F

Jurisdiction
 Queen Creek
 Unincorporated Pinal County

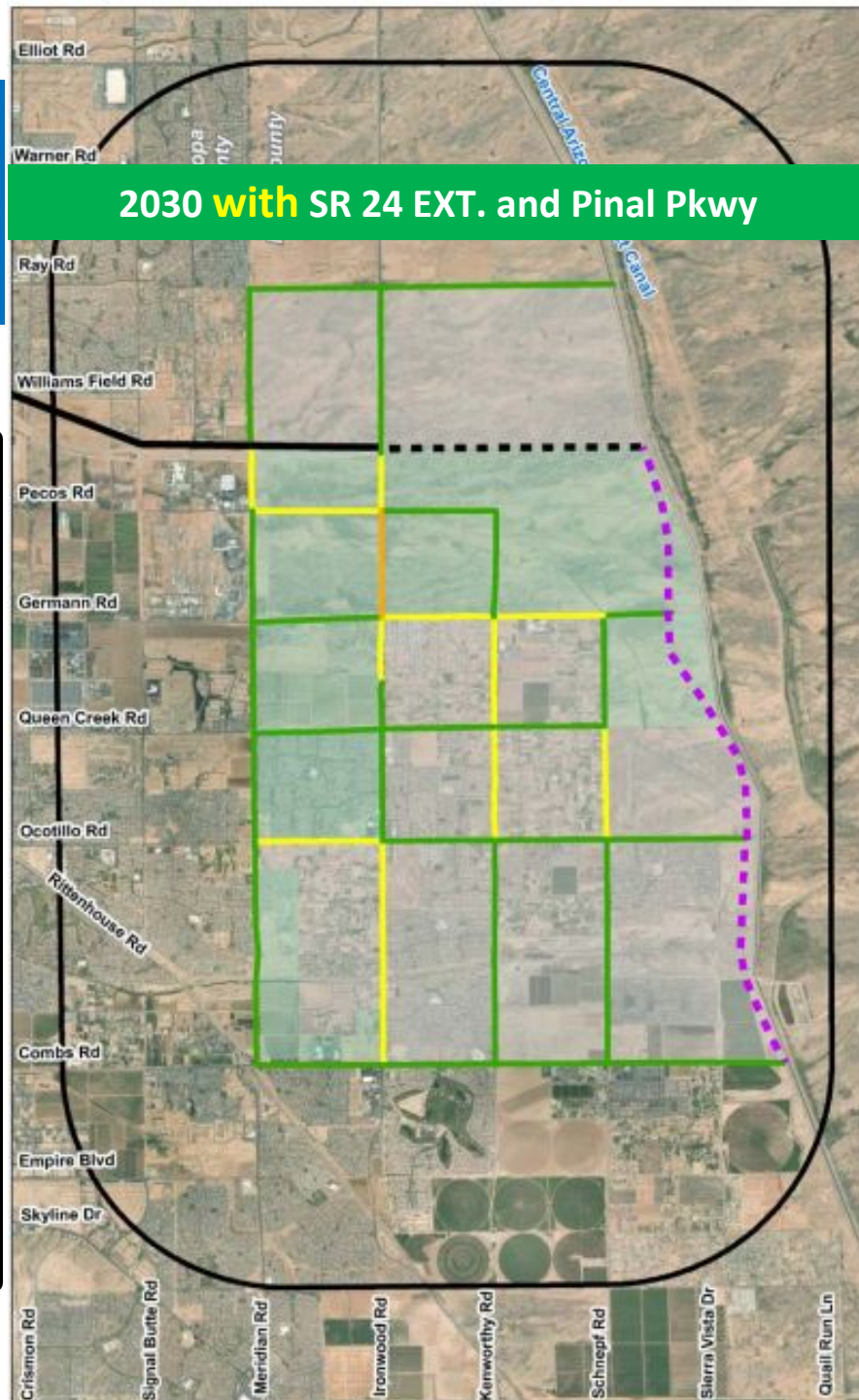
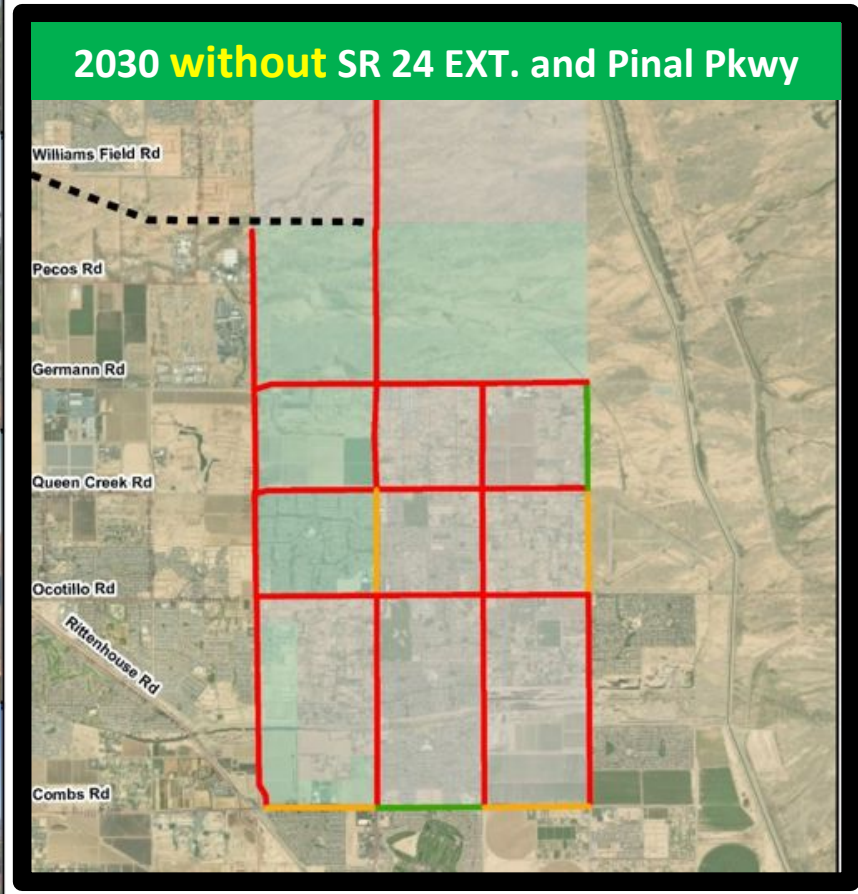
0 3,000 6,000 Feet

BURGESS & NIPLE

Map Last Updated: 10/20/2021



2030 Level of Service 2.0



Queen Creek and Pinal County SATS Update

Level of Service Recommended Network

- SR-24 (Solid black line)
- Interim SR-24 (Dashed black line)
- Central Arizona Parkway (Dashed purple line)

LOS

- A; B; C (Green line)
- D (Yellow line)
- E (Orange line)

Jurisdiction

- Queen Creek (Light green shading)
- Unincorporated Pinal County (Light grey shading)

0 0.5 1 Miles

BURGESS & NIPLE

Service Layer Credits: Source: Esri, Maxar, GeoEye, Earthstar Geographics, CNES/Airbus DS, USDA, USGS

Map Last Updated: 2/27/2023

