

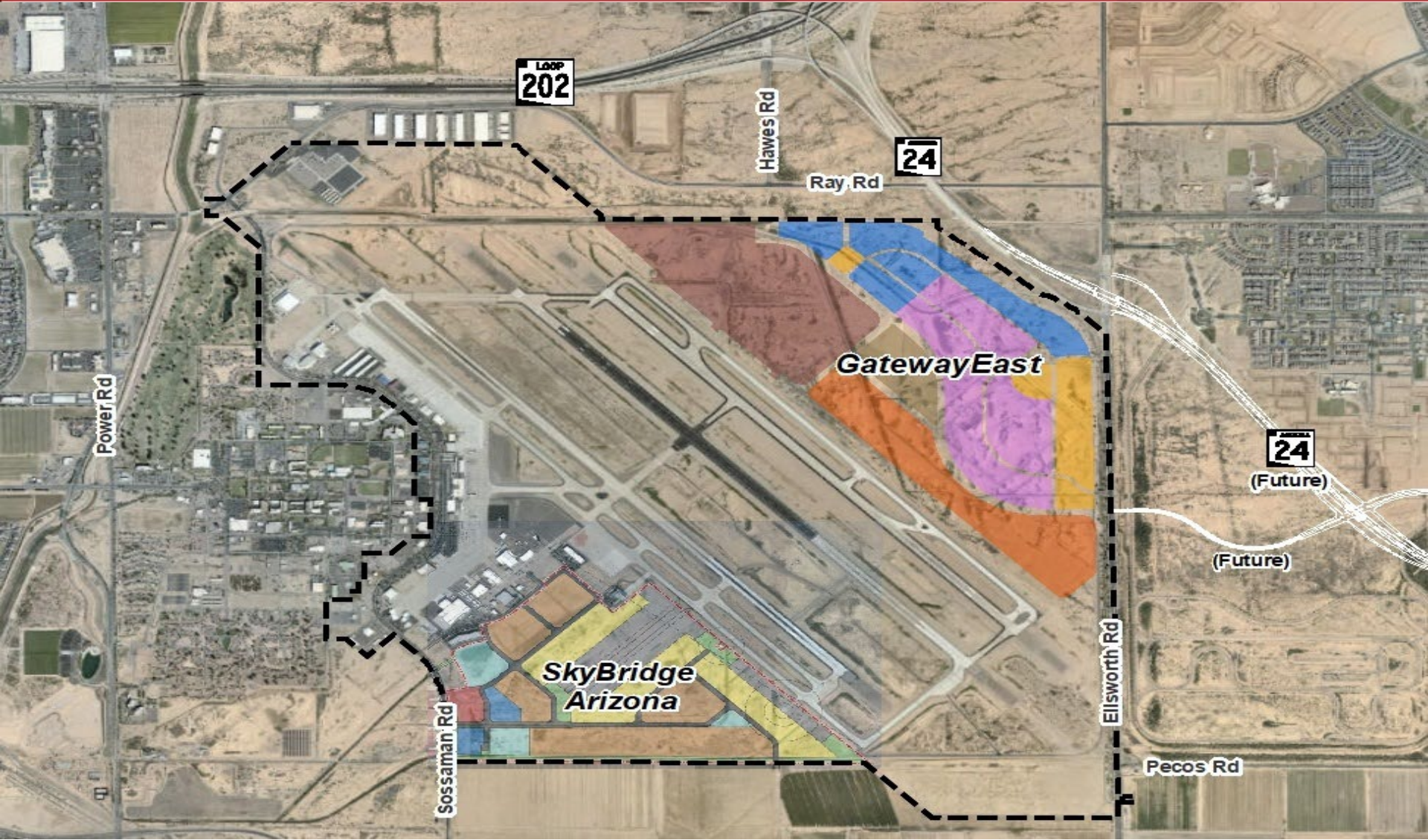


# Queen Creek Town Council Update

March 1, 2023



# Phoenix-Mesa Gateway Airport



# Community Noise Calls - 2022



Community	Number of Unique Callers in 2022*
Mesa	63
Gilbert	51
Queen Creek	17
Apache Junction	3
Queen Valley	2
Gold Canyon	1
<b>TOTAL</b>	<b>137</b>

\*Unique callers are recorded once each month regardless of the number of calls made that month

# Nonstop Route Map



# Commercial Passenger Activity



## Total Commercial Passengers

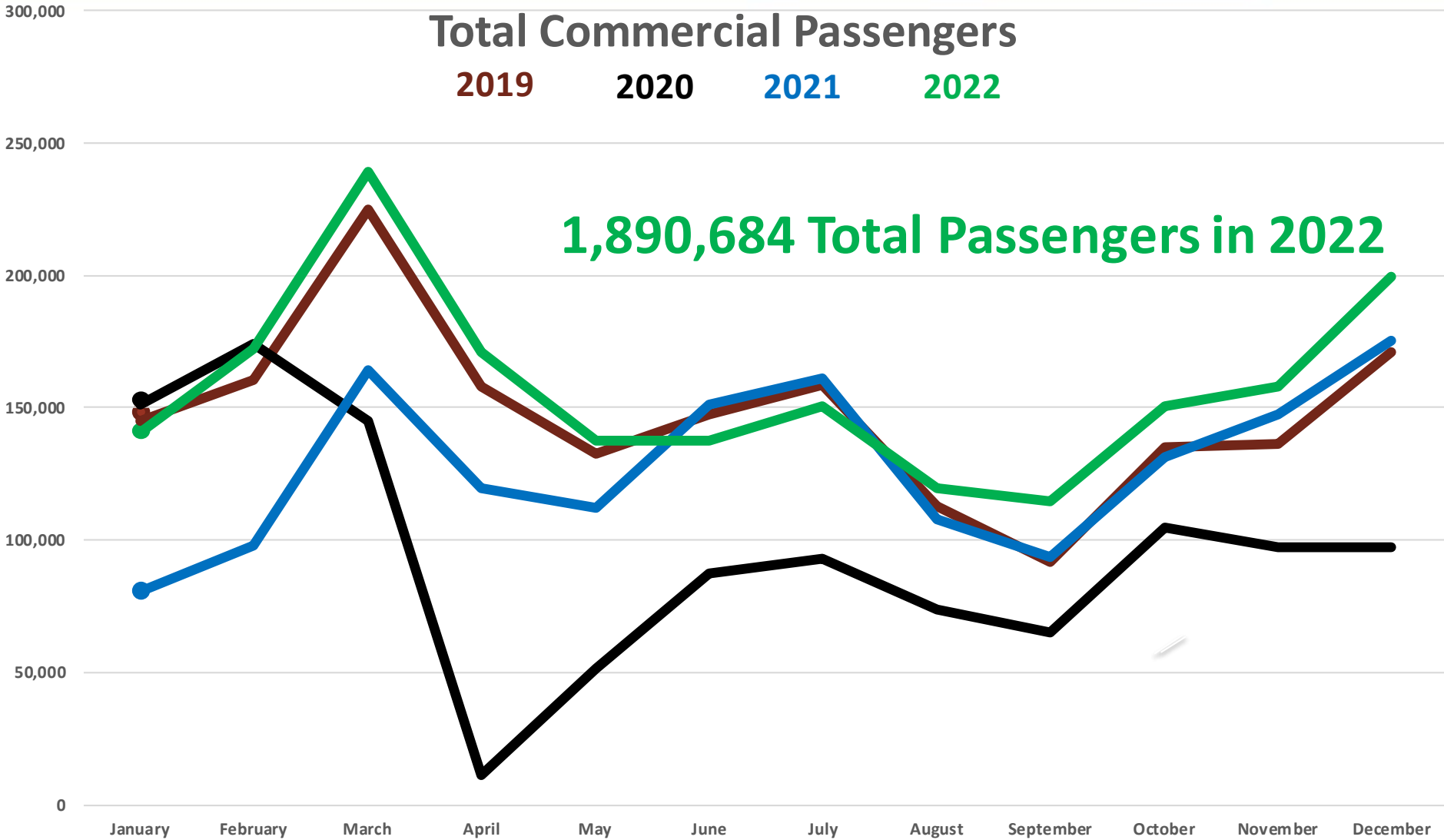
2019

2020

2021

2022

1,890,684 Total Passengers in 2022



# Terminal Food, Beverage & Retail Concessions Program



# Macayo's Mexican Food & Infusion Coffee and Tea Crafters



# Five-Gate Terminal Addition





# Five-Gate Terminal Addition



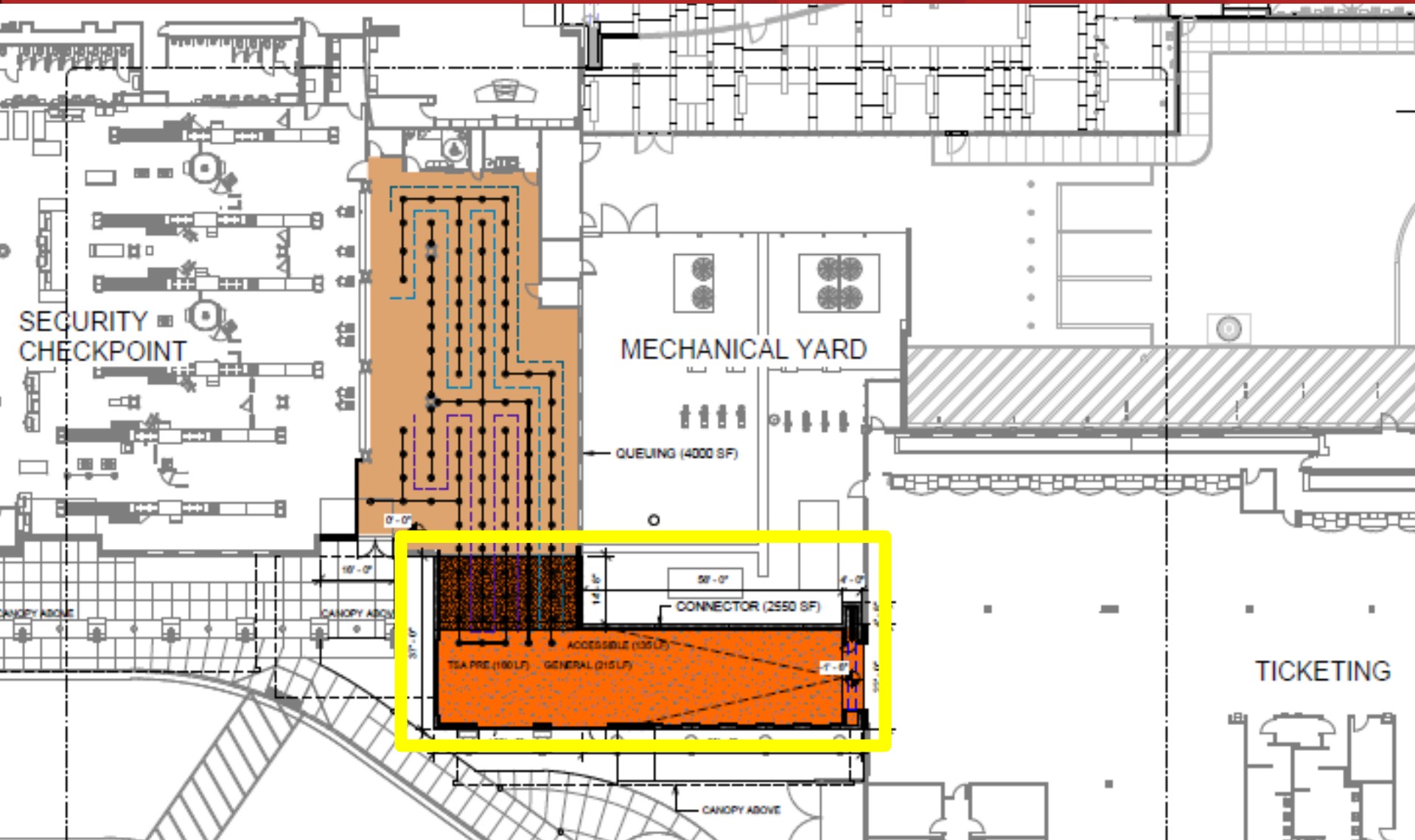
# Five-Gate Terminal Addition



# Temporary 3-Gate Terminal



# Enclosed Pedestrian Walkway



# Enclosed Pedestrian Walkway



# Enclosed Pedestrian Walkway



# Gateway Executive Airpark's 183,000 SF Hangar Complex



5559 S. SOSSAMAN RD, MESA, ARIZONA 85212



Gateway Executive Airpark

# Gateway Executive Airpark's 183,000 SF Hangar Complex





# Virgin Galactic Manufacturing Facility



# SkyBridge Arizona



# SkyBridge Arizona Hotel



Phoenix-Mesa  
**Gateway**  
Airport



# SkyBridge Arizona Hotel Site



# SkyBridge Arizona Groundbreaking



# Gulfstream Aerospace Service Center



Gulfstream Aerospace Corp.

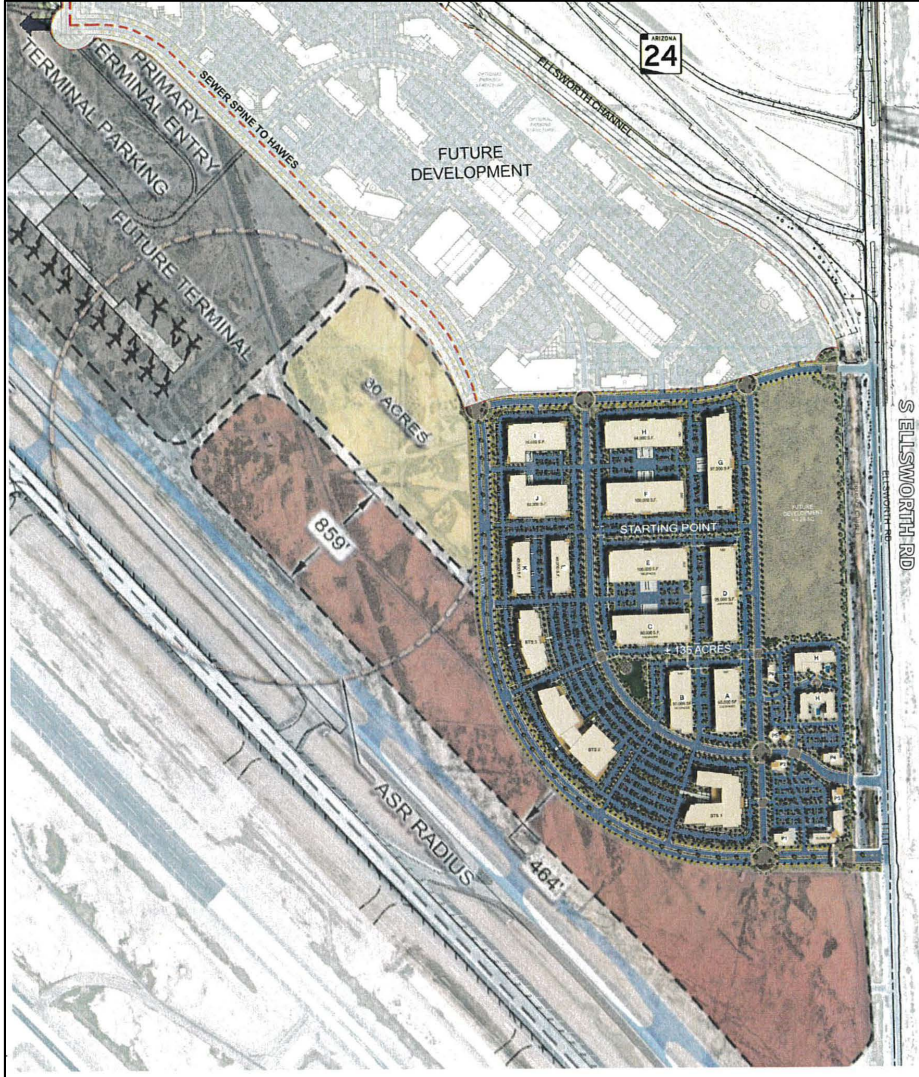


# Gateway*East* Development





# GatewayEast Master Development



# Gateway*East* Master Development



# Air Traffic Control Tower



# Alpha Apron Phase IV



**250,000 Sq. Ft.**



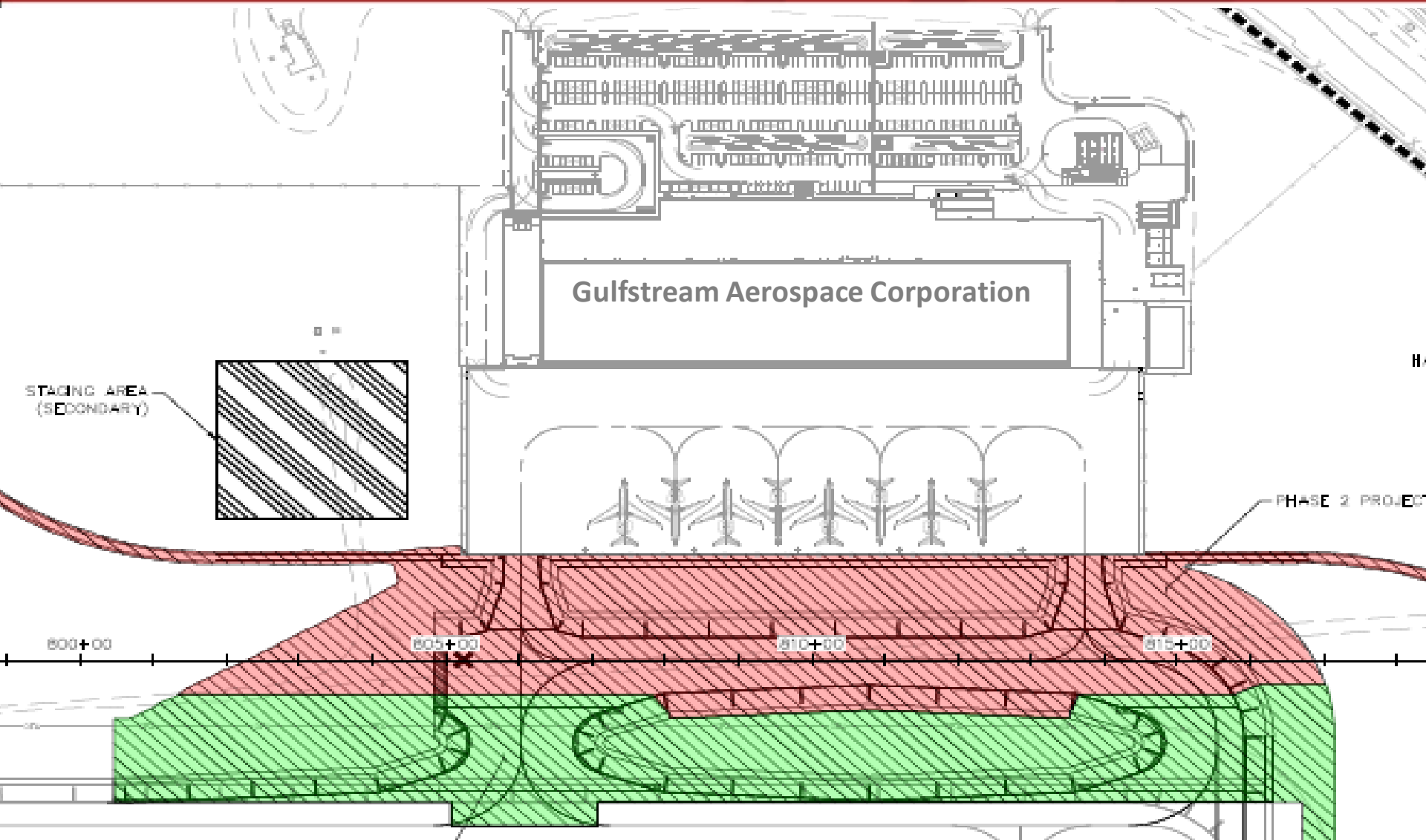
# Taxiway 12C/30C Reconstruction



# Taxiway 12C/30C Reconstruction



# Gulfstream Taxiway Connectors

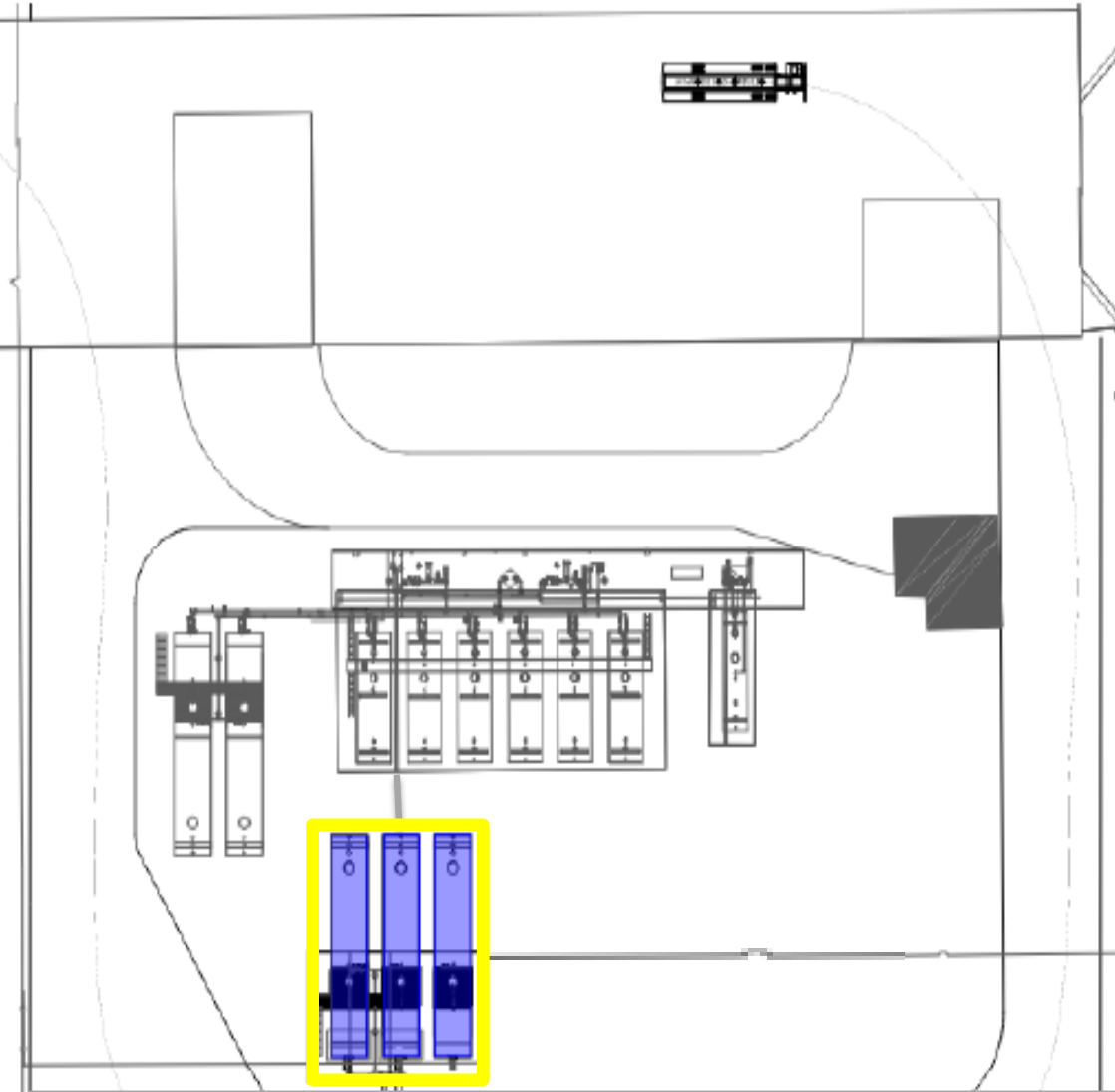


# Gulfstream Taxiway Connectors



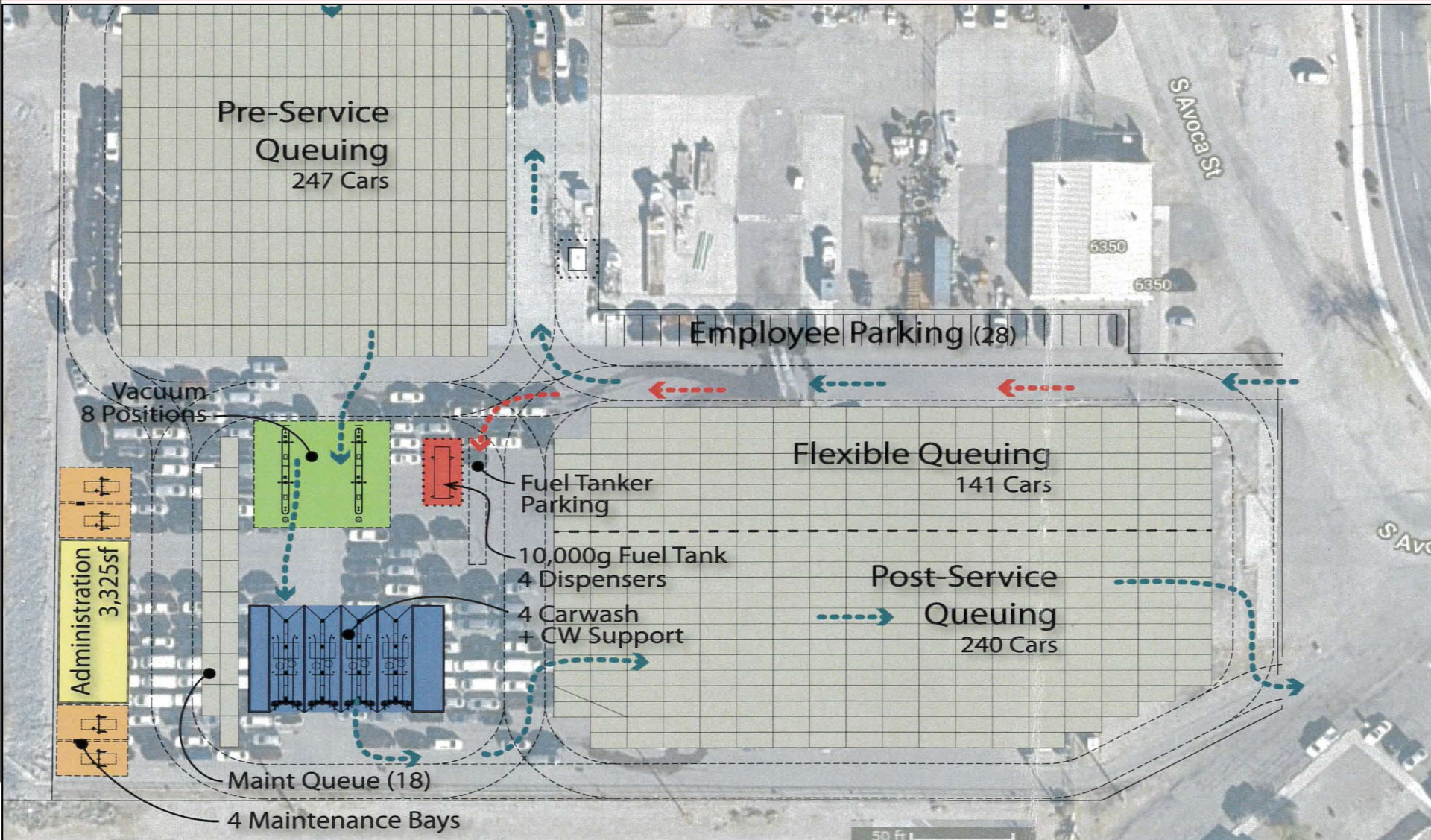


# Fuel Farm Storage Tank Expansion

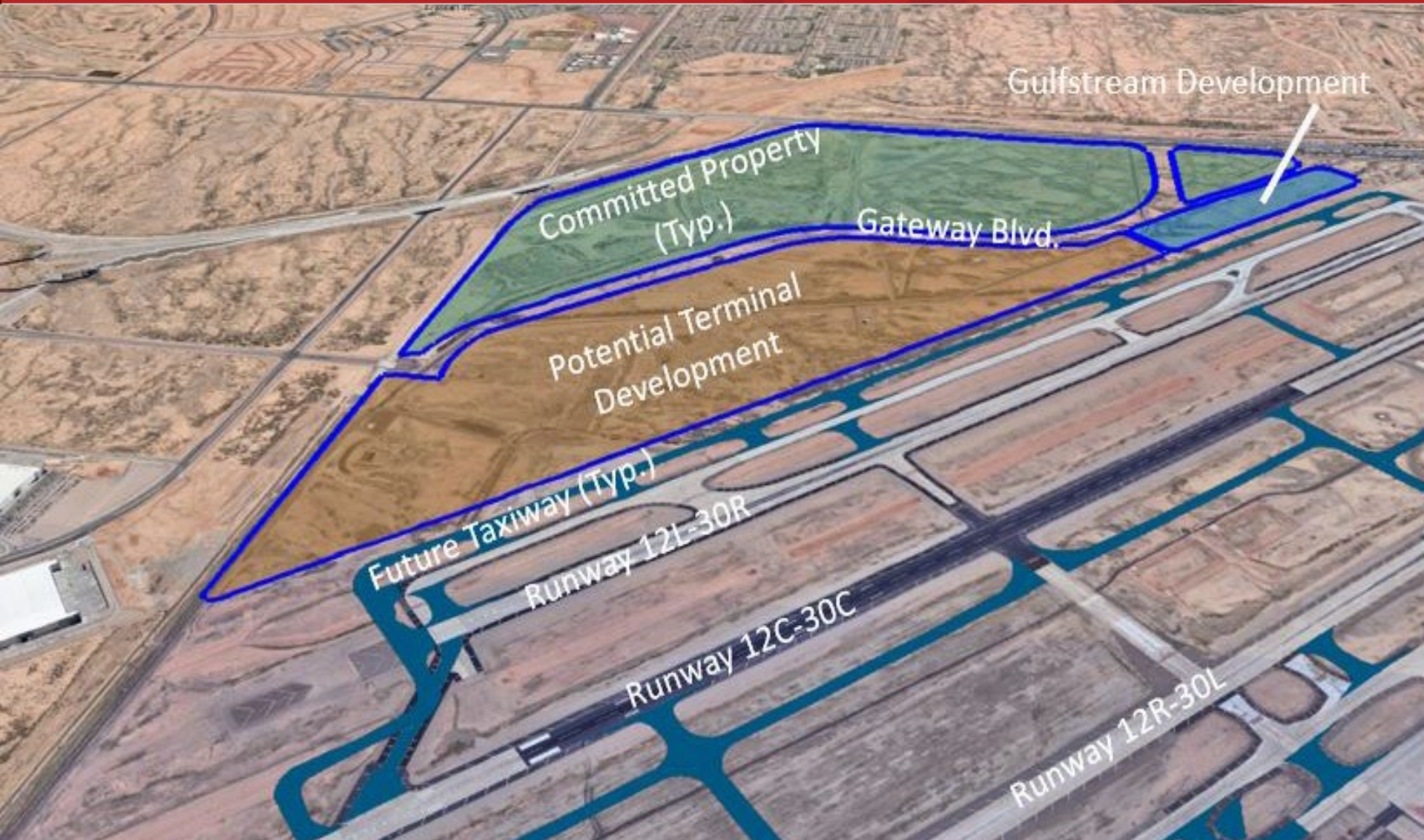


- Current Fuel Storage:
  - 250,000 Gallons
  - 4-Day Supply
  - Susceptible to Fuel Delivery Disruptions
- Additional Storage:
  - 150,000 Gallons
  - 3-Day Supply
- Future Fuel Storage:
  - 400,000 Gallons
  - 7-Day Supply
  - Protected Against Fuel Delivery Disruptions

# Rental Car Care Lot Redevelopment



# Gateway Tomorrow East Side Terminal Planning Initiative



## **Airport Facilities and Infrastructure to be Considered:**

- Roadways - Entrance and Circulation
- Parking – Terminal Tenant and Customer/Surface or Structure
- Terminal – Size, Number of Gates/Ground Loaded or Jet Bridges
- Aviation Fuel Farm – Storage Tanks or Pipeline
- Car Rental Facility – Terminal or CONRAC
- TSA Security Screening Checkpoint
- Terminal Food, Beverage, and Retail Concessions
- Ground Transportation – Taxi, Limo, Bus, Uber, Lyft, Turo
- Federal Inspection Services (U.S. Customs)
- Airport Operations/Control
- PMGAA Administrative Offices
- Law Enforcement Facilities

# ADOT Airport Economic Impact Study Phoenix-Mesa Gateway Airport Data



**\$829.4M - On-Airport Activities**



**\$241.2M – Visitor Spending**



**10,244 – Full Time Persons Employed**



**\$524.2M – Total Compensation Paid to Workers**



**\$1.8B – Economic Activity Attributable to Airport**

**Thank you!**