



Desert UTV Conditional Use Permit (P21-0246)

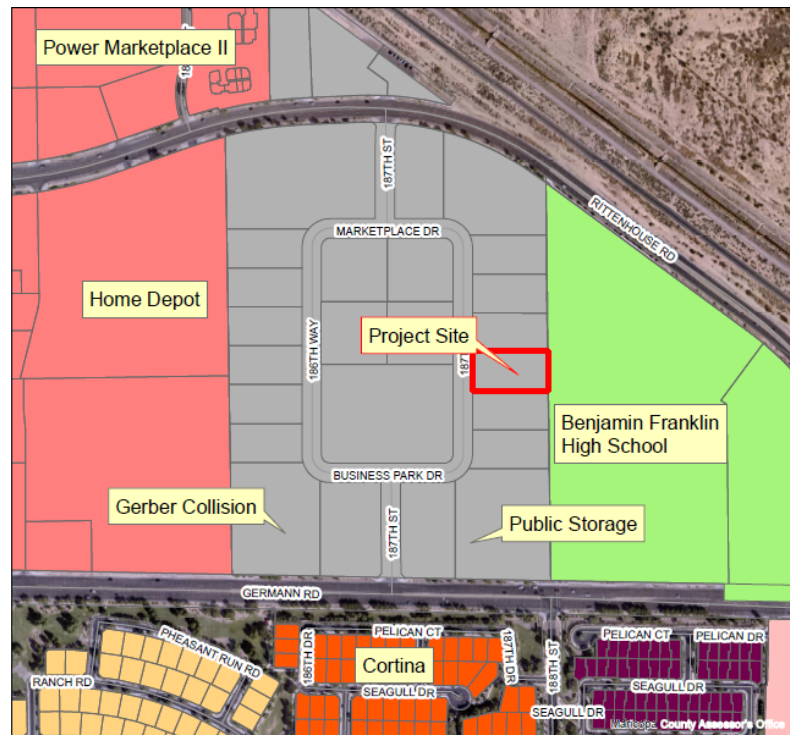
Town Council
March 16, 2022



Aerial Map Exhibit



Zoning Map Exhibit



Zoning Districts

C-1 - Commercial	PQP - Public/Quasi-Public	R1-7 - Residential	R1-35 - Residential
C-2 - Commercial	RC - Recreation/Conservation	R1-8 - Residential	R1-43 - Residential
C-3 - Commercial	MDR - Residential	R1-9 - Residential	R1-54 - Residential
TC - Commercial	R1-4 - Residential	R1-12 - Residential	R1-190 - Residential
EMP A - Office/Industrial Park	R1-5 - Residential	R1-15 - Residential	PCD - Planned Community
EMP B - General Industrial	R1-6 - Residential	R1-18 - Residential	AT - Agritainment



Request

- CUP for RV Service and Outdoor Storage in EMP-A



Site Plan

- 11,282sq.ft. building on 1.14 acres



Neighborhood Meeting

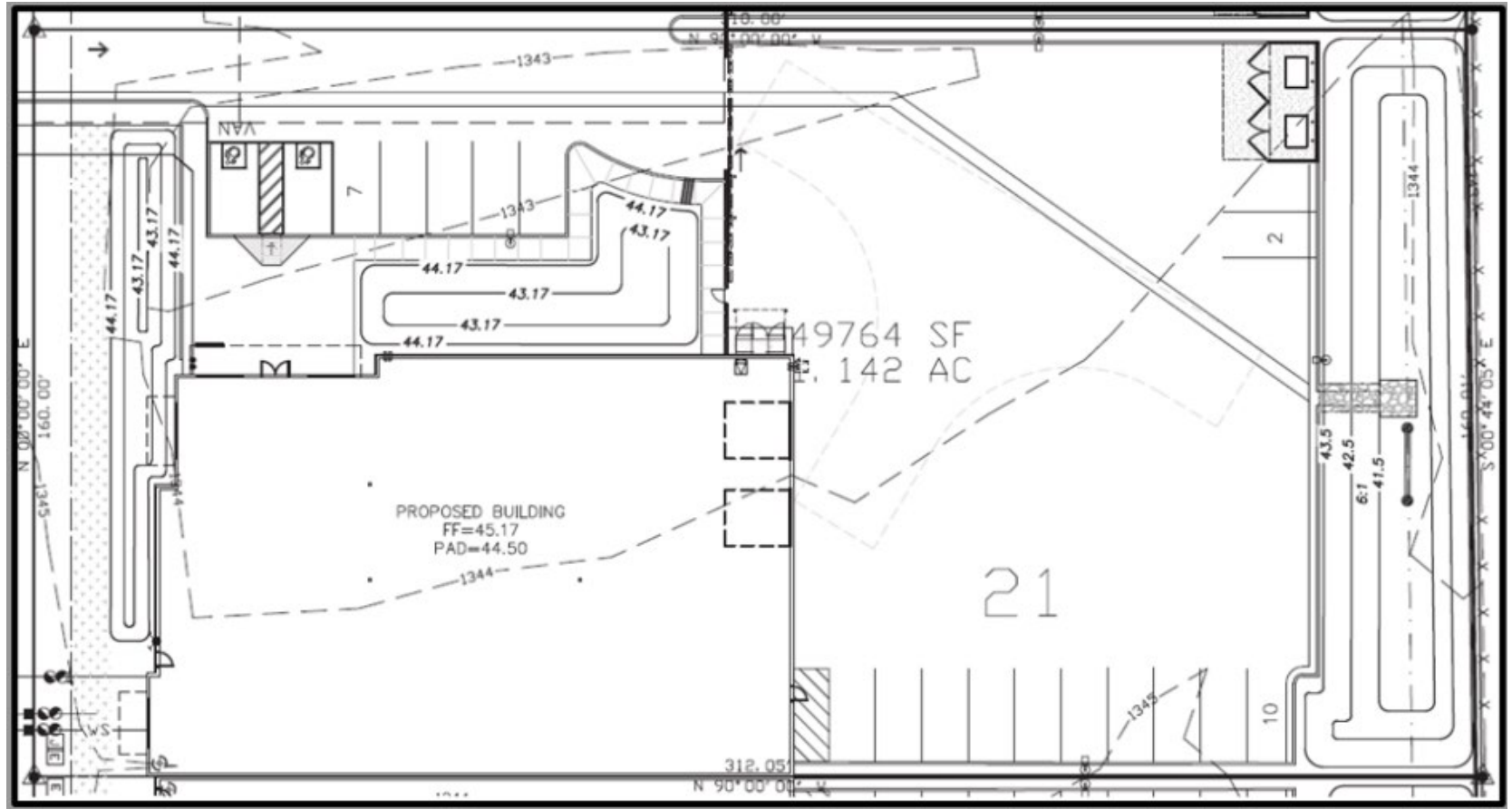
- January 25, 2022: no members of the public in attendance
- To date staff has received one email in support of the project
- No other comments have been received



Planning Commission Vote: 7-0



Site Plan



Elevations





Thank you!