

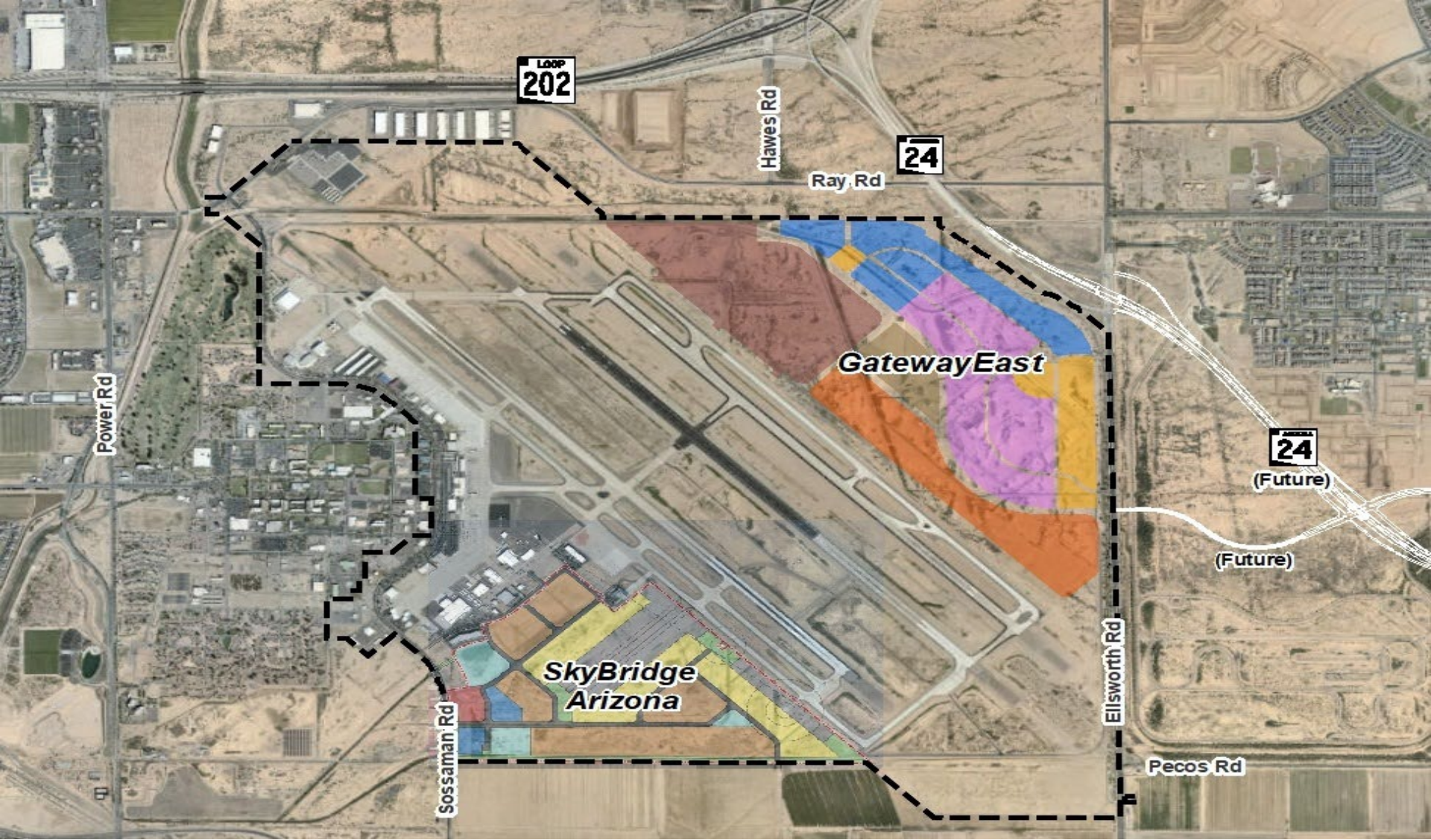
Phoenix-Mesa Gateway Airport Update

March 2, 2022



TOWN OF
QUEEN CREEK
ARIZONA

Phoenix-Mesa Gateway Airport

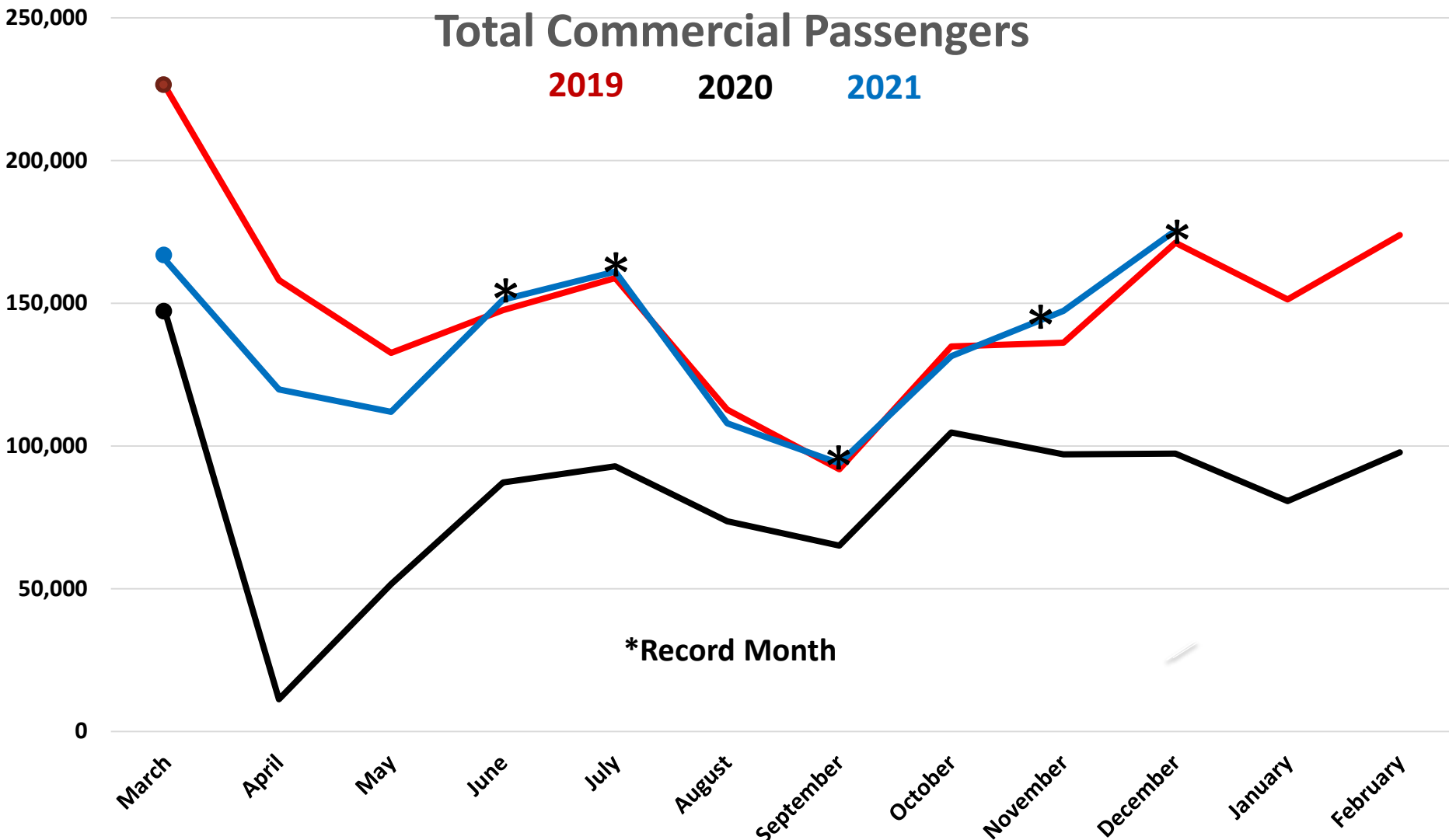


Commercial Passenger Recovery



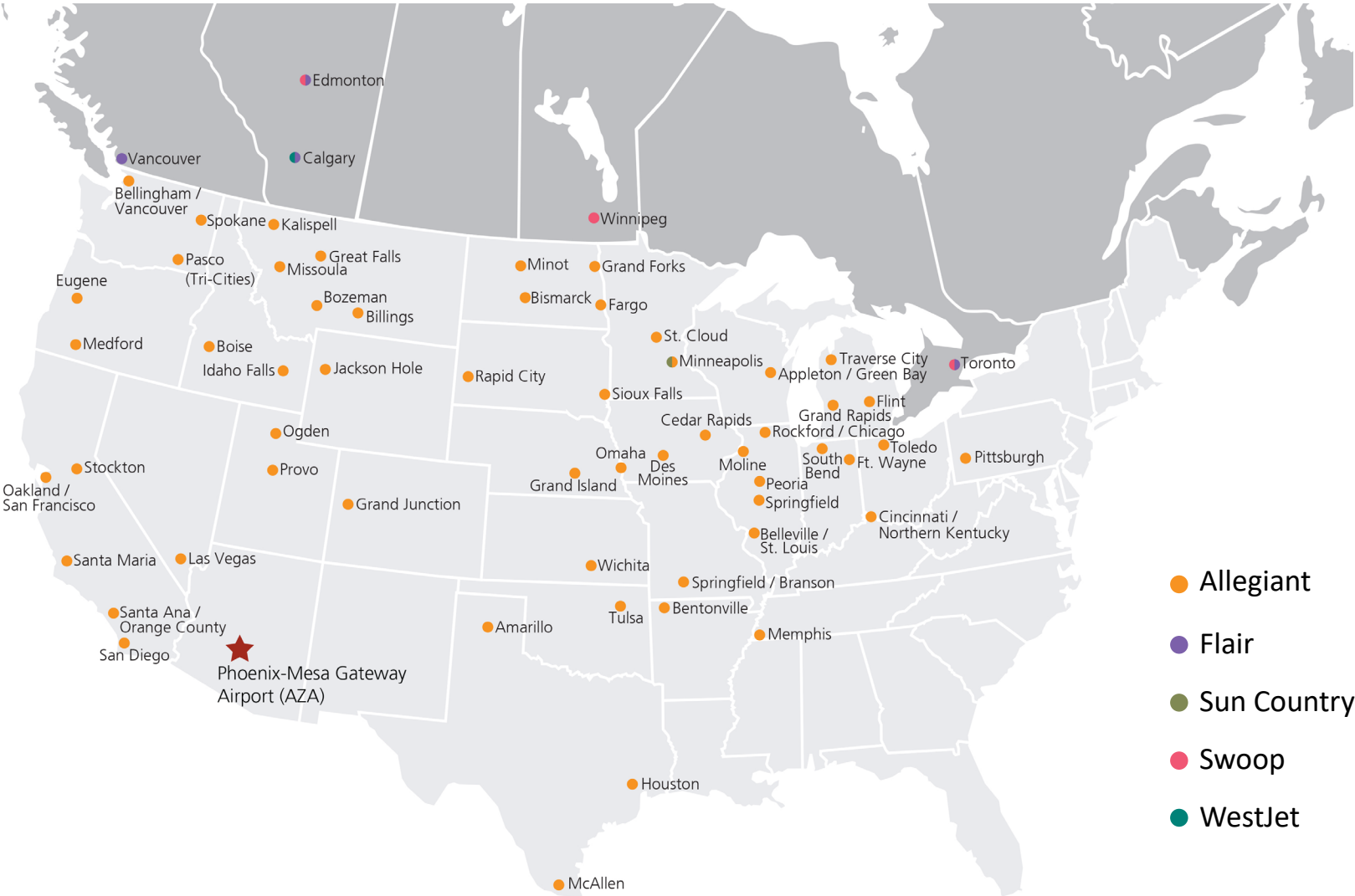
Total Commercial Passengers

2019 2020 2021



*Record Month

Nonstop Route Map



2020 – 2021 Community Noise Calls

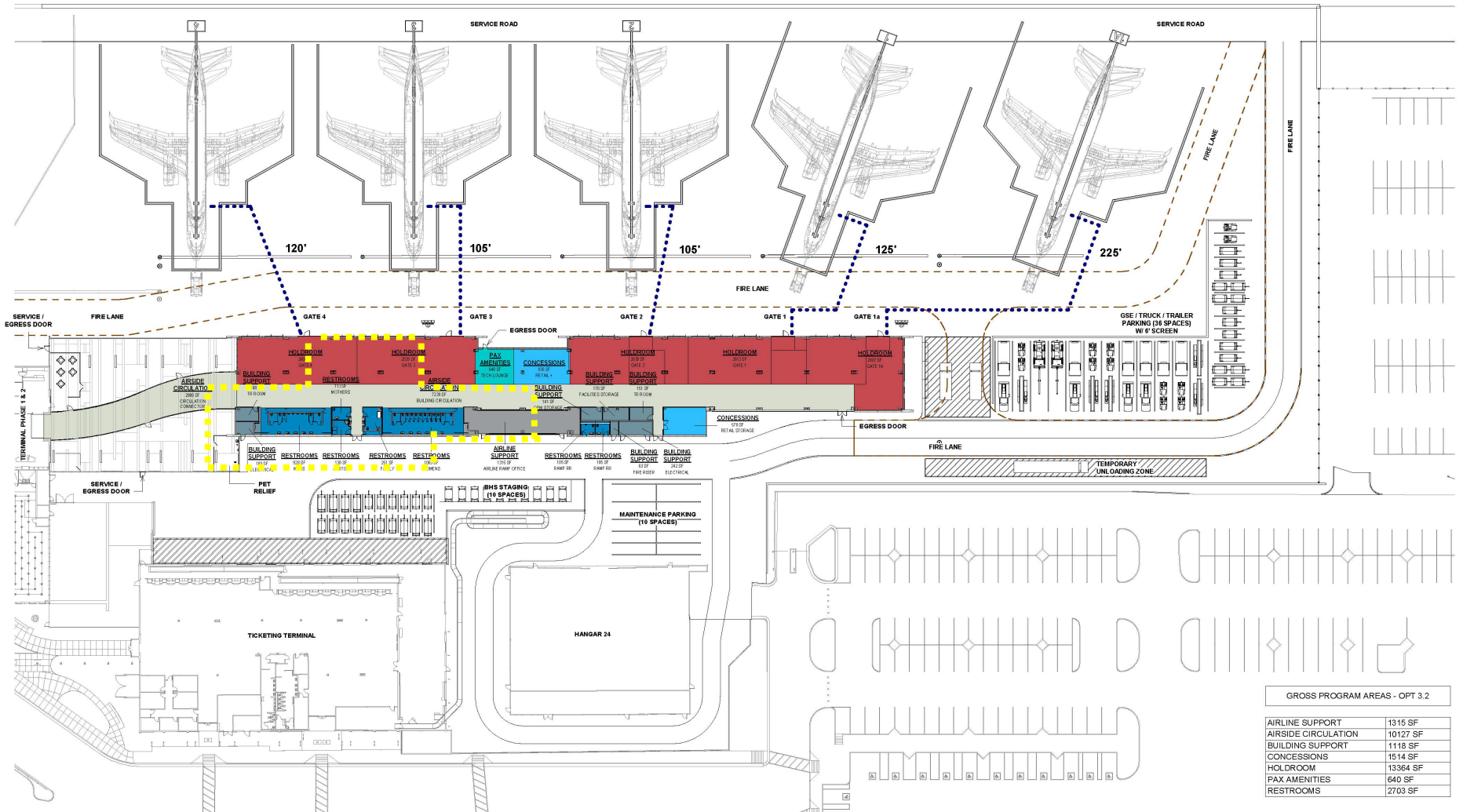


| Location | 2020 | | 2021 | |
|-----------------|-----------|------------|------------|------------|
| | Callers | Calls | Callers | Calls |
| Mesa | 41 | 211 | 40 | 269 |
| Gilbert | 27 | 81 | 62 | 154 |
| Gold Canyon | 5 | 48 | 2 | 7 |
| Queen Creek | 9 | 13 | 16 | 48 |
| Queen Valley | 1 | 20 | 1 | 10 |
| San Tan Valley | 1 | 1 | 1 | 1 |
| Apache Junction | 0 | 0 | 1 | 1 |
| Unknown | 0 | 0 | 1 | 1 |
| Tempe | 1 | 1 | 0 | 0 |
| Scottsdale | 2 | 2 | 0 | 0 |
| Fountain Hills | 0 | 0 | 1 | 1 |
| Chandler | 1 | 1 | 5 | 6 |
| TOTAL | 88 | 378 | 130 | 498 |

Terminal Food, Beverage & Retail Concessions Program



Terminal Modernization Project



BUILDING GROSS AREA: 27,893 SF
CONNECTOR GROSS AREA: 2,888 SF

TOTAL GROSS AREA: 30,781 SF

GROSS PROGRAM AREAS - OPT 3.2

| | |
|---------------------|----------|
| AIRLINE SUPPORT | 1315 SF |
| AIRSIDE CIRCULATION | 10127 SF |
| BUILDING SUPPORT | 1118 SF |
| CONCESSIONS | 1514 SF |
| HOLDROOM | 13364 SF |
| PAX AMENITIES | 640 SF |
| RESTROOMS | 2703 SF |

GRAPHIC SCALE



Terminal Modernization Project



Terminal Modernization Project



Terminal Modernization Project



Air Traffic Control Tower



SkyBridge Arizona



SkyBridge Arizona 53,000 SF Flex Industrial Building



SkyBridge Arizona 82,500 SF Hangar



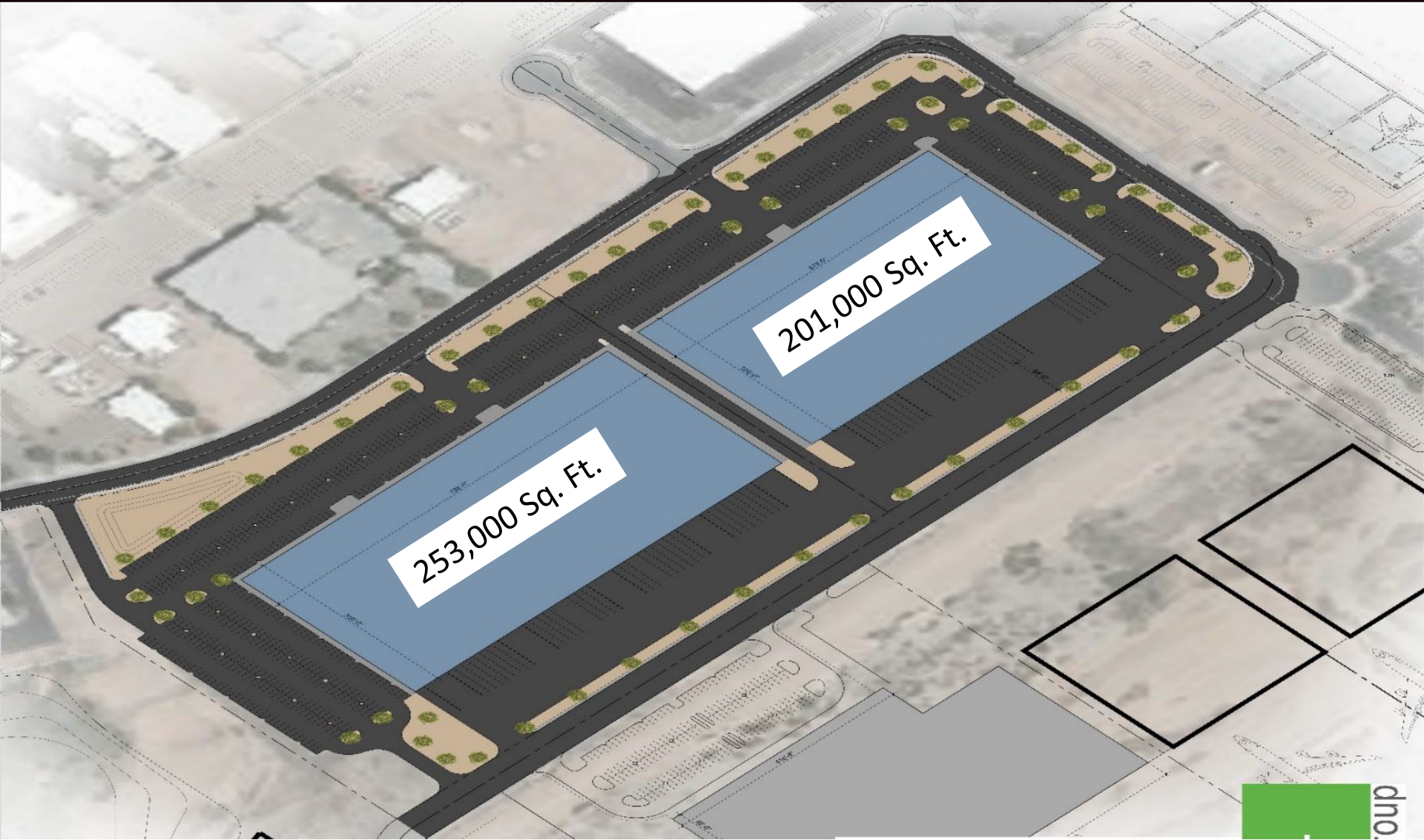
SkyBridge Arizona Hotel



Phoenix-Mesa
Gateway
Airport



SkyBridge Arizona Industrial Buildings



APS 65,000 SF Hangar/Corporate HQ



Gateway Executive Airpark's 183,000 SF Hangar Complex



5559 S. SOSSAMAN RD, MESA, ARIZONA 85212



Gateway Executive Airpark

Gateway Executive Airpark's 183,000 SF Hangar Complex



Gulfstream Aerospace Service Center



Wetta Ventures/Gulfstream 50,000 SF Hangar



Gateway*East* Development



Airport Construction Projects



- **Alpha Apron Aircraft Parking Phase III & IV**
- **Car Rental Return Lot Improvements**
- **Terminal Employee Parking Lot**
- **North Remain Overnight (RON) Parking Pad**
- **Installation of 6th TSA Security Screening Checkpoint Lane**
- **Car Care Facility Improvements**
- **Fuel Farm Storage Tank Expansion**
- **Center Runway Reconstruction**
- **Ray Road Economy Parking Lot Expansion**