

# QUEEN CREEK AND PINAL COUNTY SMALL AREA TRANSPORTATION STUDY

Meridian Road/Ray Road/Schnepf Road/Combs Road



**Mohamed Youssef, PE, PTOE**  
**Public Works Director**

# Presentation Overview



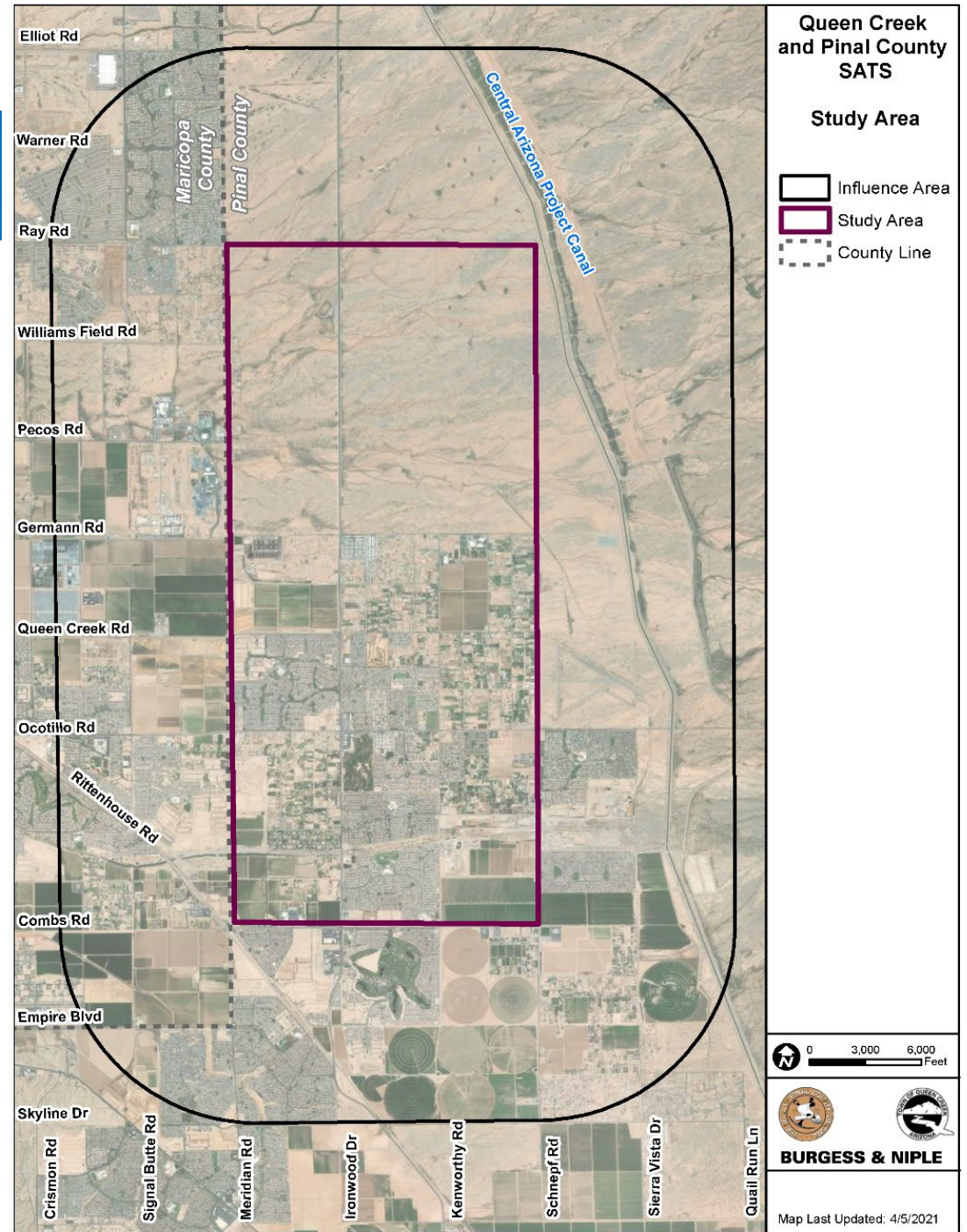
- ❖ Study area
- ❖ Existing and 2030 Population and Employment
- ❖ Existing and 2030 Traffic Volume and Level of Service
- ❖ Recommendations Overview
- ❖ Open Discussion





# STUDY AREA

- The **study area** consists of 21 square miles
- The **study influence area** includes a two-miles buffer surrounding the **study area**

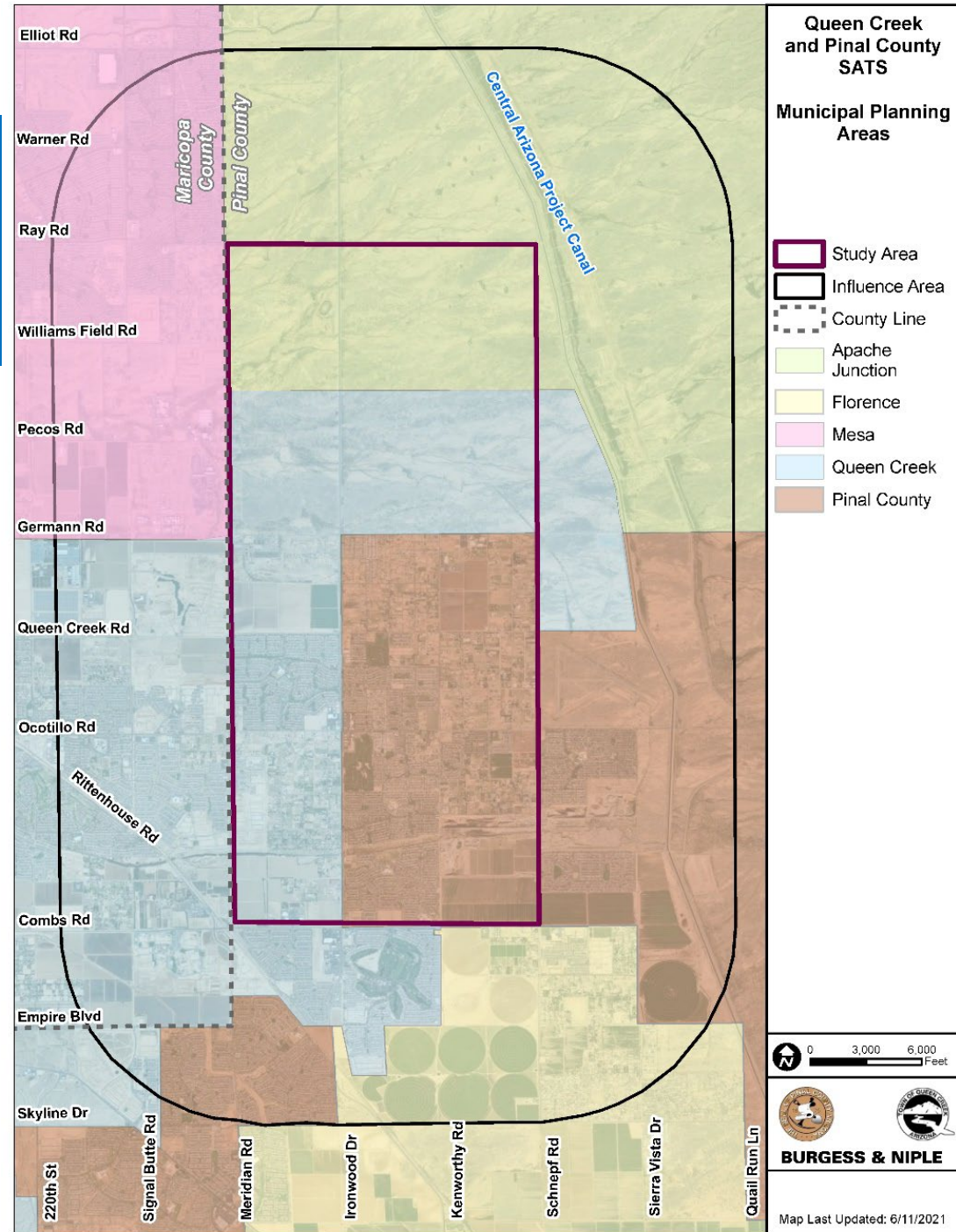






# MUNICIPAL PLANNING AREAS WITHIN THE INFLUENCE AREA

- ✓ City of Apache Junction
- ✓ Town of Florence
- ✓ City of Mesa
- ✓ Pinal County
- ✓ Town of Queen Creek

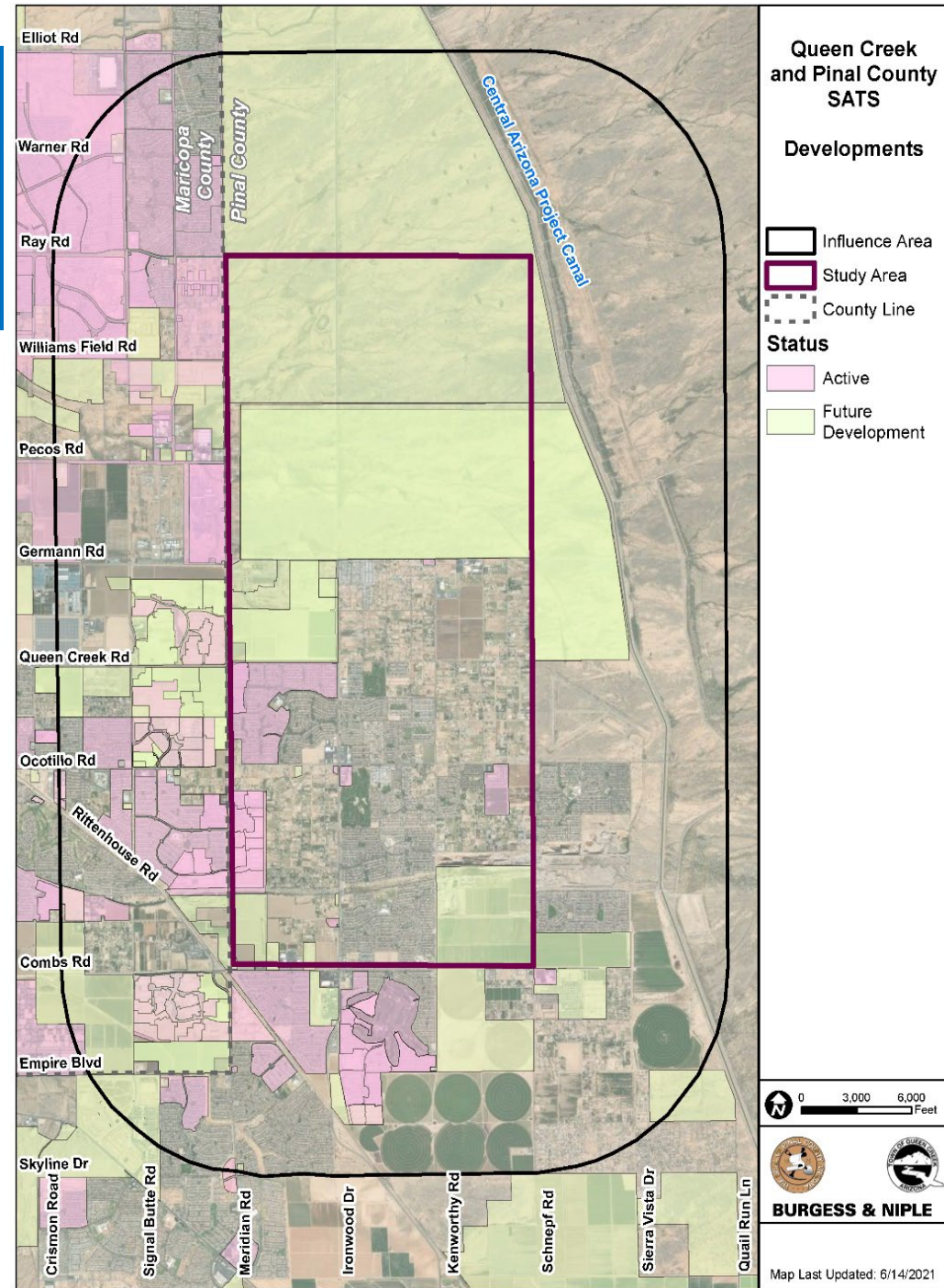




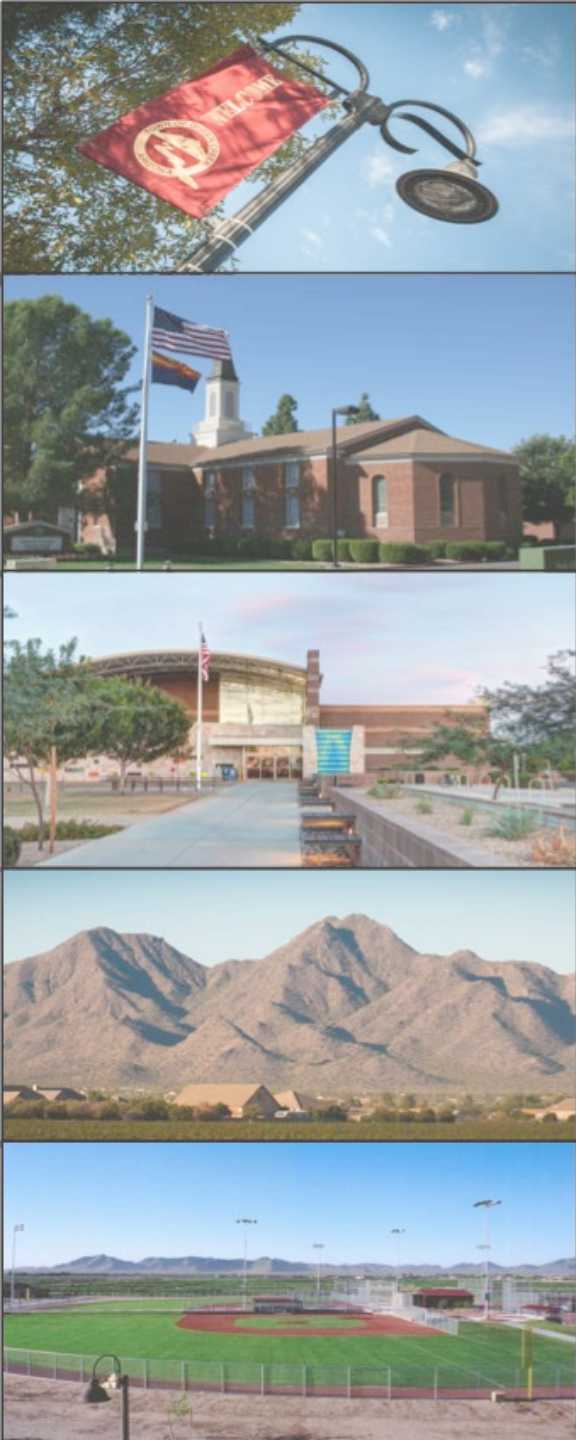


# MAJOR DEVELOPMENTS INCLUDE:

- Superstition Vistas
- Queen Creek ASLD Specific Plan

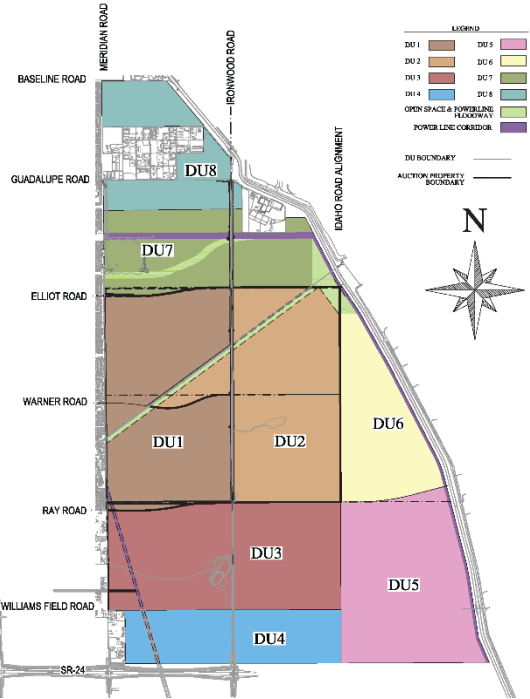






# SUPERSTITION VISTAS

- Phases 1 and 2 complete by 2030:
  - 11,000 HH
  - 230 jobs



# QUEEN CREEK ALSD

- Assumed complete by 2030:
  - 10,500 HH
  - 5,000 jobs

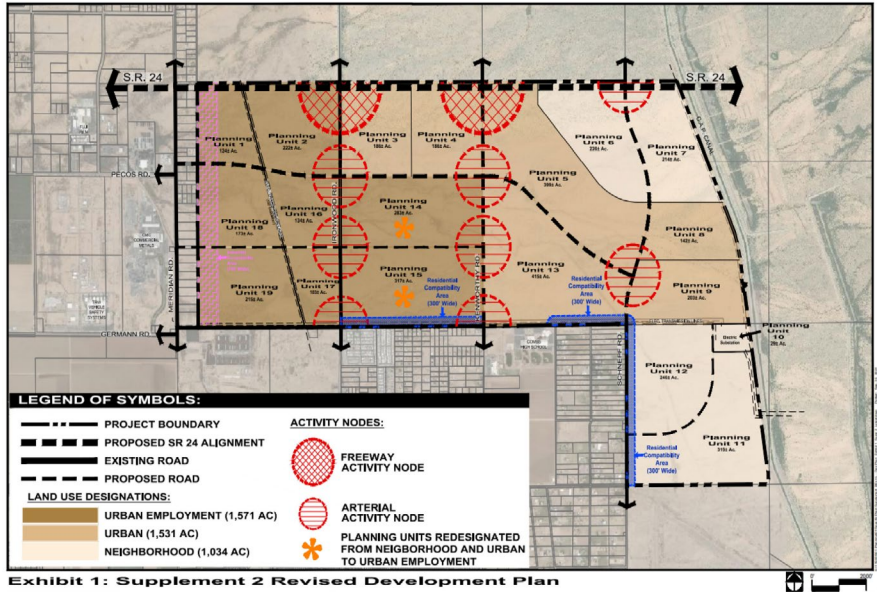
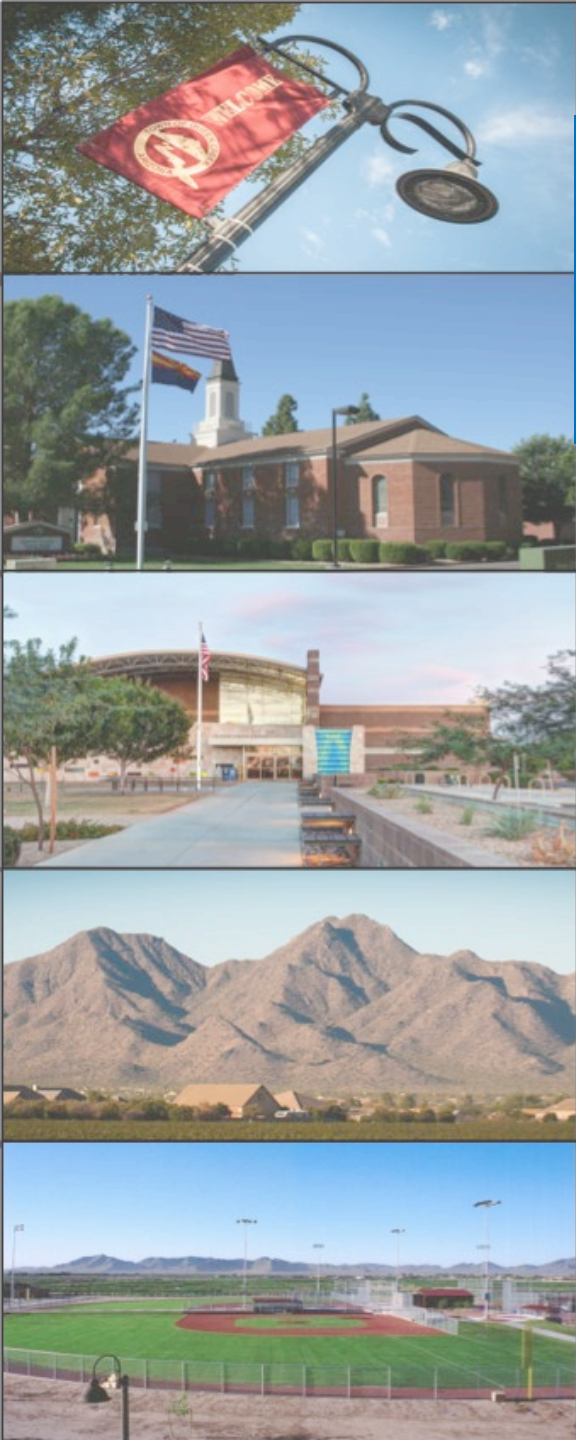


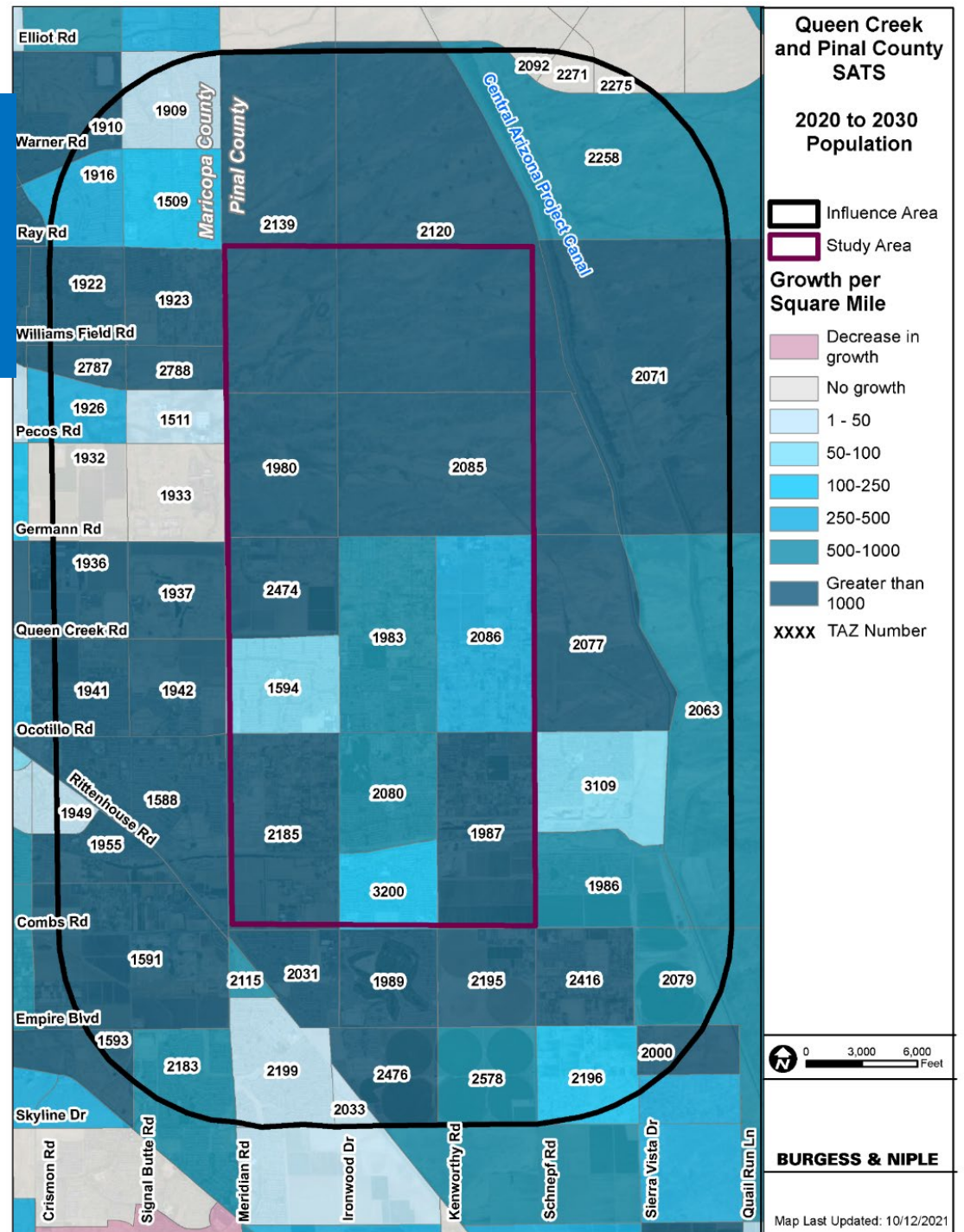
Exhibit 1: Supplement 2 Revised Development Plan



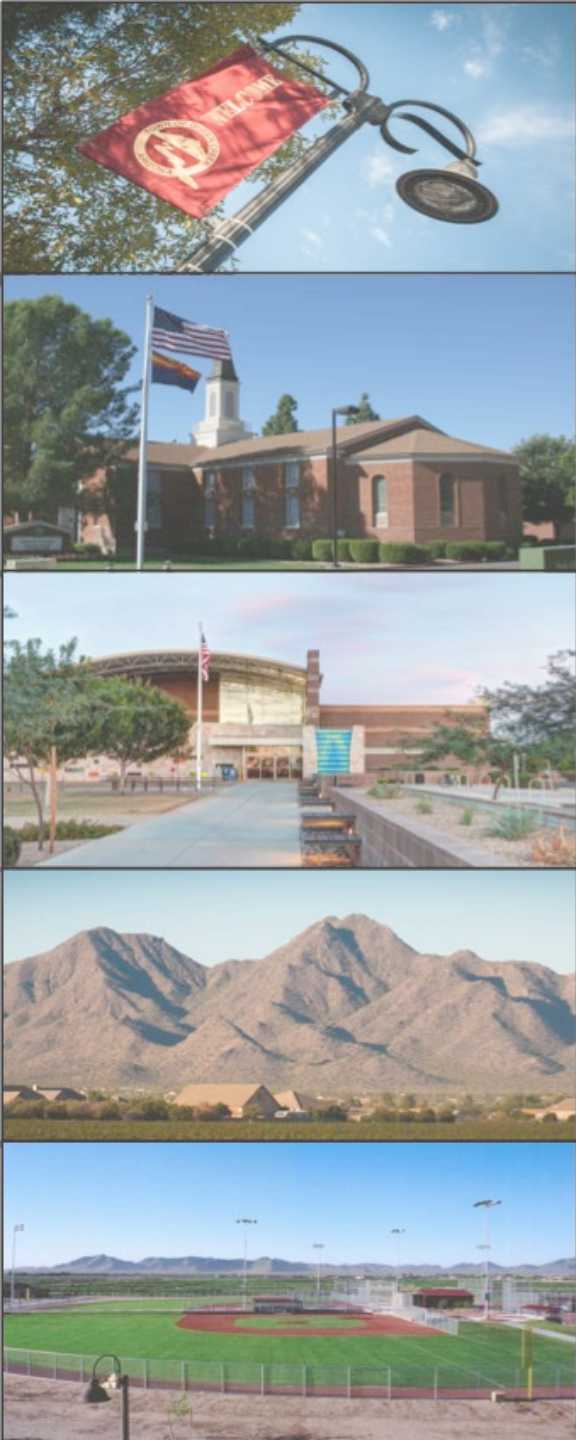


# PROJECTED 2020-2030 POPULATION GROWTH

- Study area
  - Additional 104,000 residents
  - Over 350% growth
- SIA+
  - Additional 96,000 residents
  - Over 130% growth

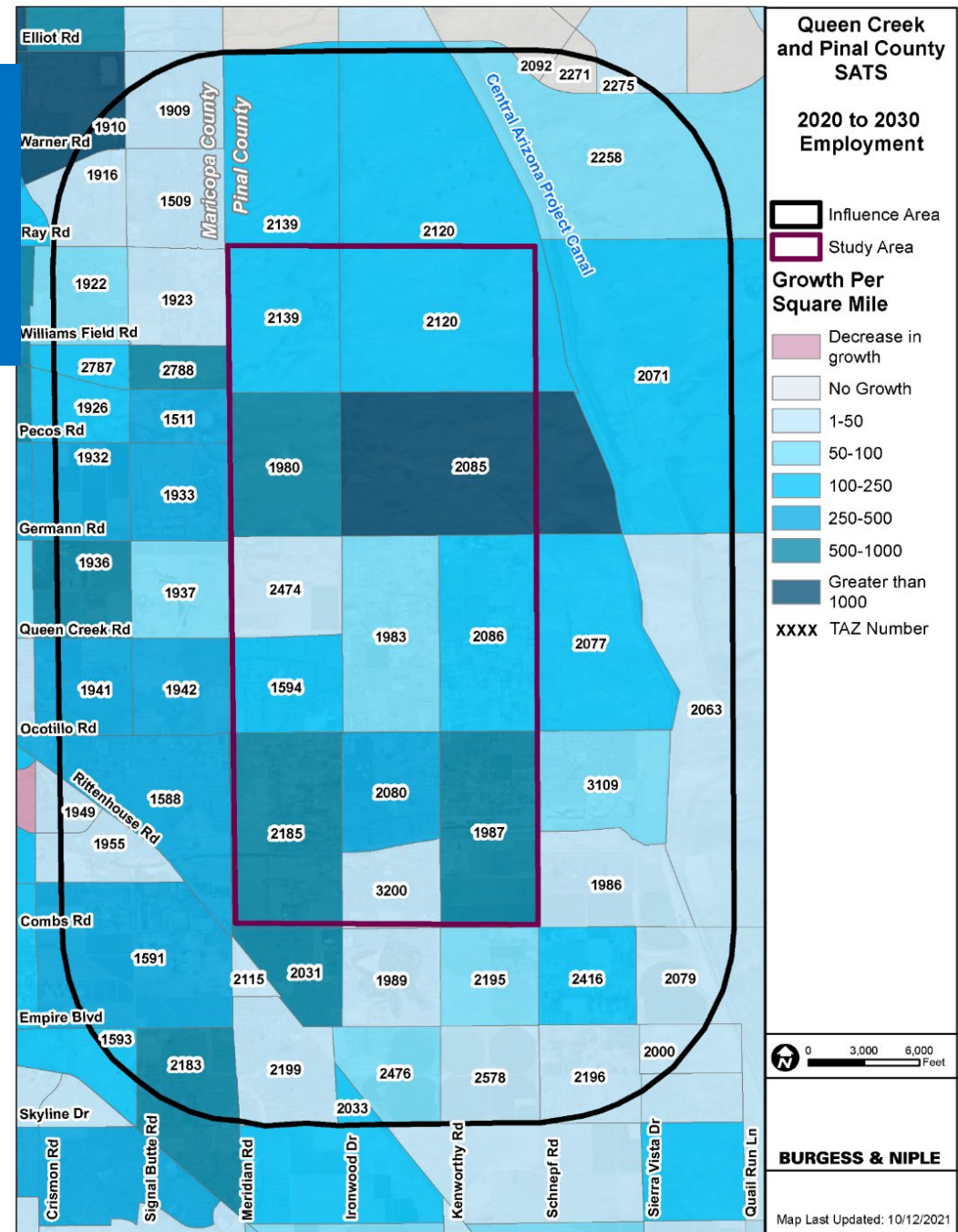






# PROJECTED 2020-2030 EMPLOYMENT GROWTH

- Study area
  - Additional 7,500 jobs
  - Over 500% growth
- SIA+
  - Additional 9,500 jobs
  - Over 150% growth



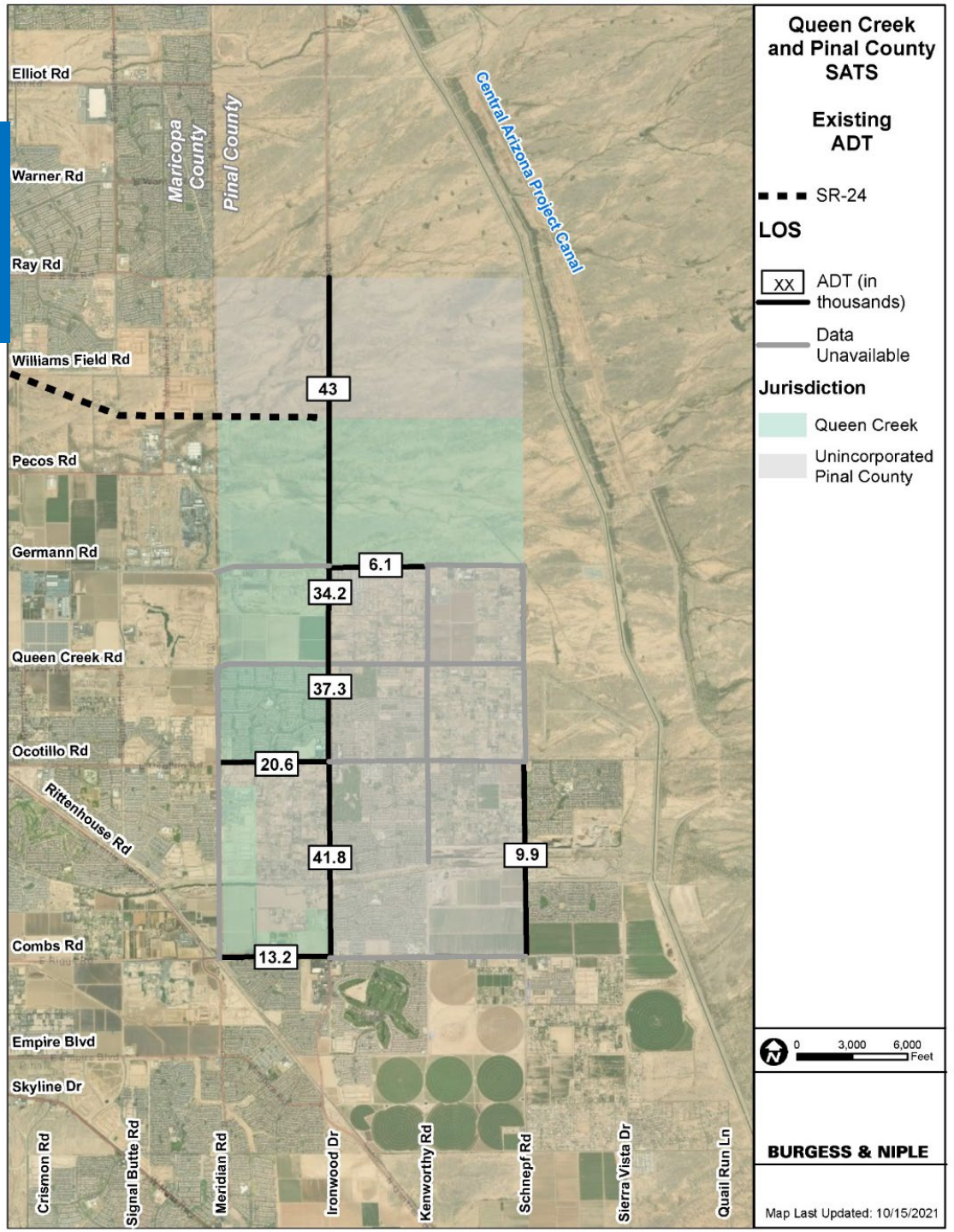




# 2019 TRAFFIC VOLUMES

## Ironwood Drive

34 to 43 thousand average daily trips





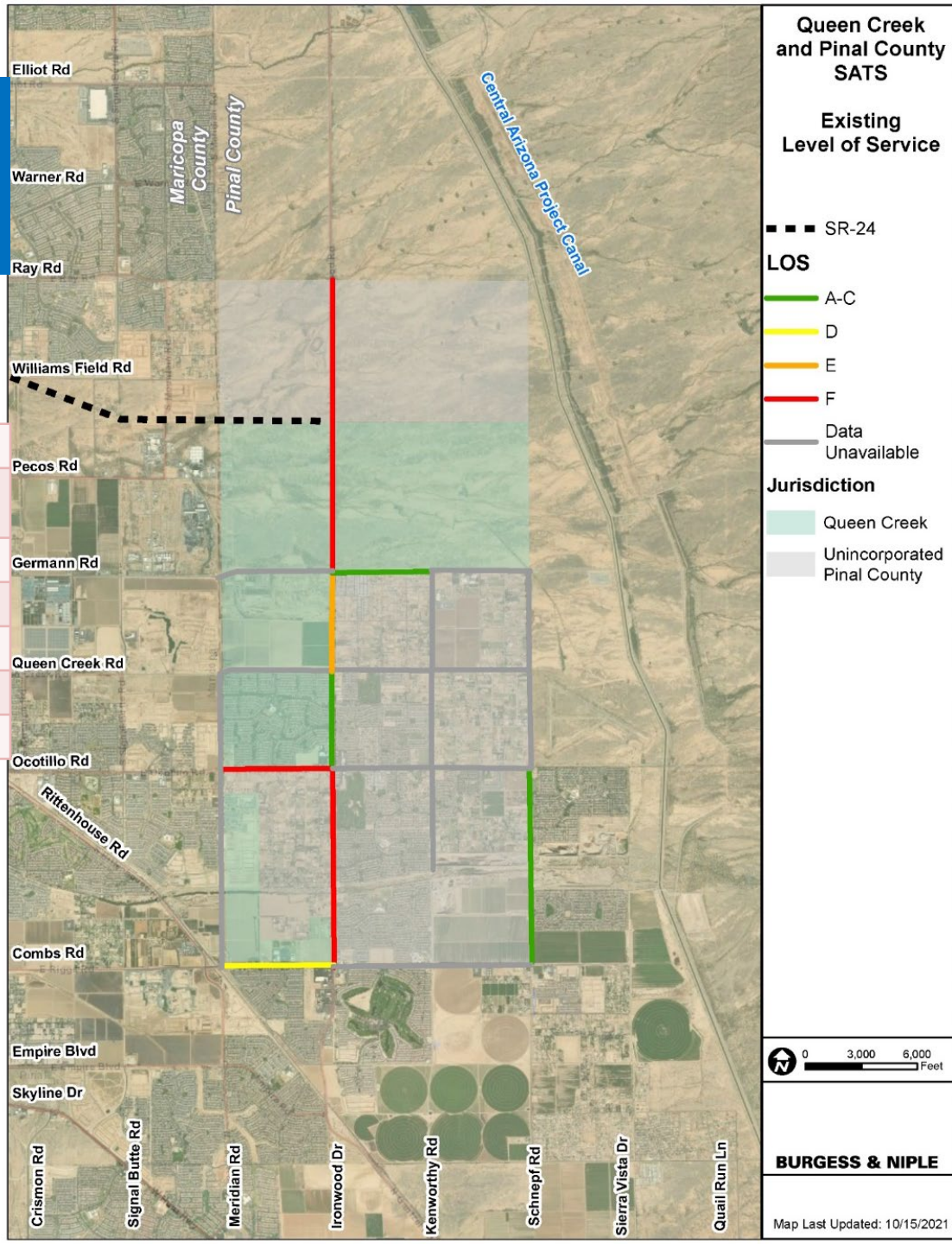


# EXISTING LEVEL OF SERVICE (LOS)

Arterial Daily Volumes at Capacity

Type of Roadway	Number of Lanes	Capacity (vehicles per day)
Arterial	2	16,500
Arterial (no median)	4	32,000
Arterial (with median)	4	35,500
Arterial (no median)	6	49,000
Arterial (with median)	6	54,000

Per the 2020 Queen Creek Transportation Master Plan - Street Element Update

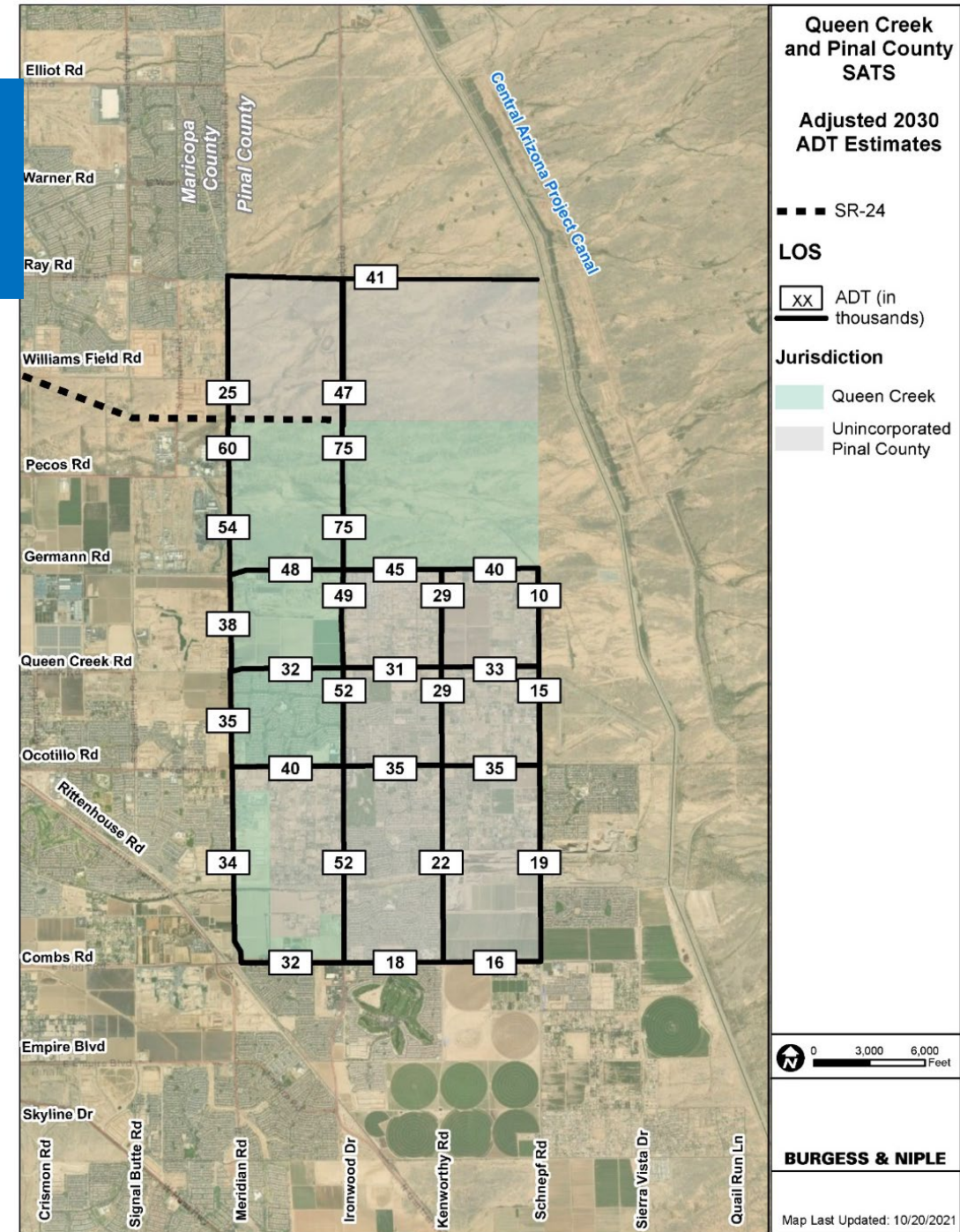






# 2030 ADT ESTIMATES

- Meridian Road and Ironwood Drive critical roadways to connect Queen Creek and Pinal County to SR 24
- ASLD and Superstition Vistas Developments create considerable East-West Traffic Volumes
- Traffic shifts from Rittenhouse to North-South Connectors to access SR 24 and the Valley Freeway System

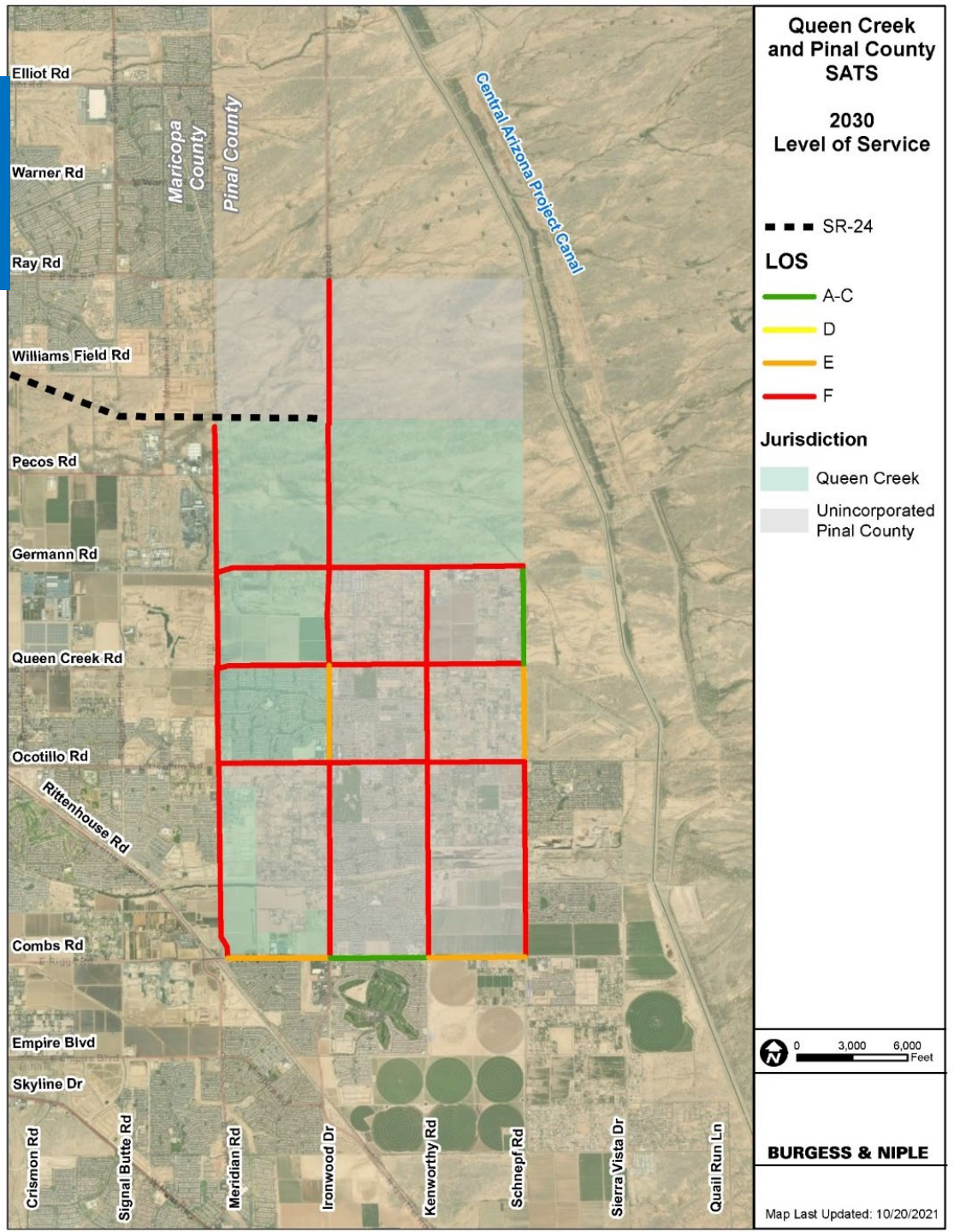




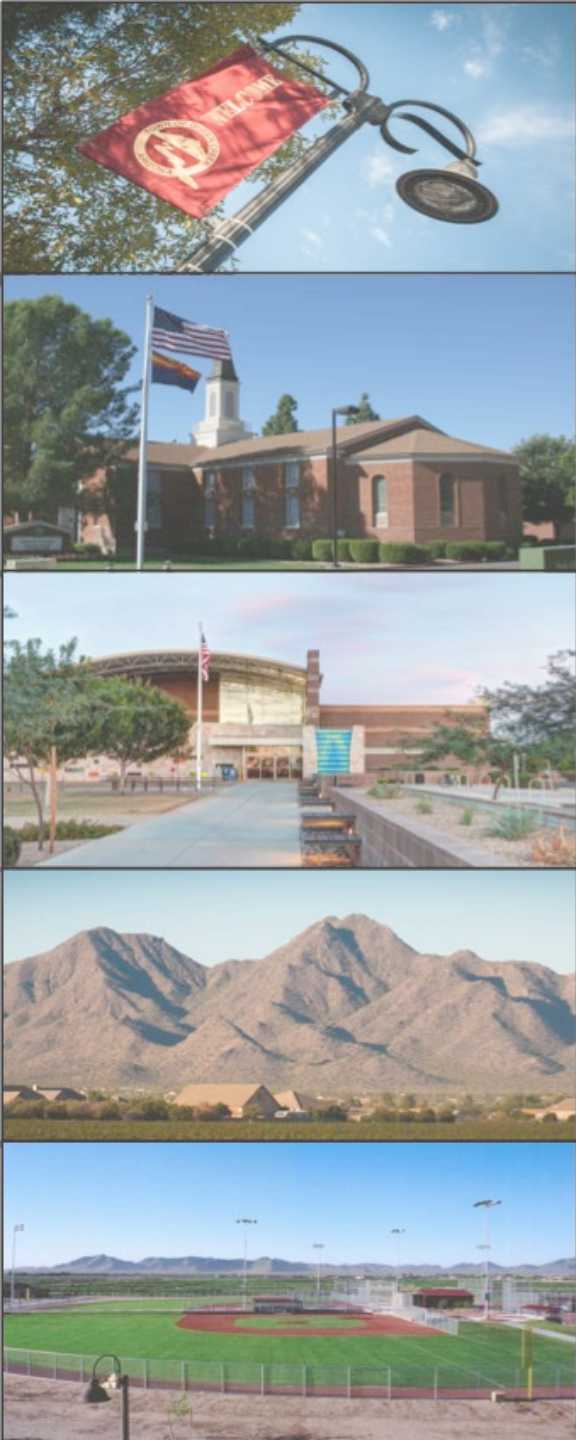


# 2030 LEVEL OF SERVICE

- Considers programmed improvements
- Demand in excess of programmed capacity
- Majority of segments expected to operate at LOS E or LOS F

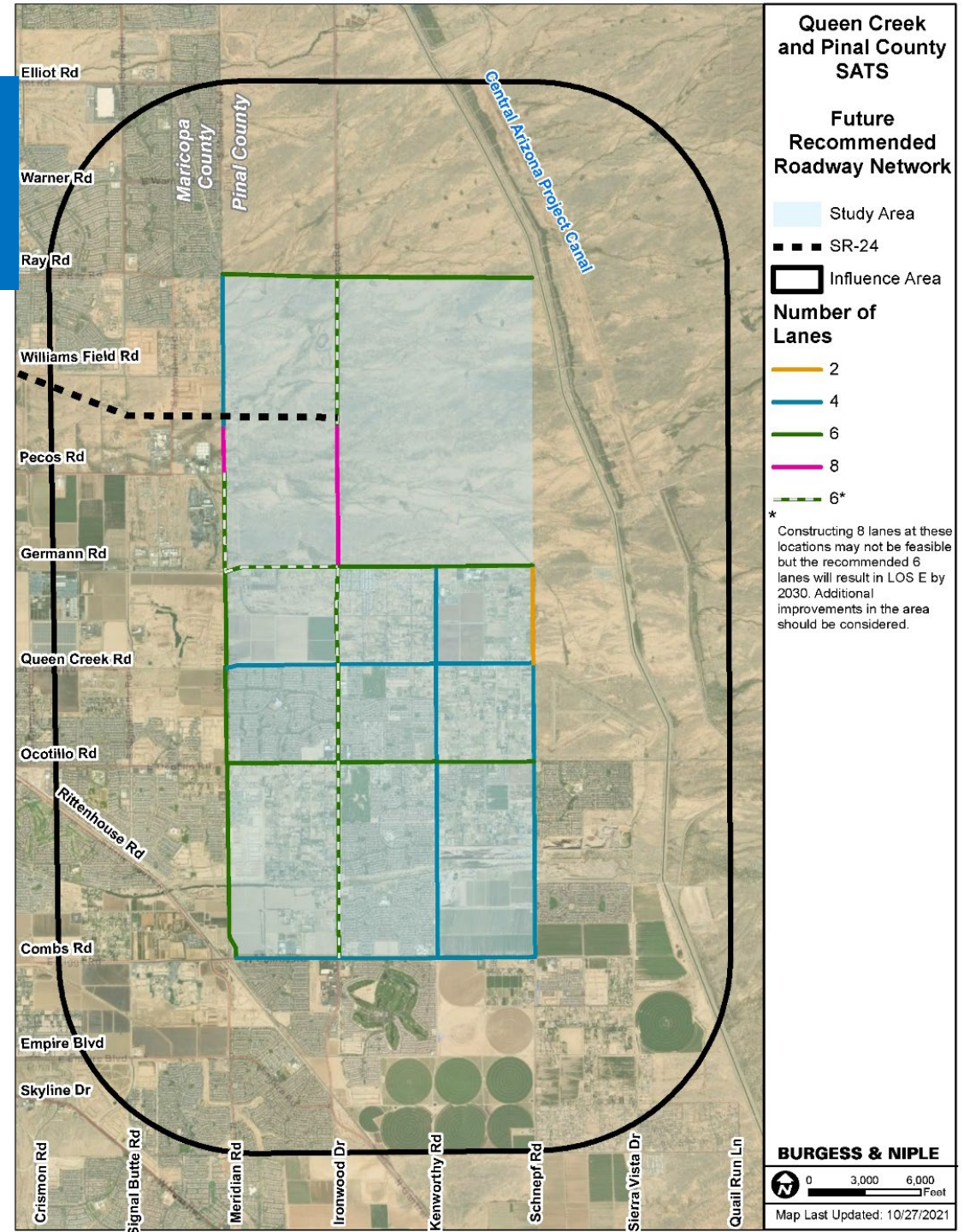






# RECOMMENDED NETWORK

- Builds much of the arterial roadway grid
- Predominately 4- and 6-lane roadways

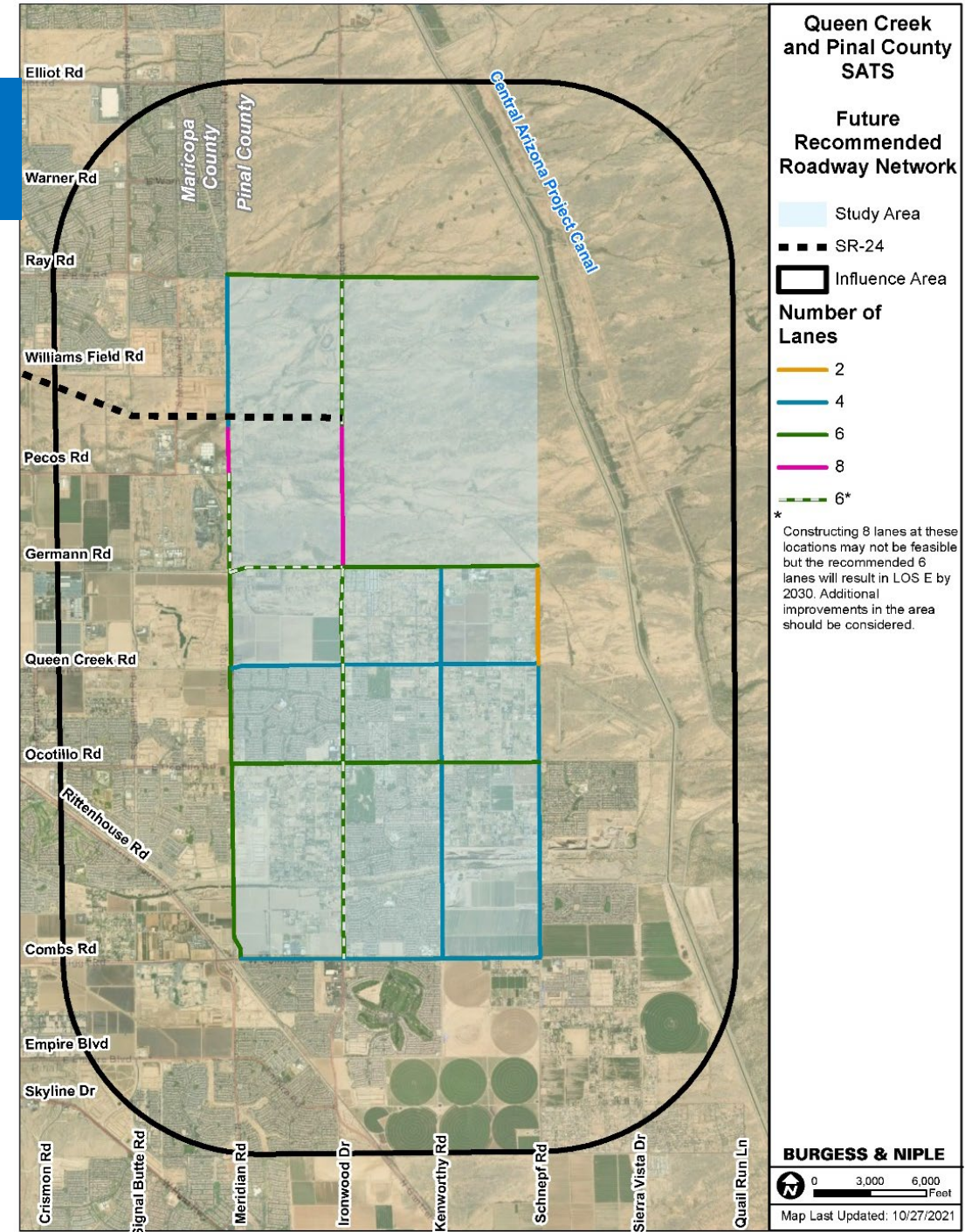






# CONSIDERATIONS

- SR 24 drives peak hour demand
- Eight-lane roadways were carefully considered
- East-west connectivity may be achieved through parallel routes





# Pinal County Proposal\*

\*This is a concept and would ultimately require ASLD approval as the land owner

