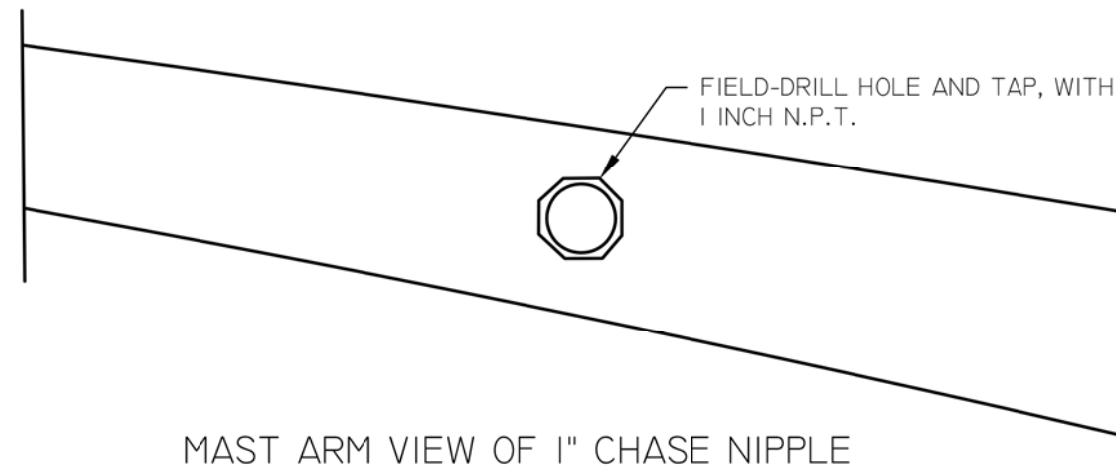


| BAND LENGTH | MAST ARM DIA. |
|-------------|---------------|
| 29" | 2" - 7" |
| 42" | 8" - 11" |
| 59" | 12" - 17" |

NOTES:

1. YELLOW ZINC DICHROMATE PLATED FASTENERS, STAINLESS STEEL HARDWARE REQUIRED.
2. AVAILABLE WITH CABLE STYLE CLAMP.
3. STAINLESS STEEL HARDWARE REQUIRED UNLESS STRUCTURAL STEEL NECESSARY AS REQUIRED BY MANUFACTURER.



GENERAL NOTES

A 1-1/8" HOLE SHALL BE DRILLED INTO THE SIDE OF THE MAST ARM AT THE APPROPRIATE LOCATION AND THEN TAPPED WITH A 1" PIPE TAP. MAST ARM STRUCTURAL INTEGRITY REQUIRES A STANDARD 1" CHASE NIPPLE SHALL BE INSTALLED IN THE OPENING.

A SKY BRACKET SB-59 TENON CLAMP SHALL BE INSTALLED OVER THE 1" CHASE NIPPLE. FOLLOW MANUFACTURER'S INSTALLATION INSTRUCTIONS.

THE SET SCREW SHALL BE SECURELY TIGHTENED AGAINST THE PIPE NIPPLE IN ACCORDANCE WITH MANUFACTURER REQUIREMENTS. ONCE THE SIGNAL HEAD IS INSTALLED THE 3/8" HOLE FOR THE SAFETY BOLT SHALL BE DRILLED AND THE SAFETY BOLT INSTALLED AND SECURED.

