



# Discussion on Possible Options for the Future Operations of Queen Creek Library

December 15, 2021

# Current Agreement with Maricopa County Library District (MCLD)

- Town provides and maintains the library facility, the Library District provides all operational services:
  - library programs, administration, staffing, equipment, books, computers and other materials.
- Expires June 30, 2022



# MCLD Municipal Partner Policy

- Support 100% of library operations for cities and towns with a population of 50,000 or less.
- Cities and towns over 50,000 are responsible for funding 100% of library operations plus 10% for overhead costs.
- Town population estimated at 68,500.
- Long range financial planning has included taking on these costs in FY2023 at approximately \$1.5m.



# Options for Library Services

- Option 1:  
Remain with MCLD under a revised IGA.
- Option 2:  
Transition to a Town of Queen Creek operated library.



# Option 1: Revised IGA with MCLD

- Continuity of services and access to MCLD's inventory and programs.
- Town responsible for 100% of operational costs plus 10% for overhead. Approximately \$1.8m for FY2023.
- Payments for Town residents who live in Pinal County no longer needed. \$50,254 for FY2020.
- Programming concerns regarding resident priority – MCLD committed to adding capacity to programs that fill quickly.





# Option 2: Transition to Independent Queen Creek Library

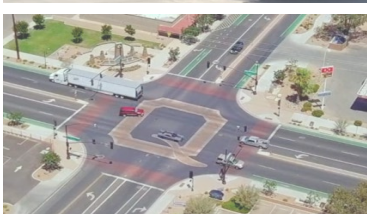
- Phase 1
  - IGA with MCLD for 18 months – two years.
  - Potential capital costs.
  - Hire Library Manager to develop start-up plan, establish policies and procedures, purchasing contracts, develop online services and hire library staff.
  - Hire support staff needed in other Town departments.
- Phase 2
  - Town assumes library operations.



# Option 2 Continued



- Town would have full control over library programs, and could implement a residency priority policy.
- Inconvenience to residents to recreate accounts.
- Difficult to match MCLD level of service.
- Interlibrary loan programs available to access materials, but may take 2-3 weeks longer.
- Impacts to other Town departments for support – IT, Procurement, Finance, Human Resources, Marketing, Communications, and Recreation.
- Analysis of other independent libraries in the region indicate a 20%-30% increase in operations costs.



Questions?