



Germann/Sossaman/UPRR

Possible IGA between the
Town of Queen Creek
City of Mesa
And
Maricopa County

Troy White, Public Works Director

Council 11.17.21

Germann/Sossaman/UPRR – Project Background

- 2013 – Arizona Department of Transportation - Corridor Improvement Study for Germann Road from Sossaman to Ironwood Roads.
- 2015 - Queen Creek - Alignment study for the Sossaman and Germann Intersection called out in the 2013 study.
- June 2019 – Queen Creek – Performed interim pavement improvements to the Germann and Sossaman Intersection.
- December 2019 – Queen Creek Council approves annexation of Germann Road (except 750 west of Sossaman)
- May 2021 – Queen Creek Council directed staff to work with Maricopa County and the City of Mesa for an IGA to begin formal design of the Germann and Sossaman Intersection.



Germann/Sossaman/UPRR – Direction Sought

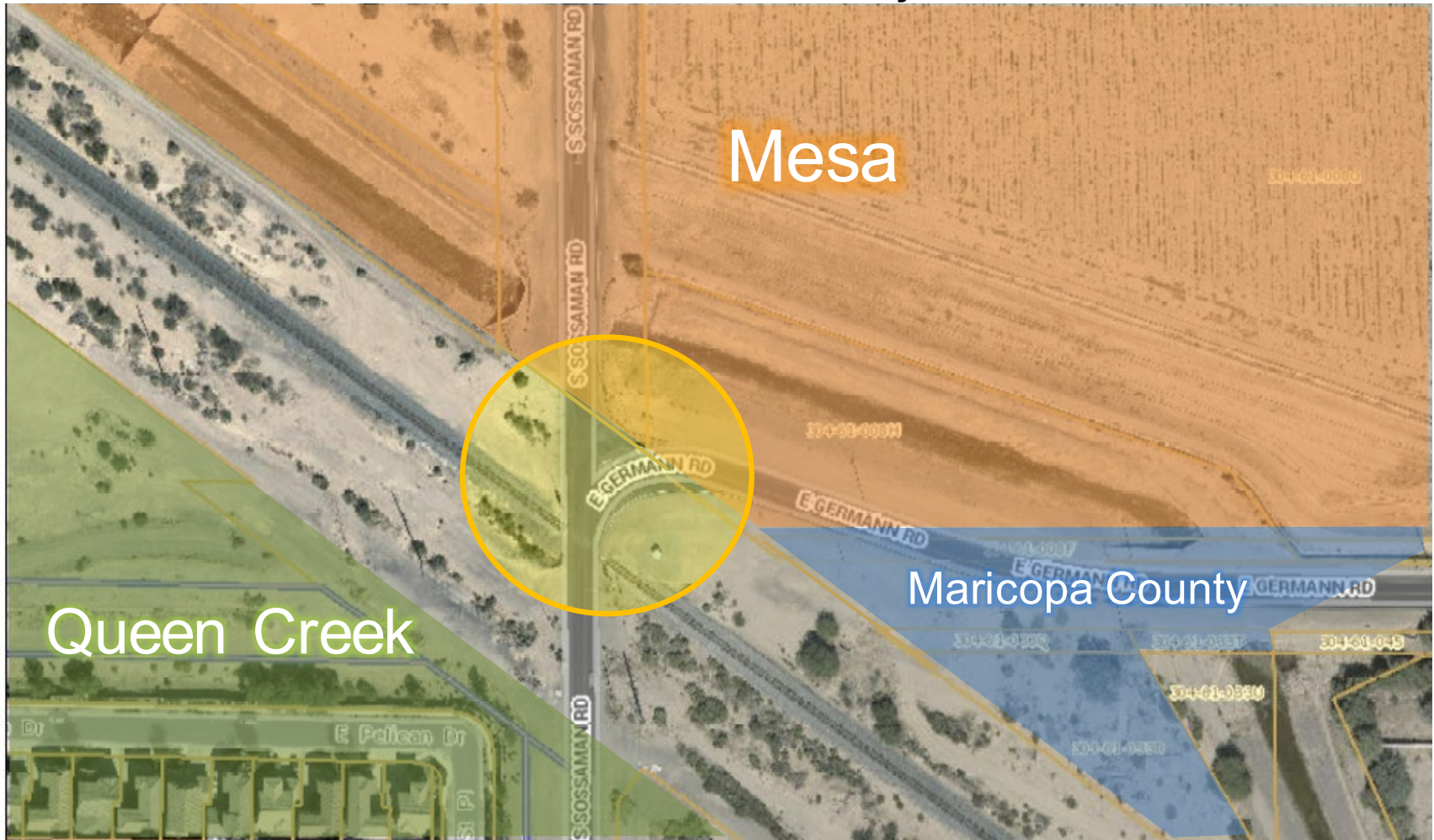
- Consideration and approval of an Intergovernmental Agreement with Maricopa County and the City of Mesa estimated at \$1.5 million for the design of the Sossaman and Germann intersection.
 - Town of Queen Creek as lead agency
 - Three-way split up to \$1.5 million (\$500K each agency). Town of Queen Creek and the City of Mesa split any costs over \$1.5 million 50/50.
 - Town to annex remaining section of Germann Road at the Sossaman intersection.
 - Queen Creek to maintain and operate intersection after construction.



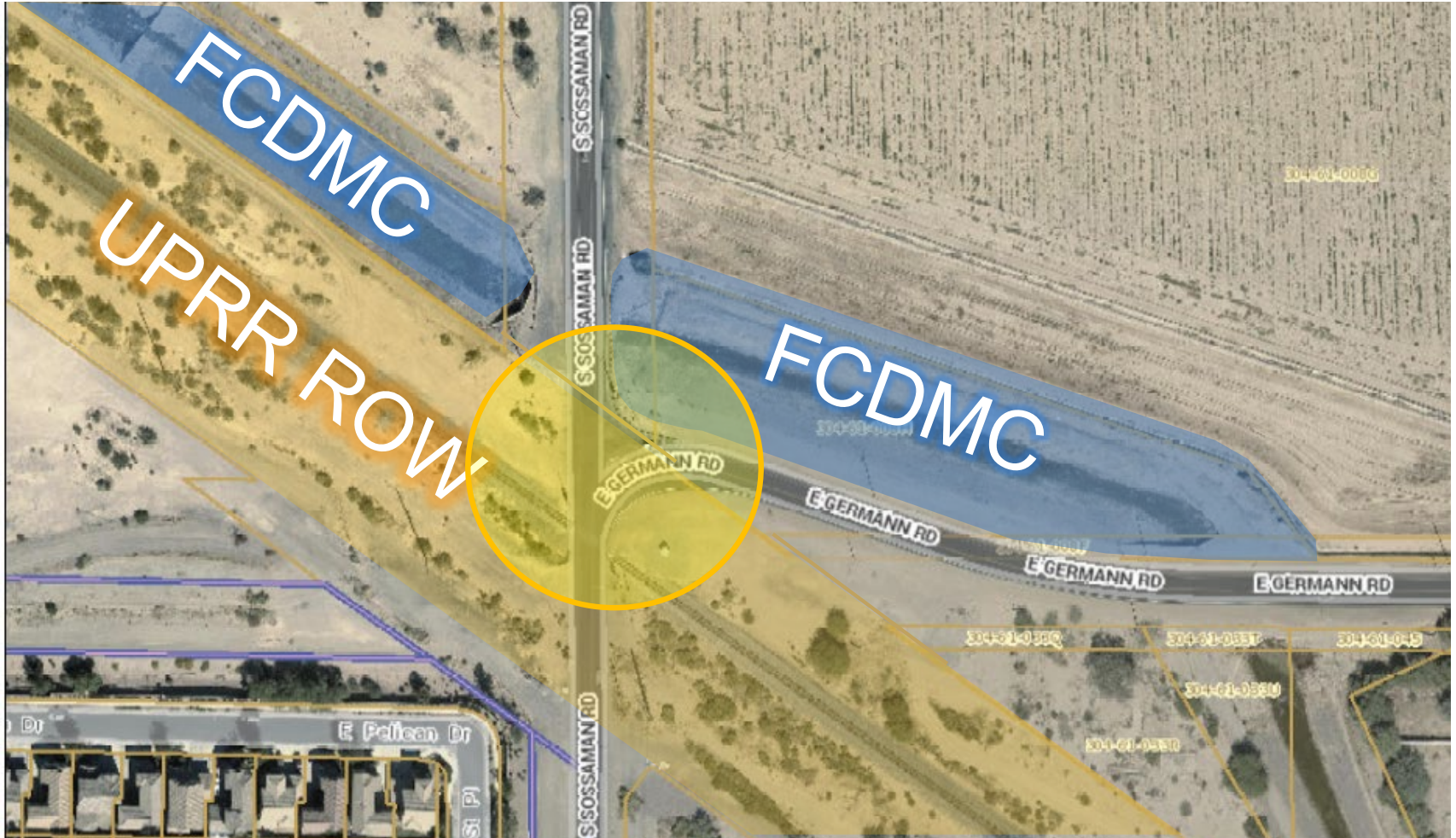
Germann/Sossaman/UPRR – Site Map



Germann/Sossaman/UPRR – Project Jurisdictions



Germann/Sossaman/UPRR – Project Jurisdictions

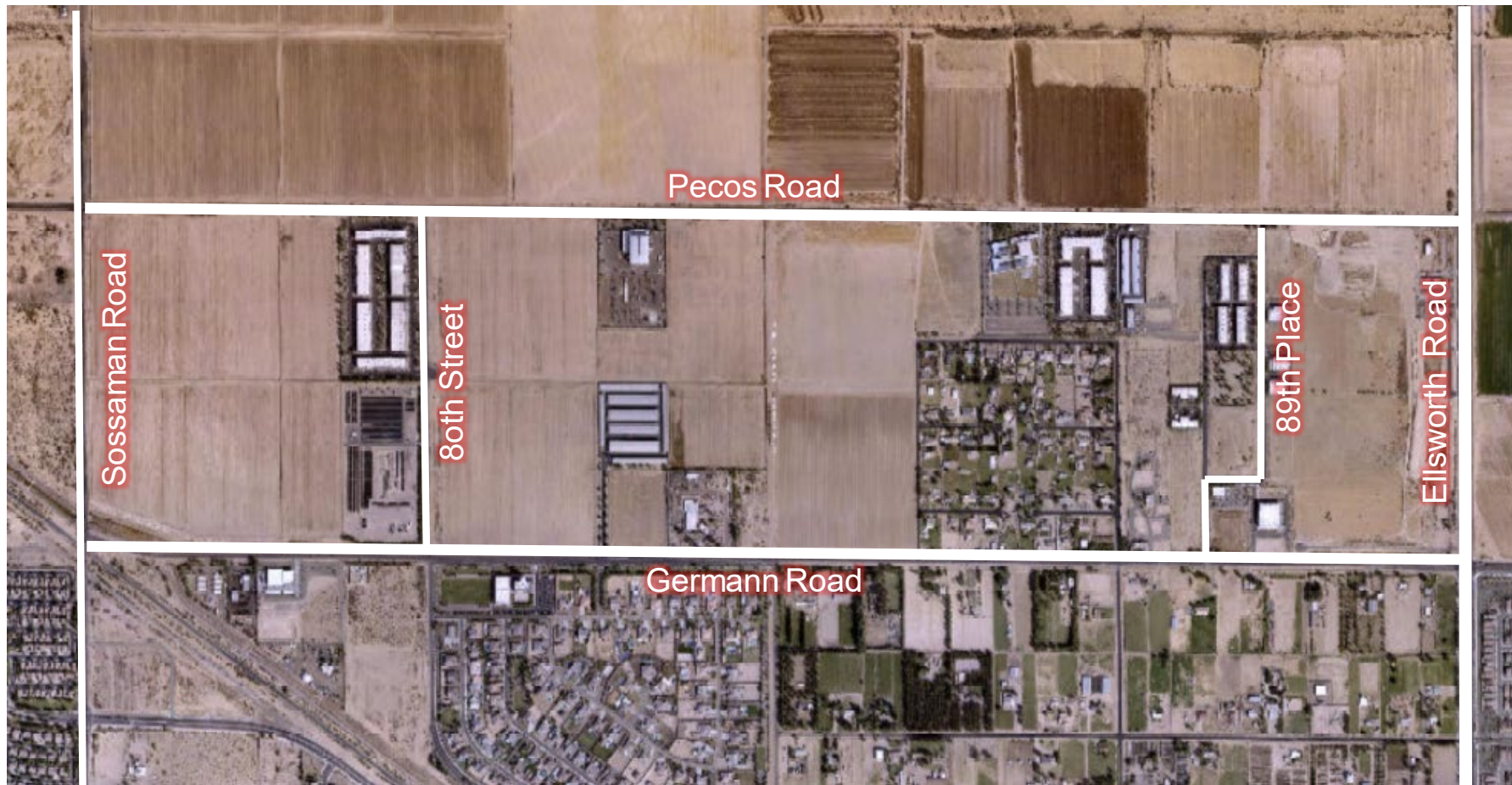


Germann/Sossaman/UPRR – Project Need

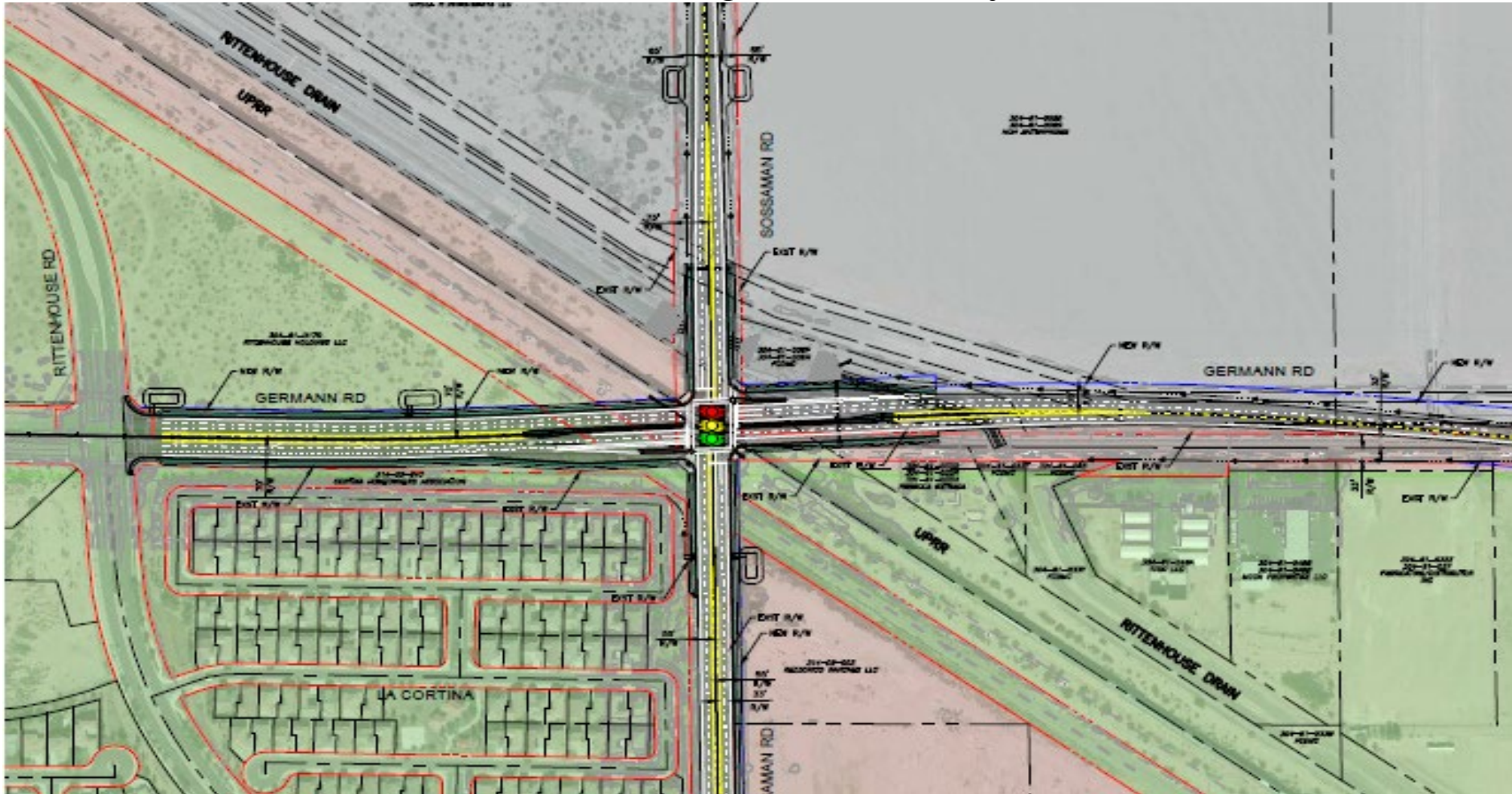


- Germann/Sossaman Intersection not designed for current capacity
- Interim improvements very limited
- Area Growth/Neighborhood Impacts
 - Schools and Commercial in Mesa
- Sossaman Road – Southeast Valley major route to Phoenix Mesa Gateway Airport
- Limited north/south options east of Ellsworth Road

Germann/Sossaman/UPRR – Project Need



Germann/Sossaman/UPRR – Alignment Study – Preferred Alternative



Germann/Sossaman/UPRR – Project Schedule



- Nov 17 2021 – Council Approval of IGA
- Feb 2022 – Council Approval of Design Firm
 - Required selection process
- March 2022 – Design begins
- June 2023 – September 2023 Arizona Corporation Commission Approval

Germann/Sossaman/UPRR – Interim Improvement Challenges



- Multi-Jurisdictional
 - Maricopa County, Mesa, UPRR, Flood Control District, TOQC
- Right-of-way constraints
- Union Pacific Railroad limitations on improvements



Staff Recommendation

- Approval of the Intergovernmental Agreement with Maricopa County and the City of Mesa estimated at \$1.5 million for the design of the Sossaman and Germann intersection.



Possible Interim Solution



Will Require

- Mesa Concurrence
- SRP Easement
- Land Purchase
- Time