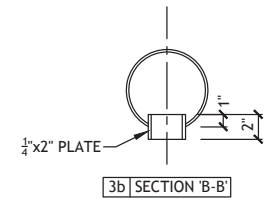
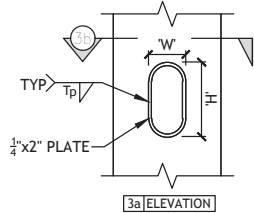


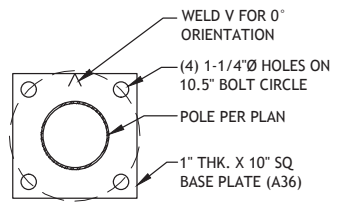
HAND HOLE SIZE		
LABEL	W	H
3"x5"	3"	5"

ALL PORTS (HAND HOLES) SHALL HAVE A COVER

T<sub>p</sub> = THICKNESS OF POLE

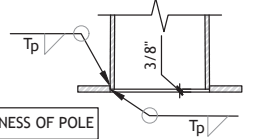


**3 - HAND HOLE**



BASE PLATE SHALL BE POWDER COATED.

**4 - BASE PLATE**



T<sub>p</sub> = THICKNESS OF POLE

**5 - POLE TO BASE PLATE WELD**

**GENERAL NOTES:**

1. ALL STEEL SHALL MEET THE REQUIREMENTS OF THE "STANDARD SPECIFICATIONS FOR STRUCTURAL STEEL" ASTM A36, UNLESS OTHERWISE NOTED ON THE STRUCTURAL PLANS OR BELOW.
2. ALL ROUND STEEL PIPE SHALL MEET THE REQUIREMENTS OF API-5LX GR.42.
3. ALL WELDED CONNECTIONS SHALL CONFORM TO THE LATEST VERSION OF THE AMERICAN WELDING SOCIETY AWS D1.1 CODE (LATEST EDITION). ALL WELD ELECTRODES OR WIRE SHALL AT A MINIMUM CONFORM TO E70 ELECTRODES (70 KSI YIELD).
4. ALL ANCHOR BOLTS SHALL BE HOT-DIPPED GALVANIZED (HDG) IN ACCORDANCE WITH THE ASTM A153 STANDARD.
5. THE HANDHOLE CONSISTS OF A 3" X 5" OVAL REINFORCED FRAME WITH 16 GAUGE COVER, STEEL ATTACHMENT BAR, AND 1/4" SCREW. A GROUNDING LUG IS INSTALLED INSIDE THE POLE SHAFT OPPOSITE THE HANDHOLE OPENING. THE HANDHOLE IS WELDED IN THE POLE SHAFT AND LOCATED AT 12" ABOVE THE BASE.
6. AFTER FABRICATION, THE POLE IS SAND BLASTED TO A NEAR WHITE FINISH, AFTER SANDBLASTING, THE POLE SHALL BE POWDER COATED. APPLY POLYESTER POWDER ELECTROSTATICALLY AND CURED TO A MINIMUM 2.5 MIL. THICKNESS



**TOWN OF QUEEN CREEK  
STANDARD DETAIL**

**COLLECTOR/RESIDENTIAL  
STREET LIGHT POLE**

**LT-5**