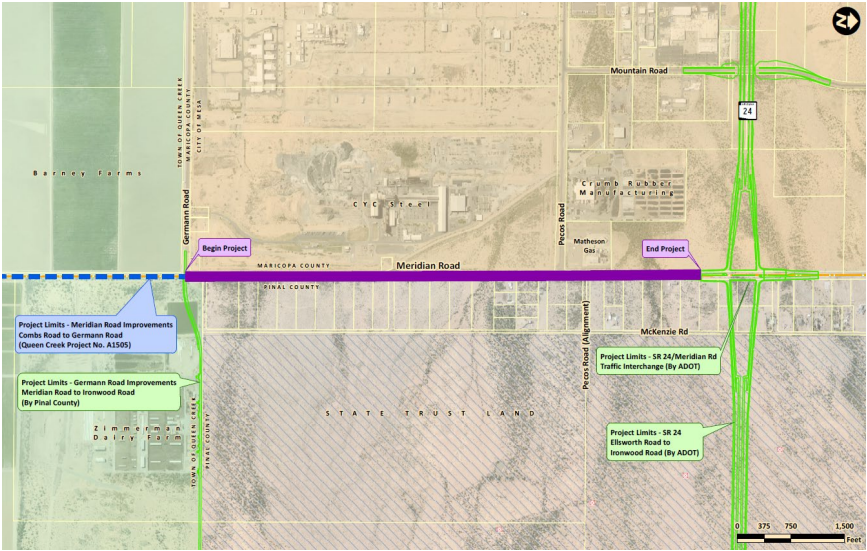
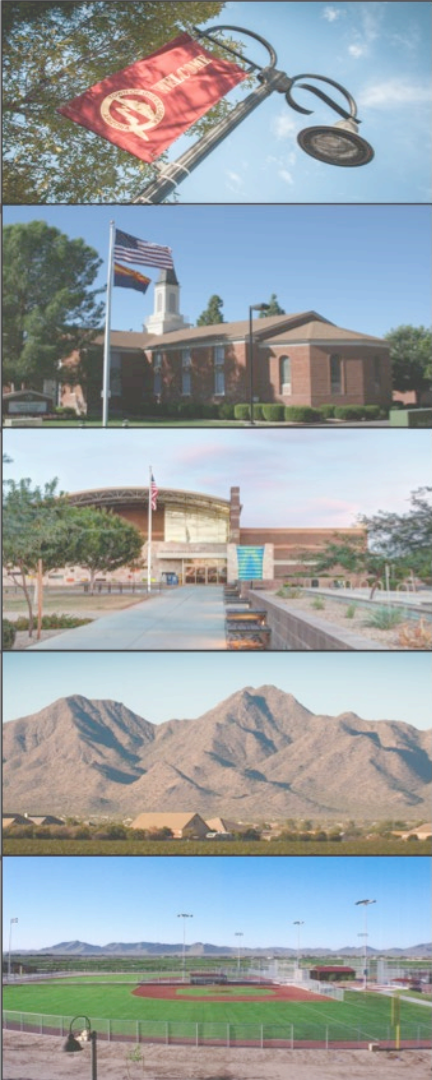


# TOWN OF QUEEN CREEK

## Transportation Improvement Program Update



Troy White, Public Works Director

Town Council 7.21.21

# Transportation Improvement Program: Update



- ❖ Phasing of the 10 –Year Transportation Program (4)
- ❖ Meet the team
- ❖ Challenges
- ❖ Projects next in the Queue
- ❖ Scorecard- Projects completed since 2017
- ❖ Questions/Comments

# Transportation Improvement Program: Meet the Team



Brad Novacek  
CIP Manager



Charlene Montgomery  
Sr. Project Manager



Tom Glow  
Project Manager



Bob Coulthard  
Project Manager



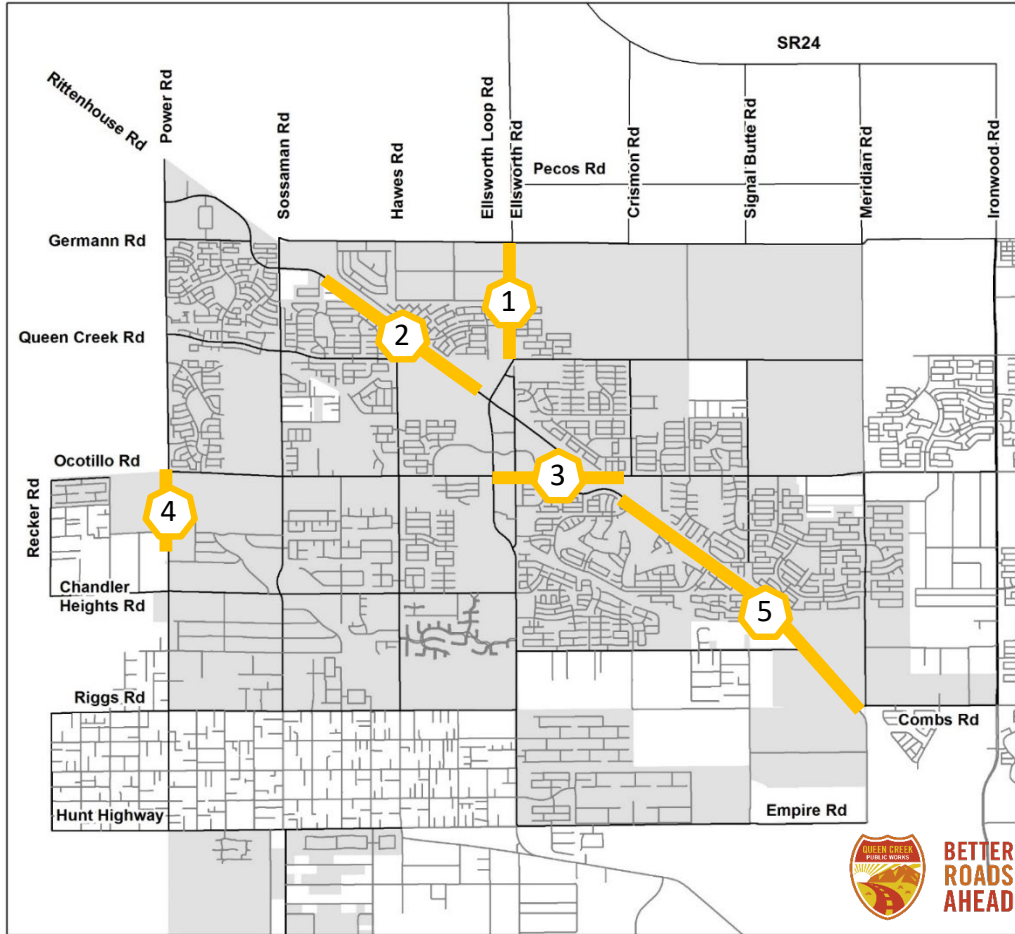
Andrea Hamilton  
Asst. Project Manager



Reed Caldwell  
Project Manager

# Transportation Improvement Program: Phase I - Principal Roadways

COMPLETED

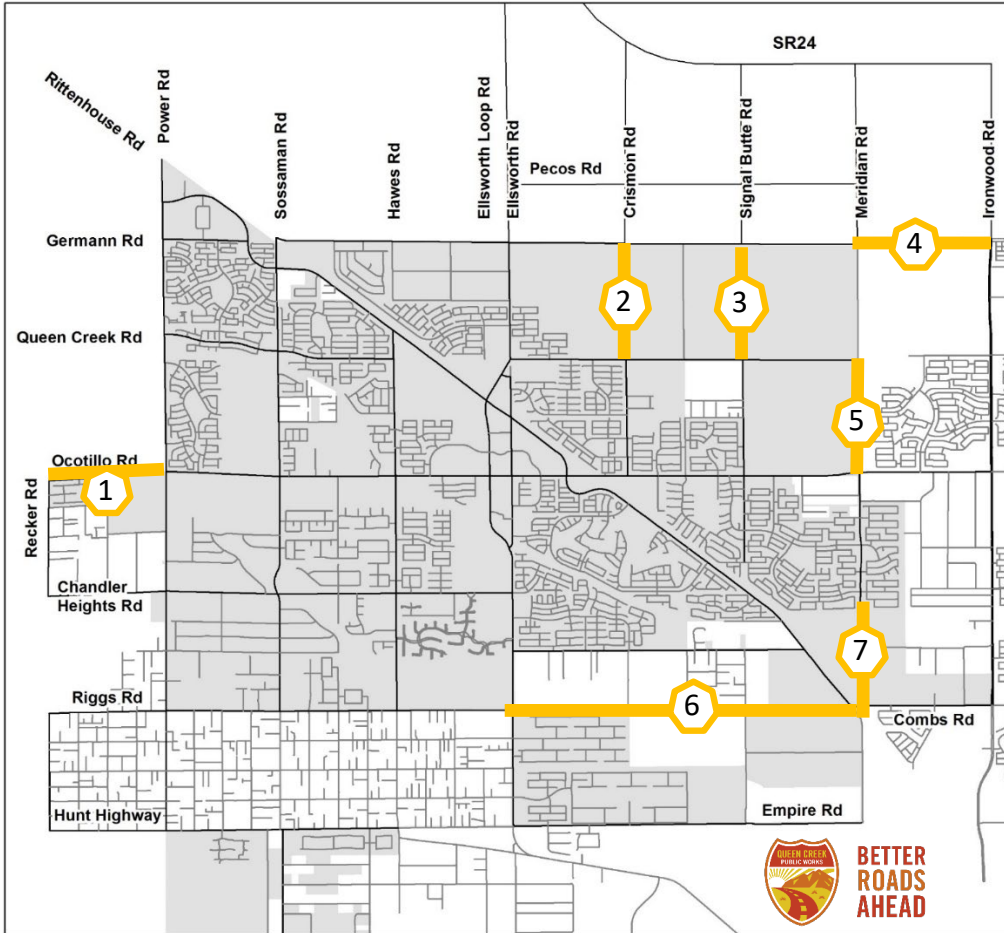


1. Ellsworth Road – Queen Creek to Germann
2. Rittenhouse Road – Market to Sossaman
3. Ocotillo Road – Ellsworth Loop to Crismon
4. Power Road – Ocotillo to Brooks Farm
5. Rittenhouse Road – Ocotillo to Riggs



# Transportation Improvement Program: Phase 2 - New Circulation Roadways

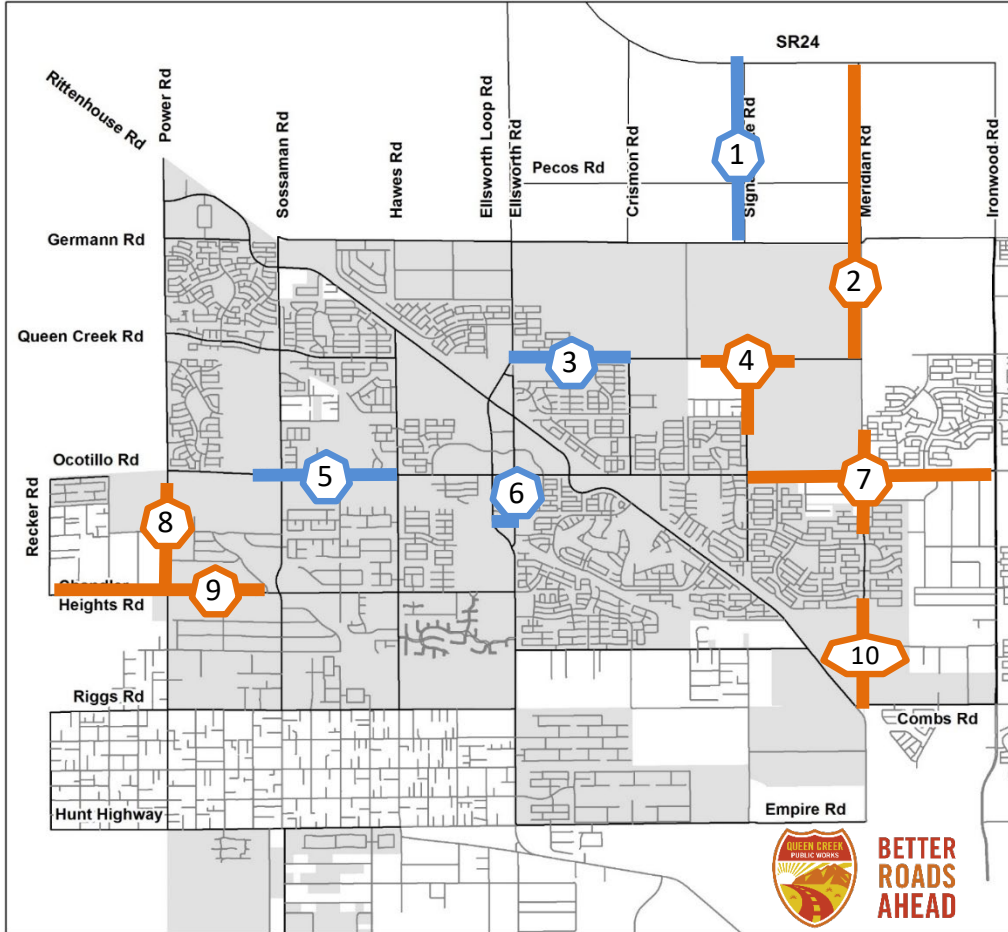
COMPLETED



1. Ocotillo Road – Power to Recker
2. Crismon Road – Queen Creek to Germann
3. Signal Butte – Queen Creek to Germann
4. Germann Road – Ironwood to Meridian
5. Meridian Road – Ocotillo to Queen Creek
6. Riggs Road – Ellsworth to Meridian
7. Meridian Road - Combs to QC Wash

# Transportation Improvement Program: Phase 3 – SR24 and Road Widening

ongoing



1. Signal Butte - Germann to SR 24
2. Meridian - Queen Creek to SR 24
3. Queen Creek - Ellsworth to Crismon
4. Queen Creek and Signal Butte
5. Ocotillo - Hawes to Sossaman
6. Town Center Streets
7. Ocotillo – Signal Butte to Ironwood
8. Power Road- Brooks Farms to Ch. Heights
9. Ch. Heights – Sossaman to Recker
10. Meridian Road - Combs to QC Wash

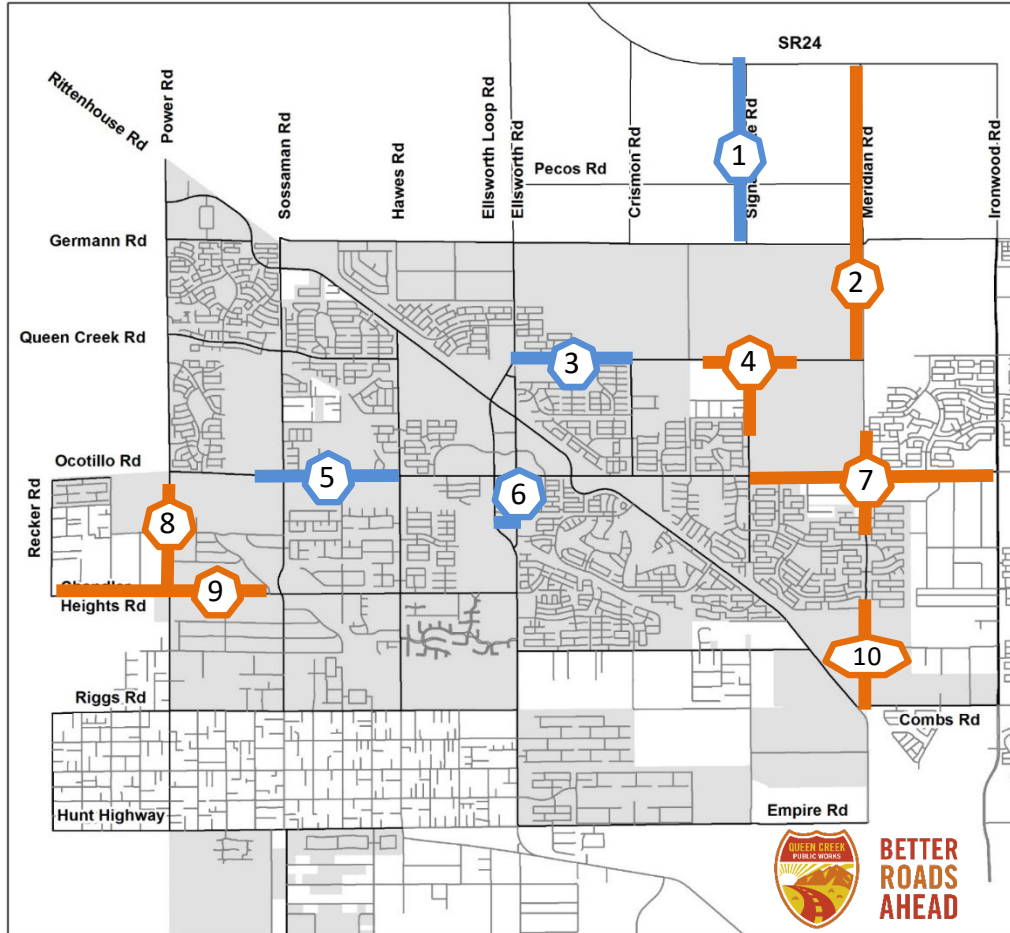
## Transportation Improvement Program: Phase 3 Challenges

- COVID-19
  - Utility companies hardest hit
  - SRP the most and longest delays
- Supply Chain Issues
  - Traffic poles, steel materials, conduit, piping, cement, fiber, etc.
- Contractor labor shortage



# Transportation Improvement Program: Phase 3 – SR24 and Road Widening

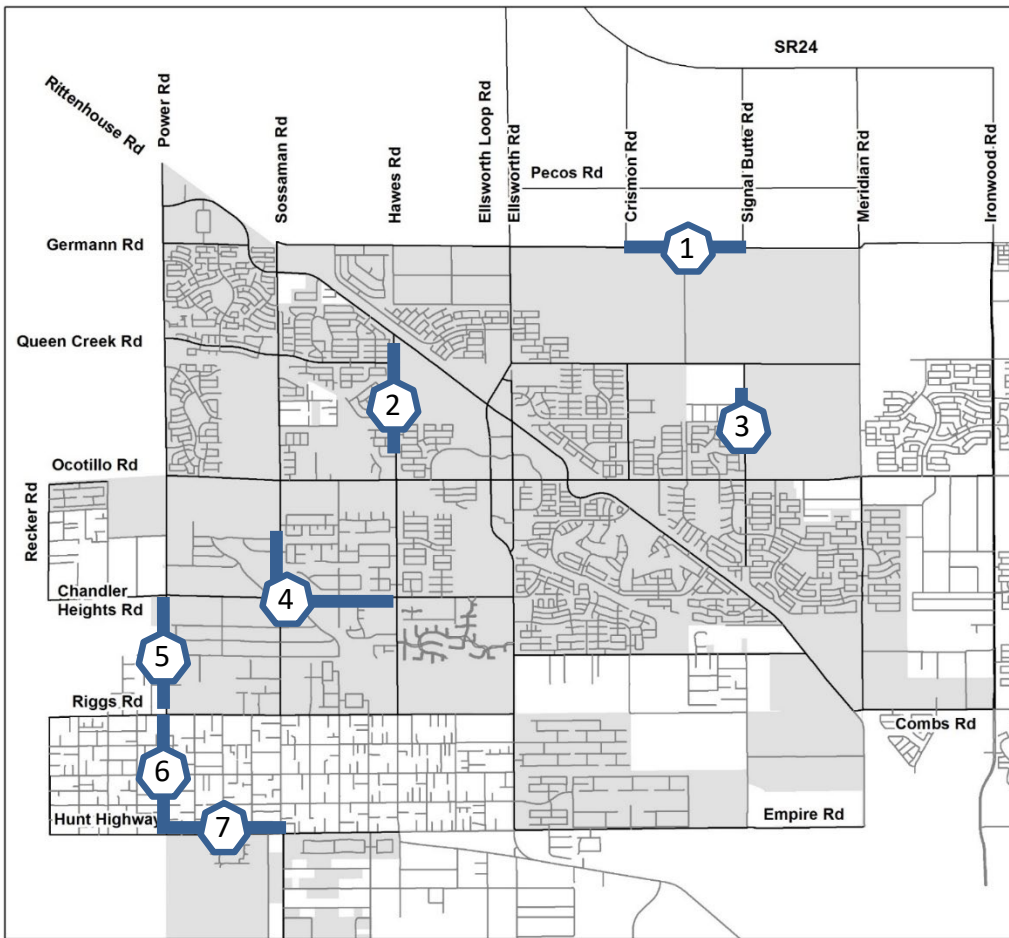
ongoing



1. Signal Butte - Germann to SR 24
2. Meridian - Queen Creek to SR 24
3. Queen Creek - Ellsworth to Crismon
4. Queen Creek and Signal Butte
5. Ocotillo - Hawes to Sossaman
6. Town Center Streets
7. Ocotillo – Signal Butte to Ironwood
8. Power Road- Brooks Farms to Ch. Heights
9. Ch. Heights – Sossaman to Recker
10. Meridian Road - Combs to QC Wash



# Transportation Improvement Program: Phase 4 – Next in Queue



1. Germann – Crismon to Signal Butte
2. Hawes Road – Ocotillo to Rittenhouse
3. Signal Butte – Queen Creek to Appleby
4. Chandler Heights – Sossaman to Hawes
5. Power Road - Chandler Heights to Riggs
6. Power – Riggs to Hunt Hwy
7. Hunt Hwy – Power to Sossaman

# Transportation Improvement Program: Scorecard - Projects Completed Since 2017

1. Ellsworth Road – Queen Creek to Germann
2. Rittenhouse Road – Market to Sossaman (2016)
3. Ocotillo Road – Ellsworth Loop to Crismon
4. Power Road – Ocotillo to Brooks Farm
5. Rittenhouse Road – Ocotillo to Riggs
6. Ocotillo Road – Power to Recker
7. Crismon Road – Queen Creek to Germann
8. Signal Butte – Queen Creek to Germann
9. Germann Road – Ironwood to Meridian
10. Meridian Road – Ocotillo to Queen Creek
11. Riggs Road – Ellsworth to Meridian
12. Meridian Road – Combs to QC Wash (interim)

**47 New Lane Miles**





Questions/Comments