

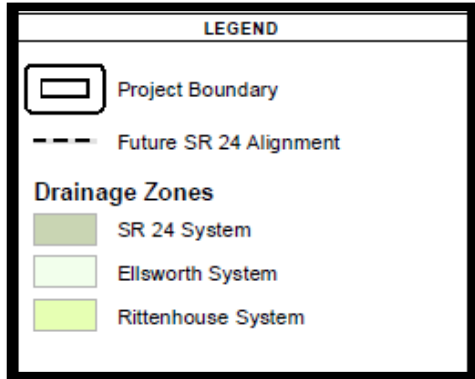
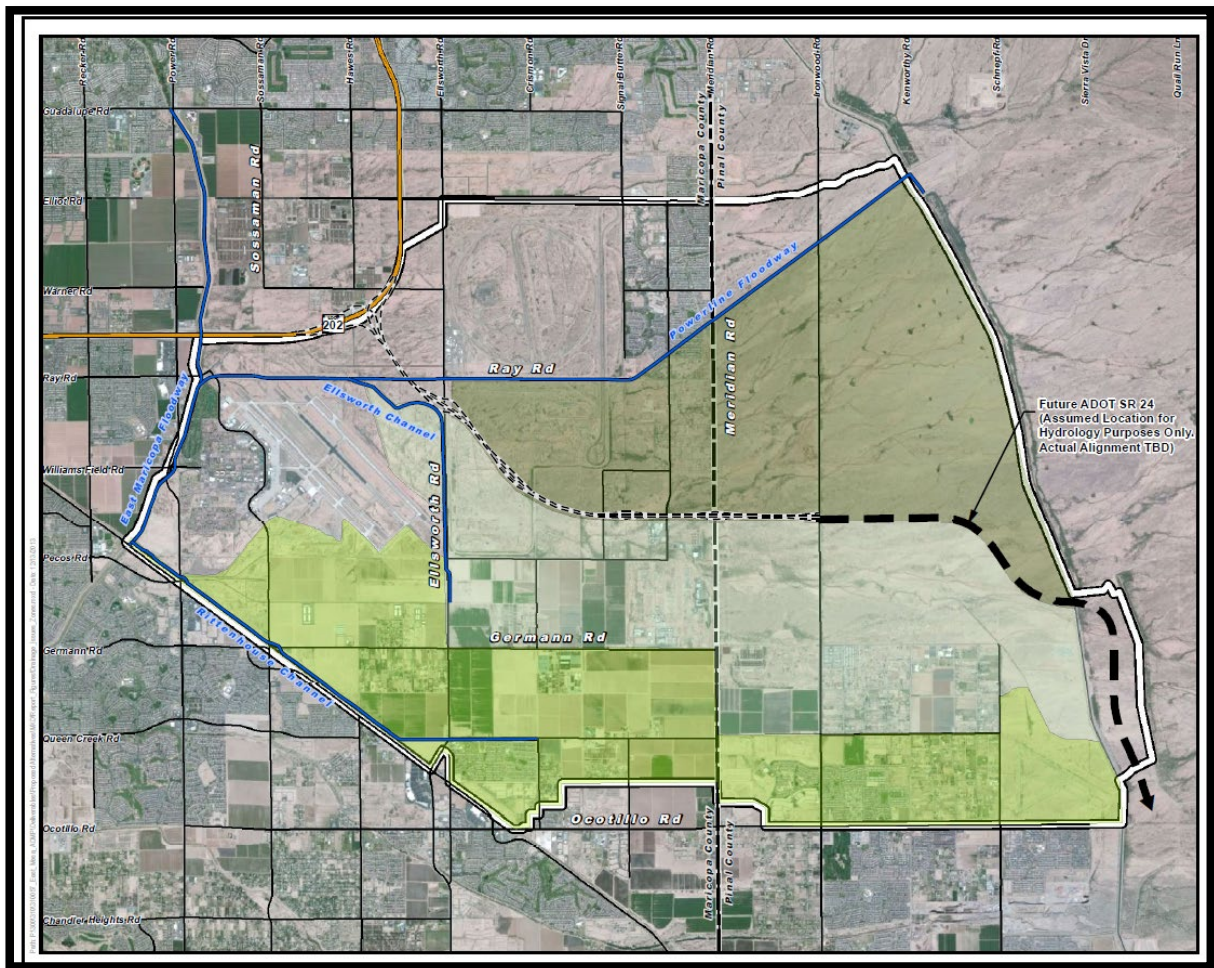


East Park Drainage Channel Update a part of East Mesa Area Drainage Master Plan

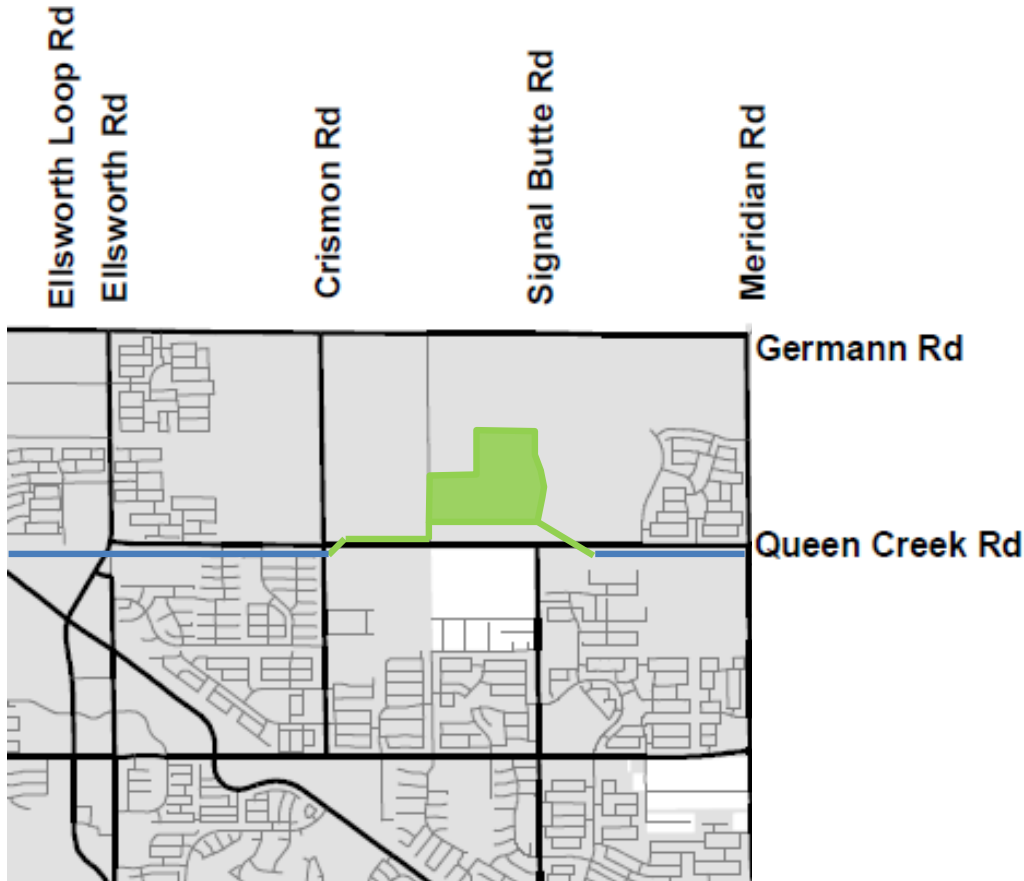
Troy White, Director of Public Works

Town Council 4.7.21

East Mesa Area Drainage Master Plan Project Boundary



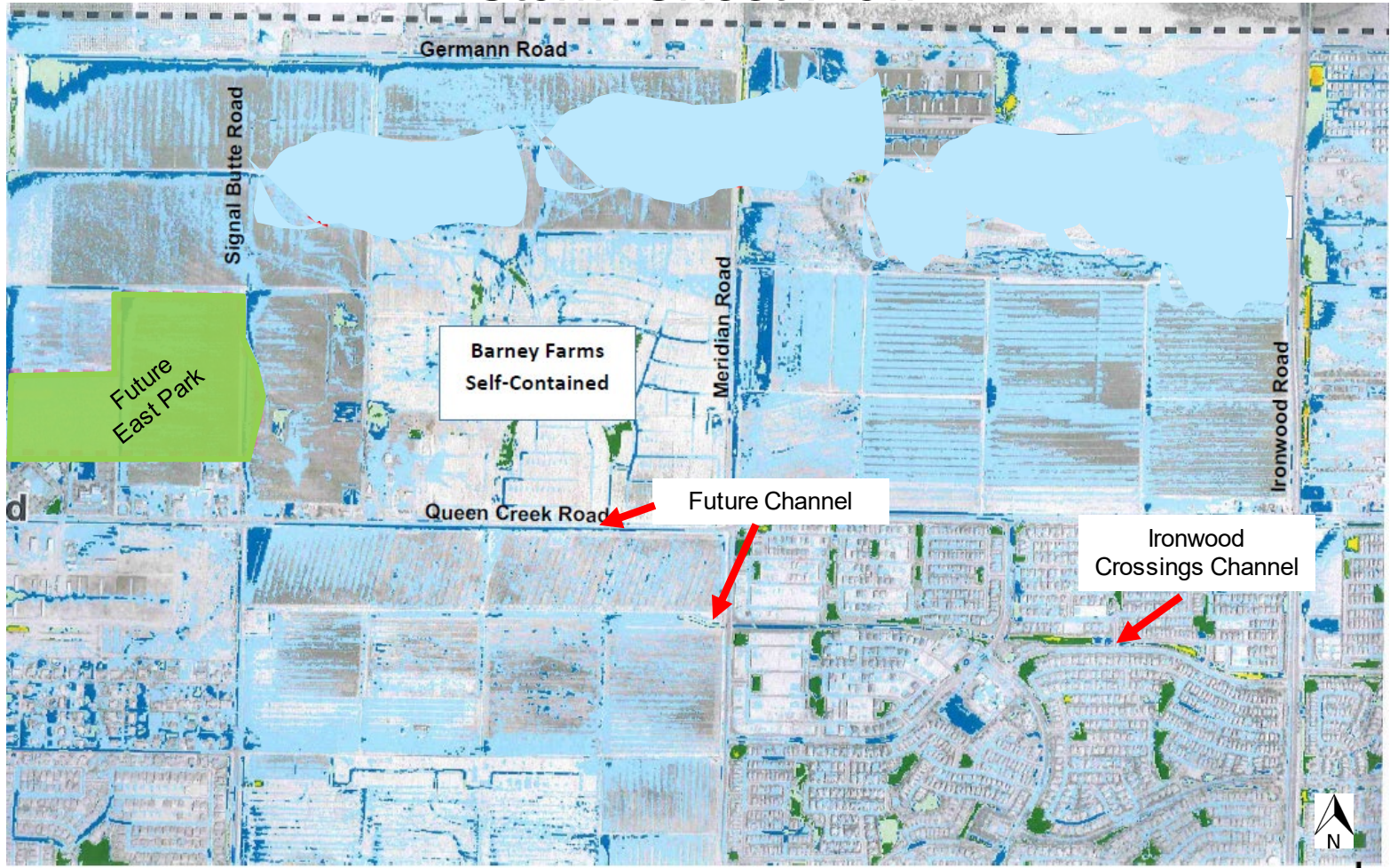
Project Purpose



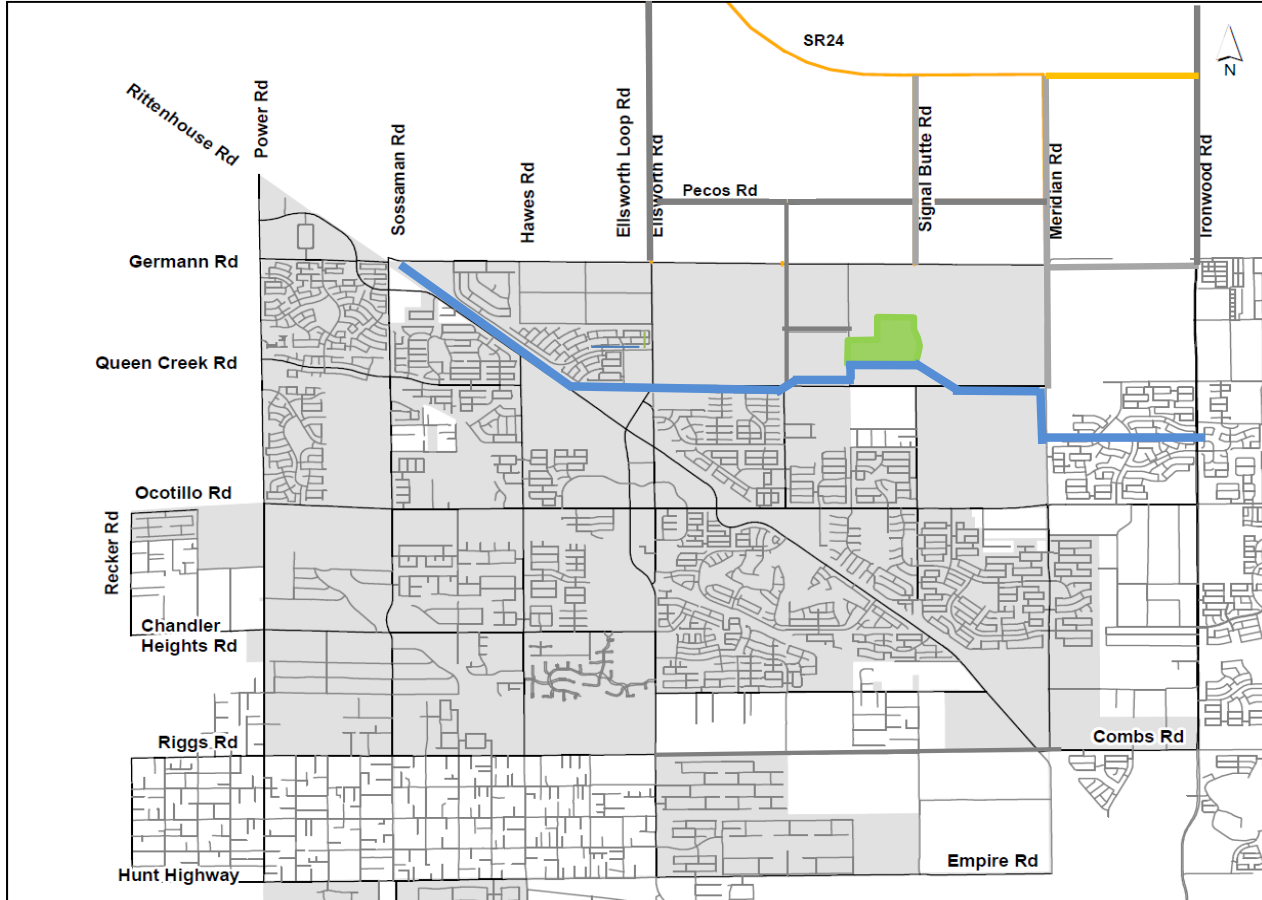
Solves major portion of the storm flooding issues for the northeast section of Town

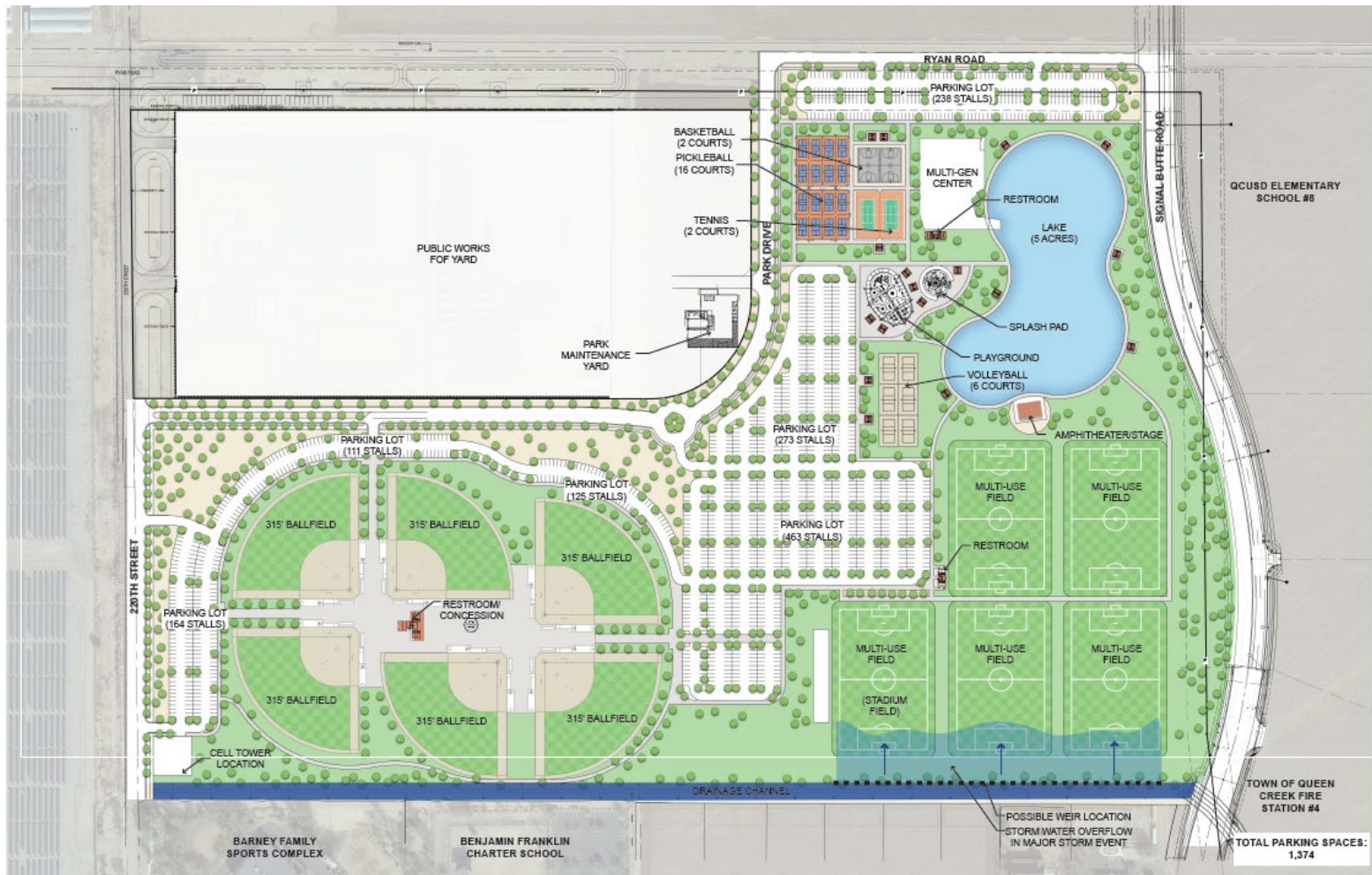
- Joint effort between the Town FCDMC, and Private development
- The Town and FCDMC \$8 Million IGA (50/50)
- Project consist of Basins, Channels, and box culverts
- Will connect to Rittenhouse Channel → East Maricopa Floodway

Storm Sheet Flow



East Park Drainage Basin



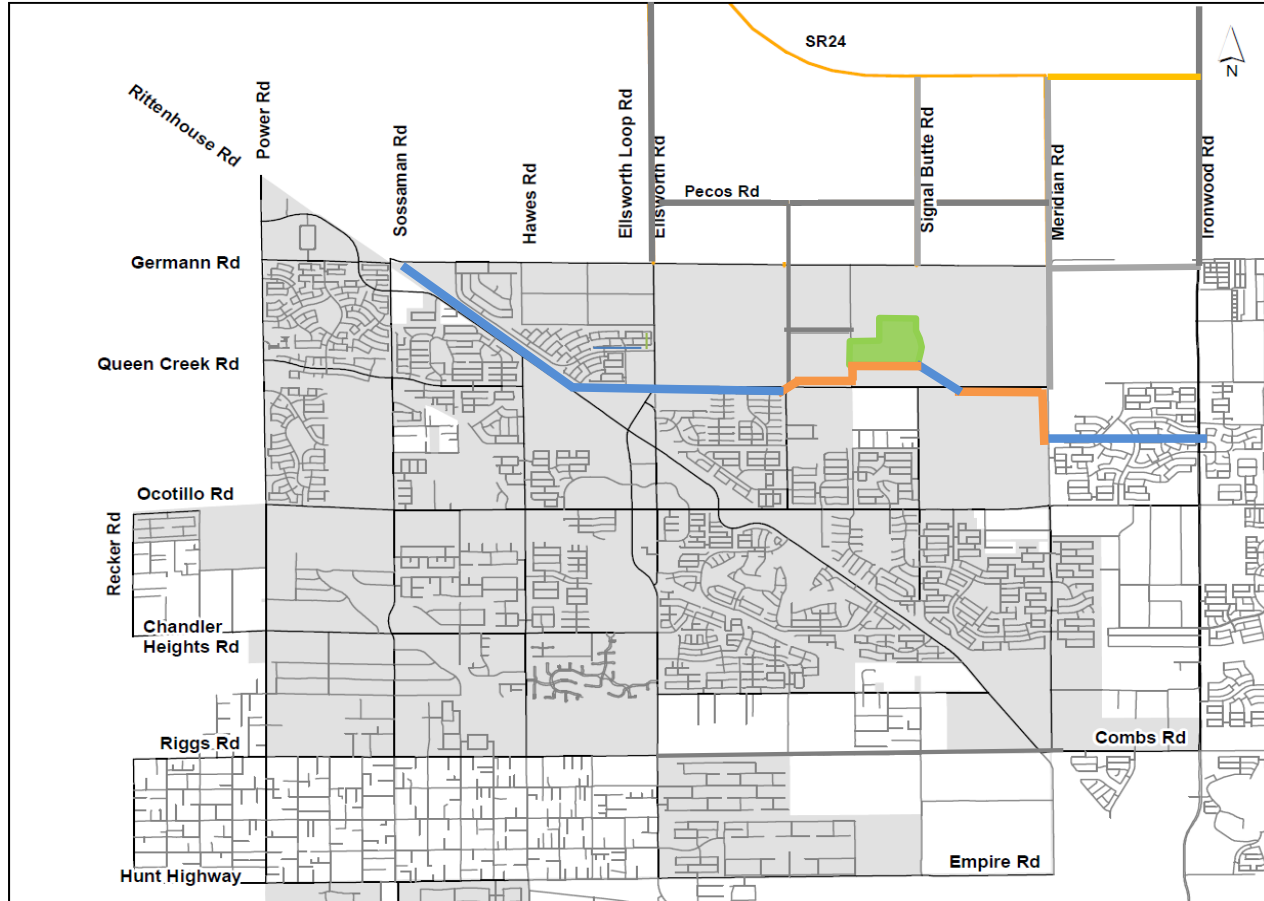


Next Steps

- Channel to 100% (park to 60%)
- Channel system bid
- Construction of channel drainage system



East Park Drainage Basin

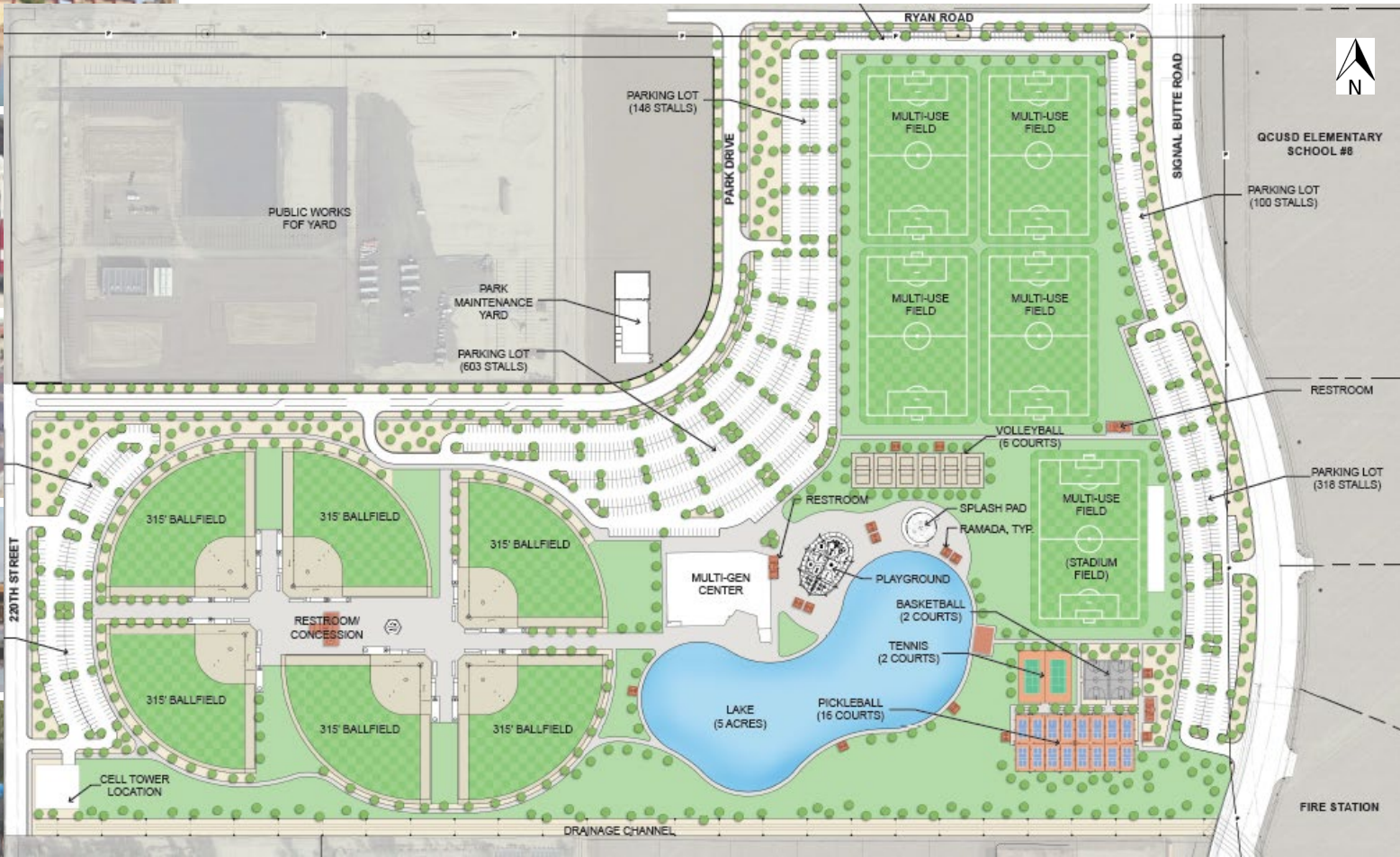




Question/Comments



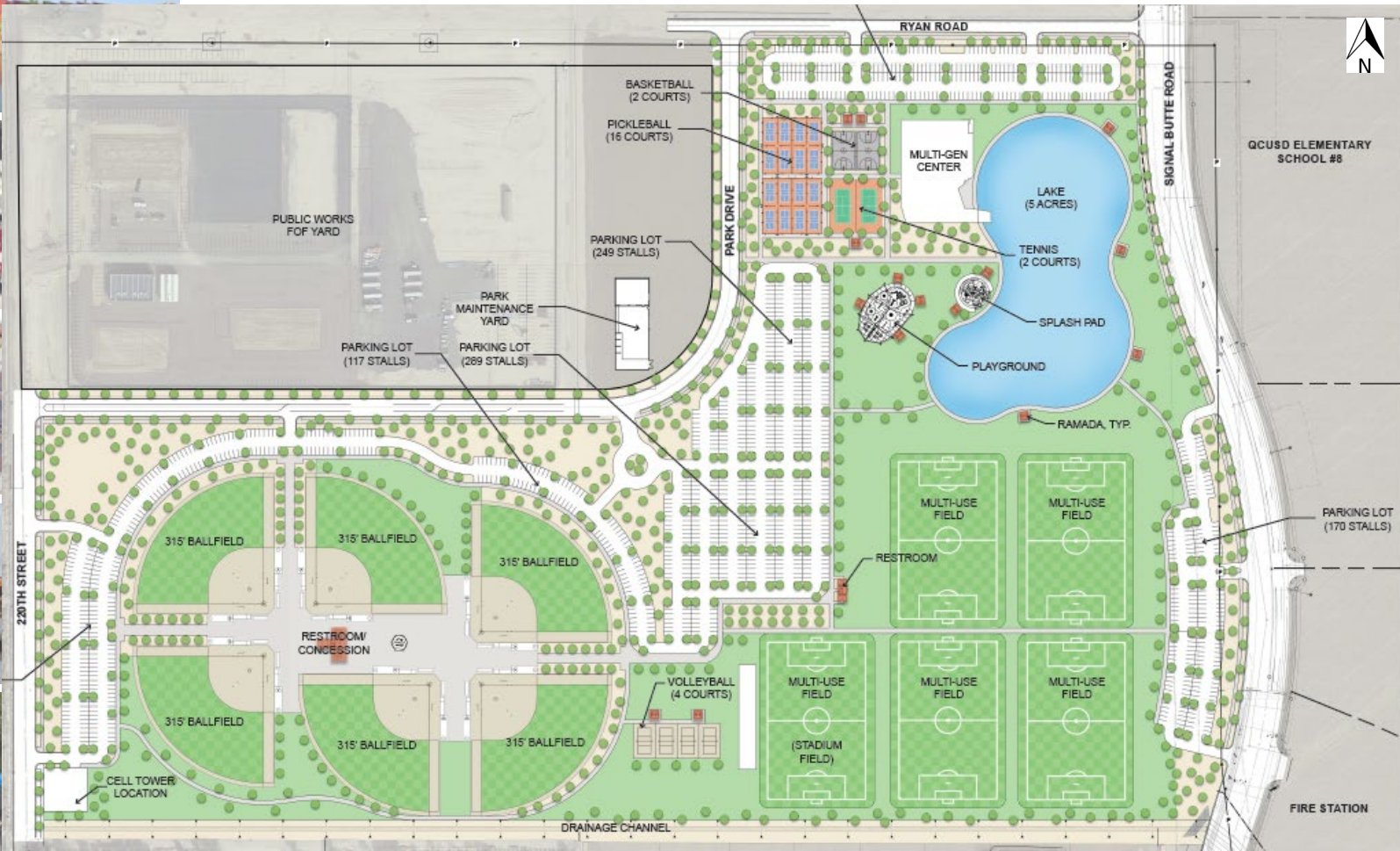
East Park – Concept #1



East Park – Concept #2



East Park – Concept #3



QCUSD ELEMENTARY SCHOOL #8

FIRE STATION