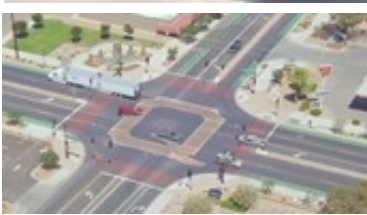




Harvest Station MF Rezoning P20-0079

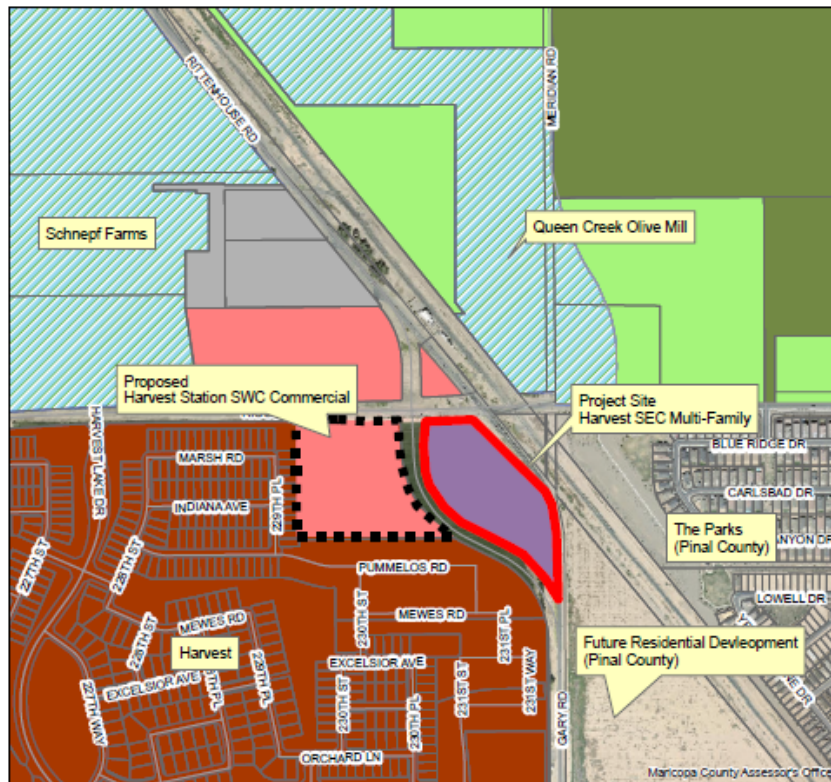
Council Briefing





Aerial Photo

- 12.58 acres



Zoning Districts

C-1 - Commercial	PQP - Public/Quasi-Public	R1-6 - Residential	R1-18 - Residential
C-2 - Commercial	RC - Recreation/Conservation	R1-7 - Residential	R1-35 - Residential
C-3 - Commercial	MDR - Residential	R1-8 - Residential	R1-43 - Residential
TC - Commercial	HDR	R1-9 - Residential	R1-54 - Residential
EMPA - Office/Industrial Park	R1-4 - Residential	R1-12 - Residential	R1-190 - Residential
EMP B - General Industrial	R1-5 - Residential	R1-15 - Residential	PCD - Planned Community
			AT - Agritainment

Zoning Exhibit

- Existing: R1-43
- Proposed: HDR

Project Details

- Rezone from R1-43 to HDR
- No proposed deviations from HDR standards
- Requires future Site Plan review by PZ
- 2 neighborhood meetings – 1 email opposed
- PZ 7-0 recommendation for approval
 - 1 resident spoke at PZ asked if community was gated
 - 1 opposed comment card submitted, did not speak

