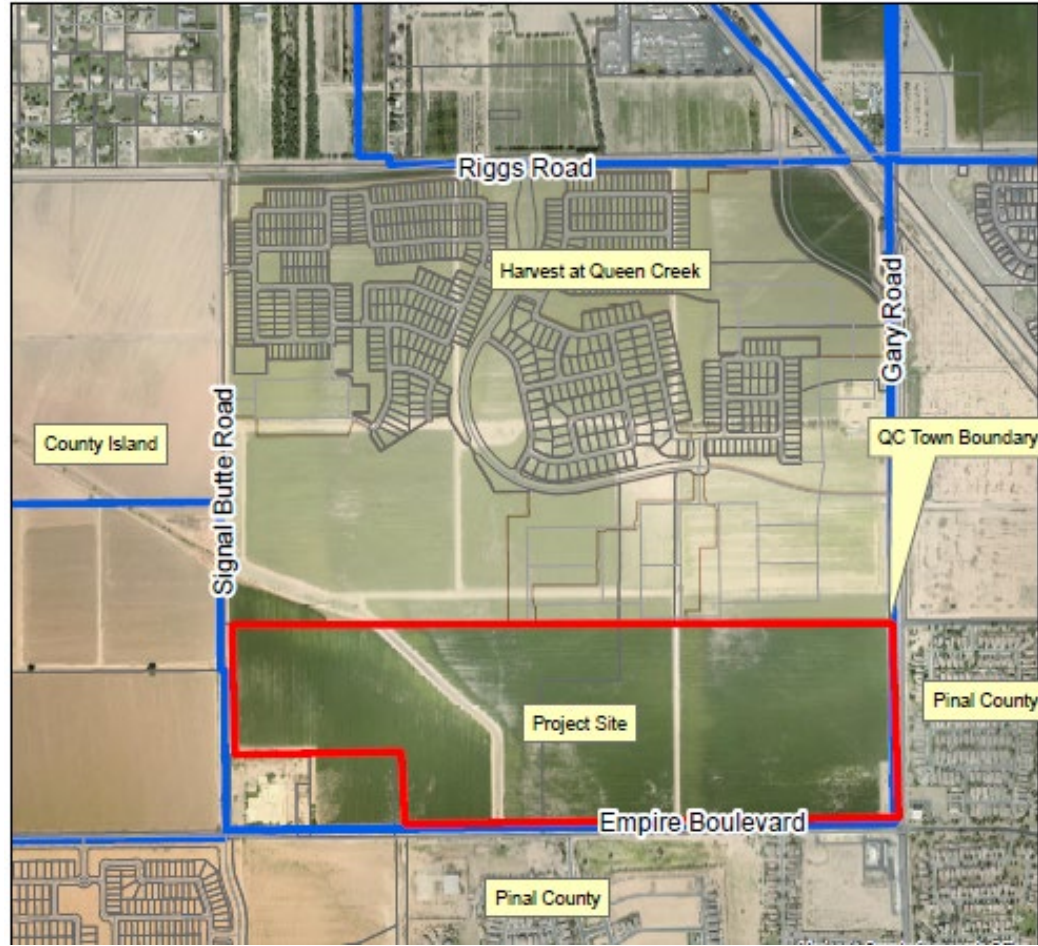
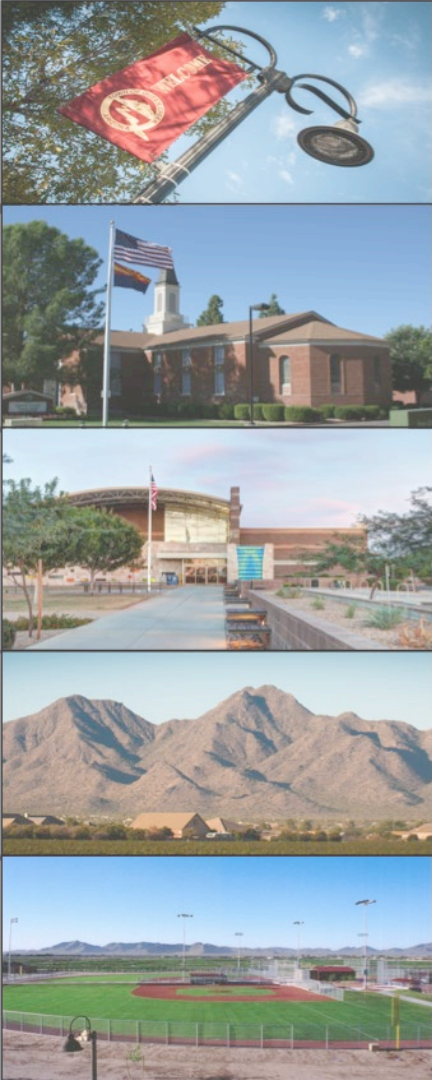




EMPIRE POINT REZONING CASE: P18-0193

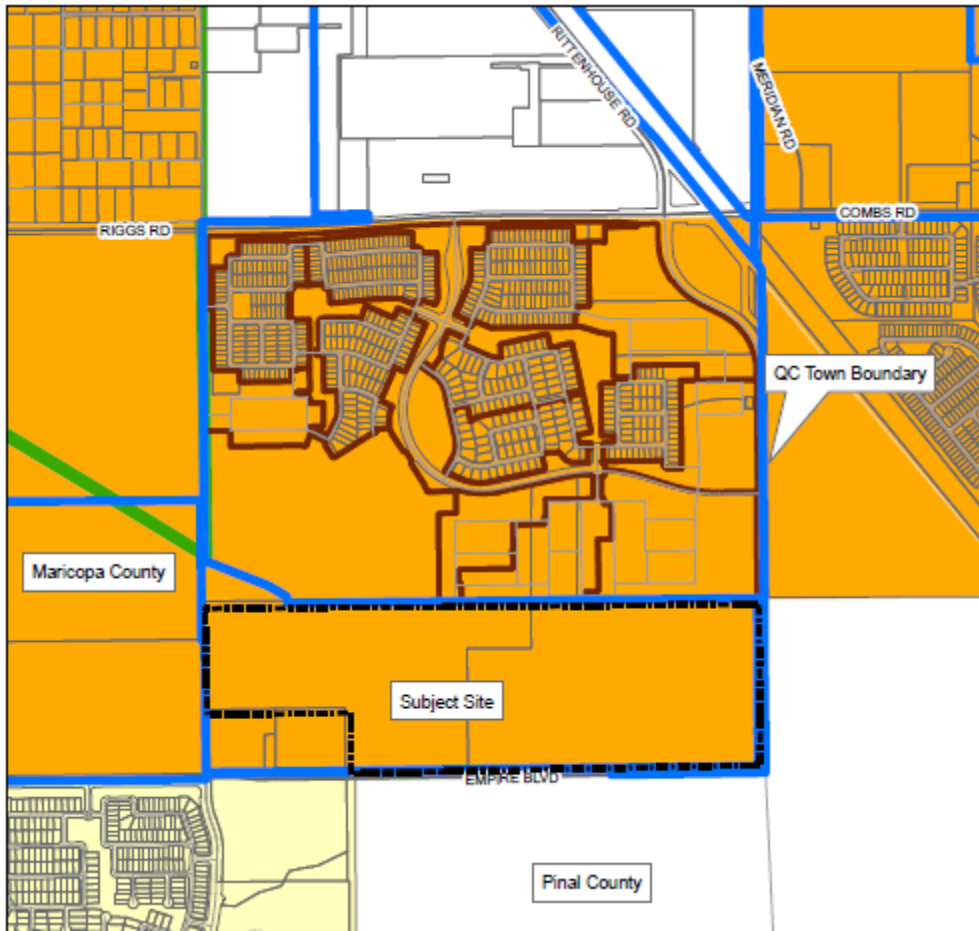
TOWN COUNCIL
JUNE 3, 2020





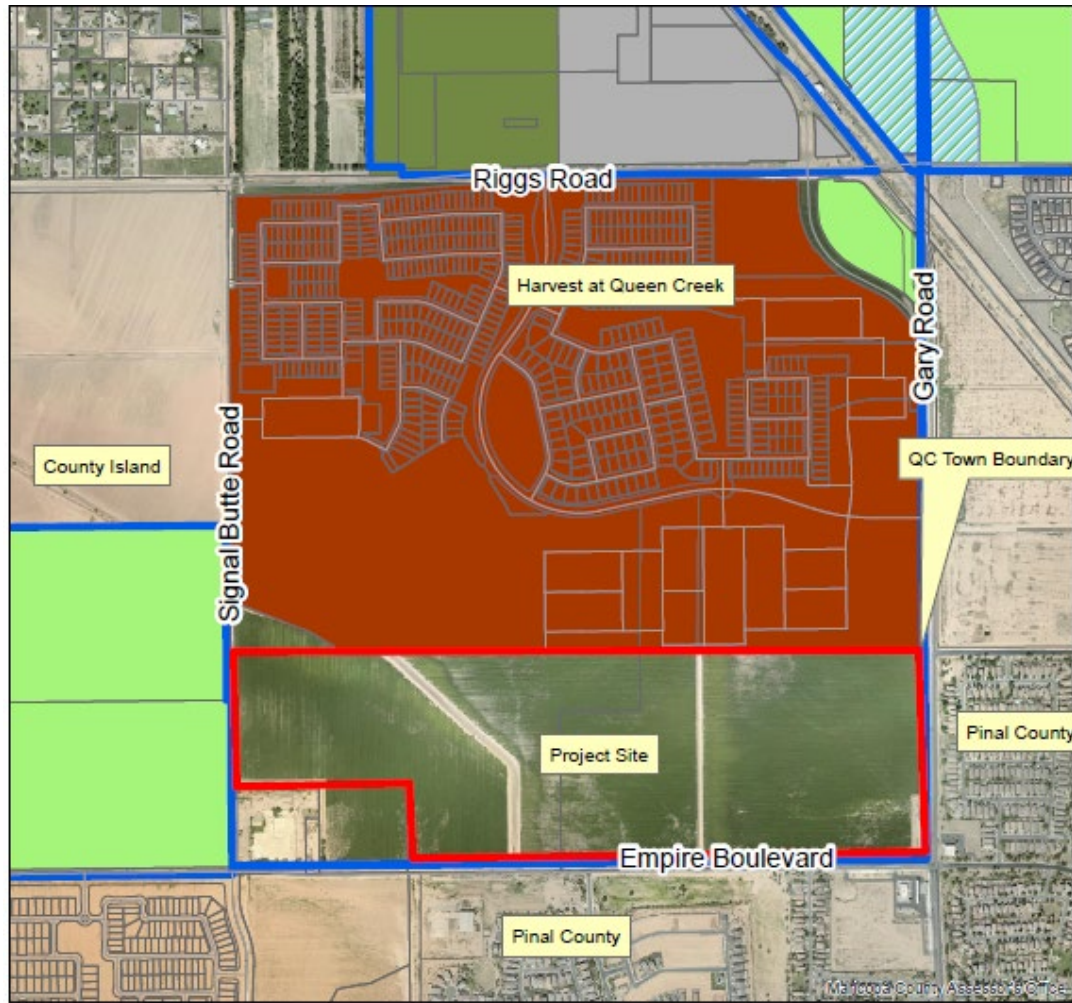
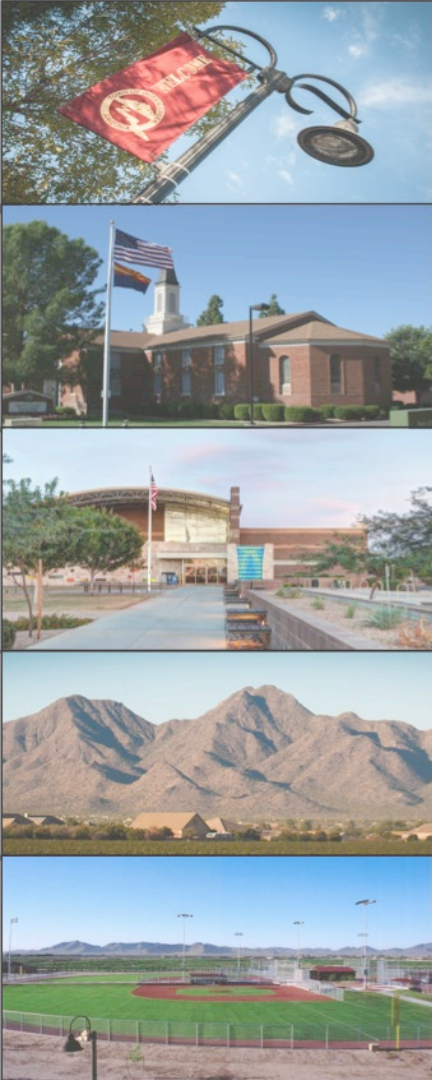
AERIAL PHOTO EXHIBIT





GENERAL PLAN EXHIBIT



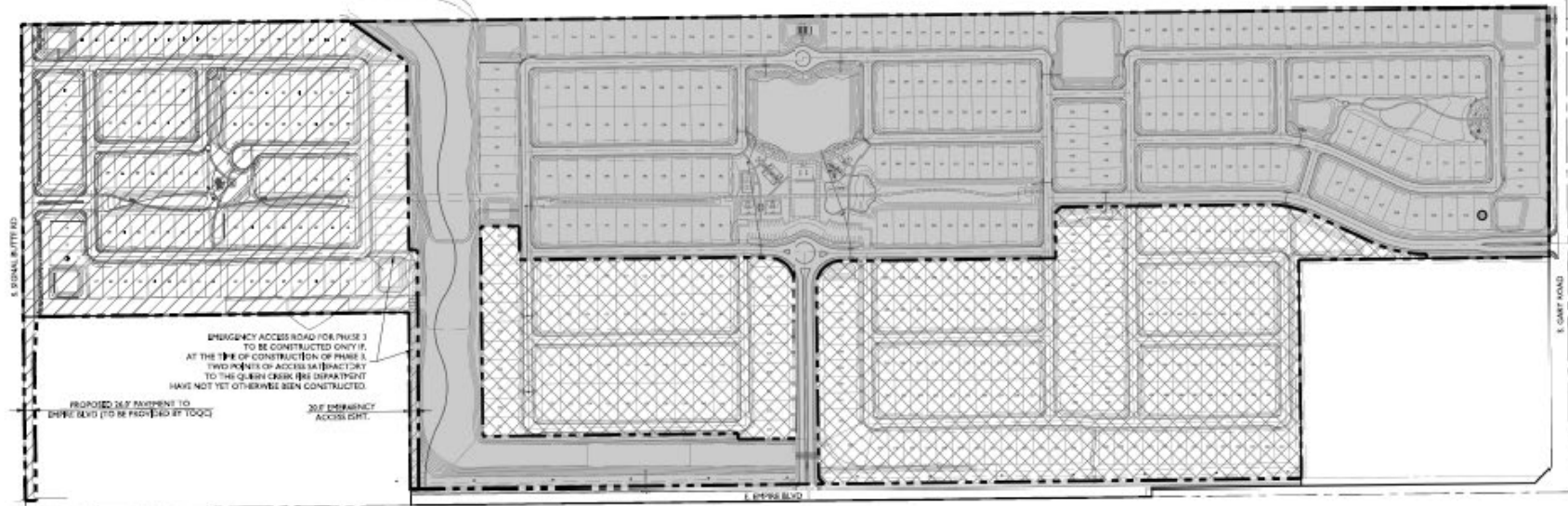


ZONING EXHIBIT






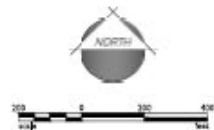


- 533 lots, 3.49 du/ac (gross)
- 50'x115' (5,570 sq. ft.) – 178 lots
- 55'x120' (6,600 sq. ft.) – 235 lots
- 65'x125' (8,125 sq. ft.) – 120 lots
- 29% (43.5 acres) open space provided / 20% req'd
- 48% (14.6 acres) is active open space / 30% is req'd
- Improving Sonoqui Wash



PHASING LEGEND

-  PHASE 1
-  PHASE 2
-  PHASE 3



- Phase 1 – 204 lots
- Phase 2 – 216 lots
- Phase 3 – 113 lots



Thank you

