



Maricopa County Sheriff's Office  
Town of Queen Creek *2019 Annual Law Enforcement Summary*





# Maricopa County Sheriff's Office

Town of Queen Creek *2019 Annual Law Enforcement Summary*



## Topics:

- Policing Activity
- Traffic Activity
- Uniform Crime Report Estimates

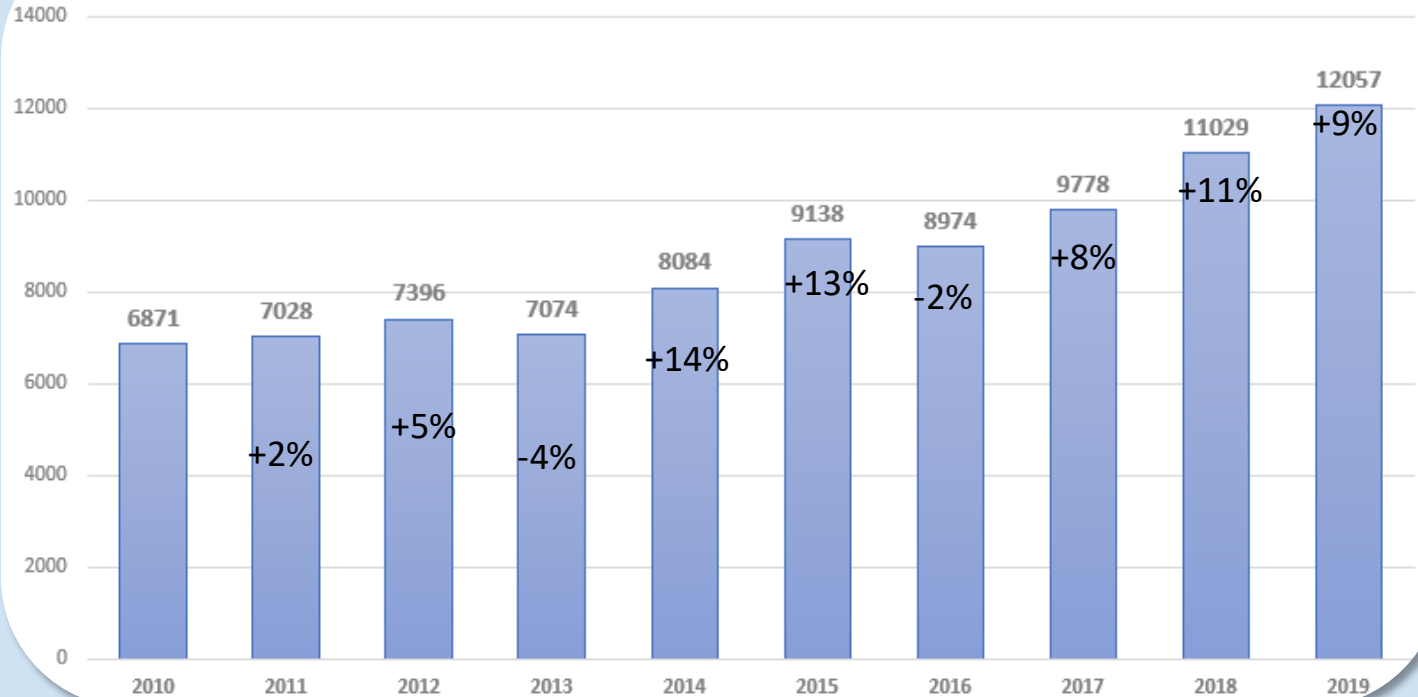


# Maricopa County Sheriff's Office

## Town of Queen Creek 2019 Annual Law Enforcement Summary



Calls for Service 2010-2019



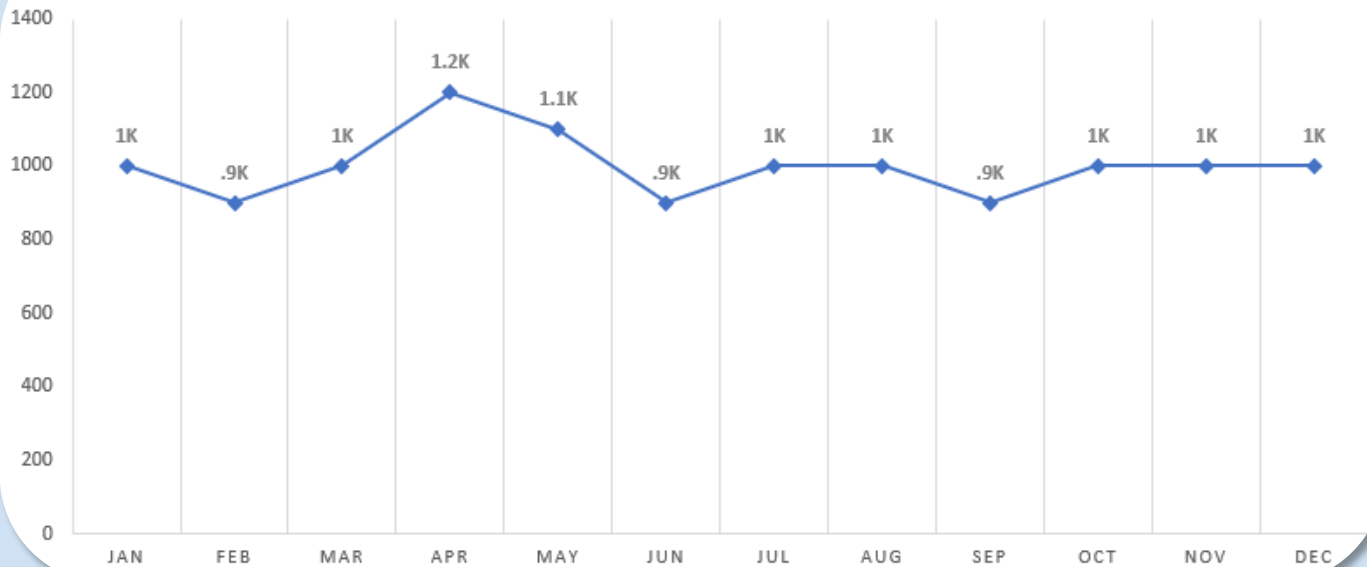


# Maricopa County Sheriff's Office

## Town of Queen Creek 2019 Annual Law Enforcement Summary



### 2019 CALLS FOR SERVICE BY MONTH



1004.75 Average Monthly Calls for Service

33.03 Average Daily Calls for Service



# Maricopa County Sheriff's Office

## Town of Queen Creek 2019 Annual Law Enforcement Summary



### Top 10 Calls for Service by Year

Rank	Call Type	2014	2015	2016	2017	2018	2019	Total
1	Welfare Check	668	777	902	1157	1464	1430	6398
2	Vehicle Crash (No Injuries)	540	738	760	925	1042	1150	5155
3	All Suspicious Activity	696	886	875	905	935	1015	5312
4	False Burglar Alarm	501	719	680	704	717	822	4143
5	Citizen/Motor Assist	139	161	223	320	492	481	1816
6	Traffic Hazard	229	261	356	387	442	436	2111
7	Civil Action	243	355	299	253	263	290	1703
8	Theft	146	183	151	173	191	201	1045
9	Loud Neighbors Distrubing	175	165	164	209	195	183	1091
10	Attempt to Locate	156	141	134	123	156	138	848
<b>Total</b>		<b>3493</b>	<b>4386</b>	<b>4544</b>	<b>5156</b>	<b>5897</b>	<b>6146</b>	
<b>Percentage of All Calls for Service</b>		<b>43%</b>	<b>48%</b>	<b>51%</b>	<b>52%</b>	<b>53%</b>	<b>51%</b>	

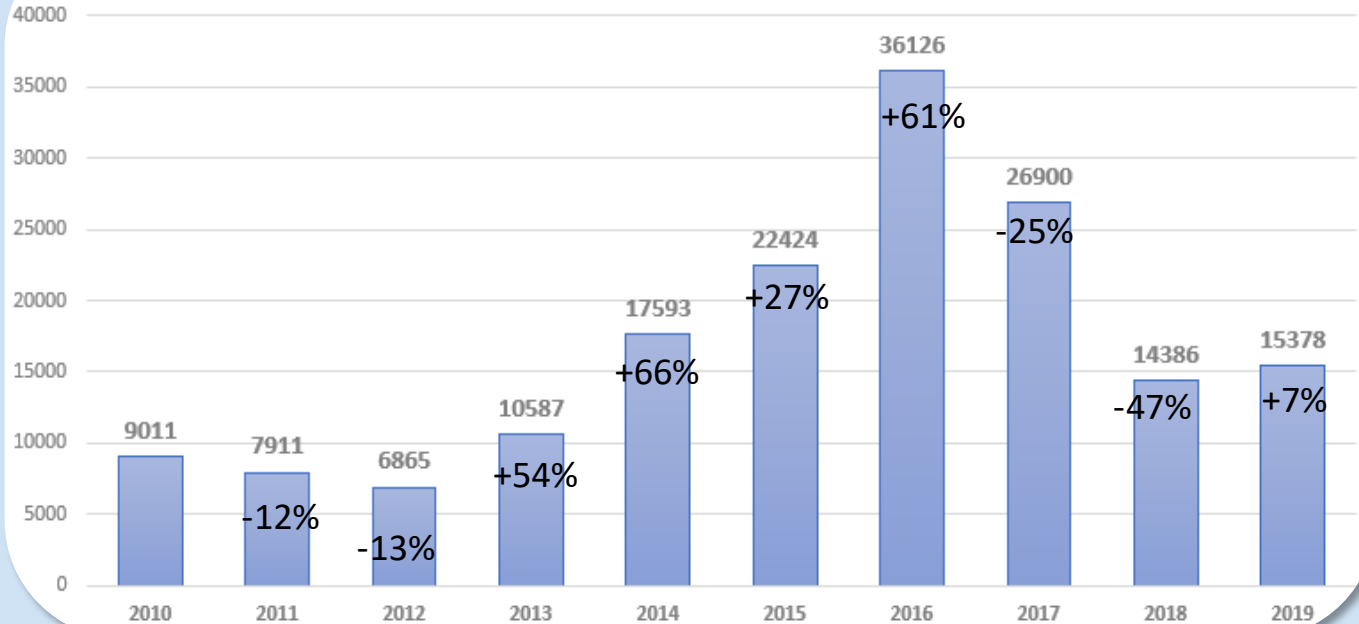


# Maricopa County Sheriff's Office

## Town of Queen Creek 2019 Annual Law Enforcement Summary



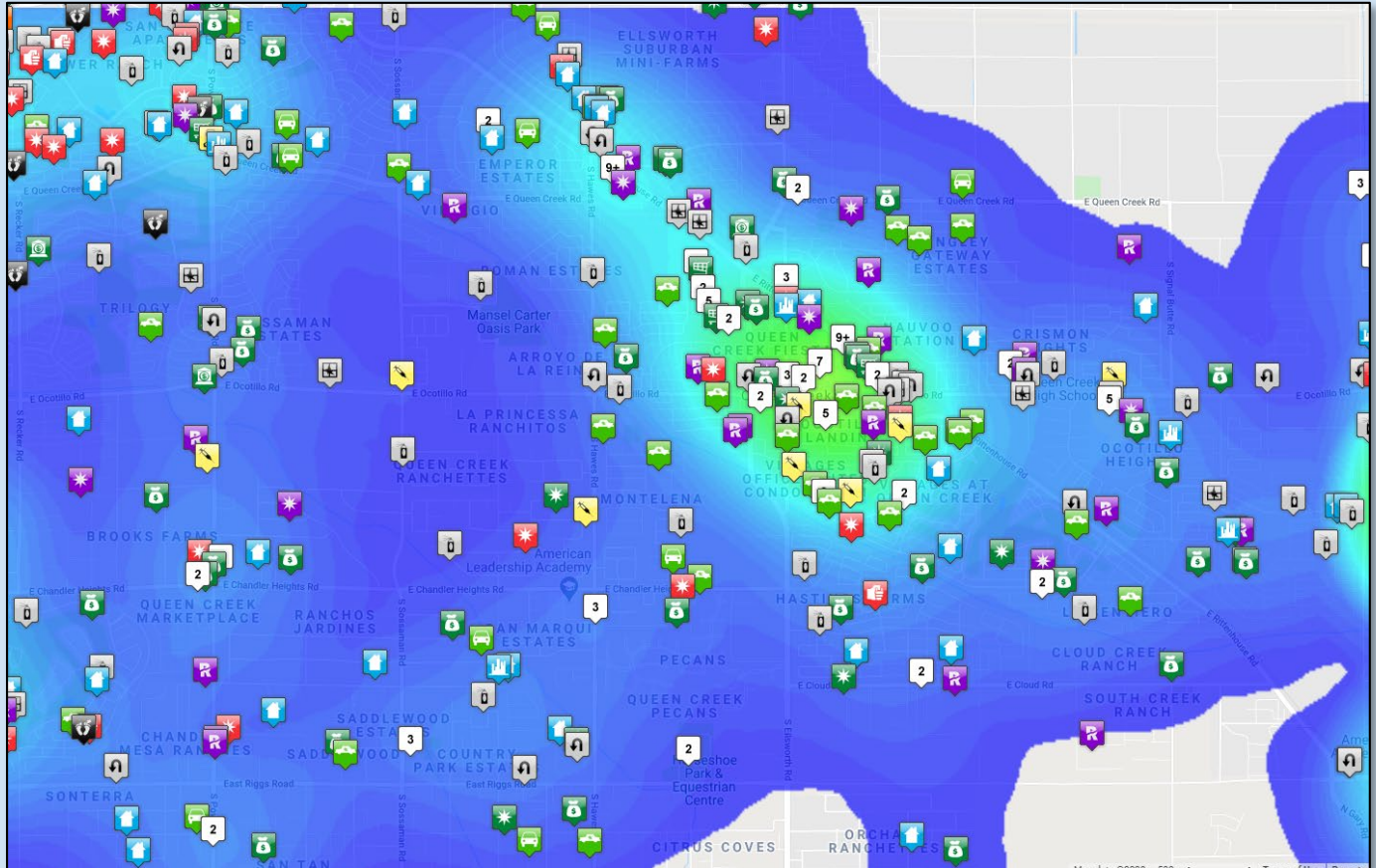
On View Events by Year





# Maricopa County Sheriff's Office

## Town of Queen Creek 2019 Annual Law Enforcement Summary



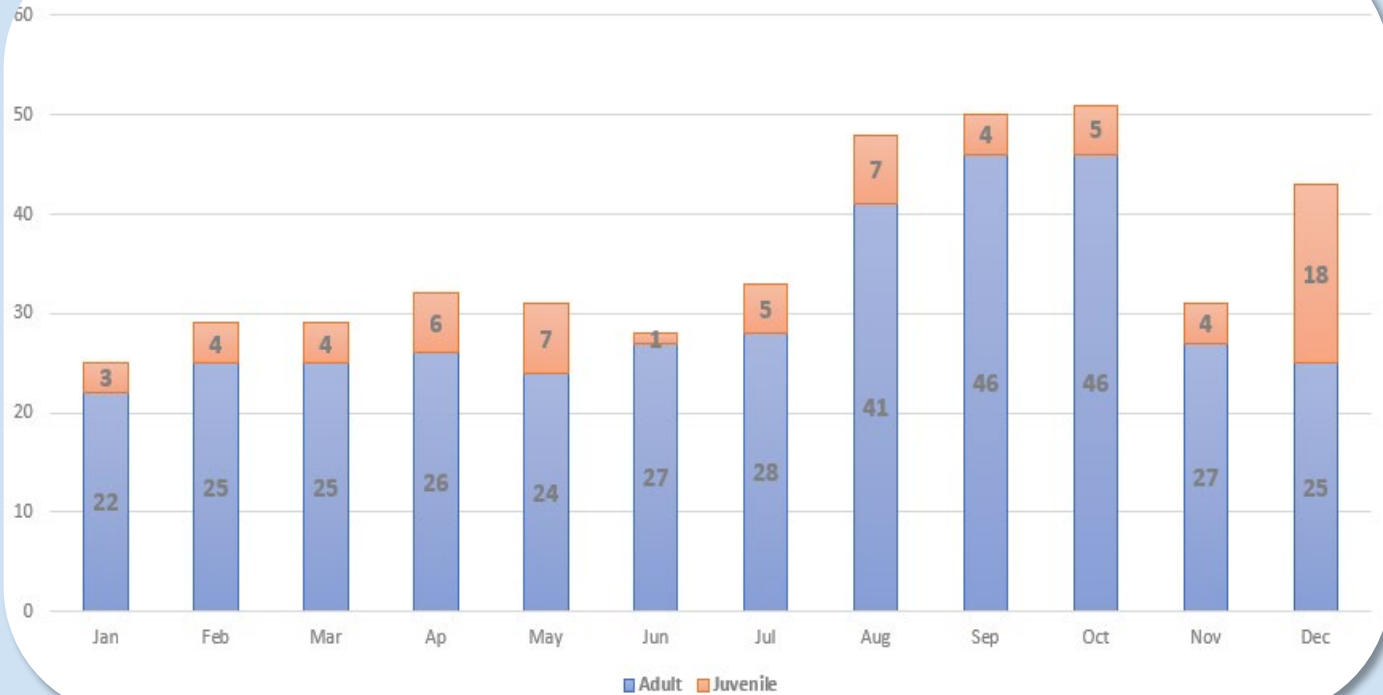


# Maricopa County Sheriff's Office

## Town of Queen Creek 2019 Annual Law Enforcement Summary



Arrests by Month 2019







# Maricopa County Sheriff's Office

Town of Queen Creek *2019 Annual Law Enforcement Summary*



## Total Arrests:

- Adult: 362
  - About 1 adult arrest per day
- Juvenile: 68
  - 1 juvenile arrest on average every 5.6 days

# Maricopa County Sheriff's Office

## Town of Queen Creek 2019 Annual Law Enforcement Summary



### Top 3 In-Custody Charges (Adult AND Juvenile)

Crime	Counts
WARRANT	81
ASSAULT-INTENT/RECKLESS/INJURE	20
DISORDERLY CONDUCT-FIGHTING	10
ASSAULT-TOUCHED TO INJURE	10
TOTAL	121

### Top 3 Cite & Release Charges (Adult AND Juvenile)

Crime	Count
DRIVE W/LIC SUSP/REVOKE/CANC	61
DUI-LIQUOR/DRUGS/VAPORS/COMBO	28
DUI W/BAC OF .08 OR MORE	24
TOTAL	113

### Top 3 Referral/Submittal Charges (Adult AND Juvenile)

Crime	Counts
DISORDERLY CONDUCT-FIGHTING	24
ASSAULT-INTENT/RECKLESS/INJURE	22
SHOPLIFTING-REMOVAL OF GOODS	20
TOTAL	66



# Maricopa County Sheriff's Office

## Town of Queen Creek 2019 Annual Law Enforcement Summary



### Top 3 Adult Charges

Crime	Counts
WARRANT	72
DRIVE W/LIC SUSP/REVOKE/CANC	66
DUI-LIQUOR/DRUGS/VAPORS/COMBO	40
TOTAL	178

### Top 3 Juvenile Charges

Crime	Counts
UNDERAGE CONSUMPTION OF ALC.	25
SHOPLIFTING-REMOVAL OF GOODS	18
ASSAULT-INTENT/RECKLESS/INJURE	18
TOTAL	61



# Maricopa County Sheriff's Office

Town of Queen Creek *2019 Annual Law Enforcement Summary*



## Total Traffic Stops 2019:

- 4,264 traffic stops (770 more than 2018; 22% increase)
- 11.68 traffic stops per day

## Top 3 Reasons:

- Speeding (41%)
- Expired Plates/Registration (16%)
- Non-Moving Violation (12%)

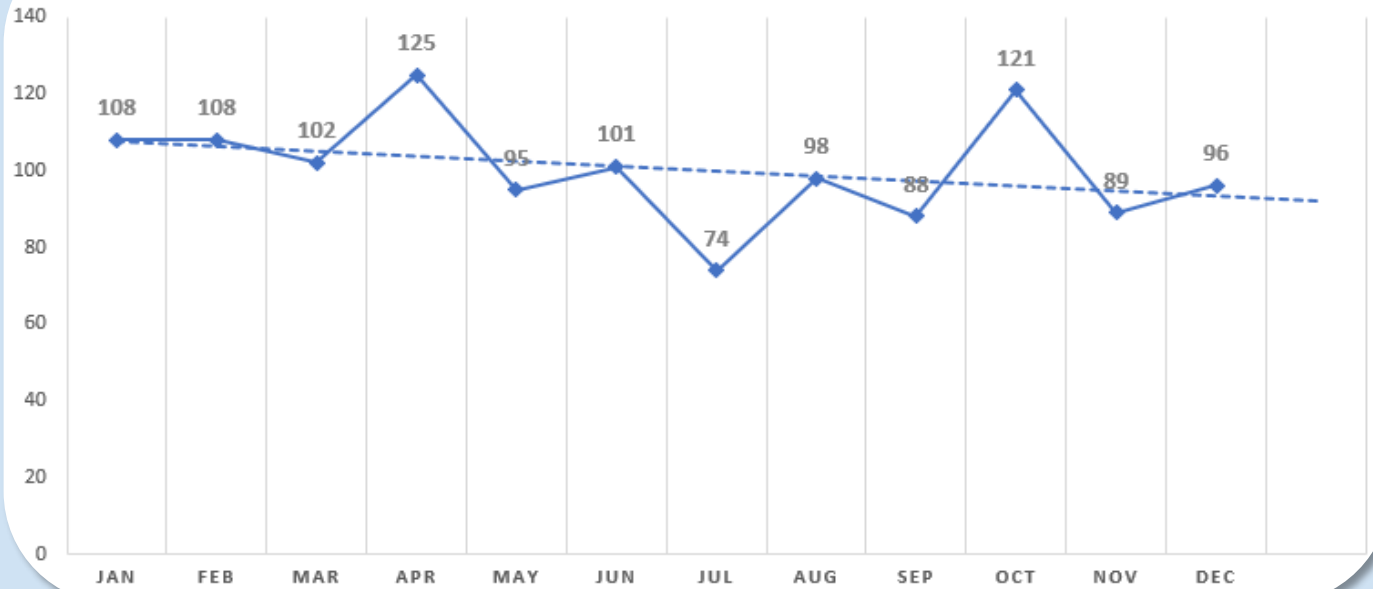


# Maricopa County Sheriff's Office

## Town of Queen Creek 2019 Annual Law Enforcement Summary



COLLISIONS BY MONTH 2019





# Maricopa County Sheriff's Office

## Town of Queen Creek 2019 Annual Law Enforcement Summary



### Uniform Crime Report Estimates 2019

Crime Against	Classification	2012	2013	2014	2015	2016	2017	2018	2019	% Change 2018-2019
Person	Agg. Assault	7	15	10	9	21	24	29	34	17%
	Homicide	0	0	0	1	0	0	0	1	N/A
	Robbery	6	2	3	9	5	2	5	5	0%
	Sexual Assault	8	6	18	3	8	51	36	52	44%
<b>Total Crimes Against Persons</b>		<b>21</b>	<b>23</b>	<b>31</b>	<b>22</b>	<b>34</b>	<b>77</b>	<b>70</b>	<b>92</b>	<b>31%</b>
Property	Arson	0	3	1	2	0	1	3	1	-67%
	Auto Theft	22	36	42	38	39	37	40	52	30%
	Burglary	202	96	100	85	85	112	92	153	66%
	Theft	292	329	460	360	360	545	557	529	-5%
<b>Total Crimes Against Property</b>		<b>516</b>	<b>464</b>	<b>603</b>	<b>485</b>	<b>484</b>	<b>695</b>	<b>692</b>	<b>735</b>	<b>6%</b>
* Before determining the final UCR classification, investigation and analysis are required to determine the factual outcomes for each event. Therefore, the information presented in this report is an estimate only and should be used cautiously when referenced.										

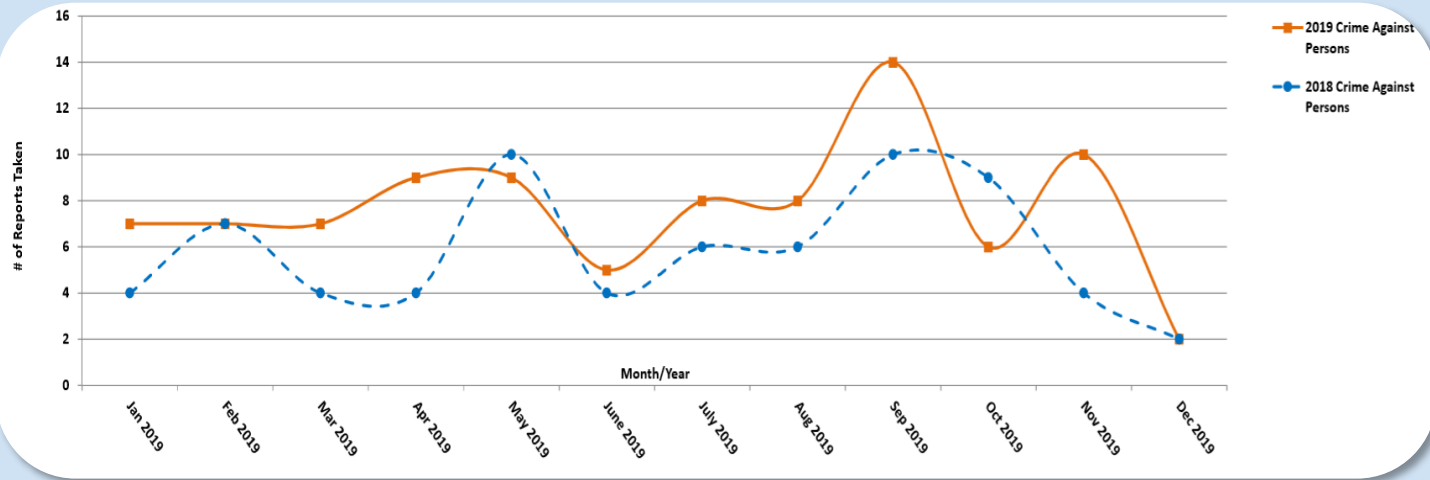


# Maricopa County Sheriff's Office

## Town of Queen Creek 2019 Annual Law Enforcement Summary



### Uniform Crime Report Estimates 2019 Crimes Against Persons\*



(\* ) This report is not intended to reflect the actual number of Part I crimes for this area. Further investigation and analysis are required to determine factual outcomes for each event before determining the final UCR classification. Therefore, the information presented in this report is an estimate only and should be used cautiously when referenced

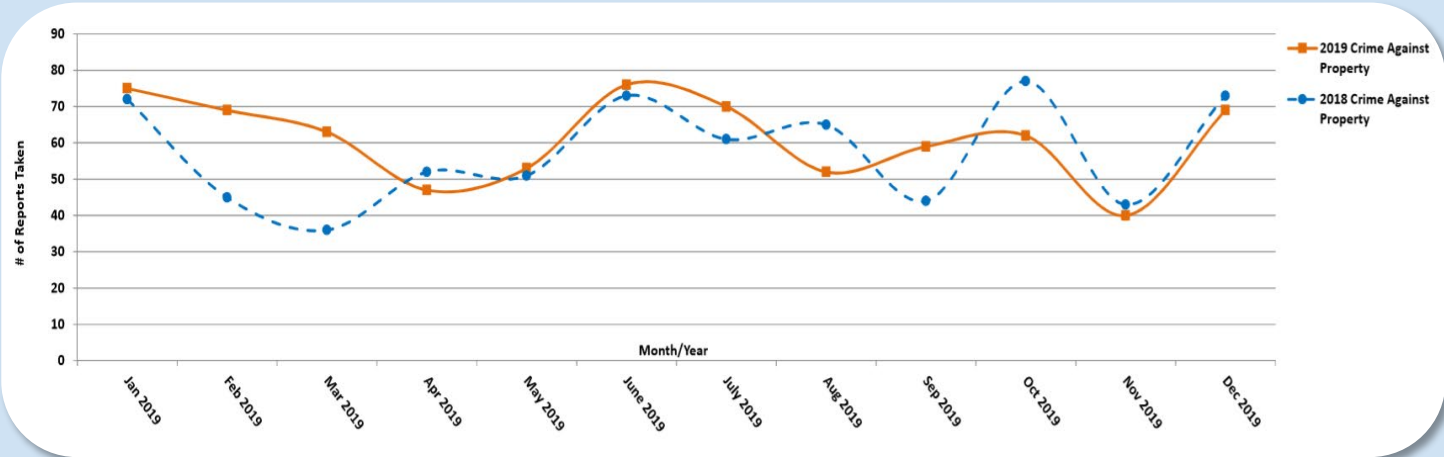


# Maricopa County Sheriff's Office

## Town of Queen Creek 2019 Annual Law Enforcement Summary



### Uniform Crime Report Estimates 2019 Crimes Against Property\*



(\* ) This report is not intended to reflect the actual number of Part I crimes for this area. Further investigation and analysis are required to determine factual outcomes for each event before determining the final UCR classification. Therefore, the information presented in this report is an estimate only and should be used cautiously when referenced





# Maricopa County Sheriff's Office

## Town of Queen Creek 2019 Annual Law Enforcement Summary



UCR Part 1 - Person Crime Estimates*							
2018	Population	Homicide	Sexual Assault/Rape	Robbery	Agg. Assault	Total Violent Crime:	Violent Crime per 1,000 Persons
Chandler	255,986	4	146	123	333	606	2.4
Gilbert	247,463	2	75	32	125	234	0.9
Mesa	504,873	17	238	417	1165	1837	3.6
Queen Creek	50,340	0	36	5	29	70	1.4
Scottsdale	254,961	7	122	87	206	422	1.7
Tempe	188,543	5	176	189	543	913	4.8
2019							
Queen Creek	56,619	1	52	5	34	92	1.6

*\*Before determining the final UCR classification, investigation and analysis are required to determine the factual outcomes for each event. Therefore, the information presented in this report is an estimate only and should be used cautiously when referenced. \*\* UCR and population estimates outside of Queen Creek were taken from the 2018 FBI UCR website ([www.ucr.fbi.gov](http://www.ucr.fbi.gov)).*



# Maricopa County Sheriff's Office

## Town of Queen Creek 2019 Annual Law Enforcement Summary



UCR Part 1 - Property Crime Estimates*							
2018	Population	Buglary	Theft	Auto Theft	Arson	Total Property Crime:	Property crimes per 1,000 Persons
Chandler	255,986	658	4455	317	15	5430	21.2
Gilbert	247,463	406	2715	152	16	3273	13.2
Mesa	504,873	1563	7598	863	12	10024	19.9
Queen Creek	50,340	92	557	40	3	689	13.7
Scottsdale	254,961	711	4700	272	17	5683	22.3
Tempe	188,543	1017	6247	538	12	7802	41.4
2019							
Queen Creek	56,619	153	529	52	1	735	13

*\*Before determining the final UCR classification, investigation and analysis are required to determine the factual outcomes for each event. Therefore, the information presented in this report is an estimate only and should be used cautiously when referenced. \*\* UCR and population estimates outside of Queen Creek were taken from the 2018 FBI UCR website ([www.ucr.fbi.gov](http://www.ucr.fbi.gov)).*



# Maricopa County Sheriff's Office

Town of Queen Creek *2019 Annual Law Enforcement Summary*



- 2019 Review
  - Community Engagement
    - Contact with over 40,000 community members
  - Emergency Response Preparedness
  - Collaborative Partnerships
  - Traffic Enforcement Details
  - Directed Patrol Reporting



# Maricopa County Sheriff's Office

Town of Queen Creek *2019 Annual Law Enforcement Summary*



- 2020 Goals Objectives
  - Build on collaborative partnerships
  - Emergency preparedness
  - Increase strategies to address property crime
    - New home burglaries/thefts
    - Vehicle burglary/thefts
    - Assess community and staffing needs
  - Increase young adult/juvenile outreach



# Maricopa County Sheriff's Office

Town of Queen Creek *2019 Annual Law Enforcement Summary*

