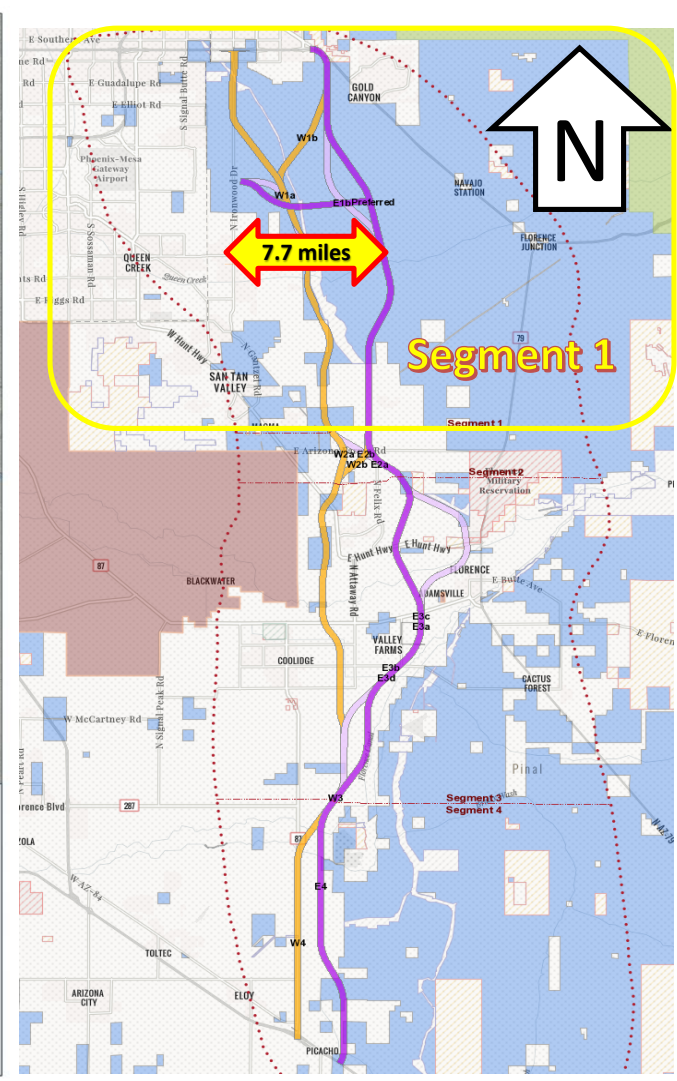
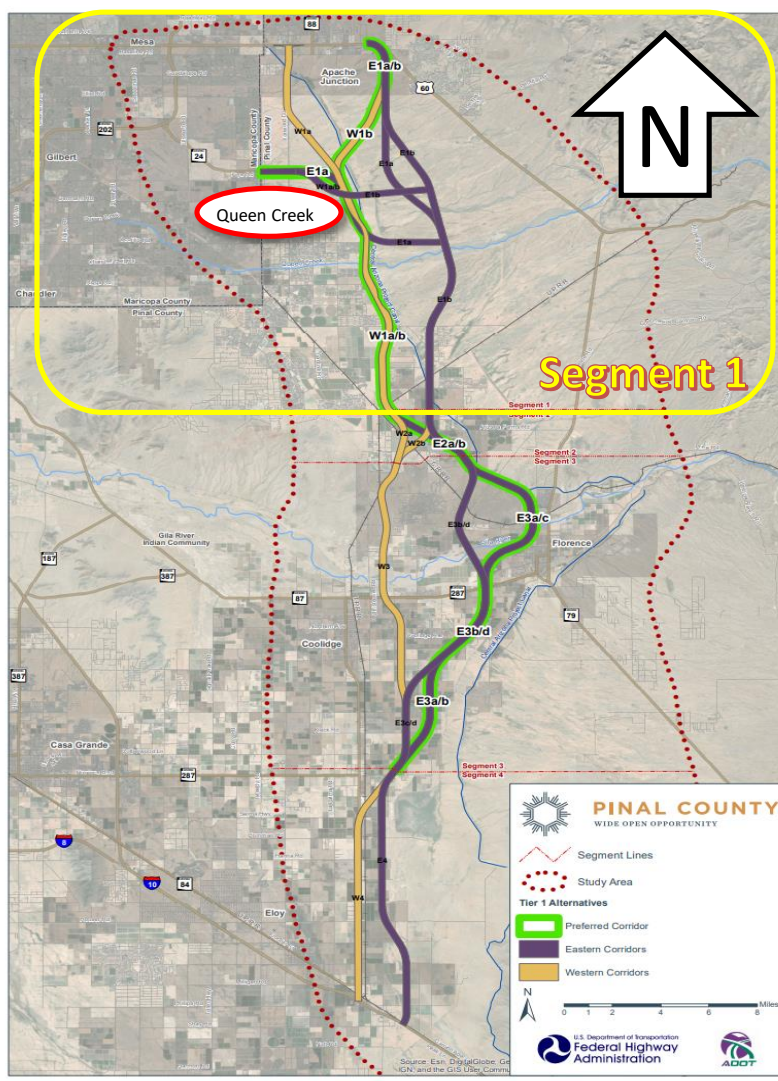


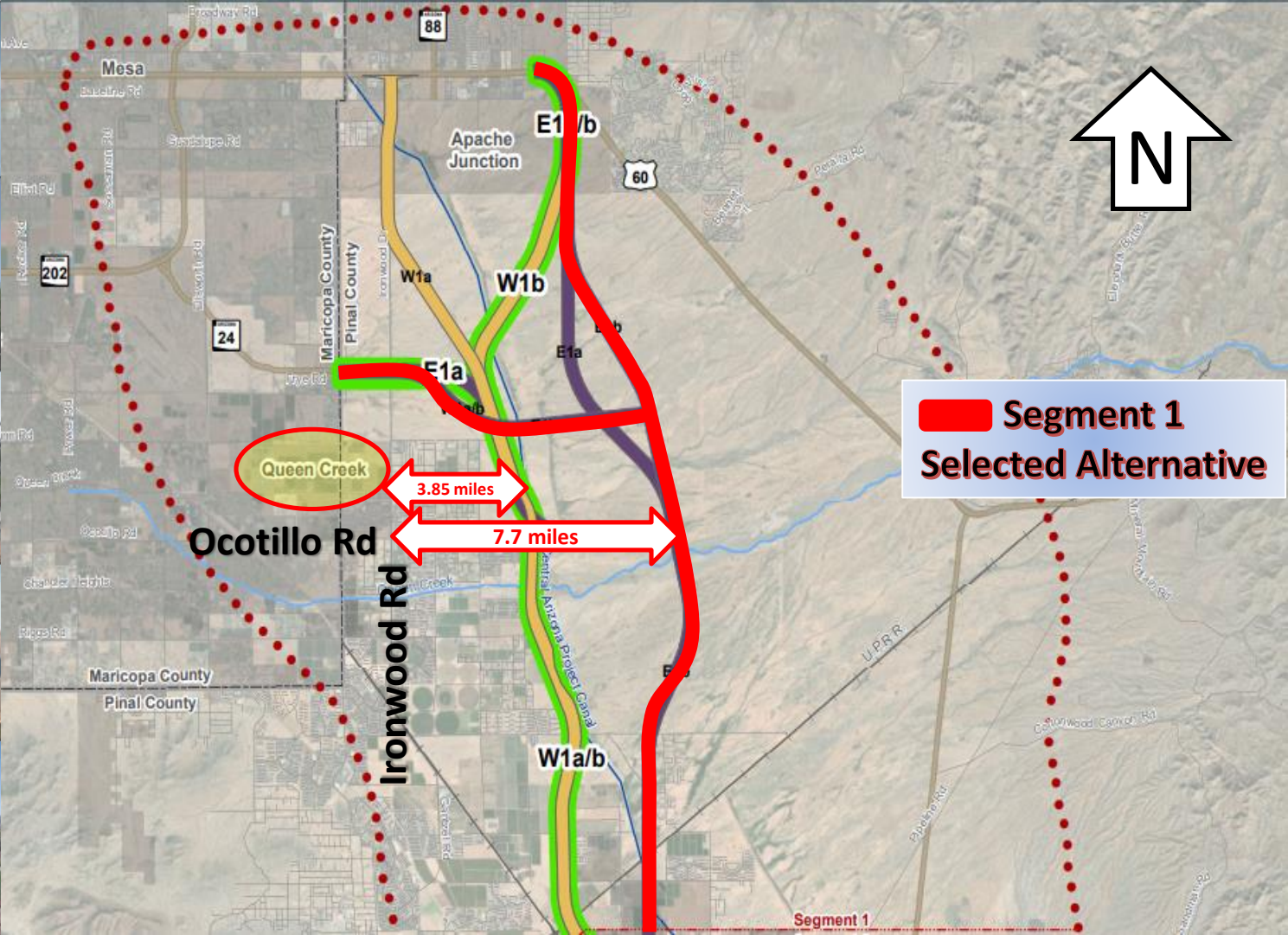


North-South Corridor Study Update

Heather Wilkey
Intergovernmental Relations Manager

Mohamed Youssef, MS, PE, PTOE
Deputy Public Works Director





Summary of Testimony shared at the Poston Butte Open House in San Tan Valley on October 15, 2019



- Inconsistency with regional planning processes surrounding building of freeways
 - Regional freeways running North-South are spaced approximately nine miles apart (ex: 101 to the 303, 101 to the I-17 or 51). The proposed North-South alignment would be over 30 miles away.
- Population growth in San Tan Valley vs. Superstition Vistas by 2040
 - Projected 129,000 people vs. 27,000 people
- Economic opportunities provided by existing population centers and future development activity at the Phoenix-Mesa Gateway Airport
- The proposed alignment ignores the will of the Pinal Regional Transportation Authority (PRTA) voters and does not provide any benefit to the majority of taxpayers funding the construction.
 - Approval of Propositions 416 & 417 in 2017.

Support to Date

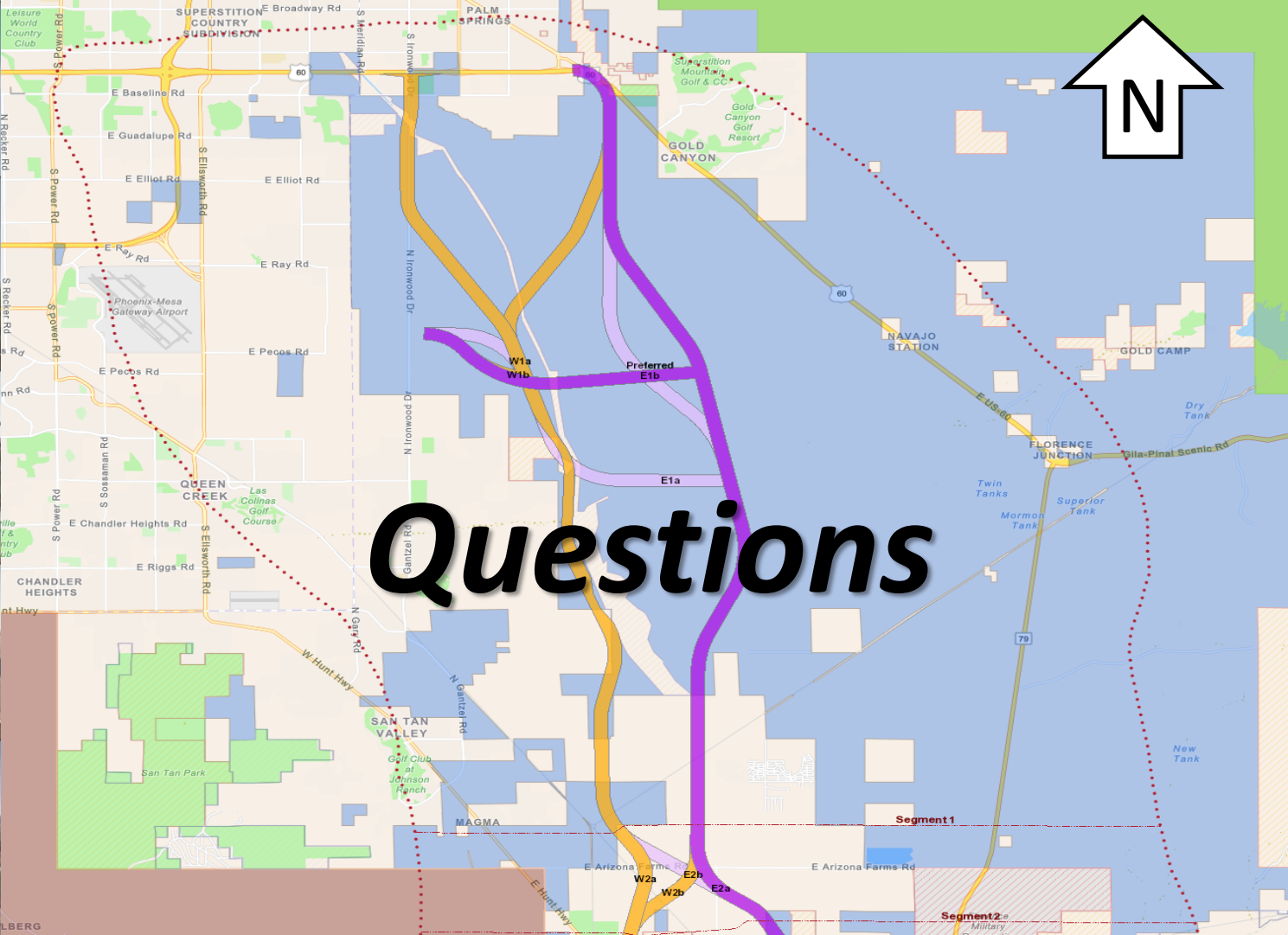


- Representative David Cook wrote letter and submitted testimony on our behalf at the hearing in Florence on October 1st
- Other possible legislative support from Senate President Karen Fann, Representative Warren Petersen & Senator David Farnsworth
- Working in coordination with Supervisor Mike Goodman, Pinal County
- Upcoming meeting with Supervisor Jack Sellers, Maricopa County
- Coordinating with Town of Florence & City of Apache Junction on technical submittal of comments

Next Steps

- Communications is assisting with social media efforts.
- Continue working with potential supporters of the Town's position.
- Submit technical comments by October 29th to northsouth@azdot.gov.





Questions



LBERG