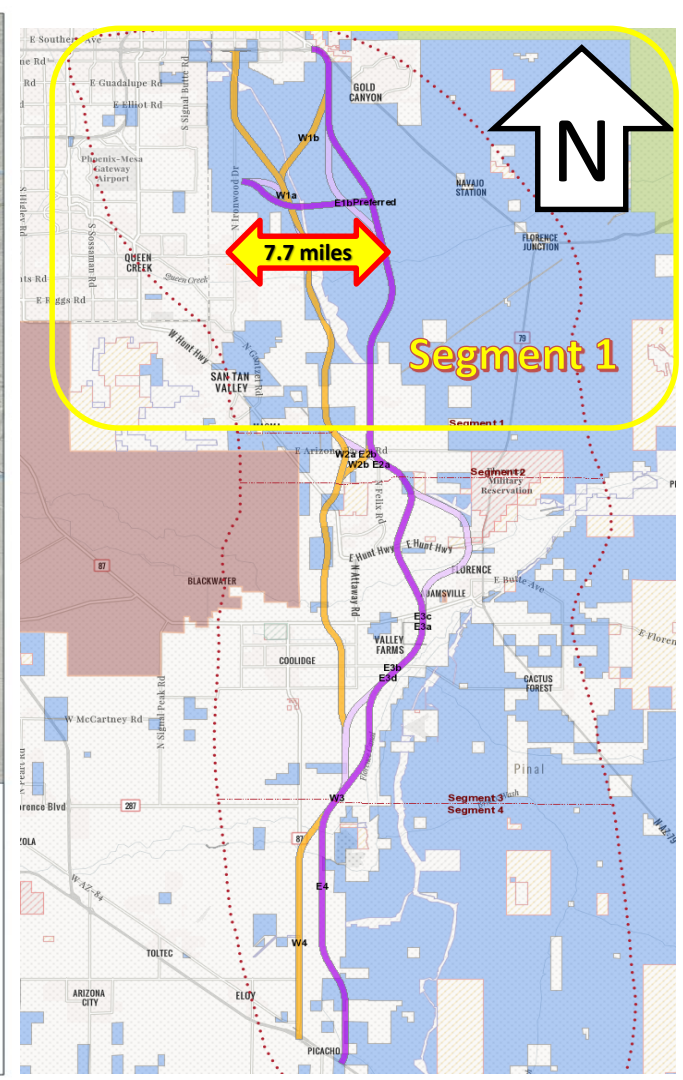
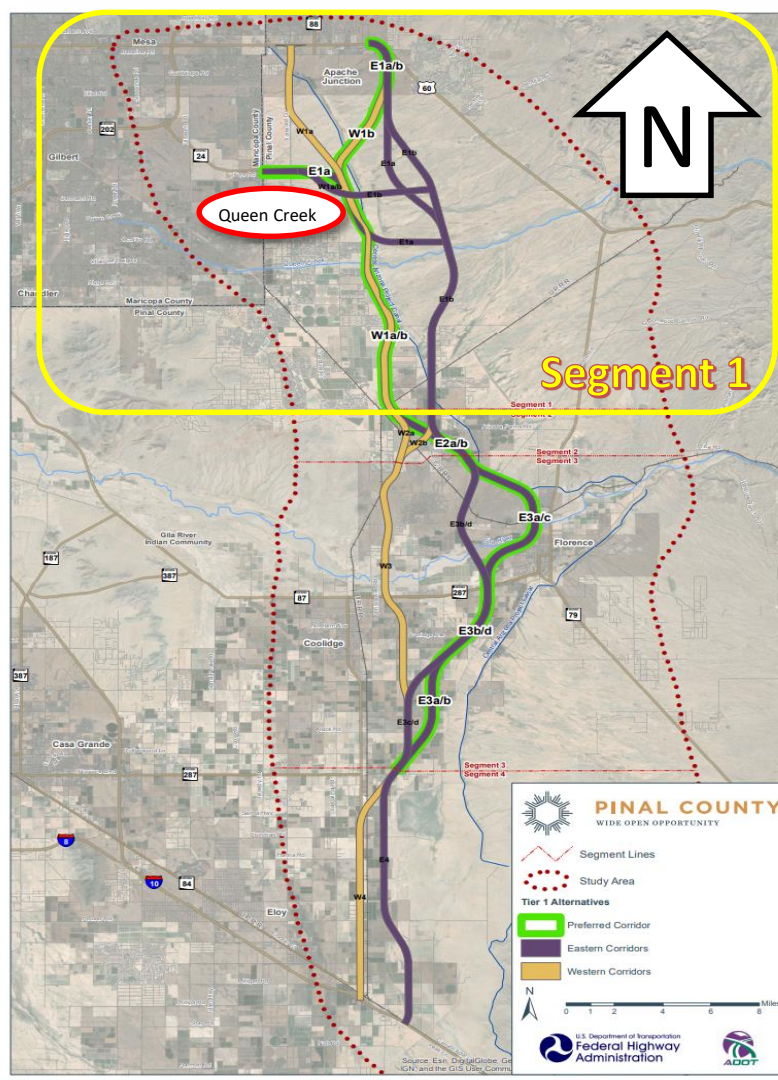
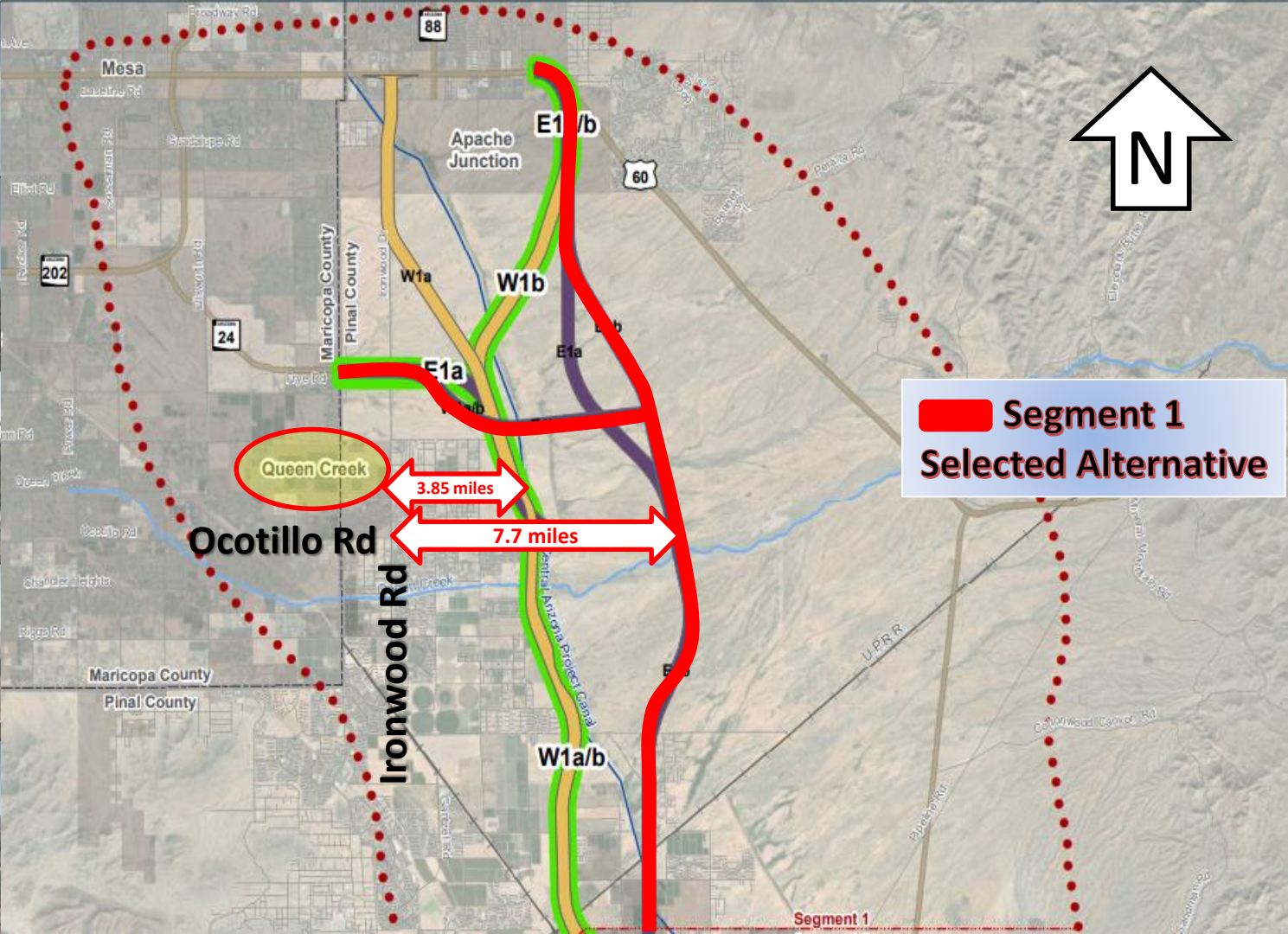
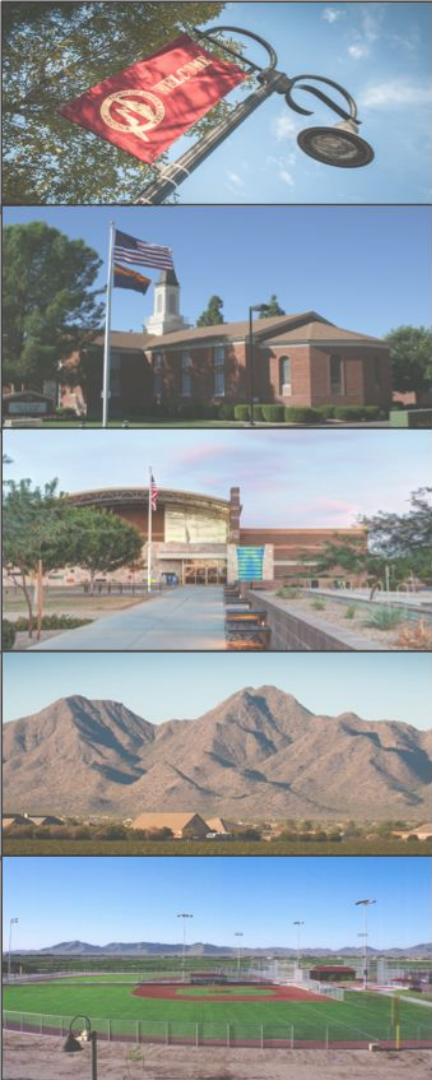




North-South Corridor Study Update

Mohamed Youssef, MS, PE, PTOE
Deputy Public Works Director





Preliminary Issues for Consideration with the Draft Tier I Environmental Impact Statement for the North-South Corridor



- The proposed alignment differs from the alignment incorporated into the Pinal Regional Transportation Authority (PRTA) Plan.
 - Approved by the voters on November 7, 2017
- The proposed corridor may not provide a reasonable benefit to the voters who approved the funding mechanism (PRTA tax).
 - Analysis of the intended transportation impacts over the course of the next 20 years is needed regarding the eastern vs. the western alternative.
- Promotion of future economic development
 - Economic impact studies have not been conducted and should account for future incorporated surrounding communities as well as the State Trust Land development.
- Decisions on the final alignment should account for community population projections as a result of the 2020 Census.

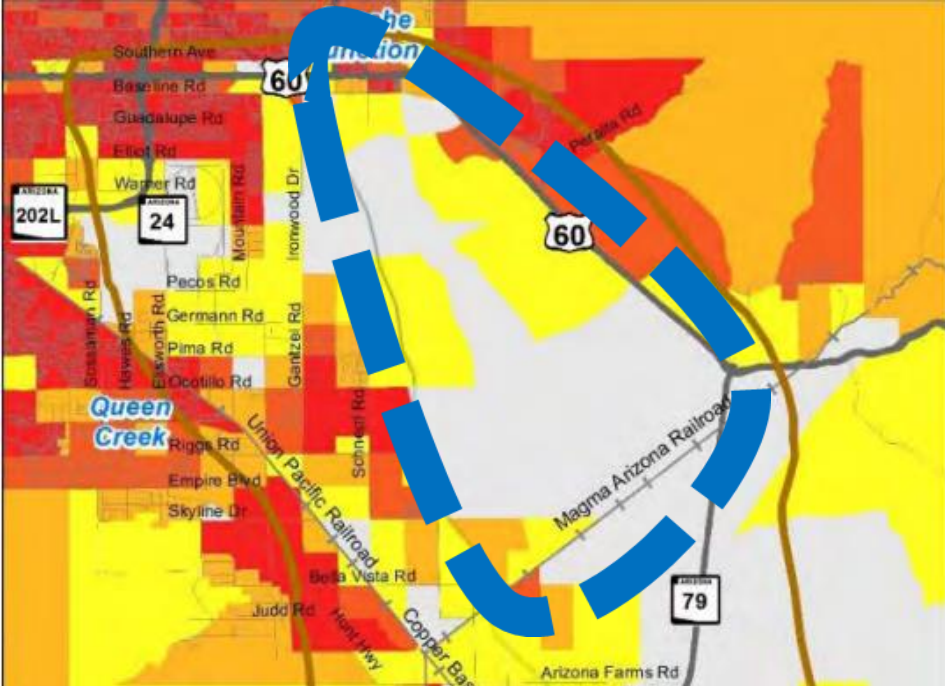
Preliminary Issues for Consideration with the Draft Tier I Environmental Impact Statement for the North-South Corridor



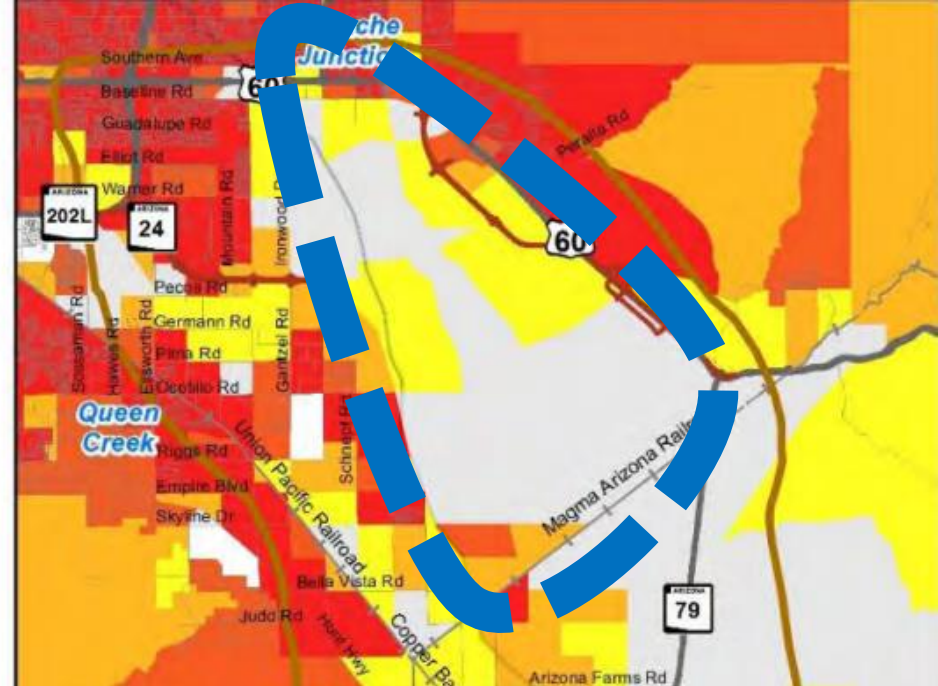
- Studies, such as the San Tan Valley Special Area plan, approved in 2018, do not appear to have been taken into consideration.
- Maricopa Association of Governments (MAG), San Tan Valley population projections

Year	2030	2050
Population	119,186	157,860

54% population increase in San Tan Valley over the next 34 years.



2015 Population



2040 Population

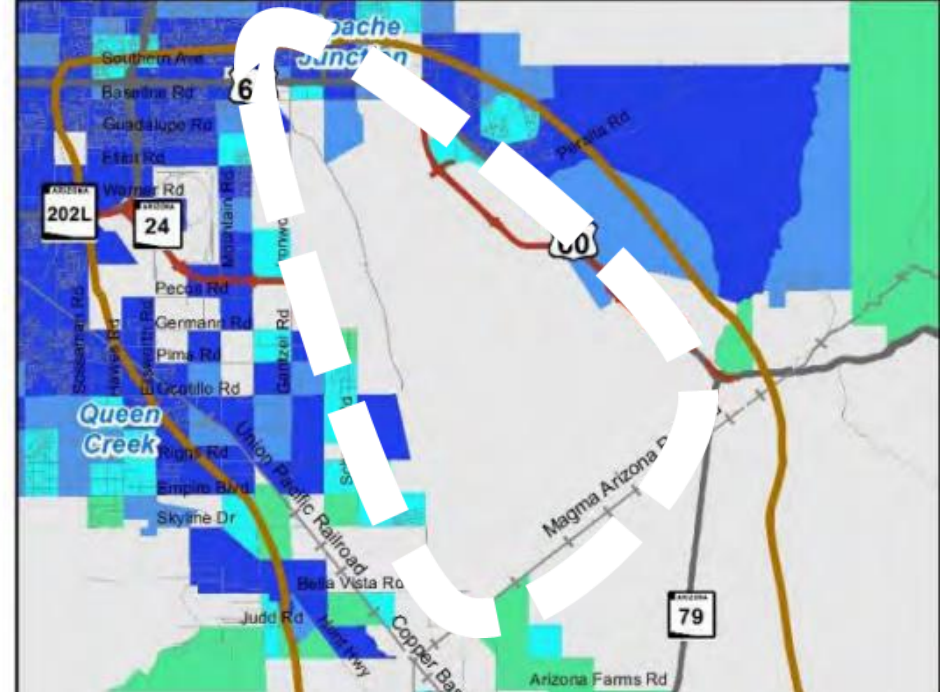
Segment 1

Legend

- Railroads
 - Interstate Highway
 - U.S. / State Highways and Freeways
 - Local Roadway
 - North-South Corridor Study Area
 - SR 24 and US 60 approved alignment
- | Population | |
|------------|------------|
| | 0 |
| | 1 - 99 |
| | 100 - 599 |
| | 601 - 1999 |
| | > 1999 |

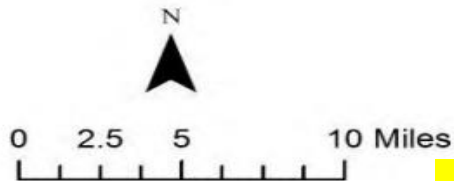


2015 Employment



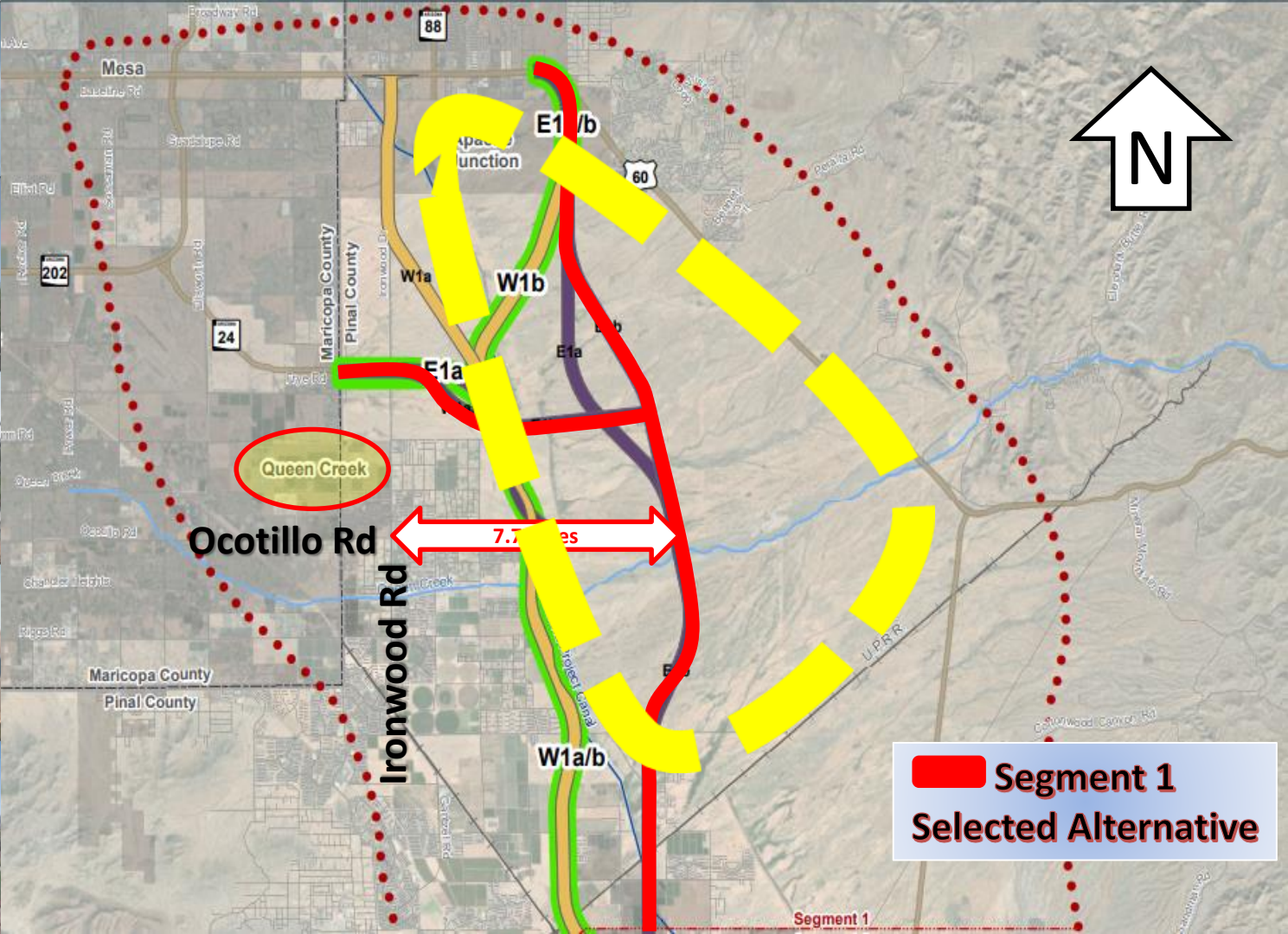
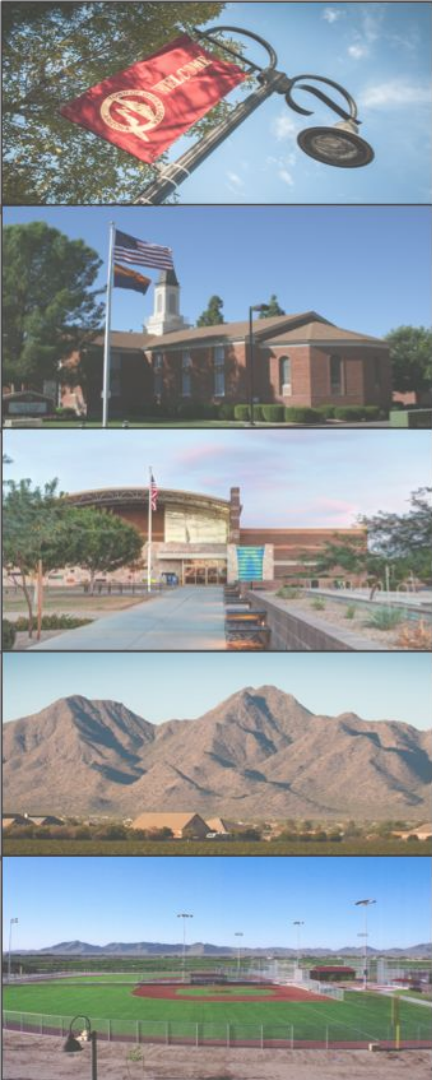
2040 Employment

Segment 1



Legend

- | | | |
|--|------------------------------------|-------------------|
| | Railroads | Employment |
| | Interstate Highway | 0 |
| | U.S. / State Highways and Freeways | 1 - 50 |
| | Local Roadway | 51 - 200 |
| | North-South Corridor Study Area | 201 - 400 |
| | SR 24 and US 60 Approved Alignment | > 400 |



Segment 1
Selected Alternative

Segment 1



Schedule and Next Steps

- Public and stakeholder review of the Draft Tier 1 DEIS (through October 29, 2019)
- Public Hearings
 - Tuesday, Oct. 1**
5:30 to 7:30 p.m.
Florence High School
1000 S. Main St.
Florence
 - Thursday, Oct. 10**
5:30 to 7:30 p.m.
Eloy City Hall
595 N. C St.
Eloy
 - Tuesday, Oct. 15**
5:30 to 7:30 p.m.
Poston Butte High School
32375 N. Gantzel Road
San Tan Valley
- Study team reviews and responds to comments
- Preparation of the FEIS/ROD (anticipated completion late 2020)

