



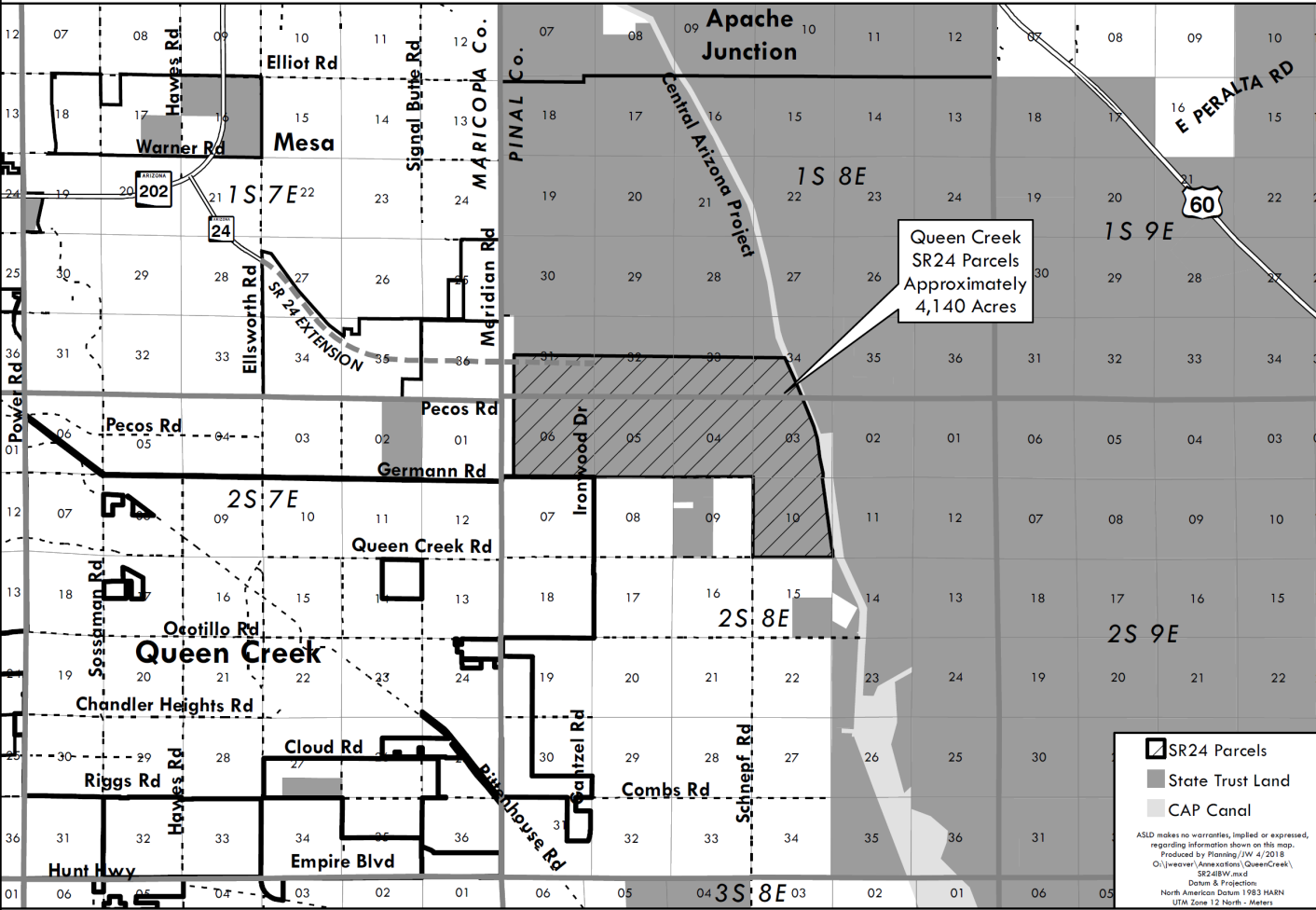
Arizona State Land Department Annexation

Case: P19-0115

Public Hearing—No Action

July 17, 2019

PROPOSED ANNEXATION: Queen Creek SR24 Parcels



ARIZONA STATE SELECTION BOARD
APPROVAL OF PROPOSED ANNEXATION

On this 11th day of June 2018 the Arizona State Selection Board has given due consideration and does hereby approve the proposed annexation of State lands, as described in Attachment A and depicted in Attachment B, into the incorporated boundaries of the Town of Queen Creek.

Douglas A. Ducey
DOUGLAS A. DUCEY
Governor, State of Arizona

MARK BRNOVICH
Attorney General, State of Arizona

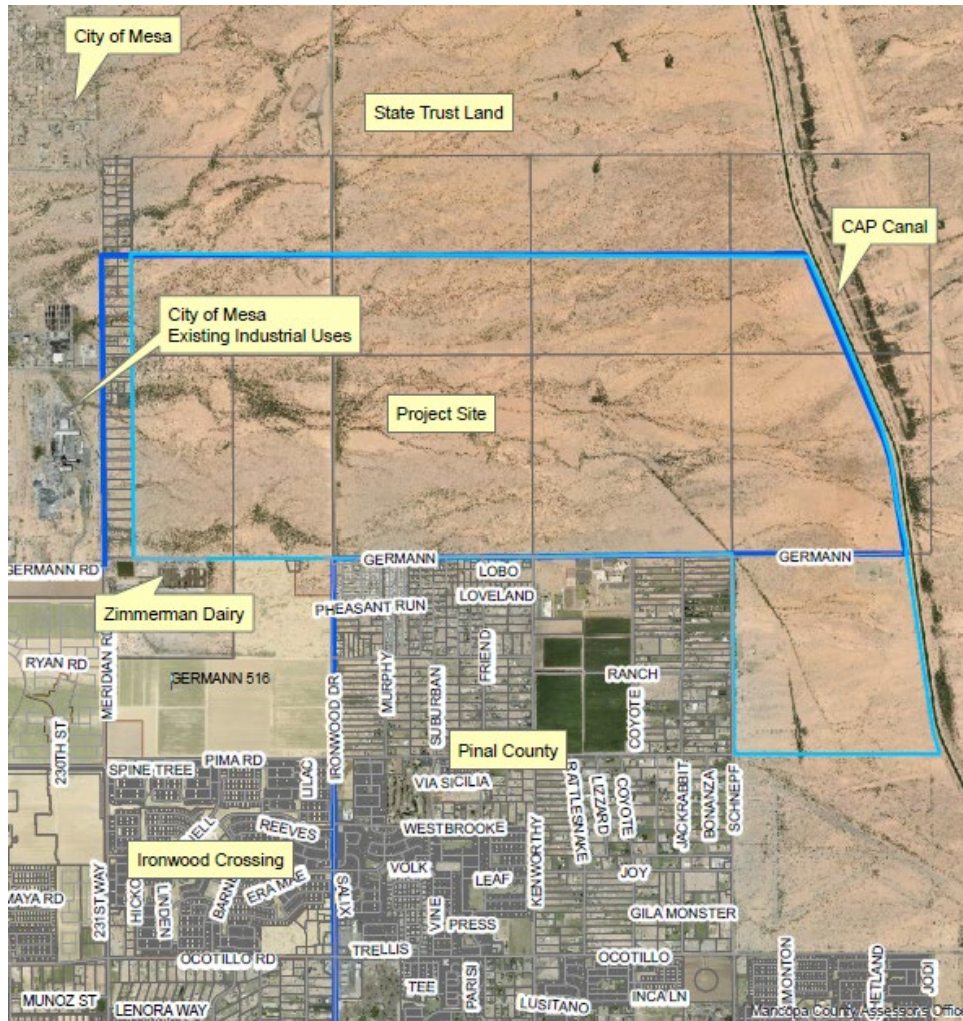
Eileen Klein
EILEEN KLIN
Treasurer, State of Arizona

Attest: *Michelle Reagan* 6/11/18
Secretary of State Date



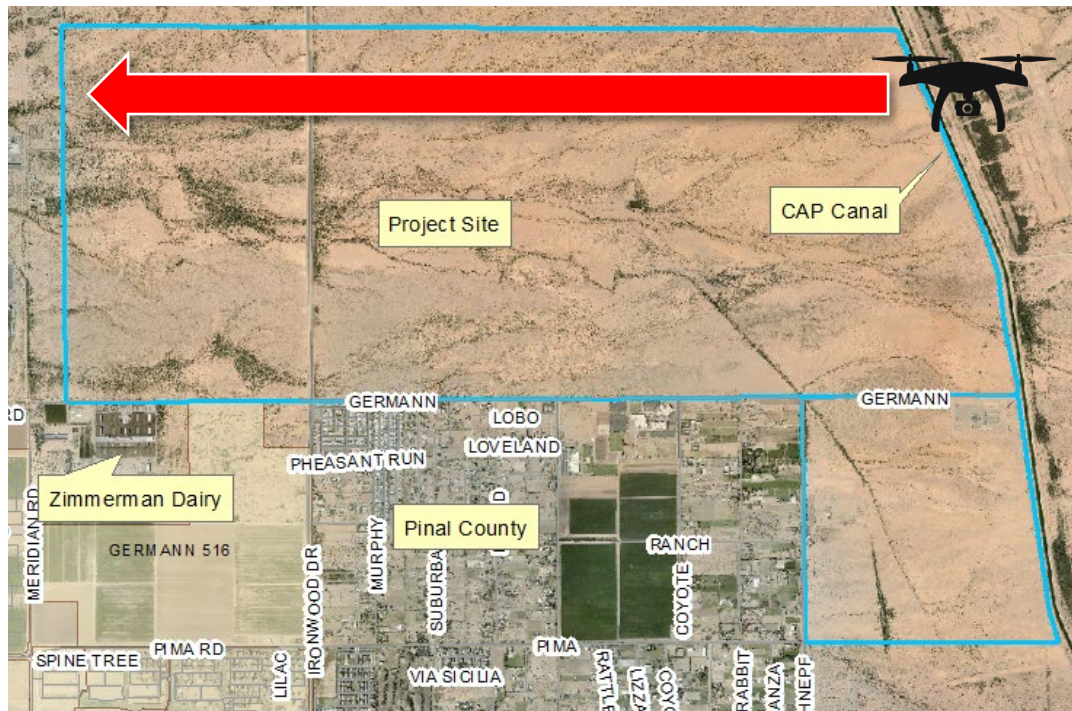
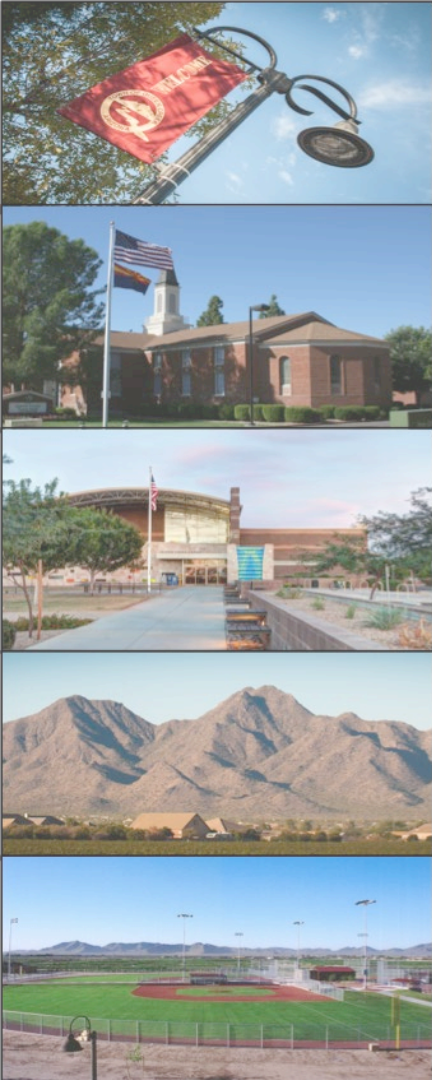
- SR24 Parcels
- State Trust Land
- CAP Canal

ASLD makes no warranties, implied or expressed, regarding information shown on this map.
Produced by Planning/JW 4/2018
C:\jweaver\Annexation\QueenCreek\SR24SRV.mxd
Datum & Projection:
North American Datum 1983 NAD83
UTM Zone 12 North - Meters



Aerial Photo Exhibit





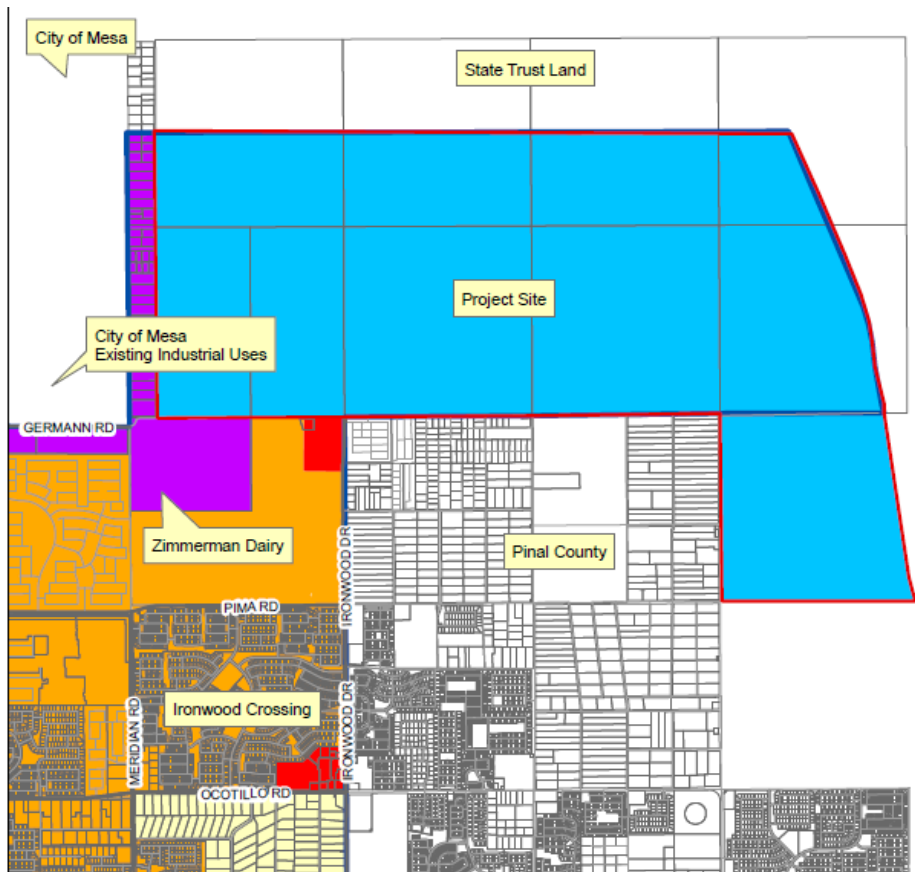
Overhead
Footage
Facing South



Request

- July 11, 2018—State Selection Board approved annexation
- April 17, 2019-Town Council approved Pre-Annexation Development Agreement
- 4,136 acres



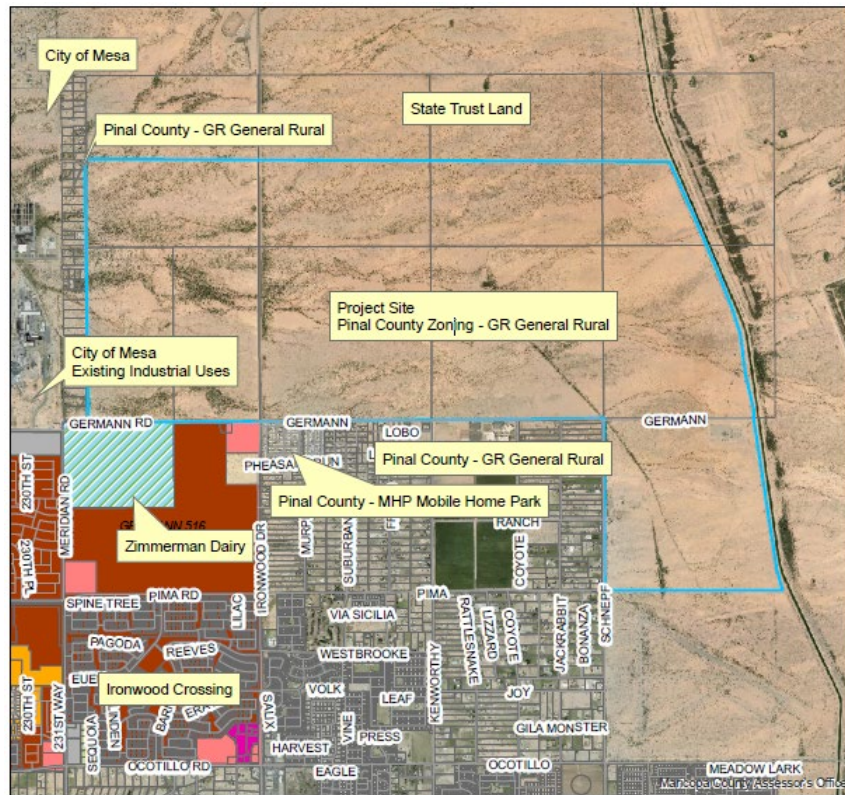


General Plan Land Use

- | | | | |
|--------------------|--------------------|------------|------------|
| Special District 1 | Special District 2 | Urban | Open Space |
| Special District 4 | Rural | Commercial | |
| Special District 3 | Neighborhood | Industrial | |

**General Plan
Exhibit**





Existing Zoning Exhibit

Proposed equivalent zoning R1-43

Zoning Districts

C-1 - Commercial	PQP - Public/Quasi-Public	R1-7 - Residential	R1-35 - Residential
C-2 - Commercial	RC - Recreation/Conservation	R1-8 - Residential	R1-43 - Residential
C-3 - Commercial	MDR - Residential	R1-9 - Residential	R1-54 - Residential
TC - Commercial	R1-4 - Residential	R1-12 - Residential	R1-190 - Residential
EMP A - Office/Industrial Park	R1-5 - Residential	R1-15 - Residential	PCD - Planned Community
EMP B - General Industrial	R1-6 - Residential	R1-18 - Residential	AT - Agritainment



Annexation Timeline

Arizona State Land Department Annexation Timeline

Steps	Date	Tasks
Step 1	June 3, 2019	Request property owner and assessed valuation information from Pinal County Assessor and Arizona Department of Revenue.
Step 2	June 20, 2019	Record blank petition, map, and legal description with Pinal County Assessor. The 30-day waiting period begins.
Step 3	June 25, 2019	Post the Property for the Public Hearing.
Step 4	June 18, 2019	Prepare legal advertisements and publish notice of Public Hearing in the newspaper.
Step 5	July 10, 2019	Mail notice of public hearing to property owners and the Chairman of the Pinal County Board of Supervisors.
Step 6	July 17, 2019	Public Hearing at the Town Council Meeting to discuss the annexation proposal.
Step 7	July 19 , 2019	30-day waiting period ends. The Applicant will begin collecting signatures.
Step 8	Aug. 7, 2019	Consider Adopting Ordinance at a future Town Council Meeting.
Step 9	30 days later	Record Ordinance and signed petitions.





Questions?

Thank you.