

Soaring to New Heights



January 16, 2019



Phoenix-Mesa Gateway Airport



Gateway Airport Route Map

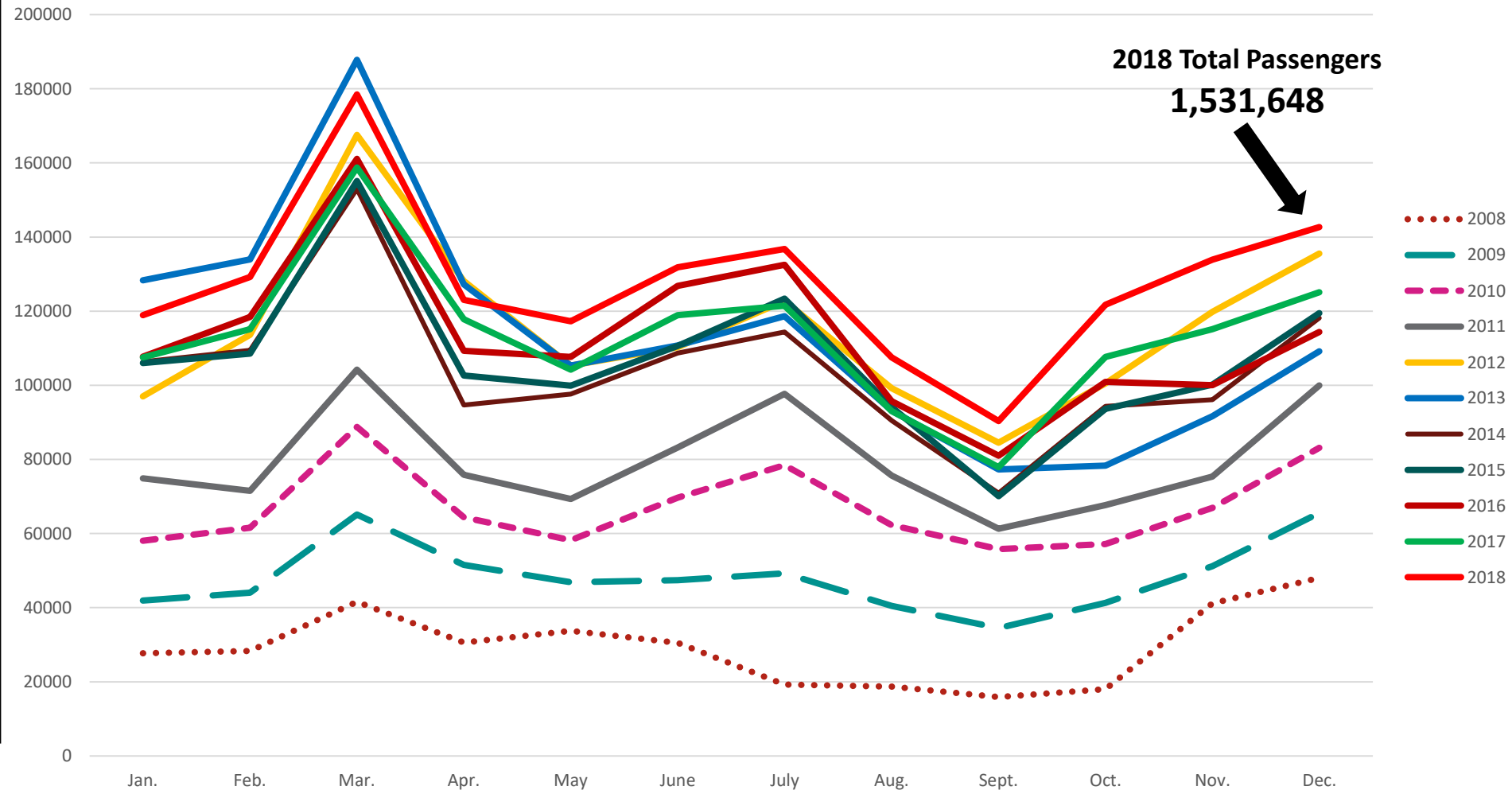


50 Domestic and International Destinations

Record-Setting Passenger Activity



Calendar Year Passenger Activity



2018 Community Noise Calls



Location	Calendar Year 2017	
	Callers	Calls
Mesa	42	176
Gilbert	94	273
Gold Canyon	6	6
Queen Creek	12	19
Queen Valley	1	1
San Tan Valley	5	5
Florence	1	1
Apache Junction	2	2
Unknown	3	4
TOTAL	166	487

Location	Calendar Year 2018	
	Callers	Calls
Mesa	53	86
Gilbert	34	174
Gold Canyon	2	2
Queen Creek	14	18
Queen Valley	2	2
San Tan Valley	2	2
Florence	0	0
Apache Junction	0	0
Unknown	0	0
TOTAL	107	284

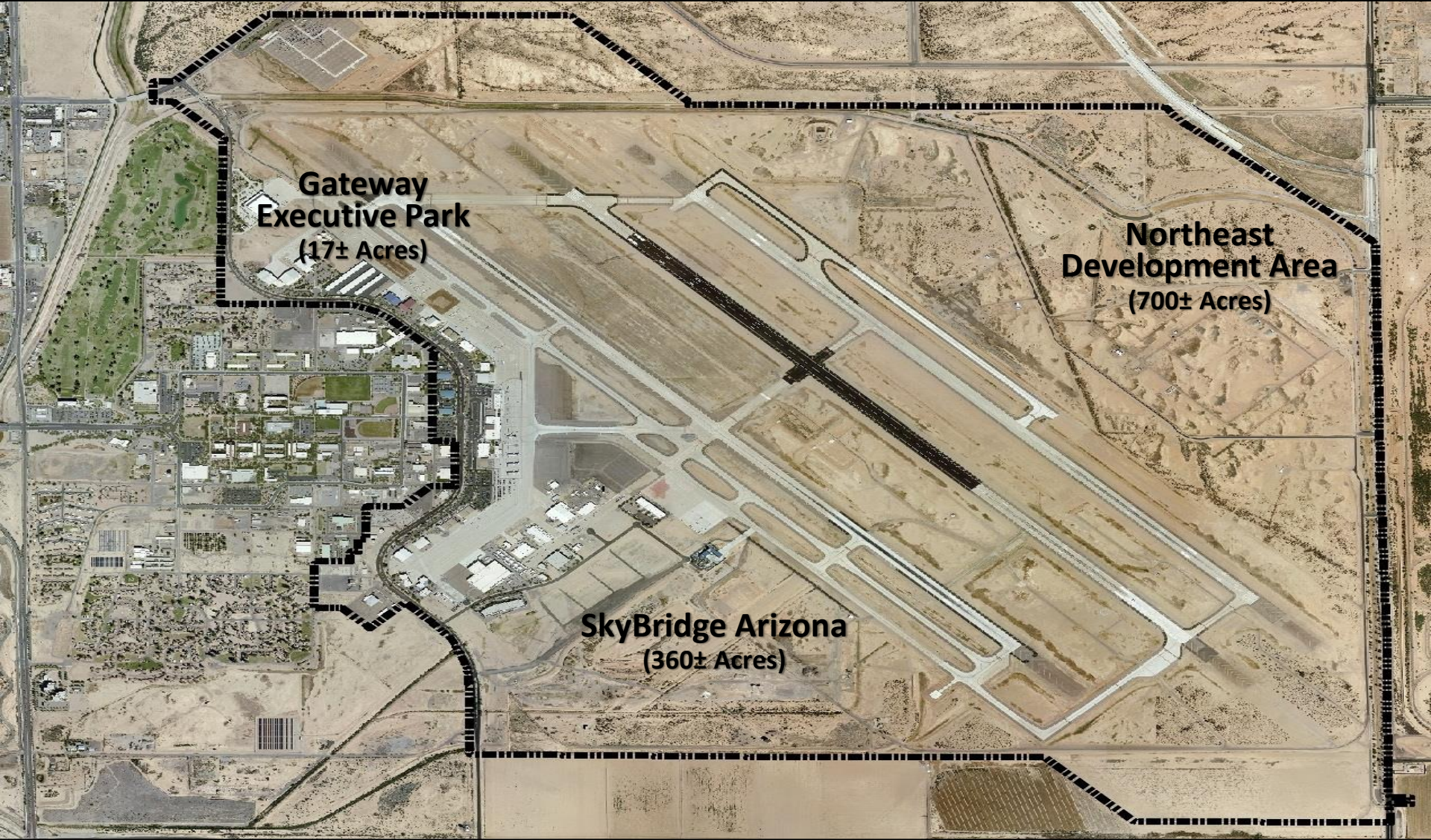
Development Opportunities



**Gateway
Executive Park**
(17± Acres)

**Northeast
Development Area**
(700± Acres)

SkyBridge Arizona
(360± Acres)



Hangar 37 Development



Hangar 18 Development



Able Aerospace Services Expansion



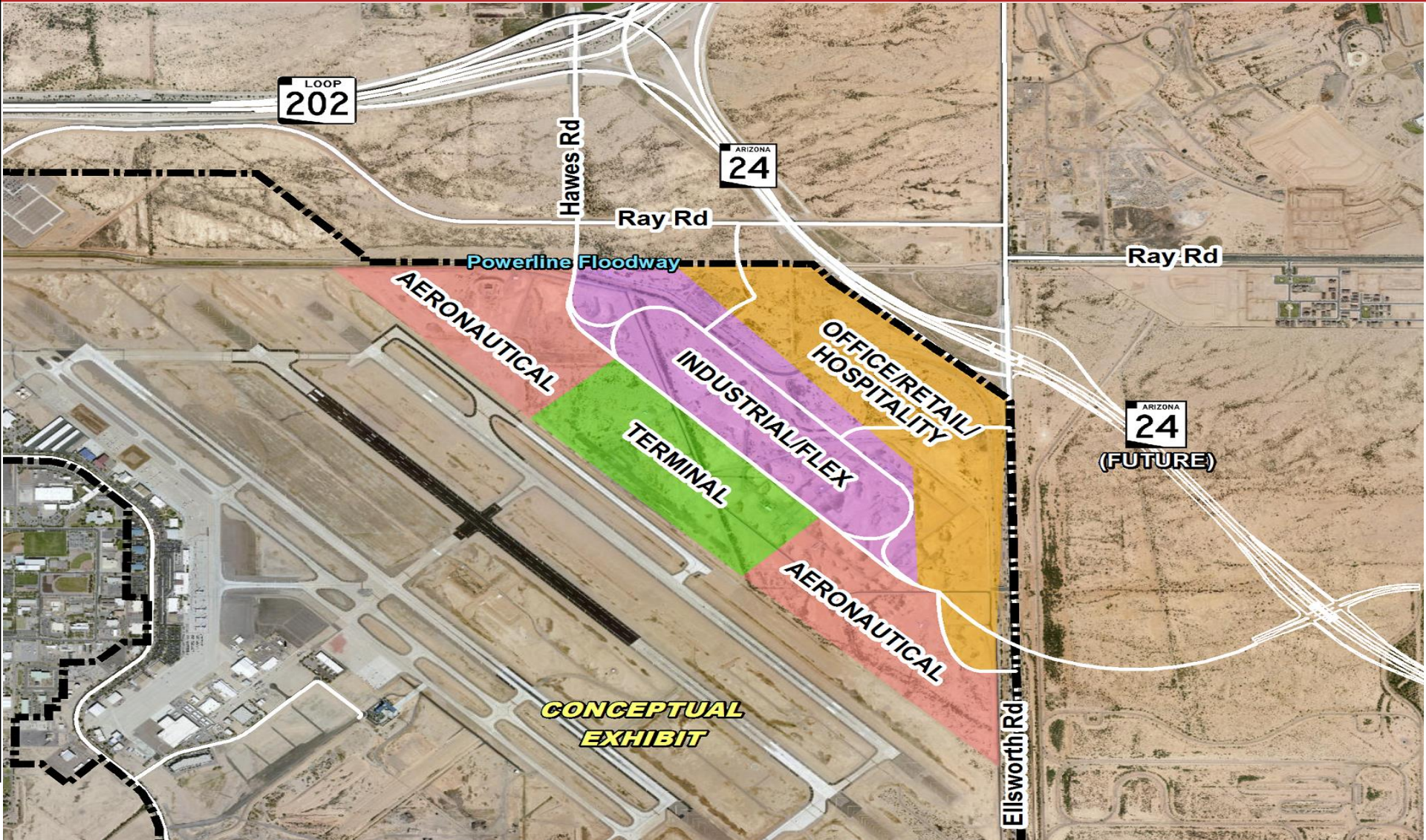
FBO Renovations



GATEWAY AVIATION SERVICES



Northeast Development Area



SkyBridge Arizona Overview



SkyBridge Arizona Overview

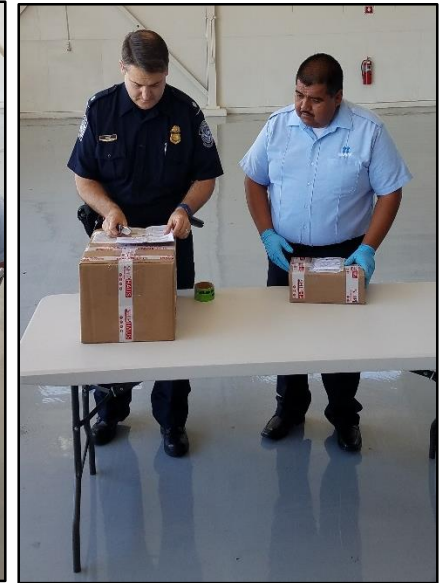


- Master Development Agreement (MDA) for approximately 360-acres located at the southwest corner of Phoenix-Mesa Gateway Airport
- Master Developer, Mesa SkyBridge, LLC, has 49-year lease and is committed to investing \$40 million in horizontal infrastructure
- Aeronautical and non-aeronautical development opportunities including logistics/cargo, office, warehouse, flex industrial, hospitality, and retail
- Millions of square feet of construction and thousands of new high-wage jobs expected
- Unified Cargo Processing Program created first joint US and Mexico International Air Logistics Hub

Unified Cargo Processing Program



- May 21, 2018 - first joint U.S./ Mexico customs inspection
- September 18, 2018 - Mexican Customs official permanently relocated to Phoenix-Mesa Airport to provide full-time joint inspections
- First based SkyBridge Arizona cargo aircraft planned for Q2 2019
- Aggressively marketing Unified Cargo Processing services to e-commerce companies and manufacturers
- Additional inspections scheduled for Q1 2019



Questions?



PhxMesa
Gateway
Airport

