



COMPLETE FIRE

REZONE
P18-0034

Town Council
November 7, 2018

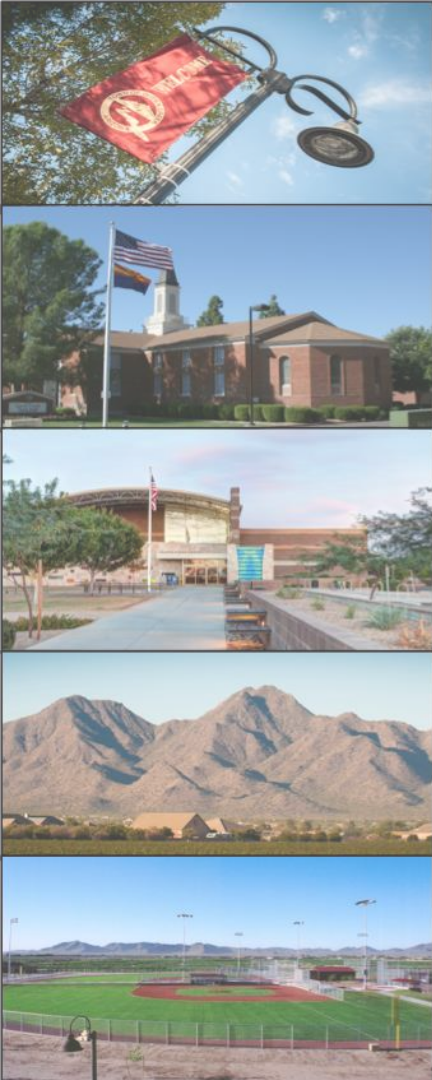




Aerial Map

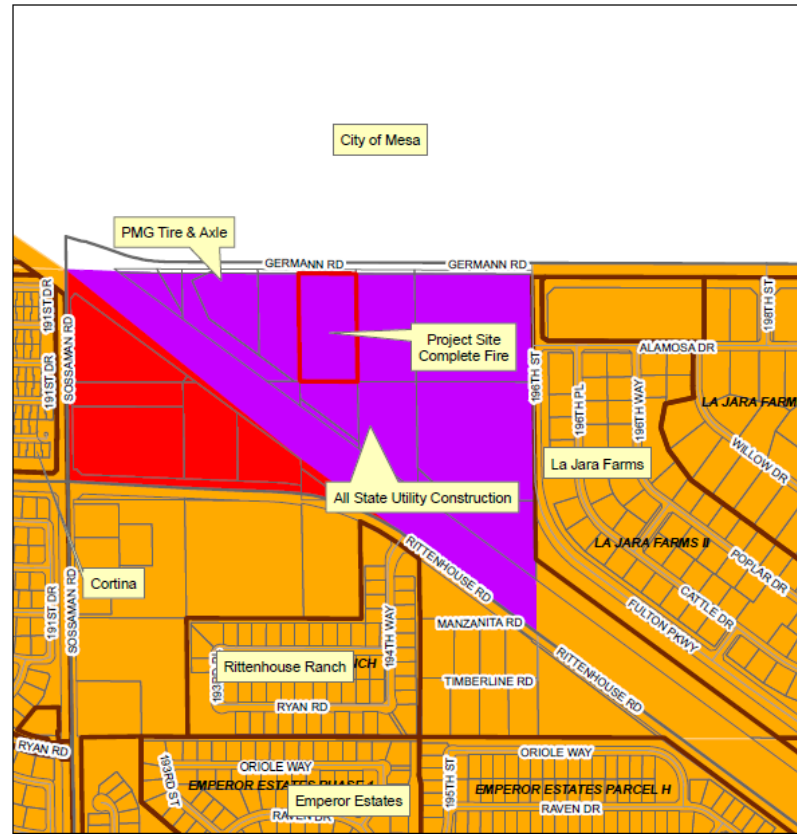
- 5.0 Acres





Existing General Plan Exhibit

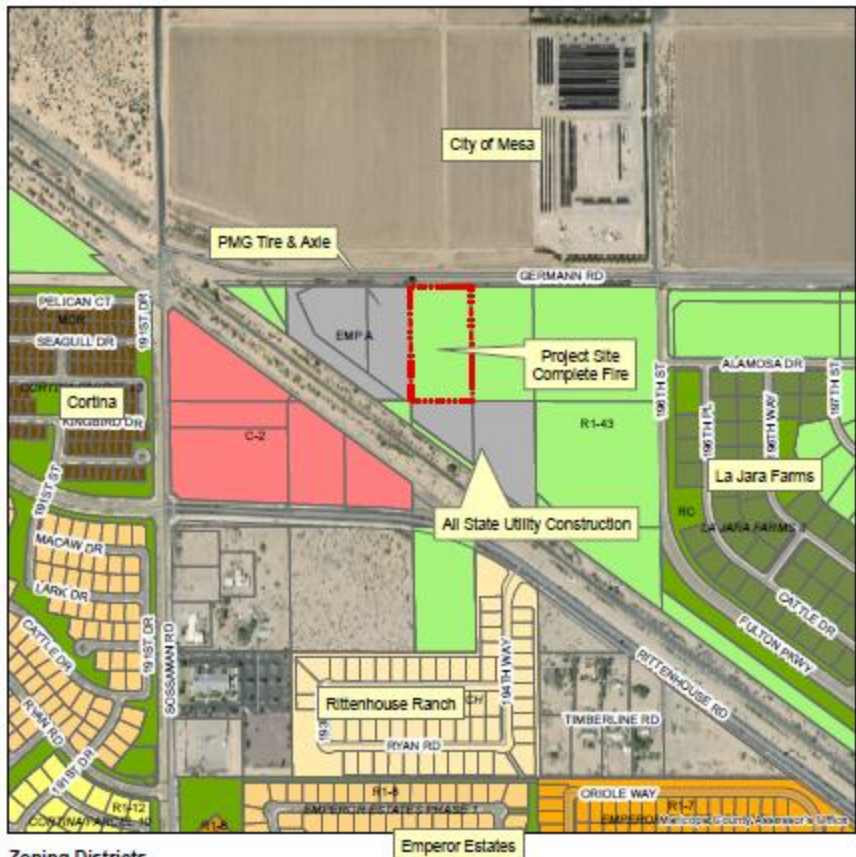
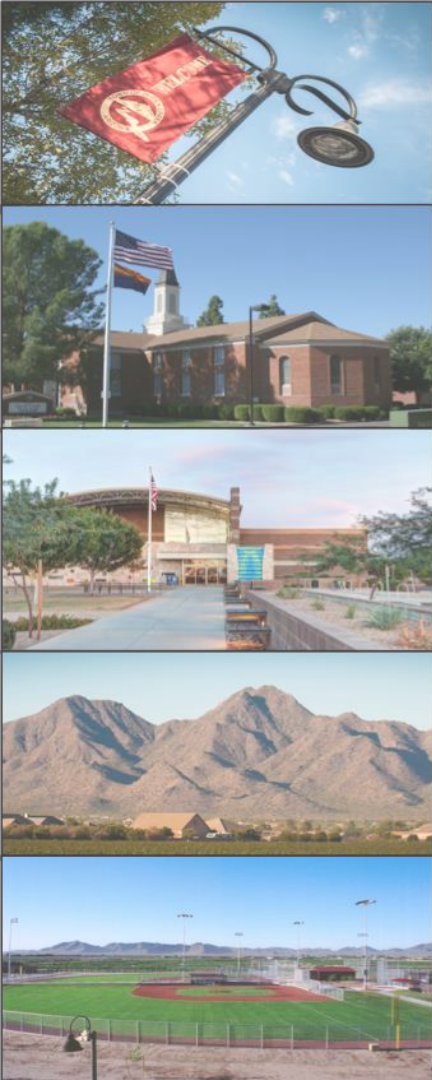
- Industrial



General Plan Land Use

Rural	Commercial	Special District 1	Special District 4
Neighborhood	Industrial	Special District 2	
Urban	Open Space	Special District 3	



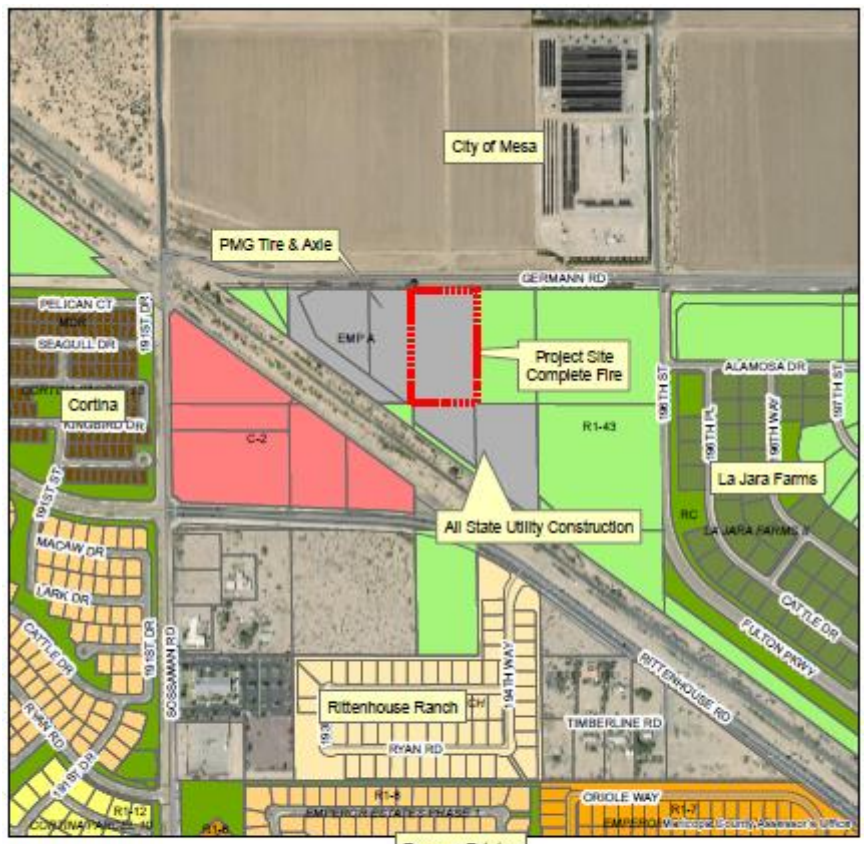
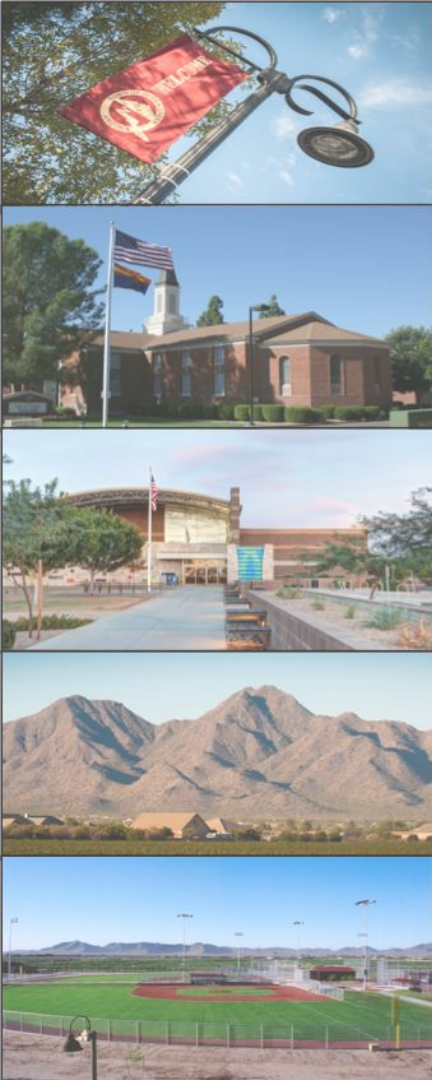


Zoning Districts

C-1, Commercial	RC, Recreation/Conservation	R1-7, Residential	R1-18, Residential
C-2, Commercial	PCD, Planned Community Development	R1-8, Residential	R1-35, Residential
TC, Commercial	MDR, Multi-Family	R1-9, Residential	R1-43, Residential
EMP A, Heavy Industrial	R1-4, Residential	R1-10, Residential	R1-54, Residential
EMP B, Light Industrial	R1-5, Residential	R1-12, Residential	R1-190, Residential
PQR, Public/Quash-Public	R1-6, Residential	R1-15, Residential	Aerials 2018

Existing Zoning

- R1-43 (Rural Estate District)
- 1 du/ac



Zoning Districts

C-1, Commercial	RC, Recreation/Conservation	R1-7, Residential	R1-18, Residential
C-2, Commercial	PCD, Planned Community Development	R1-8, Residential	R1-35, Residential
TC, Commercial	MDR, Multi-Family	R1-9, Residential	R1-43, Residential
EMP-A, Heavy Industrial	R1-4, Residential	R1-10, Residential	R1-54, Residential
EMP-B, Light Industrial	R1-5, Residential	R1-12, Residential	R1-190, Residential
PQR, Public/Quasi-Public	R1-6, Residential	R1-15, Residential	Aerials 2018

Proposed Zoning

- EMP-A (Office/Industrial Park)

NEIGHBORHOOD AND PLANNING COMMISSION MEETINGS

- Neighborhood Meeting: June 21, 2018—no attendees
- Planning Commission: Oct. 10, 2018, Approved 5-0
(no public comments)





Questions?

Thank you.