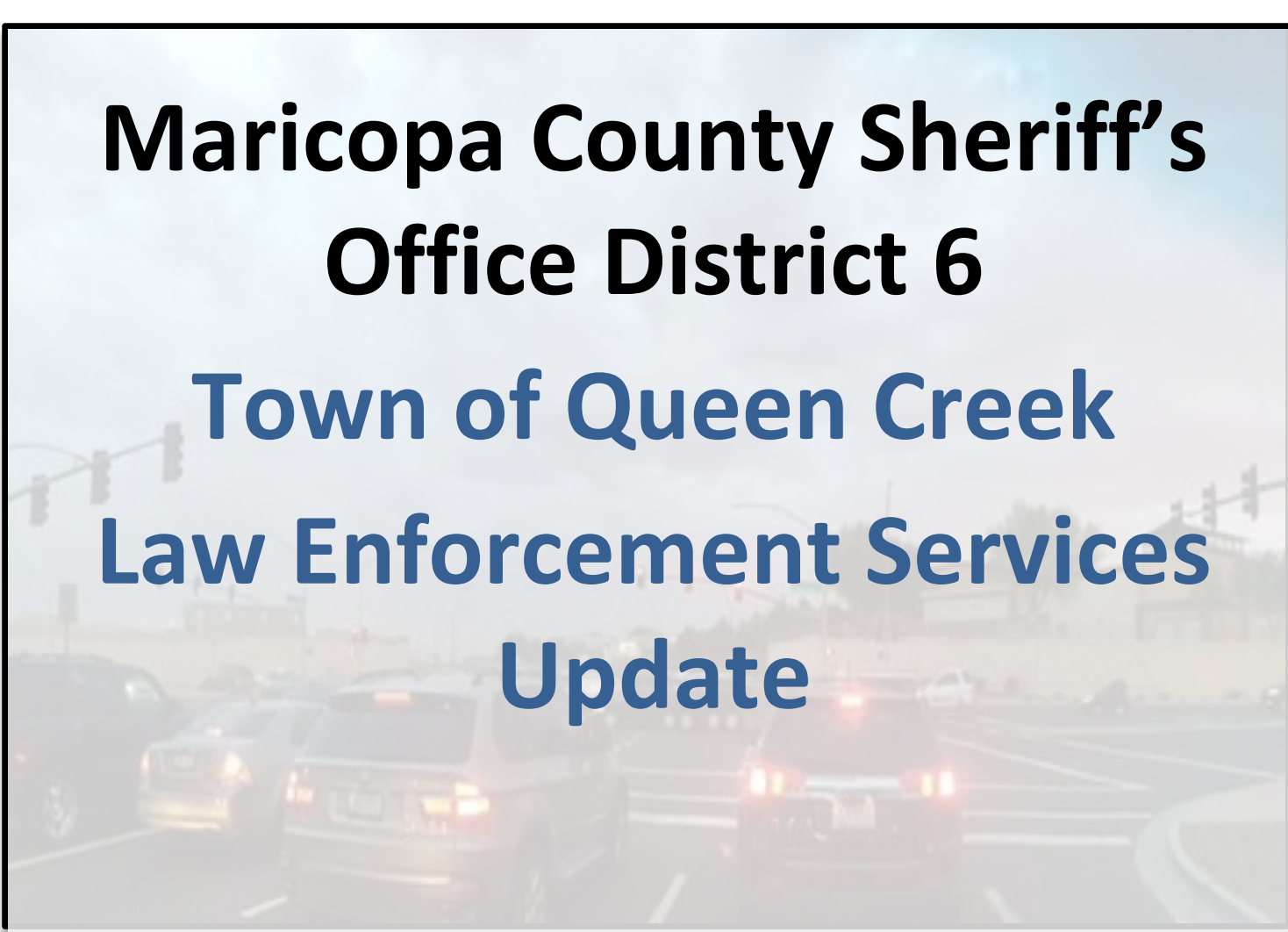




# **Maricopa County Sheriff's Office District 6**

## **Town of Queen Creek Law Enforcement Services Update**





# Council Strategic Planning Session

- Growth and Development Implications
- Traffic Initiative Status/Update
- Community Policing Strategies
- Directed Patrol



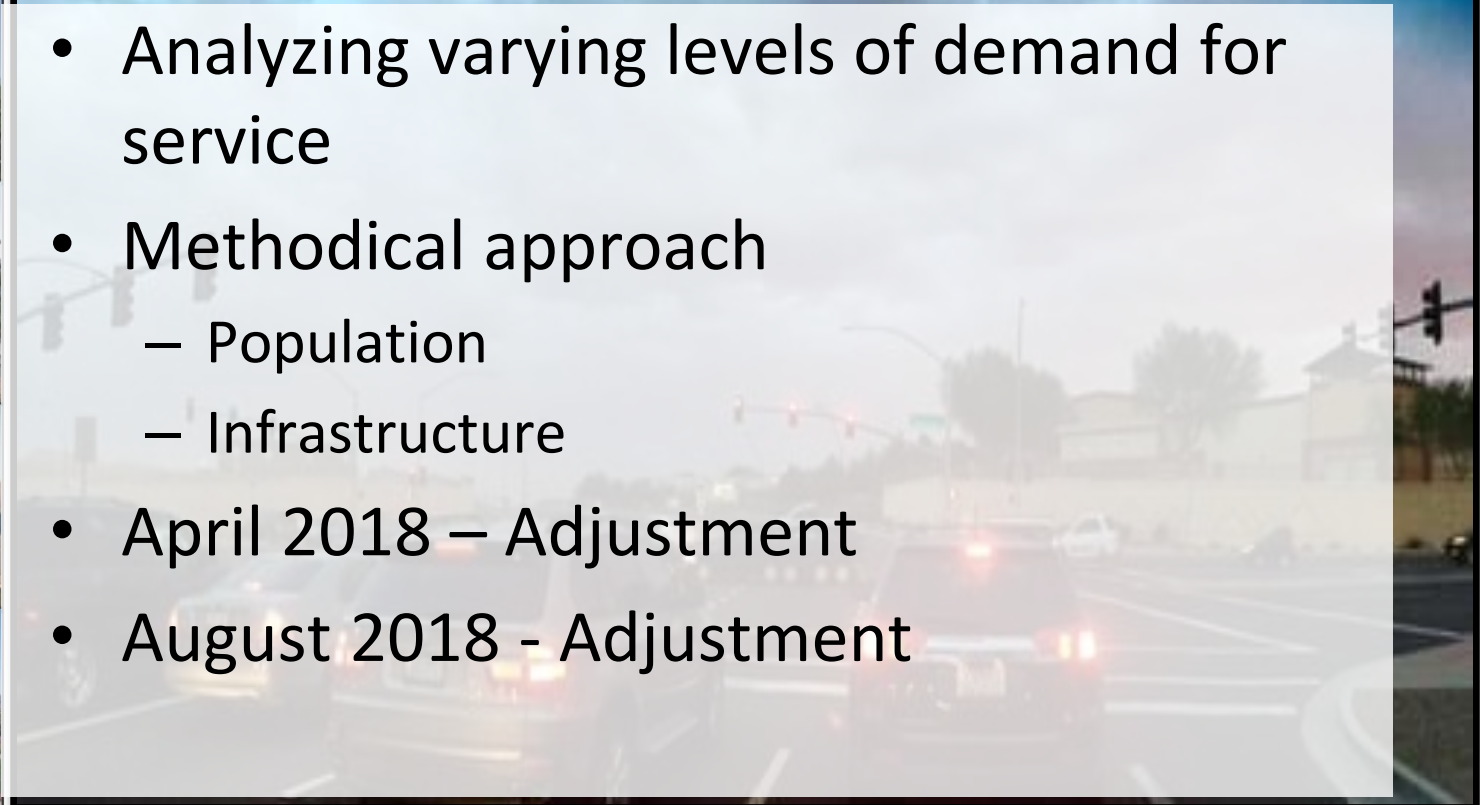
# Growth and Development

- Goals:
  - Queen Creek Law Enforcement Services
  - Evaluation on current resources and demand for service
  - Maintaining the current level of service
  - Identify future desired outcomes



# Growth and Development

- Analyzing varying levels of demand for service
- Methodical approach
  - Population
  - Infrastructure
- April 2018 – Adjustment
- August 2018 - Adjustment





# Traffic Initiative

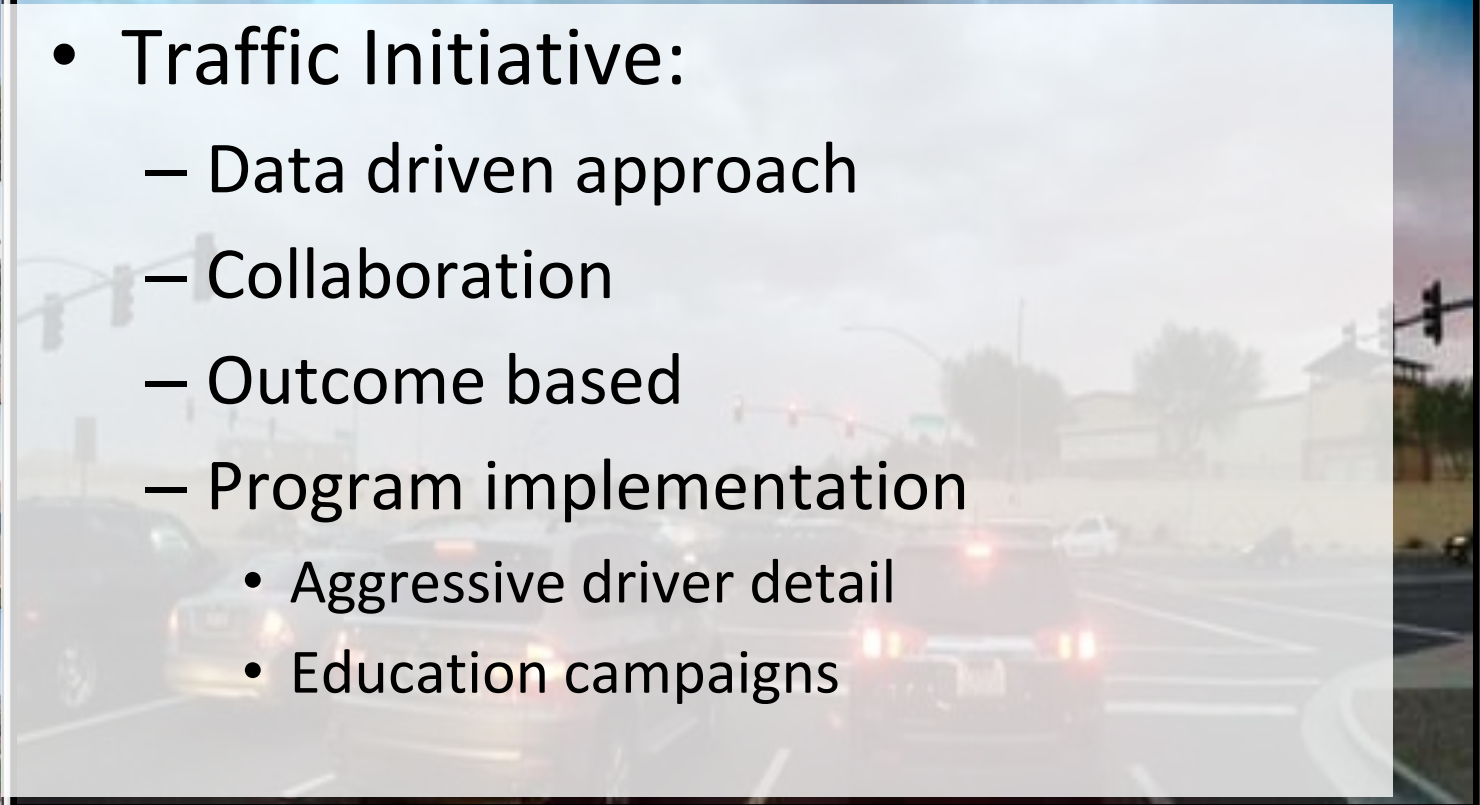
- Goals:
  - Reduce injury traffic collisions
  - Deploy innovative strategies
  - Reduce traffic complaints





# Traffic Initiative

- Traffic Initiative:
  - Data driven approach
  - Collaboration
  - Outcome based
  - Program implementation
    - Aggressive driver detail
    - Education campaigns





# Community Policing Strategies

- Goals:
  - Tailored approach
  - Crime Prevention Methods
    - Queen Creek Camera Program
    - Business Watch
    - Neighborhood Watch
  - Perception of crime



# Community Policing Strategies

- Identification of stakeholders
- Communication with stakeholders
- Familiarization with specific community concerns
- Regular reports to Town of Queen Creek Officials
- Incorporation into MCSO supervisor meetings
- Collaborative problem solving approach





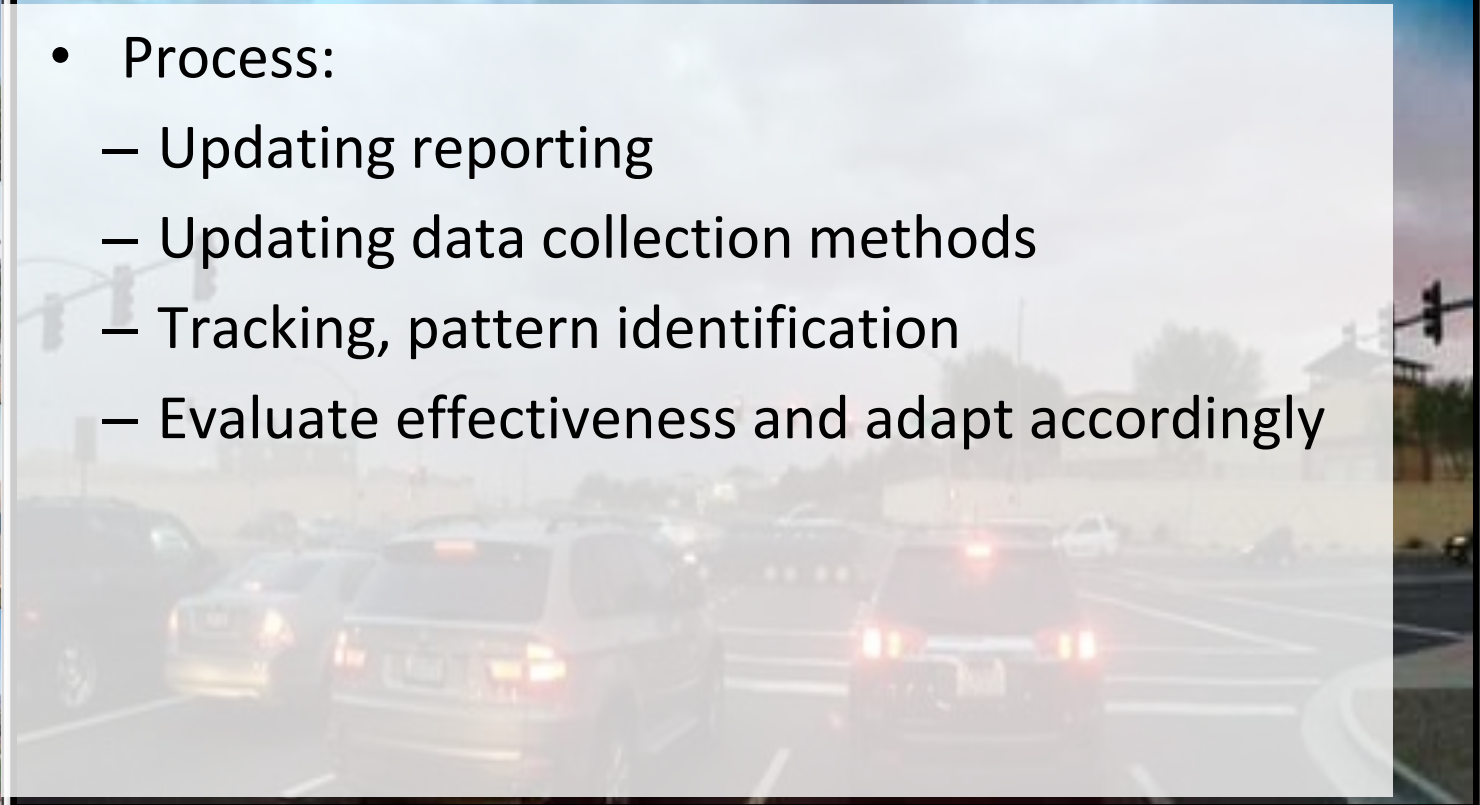
# Collaborative Problem Solving

- Maricopa County Attorney's Office
- Maricopa County Attorney's Office Juvenile Division
- Maricopa County Juvenile Probation Department
- Queen Creek Unified School District
- Town of Queen Creek Staff
- Community members



# Community Policing Strategies

- Process:
  - Updating reporting
  - Updating data collection methods
  - Tracking, pattern identification
  - Evaluate effectiveness and adapt accordingly



# Directed Patrol

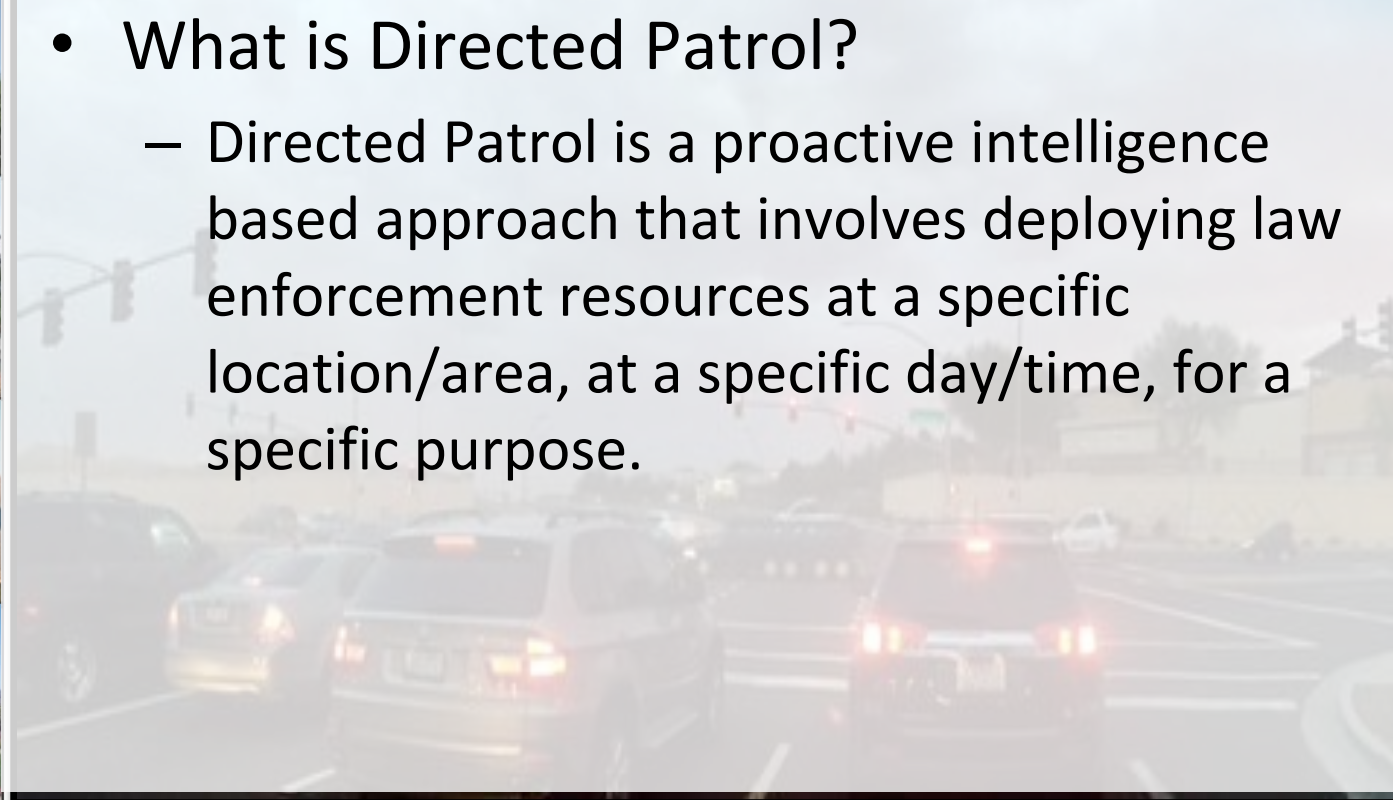
- Process:
  - Definition
  - Uniform data collection/reporting
  - Training
  - Expansion of data collection/reporting
  - Incorporation into CompStat meetings
  - Evaluate effectiveness and adapt accordingly





# Directed Patrol

- What is Directed Patrol?
  - Directed Patrol is a proactive intelligence based approach that involves deploying law enforcement resources at a specific location/area, at a specific day/time, for a specific purpose.



# Directed Patrol

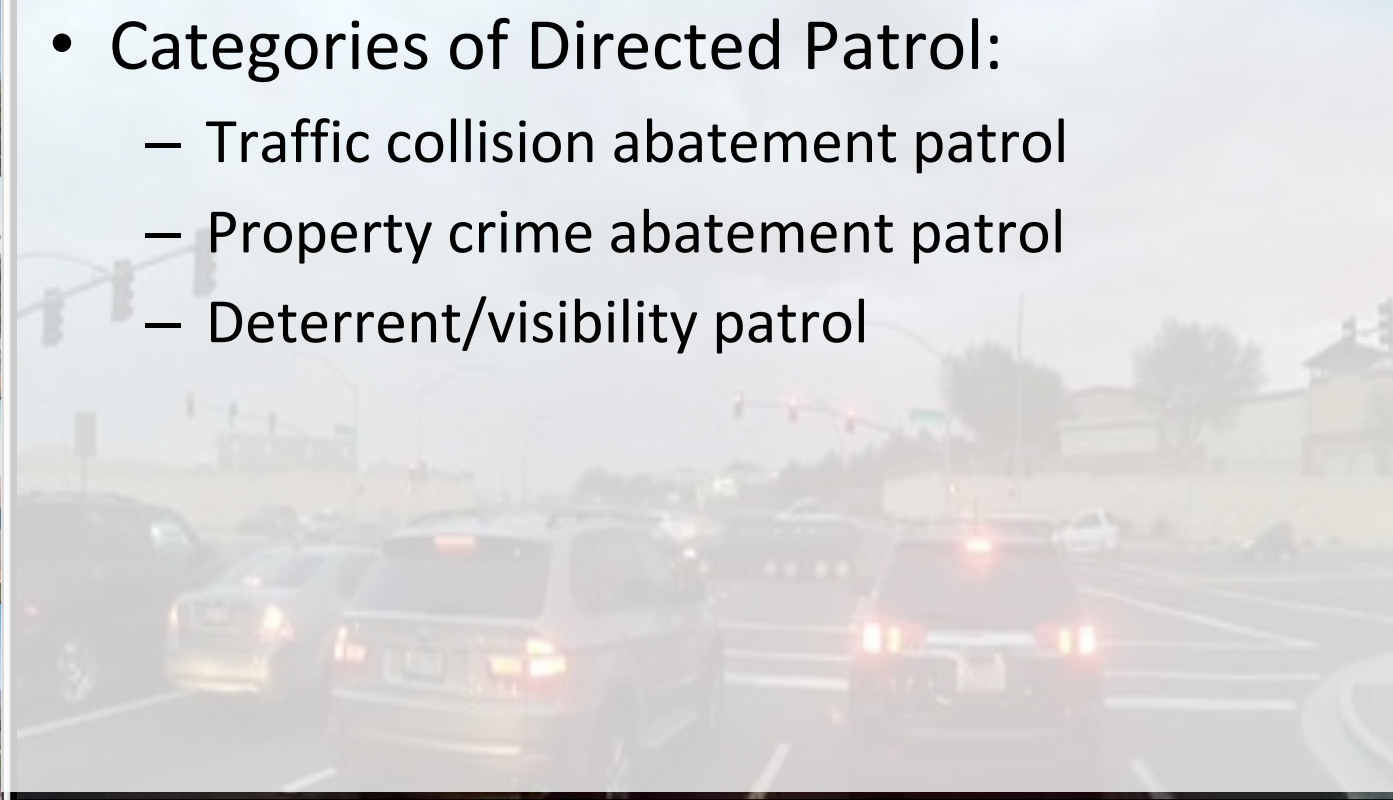
- Directed Patrol Identification:
  - Data analysis
  - CompStat meetings
  - Town of Queen Creek staff information
  - Elected official's information/feedback
  - Community member information/feedback





# Directed Patrol Categories

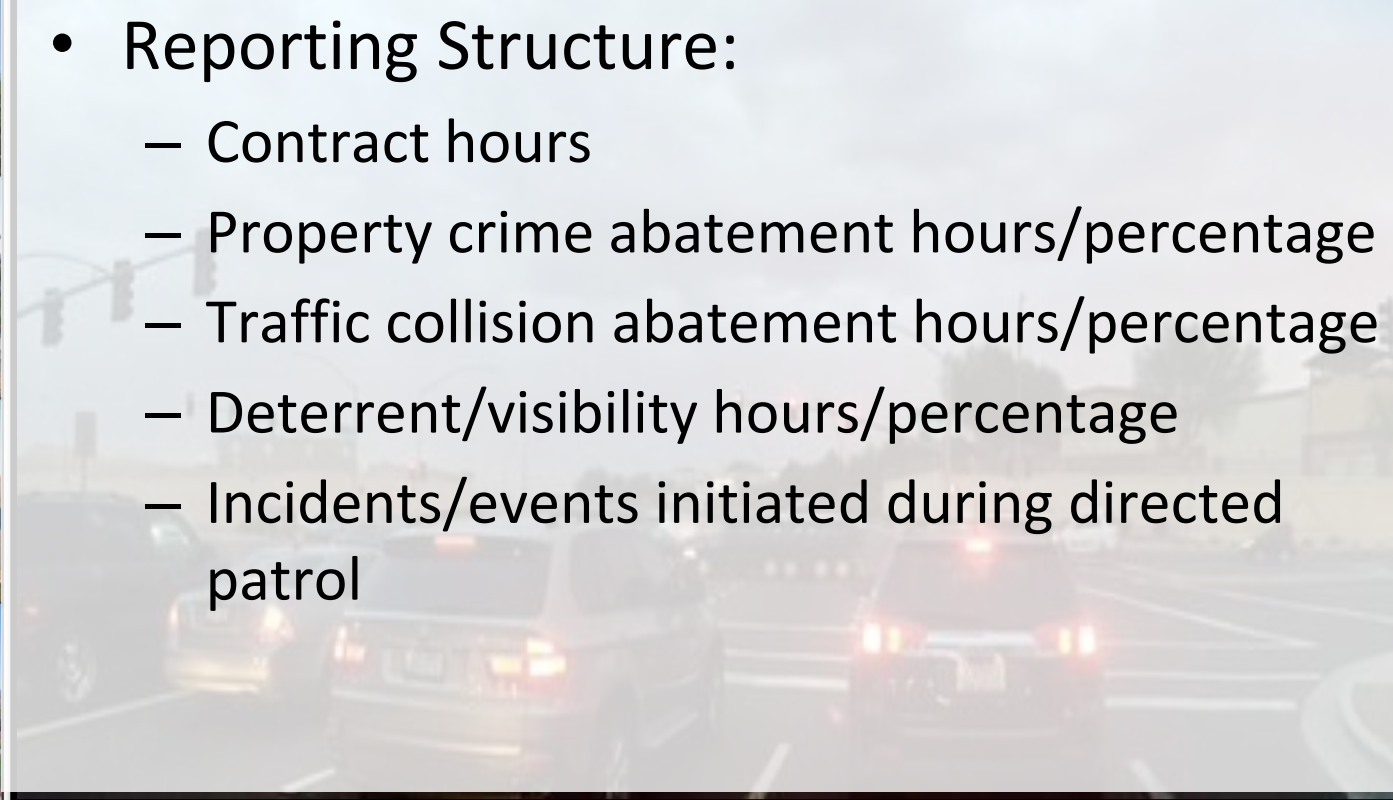
- Categories of Directed Patrol:
  - Traffic collision abatement patrol
  - Property crime abatement patrol
  - Deterrent/visibility patrol





# Directed Patrol

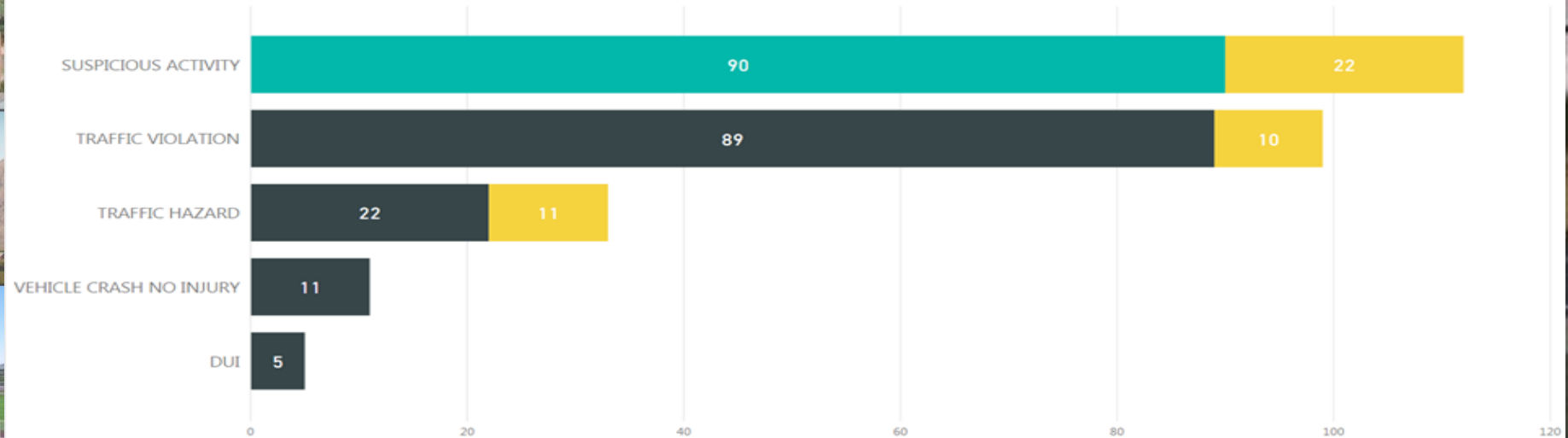
- Reporting Structure:
  - Contract hours
  - Property crime abatement hours/percentage
  - Traffic collision abatement hours/percentage
  - Deterrent/visibility hours/percentage
  - Incidents/events initiated during directed patrol



Positions	FTE	Reporting Period (Days)	Estimated Contract Hours	Property Crime Abatement Hours	Property Crime Abatement Hours %	Crash Abatement Hours	Crash Abatement Hours %	Total Directed Patrol Hours	Directed Patrol %	Directed Patrol % Goal	Deterrence Hours	Deterrence Hours %
Patrol Beat Deputies	25.00	31	3720	497	13%	1062	29%	1559	42%	40%	279	8%
Community Police Deputy	3.00	31	445	98	22%	255	57%	353	79%	80%	20	4%

### Incidents by Call Type & Abatement Type

Abatement Type ● 614B ● 614C ● 614D



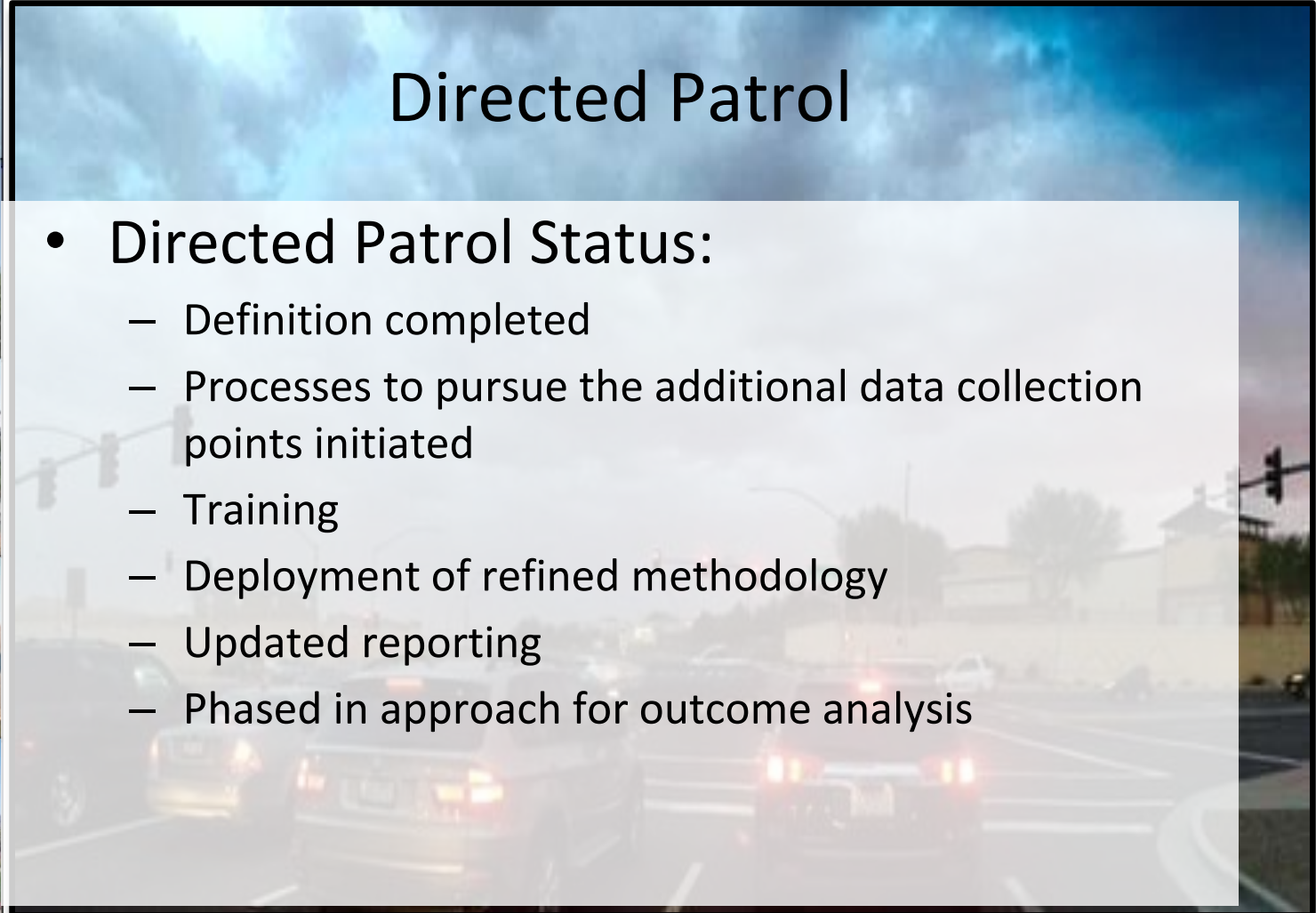




# Directed Patrol

- Directed Patrol Status:

- Definition completed
- Processes to pursue the additional data collection points initiated
- Training
- Deployment of refined methodology
- Updated reporting
- Phased in approach for outcome analysis





# **Maricopa County Sheriff's Office District 6**

## **Town of Queen Creek Law Enforcement Services Update**

