

Barney Farms

Queen Creek, Arizona



Preliminary Landscape Design Package

January 3, 2018

Resubmitted: March 7, 2018

DEVELOPER:
FULTON HOMES
9140 S. Kyrene Road, Suite 202
Tempe, AZ 85284
(480) 753-6789
CONTACT: Norm Nicholls
NNicholls@fultonhomes.com

LANDSCAPE ARCHITECT:
EPS GROUP, INC.
2045 S. Vineyard, Suite 101
Mesa, AZ 85210
TEL: (480) 503-2250
CONTACT: Aliza Sabin, RLA, LEED AP
Aliza.Sabin@epsgroupinc.com

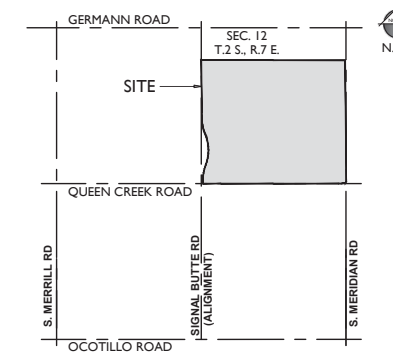
PLANNER:
EPS GROUP, INC.
2045 S. Vineyard, Suite 101
Mesa, AZ 85210
TEL: (480) 503-2250
CONTACT: Josh Hannon
Josh.Hannon@epsgroupinc.com

CIVIL ENGINEER:
EPS GROUP, INC.
2045 S. Vineyard, Suite 101
Mesa, AZ 85210
TEL: (480) 503-2250
CONTACT: Brian Nicholls, PE
Brian.Nicholls@epsgroupinc.com





VICINITY MAP

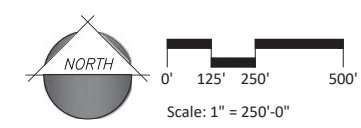


PROJECT DATA

| | |
|------------------|---|
| NET AREA: | +/- 473.39 ACRES |
| NO. OF LOTS: | 1702 LOTS |
| LOT SIZES: | 730 LOTS 339 LOTS 396 LOTS 237 LOTS 1702 LOTS |
| NET DENSITY: | 3.60 DU/AC |
| OPEN SPACE AREA: | 114.74 ACRES (24.2% OF NET AREA) |
| ACTIVE AREA: | 36.33 ACRES (31.7% OF OPEN SPACE) |
| PASSIVE AREA: | 78.41 ACRES (68.3% OF OPEN SPACE) |
| LAKE AREA: | 23.29 ACRES |
| TURF AREA: | 39.46 ACRES |

| PARCEL | NET AREA | LOT SIZE | TOTAL LOTS | OPEN SPACE |
|--------|----------|------------|------------|------------|
| 1 | 48.12 | 58' x 125' | 137 | 15.68 |
| 2 | 36.87 | 48' x 120' | 168 | 5.79 |
| 3 | 29.2 | 53' x 120' | 111 | 5.36 |
| 4 | 26.85 | 70' x 130' | 81 | 3.56 |
| 5 | 50.31 | 48' x 120' | 210 | 12.69 |
| 6 | 28.21 | 58' x 125' | 120 | 2.07 |
| 7 | 31.52 | 70' x 130' | 83 | 7.51 |
| 8 | 23.89 | 53' x 120' | 93 | 5.12 |
| 9 | 25.87 | 48' x 120' | 110 | 6.45 |
| 10 | 25.56 | 48' x 120' | 119 | 4.38 |
| 11 | 27.35 | 70' x 130' | 84 | 33.61 |
| 12 | 28.97 | 58' x 125' | 128 | 0.86 |
| 13 | 24.67 | 53' x 120' | 102 | 4.18 |
| 14 | 35.60 | 48' x 120' | 156 | 7.48 |
| PARK | 30.4 | N/A | N/A | N/A |
| TOTAL | 473.39 | N/A | 1702 | 114.74 |

- MAIN PARK AREA**
 - Active Turf Field
 - Aquatic Center
 - Tot Lot Plaza
 - Sport Courts
 - Group Ramada
 - Parking Lot (99 Spaces)
- NEIGHBORHOOD PARK**
 - Themed Park
 - Ramada
 - Tot Lot
 - Half Basketball Court
 - Passive Peace Garden
- LAKE**
 - Boardwalk & Dock
 - Boardwalk & Ramada
 - Fountain
- ENTRY**
 - Entry Monument with Water Feature
 - Secondary Entry Monument





1 ENTRY MONUMENT
NTS



KEYNOTES

- | | |
|---|--|
| 1 CISTERN W/ STONE VENEER (FULL GROUT FINISH) | 6 PISTACHE GROVE |
| 2 WATER SPOUTS | 7 SIDEWALK |
| 3 TIERED WATER FEATURE | 8 GARDEN WALL W/ STONE VENEER (RAKED GROUT FINISH) |
| 4 SIGN WALL W/ BACKLIT LETTERING | 9 LANDSCAPE BENCH |
| 5 TURF | 10 DECORATIVE PAVING |

DISTRICT ICON CHARACTER IMAGES

1 2 CISTERN W/ WATER SPOUTS



3 TIERED WATER FEATURE



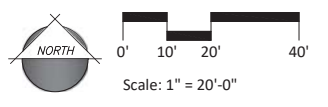
4 SIGN WALL W/ BACKLIT LETTERING



6 PISTACHE GROVE

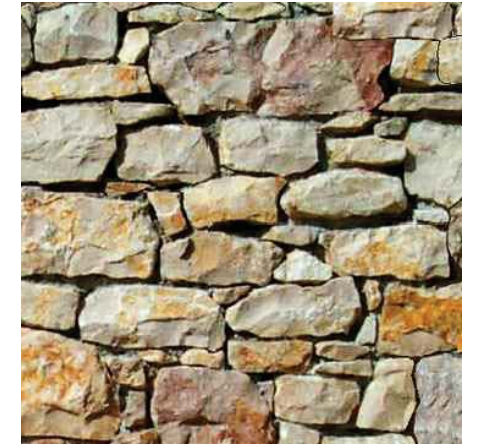


I ENTRY PLAN ENLARGEMENT
Scale: 1" = 20'-0"

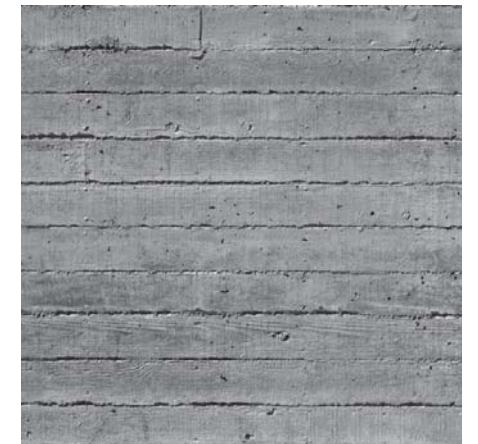


KEYNOTES

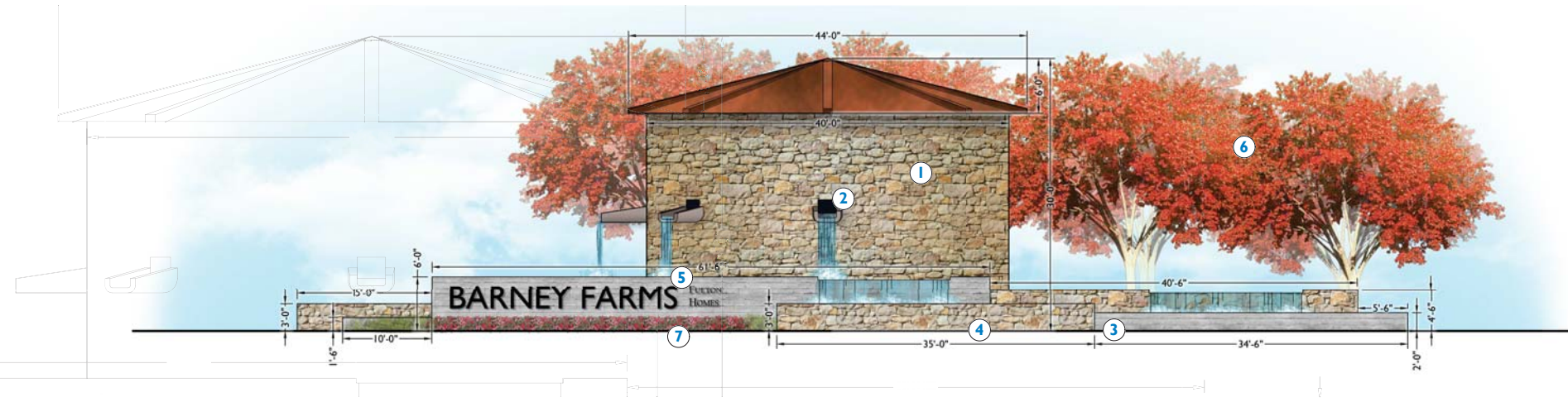
- ① CISTERN W/ STONE VENEER (FULL GROUT FINISH)
- ② WATER SPOUT
- ③ TIERED WATER FEATURE W/ BOARD FORM CONCRETE
- ④ TIERED WATER FEATURE W/ STONE VENEER (RAKED GROUT FINISH)
- ⑤ SIGN WALL W/ BACKLIT 30" LETTER (75 SQ. FT.)
- ⑥ PISTACHE GROVE
- ⑦ LOW LUSH PLANTING



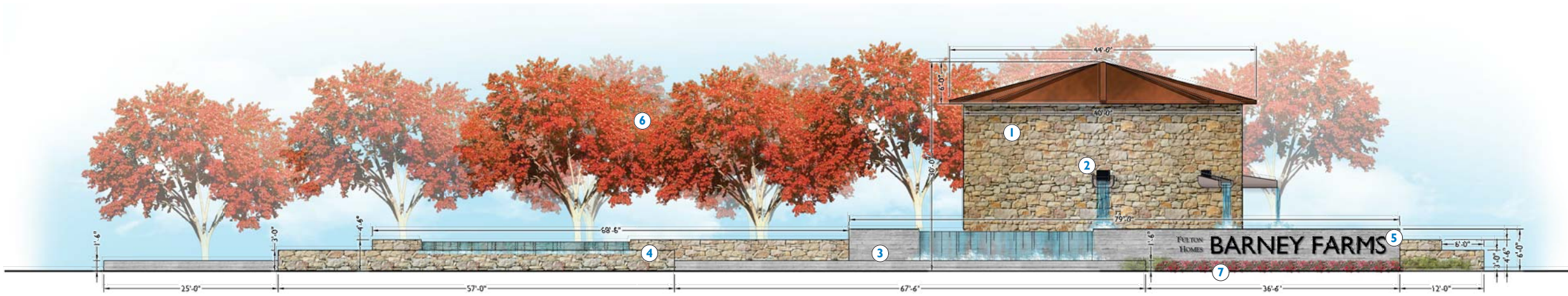
STONE VENEER - APACHE STONE "APACHE GOLD"



BOARD FORM CONCRETE FINISH



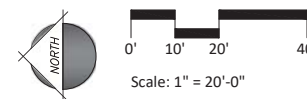
1 ENTRY @ QUEEN CREEK ROAD ELEVATION (LOOKING NORTH)
Scale: 1/8" = 1'-0"



2 ENTRY @ QUEEN CREEK ROAD PLAN (LOOKING EAST)
Scale: 1/8" = 1'-0"



I ENTRY AT SIGNAL BUTTE ROAD ENLARGEMENT PLAN
Scale: 1" = 20'-0"



KEYNOTES

- | | |
|---|--|
| 1 CISTERN W/ STONE VENEER (FULL GROUT FINISH) | 6 PISTACHE GROVE |
| 2 WATER SPOUTS | 7 SIDEWALK |
| 3 TIERED WATER FEATURE | 8 GARDEN WALL W/ STONE VENEER (RAKED GROUT FINISH) |
| 4 SIGN WALL W/ BACKLIT LETTERING | 9 LANDSCAPE BENCH |
| 5 TURF | 10 DECORATIVE PAVING |

CHARACTER IMAGES

1 2 CISTERN W/ WATER SPOUTS



3 TIERED WATER FEATURE

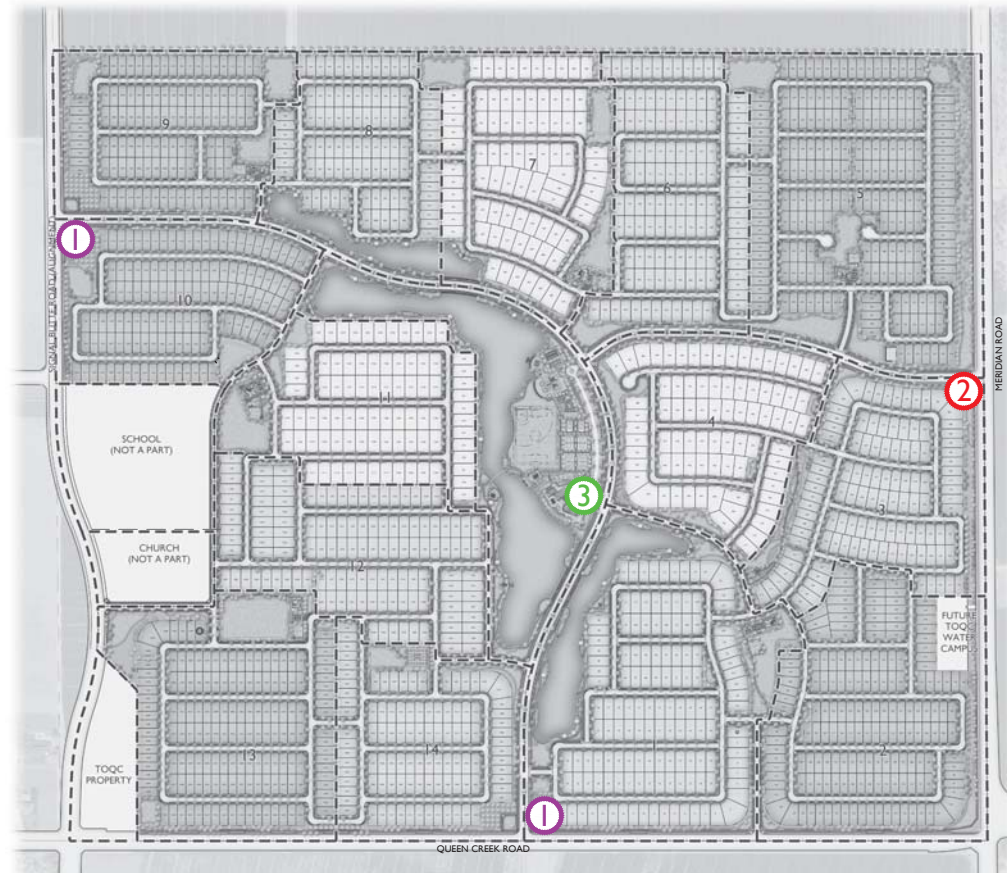


4 SIGN WALL W/ BACKLIT LETTERING

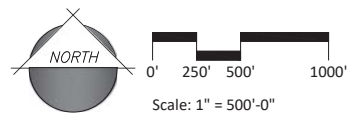


6 PISTACHE GROVE





1 MONUMENT LOCATION
Scale: 1" = 500'-0"



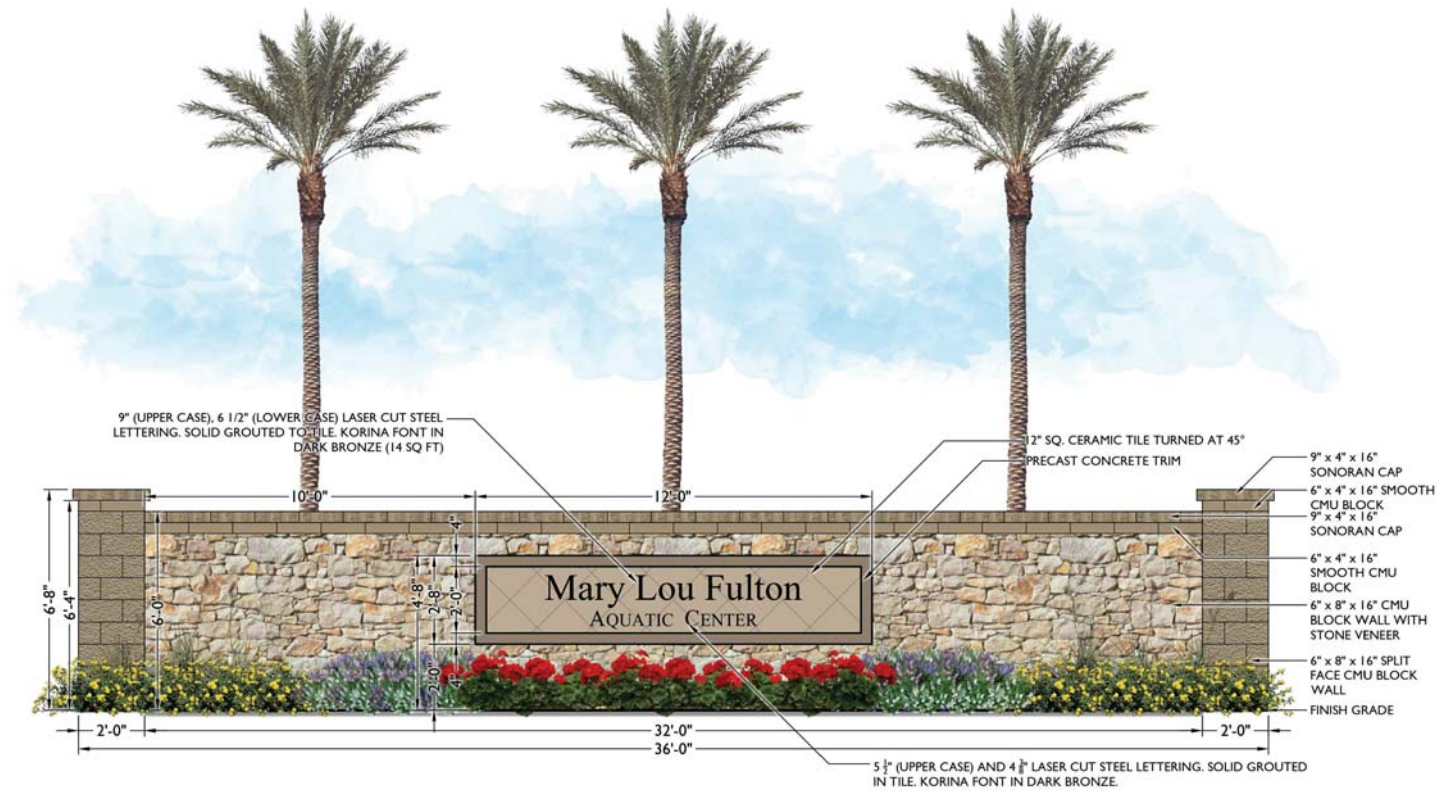
KEYNOTES

- ① PRIMARY ENTRY MONUMENT (2 TOTAL) (SEE DETAILS ON L-0.02 - L-0.02C)
- ② SECONDARY ENTRY MONUMENT (1 TOTAL)
- ③ AQUATIC CENTER (1 TOTAL)



2 SECONDARY ENTRY MONUMENT (1 TOTAL)
Scale: 3/8" = 1'-0"

②



3 AQUATIC CENTER MONUMENT (1 TOTAL)
Scale: 3/8" = 1'-0"

③

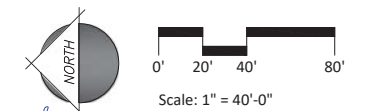






KEYNOTES

- 1 RAMADA WITH PICNIC TABLE
- 2 STEPS
- 3 BASKETBALL COURT
- 4 PICKLE BALL COURT
- 5 VOLLEY BALL COURT
- 6 BOCCIE BALL COURT
- 7 HORSESHOES
- 8 SHADED LOT TOT (FABRIC SHADE SAIL, COLOR: TAN)
- 9 SEAT WALL
- 10 POOL ENTRY
- 11 TRELLIS SHADE STRUCTURE
- 12 RAMADA
- 13 RESTROOM
- 14 POOL EQUIPMENT AREA
- 15 SHADE SAIL STRUCTURE
- 16 KID POOL
- 17 BEACH ENTRY
- 18 LEISURE POOL
- 19 LAP POOL
- 20 SPORT POOL
- 21 RAMADA (30' x 20')
- 22 RAMADA (40' x 10')
- 23 TABLE & CHAIR
- 24 UMBRELLA SHADE WITH TABLE & CHAIR
- 25 CHAISE LOUNGE
- 26 PEDESTRIAN SEATING NODE (WITH BENCH & TRELLIS SHADE STRUCTURE)
- 27 MULTI-EVENT PLAZA
- 28 LANDSCAPE BENCH
- 29 ACTIVE TURF AREA
- 30 LAKE TRAIL
- 31 BOARDWALK & RAMADA
- 32 BOARDWALK & DOCK
- 33 PEDESTRIAN BRIDGE
- 34 PARKING LOT (99 SPACE TOTAL)
- 35 EVENT LAWN
- 36 TURF
- 37 TRELLIS
- 38 RAMADA (20' x 20')
- 39 PARKING SCREEN WALL
- 40 POOL SHADE SAIL (COLOR: TAN)





FRONT / EAST ELEVATION



SOUTH ELEVATION

FULTON HOMES
You're Proud To Own, We're Proud To Build!

BARNEY FARMS
 COMMUNITY BARN RAMADA
 QUEEN CREEK, ARIZONA

Linderoth Associates
 ARCHITECTS
 8135 East Indian Bend Road, Suite 100
 Scottsdale, Arizona 85250
 P:480.941.0840 F:480.949.1041
 Architecture - Planning - Visualization
 www.linderoth.com



LAKE SIDE / WEST ELEVATION



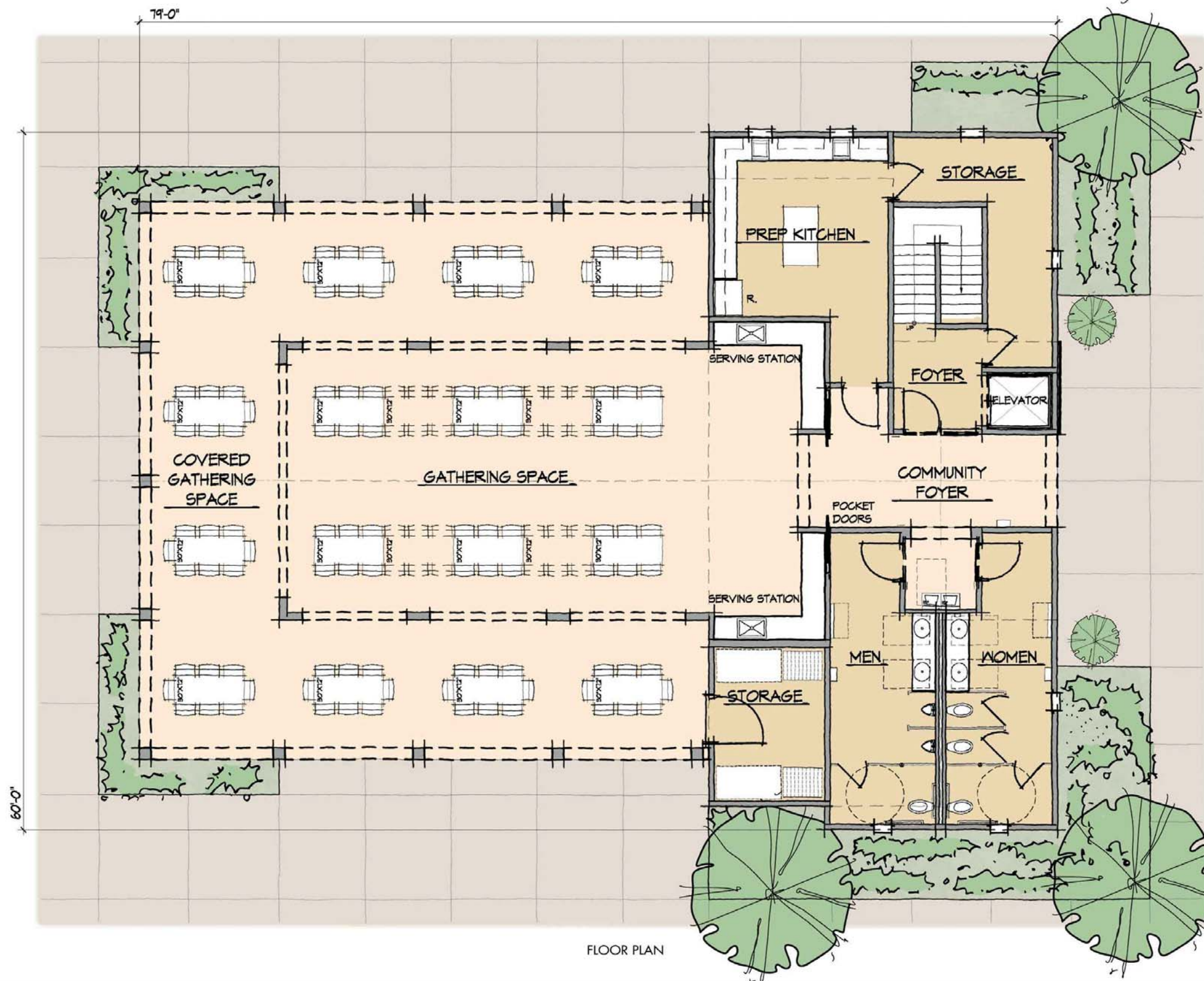
NORTH ELEVATION

FULTON HOMES
You're Proud To Own, We're Proud To Build!

BARNEY FARMS
 COMMUNITY BARN RAMADA
 QUEEN CREEK, ARIZONA

Linderoth Associates
 ARCHITECTS
 8135 East Indian Bend Road, Suite 103
 Scottsdale, Arizona 85250
 P: 480.941.0840 F: 480.949.1041
 Architecture • Planning • Visualization
 www.linderoth.com





FLOOR PLAN

FULTON HOMES
You're Proud To Own, We're Proud To Build!

BARNEY FARMS
 COMMUNITY BARN RAMADA
 QUEEN CREEK, ARIZONA

Linderoth Associates
 ARCHITECTS
 8135 East Indian Bend Road, Suite 103
 Scottsdale, Arizona 85250
 P: 480.941.0840 F: 480.949.1041
 Architecture • Planning • Visualization
 www.linderoth.com

16-394

FULTON HOMES

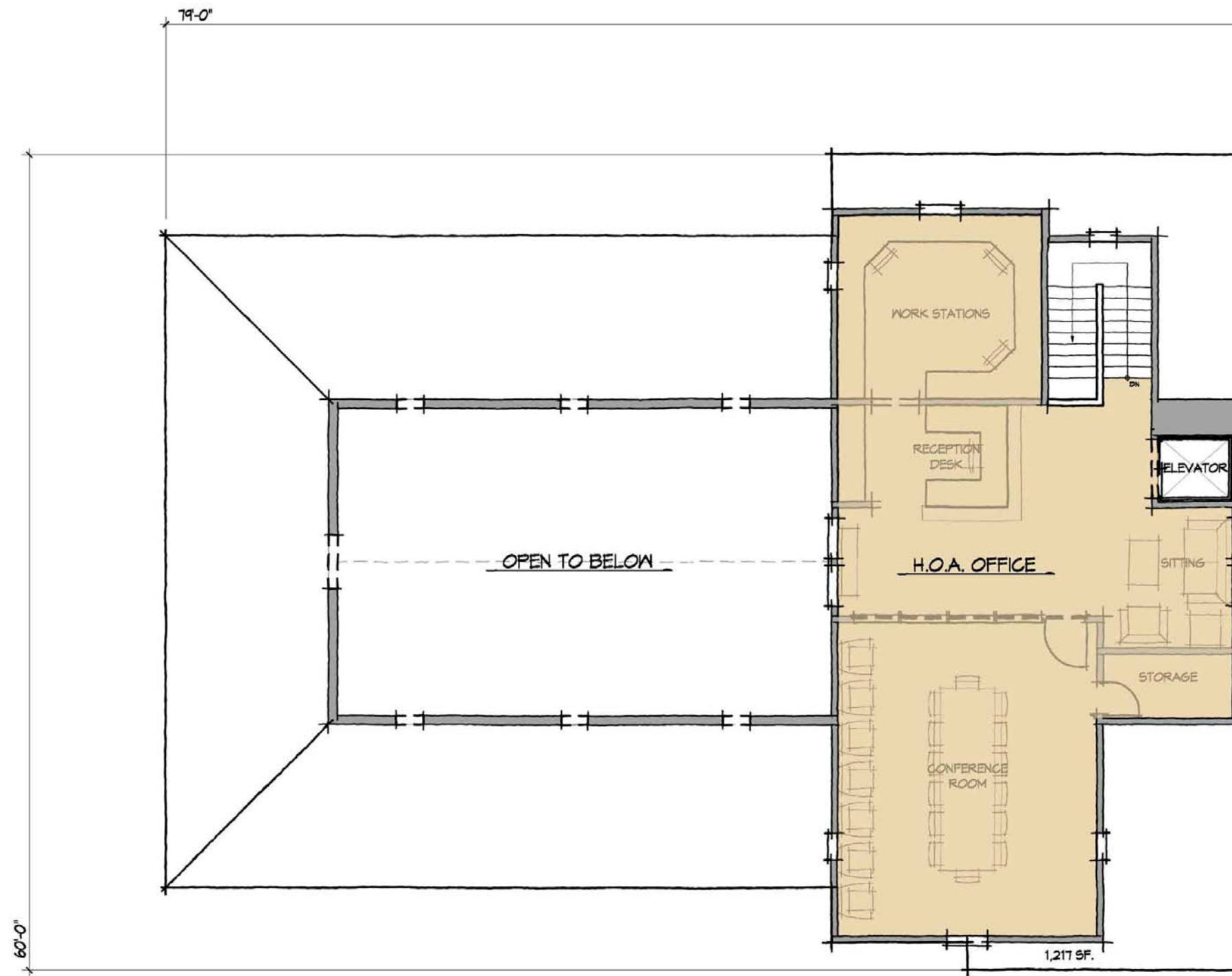
Barney Farms

Queen Creek, Arizona

Main Park Community Ramada

L-0.03E
 3/28/2018





UPPER FLOOR PLAN

FULTON HOMES
You're Proud To Own, We're Proud To Build!

BARNEY FARMS
 COMMUNITY BARN RAMADA
 QUEEN CREEK, ARIZONA

Linderoth Associates
 ARCHITECTS
 8135 East Indian Bend Road, Suite 103
 Scottsdale, Arizona 85250
 P: 480.741.0840 F: 480.947.1041
 Architecture • Planning • Visualization
 www.linderoth.com





SOUTH ELEVATION



STREET / EAST ELEVATION

FULTON HOMES
You're Proud To Own, We're Proud To Build!

BARNEY FARMS
COMMUNITY POOL BUILDING
QUEEN CREEK, ARIZONA

Linderoth Associates
ARCHITECTS
8135 East Indian Bend Road, Suite 103
Scottsdale, Arizona 85250
P: 480.941.0840 F: 480.949.1041
Architecture • Planning • Visualization
www.linderoth.com





NORTH ELEVATION



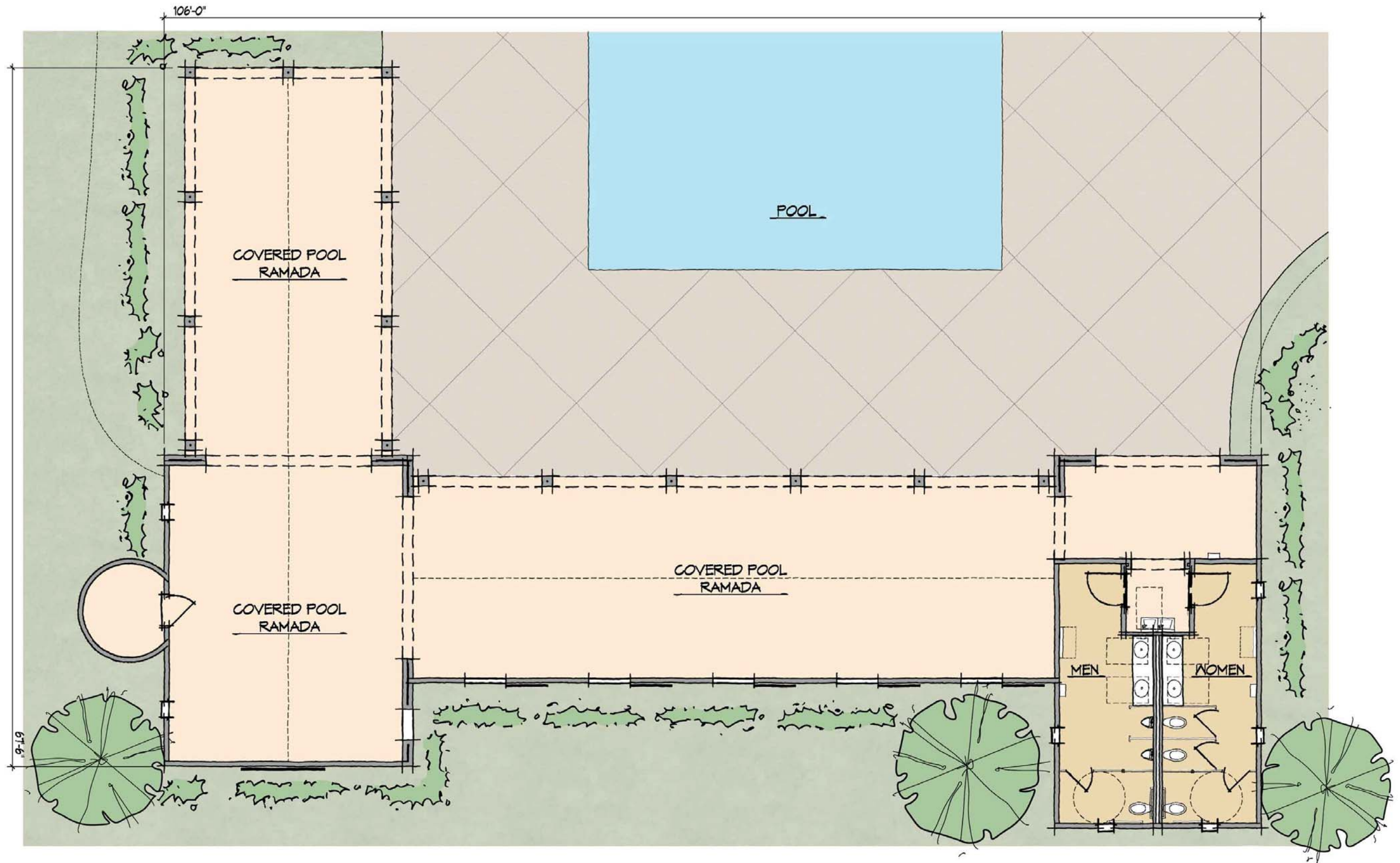
POOL / WEST ELEVATION

FULTON HOMES
You're Proud To Own, We're Proud To Build!

BARNEY FARMS
COMMUNITY POOL BUILDING
QUEEN CREEK, ARIZONA

Linderoth Associates
ARCHITECTS
8135 East Indian Bend Road, Suite 103
Scottsdale, Arizona 85250
P: 480.941.0840 F: 480.949.1041
Architecture - Planning - Visualization
www.linderoth.com





FULTON HOMES
You're Proud To Own, We're Proud To Build!

BARNEY FARMS
 COMMUNITY POOL BUILDING
 QUEEN CREEK, ARIZONA

Linderoth Associates
 ARCHITECTS
 8135 East Indian Bend Road, Suite 103
 Scottsdale, Arizona 85250
 P: 480.941.0840 F: 480.949.1041
 Architecture - Planning - Visualization
 www.linderoth.com





FRONT / EAST ELEVATION

COLOR SCHEME 8

Roof: McElroy Metal, Medium Bronze



| | | | | |
|--|---|---|---|---|
| Fascia: SW7048 Urbane Bronze | Main Body Siding: SW9172 Studio Clay | Window Frames: SW7048 Urbane Bronze | Shutters & Doors: SW9107 Uber Umber | Metal Hardware: Black |
|  |  |  |  |  |

| | | | |
|---|---|--|---|
| Wood Posts & Beams: Semi-Transparent, Wood Stain, Super Deck, SW3531 Blue Shadows |  | Wood Ceilings: Semi-Transparent, Wood Stain, Super Deck, SW3568 Weathered Grey |  |
|---|---|--|---|

| | | |
|--|---|--|
|  <p><i>You're Proud To Own, We're Proud To Build!</i></p> | <p>BARNEY FARMS COMMUNITY BARN RAMADA QUEEN CREEK, ARIZONA</p> | <p>Linderoth Associates ARCHITECTS 8135 East Indian Bend Road, Suite 103 Scottsdale, Arizona 85250 P: 480.941.0840 F: 480.949.1041 Architecture • Planning • Visualization www.linderoth.com</p>  |
|--|---|--|

MAIN PARK PLAY STRUCTURE



FARM THEME MAIN STRUCTURE



CORN STALK CLIMBER



COIL SPRING RIDER



SEESAW



TRACTOR SPRING RIDE



HAY BALE CLIMBER



ZIP LINE



TIRE SWINGS



SWINGS



TODDLER SWINGS