

STATE ROUTE 24 AND NORTH/SOUTH ROADWAYS



**BETTER
ROADS
AHEAD**

Troy White, Public Works Director

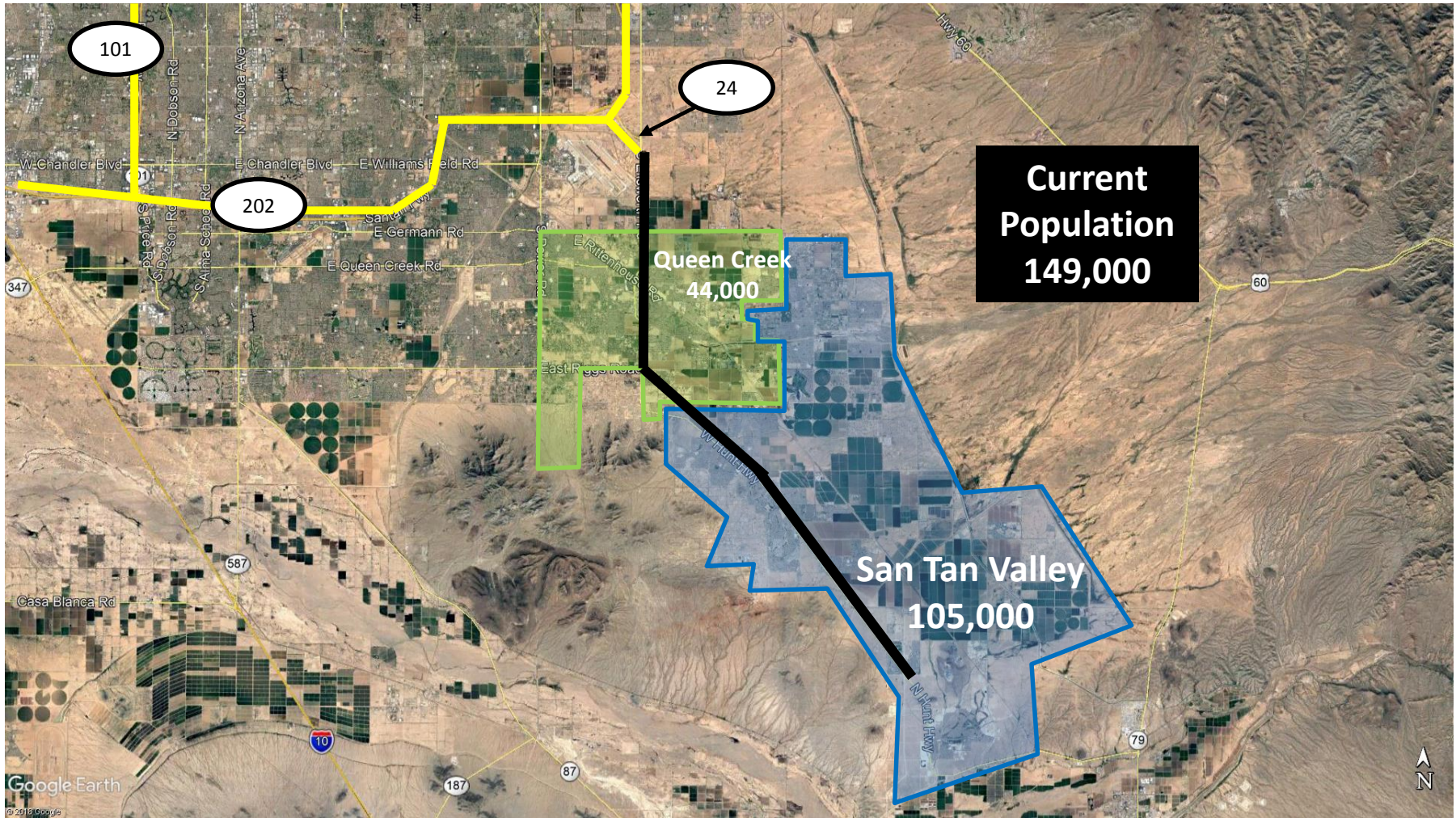
4.17.18

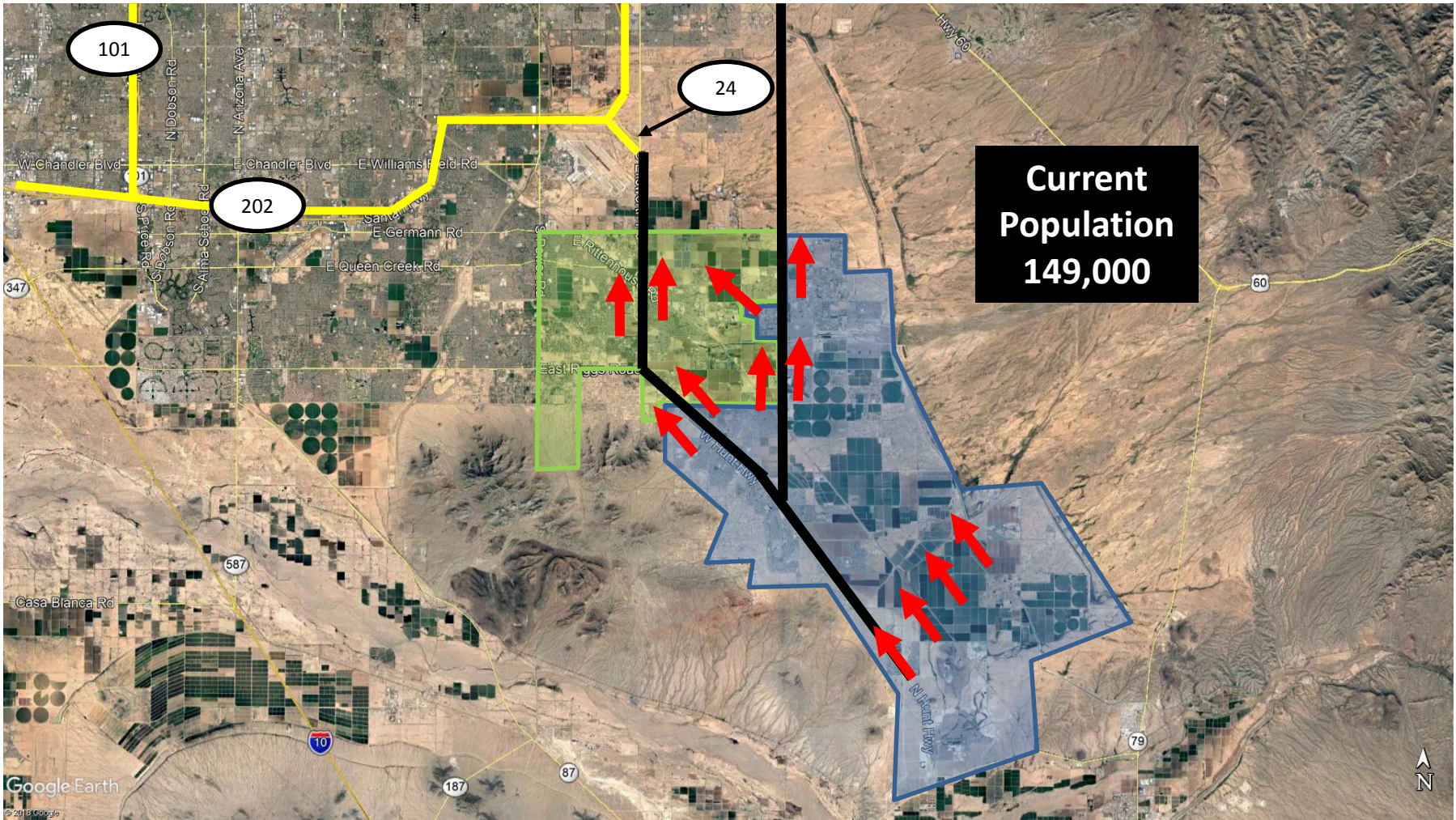
2018 FOCUS

North/South Roadways

- City of Mesa
 - Ellsworth Road
 - Signal Butte Road
- Pinal County IGA's
 - Meridian Road – Germann to SR24 (IGA Approved)
 - Meridian Road – Combs to Germann (IGA in Process)







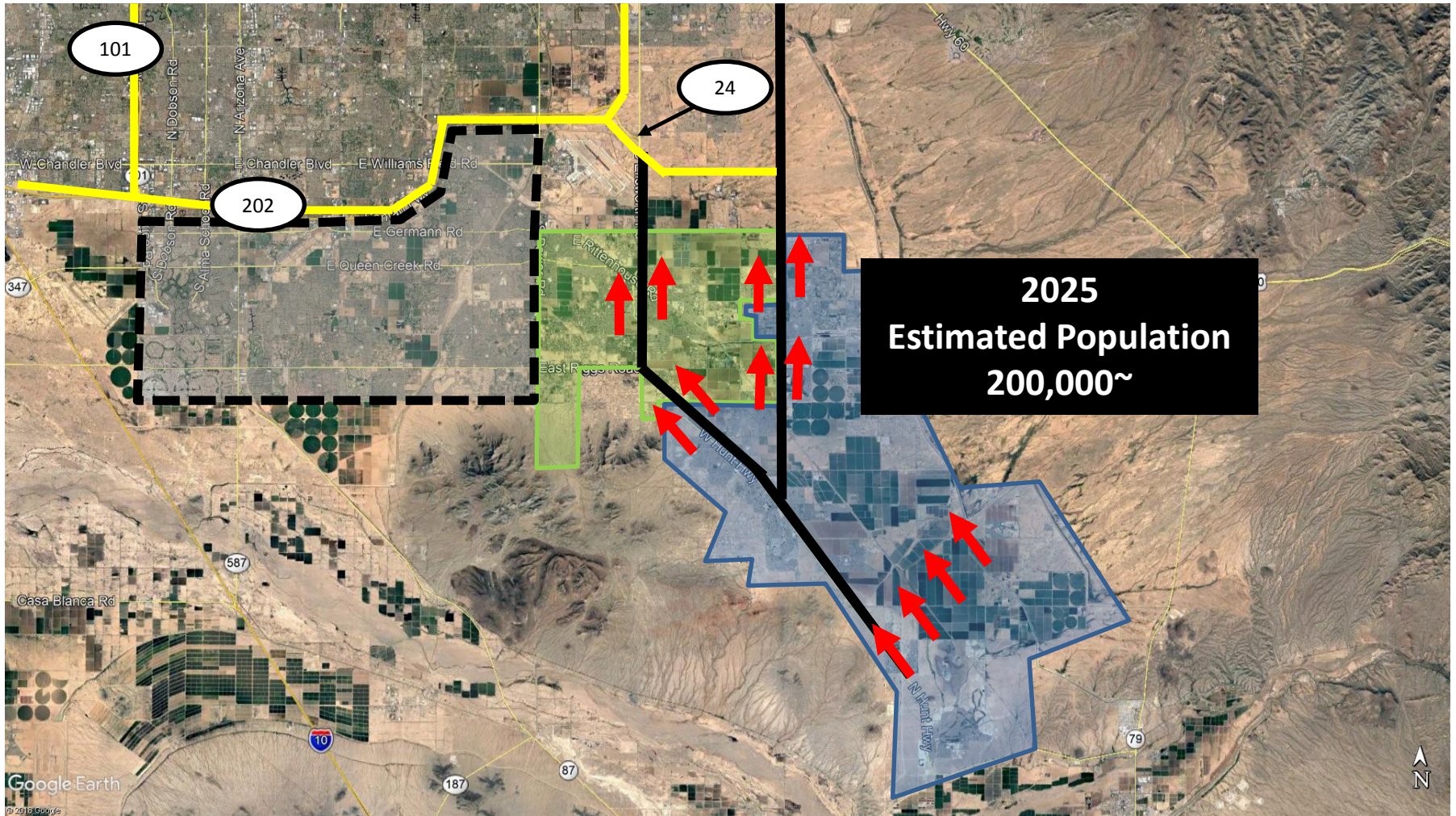
101

24

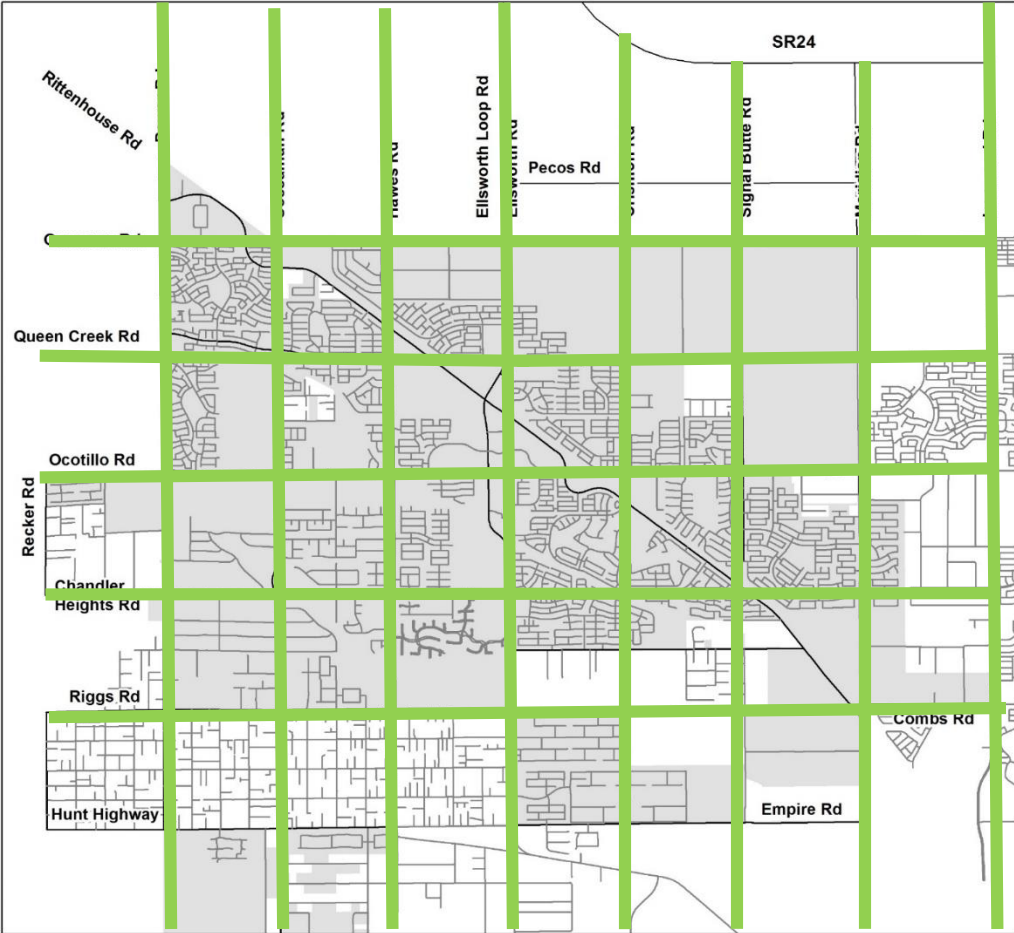
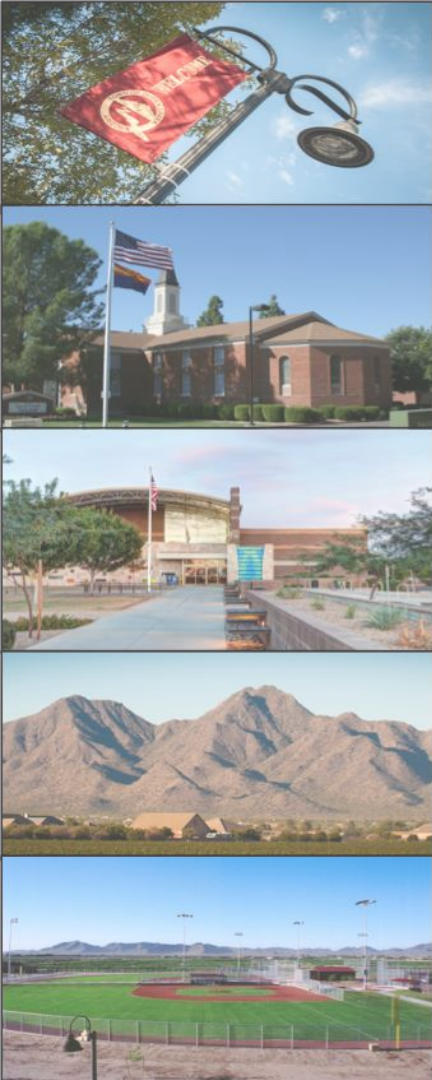
202

Current
Population
149,000

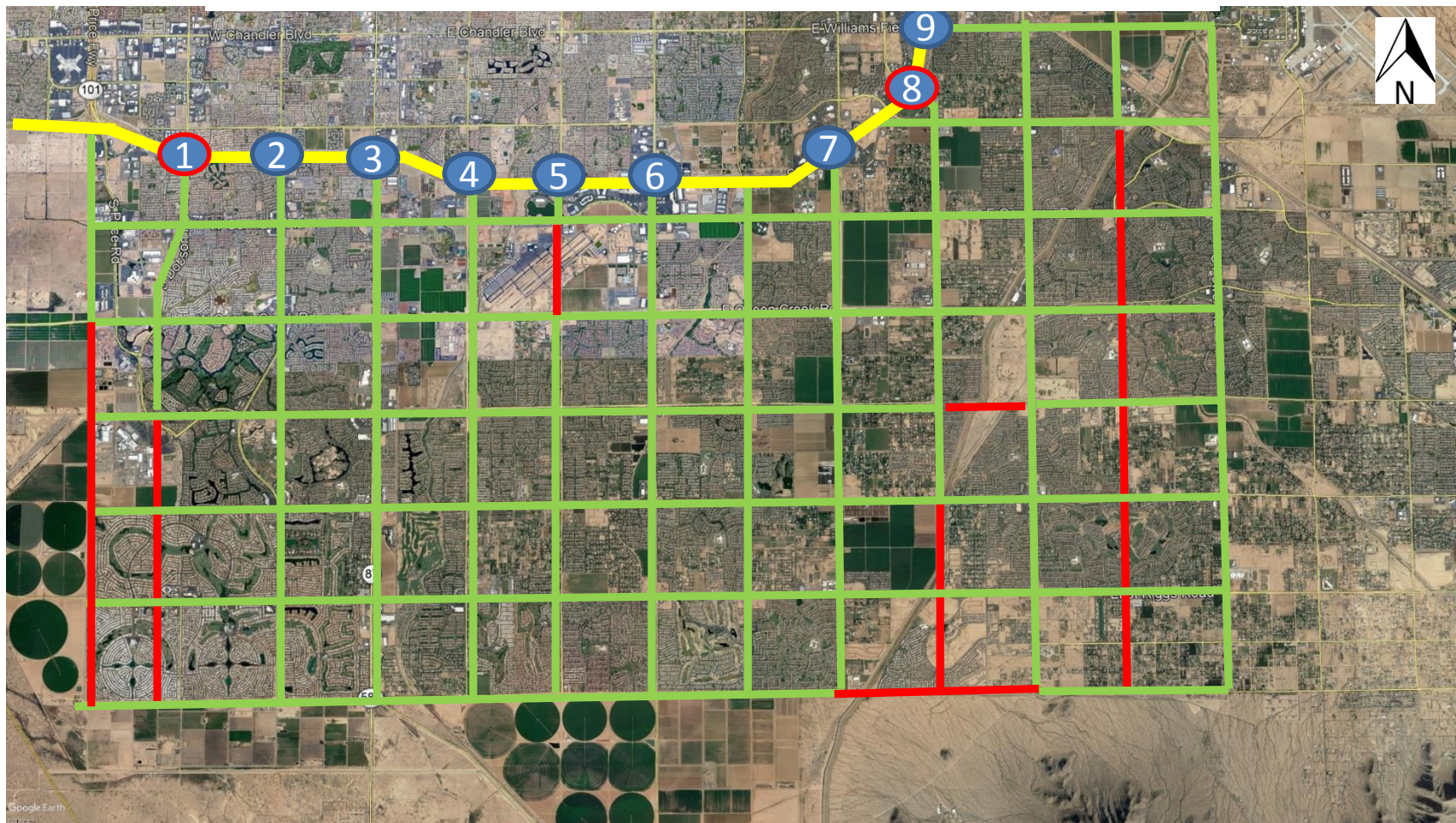




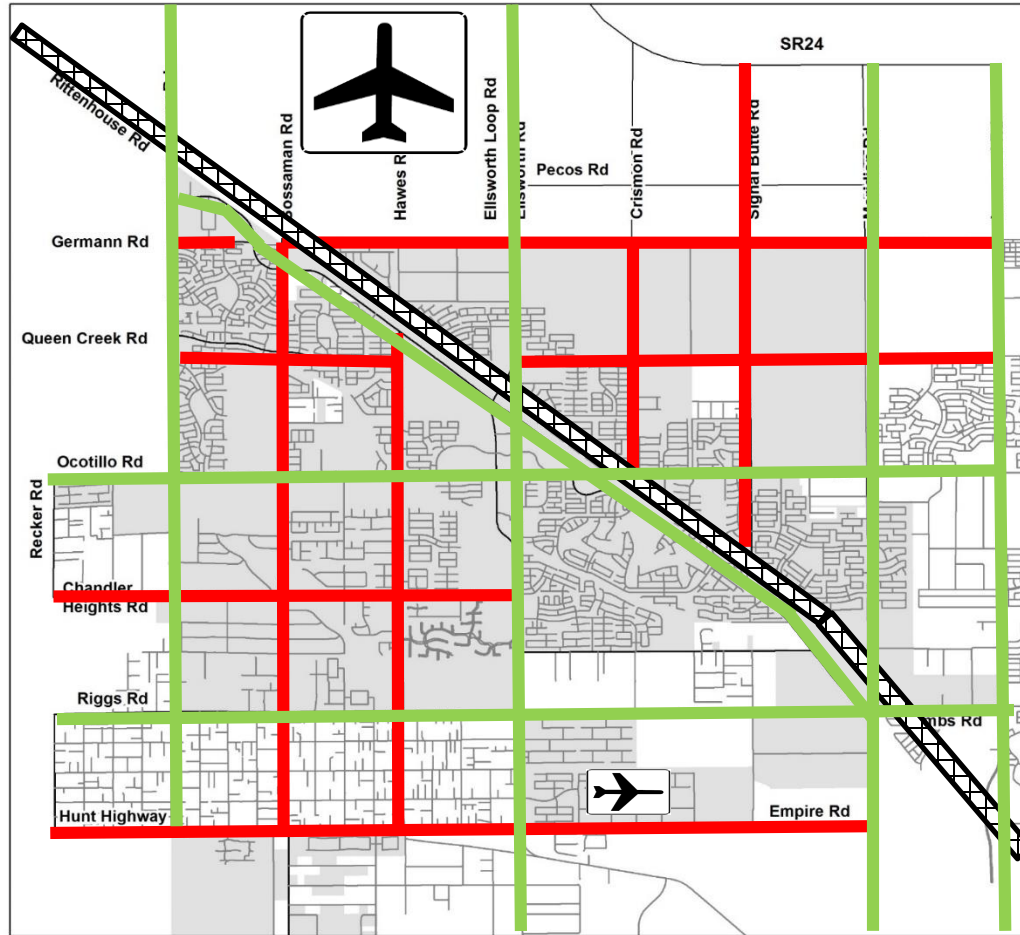
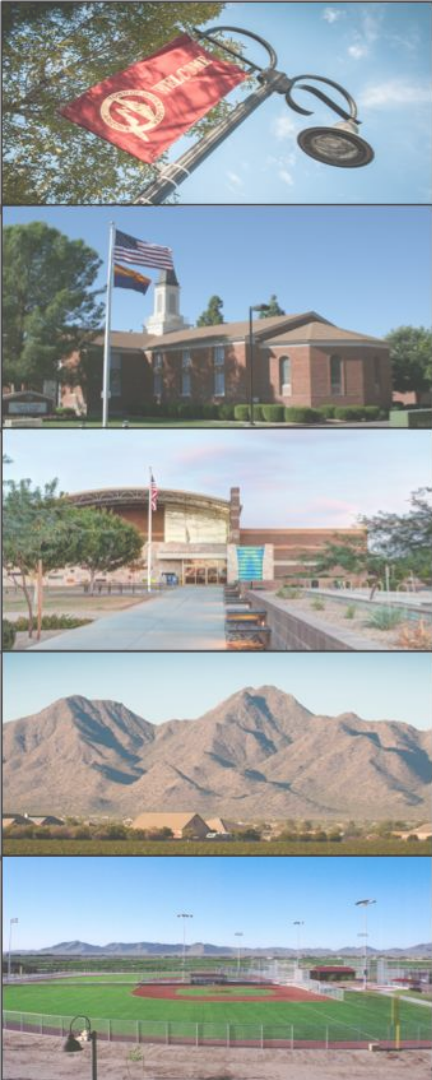
Perfect Grid System



Typical Grid System



Queen Creek Grid System – AT BUILD-OUT



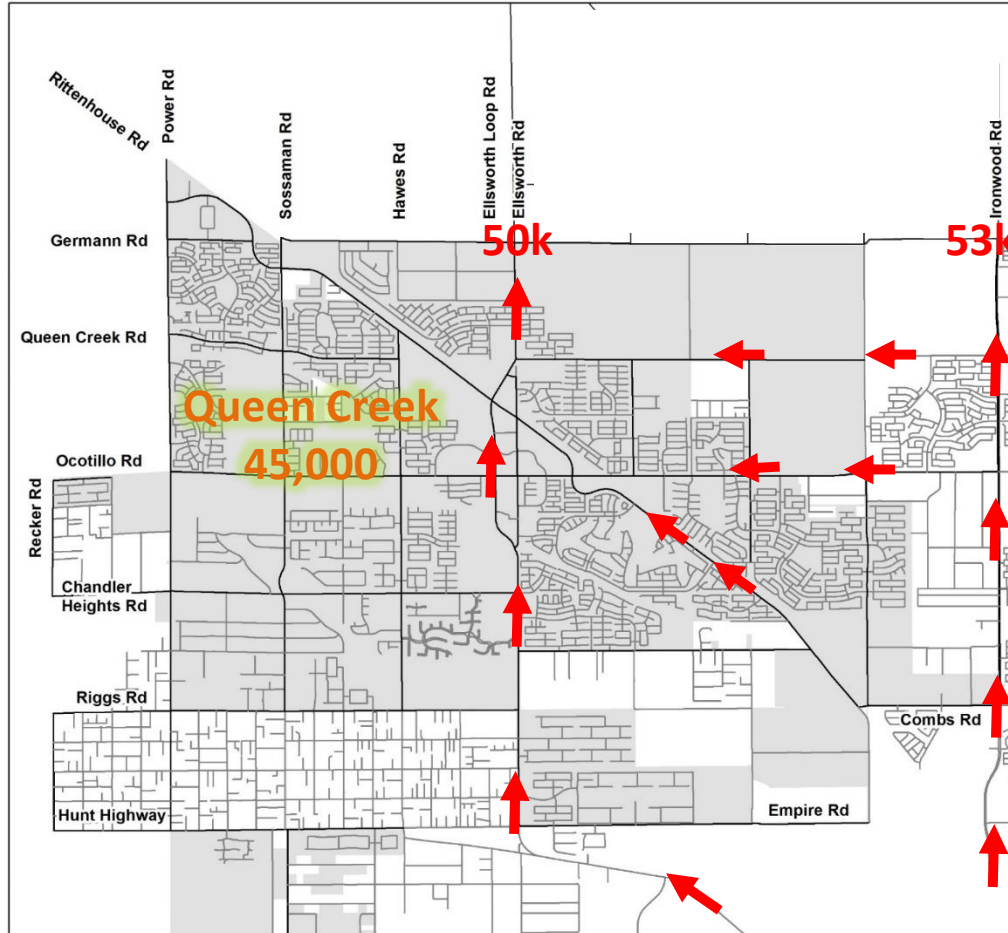
San Tan Valley
105,000

Traffic Capacity

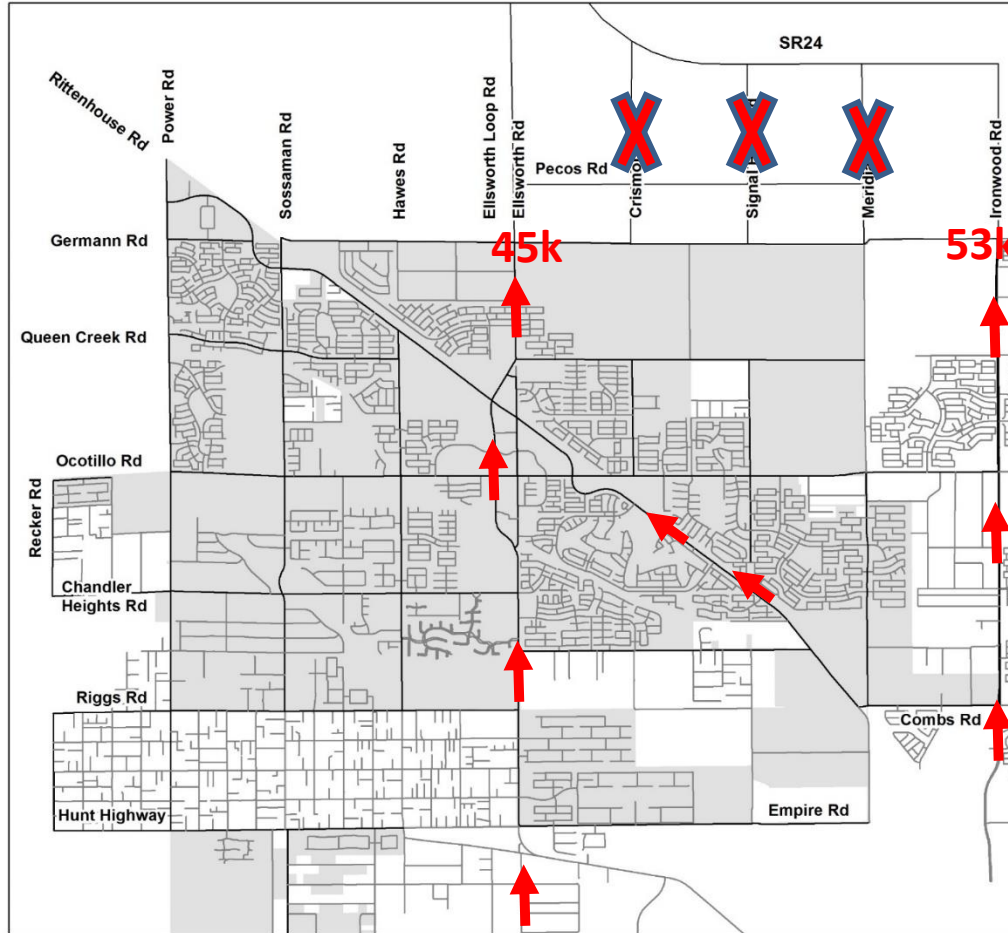
Type of Roadway	Number of Lanes	Daily Volume
Arterial	2	16,500
Arterial (no median)	4	32,000
Arterial (with median)	4	35,500
Arterial (no median)	6	49,000
Arterial (with median)	6	54,000

Existing Conditions

← = Traffic Flow



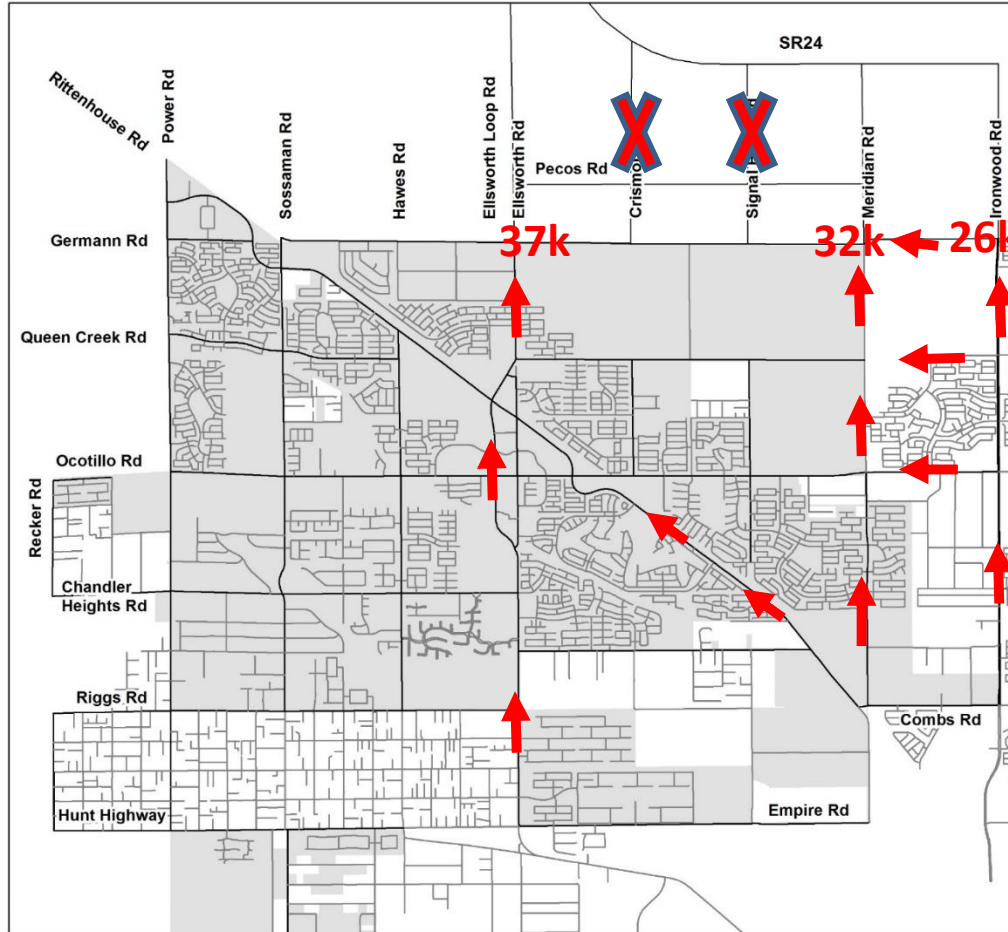
SR 24 Ironwood Road Interchange Only



San Tan Valley
105,000

SR 24 Ironwood Road and Meridian Road

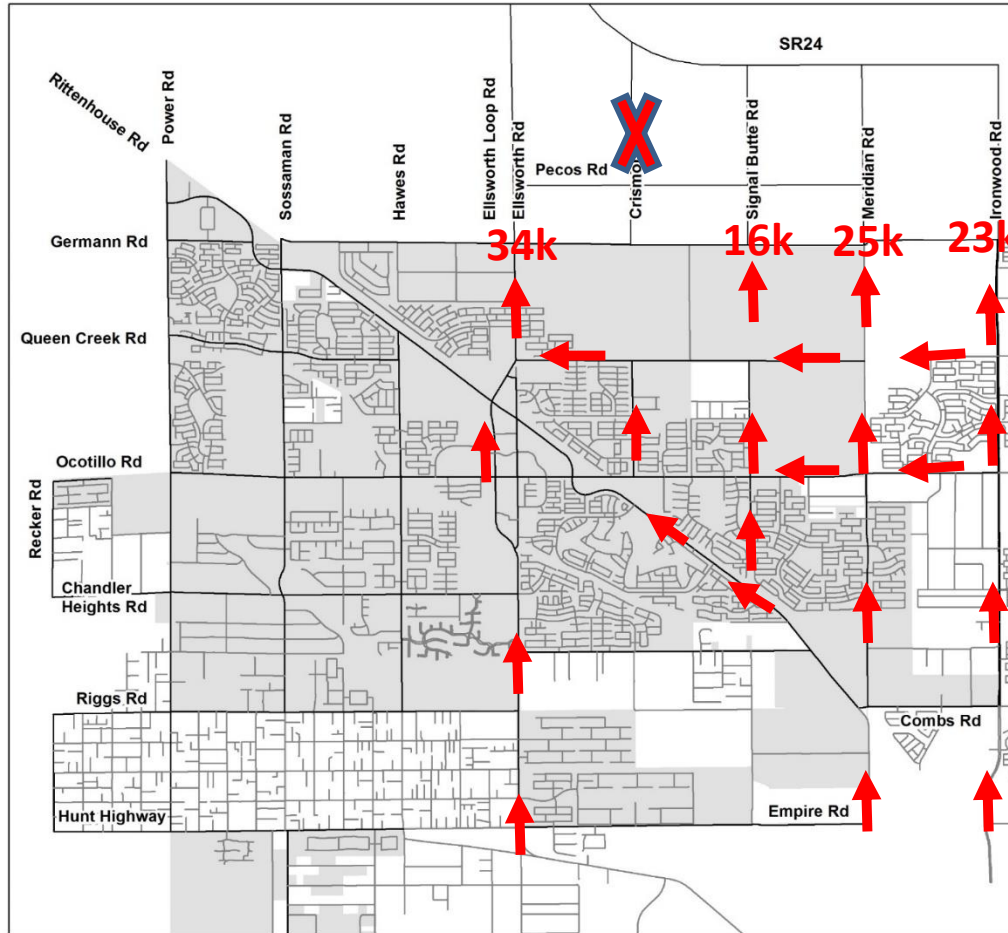
SR 24 with an interchange at Ironwood and Meridian Roads, provides significant relief to Ellsworth Road congestion.



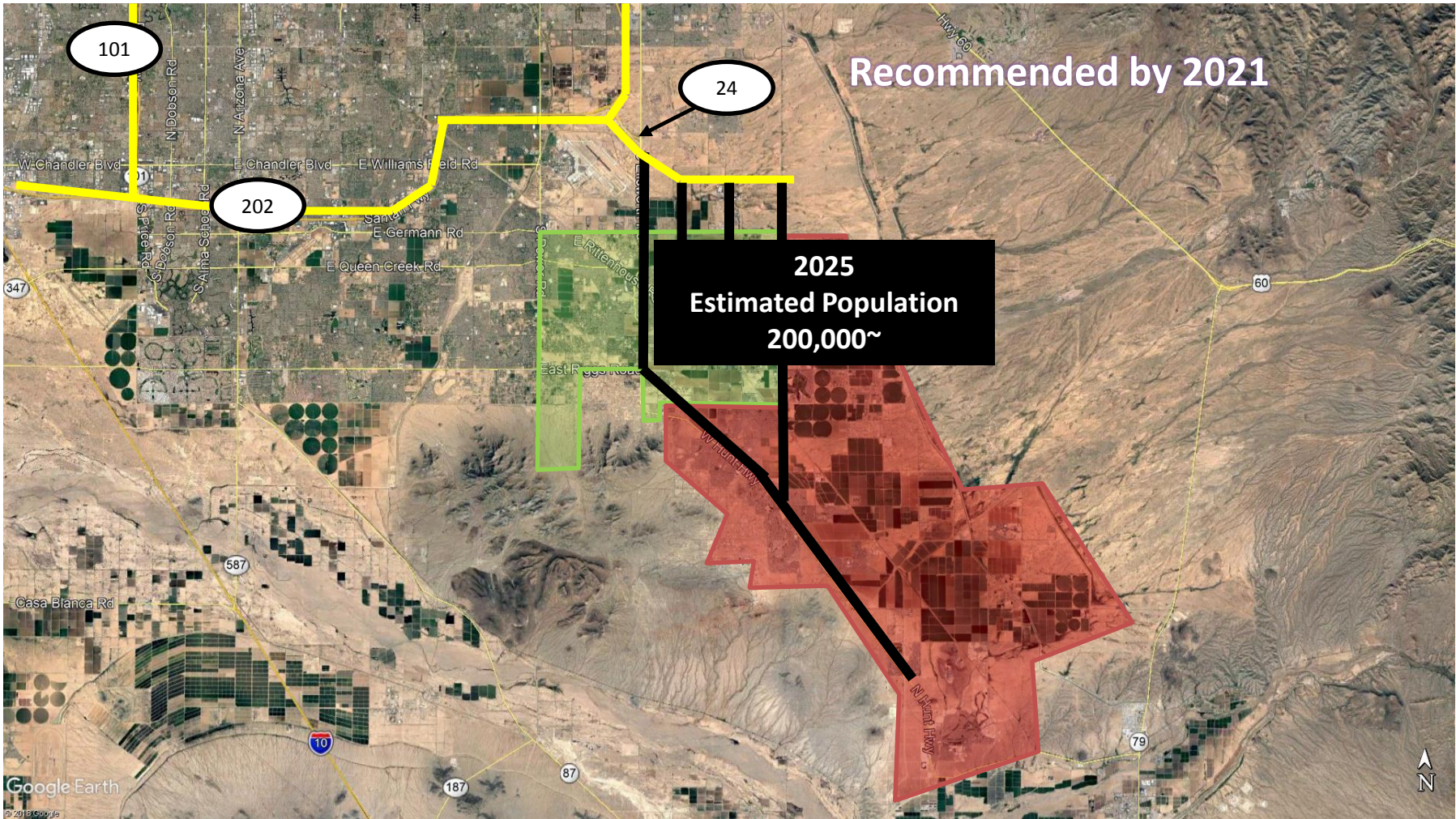
San Tan Valley
105,000

SR 24 Ironwood Road, Signal Butte, and Meridian Interchanges

SR 24 with an interchange at Ironwood, Meridian, and Signal Butte Roads provides optimum relief to the Town's roadway network.



San Tan Valley
105,000



101

24

202

**2025
Estimated Population
200,000~**

Recommended by 2021