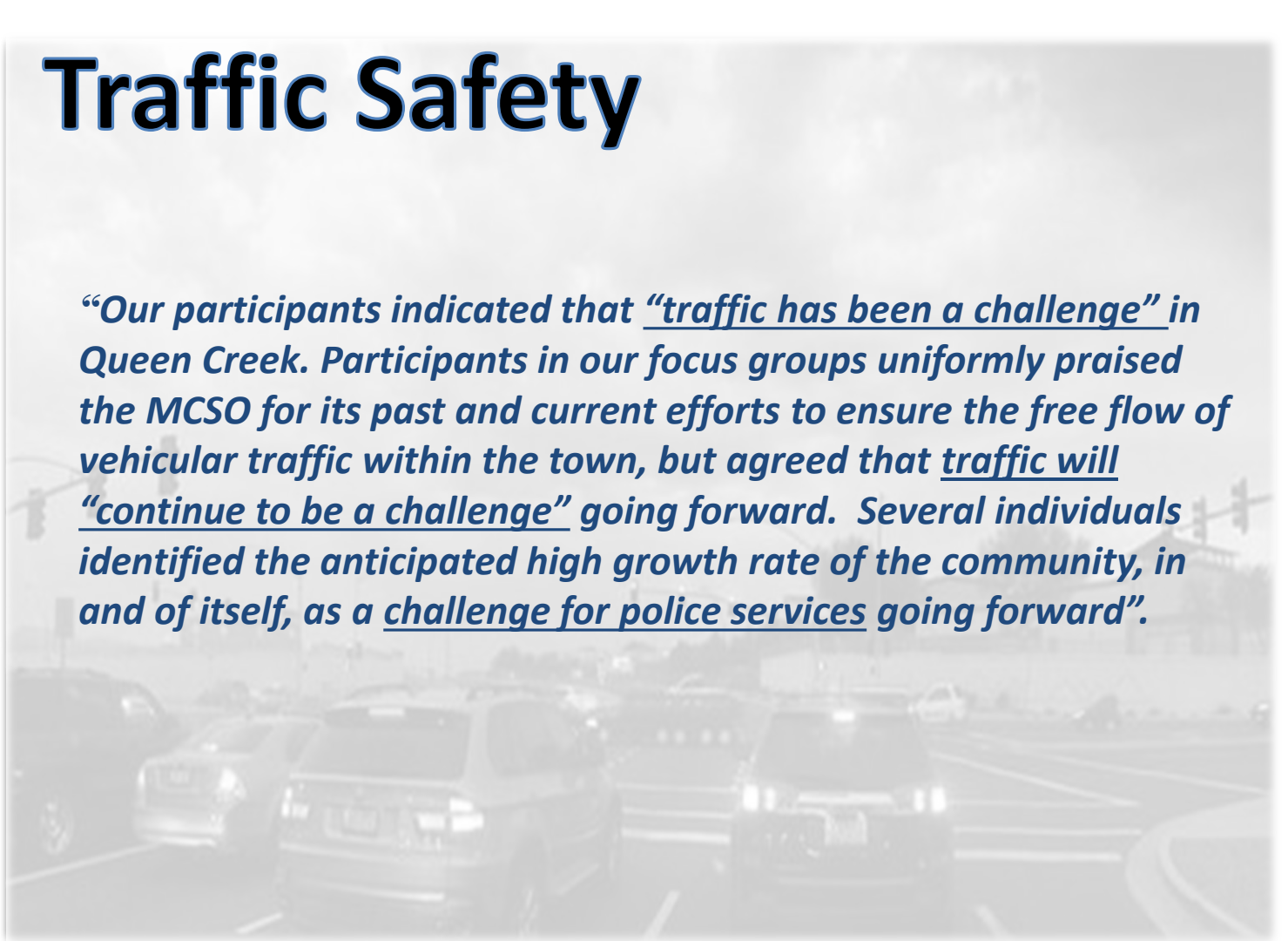


Traffic Safety

“Our participants indicated that “traffic has been a challenge” in Queen Creek. Participants in our focus groups uniformly praised the MCSO for its past and current efforts to ensure the free flow of vehicular traffic within the town, but agreed that traffic will “continue to be a challenge” going forward. Several individuals identified the anticipated high growth rate of the community, in and of itself, as a challenge for police services going forward”.





Traffic Safety Topics

- **Strategic Outcome #2 (Traffic)**
- **Traffic Sergeant Initiative Update**
- **Traffic Enforcement Statistics Update**
- **Traffic Collisions Update**
- **5- Options for Queen Creek to consider including a Traffic Enforcement Unit**



Law Enforcement

Strategic Plan Outcome #2

- **DDACTS Approach (Collision Analysis)**
- **Cooperative Effort with QC Traffic Engineer**
- **Traffic Enforcement is Patrol Priority**
- **Responsive to Traffic Complaints**
- **Quarterly Enhanced Traffic Enforcement Month**
- **Formalized Traffic Initiative for High Volume Collisions**
- **Provide Resources, Equipment and Training**
- **SRO's to Conduct Traffic Education Classes**

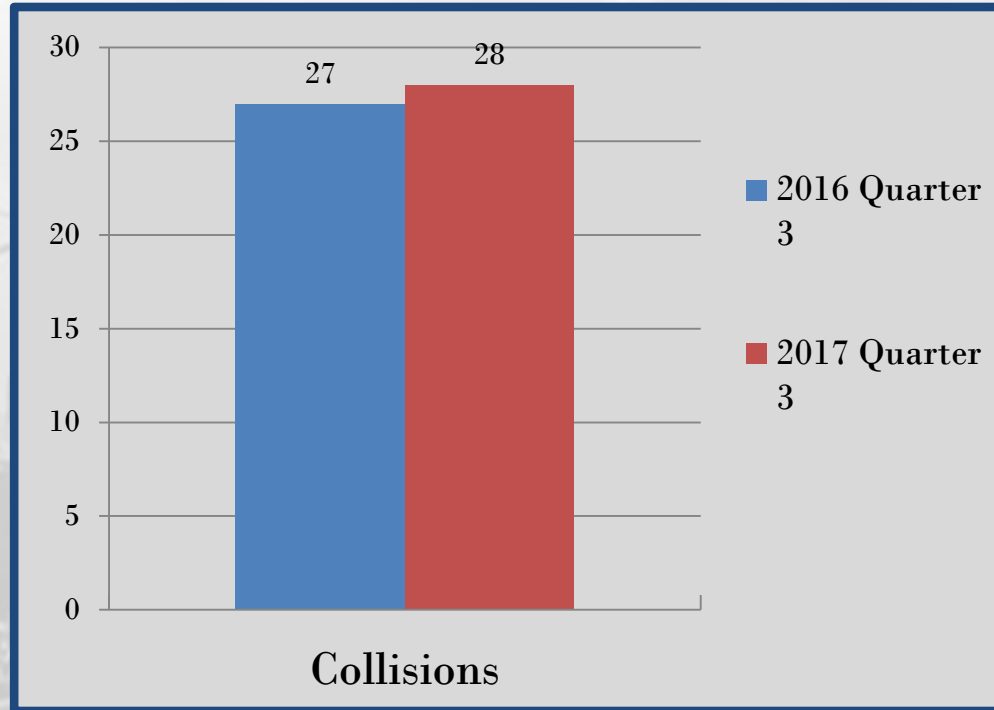
Traffic Initiative

- **Pilot Program: July to December 2017**
- **Focus is on Distracted Drivers/Speed (Collision Causation)**
- **The Business District Triangle; Ocotillo-Rittenhouse, Ocotillo-Ellsworth Loop, Ellsworth Loop-Rittenhouse**
- **Established Traffic Zones due to Volume of Collisions**
- **Time Periods of 6-10 am, and 3-7pm**
- **Designated Patrol and Community Service Deputies**
- **Split Shifts for Commuter Traffic by Deputy**
- **Community Services Sergeant Oversees Initiative**

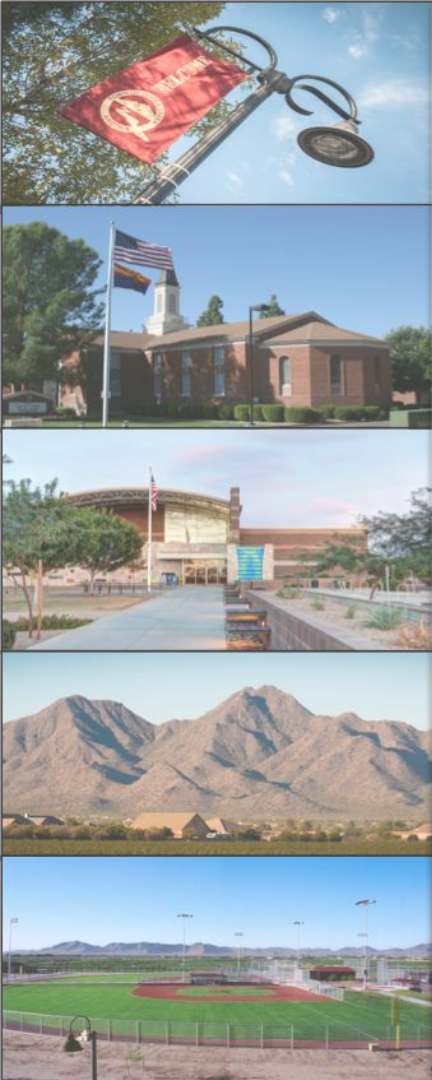


Traffic Initiative

Collision Figures

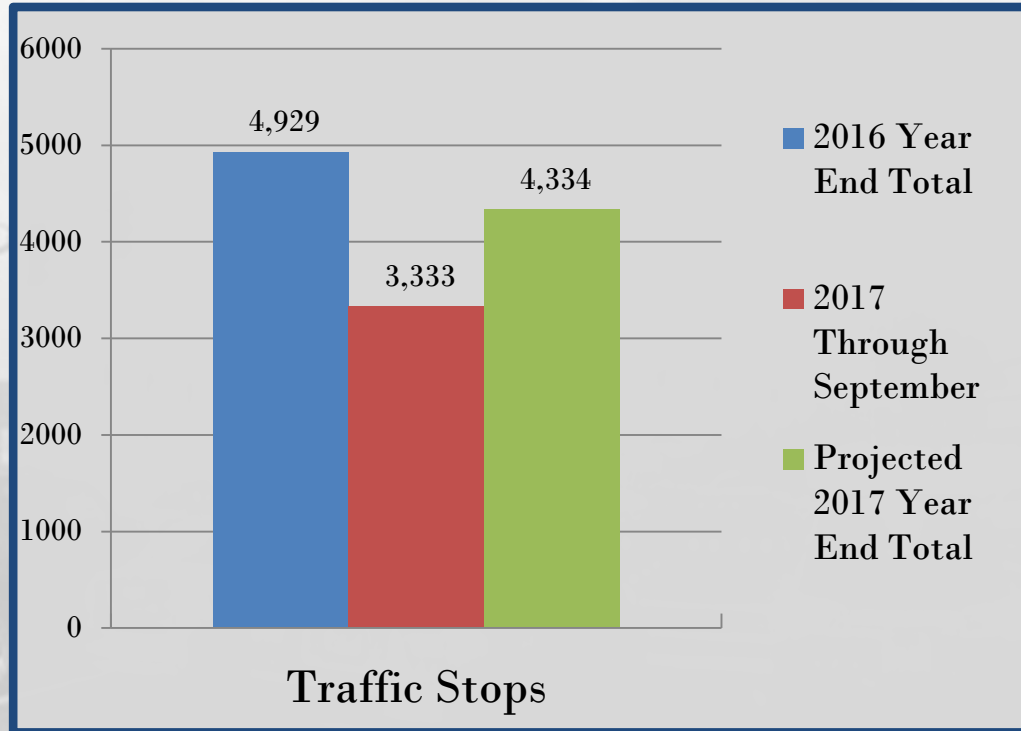


3.7% increase in collisions in quarter 3 of this year compared to the same time period last year.

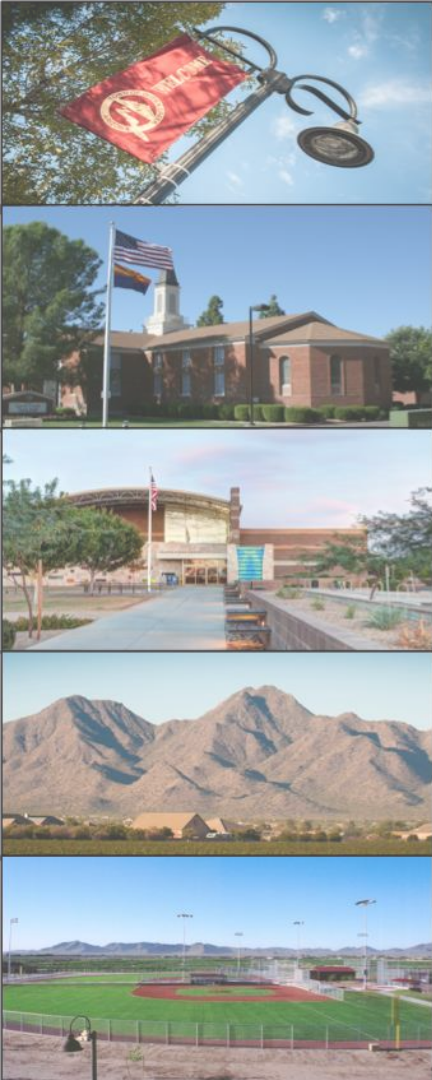


Traffic Enforcement

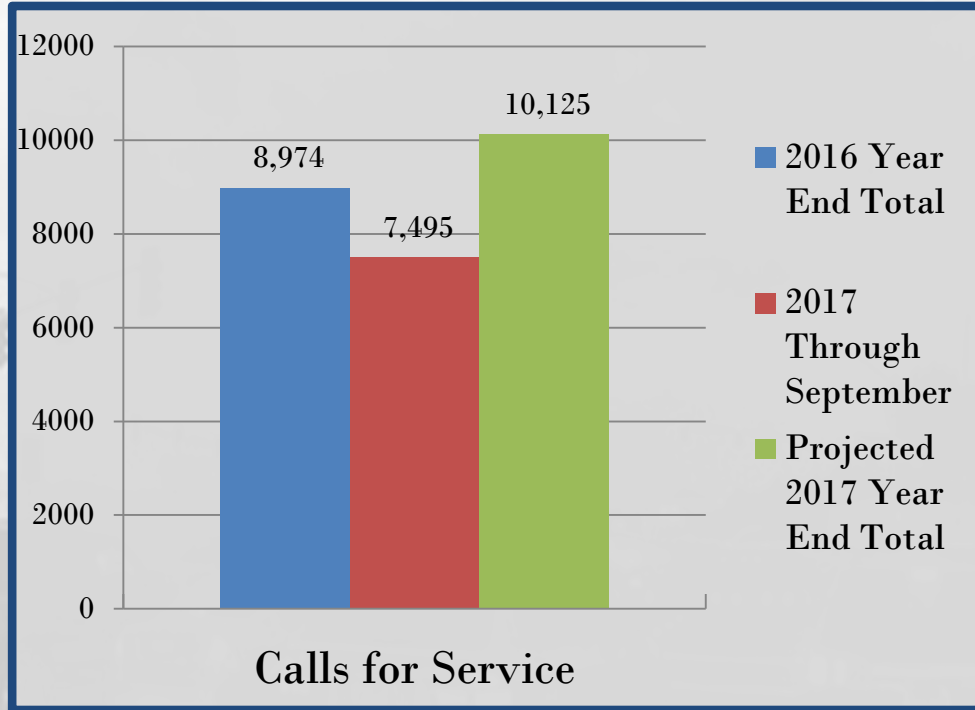
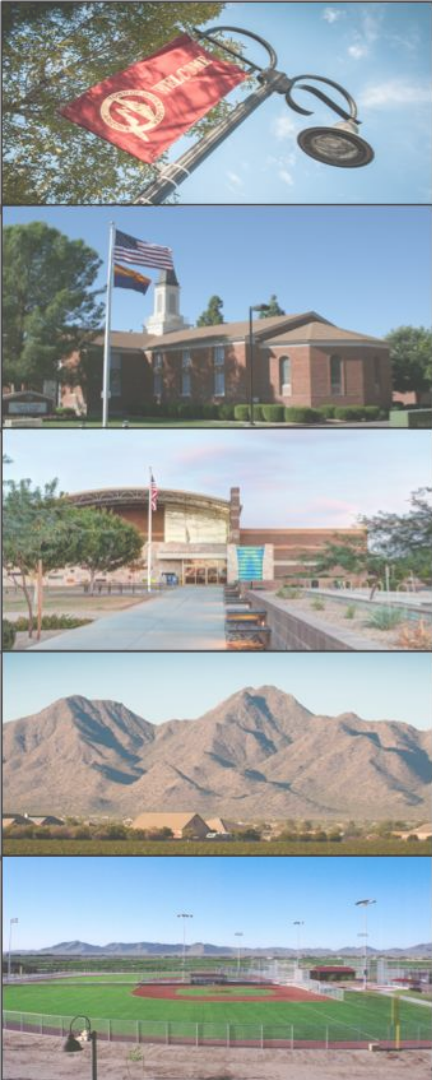
Traffic Stop Figures



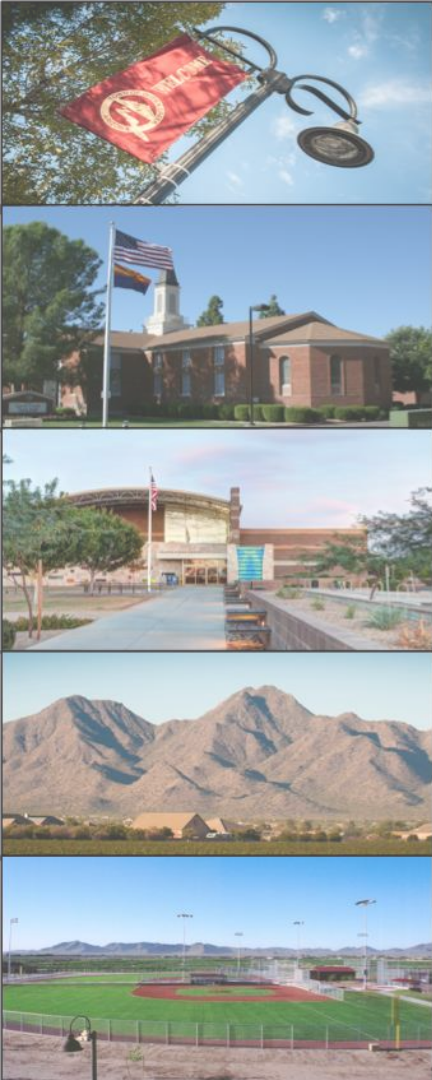
A 12.1% decrease in traffic stops is projected in 2017 compared to 2016.



Calls for Service



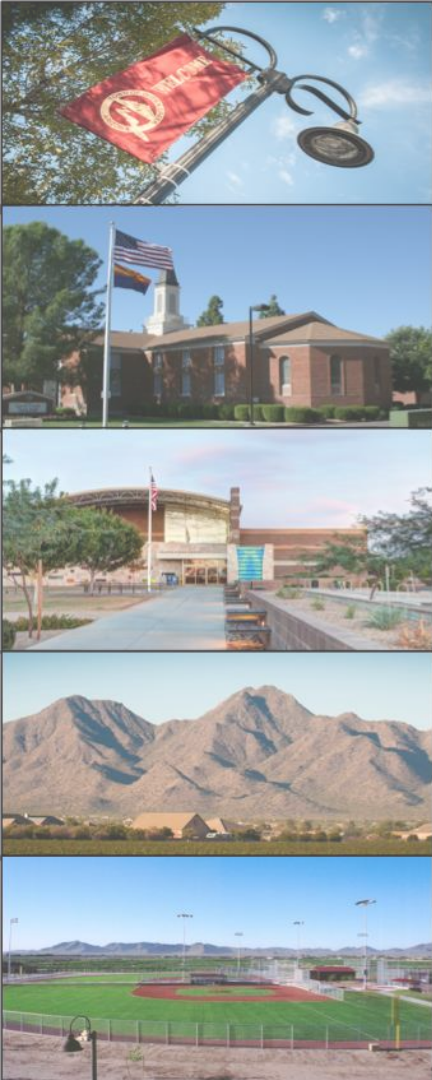
A 12.8% increase in Calls for Service is projected in 2017 compared to 2016.



Traffic Enforcement

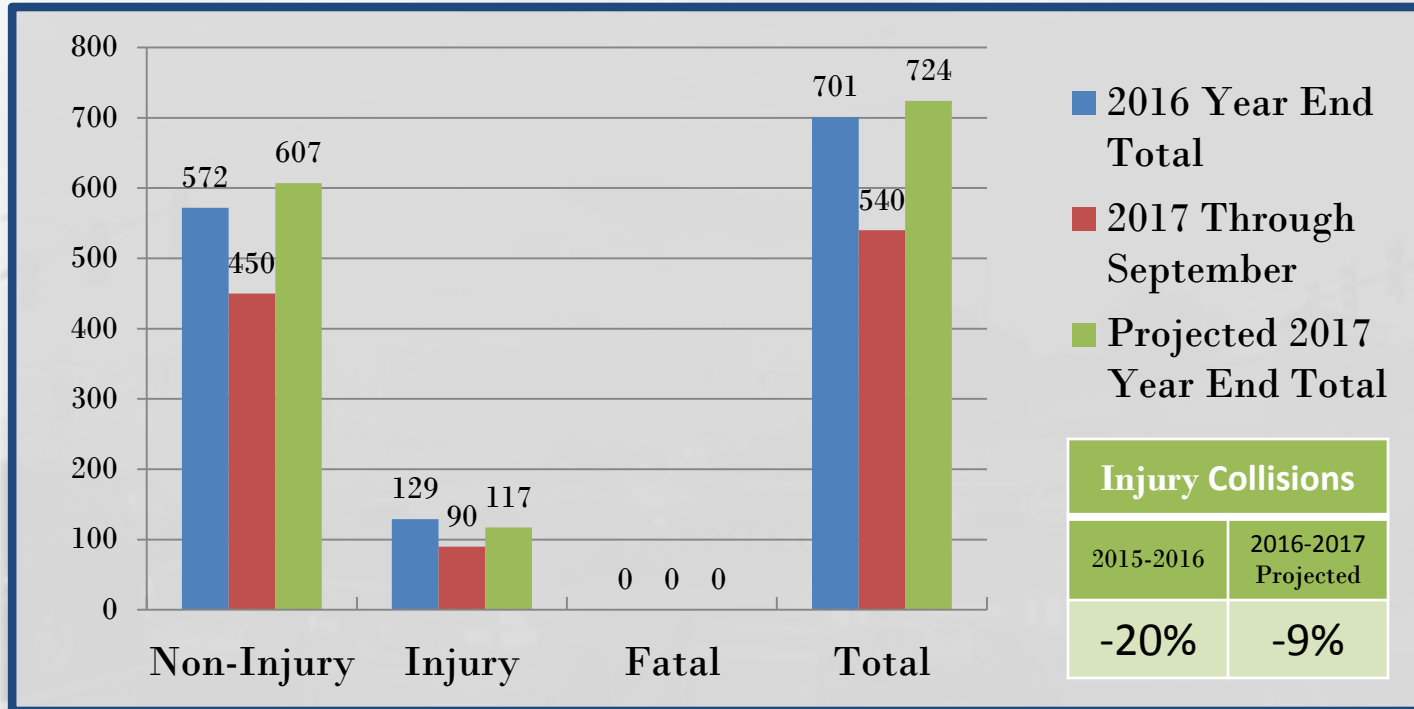
Citation Breakdown

| | 2016 Total | 2017 through September | 2017 Projected Total |
|---|------------|------------------------|----------------------|
| Speed Related Violations | 1766 | 1496 | 2014 |
| Non-Moving Violations | 2013 | 1424 | 1902 |
| Stop Sign/Red Light Violations | 355 | 155 | 191 |
| Unsafe Lane Usage/Following Too Closely | 51 | 22 | 24 |
| School Related Violations | 289 | 44 | 59 |
| Turning Violations | 121 | 62 | 79 |
| Misc Moving Violations | 75 | 84 | 115 |
| DUI | 55 | 39 | 50 |



Traffic Collisions

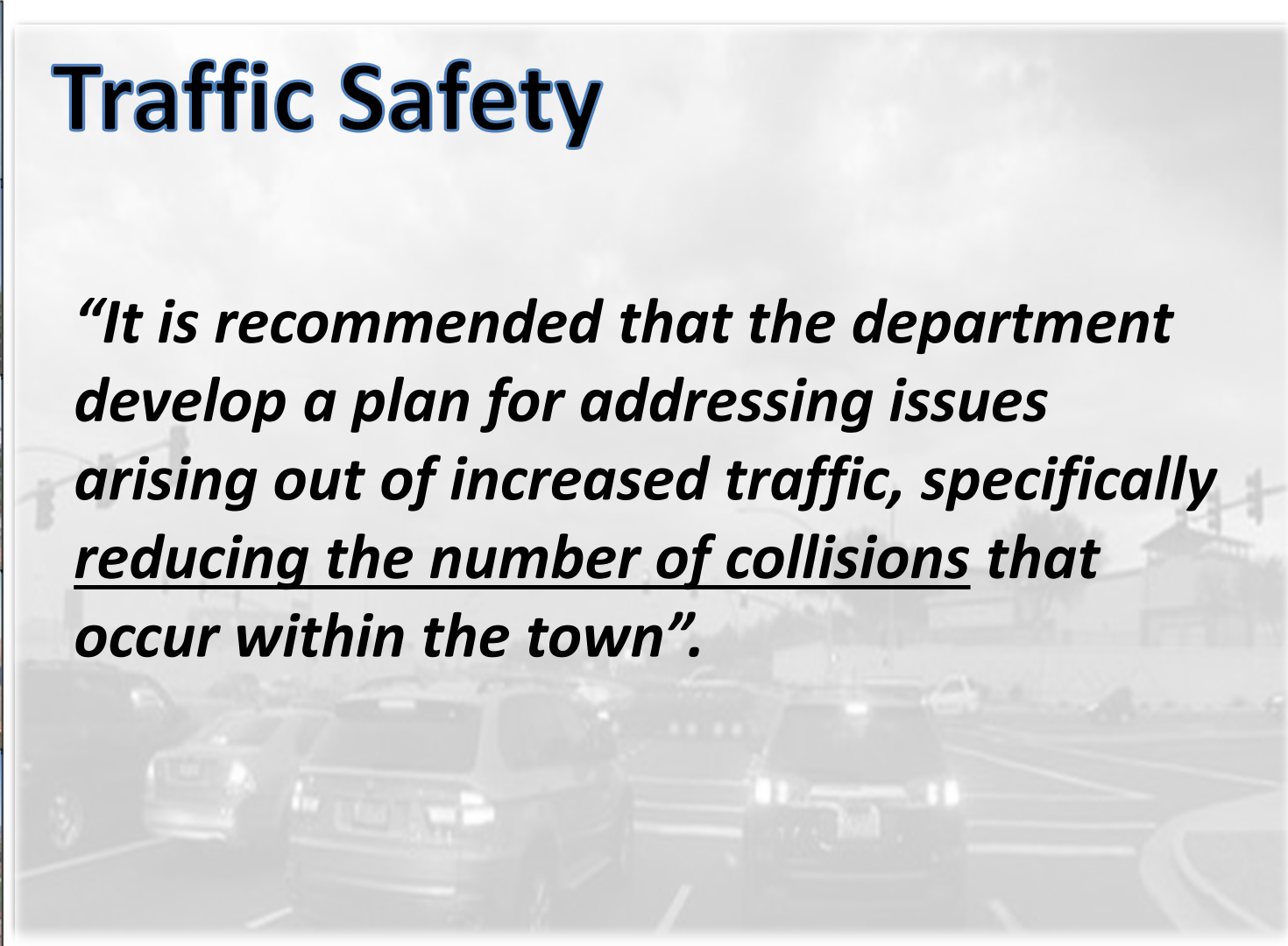
Where we've been





Traffic Safety

“It is recommended that the department develop a plan for addressing issues arising out of increased traffic, specifically reducing the number of collisions that occur within the town”.



Scenario 1

Schedule & Traffic Coverage

- Amendment to Law Enforcement Contract not Necessary
- No additional Staff Requested
- Continue Traffic Enforcement Strategies with Existing Staff



Scenario 2

Schedule & Traffic Coverage

- 1 Sergeant, 24% Dedicated Traffic Enforcement Coverage

| Deputies | Schedule |
|----------|------------------------|
| 1 | Sergeant Various Hours |

| | Coverage |
|---|--------------------------------------|
| ✓ | Morning & Evening Commuters |
| ✓ | School Zones |
| ✓ | Construction Zones |
| ✓ | DUI – Late night |
| | Special Events |
| | Commander on day shift & night shift |



Scenario 3

Schedule & Traffic Coverage

- 2 Deputies, 1 Sergeant, 47% Dedicated Traffic Enforcement Coverage

| Deputies | Schedule |
|----------|------------------------|
| 1 | M, T, W, Th 6am-4pm |
| 1 | F, S, S, M 3pm-1am |
| 1 | Sergeant Various Hours |

| | Coverage |
|---|--------------------------------------|
| ✓ | Morning & Evening Commuters |
| ✓ | School Zones |
| ✓ | Construction Zones |
| ✓ | DUI – Late night |
| | Special Events |
| | Commander on day shift & night shift |



Scenario 4

Schedule & Traffic Coverage

- **3 Deputies, 1 Sergeant, 63% Dedicated Traffic Enforcement Coverage**

| Deputies | Schedule |
|----------|-------------------------------|
| 2 | T, W, Th, F 6am-4pm & 3pm-1am |
| 1 | F, S, S, M 3pm-1am |
| 1 | Sergeant Various Hours |

| | Coverage |
|---|--------------------------------------|
| ✓ | Morning & Evening Commuters |
| ✓ | School Zones |
| ✓ | Construction Zones |
| ✓ | DUI – Late night |
| | Special Events |
| | Commander on day shift & night shift |



Scenario 5

Schedule & Traffic Coverage

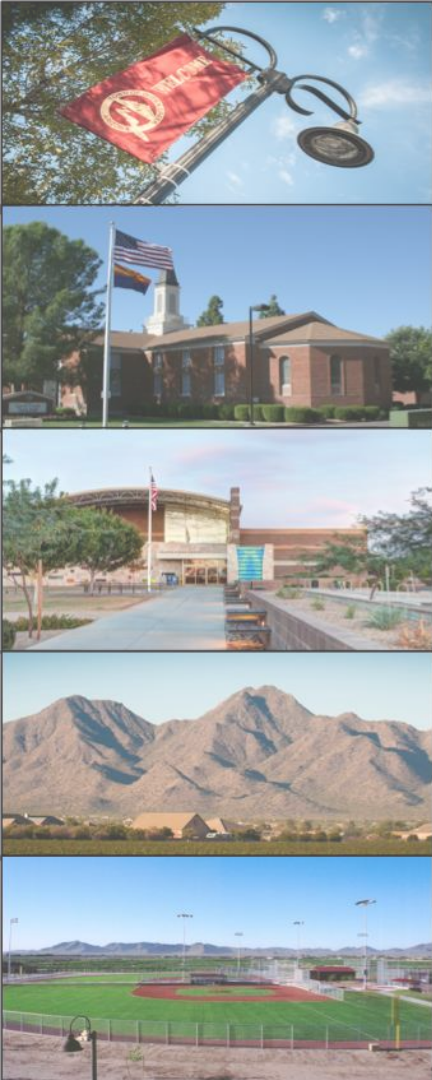
- 1 Lieutenant, 1 Sergeant, 5 Deputies, 80% Traffic Enforcement Coverage

| Deputies | Schedule | | Coverage |
|----------|-------------------------------|---|--------------------------------------|
| 2 | T, W, Th, F 6am-4pm & 3pm-1am | ✓ | Morning & Evening Commuters |
| 2 | F, S, S, M 6am-4pm & 3pm-1am | ✓ | School Zones |
| 1 | Relief & Special Events | ✓ | Construction Zones |
| 1 | Sergeant Various Hours | ✓ | DUI – Late night |
| 1 | Lieutenant 3-pm-1am | ✓ | Special Events |
| | | ✓ | Commander on day shift & night shift |



Preliminary Cost Estimates

July 1, 2018 through June 30, 2019



| Scenario | Total Cost | One Time (refresh or new) | Operating |
|---|-------------|---------------------------|-------------|
| Base Worksheet | \$6,496,500 | \$140,000 | \$6,356,500 |
| Increase one Sergeant FTE | \$6,752,755 | \$227,199 | \$6,525,556 |
| Increase one Sergeant FTE plus 2 deputies (.4 beat) | \$7,207,174 | \$401,392 | \$6,805,781 |
| Increase one Sergeant FTE plus 3 deputies (.6 beat) | \$7,435,904 | \$488,489 | \$6,947,415 |
| Increase to six beats plus Lieutenant & Sergeant | \$8,159,942 | \$749,881 | \$7,410,061 |

| Operating Costs Breakdown | | | |
|---------------------------|----------|---------------------|-----------------|
| Personnel | Supplies | IT & Communications | Vehicle Charges |
| \$5,811,306 | \$64,791 | \$163,648 | \$316,756 |
| \$5,967,802 | \$66,335 | \$166,684 | \$324,735 |
| \$6,224,110 | \$69,424 | \$171,556 | \$340,691 |
| \$6,353,784 | \$70,968 | \$173,993 | \$348,670 |
| \$6,780,338 | \$75,601 | \$181,517 | \$372,605 |

Staffing Considerations

- **Population Growth Queen Creek/Region**
- **Banner Ironwood Hospital Annexation**
- **Ironwood Crossings Annexation**
- **Increase in Calls for Service**
- **Less Time for Traffic Enforcement**
- **Continued Commuter Traffic in Town**
- **Traffic Safety Concern**





Questions

