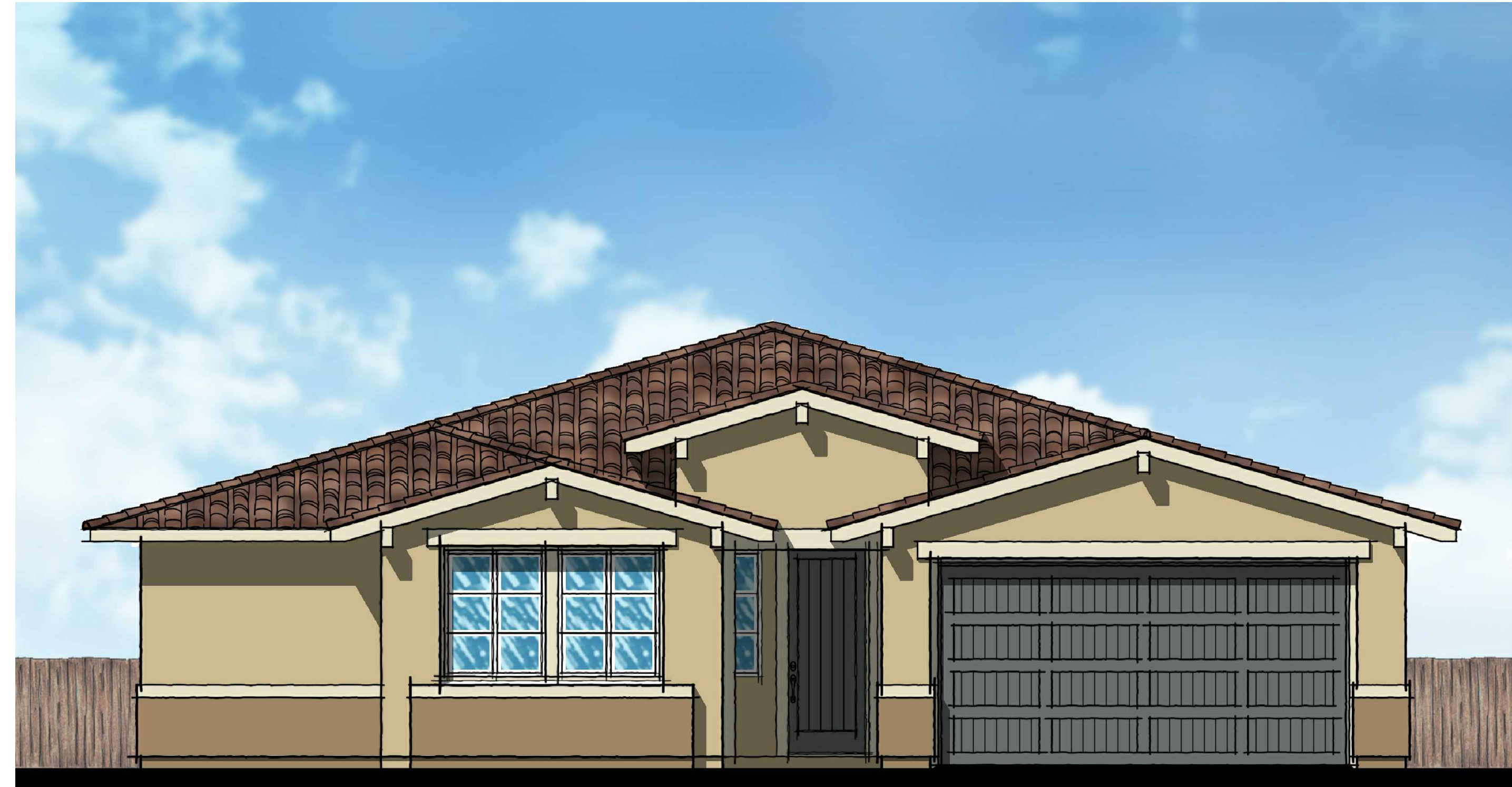


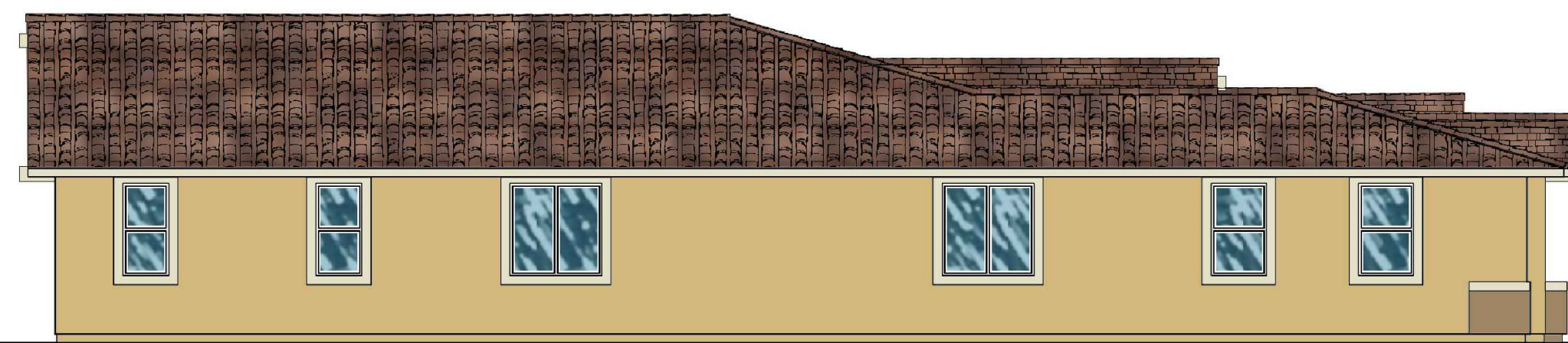
Roof Plan
1/8"=1'-0"



Front Elevation - Desert Ranch - Color Scheme 1
1/4"=1'-0"

Elevation Legend

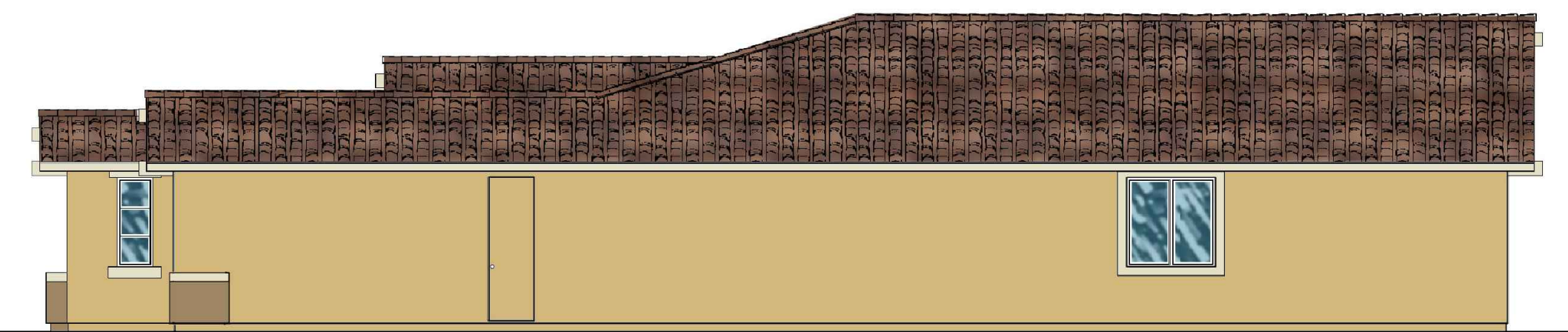
- Concrete "S" Tile Roof
- Stucco Exterior
- Stucco Over Foam Trim/Pop-Outs
- Roll-up Garage Doors



Left Side Elevation



Rear Elevation
1/8"=1'-0"

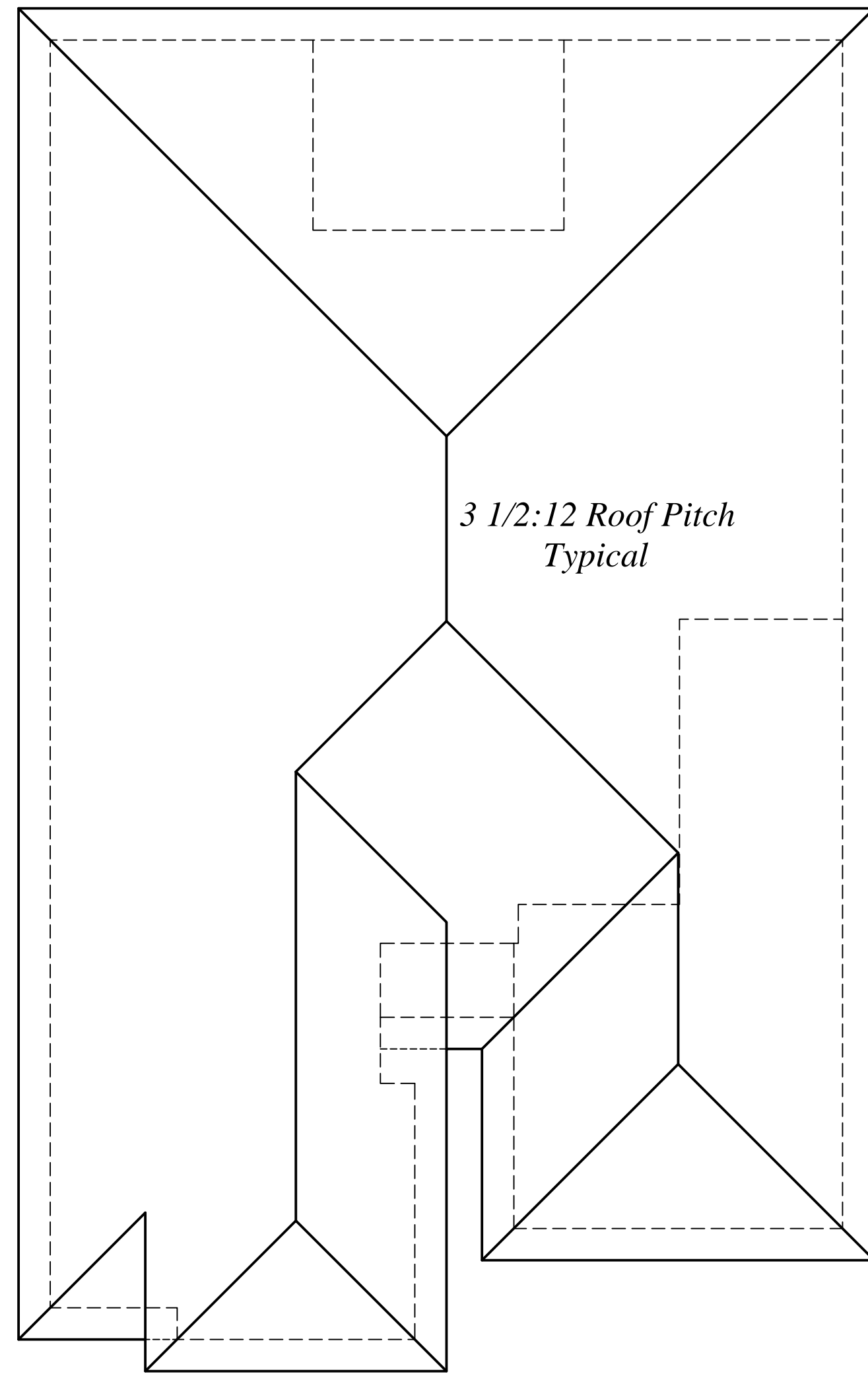


Right Side Elevation

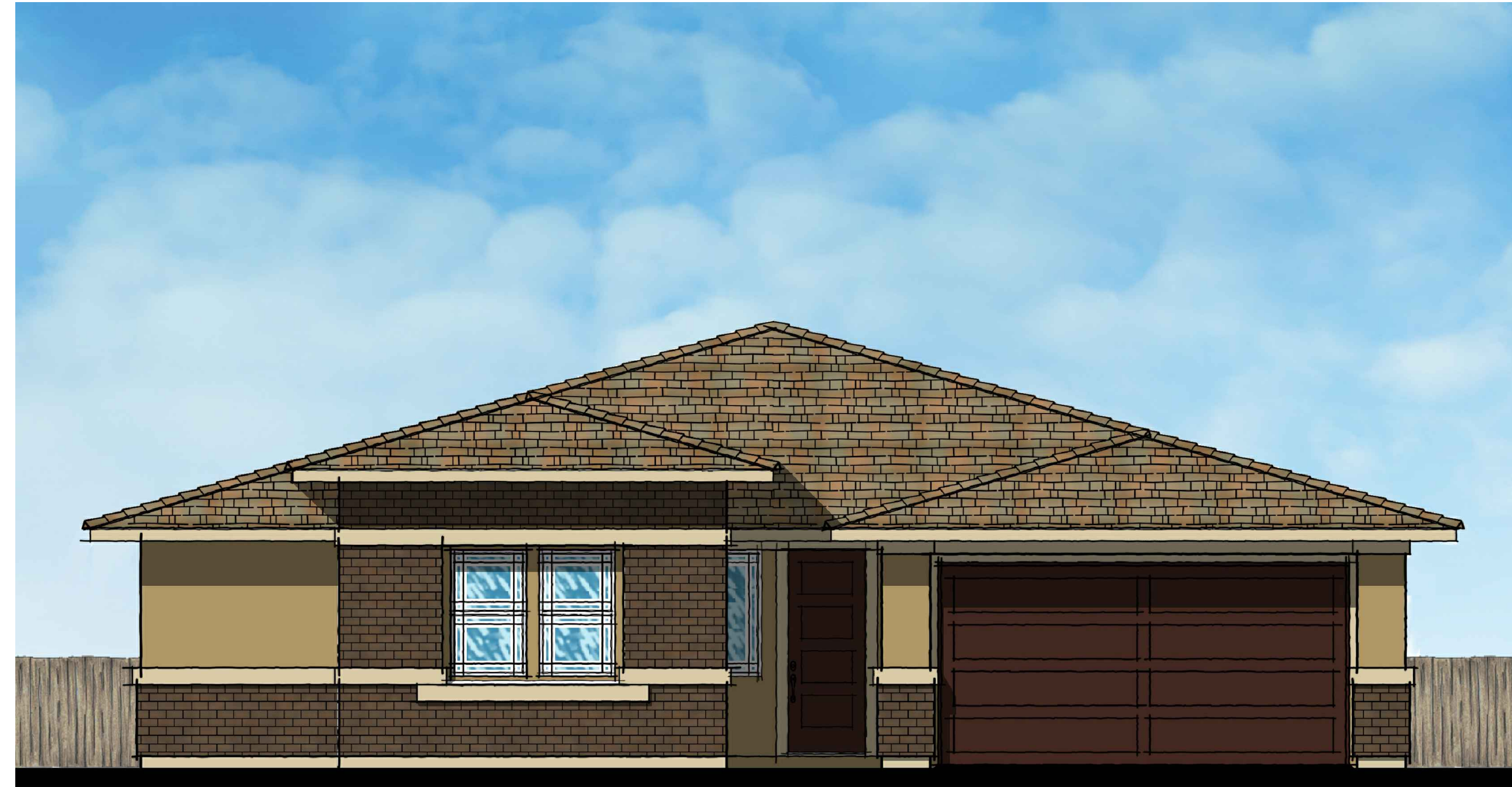
Residence 2905
Church Farm Series III / William Lyon Homes, Inc.



edingerArchitects



Roof Plan
1/8"=1'-0"



Front Elevation - Desert Prairie - Color Scheme 3
1/4"=1'-0"

Elevation Legend

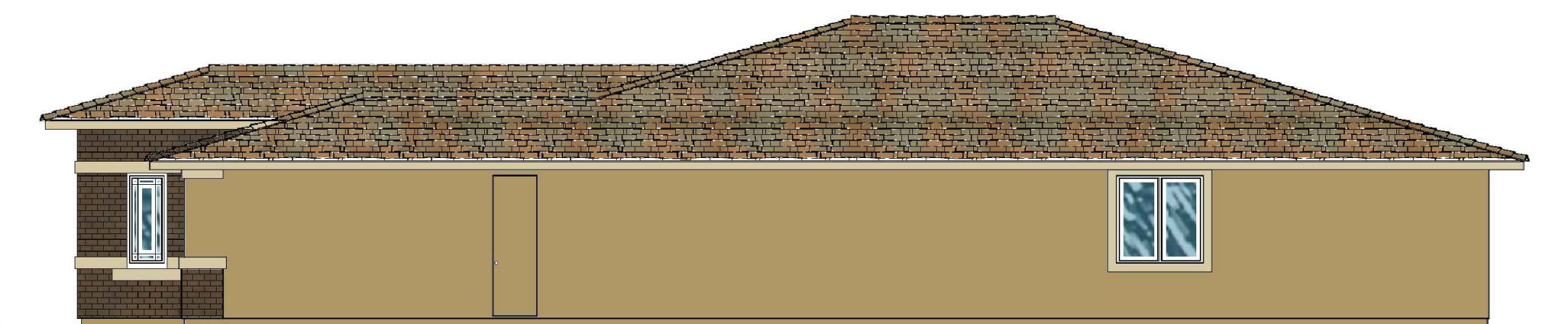
- Concrete "Flat" Tile Roof
- Stucco Exterior
- Stucco Over Foam Trim/Pop-Outs
- Brick Veneer
- Roll-up Garage Doors



Left Side Elevation



Rear Elevation
1/8"=1'-0"

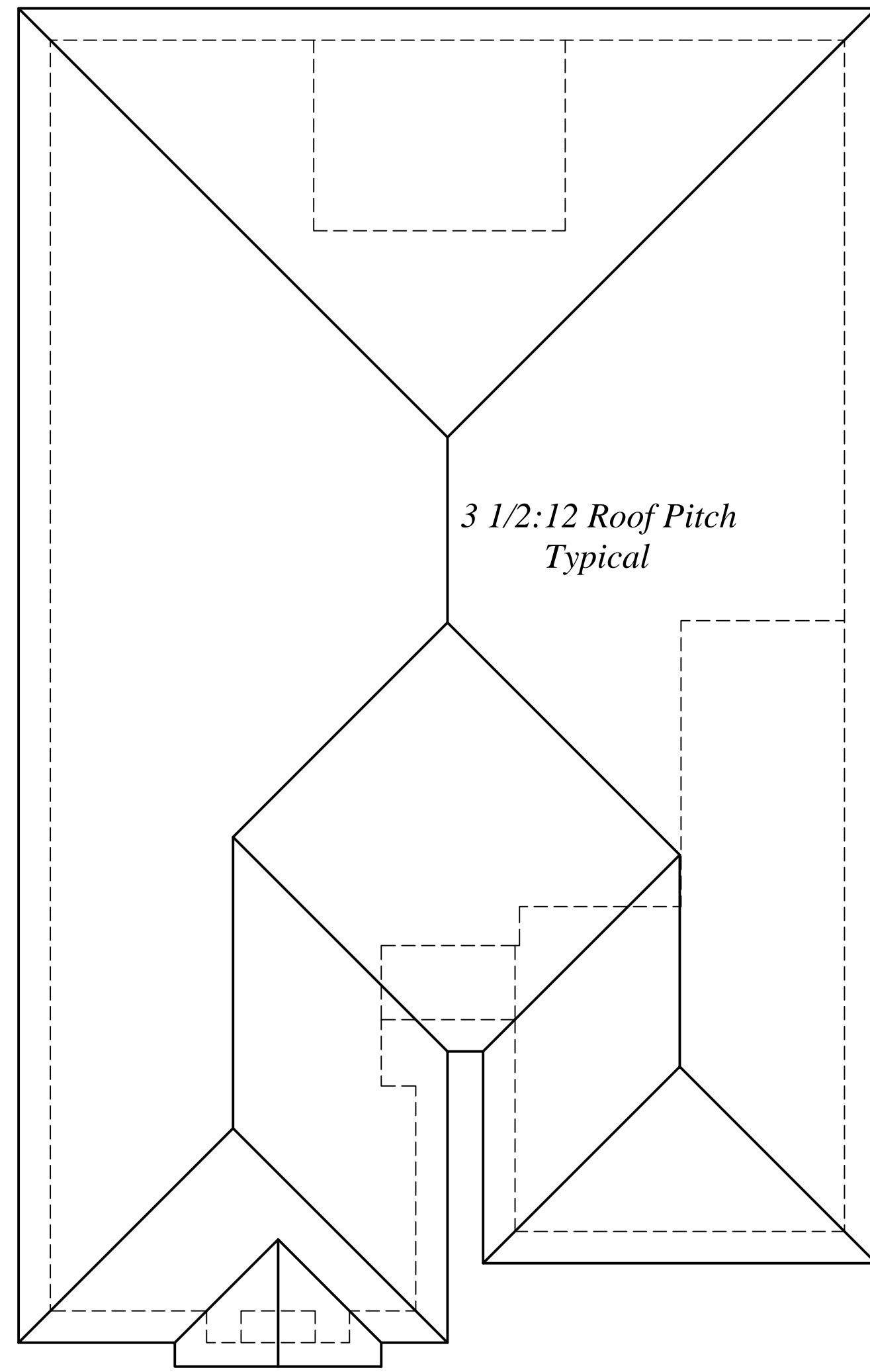


Right Side Elevation

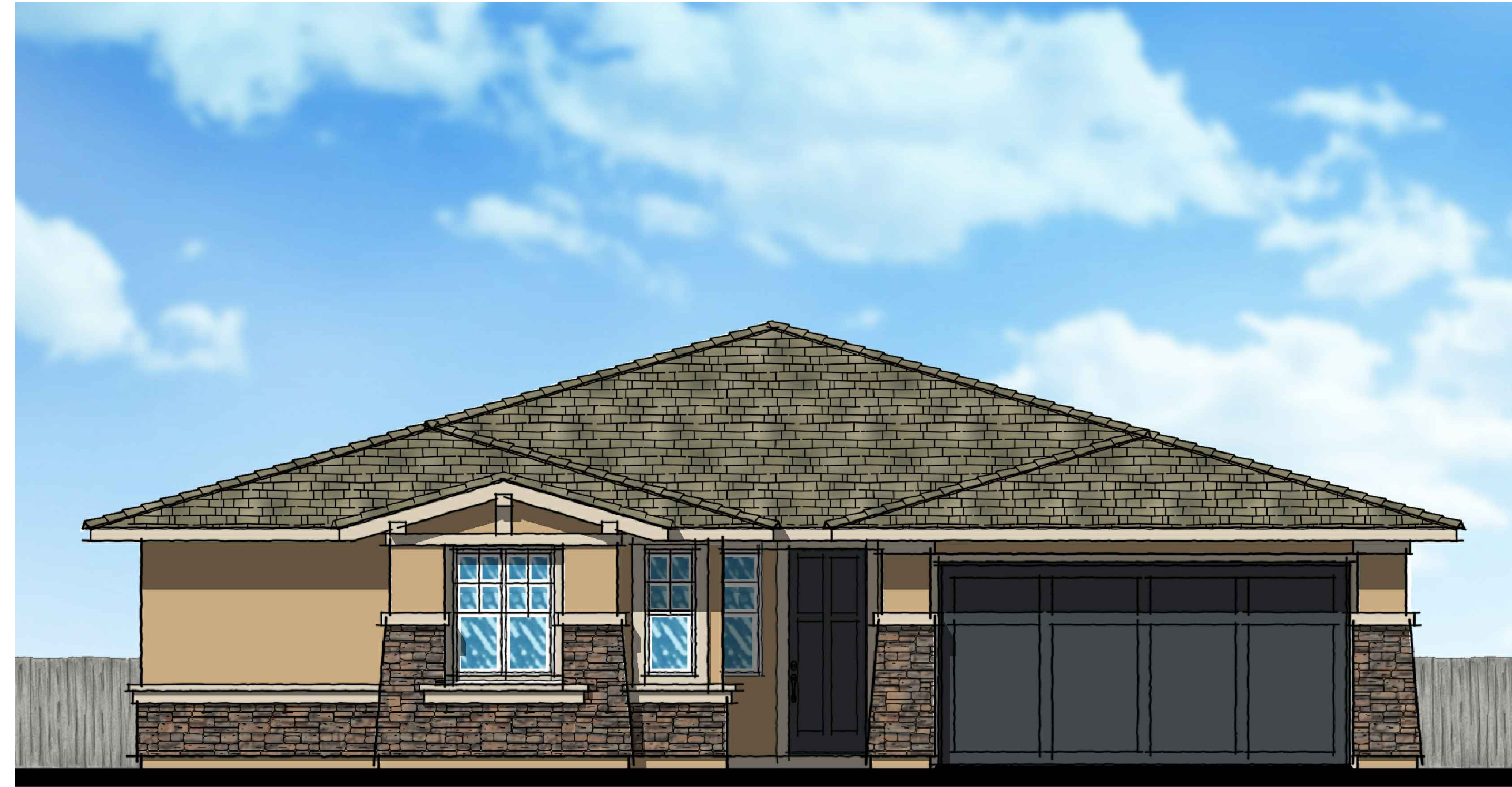
Residence 2905
Church Farm Series III / William Lyon Homes, Inc.



edingerArchitects



Roof Plan
1/8"=1'-0"



Front Elevation - Desert Bungalow - Color Scheme 10
1/4"=1'-0"

Elevation Legend

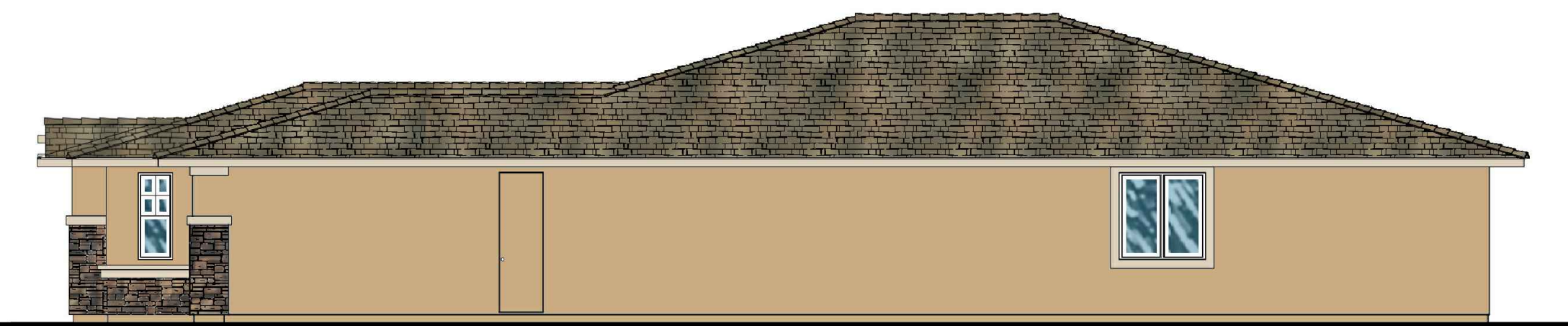
- Concrete "Flat" Tile Roof
- Stucco Exterior
- Stucco Over Foam Trim/Pop-Outs
- Stone Veneer
- Tapered Stone Columns
- Roll-up Garage Doors



Left Side Elevation



Rear Elevation
1/8"=1'-0"



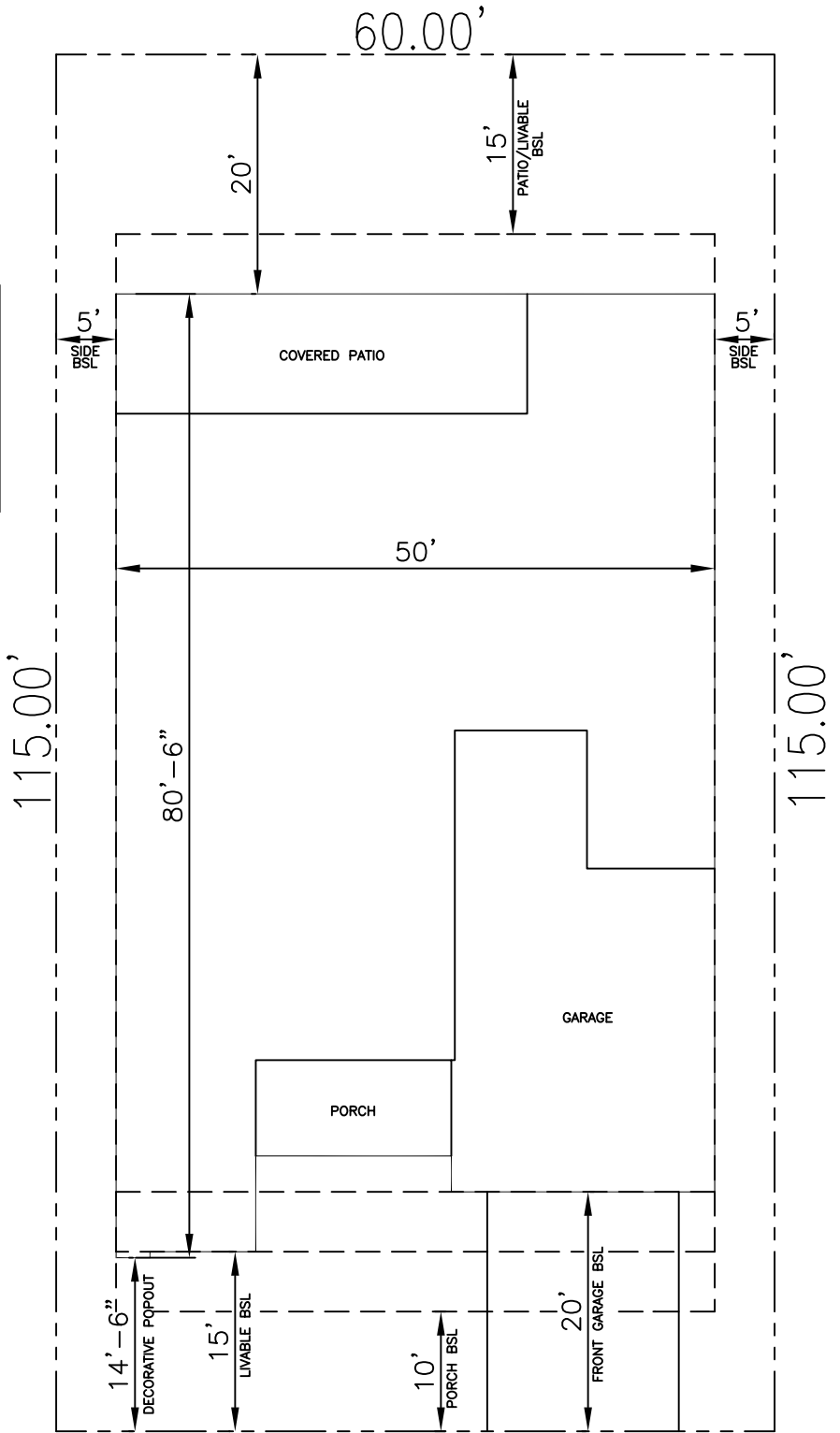
Right Side Elevation

Residence 2905
Church Farm Series III / William Lyon Homes, Inc.



edingerArchitects

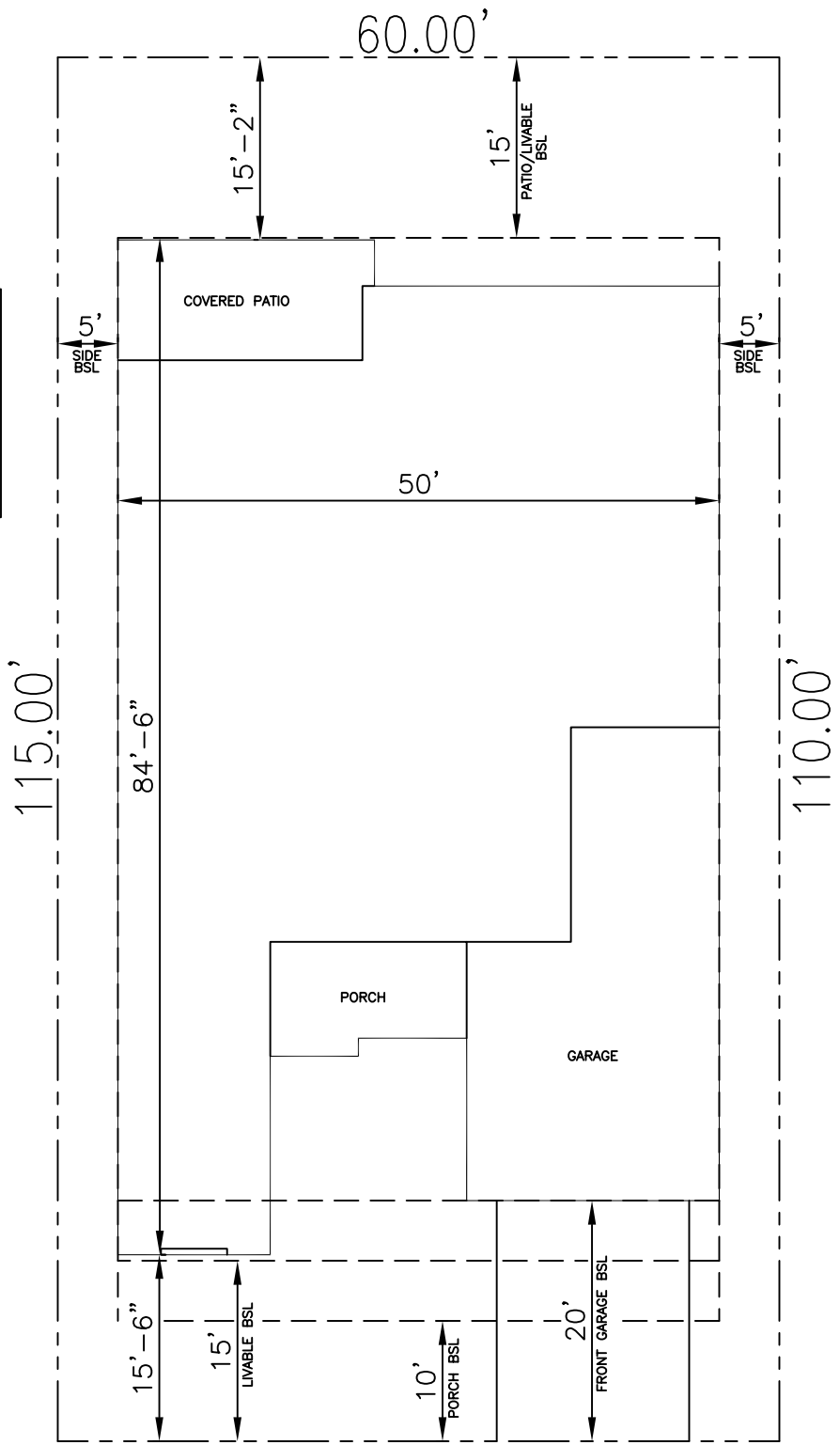
TYPICAL COVERAGE
 (6,900sf Lot)
 A: 54.5%
 B: 54.9%
 C: 54.9%



Plan 1 - Typical Plot
 1" = 15'

HARMONY at MERIDIAN 50'S

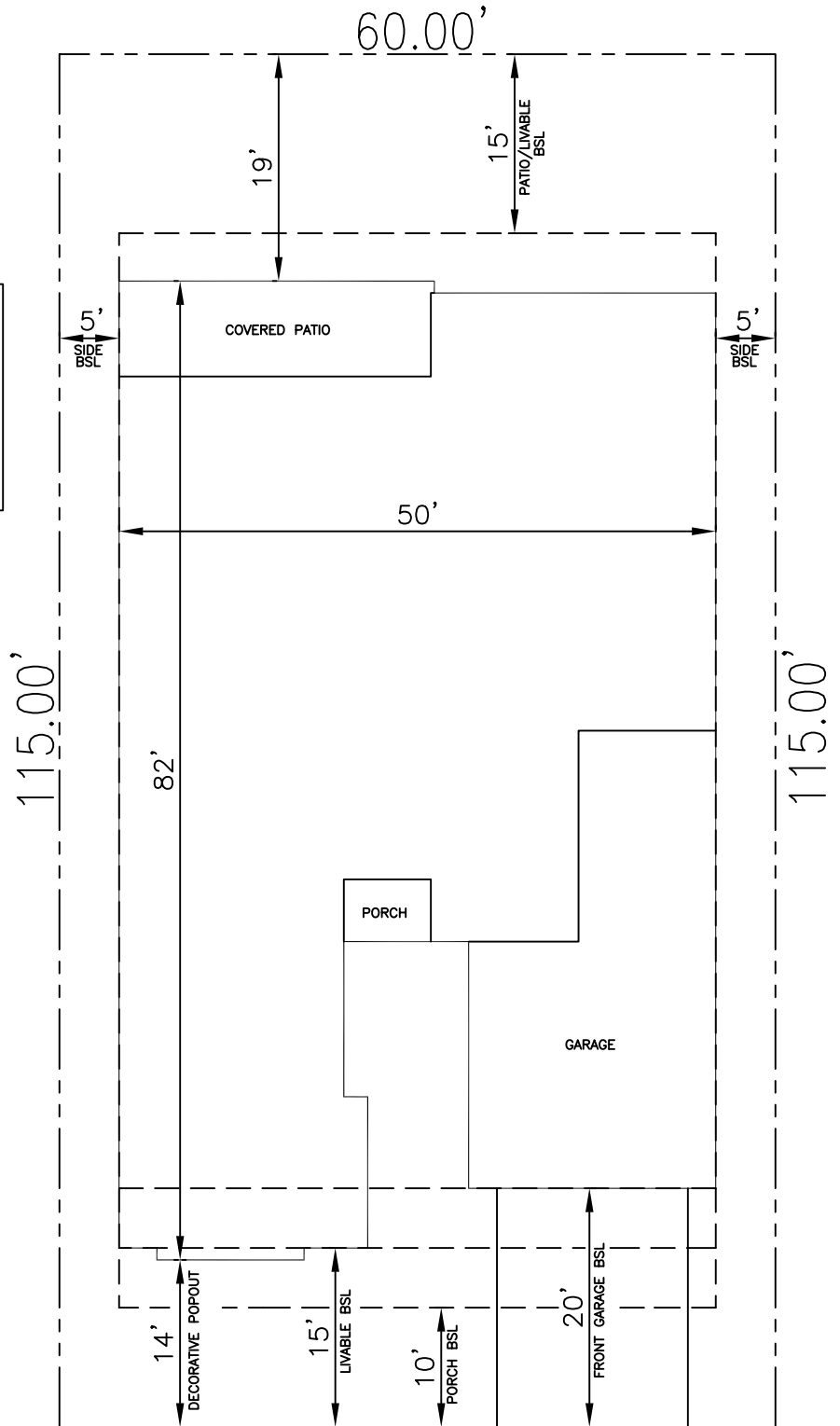
TYPICAL COVERAGE
 (6,900sf Lot)
 A: 54.0%
 B: 54.1%
 C: 54.1%



Plan 2 - Typical Plot
 1" = 15'

HARMONY at MERIDIAN 50'S

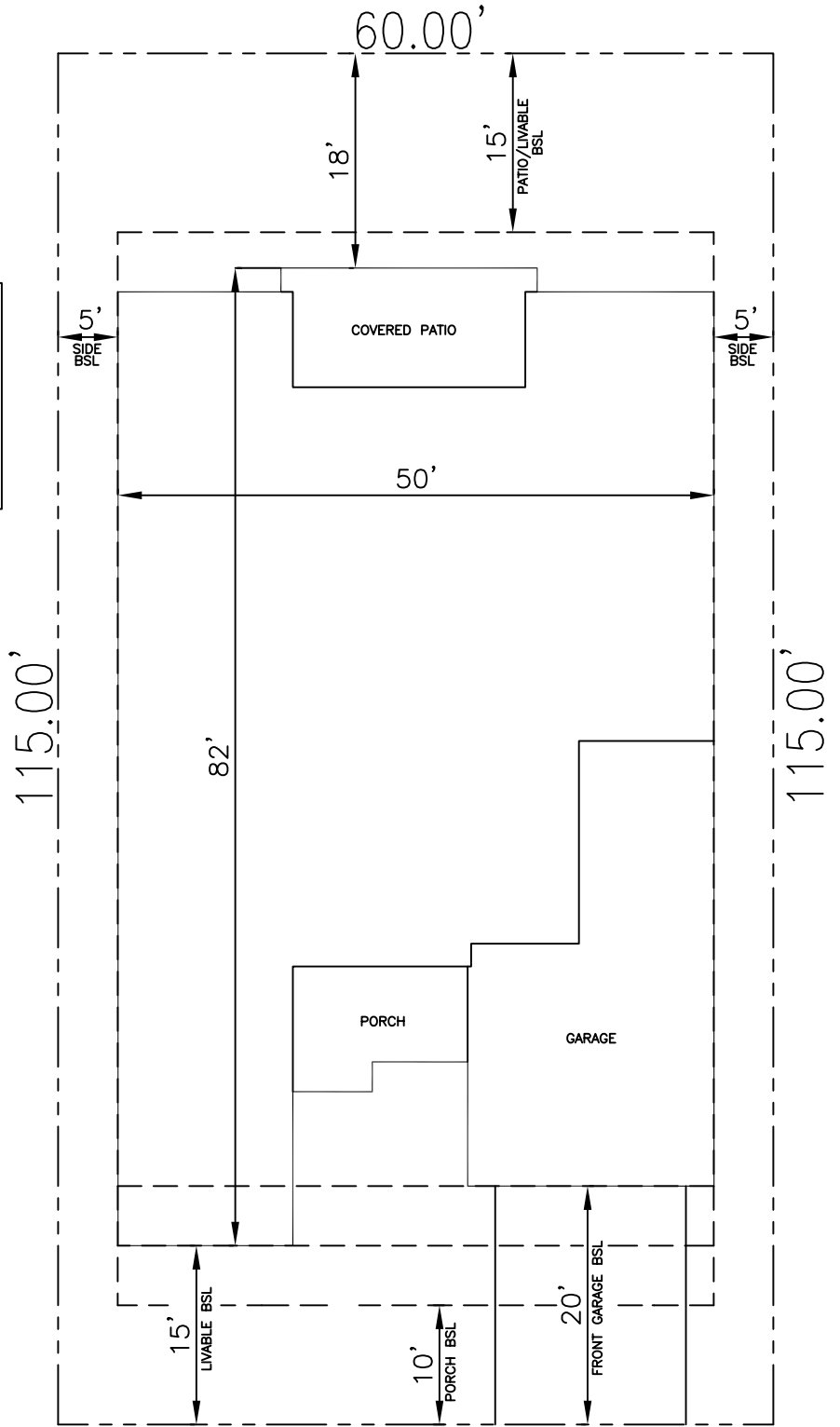
TYPICAL COVERAGE
 (6,900sf Lot)
 A: 53.5%
 B: 54.9%
 C: 53.6%



Plan 3 - Typical Plot
 1" = 15'

HARMONY at MERIDIAN 50'S

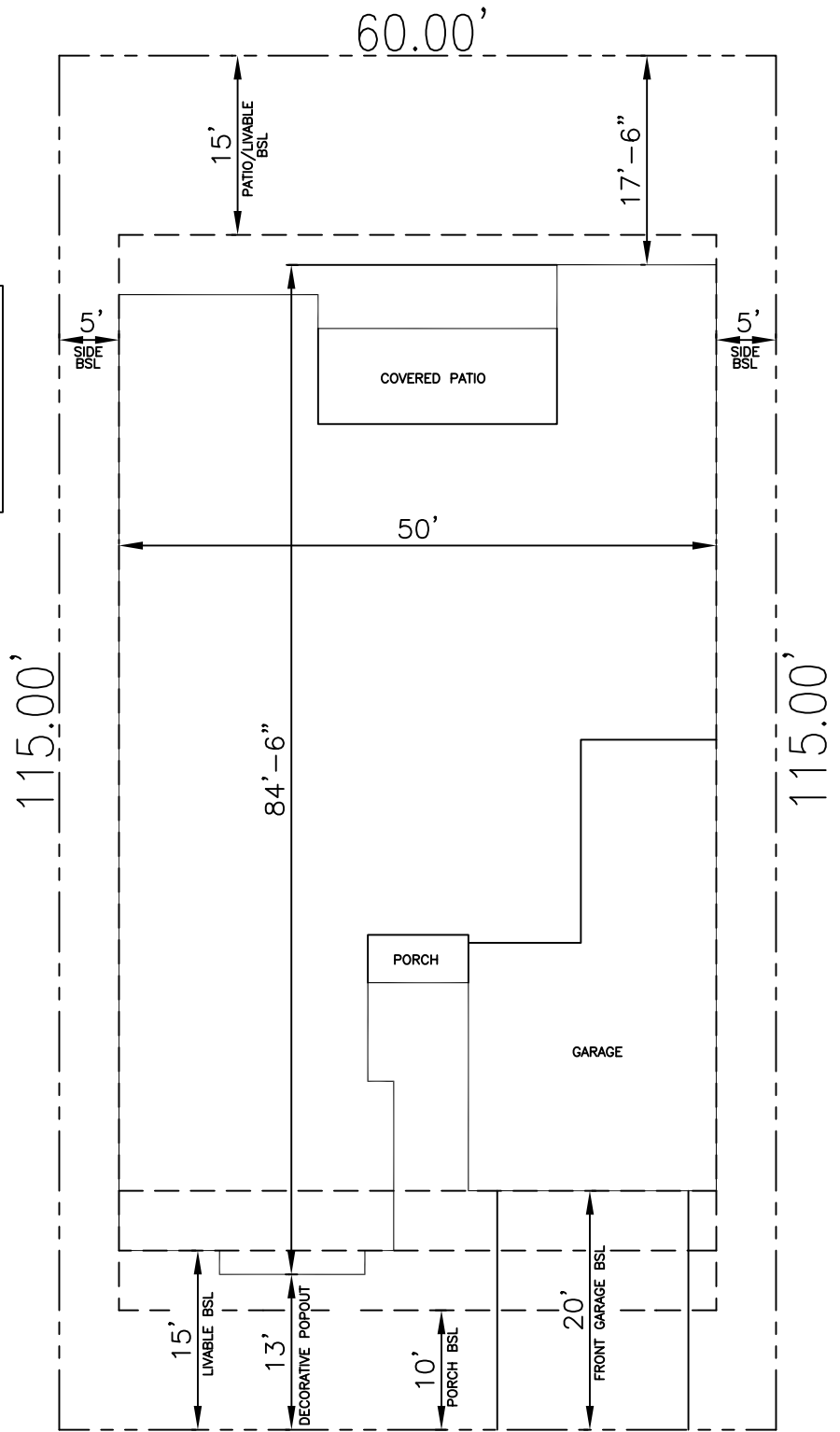
TYPICAL COVERAGE
 (6,900sf Lot)
 A: 54.0%
 B: 54.3%
 C: 54.5%



Plan 4 - Typical Plot
 1" = 15'

HARMONY at MERIDIAN 50'S

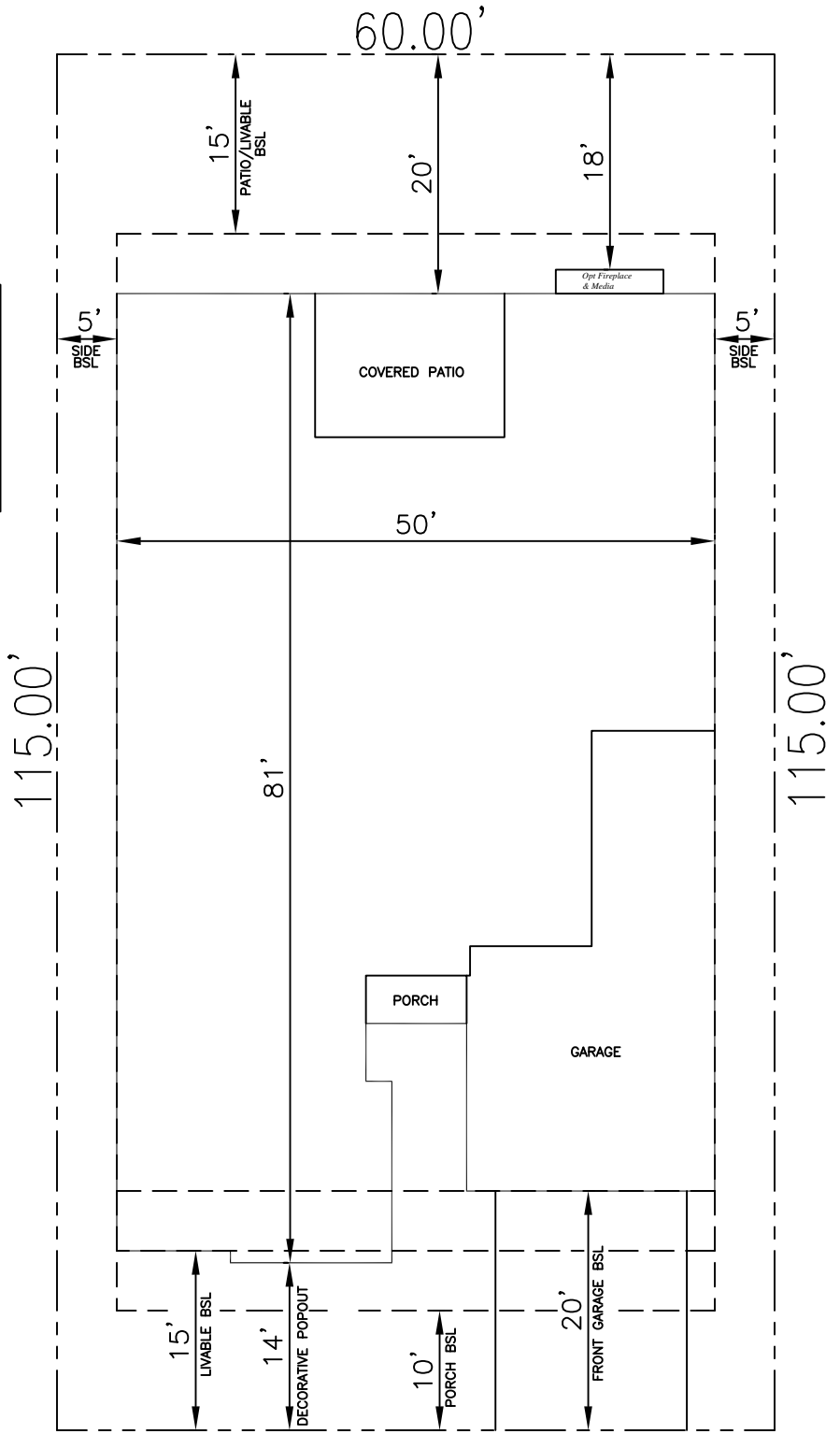
TYPICAL COVERAGE
 (6,900sf Lot)
 A: 54.2%
 B: 54.8%
 C: 54.0%



Plan 5 - Typical Plot
 1" = 15'

HARMONY at MERIDIAN 50'S

TYPICAL COVERAGE
 (6,900sf Lot)
 A: 54.8%
 B: 54.9%
 C: 54.8%



Plan 6 - Typical Plot
 1" = 15'

HARMONY at MERIDIAN 50'S

CHURCH FARM

Color Schemes

ROOF: Eagle Roof Tile
 STONE / BRICK: Boral Cultured Stone
 PAINT: Sherwin-Williams

A ELEVATIONS

#	ROOFING (S-Tile)	TRIM	STUCCO	SECONDARY STUCCO	DOORS
1	SMC 8401 Capistrano, San Miguel Blend	6133 Muslin	6121 Whole Wheat	6109 Hopsack	7622 Homburg Gray
2	3645 Capistrano, Sunrise Blend	7737 Meadow Trail	6120 Believable Buff	6116 Tatami Tan	7505 Manor House
3	SHC 8711 Capistrano, Puesta Del Sol	6120 Believable Buff	6123 Baguette	6129 Restrained Gold	2838 Polished Mahogany
4	SCC 8807 Capistrano, Monterey Blend	7696 Toasted Pine Nut	7693 Stonebriar	6117 Smokey Topaz	6054 Canyon Clay
5	3645 Capistrano, Sunrise Blend	6153 Protégé Bronze	6108 Latte	6120 Believable Buff	7729 Edamame

B ELEVATIONS

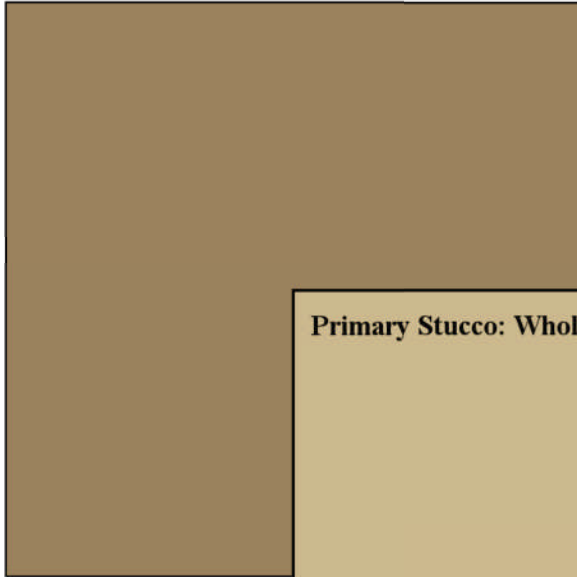
#	ROOFING (Flat Tile)	TRIM	STUCCO	BRICK	DOORS
3	4680 Bel Air, Los Padres Blend	6120 Believable Buff	6123 Baguette	Boral Handmade Rustic Manor	2838 Polished Mahogany
4	SCP 8804 Ponderosa, Hershey Blend	7696 Toasted Pine Nut	7693 Stonebriar	Boral Phenix City Waterford Blend	6054 Canyon Clay
5	5670 Ponderosa, Arroyo Tan	6153 Protégé Bronze	6108 Latte	Boral Handmade Moroccan Sand	7729 Edamame
6	SHE 8715 Estate, Roanoke Blend	7731 San Antonio Sage	7684 Concord Buff	Boral Handmade Rustic Manor	6069 French Roast
7	SCP 8804 Ponderosa, Hershey Blend	6165 Connected Gray	6134 Netsuke	Boral Handmade Moroccan Sand	6055 Fiery Brown
8	SHP 8707 Ponderosa, Sierra Blend	6672 Morning Sun	7739 Herbal Wash	Boral Phenix City Waterford Blend	6167 Garden Gate

C ELEVATIONS

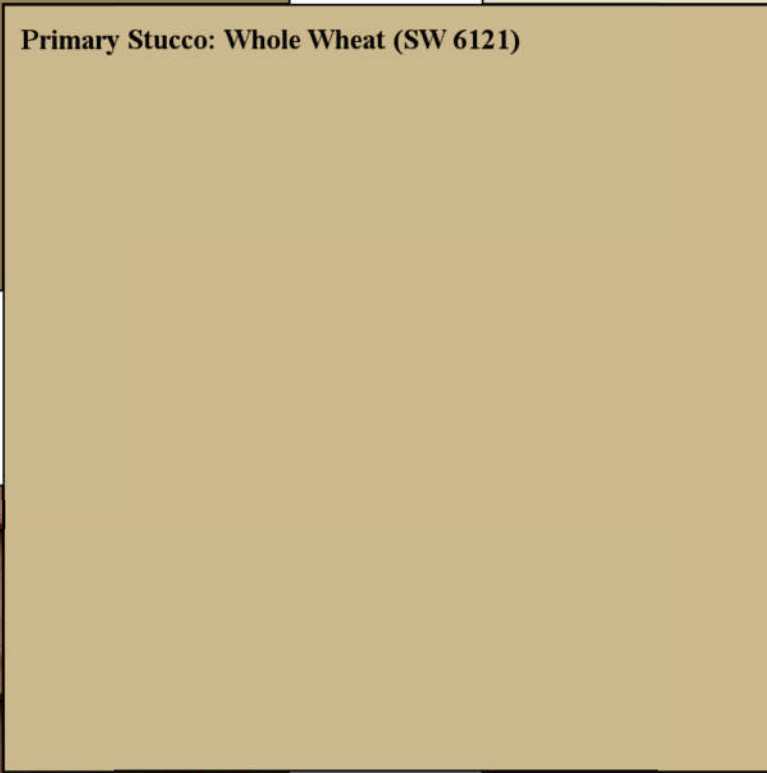
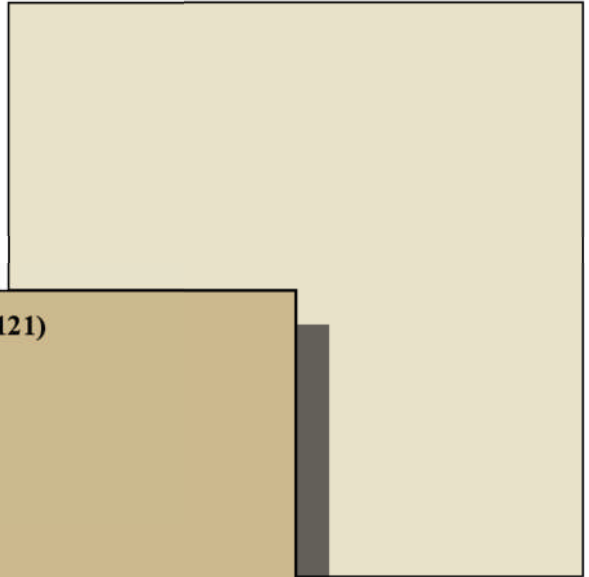
#	ROOFING (Flat Tile)	TRIM	STUCCO	STONE	ACCENT
2	SHP 8707 Ponderosa, Sierra Blend	7737 Meadow Trail	6120 Believable Buff	CSV 2042 Dres'd Fieldstone, Chardonnay	7505 Manor House
6	SHE 8715 Estate, Roanoke Blend	7731 San Antonio Sage	7684 Concord Buff	CSV 2045 Limestone, Chardonnay	6069 French Roast
7	SHE 8715 Estate, Roanoke Blend	6165 Connected Gray	6134 Netsuke	CSV 2007 Drystack LedgeStone, Caramel	6055 Fiery Brown
8	5504 Ponderosa, New Cedar	6672 Morning Sun	7739 Herbal Wash	CSV 2027 Southern LedgeStone, Walnut	6167 Garden Gate
9	SCP 8804 Ponderosa, Hershey Blend	6115 Totally Tan	7565 Oyster Bar	CSV 2010 Drystack LedgeStone, Suede	7076 Cyberspace
10	SCP 8706 Ponderosa, Cascade Blend	7565 Oyster Bar	6115 Totally Tan	CSV 2066 Cobblefield, Desert Blend	7076 Cyberspace

Color Scheme 1 - A Elevations

Secondary Stucco: Hopsack (SW 6109)



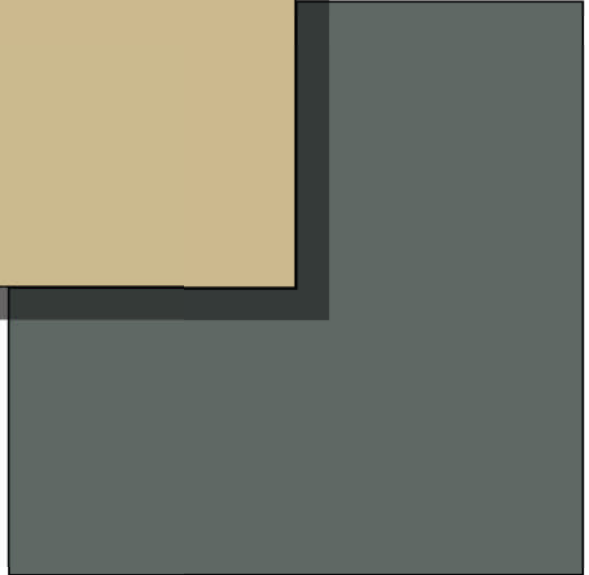
Trim: Muslin (SW 6133)



Primary Stucco: Whole Wheat (SW 6121)



Roof: Capistrano, San Miguel Blend (SMC 8401)



Doors: Homburg Gray (SW 7622)

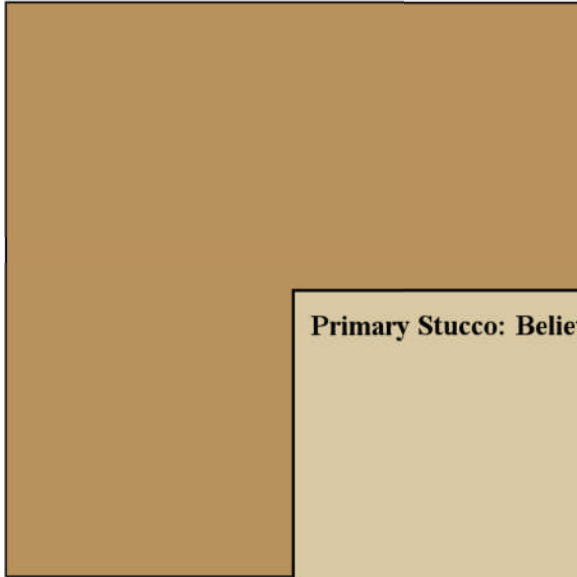
Church Farm
William Lyon Homes



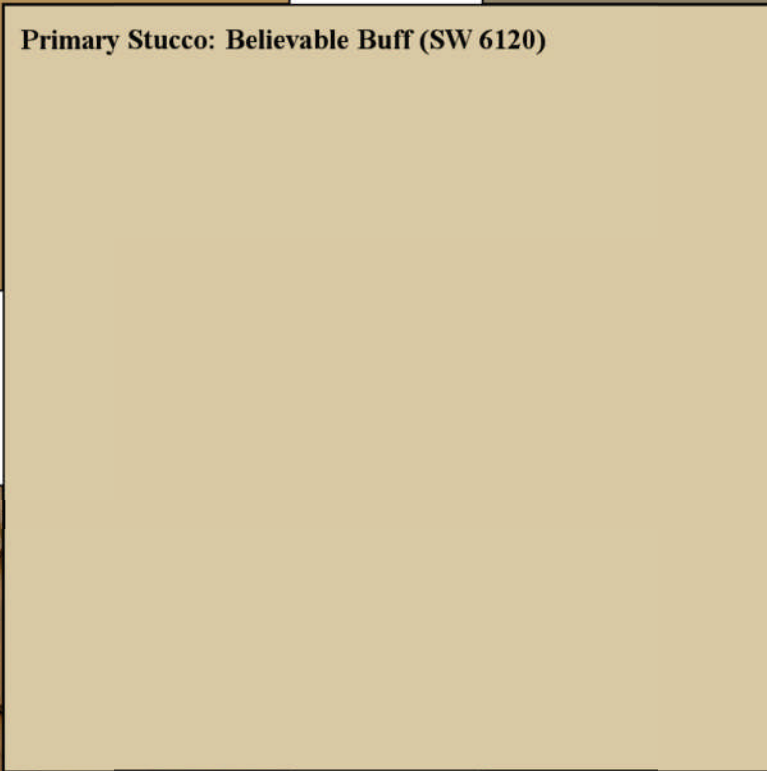
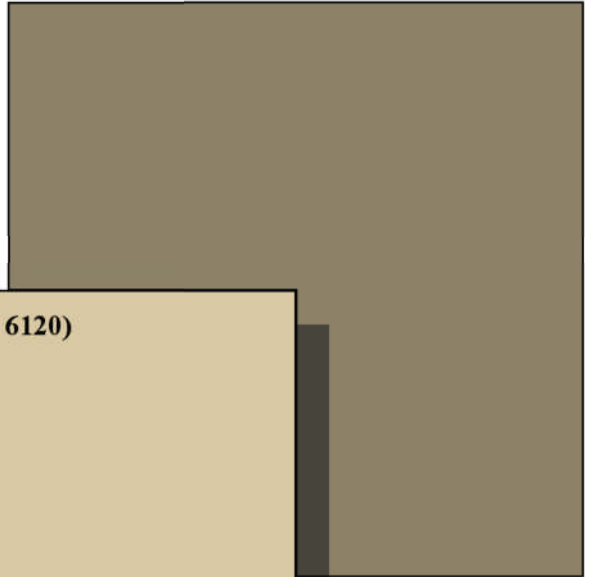
edingerArchitects

Color Scheme 2 - A Elevations

Secondary Stucco: Tatami Tan (SW 6116)



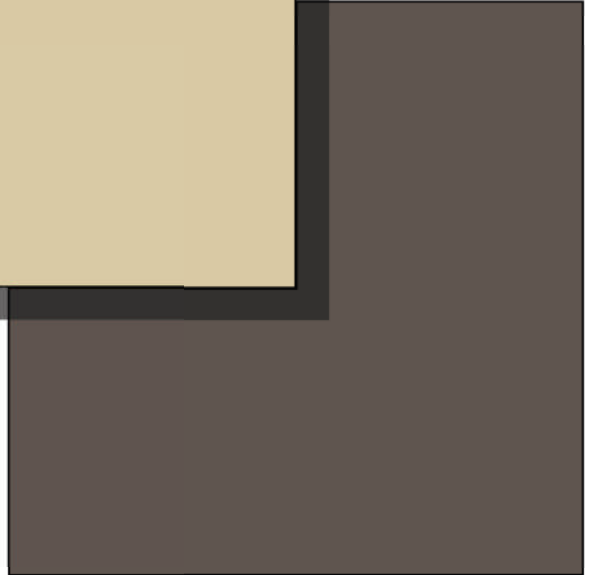
Trim: Meadow Trail (SW 7737)



Primary Stucco: Believable Buff (SW 6120)



Roof: Capistrano, Sunrise Blend (3645)



Doors: Manor House (SW 7505)

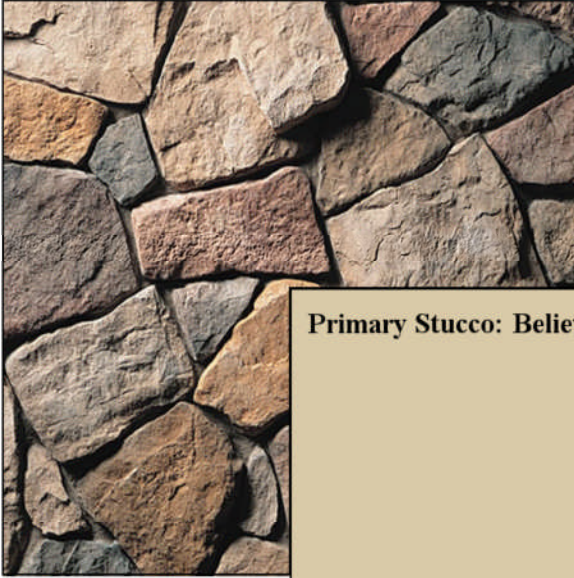
Church Farm
William Lyon Homes



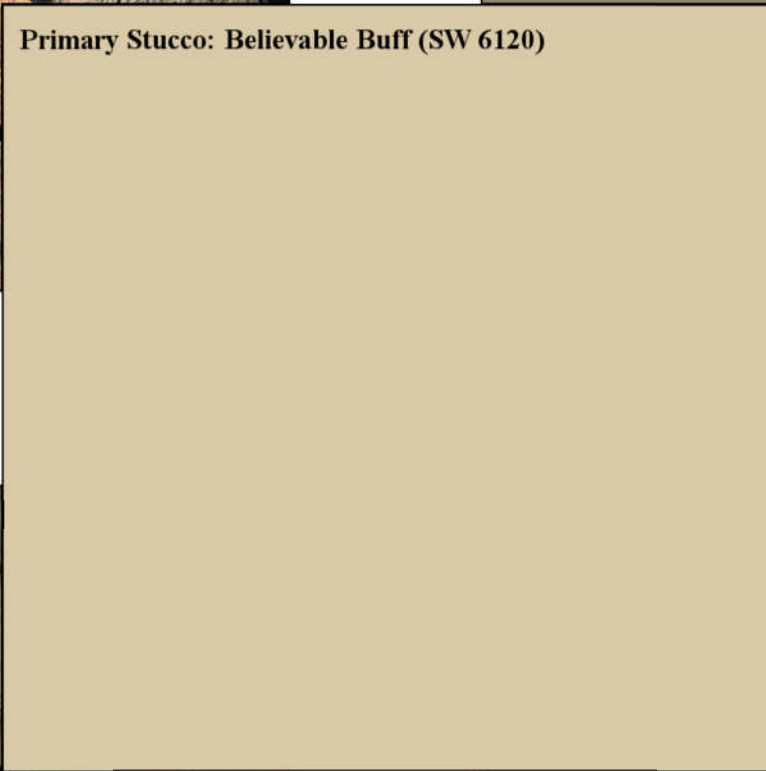
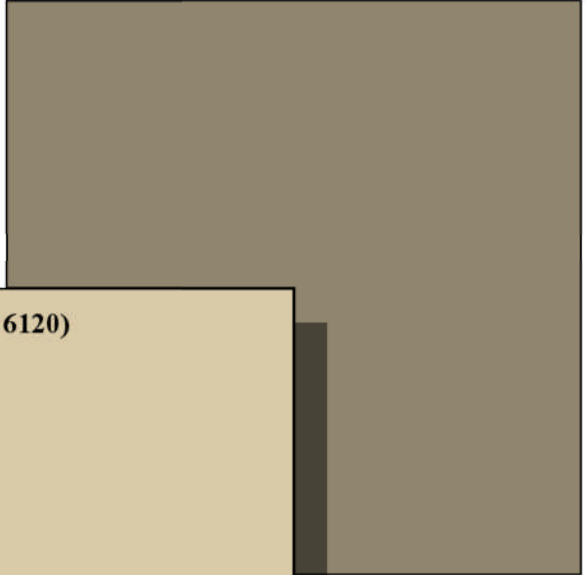
edingerArchitects

Color Scheme 2 - C Elevations

Stone: Dressed Fieldstone, Chardonnay (CSV 2042)



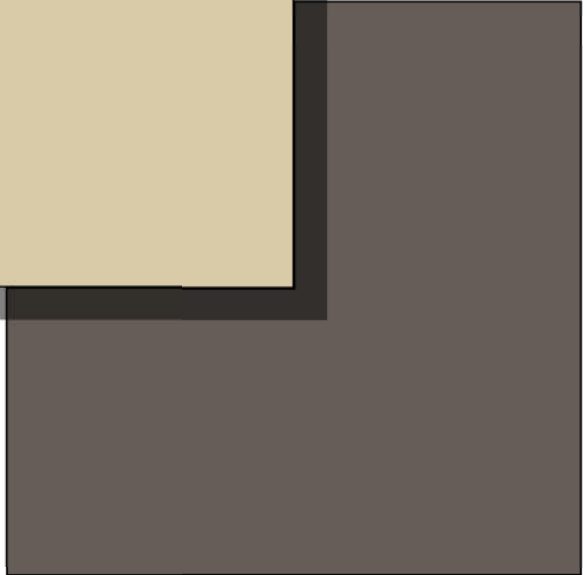
Trim: Meadow Trail (SW 7737)



Primary Stucco: Believable Buff (SW 6120)



Roof: Ponderosa, Sierra Blend (SHP 8707)



Doors: Manor House (SW 7505)

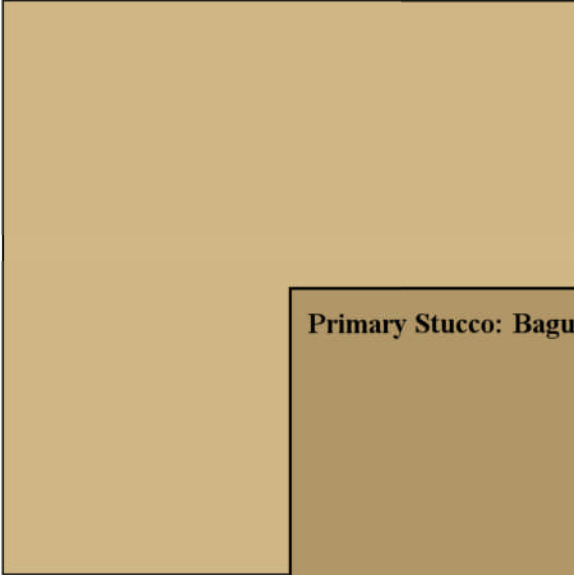
Church Farm
William Lyon Homes



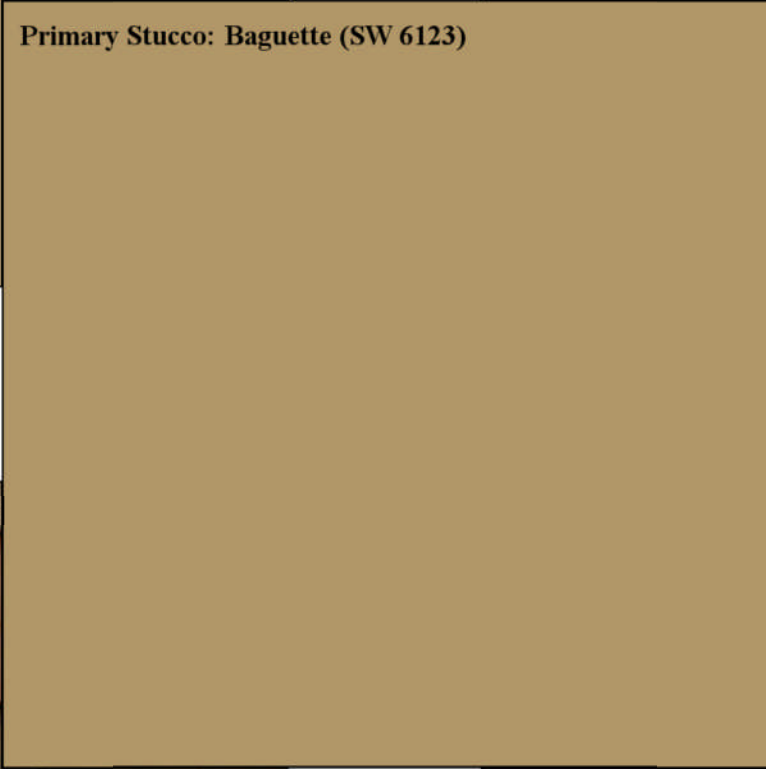
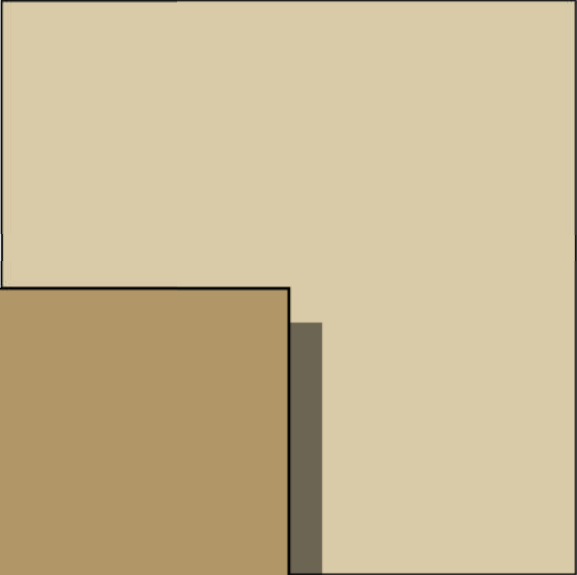
edingerArchitects

Color Scheme 3 - A Elevations

Secondary Stucco: Restrained Gold (SW 6129)



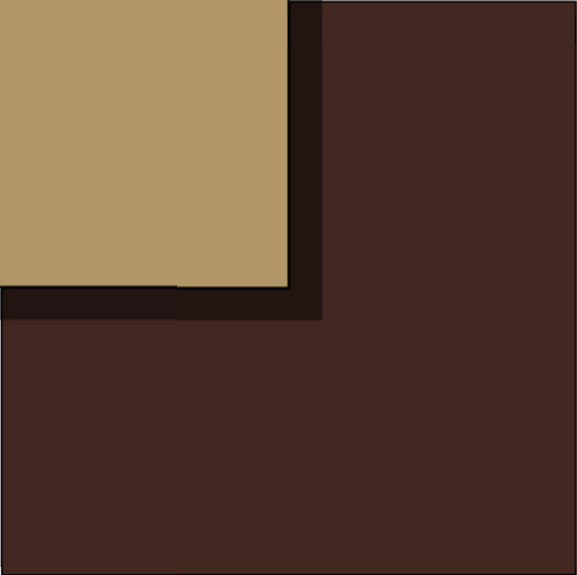
Trim: Believable Buff (SW 6120)



Primary Stucco: Baguette (SW 6123)



Roof: Capistrano, Puesta Del Sol Blend (SHC 8711)



Doors: Polished Mahogany (SW 2838)

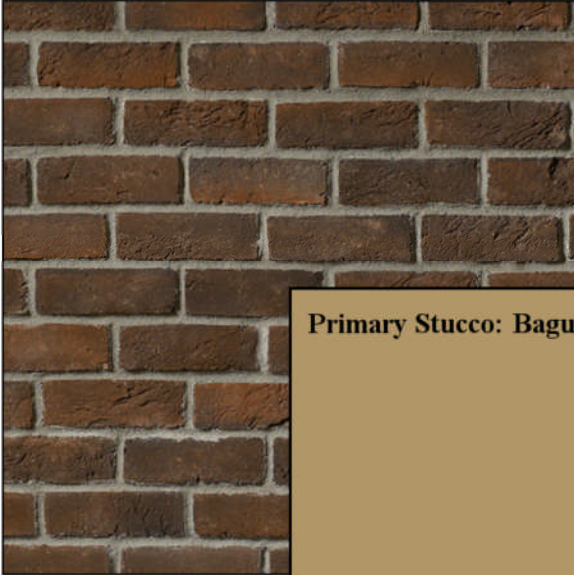
Church Farm
William Lyon Homes



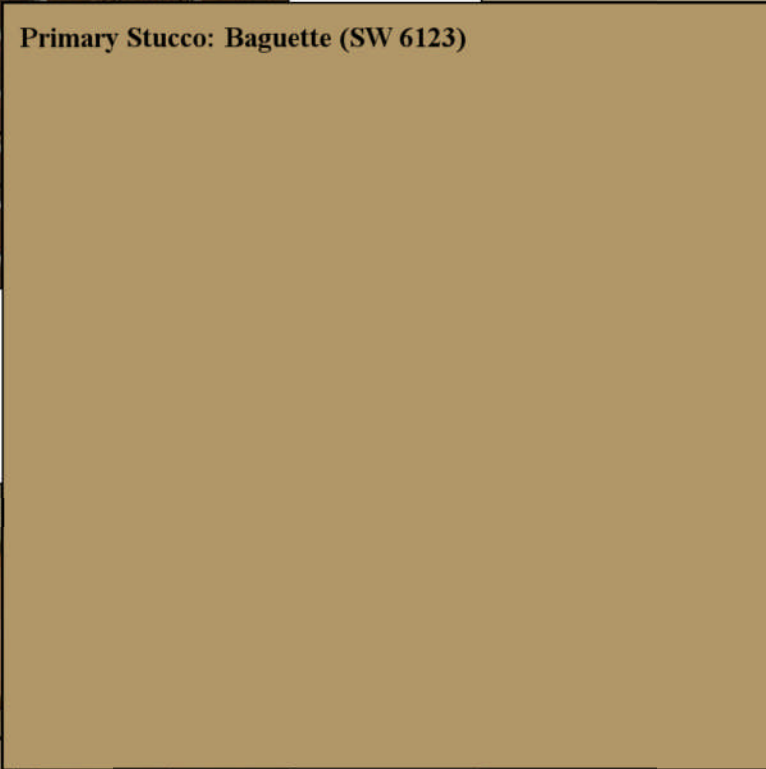
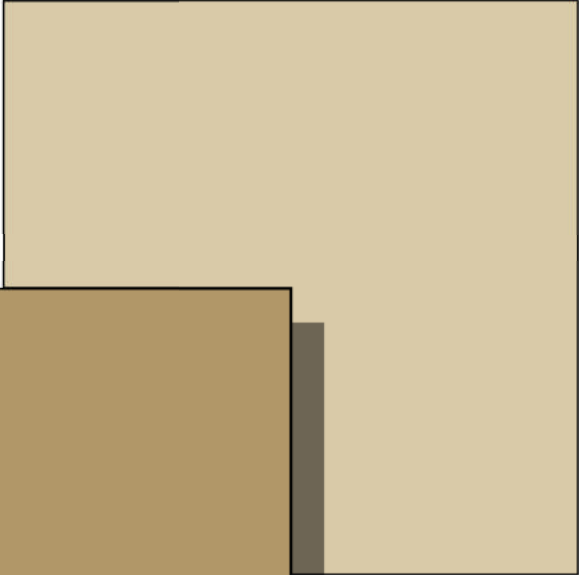
edingerArchitects

Color Scheme 3 - B Elevations

Brick: Boral Handmade, Rustic Manor



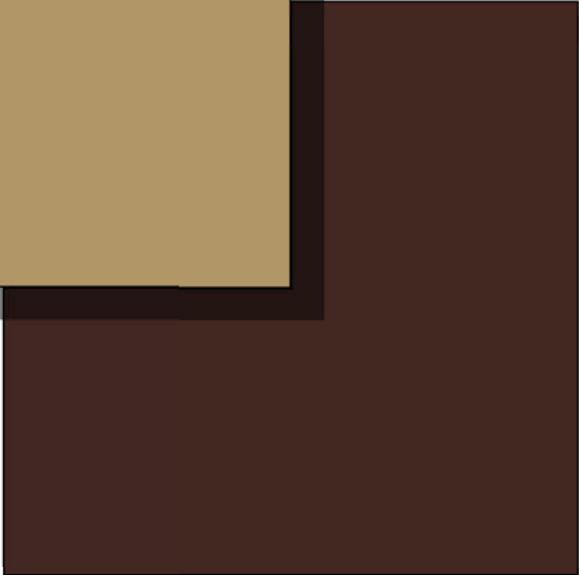
Trim: Believable Buff (SW 6120)



Primary Stucco: Baguette (SW 6123)



Roof: Bel Air, Los Padres Blend (4680)



Doors: Polished Mahogany (SW 2838)

Church Farm
William Lyon Homes

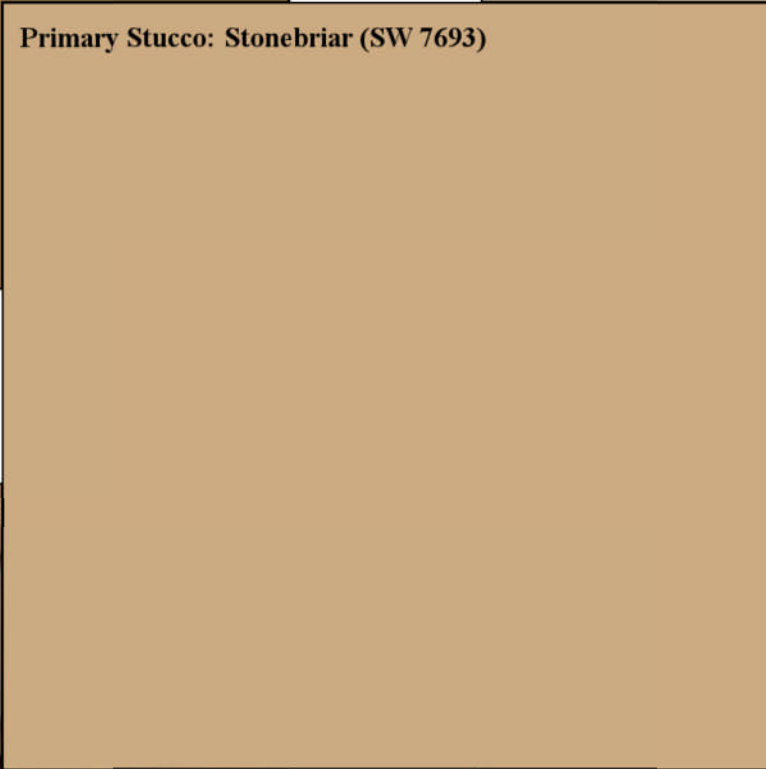
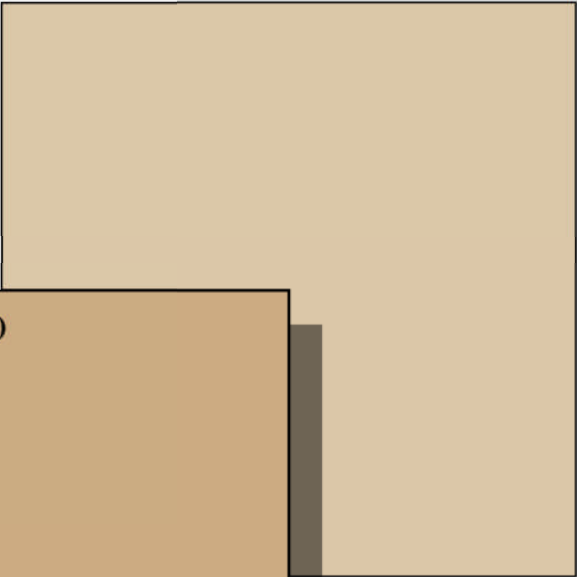
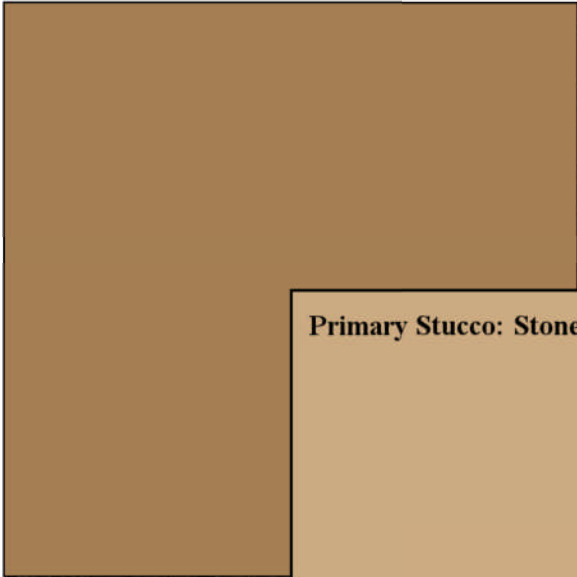


edingerArchitects

Color Scheme 4 - A Elevations

Secondary Stucco: Smokey Topaz (SW 6117)

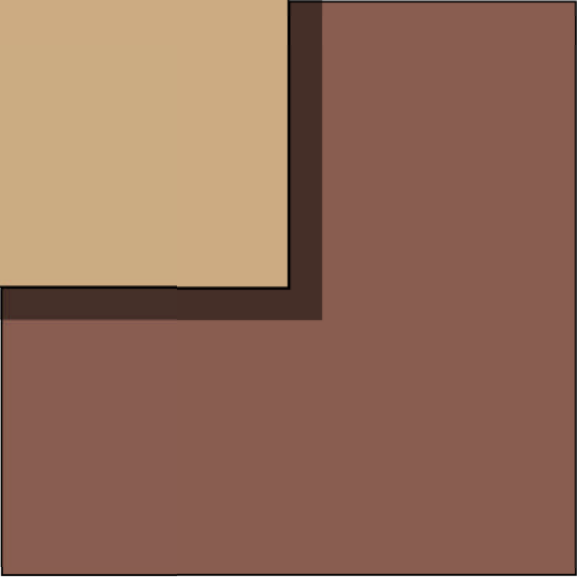
Trim: Toasted Pine Nut (SW 7696)



Primary Stucco: Stonebriar (SW 7693)



Roof: Capistrano, Monterey Blend (SCC 8807)



Doors: Canyon Clay (SW 6054)

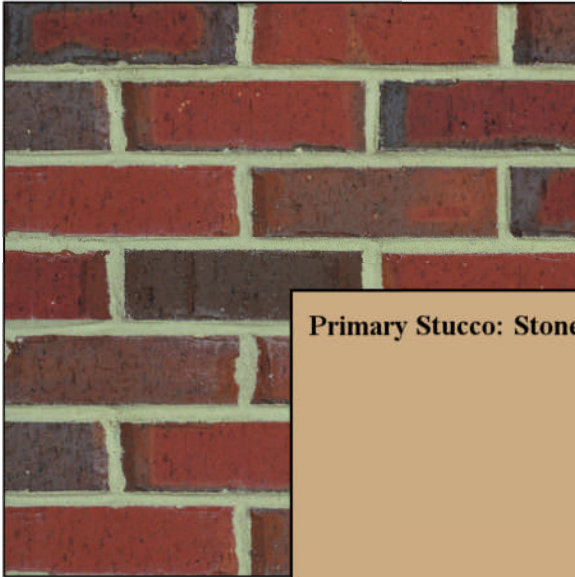
Church Farm
William Lyon Homes



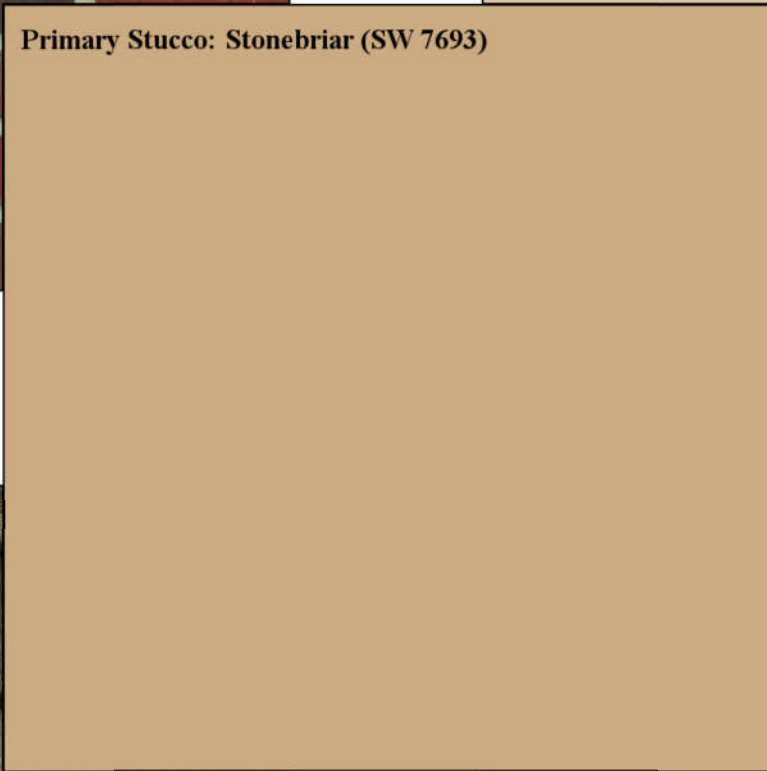
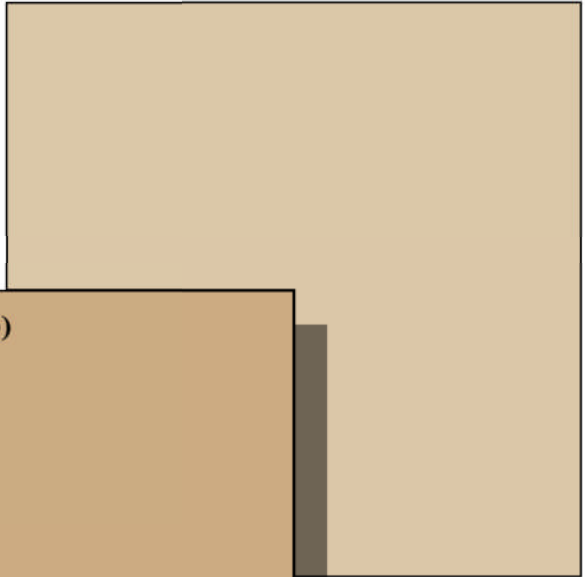
edingerArchitects

Color Scheme 4 - B Elevations

Brick: Boral Phenix City, Waterford Blend



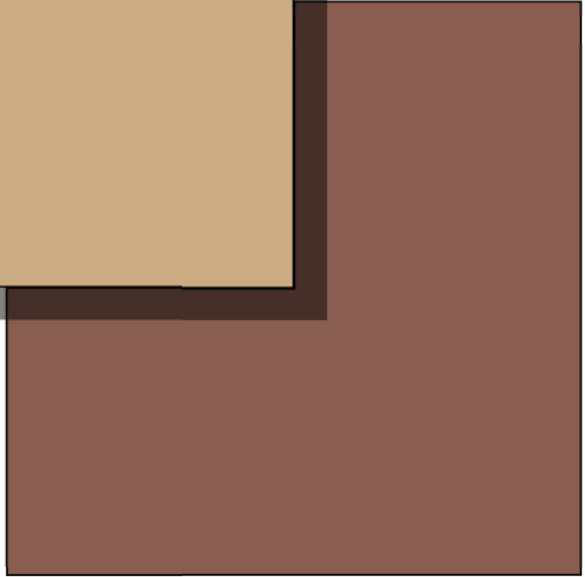
Trim: Toasted Pine Nut (SW 7696)



Primary Stucco: Stonebriar (SW 7693)



Roof: Ponderosa, Hershey Blend (SCP 8804)



Doors: Canyon Clay (SW 6054)

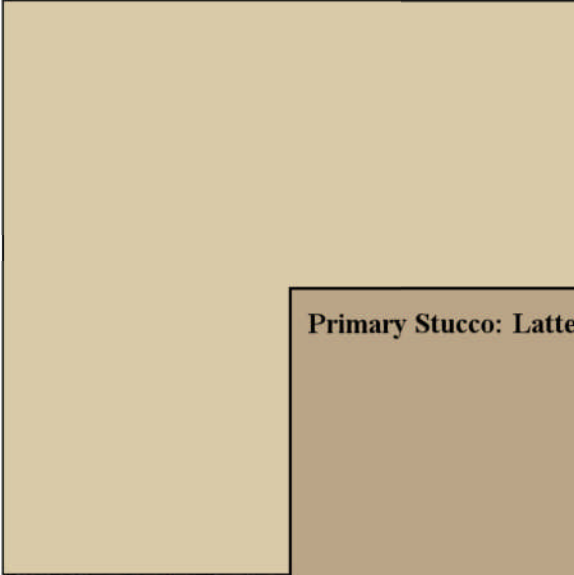
Church Farm
William Lyon Homes



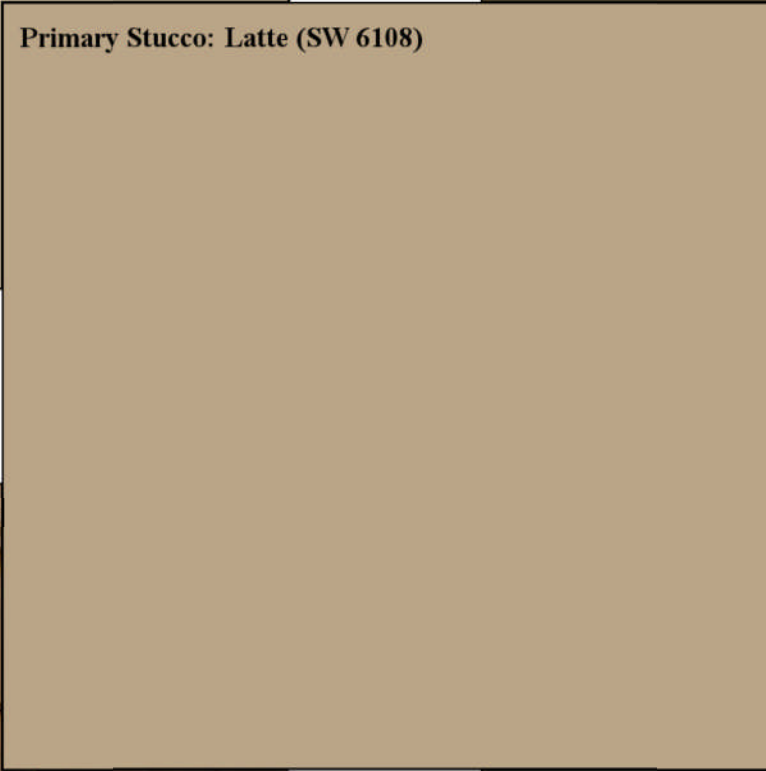
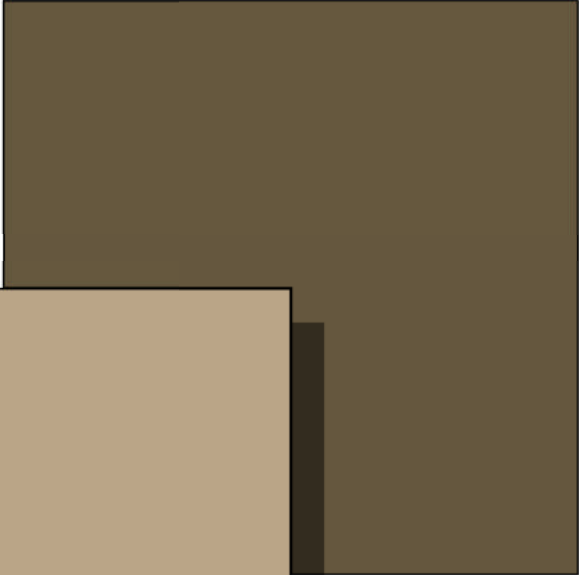
edingerArchitects

Color Scheme 5 - A Elevations

Secondary Stucco: Believable Buff (SW 6120)



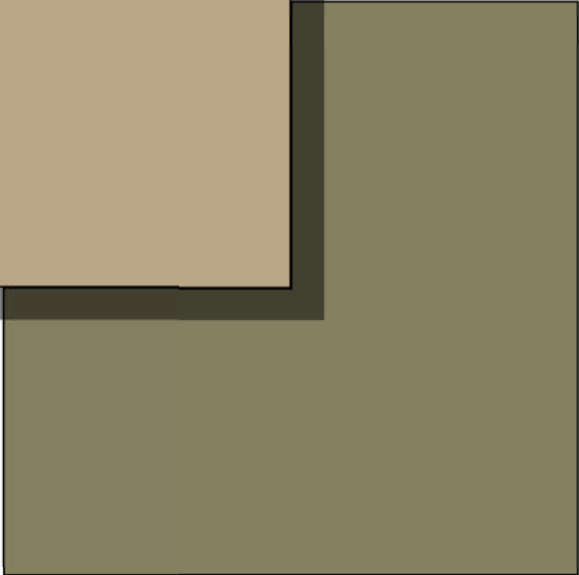
Trim: Protege Bronze (SW 6153)



Primary Stucco: Latte (SW 6108)



Roof: Capistrano, Sunrise Blend (3645)



Doors: Edamame (SW 7729)

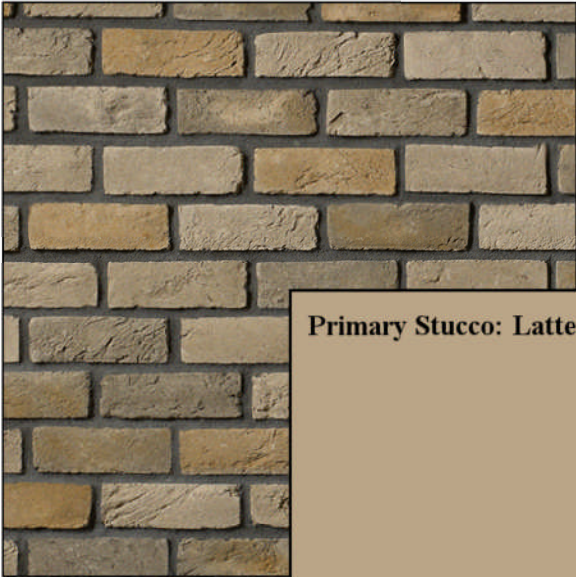
Church Farm
William Lyon Homes



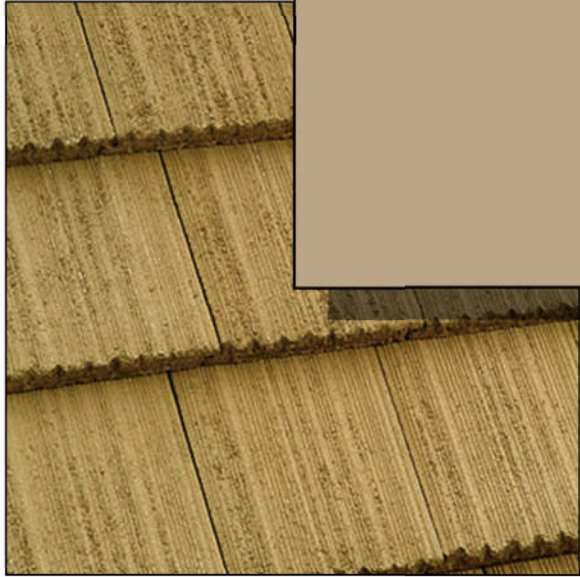
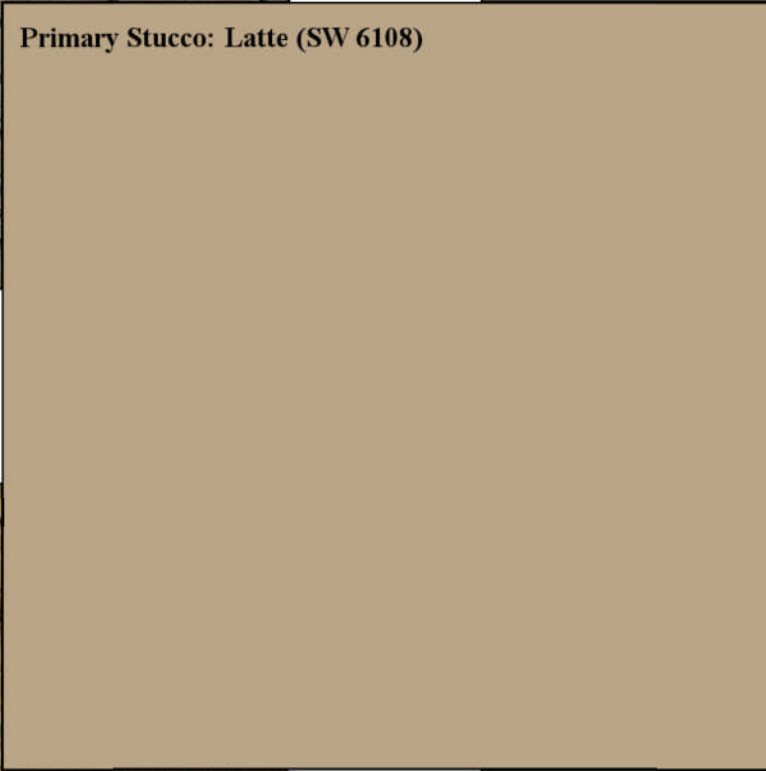
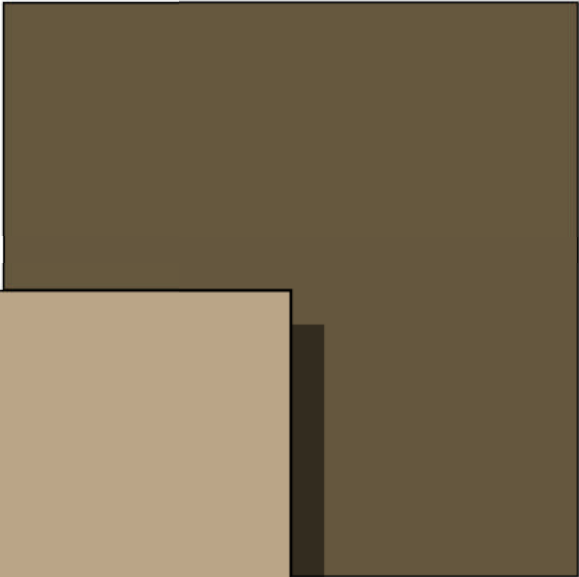
edingerArchitects

Color Scheme 5 - B Elevations

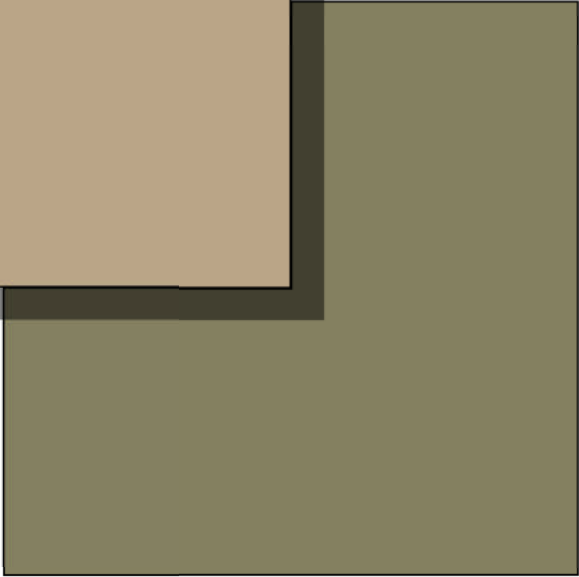
Brick: Boral Handmade, Moroccan Sand



Trim: Protege Bronze (SW 6153)



Roof: Ponderosa, Arroyo Tan (5670)



Doors: Edamame (SW 7729)

Church Farm
William Lyon Homes



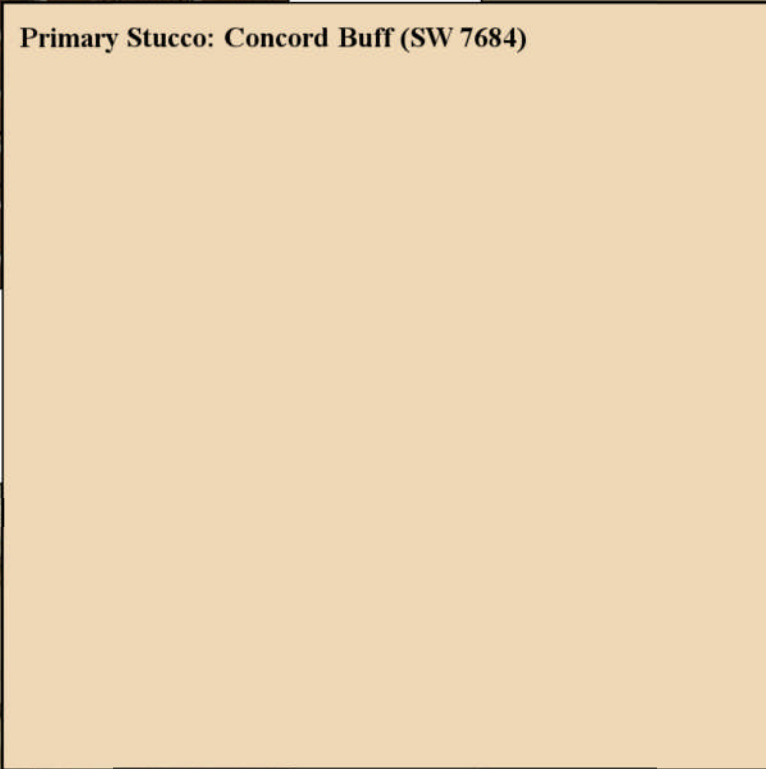
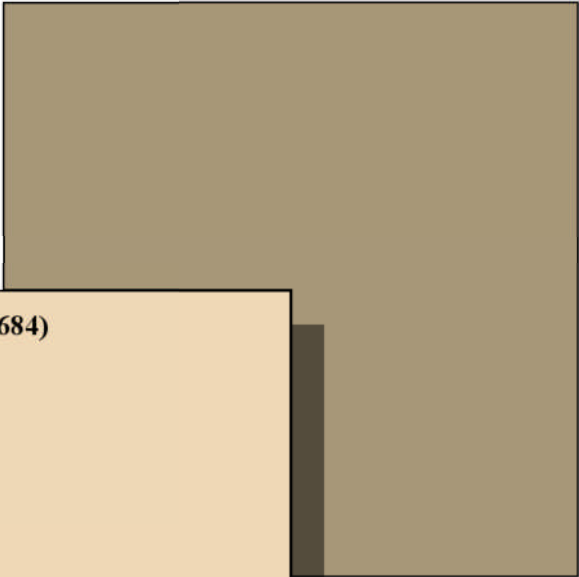
edingerArchitects

Color Scheme 6 - B Elevations

Brick: Boral Handmade, Rustic Manor



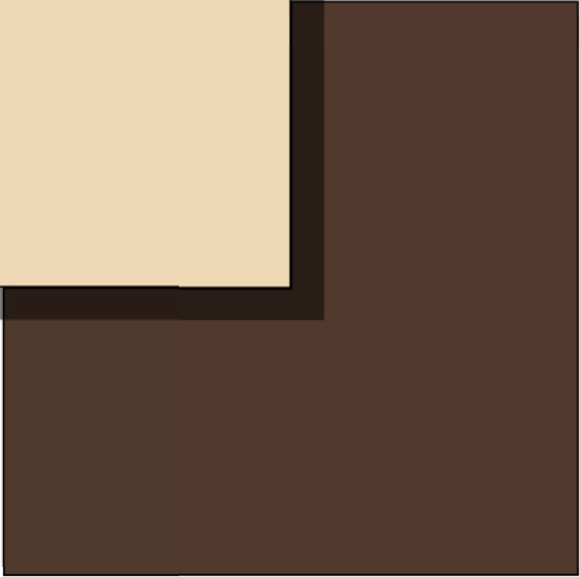
Trim: San Antonio Sage (SW 7731)



Primary Stucco: Concord Buff (SW 7684)



Roof: Estate, Roanoke Blend (SHE 8715)



Doors: French Roast (SW 6069)

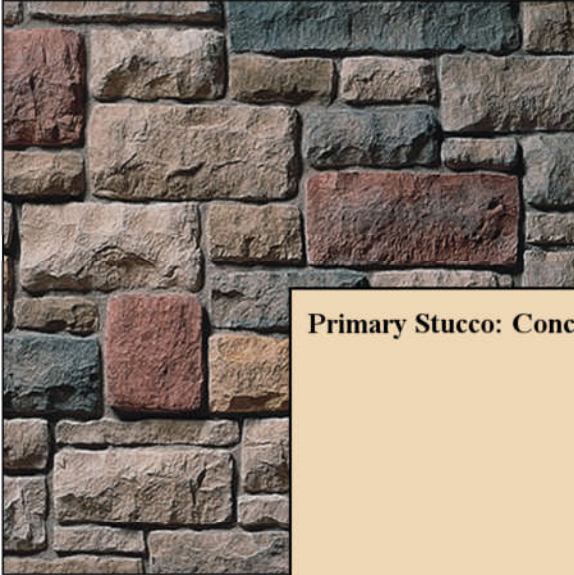
Church Farm
William Lyon Homes



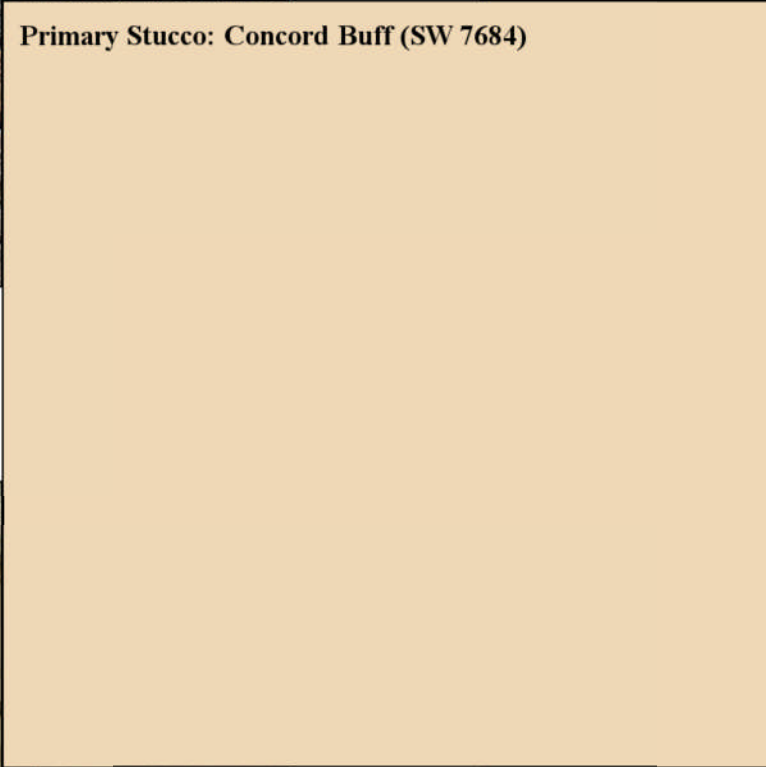
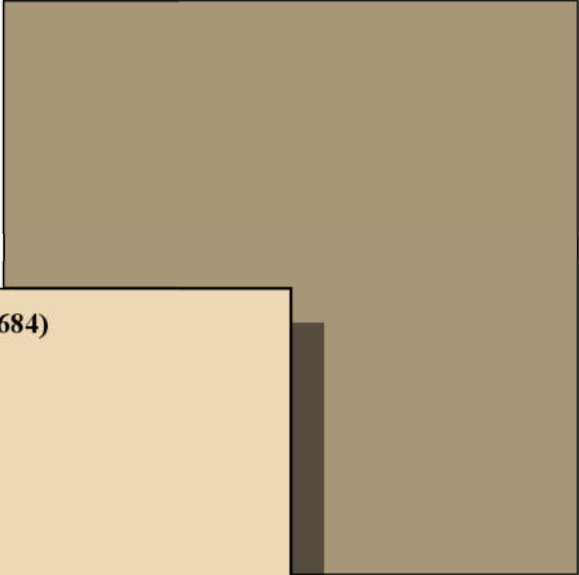
edingerArchitects

Color Scheme 6 - C Elevations

Brick: Limestone, Chardonnay (CSV 2045)



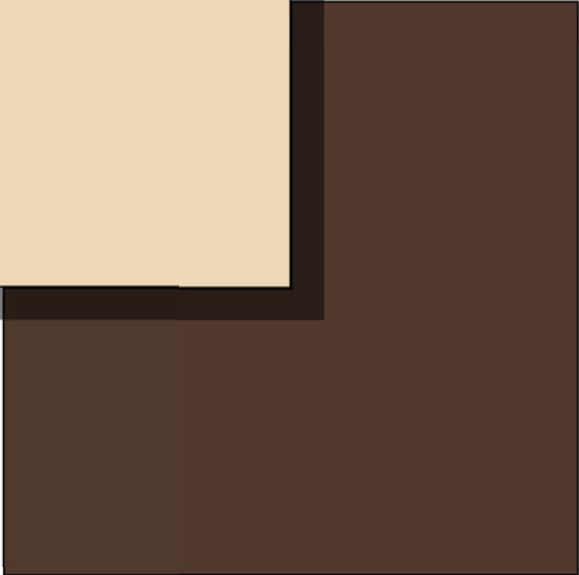
Trim: San Antonio Sage (SW 7731)



Primary Stucco: Concord Buff (SW 7684)



Roof: Estate, Roanoke Blend (SHE 8715)



Doors: French Roast (SW 6069)

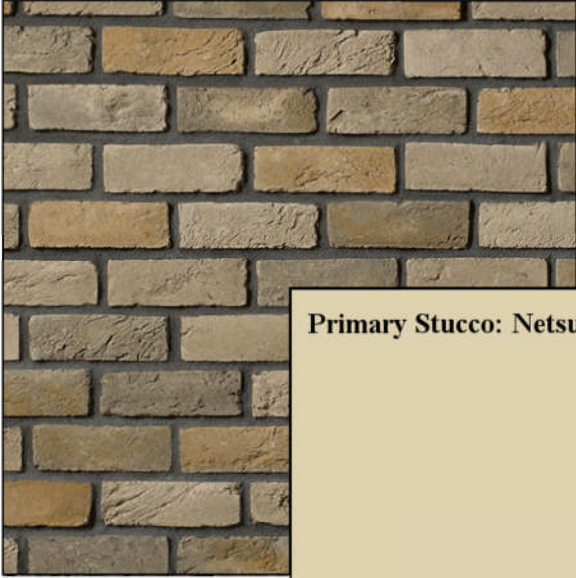
Church Farm
William Lyon Homes



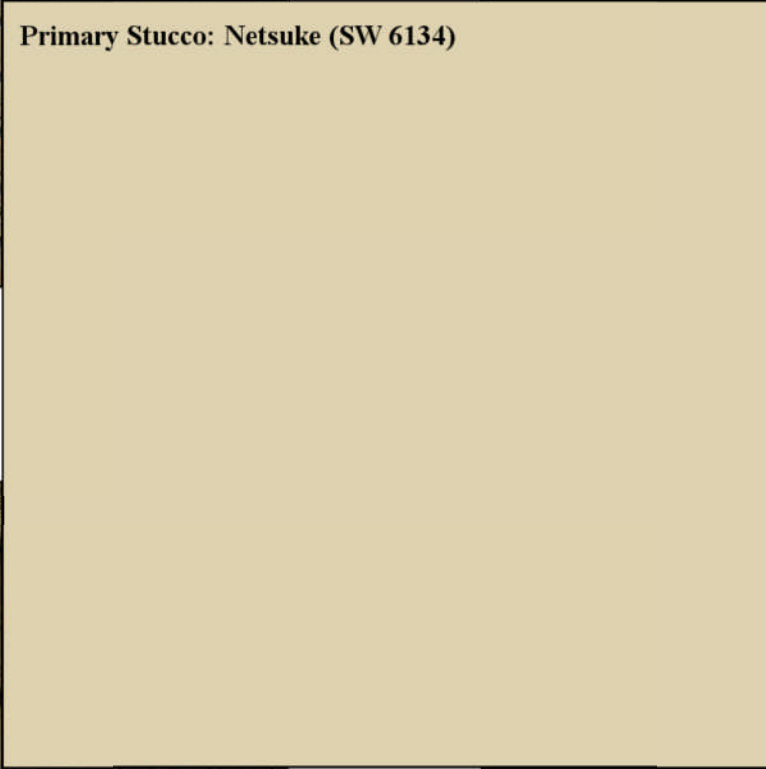
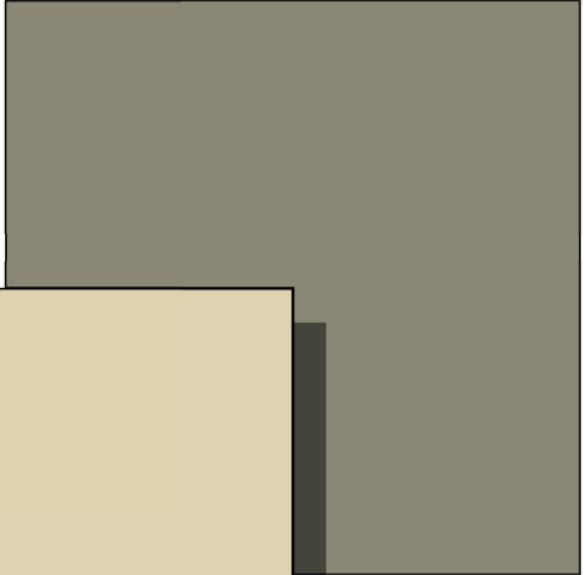
edingerArchitects

Color Scheme 7 - B Elevations

Brick: Boral Handmade, Moroccan Sand



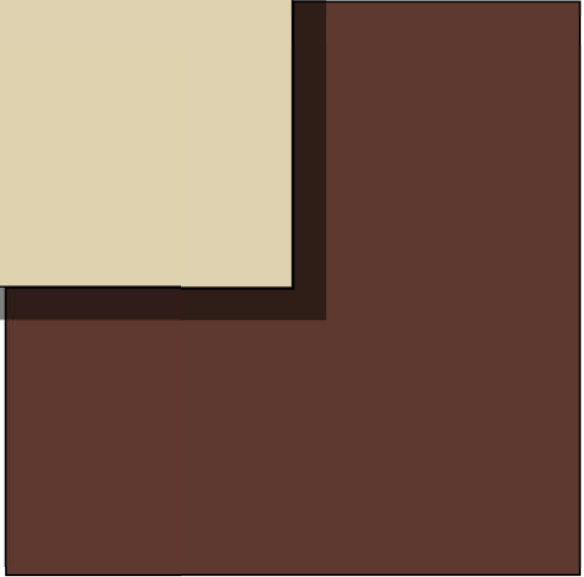
Trim: Connected Gray (SW 6165)



Primary Stucco: Netsuke (SW 6134)



Roof: Ponderosa, Hershey Blend (SCP 8804)



Doors: Fiery Brown (SW 6055)

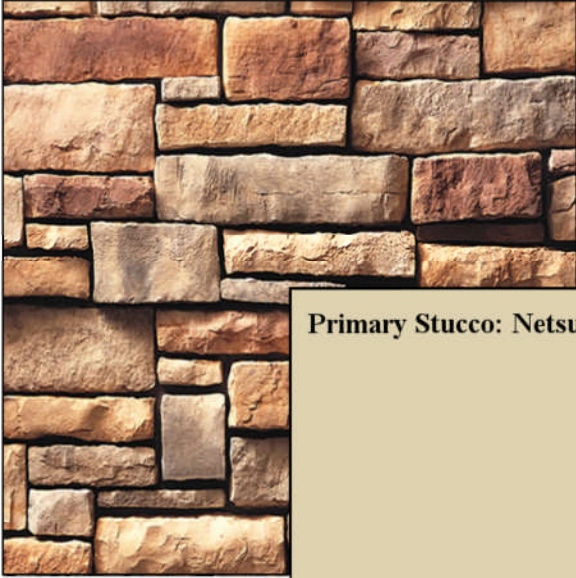
Church Farm
William Lyon Homes



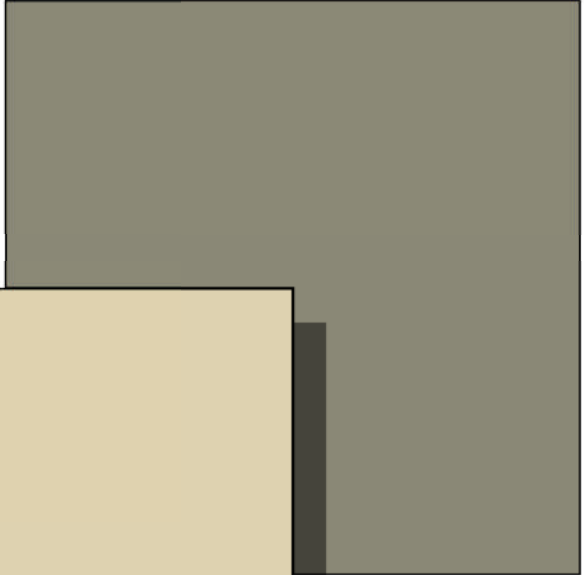
edingerArchitects

Color Scheme 7 - C Elevations

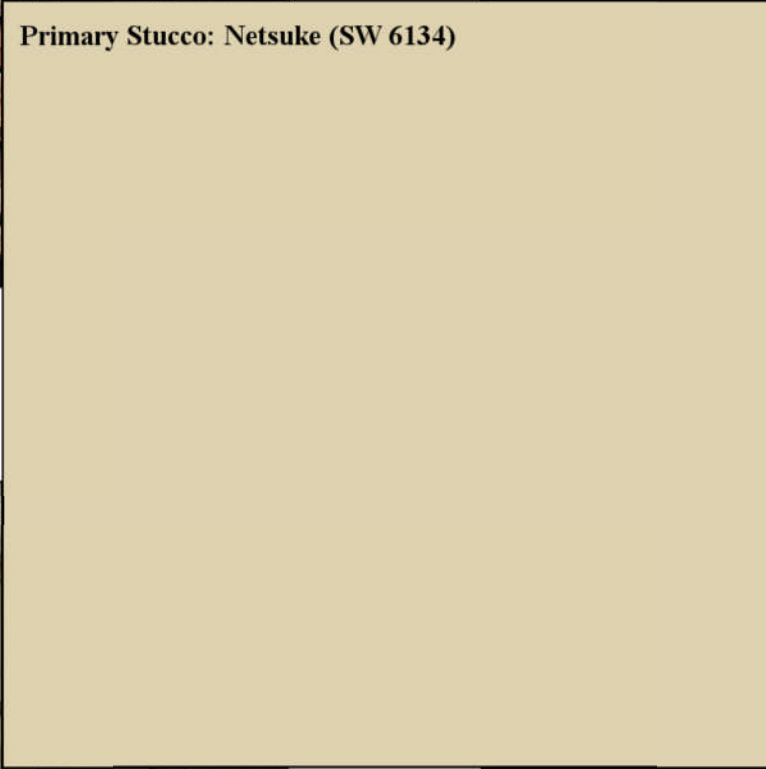
Stone: Drystack LedgeStone, Caramel (CSV 2007)



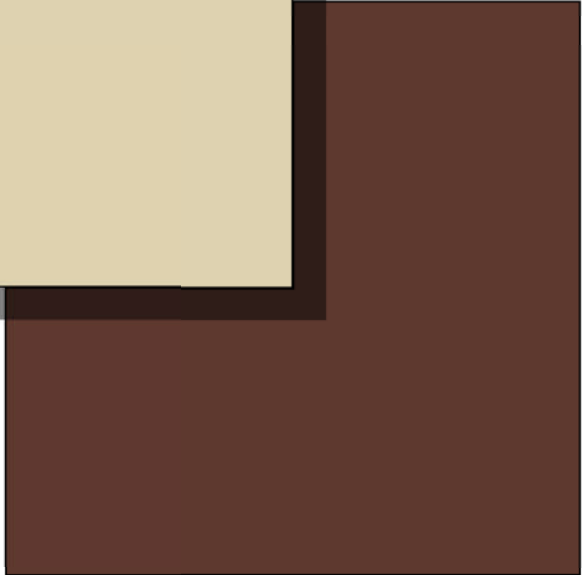
Trim: Connected Gray (SW 6165)



Primary Stucco: Netsuke (SW 6134)



Roof: Estate, Roanoke Blend (SHE 8715)



Doors: Fiery Brown (SW 6055)

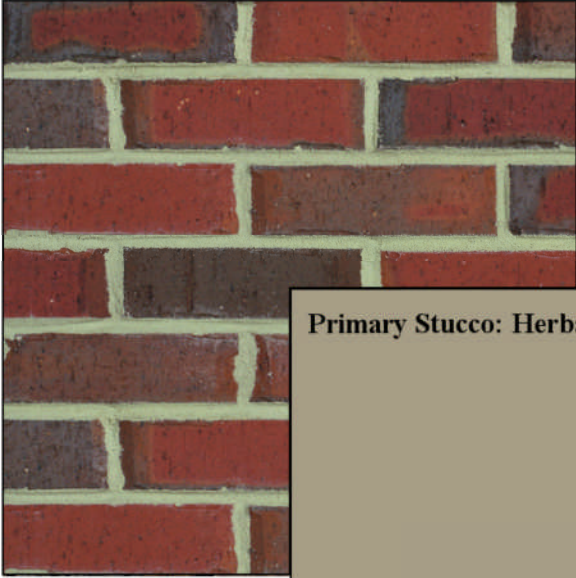
Church Farm
William Lyon Homes



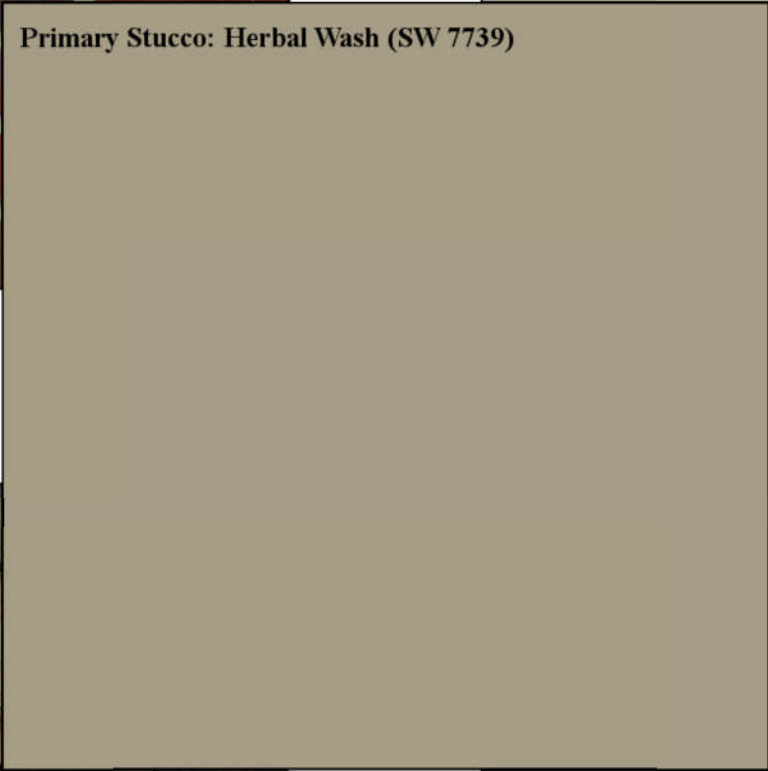
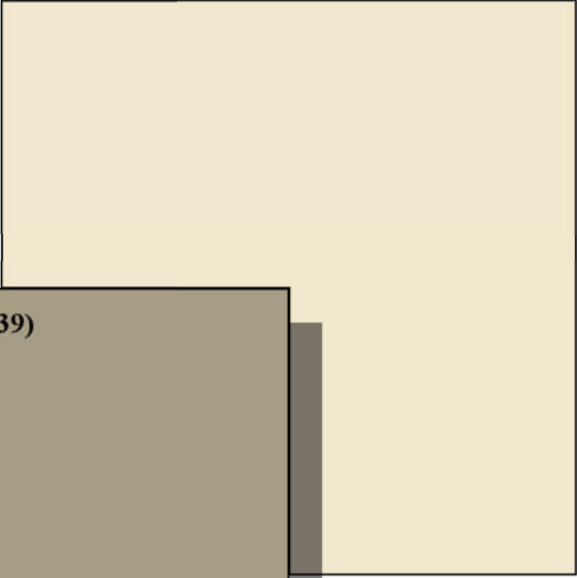
edingerArchitects

Color Scheme 8 - B Elevations

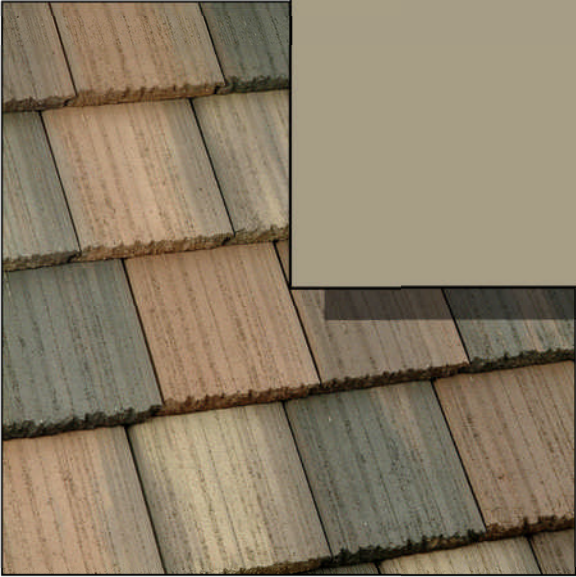
Brick: Boral Phenix City, Waterford Blend



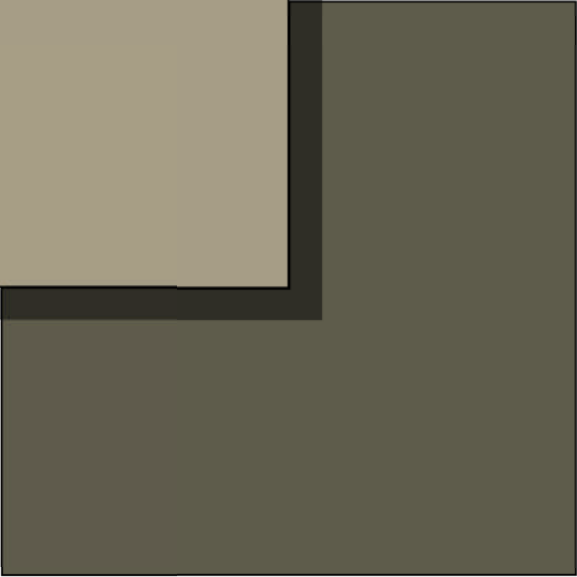
Trim: Morning Sun (SW 6672)



Primary Stucco: Herbal Wash (SW 7739)



Roof: Ponderosa, Sierra Blend (SHP 8707)



Doors: Garden Gate (SW 6167)

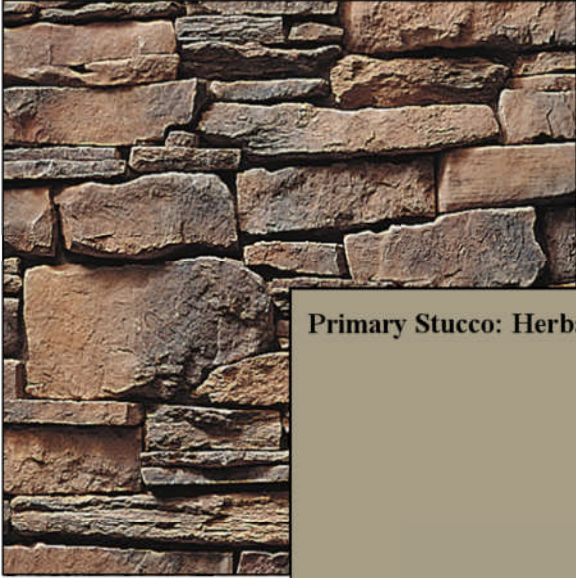
Church Farm
William Lyon Homes



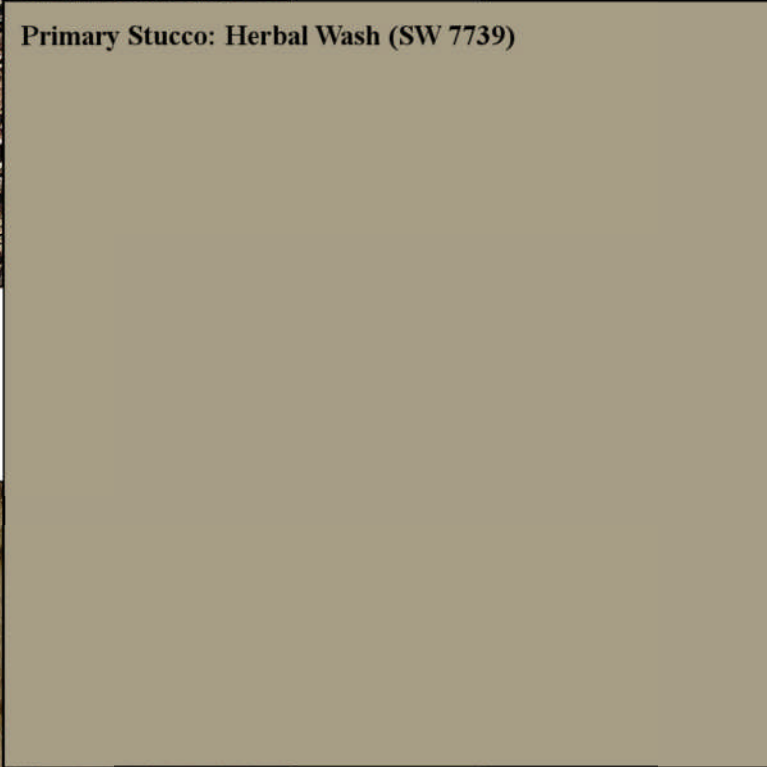
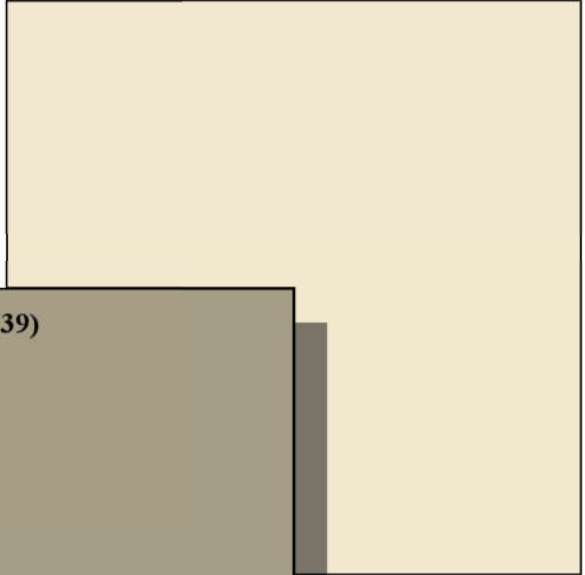
edingerArchitects

Color Scheme 8 - C Elevations

Stone: Southern Ledgestone, Walnut (CSV 2027)



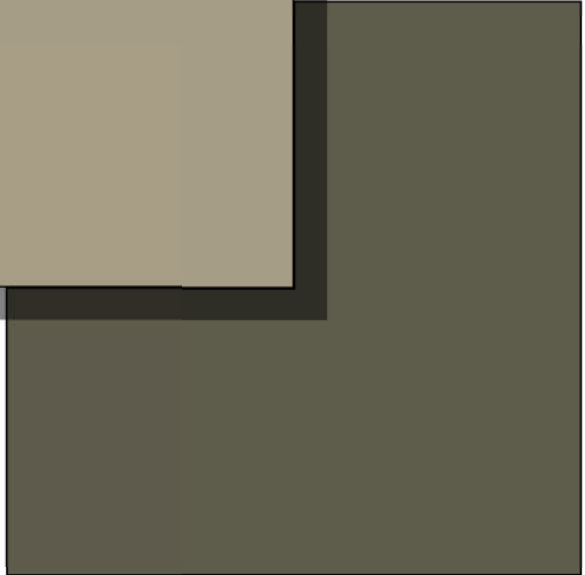
Trim: Morning Sun (SW 6672)



Primary Stucco: Herbal Wash (SW 7739)



Roof: Ponderosa, New Cedar (5504)



Doors: Garden Gate (SW 6167)

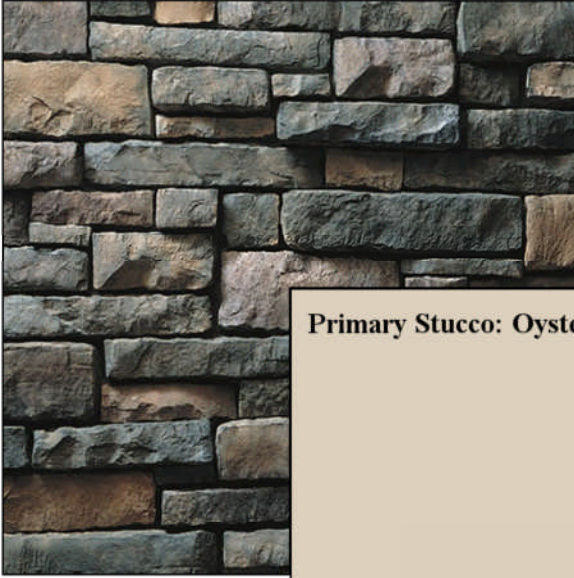
Church Farm
William Lyon Homes



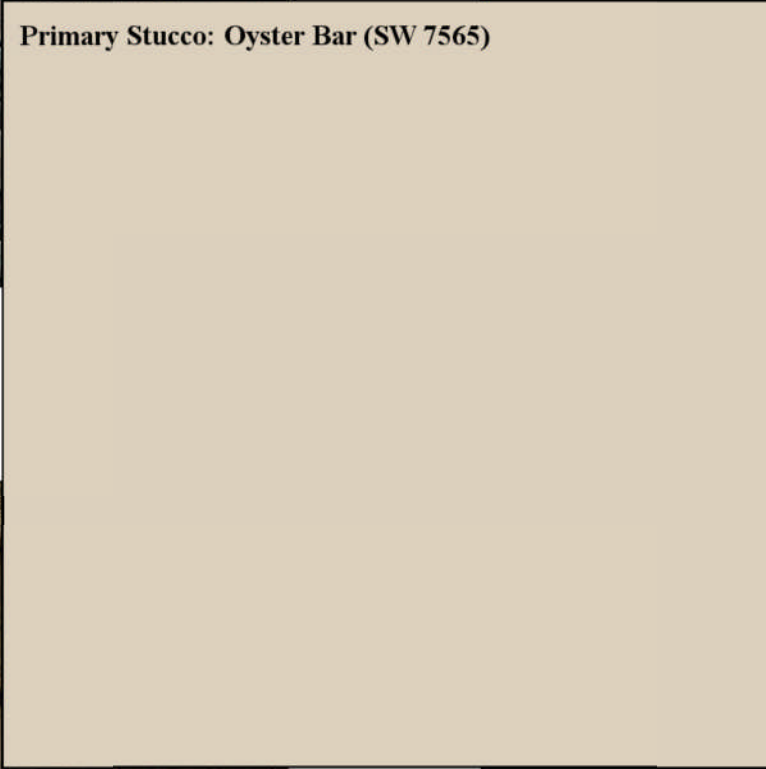
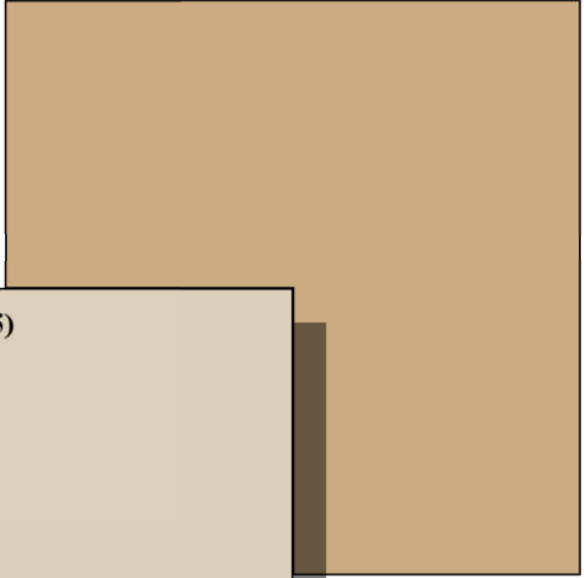
edingerArchitects

Color Scheme 9 - C Elevations

Stone: Drystack Ledgestone, Suede (CSV 2010)



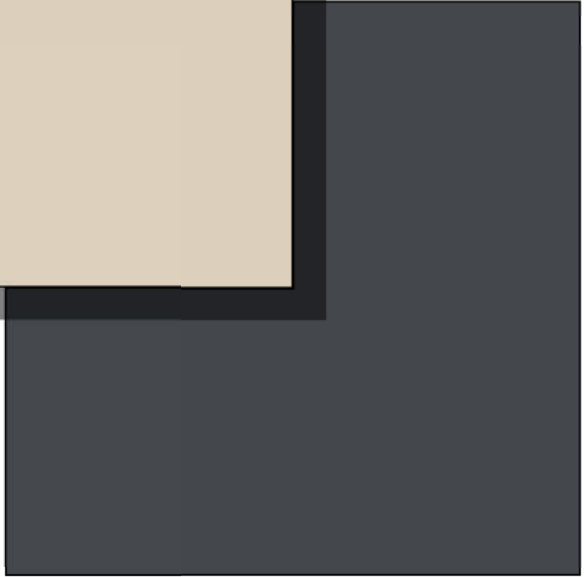
Trim: Totally Tan (SW 6115)



Primary Stucco: Oyster Bar (SW 7565)



Roof: Ponderosa, Hershey Blend (SCP 8804)



Doors: Cyberspace (SW 7076)

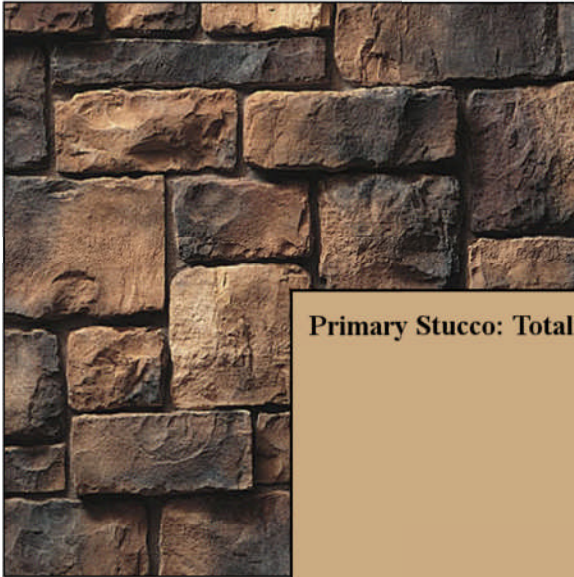
Church Farm
William Lyon Homes



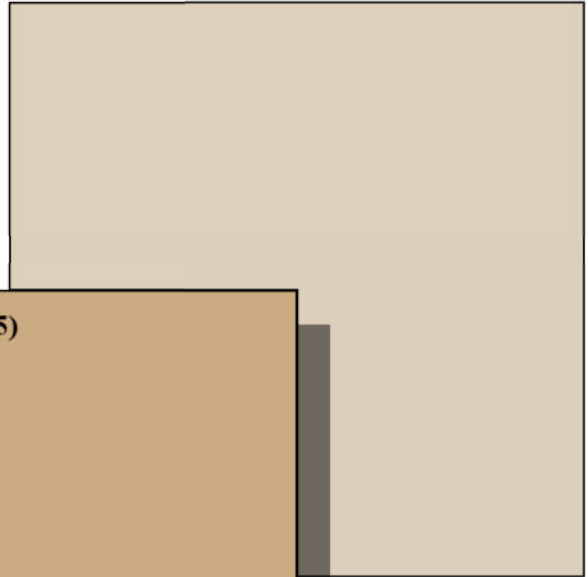
edingerArchitects

Color Scheme 10 - C Elevations

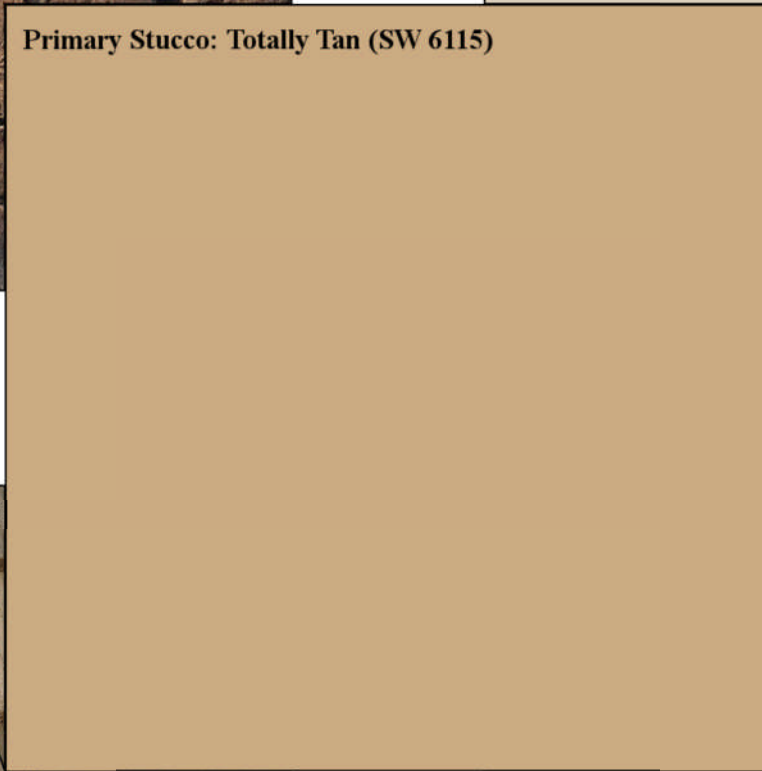
Stone: Cobblefield, Desert Blend (CSV 2066)



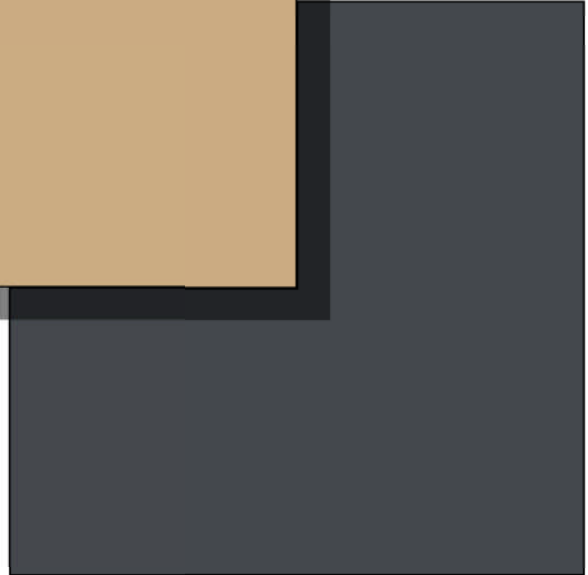
Trim: Oyster Bar (SW 7565)



Primary Stucco: Totally Tan (SW 6115)



Roof: Ponderosa, Cascade Blend (SCP 8706)



Doors: Cyberspace (SW 7076)

Church Farm
William Lyon Homes



edingerArchitects