

TOWN OF
QUEEN CREEK
ARIZONA

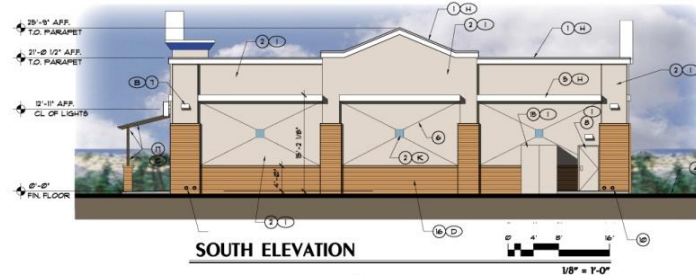
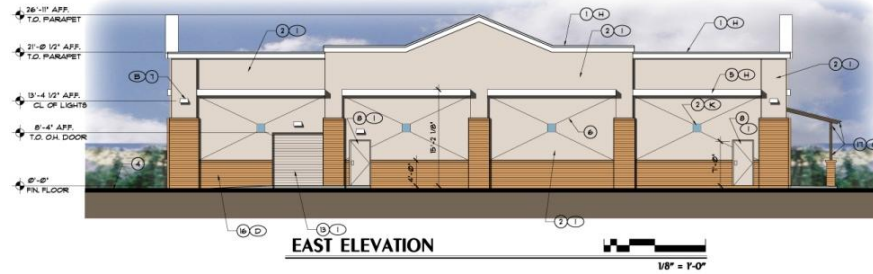
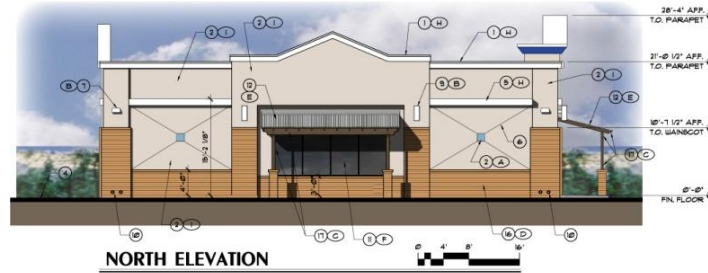
Aaron's
at
The Shoppes at Indigo Trails

SP13-044





Elevations



KEY NOTES

1. PAINTED SHEET METAL CAP FLASHING OVER STUCCO FASCIA
2. E.I.B.S. STUCCO INTEGRALLY COLORED
3. E.I.B.S. CORNICE INTEGRALLY COLORED
4. FINISH GRADE
5. WOOD FURRING PROJECTION BAND W/ E.I.B.S. STUCCO
6. CONTROL JOINT
7. WALL PACK LIGHT FIXTURE
8. HOLLOW METAL DOOR AND FRAME - PAINT TO MATCH WALL
9. DECORATIVE LIGHT FIXTURE
10. ROOF DRAIN AND OVERFLOW DRAIN
11. ALUMINUM 4 GLASS STOREFRONT SYSTEM
12. CORRUGATED STEEL AWNING
13. HEAVY DUTY COIL OVERHEAD DOOR, PAINTED
14. TENANT SIGN BACKLIT, PERMITTED SEPARATELY
15. ELECTRICAL SERVICE ENTRANCE SECTION - PAINT TO MATCH WALL
16. VENEER SLIP BLOCK CHIL WANGCOT
17. STAINED WOOD COLUMNS, BEAMS, AND RAFTERS

MATERIAL AND COLOR SCHEDULE

SYMBOL	MATERIAL	COLOR	MANUFACTURER	REMARKS
(A)	E.I.B.S. PAINTED SHEET METAL	BLUE BLOOD NO. 3000, FLAT FIN.	SHERWIN WILLIAMS	
(B)	PRE-FIN. METAL	WHITE ENAMELED PAINT	LITHONIA LIGHTING	AARON'S SPEC
(C)	STAINED WOOD	MATCH EXISTING SHOPPING CENTER	SHERWIN WILLIAMS	
(D)	SLIP® BLOCK CHIL.	ADOBE BUFF	SUPERLITE	
(E)	CORRUGATED STEEL	ZINC GALVANIZED FINISH	-	
(F)	ALUMINUM FRAMING	BLACK ANODIZED	ALCOA	
(G)	PAINT/E.I.B.S.	WHITE ZIN DUEB'S. FLAT FIN.	DUNN EDWARDS	
(H)	PAINT/E.I.B.S.	BIRCHWOOD DUEB'S. FLAT FIN.	DUNN EDWARDS	
(I)	PAINT/E.I.B.S.	LOG CABIN DUEB'S. FLAT FIN.	DUNN EDWARDS	
(K)	PAINTED SHEET METAL	MATCH EXISTING FLAT FIN.	SHERWIN WILLIAMS	

ELEVATIONS NOTE:

ALL COLORS TO MATCH EXISTING PALETTE



Questions?

Thank you.

