

TOWN OF
QUEEN CREEK
ARIZONA

Hangars at the Pegasus

Site Plan (Case No. SP13-033)

Preliminary Plat (Case No. SD13-032)

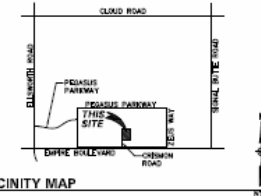
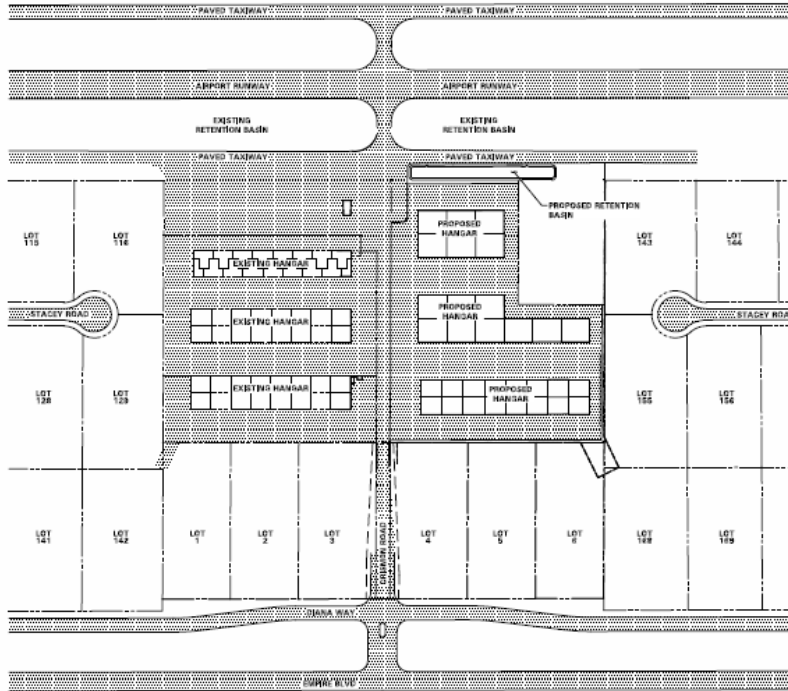


Aerial Photo Exhibit



Overall Site Plan

OVERALL SITE PLAN FOR HANGARS AT THE PEGASUS NORTH OF NEC CRISMON ALIGNMENT & EMPIRE BOULEVARD QUEEN CREEK, ARIZONA

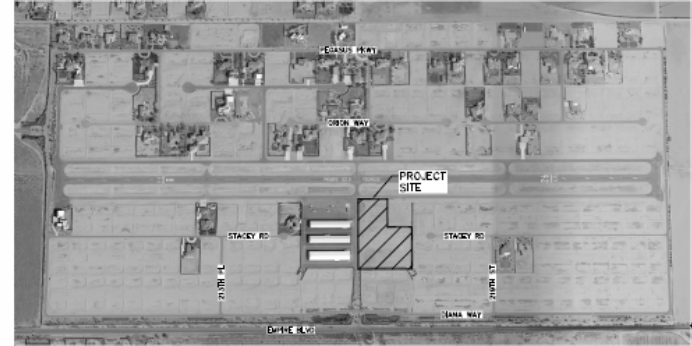


VICINITY MAP

OWNER
HANGARS AT THE PEGASUS, LLC
P.O. BOX 459
QUEEN CREEK, AZ 85142
PHONE (480) 478-3362
FAX (480) 404-8227
CONTACT NELSON GARRISON

CIVIL ENGINEER
HUNTER ENGINEERING, INC.
10430 N. 74th STREET SUITE 200
SCOTTSDALE, ARIZONA 85258
PHONE (480) 591-3985
FAX (480) 591-3986
CONTACT JOE BURKE, P.E.

LEGEND
RIGHT OF WAY
PROPERTY LINE
EXISTING
PROPOSED PAVEMENT



OVERALL AERIAL MAP

REV	DATE	BY	CHKD

HUNTER ENGINEERING
CIVIL AND SURVEY
10400 NORTH 74TH AVENUE
SCOTTSDALE, ARIZONA 85258
P. 480.591.3985
F. 480.591.3986



OVERALL SITE PLAN
FOR
HANGARS AT THE PEGASUS
NEC CRISMON ROAD ALIGNMENT & EMPIRE BOULEVARD
QUEEN CREEK, ARIZONA

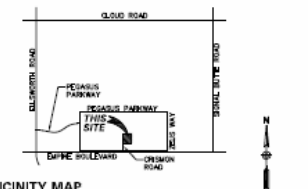
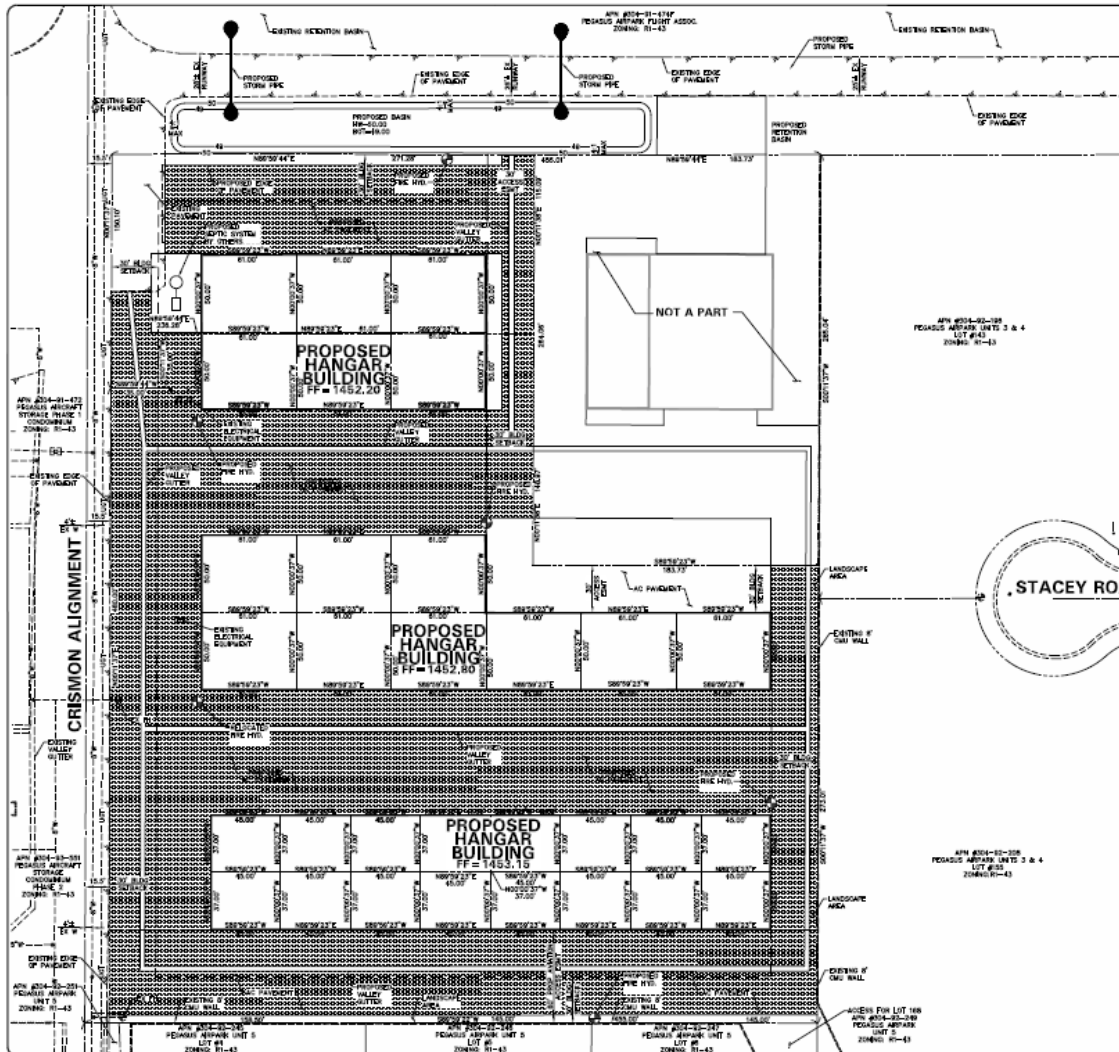
THIS PLAN IS NOT APPROVED FOR CONSTRUCTION WITHOUT AN APPROVED SPECIFIC FROM THE JURISDICTION RESPONSIBLE.

PROJECT NO.: PEGAD001
SCALE: 1"=100'
SHEET: 2



Proposed Site Plan

PRELIMINARY SITE PLAN FOR HANGARS AT THE PEGASUS NORTH OF NEC CRISMON ROAD ALIGNMENT & EMPIRE BOULEVARD QUEEN CREEK, ARIZONA



OWNER REPRESENTATIVE
HANGARS AT PEGASUS, LLC
P.O. BOX 659
QUEEN CREEK, AZ 85142
PHONE (602) 478-6392
FAX (602) 478-6392
CONTACT NELSON GARRISON

CIVIL ENGINEER
HUNTER ENGINEERING, INC.
10450 N. 79th STREET SUITE 200
SCOTTSDALE, ARIZONA 85258
PHONE (480) 991-3885
FAX (480) 991-3885
CONTACT JIE BURKE PE

EXISTING ZONING: R1-43
PROPOSED ZONING: R1-43

NET ACREAGE: 4,715 ± AC
GROSS ACREAGE: 4,715 ± AC

SITE PLAN INFORMATION
OFF-STREET PARKING: NO OFF-STREET PARKING & PEDESTRIAN AREAS REQUIRED (R1-43 ZONING).
1. OUTDOOR STORAGE: NO OUTDOOR STORAGE AREAS PROPOSED.

LEGEND

- RIGHT OF WAY
- PROPERTY LINE
- CONTIGUOUS BOUNDARY
- PROPOSED FIRE LINE
- PROPOSED RANED LINE
- PROPOSED PAVEMENT

NO.	DATE	SECTION	BY

DATE: 07/20/2011
SCALE: 1"=30'
SHEET: 1

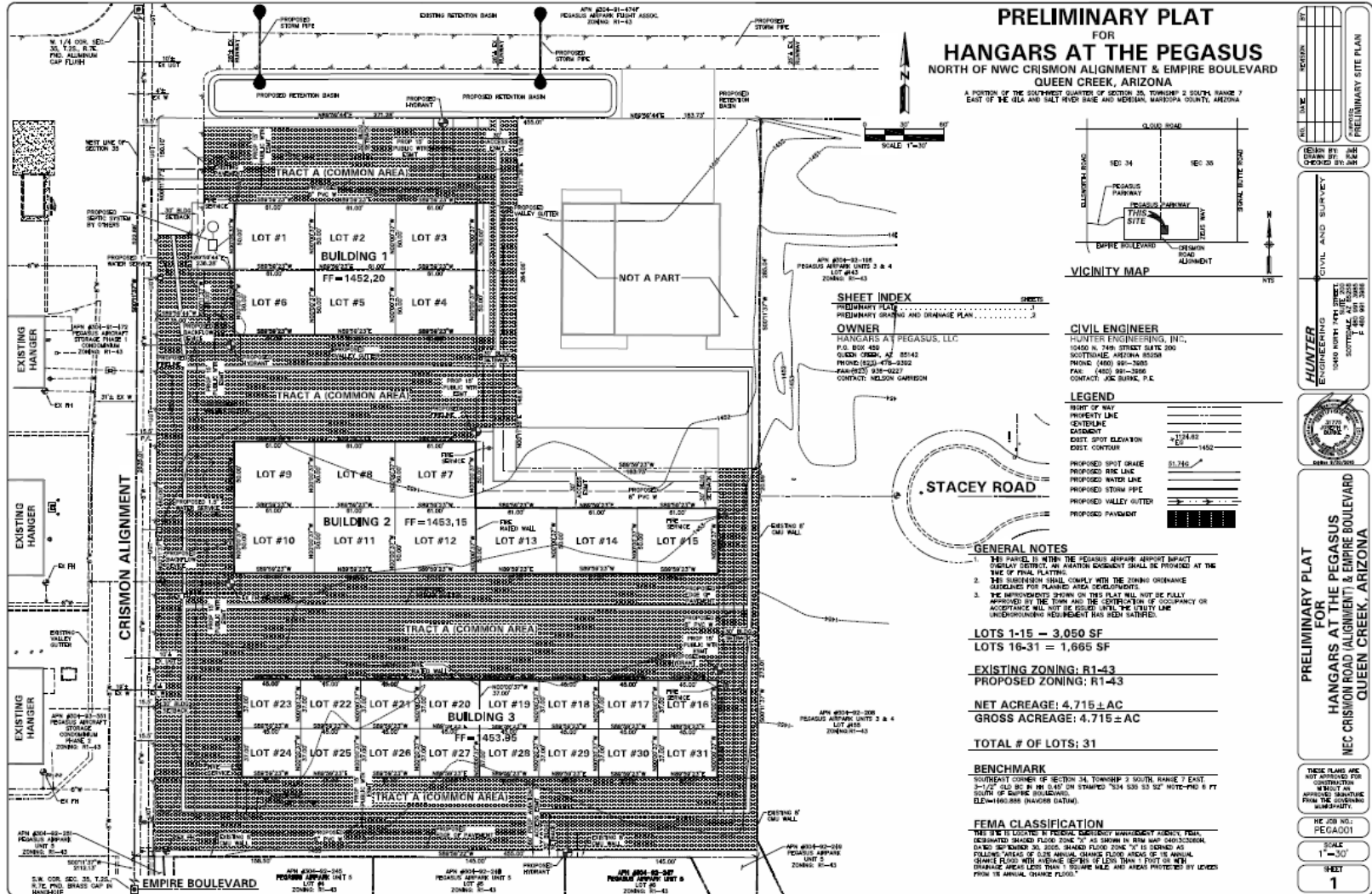
CIVIL AND SURVEY
HUNTER ENGINEERING, INC.
10450 N. 79th STREET SUITE 200
SCOTTSDALE, ARIZONA 85258
PHONE (480) 991-3885
FAX (480) 991-3885
CONTACT JIE BURKE PE

PRELIMINARY SITE PLAN FOR HANGARS AT THE PEGASUS (ALIGNMENT) & EMPIRE BOULEVARD QUEEN CREEK, ARIZONA

THIS PLAN IS NOT VALID FOR CONSTRUCTION UNLESS IT IS APPROVED IN WHOLE OR IN PART BY THE APPLICABLE JURISDICTION.
HC 208 NO. 1
REG-001
SCALE
1"=30'
SHEET
1



Proposed Preliminary Plat



PRELIMINARY SITE PLAN

DATE: _____

SCALE: 1"=30'

OWNER: HANGARS AT PEGASUS, LLC

CIVIL ENGINEER: HUNTER ENGINEERING, INC.

PRELIMINARY PLAT FOR HANGARS AT THE PEGASUS NWC CRISMON ROAD ALIGNMENT & EMPIRE BOULEVARD QUEEN CREEK, ARIZONA

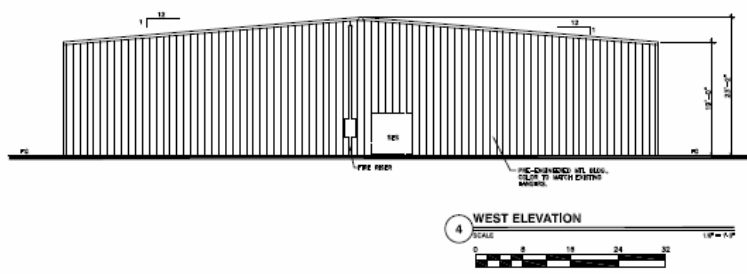
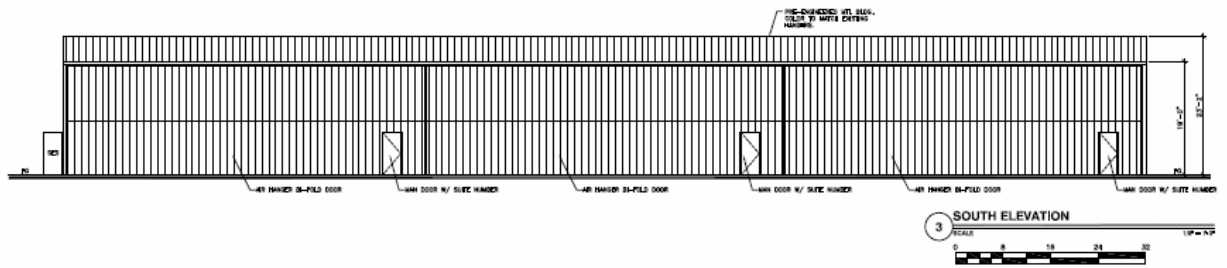
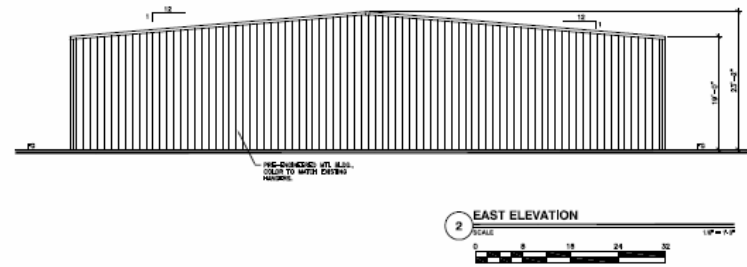
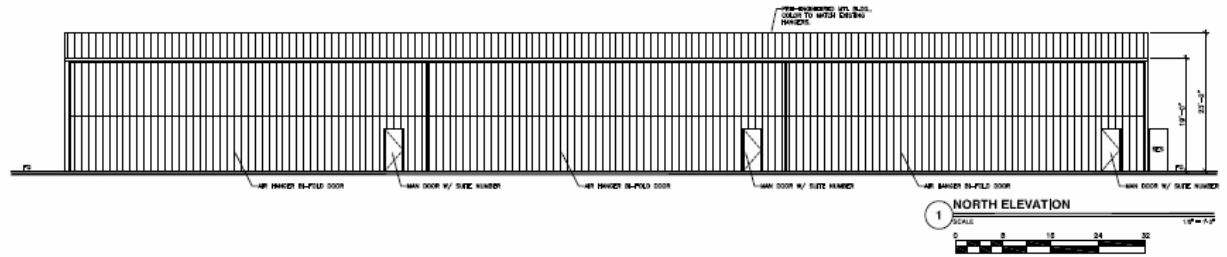
THIS PLAT IS NOT VALID FOR CONSTRUCTION UNLESS IT MEETS ALL APPLICABLE REQUIREMENTS FROM THE GOVERNING MUNICIPALITY.

REVISION NO.: PEGASUS01

SCALE: 1"=30'

SHEET: 1

Proposed Building Elevations

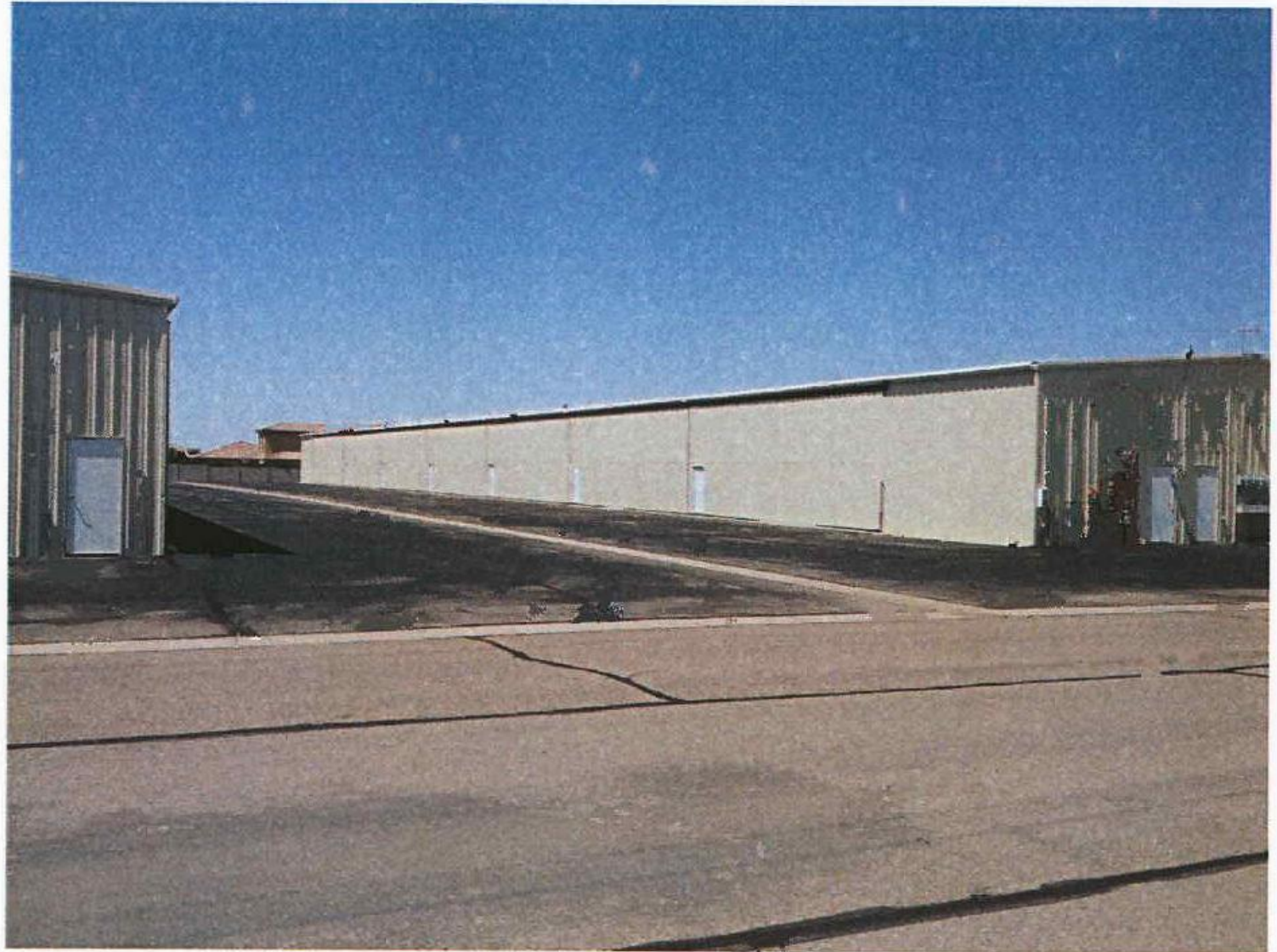


PEGASUS AIRPORT HANGERS

SCALE: 1/8" = 1'-0" (SEE NOTE 1)

Rev to Iss
PROJECT NO.
DRAWN BY: JTC
CHECKED BY: MC
EXTERIOR ELEVATIONS
A-210

Existing Hangars



Questions?

Thank you.

