

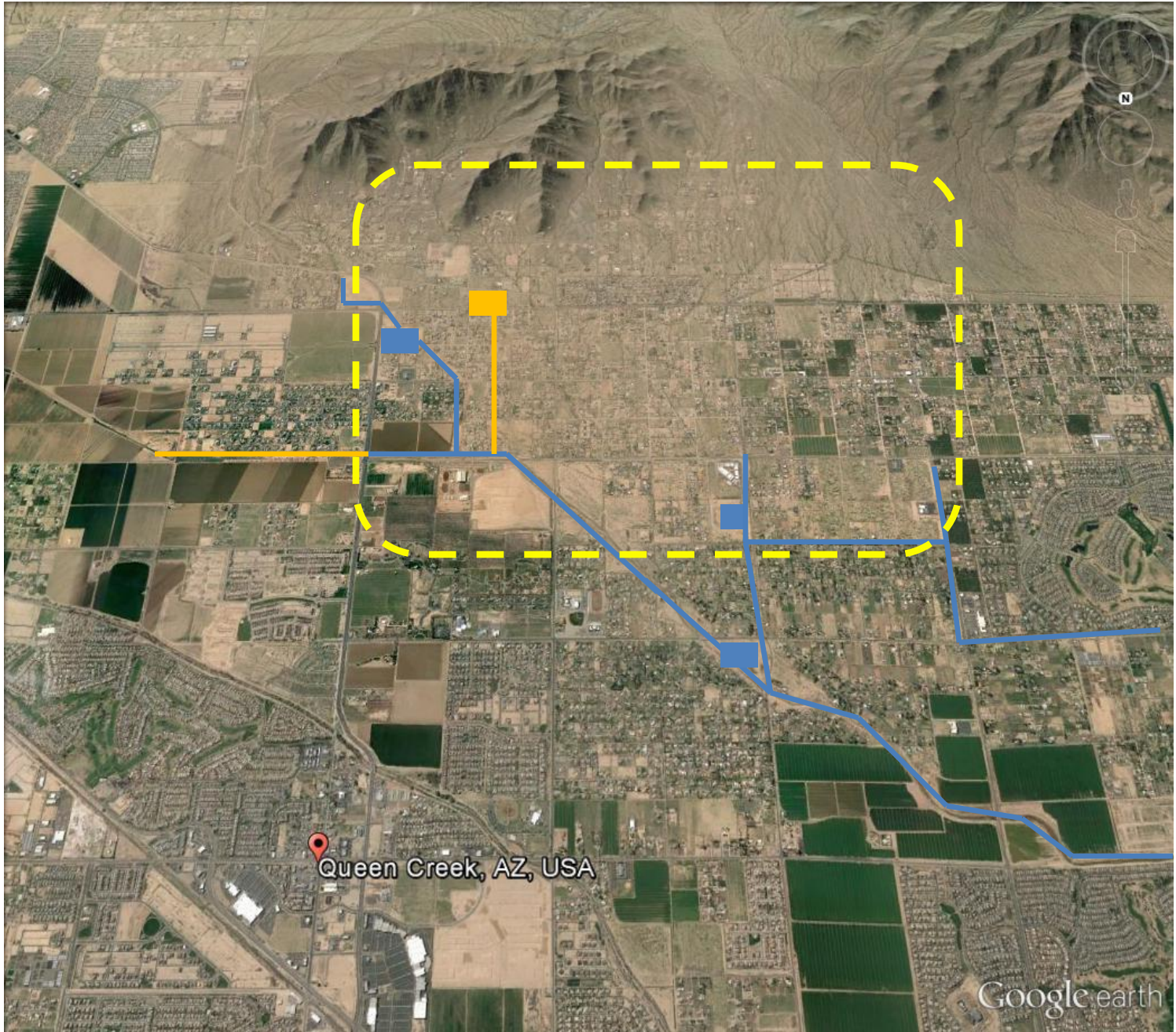
TOWN OF
QUEEN CREEK
ARIZONA

Storm Event 9.9.13

Troy White – Public Works Division Manager

September 18, 2013

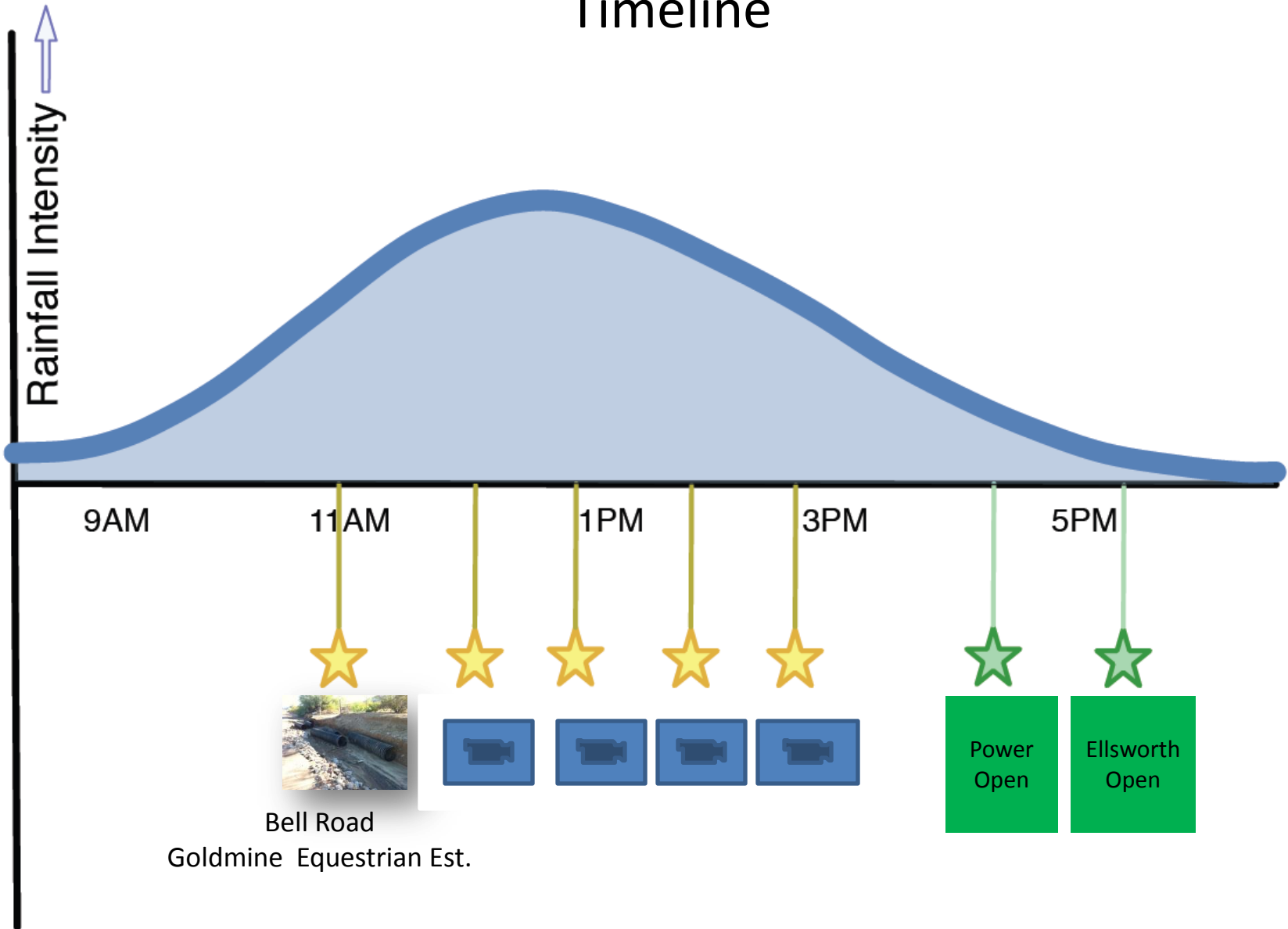




Queen Creek, AZ, USA

Google earth

9.9.13 Storm Event Timeline



Cloud Channel Outlet



Sonoqui Wash at Sossaman



Power Road Channel at Cloud Road



Riggs and 194th St.



Ellsworth south of Cloud



Riggs west of Hawes



Bell south of Empire



Quail Trail south of Empire



Recognize

- Streets Crew- Jan Martin, Luis Padilla, Tony Garcia
- MCSO
- Grounds Crew- Rich Purcell, Steve Gonzales
- Fire Department



Questions

