



# Queen Creek Drainage Project Updates

August 21, 2013

Chris Dovel – Town Engineer, Floodplain Administrator

Burke Lokey – Project Manager, Flood Control District Maricopa County

Jennifer Pokorski – Project Manager, Flood Control District Maricopa County



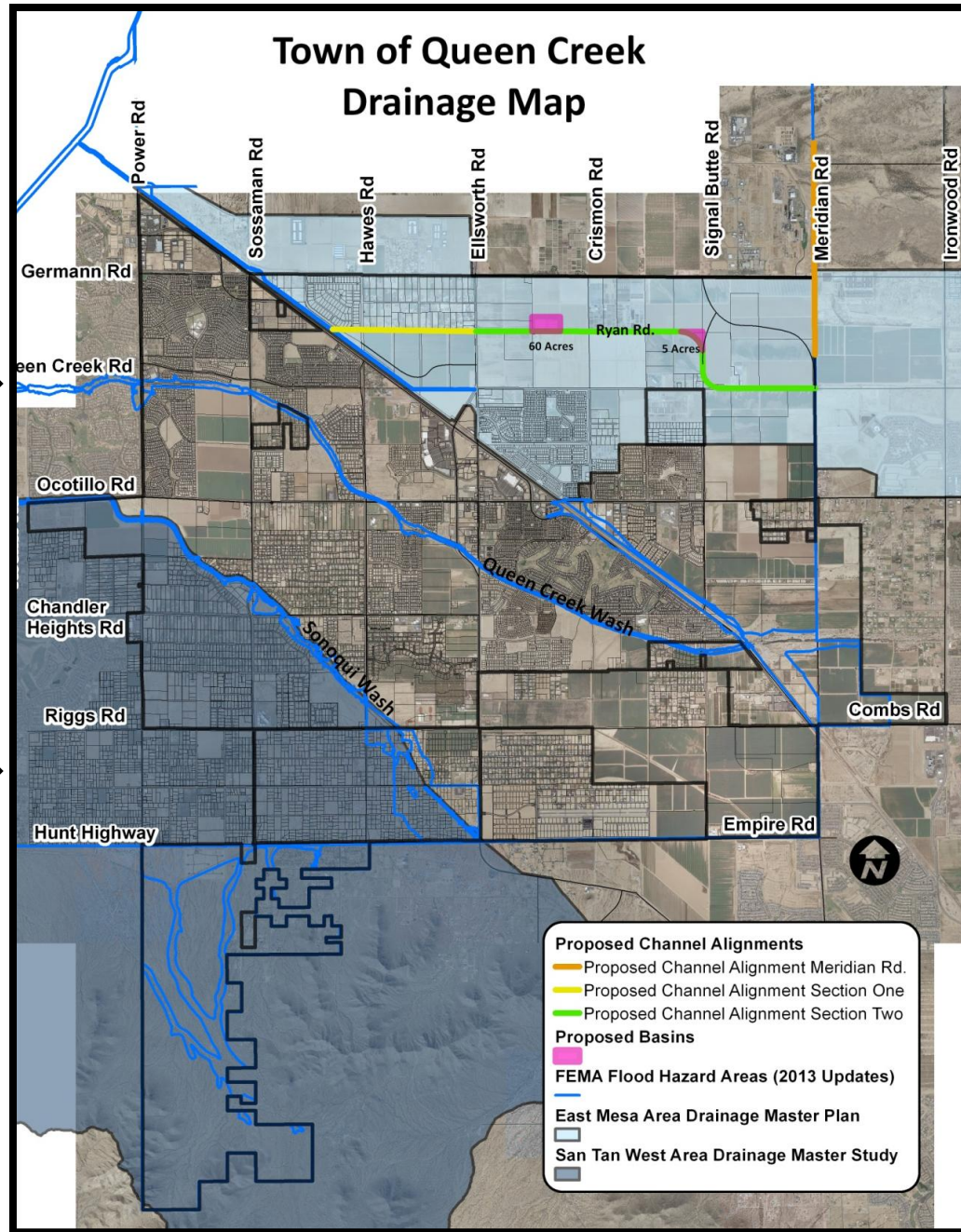
1

2013 FEMA  
Flood Insurance  
Rate Map (FIRM)  
Revisions



2

San Tan West  
Area Drainage  
Master Study



3

East Mesa Area  
Drainage Master  
Plan update



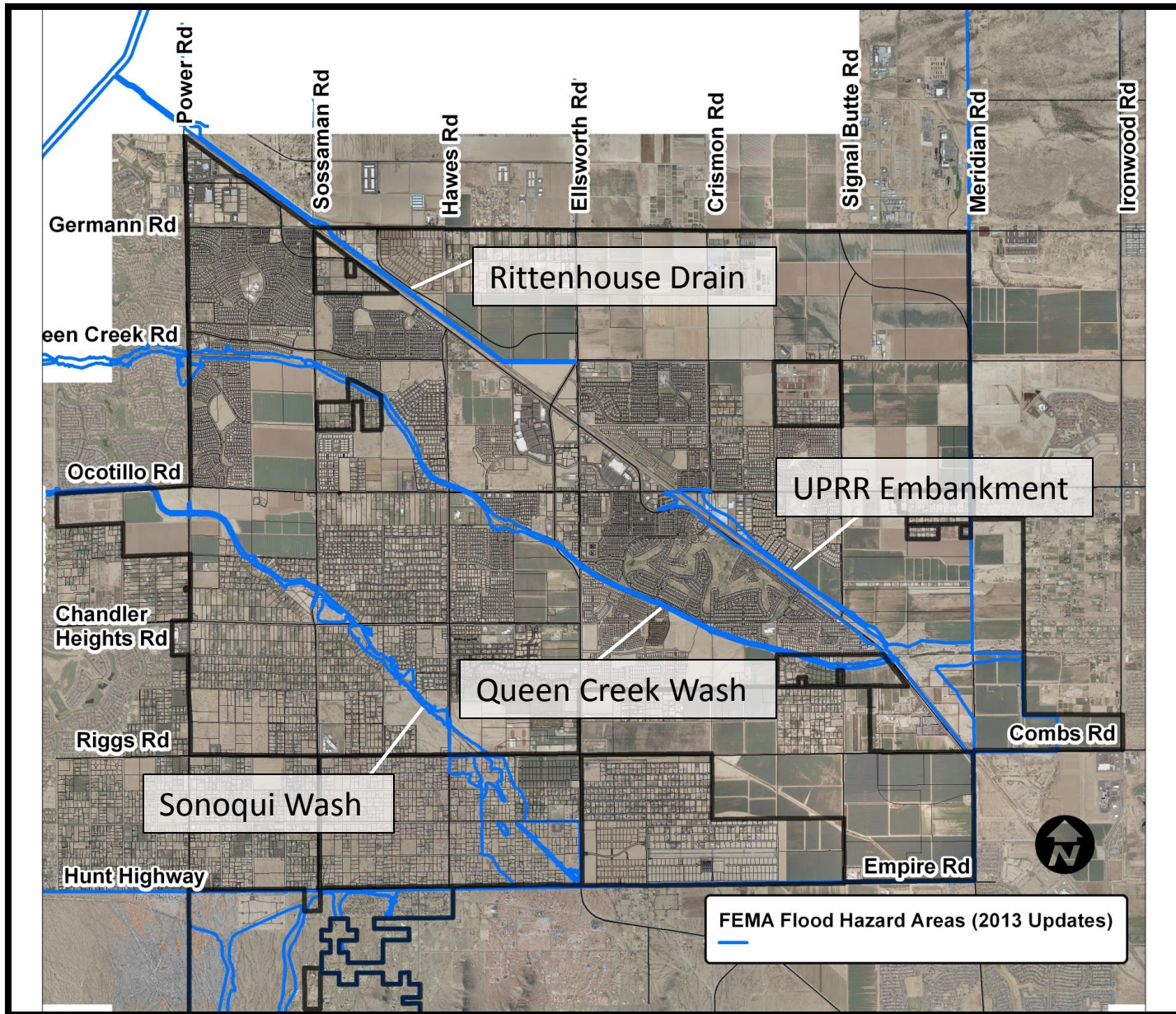
# FEMA Flood Map Revisions

- Summer 2008 – FEMA Begins Maricopa County DFIRM Project
- Dec. 2010 – FEMA Distributes Preliminary Map Revisions
- Oct. 2011 to Jan. 2012 – 90 Day Appeal/Protest Period
- April 2013 FEMA mails Letters of Final Determination to Communities
- April 2013 to Oct. 2013 – 6 month community compliance period
- Oct. 2013 New Maps become effective





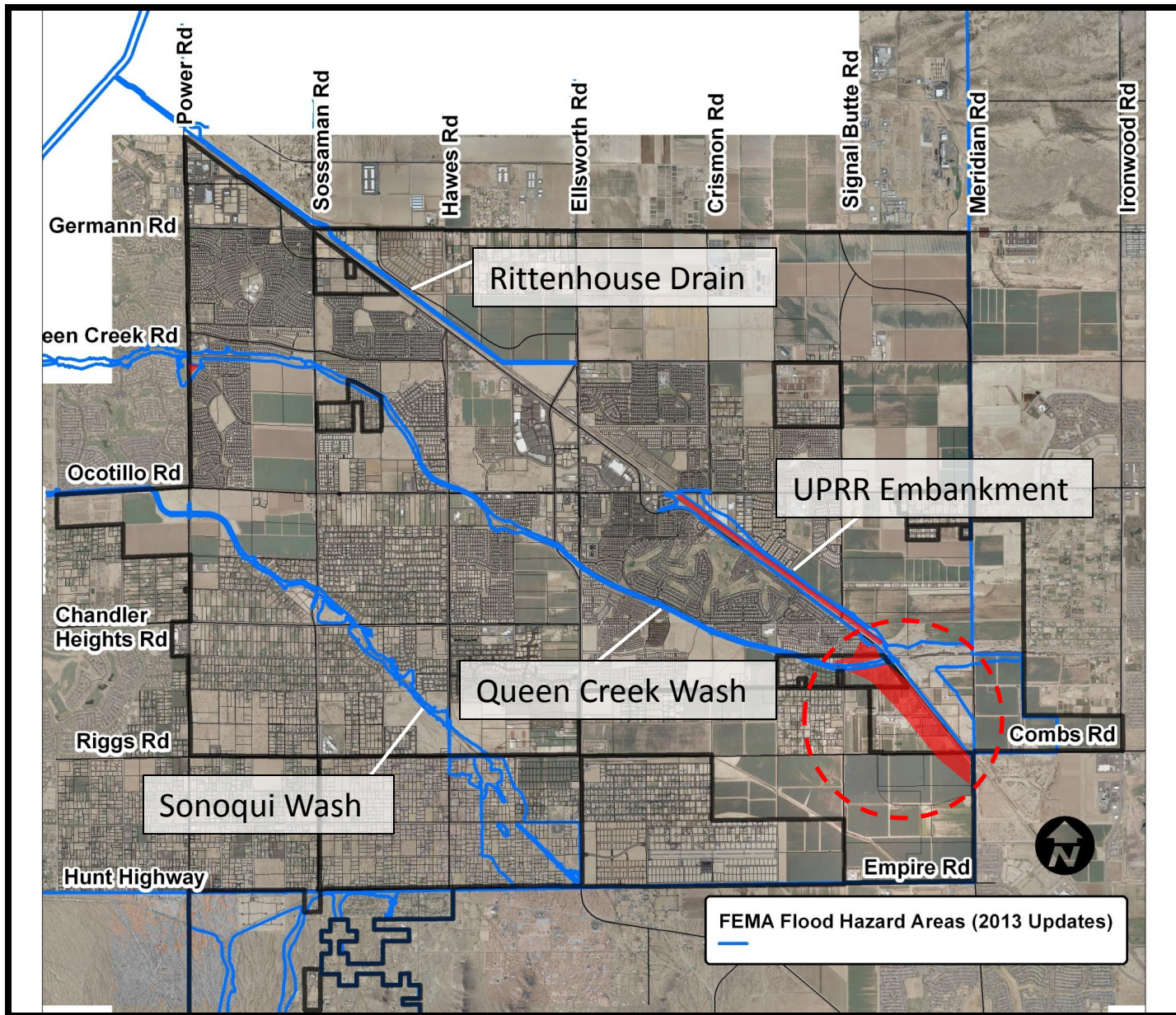
# FEMA Special Flood Hazard Areas – Queen Creek





# Preliminary 2010 FEMA FIRM MAP

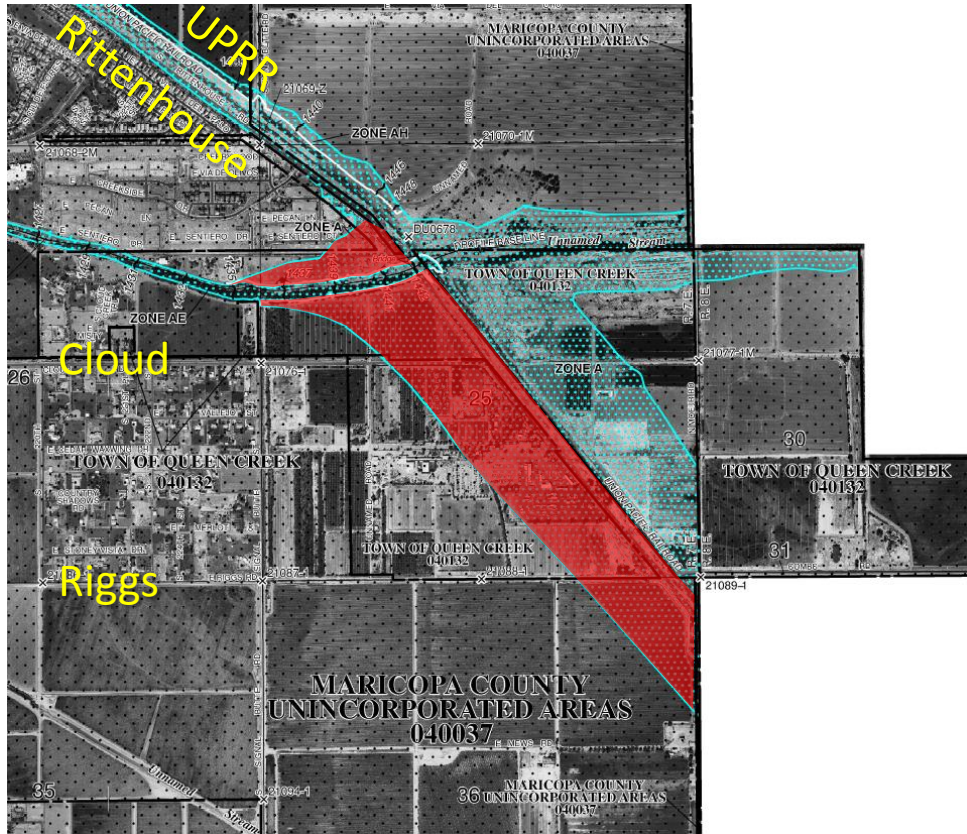
## New Flood Hazard Area – Downstream UPRR



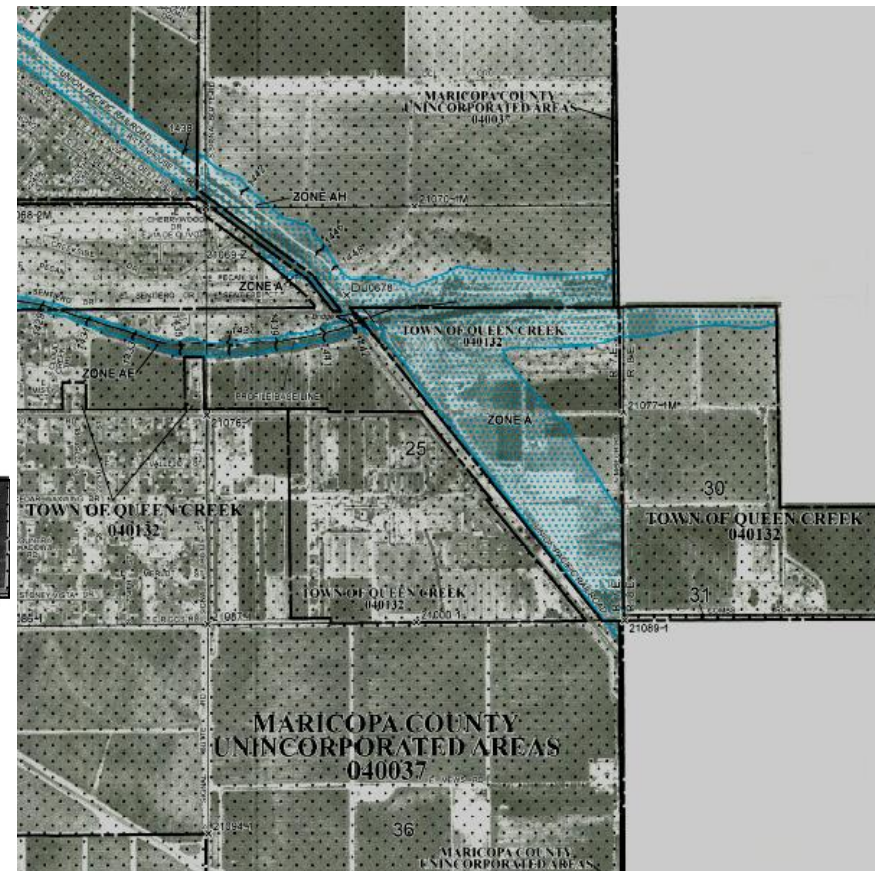


# Formal 90-Day FEMA Appeal Process October 2011 – January 2012

FEMA 2010 "PRELIMINARY"  
Flood Insurance Rate Map (FIRM)



FEMA 2013 "FINAL"  
Flood Insurance Rate Map (FIRM)









# **SAN TAN WEST AREA DRAINAGE MASTER STUDY**

Burke Lokey  
Project Manager

---

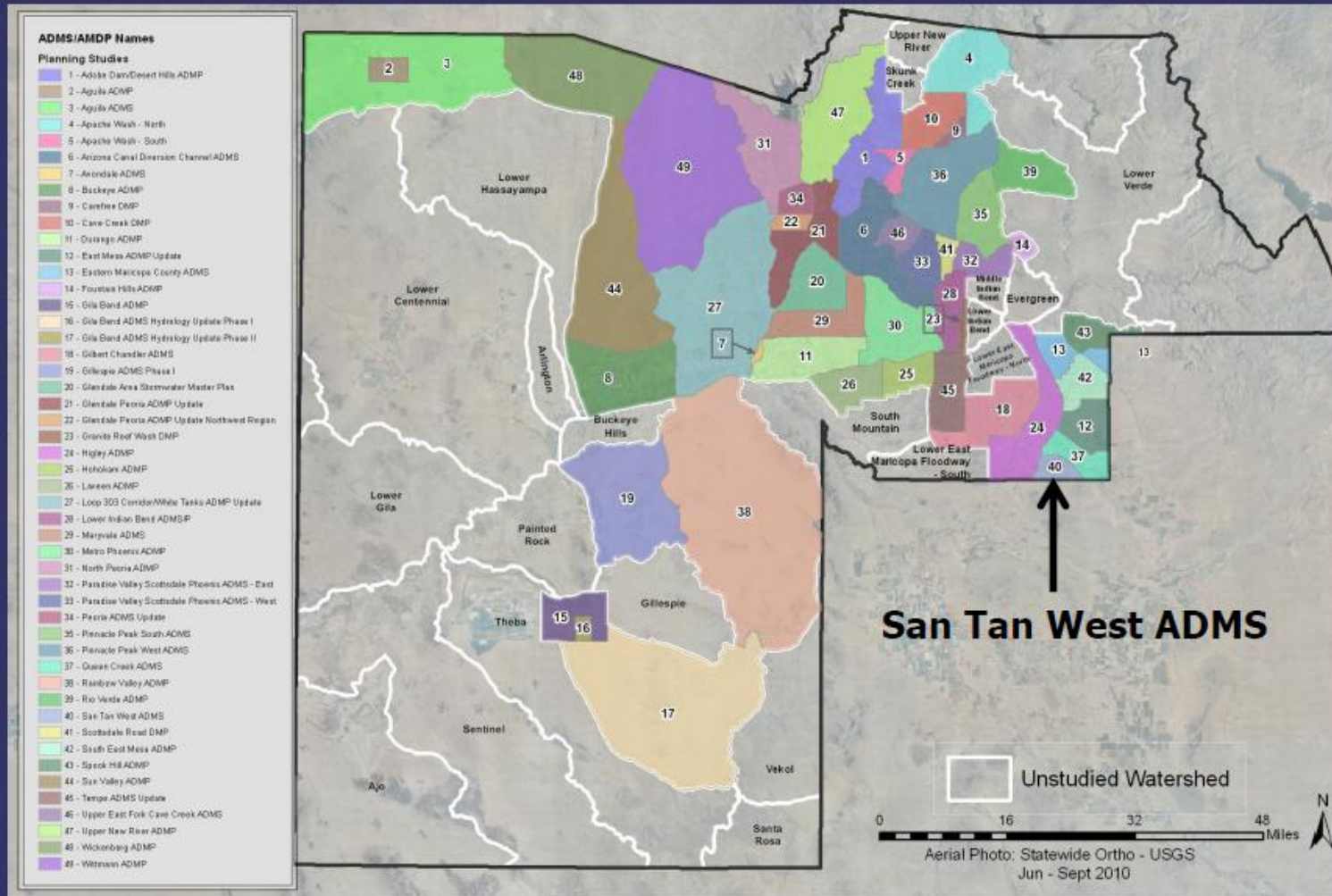


# SAN TAN WEST ADMS

- Area Drainage Master Study of the Sonoqui Wash / San Tan area
- Project cost: ~ \$652,000
- Duration
- Stakeholders

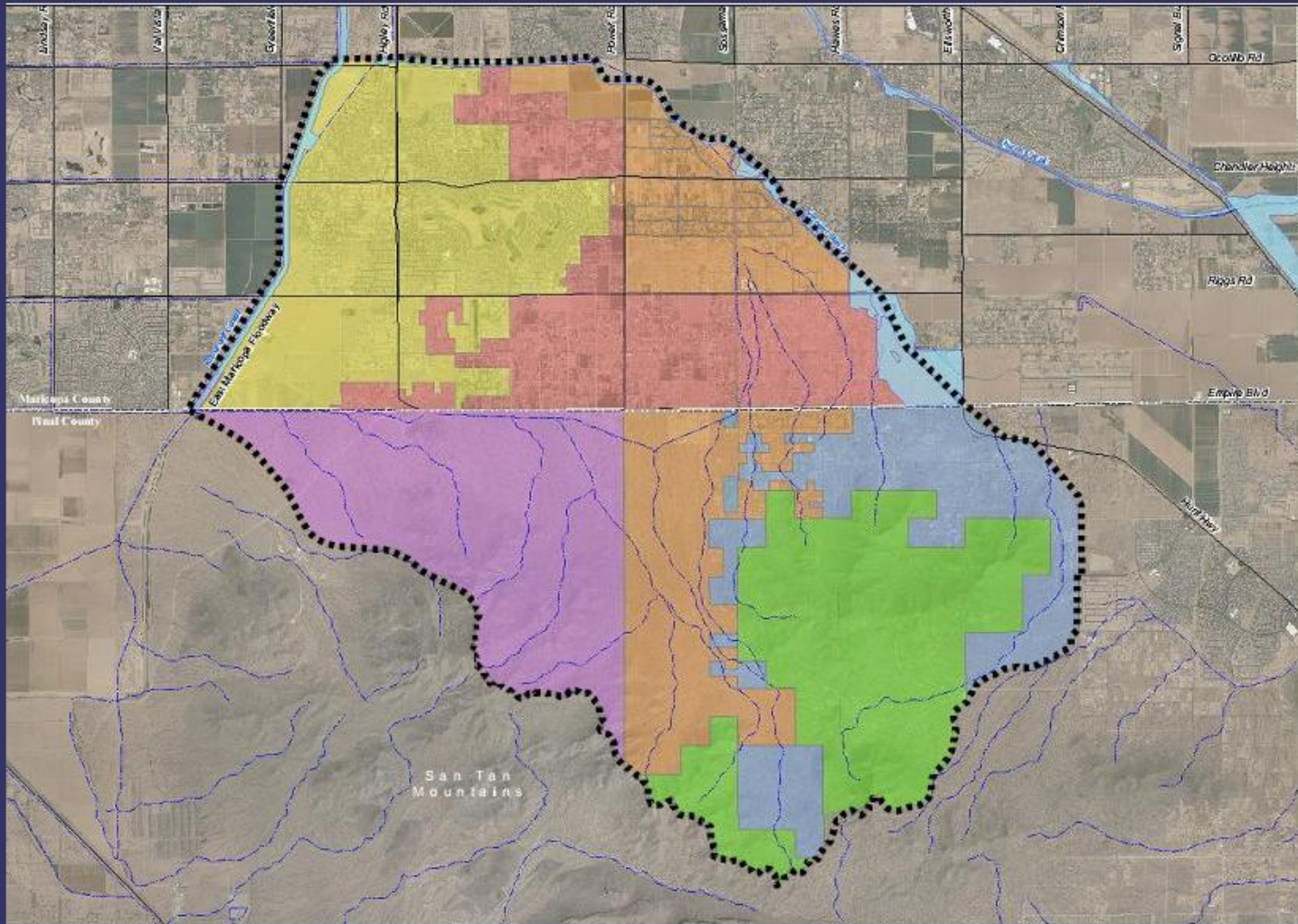


# FCD Projects – ADMS/ADMP





# SAN TAN WEST ADMS



# Project Goals

- Identify & document drainage and flooding problems
- Develop regional hydrology model
- Provide a Flood Hazard Assessment
- Determine practicality of future CIP projects













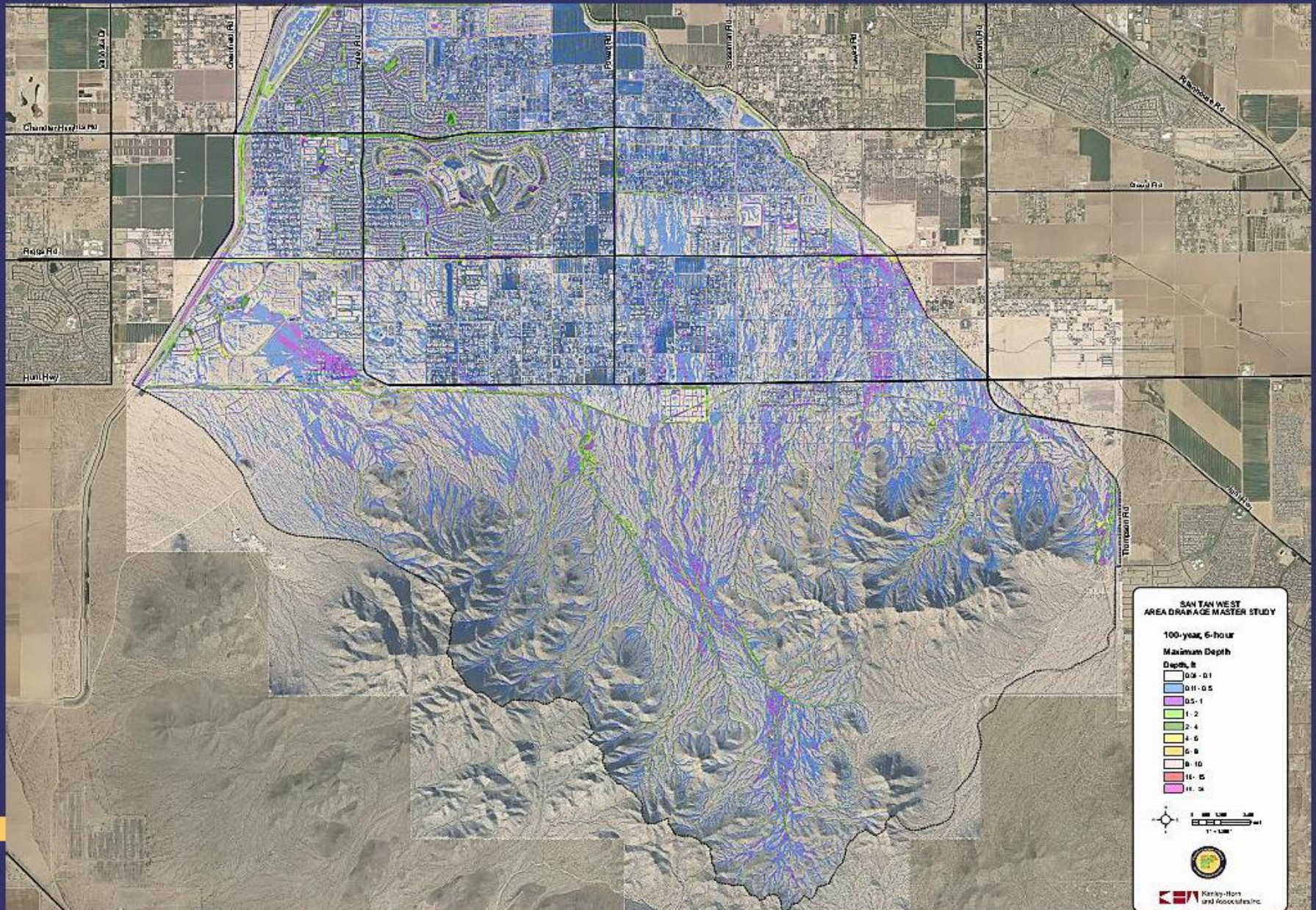
# Project Status

- Data Collection completed Dec 2012
- First public meeting - May 7, 2013
- Final regional hydrology model will be complete in September
- Draft Flood Hazard Assessment currently in review
- Setting final stakeholder and public meetings for October



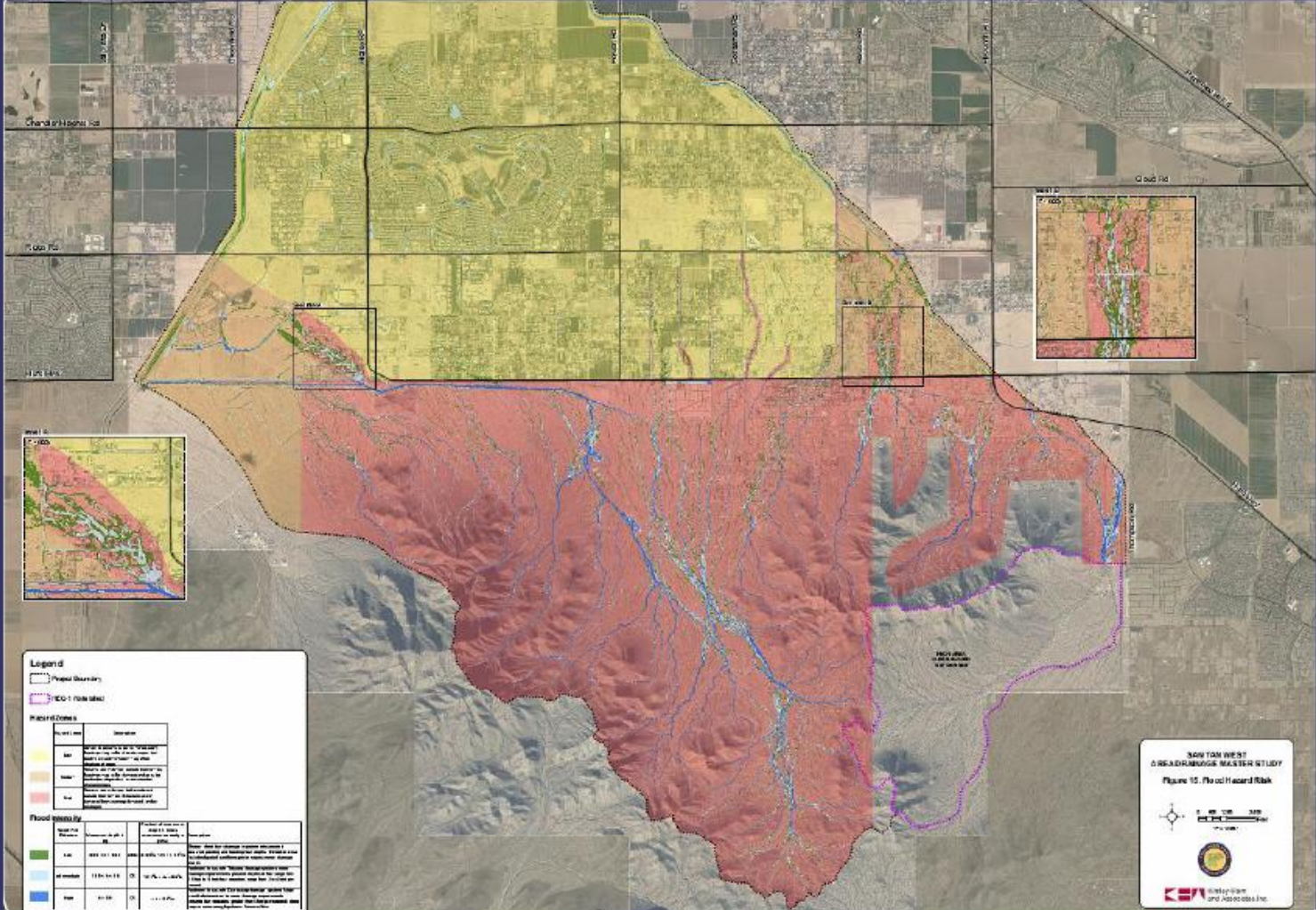


# Preliminary Results – Max Depth





# Preliminary Results – Flood Hazard





# Next Steps

- Finish technical reviews
- Stakeholder Meetings
- ID targets of opportunity (CIP)
- 2<sup>nd</sup> Public Meeting - October
- Publish final study documents with results in November



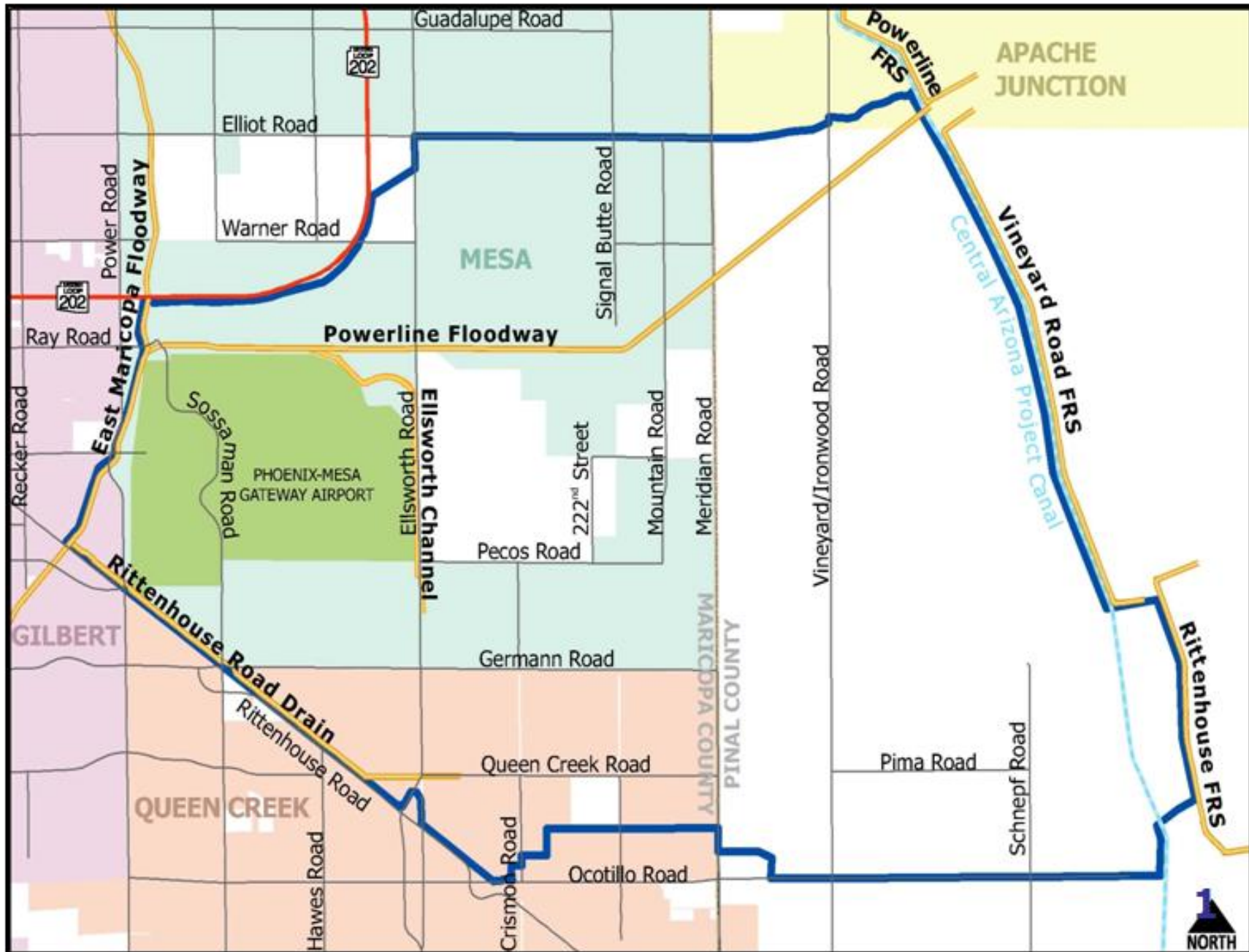


# **EAST MESA AREA DRAINAGE MASTER PLAN UPDATE**

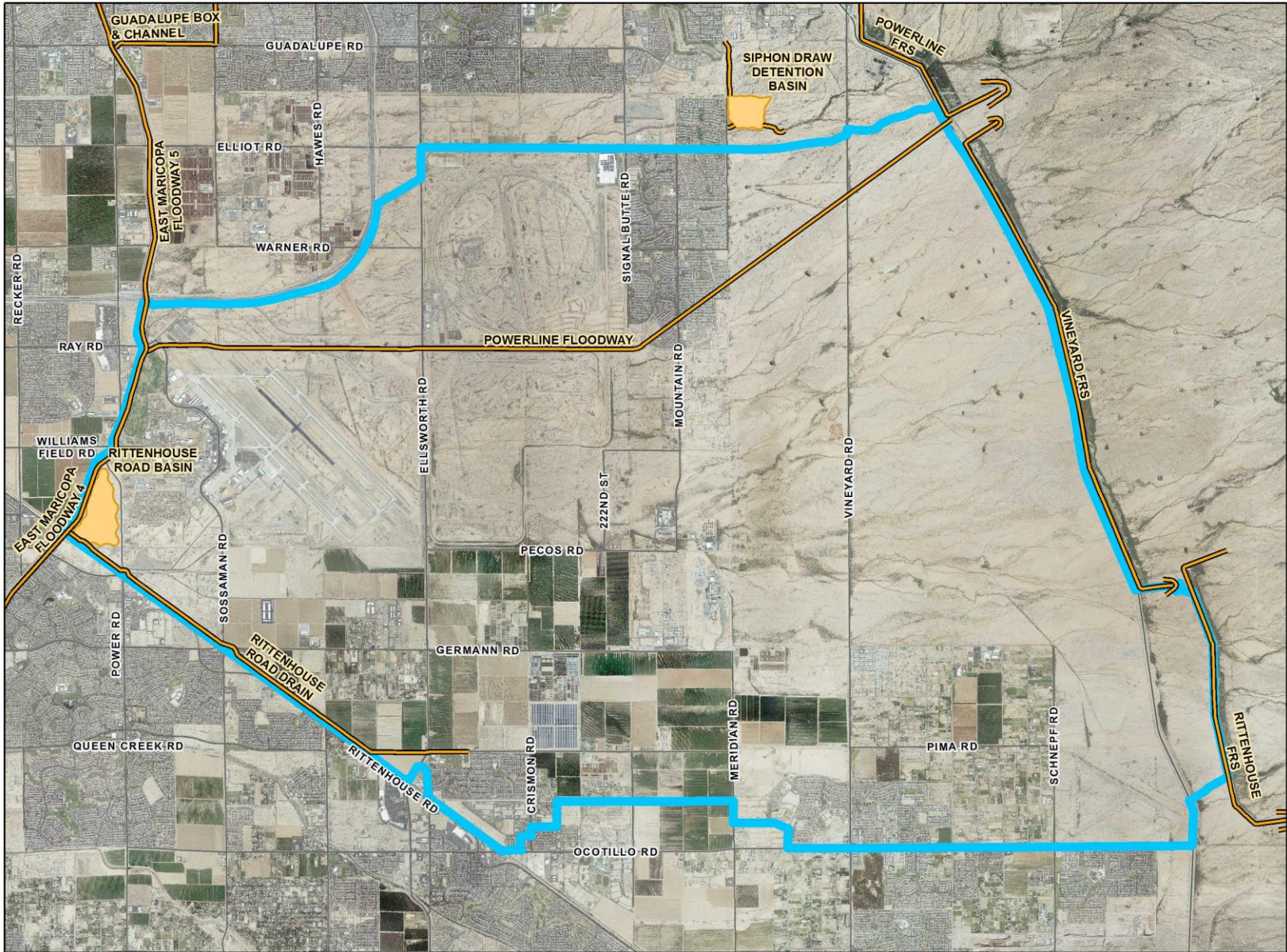
Jennifer Pokorski  
Project Manager

---











# Project Status

- Aug. 2011: Hydrology Analysis Completed
- Feb. 2012: ADMP Update Kick-off
- April-June 2012: Initial Stakeholder & Public Meetings
- Summer 2012: Development of Preliminary Alternatives



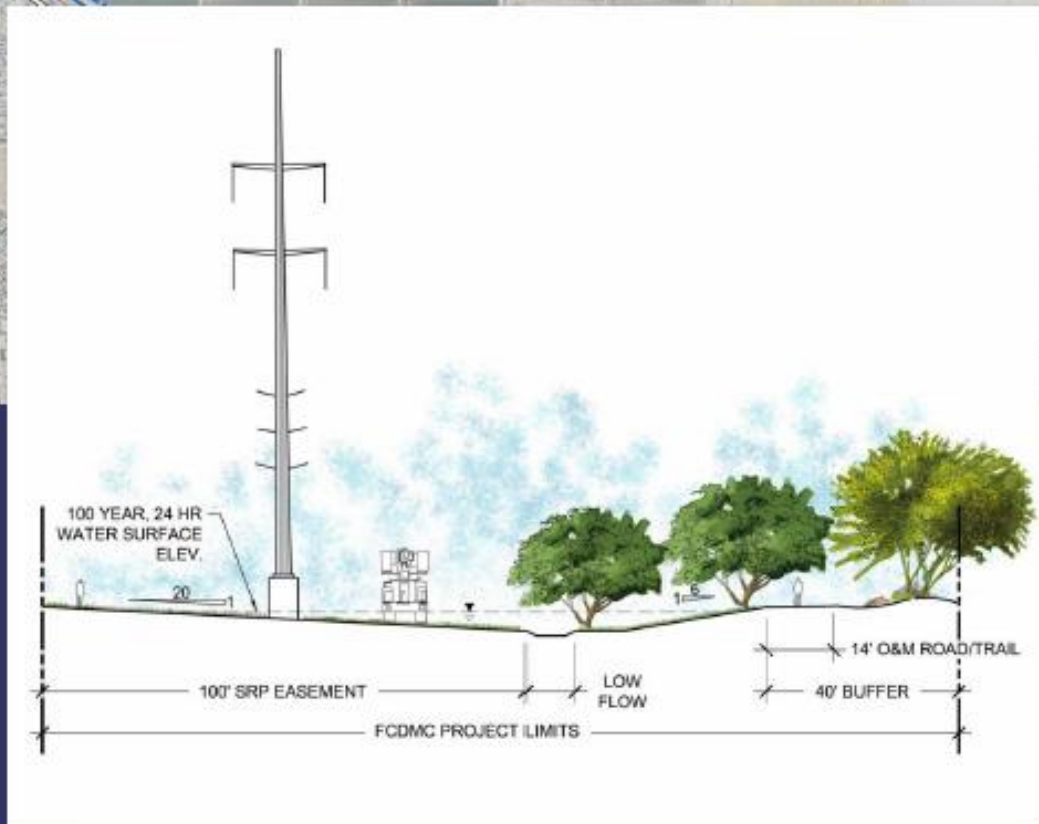
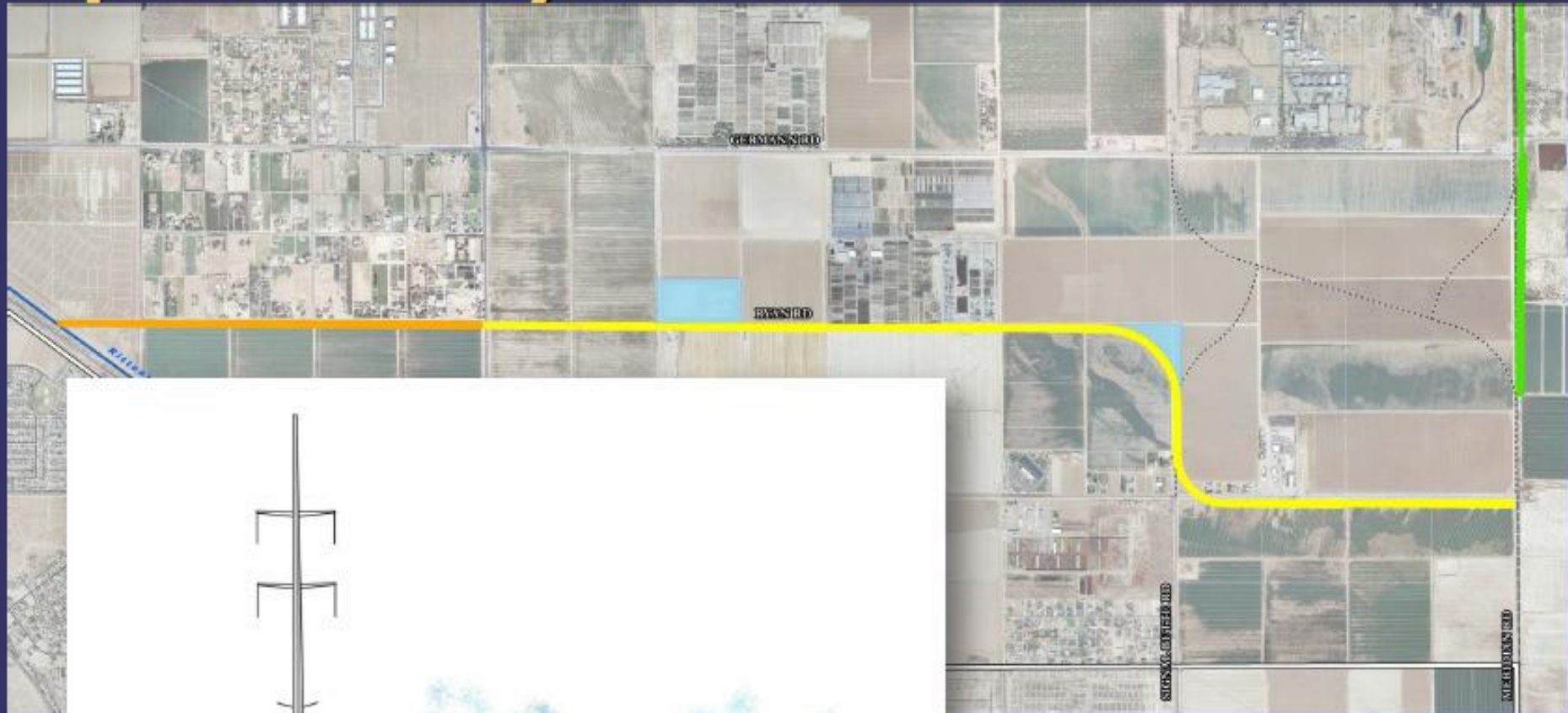
# Project Status (con't)

- Fall 2012: Individual Mtgs. w/ Impacted Property Owners
- Jan. 2013 - Present: Refinement of Preliminary Alternatives
  - June 2013: Stakeholder Meeting
  - June 2013: Ellsworth Mini-Farms Open House





# Option #1: Ryan Road Channel




# Option #2: No Further Action

- Develop according to existing regulations
  - Retain 100-year, 2-hour storm on-site
  - Pass through off-site flows (existing condition)
  - Peak discharge, volume and velocity can not exceed pre-development conditions.
  - Can not concentrate sheet flows.



# Next Steps

	Sept.	Oct.	Nov.	Dec.
Select recommended alternative				
Stakeholder Meetings				
Refine recommended alternative				
Stakeholder/Public Meeting				
End of Project				



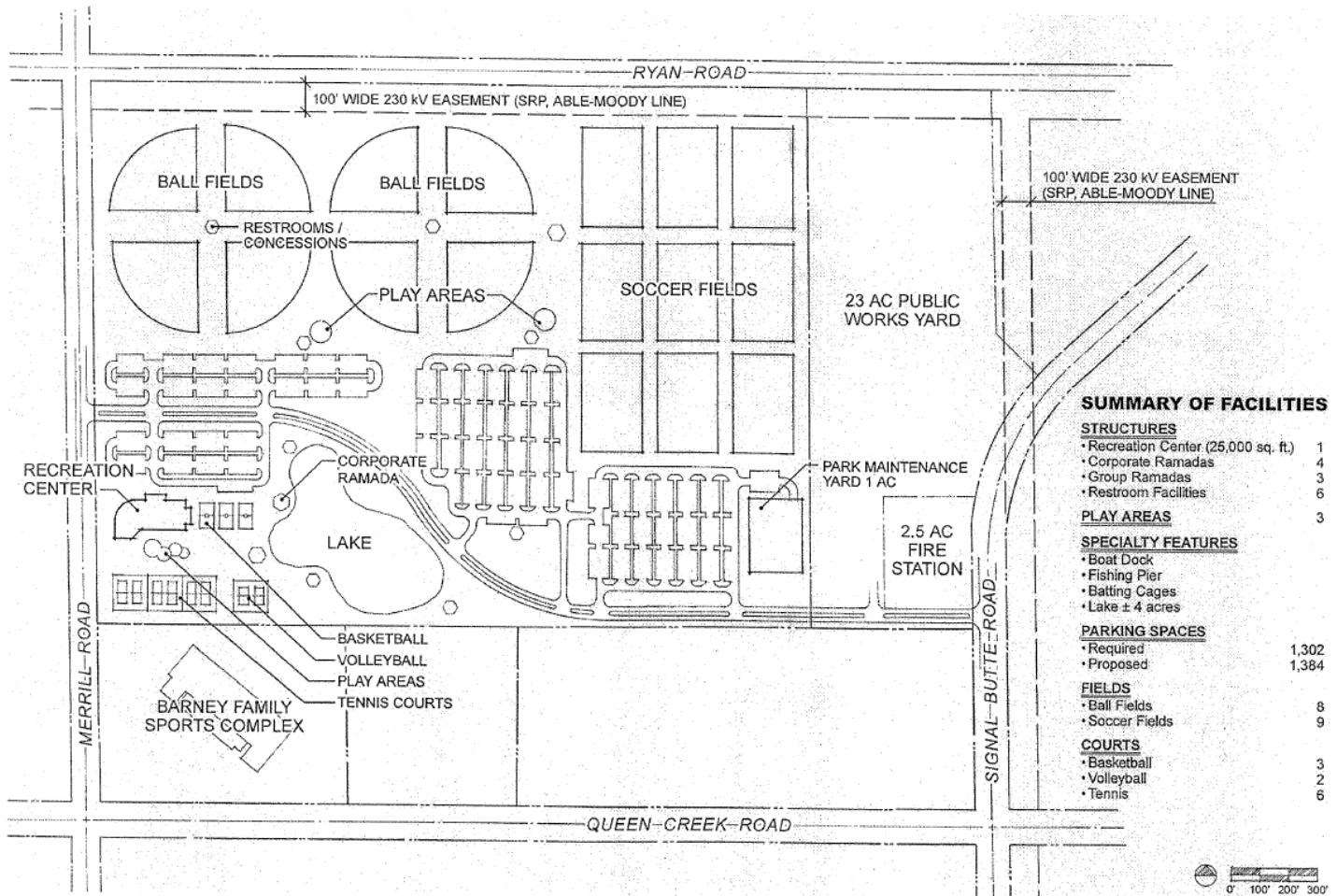




# Questions/Comments



# Preliminary Park Layout



**Queen Creek Sports Complex**

Queen Creek, Arizona

