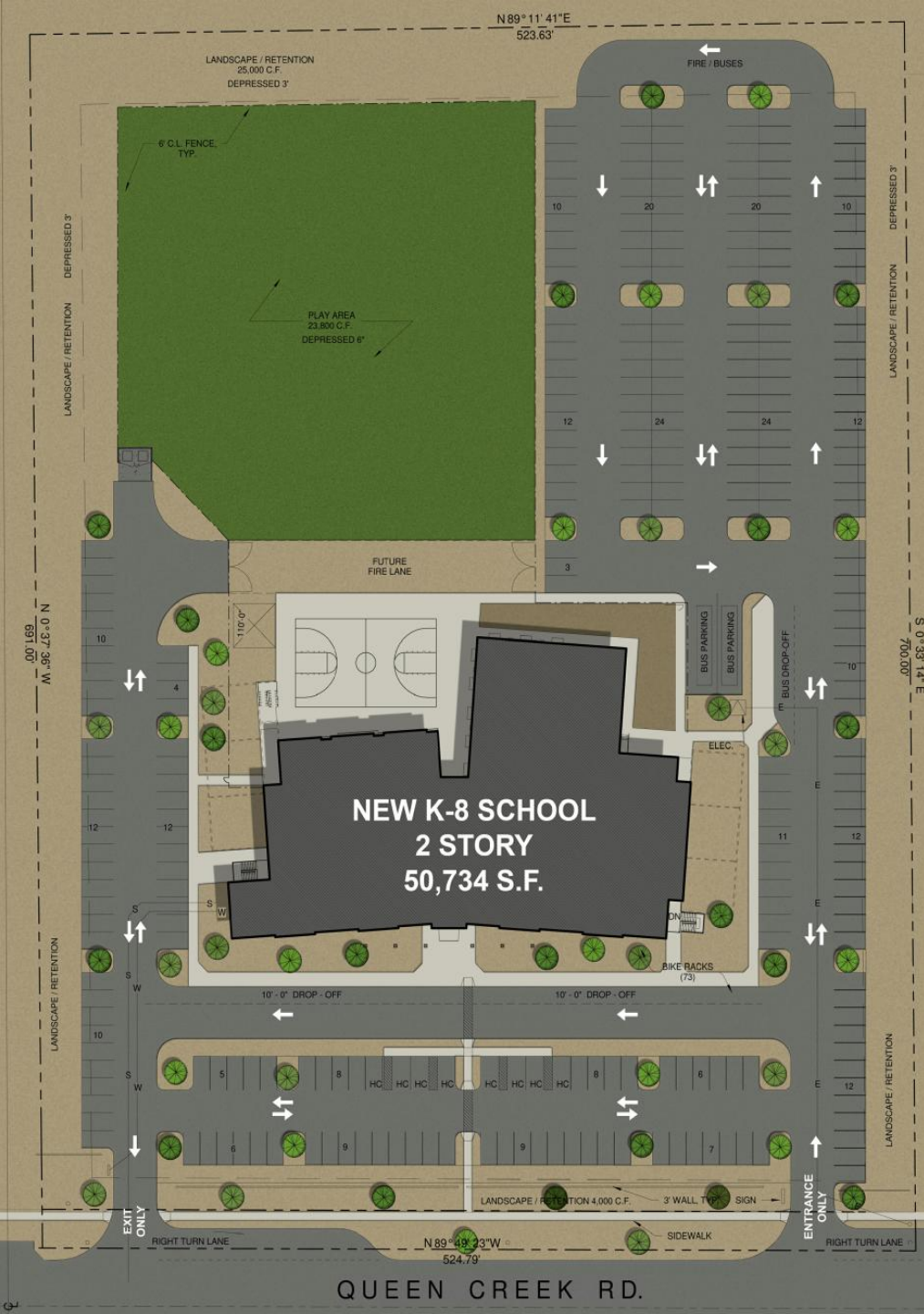


TOWN OF
QUEEN CREEK
ARIZONA

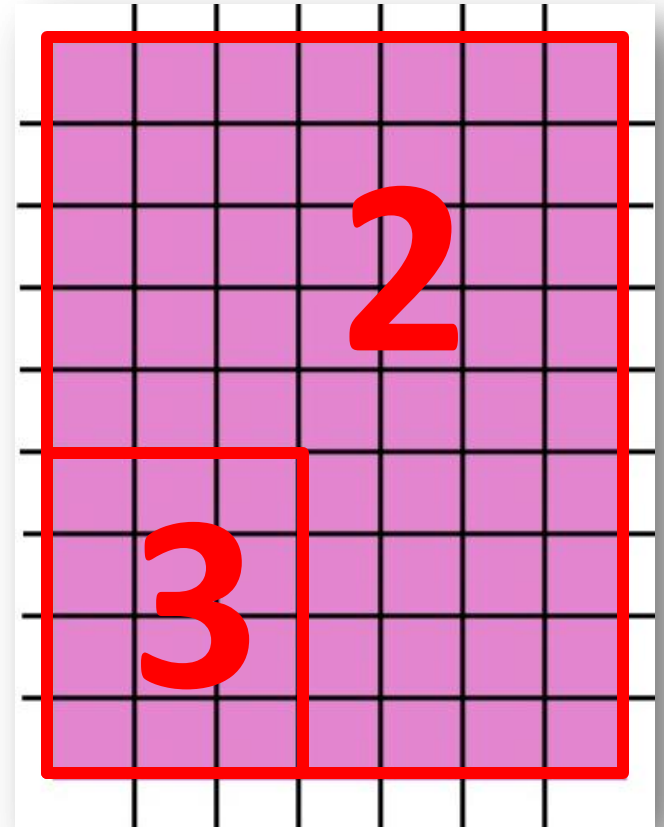
Discussion on School Parking Spaces and Requirements

March 6, 2013



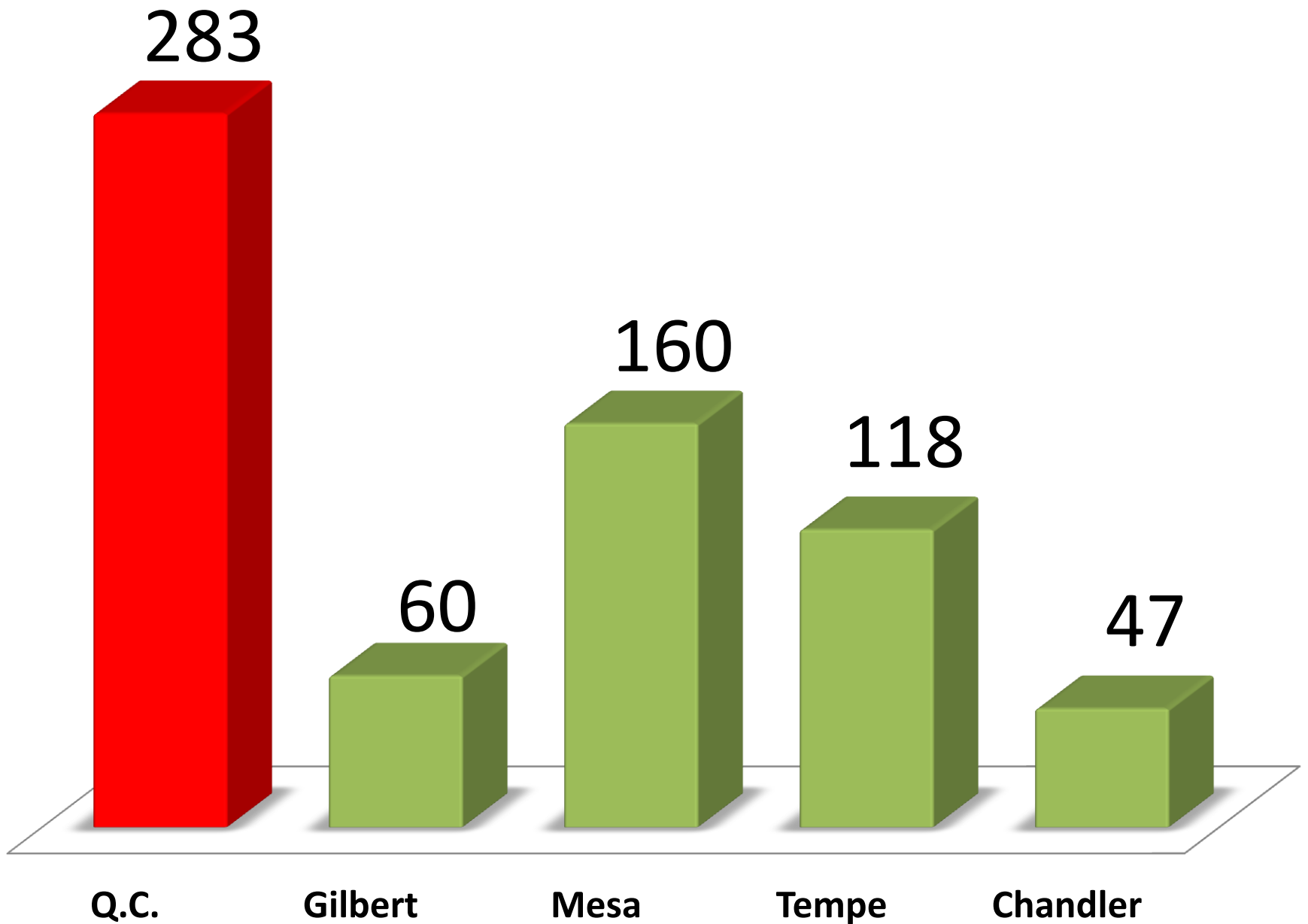






Per Room + Area

Community	Calculation	Minimum Spaces Required
Queen Creek	1 per classroom + 1 per 200 square feet of floor area	283
Gilbert	2 per classroom	60
Mesa	1 per 75 square feet of assembly area + 1 per 600 square feet of remaining floor space	160
Tempe	1 per 300 square feet of classroom + office space	118
Chandler	1 per classroom + 1 per 200 square feet of administrative area	47



WHY?

PARKING PHILOSOPHY

- PARK FOR DAILY USE

THEN

- PLAN FOR SPECIAL EVENTS

Urban Land Institute Report

“The panel recommends that the town review the existing development regulations.... and consider changes”

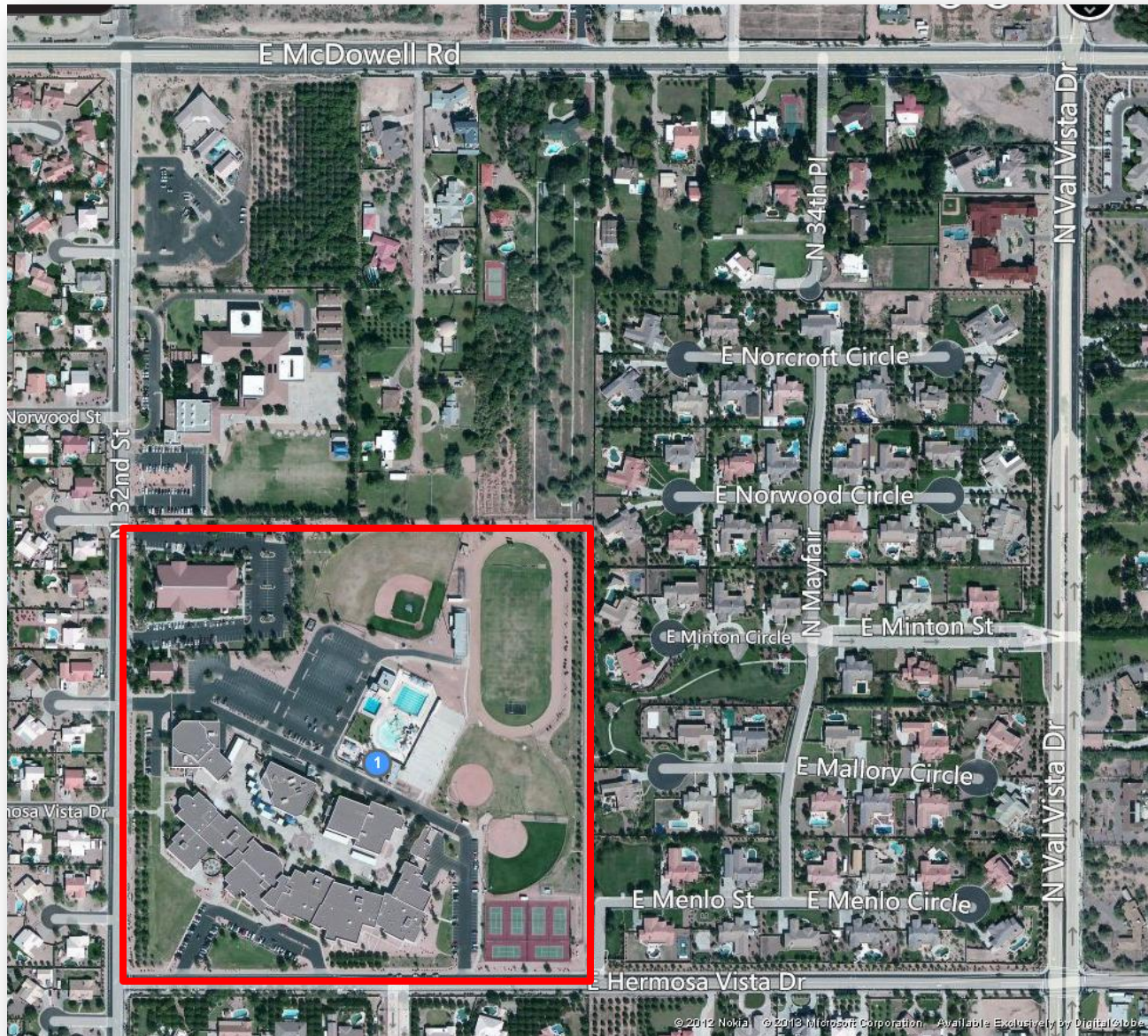
“Examples might be... to consider reductions in the retail parking requirements.”

Gilbert Jr. High School, Population 674



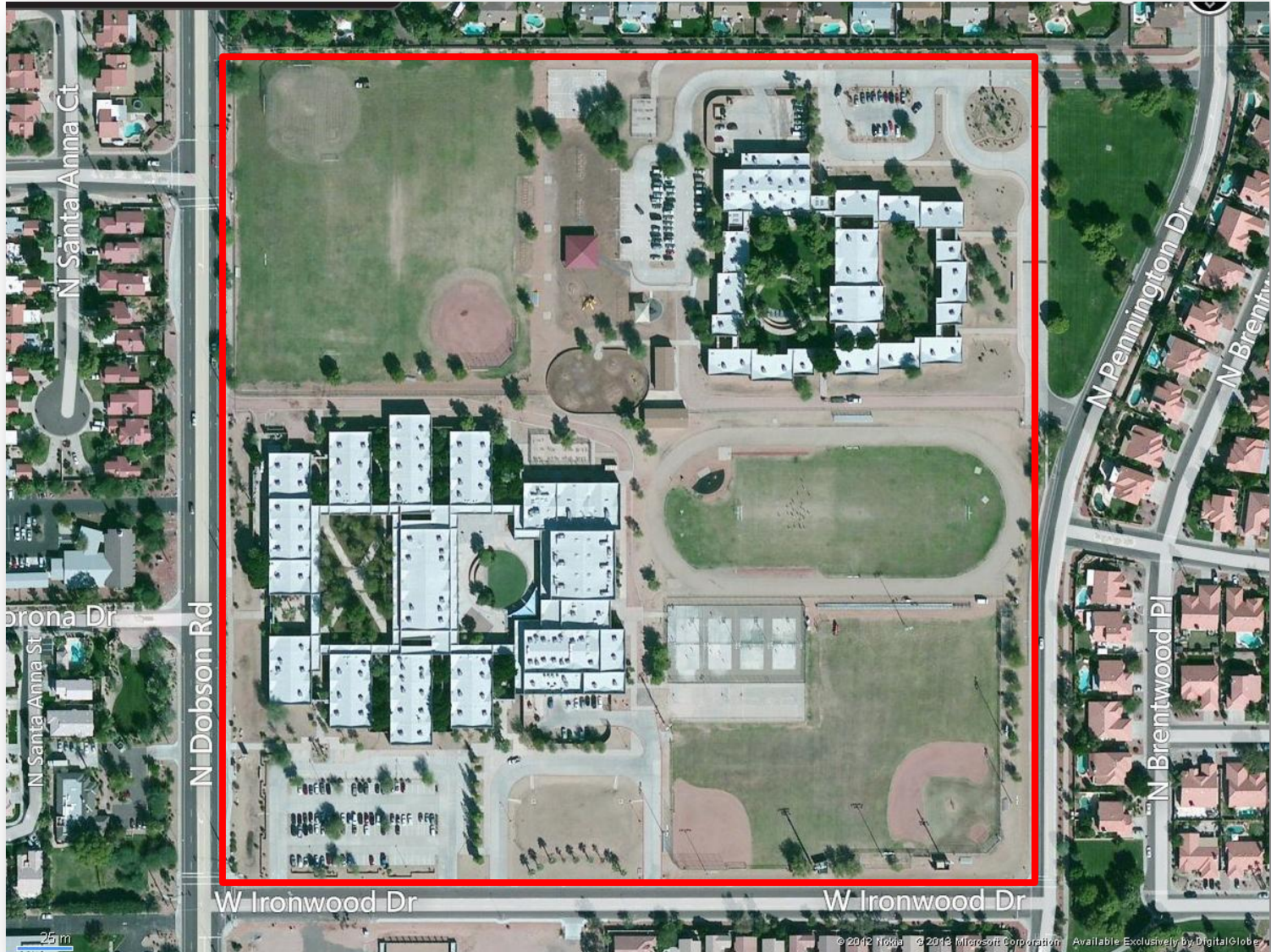
(Gilbert, Az)

Stapley Jr. High School, Population 768



(Mesa, Az)

John Andersen Jr. High School, Population 877



(Chandler, Az)



Queen Creek Middle School, Population 773



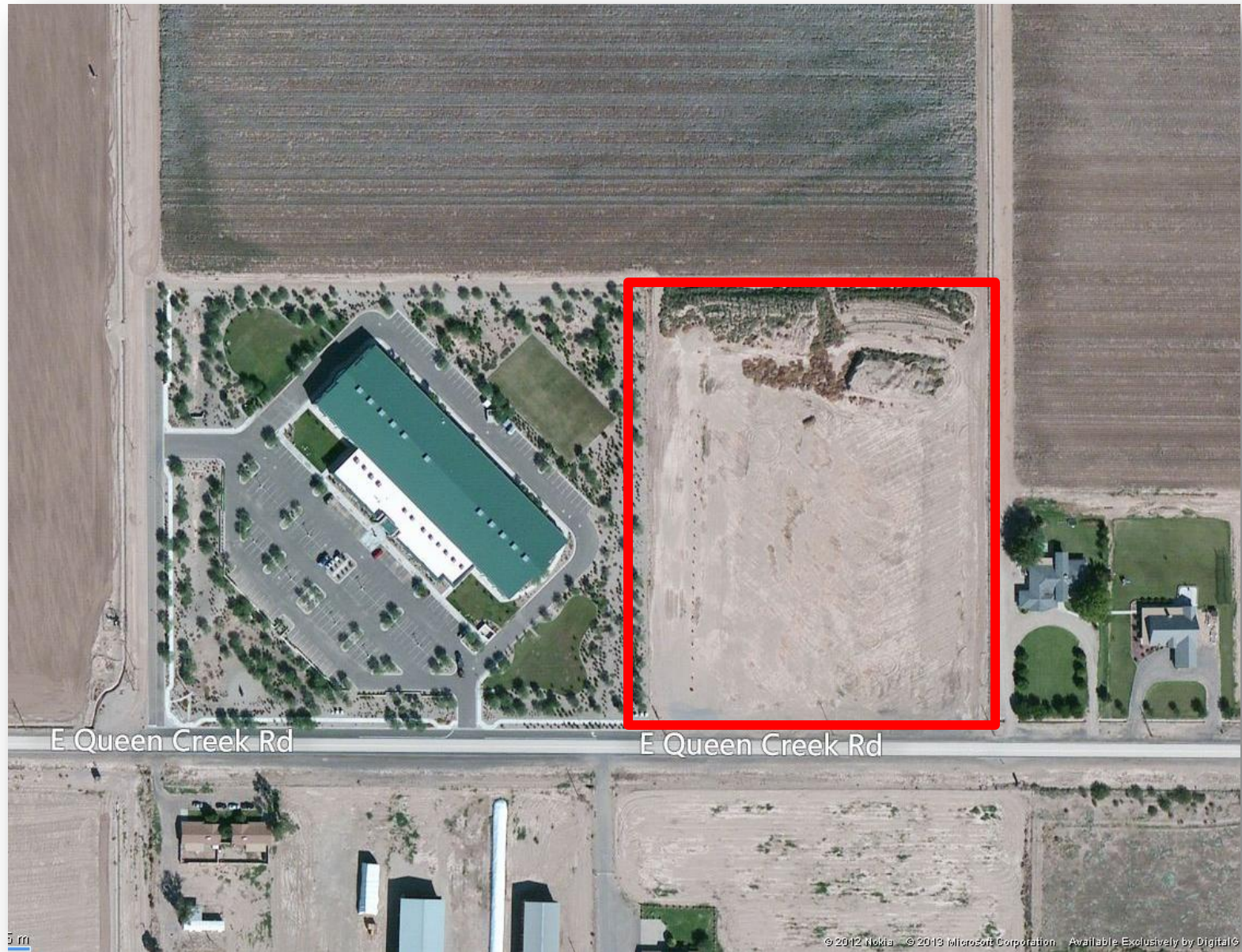


ARS Statues

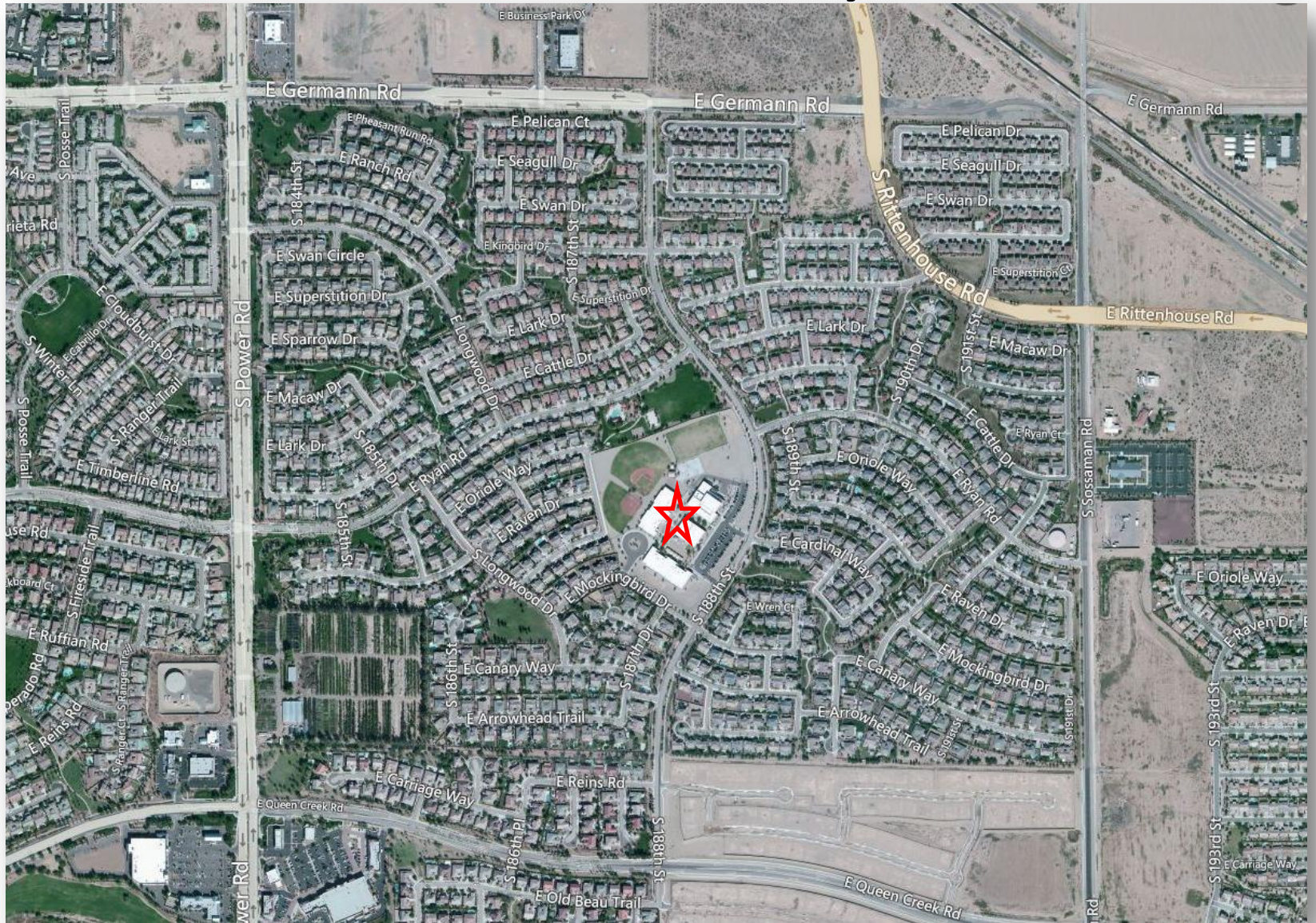
15-189.01. Charter schools; zoning; development fees

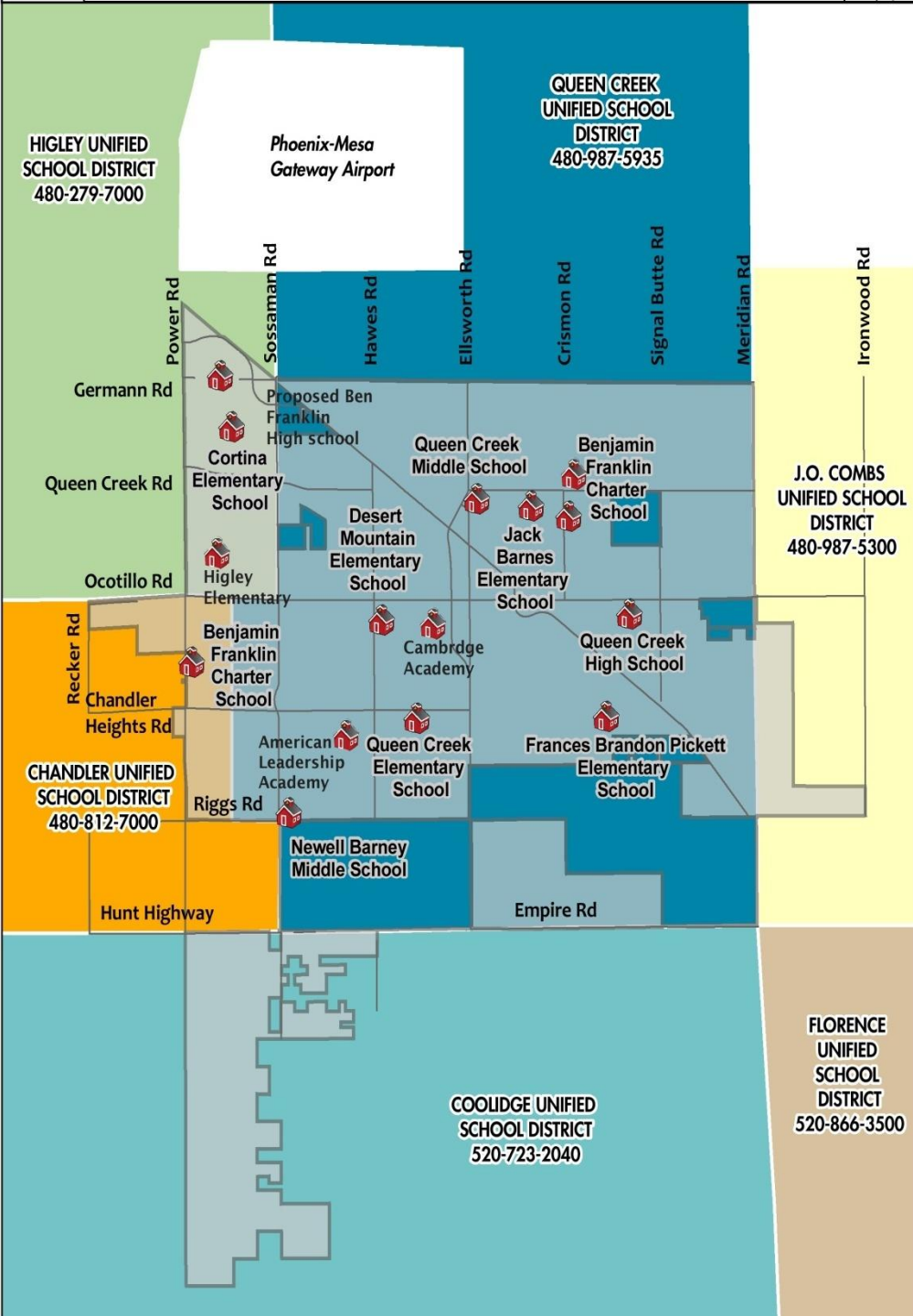
- B. A charter school is **subject to** the same level of oversight and **the same ordinances, limitations and requirements**, if any, that would be applicable to a school that is operated by a school district.

Ben Franklin Charter School



Cortina Elementary School





What Next?

- **Meet** with QCUSD & Charter School representatives to review parking at Queen Creek schools
- **Collect information** from other communities
- **Propose** zoning change: Planning Commission, then Council consideration