



# GPA12-051

## Signal Butte and Meridian Road Realignments

Modification of the  
Transportation and Circulation Element



# Alignment of SR 24

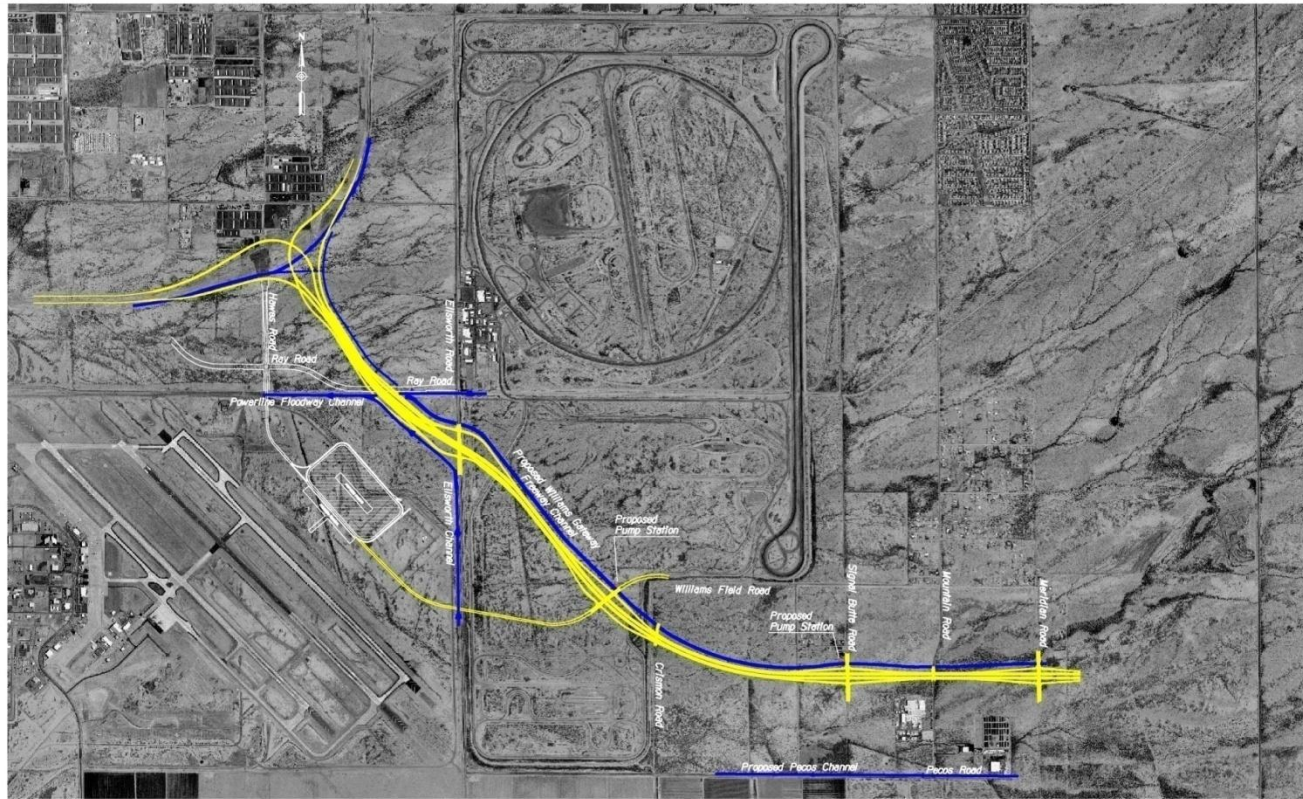


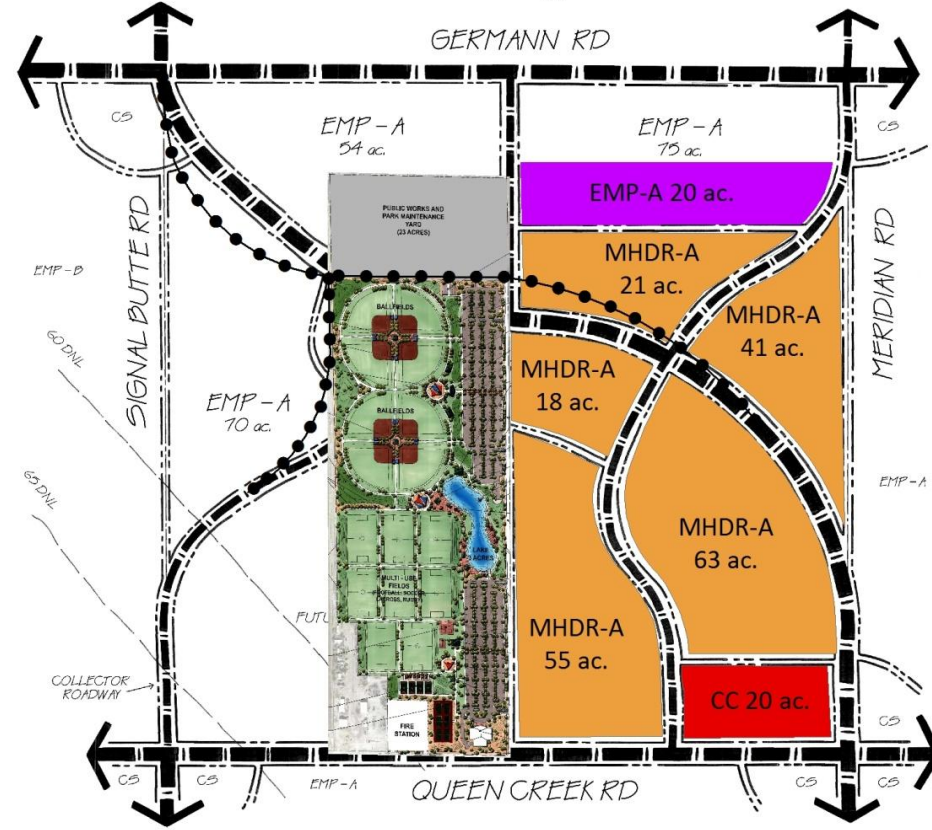
FIGURE 3  
CONCEPTUAL ALIGNMENT PLAN

WILLIAMS GATEWAY FREEWAY ALIGNMENT AND ENVIRONMENTAL OVERVIEW STUDY

DMJM HARRIS | AECOM  
2777 E. CAMELBACK RD  
SUITE 200  
PHOENIX, AZ, 85016-4302  
1602 331-2777

# GP09-58 April 21, 2010

## Staff Alternative Road Design and Land Use Plan

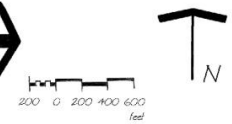


### LEGEND

- MHDR - A: Medium High Density Residential (0 - 5 DU/AC)
- MHDR - B: Medium High Density Residential (0 - 8 DU/AC)
- MU: Mixed-Use
- CC: Community Commercial
- CS: Commercial Services
- EMP - A: Employment Type A
- EMP - B: Employment Type B
- R/C/P: Recreation - Conservation - Parks

### LAND USE DATA

Land Use	Acreage (Gross) (Approx)
MHDR - A	148
MHDR - B	99
MU	12
CC	20
EMP - A	199
R/C/P	130
PARK EXPANSION	6
<b>Total</b>	<b>614</b>

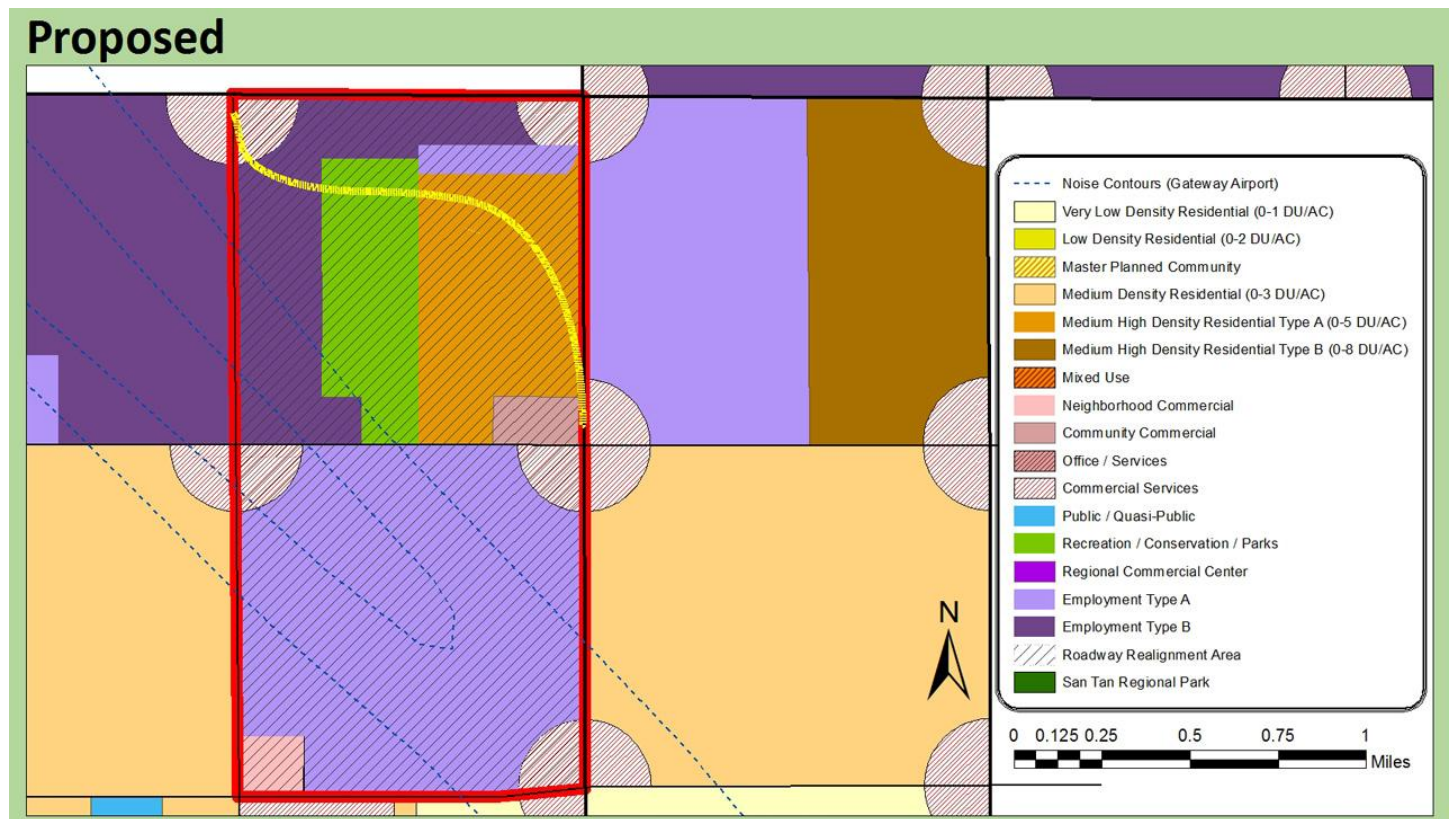


# BARNEY FARMS AREA PLAN

SIGNAL BUTTE - MERIDIAN REALIGNMENT CONCEPT PLAN      QUEEN CREEK, ARIZONA



# Signal Butte & Meridian Road Realignment



# Recommendations

- Staff Recommendation - approval as proposed
- Transportation Advisory Committee Recommendation – approval as proposed
- Planning and Zoning Commission recommendation – Approval as proposed



TOWN OF  
**QUEEN CREEK**  
ARIZONA

Questions?

