



TOWN OF
QUEEN CREEK
ARIZONA

Town Center Access Management Plan

Angled Parking

Troy White- Public Works Division Manager
Bill Birdwell- Traffic Engineer Analyst

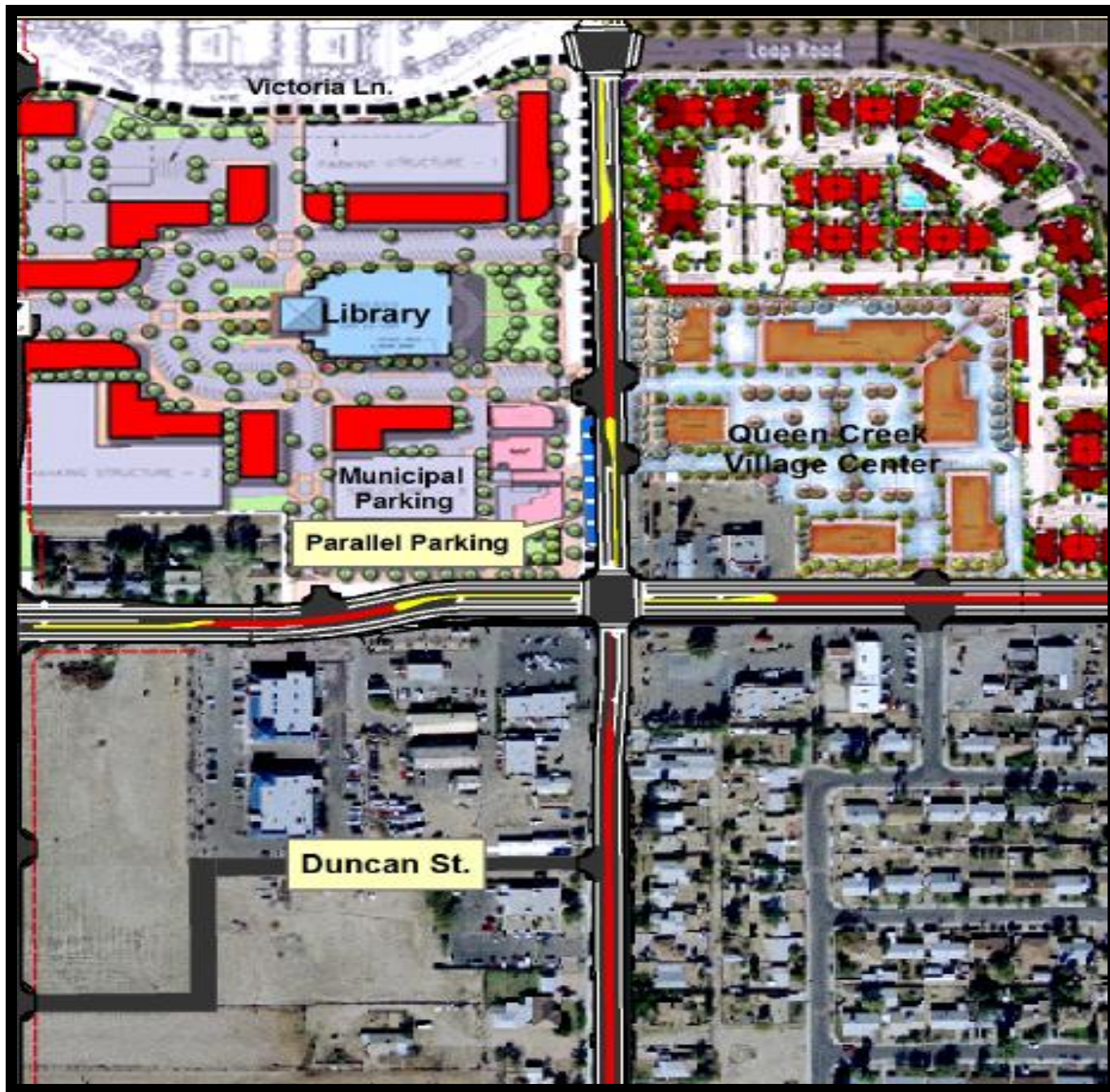
August 15, 2012





Discussion

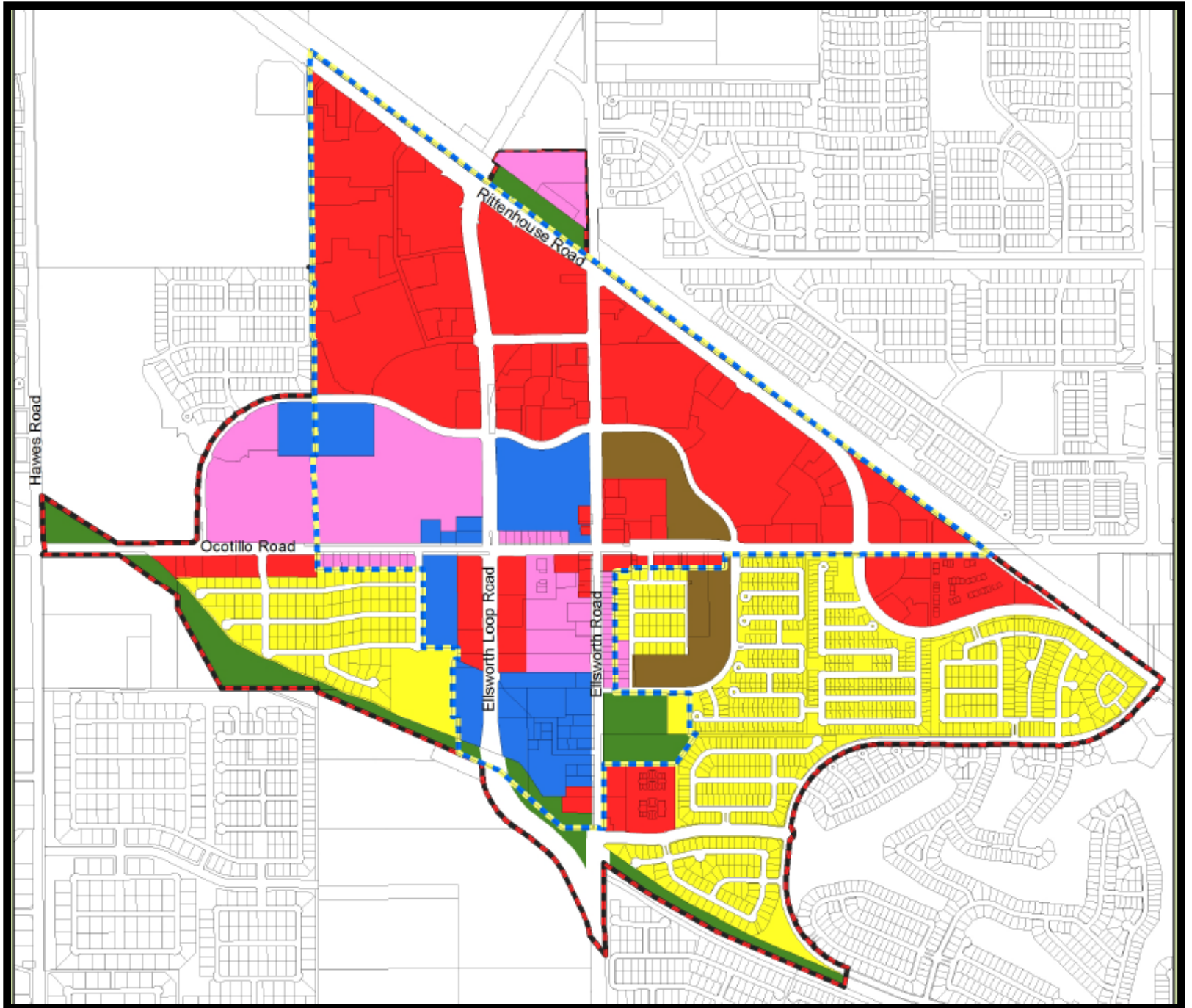
- Should Council Modify the Town Center Access Management Plan (TCAMP) approved by Council in 2009 to allow angled parking in Town Center
- Parallel parking is the only on-street parking called for in the TCAMP and only along Ellsworth Road between the Library and Sierra Park Blvd.
 - Some areas of straight-in parking are grandfathered in until such time road improvements are completed



TAC Recommendation

- Allow angled parking anywhere in Town Center where:
 - sufficient Right-of-Way exist, and
 - design standards can be met





Staff Recommendation

Leave policy as currently approved in the Town Center Access Management Plan

- **Better Visibility**

- Parallel Parking provides better visibility for all drivers when compared to angled parking

- **Traffic Volumes and Speeds**

- Traffic volumes and posted speeds are to remain lower along Ellsworth Road from the library to Sierra Park Blvd.

- **Internal Parking**

- Future Development will provide their own internal parking; unlike existing businesses fronting onto Ellsworth Road

- **Sufficient Right-of-Way**

- Sufficient ROW for angled parking will not exist when ultimate improvements are made along any Town Center Roadway unless:
 - Town acquires additional Right-of-Way for Town Projects
 - Developers of undeveloped Town Center parcels donate additional Right-of-Way at time of development



Questions for Council if TAC Recommendation is Approved

Do we acquire more ROW on Ellsworth Road or Redesign Ellsworth Road to allow for angled parking?

Do we allow Developers of undeveloped parcels in the Town Center to remove and modify existing curb lines if they choose to install angled parking?

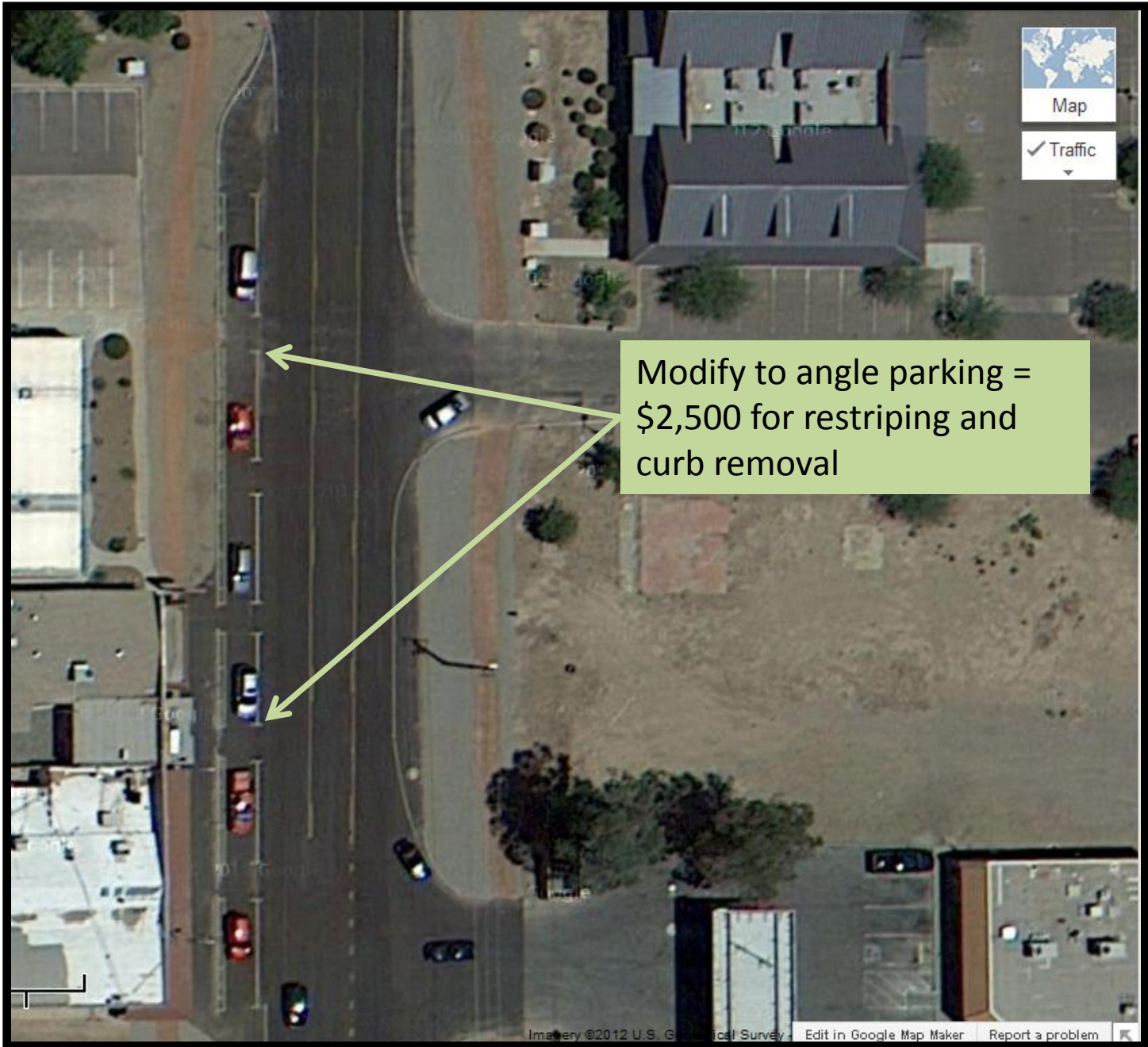
Do we rule out Roads that have higher traffic volumes and speed limits, i.e Ellsworth Loop Road, Ocotillo Road and Rittenhouse Road?



Alternative Recommendation

Allow angled parking:

- Where sufficient Right-of-Way exist,
and
- Where design standards can be met
- Until such time ultimate road
improvements are completed



Map
✓ Traffic
▼

Modify to angle parking =
\$2,500 for restriping and
curb removal

