

TOWN OF
QUEEN CREEK
ARIZONA

Hunt Highway Widening Project Pinal County

August 1, 2012

Paul Gardner
Utility Director

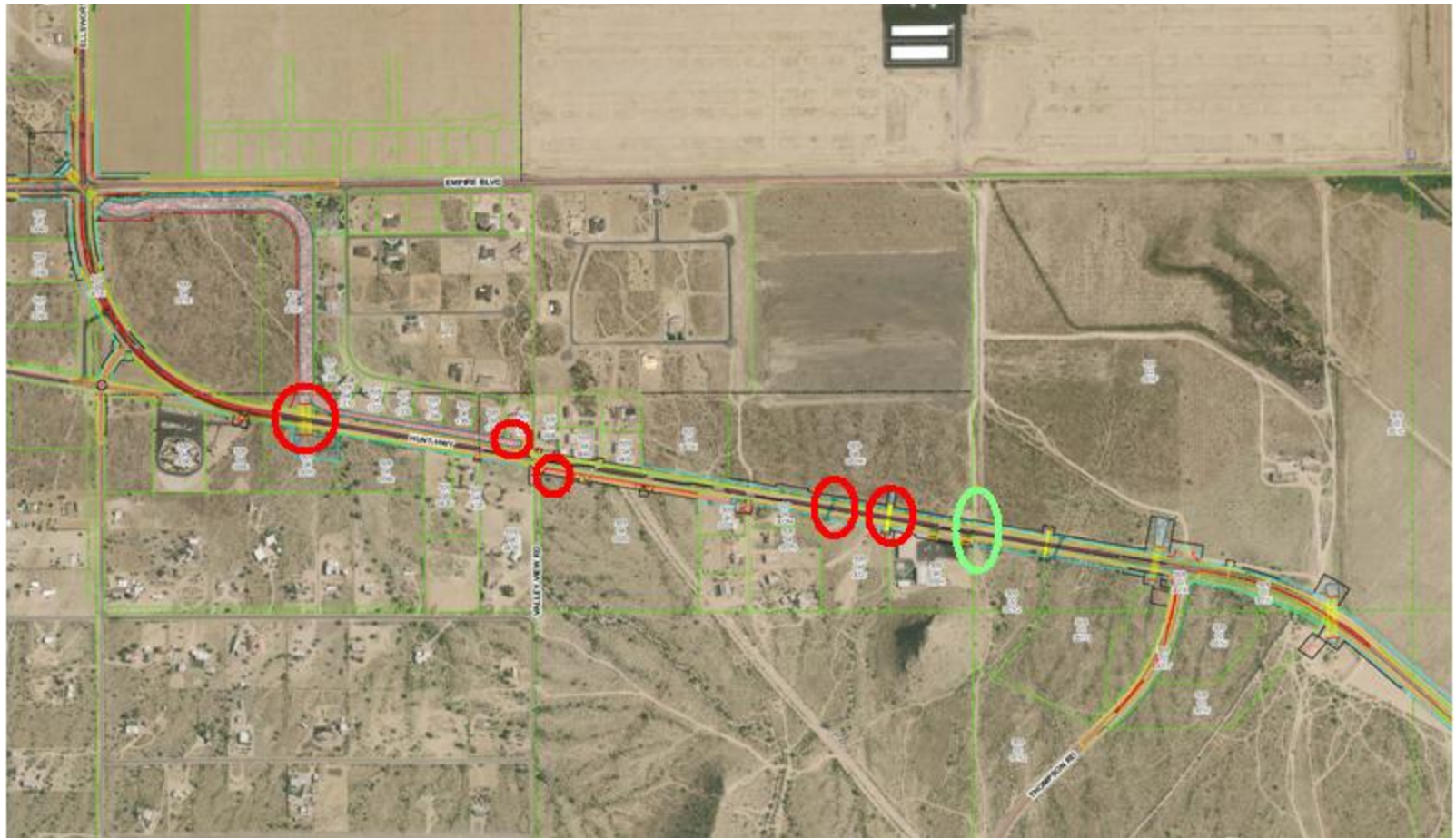


Phase I - Scope

- Phase I – Empire to Thompson Rd
 - 5-lane road, two each direction, and center raised median
 - Drainage channel design (Sonoqui Wash)
 - J-curve commercial property (now apart of MCFCD's Sonoqui Wash PhIIIA2 project)
 - Drainage portions on both sides of Hunt to from Thompson to J-curve
- 20,000+ on average vehicles per day



Phase I - Project Limits



Phase I - Schedule

■ Funding

– Spring 2011

- Awarded \$5Mil in Federal Funds through CAAG-ADOT
- Additional \$500k earmark from Congressman Kirkpatrick

■ Reimbursement Provisions

- Pinal Highway Department to deposit \$118,870.50 into Water Improvement District
- Upon completion of water improvements the Towns utility department will be reimbursed fully



Work to be done

- Construction
 - Portions of Hunt highway will be raised in excess of 7-feet
 - Installing 3 DIP sections totaling 480-feet of pipe of both 6 & 8-inch pipe
 - Relocating 13 existing services
 - Installing 100-feet of future 12-inch for Crismon Road crossing
 - Installing Fissure crossing of 50-feet of 8-inch pipe



Maricopa County Improvement District = yellow

Pinal County Improvement District = green

