



TOWN OF
QUEEN CREEK
ARIZONA

Grand Opening

Sonoqui Wash Phase IIA & Riggs Road Bridge



Presented by:
Troy White, Public Works Division Manager

June 6, 2012



Sonoqui Wash Phase IIA & Riggs Road Bridge

The Project Included:

- The channelization of Sonoqui Wash from Chandler Heights Road to Riggs Road, and from Riggs Road to Ellsworth Road.
- A Bridge over Riggs Road and Box Culvert of Hawes Road removing two low flow crossings.
- The undergrounding of SRP power lines
- Installation of multi-use components such as equestrian and pedestrian trails – link to HPEC.
- Aesthetic enhancements to bridge, culverts, and outlets.



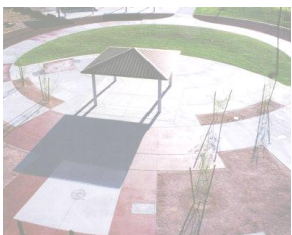
Sonoqui Wash Phase IIA & Riggs Road Bridge

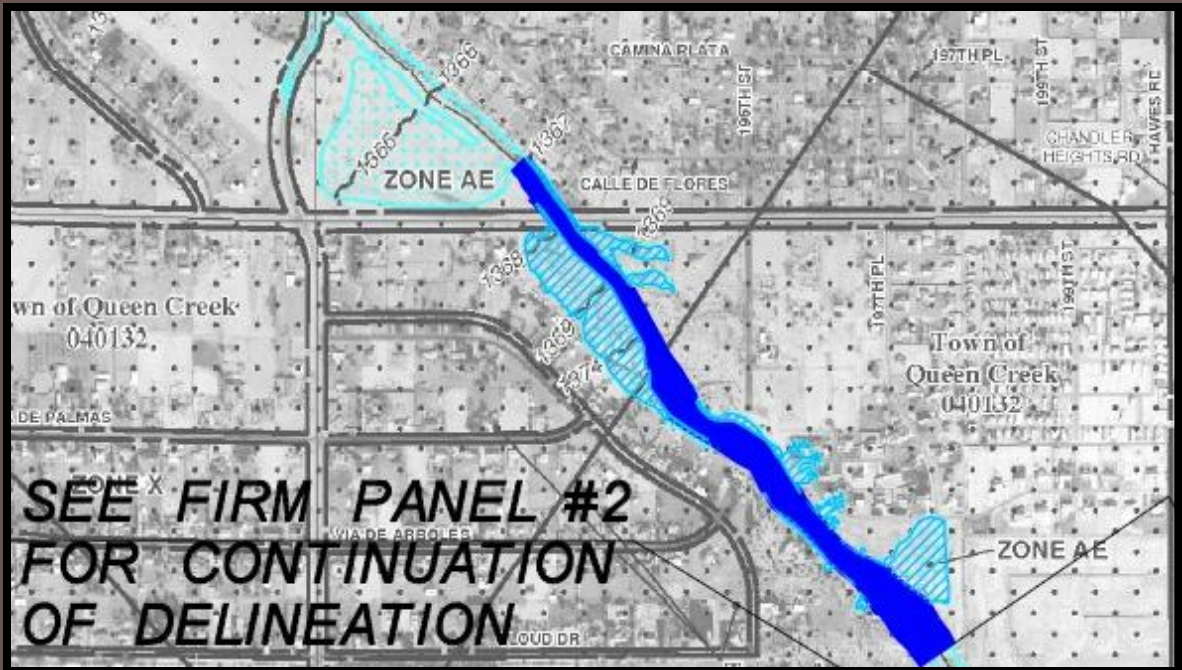
- Regional Partnership

- Queen Creek
- Maricopa County Flood Control District - Lead Agency
- Maricopa County Department of Transportation - Bridge

- Town Staff

- Tom Narva- Project Manager
- Chris Dovel- Project Oversight
- Rich Purcell- Trail Standards
- Mike Johnson and Kenny Secrist- Water Relocations
- Jan Martin- Bridge Value Engineering







Riggs Road/Sonoqui Wash Crossing

Before



After





Northeast Corner of Hawes and Riggs Roads

Before



After





Hawes Road/Sonoqui Wash
Crossing

Before



After





Chandler Heights Bridge
Looking Southeast

Before



After



West of Hawes Road Looking North



West of Hawes Road Looking Southeast



West of Hawes Road – Box Culvert View



East of Hawes Road Looking Southeast



On Riggs Road Bridge Looking Northwest



South of Riggs Road Looking Northwest

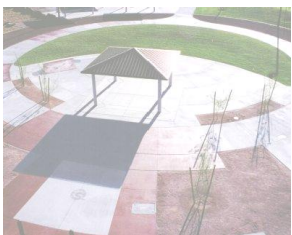


South of Riggs Road Looking Northeast



West of Ellsworth Road Looking West





Grand Opening
June 19, 2012 at 9:00 a.m.
New Marsh Road
Just South Riggs Road Bridge



Public Welcome