

TOWN OF
QUEEN CREEK
ARIZONA

Siete Solar
by



RZ11-040 / SP11-070 / CU11-071






Siete Solar

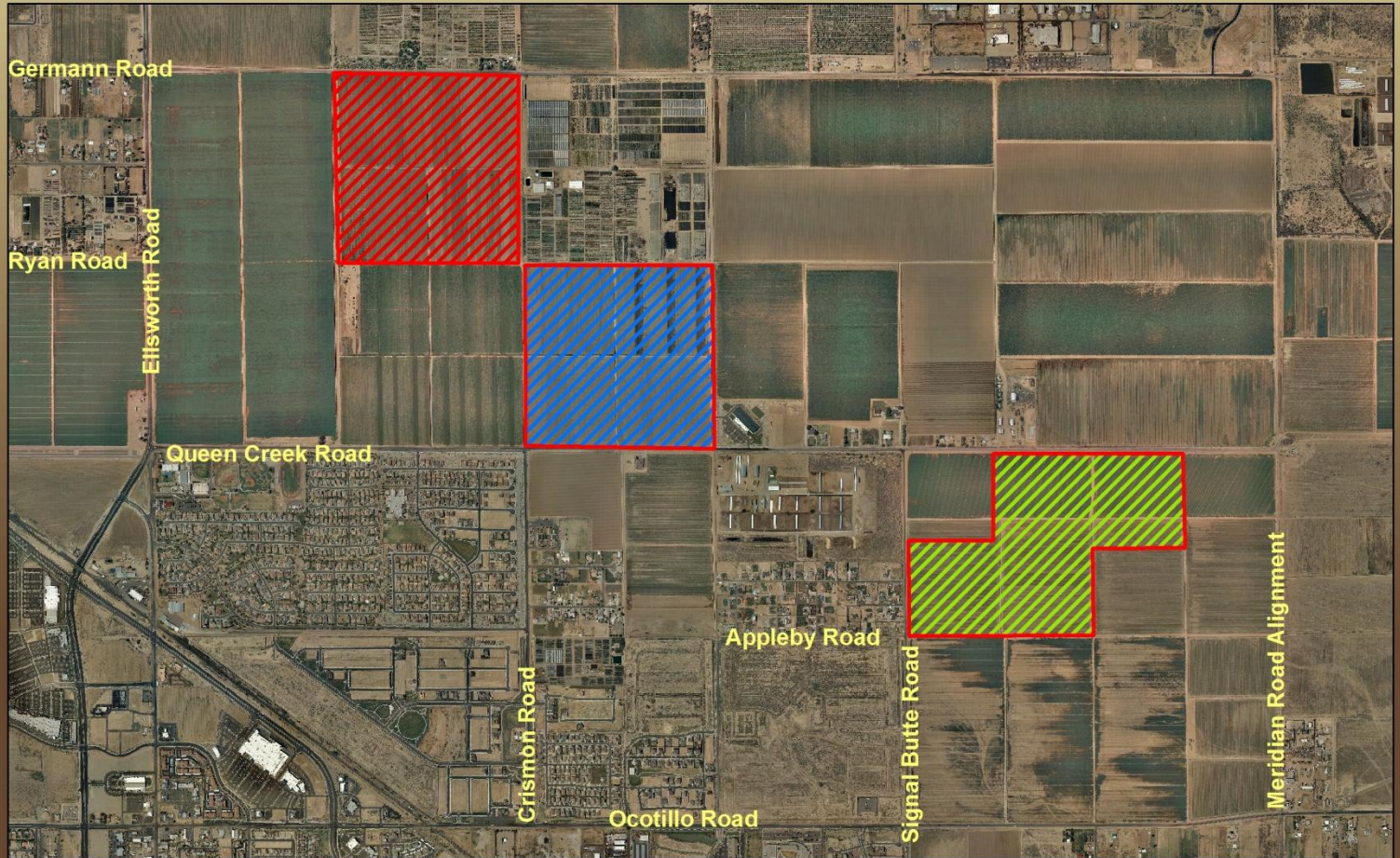




Proposed Solar Facilities

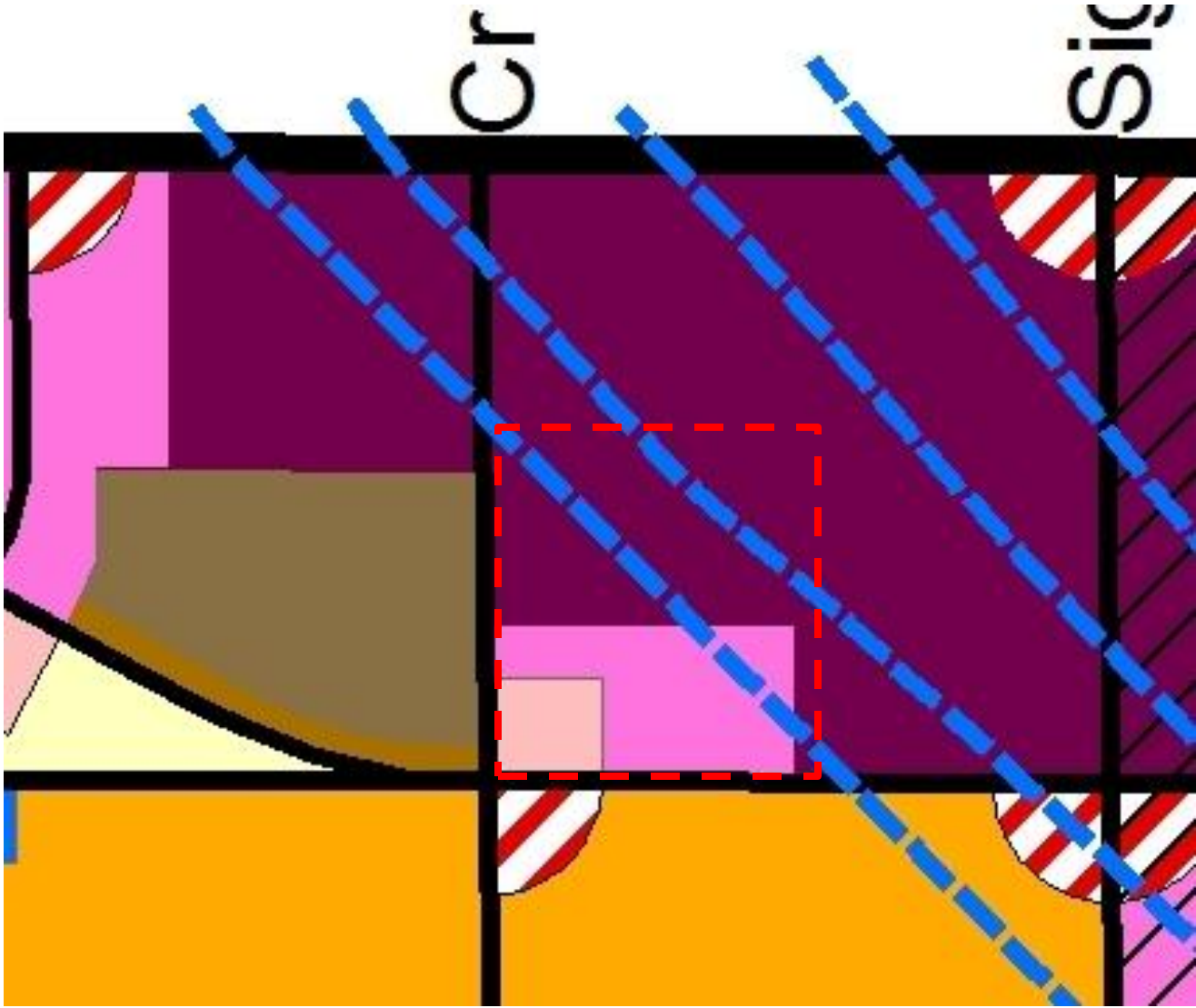


 Iberdrola Renewables (On Hold)  Juwi Solar Inc  Recurrent Energy (Withdrawn)



Map by Dave Williams, Senior Planner

General Plan



Siete Solar

- 160 Acres Total
- Photo Voltaic Solar Power Generation
- 20 Megawatts
- Rezoning from R1-43 to C-2 and I-2
- Requesting PAD Deviations for;
 - Open Space Definition
 - Landscape percentage requirements
 - Tree reductions along Merrill Road due to BOR Irrigation easement



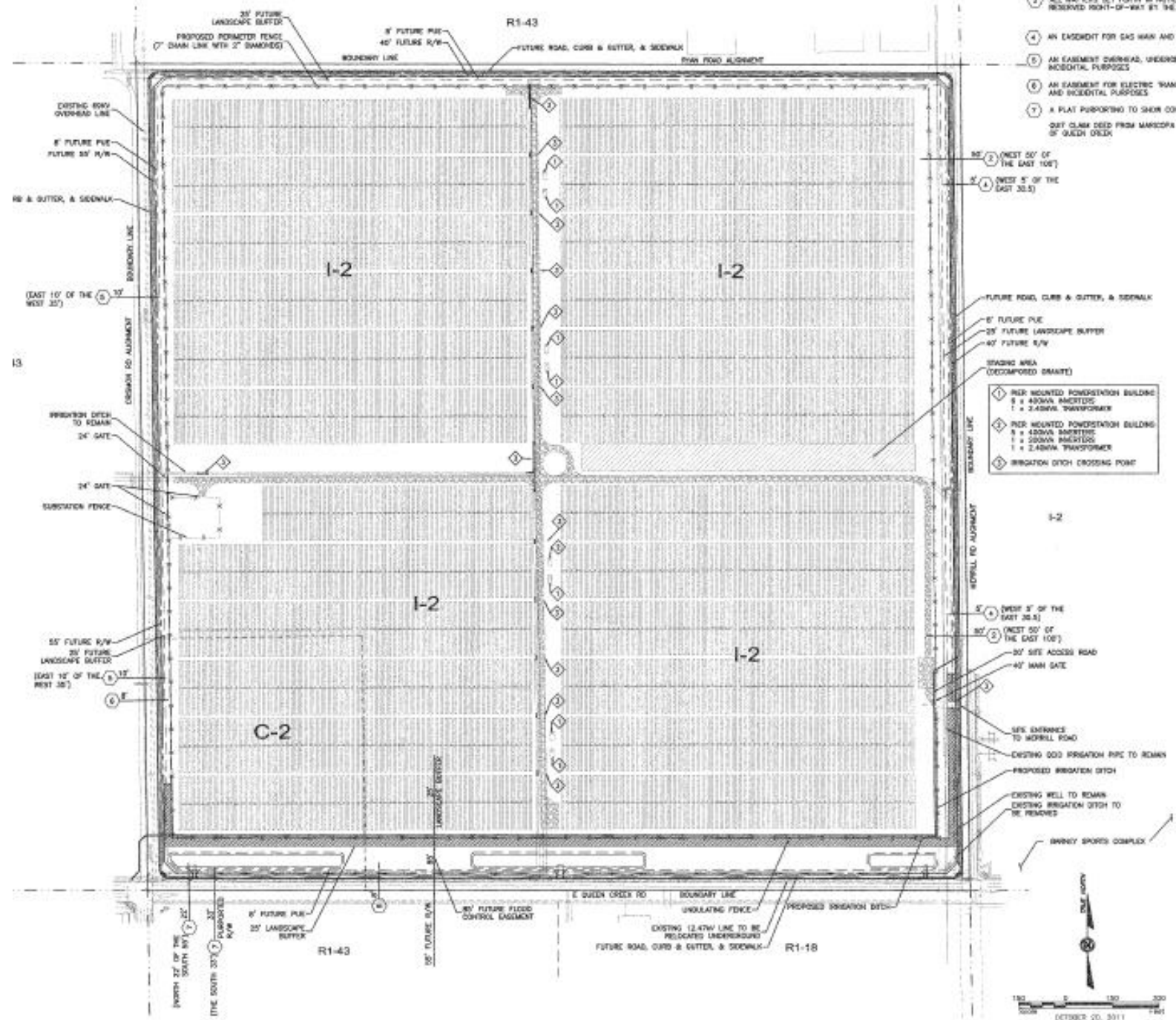
Siete Solar



QUEEN CREEK SOLAR FACILITY

SCHEDULE "N" - EXCEPTIONS

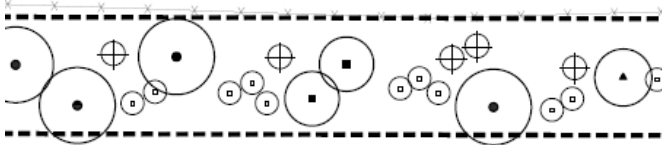
- ① ALL MATTERS SET FORTH IN THIS RESERVES RIGHT-OF-WAY BY THE
- ④ AN EASEMENT FOR GAS MAIN AND
- ⑤ AN EASEMENT OVERHEAD, UNDER AND INCIDENTAL PURPOSES
- ⑥ AN EASEMENT FOR ELECTRIC MAIN AND INCIDENTAL PURPOSES
- ⑦ A PLAT PURPORTING TO SHOW CO DIRT CLAIM DEED FROM MARICOPA OF QUEEN CREEK



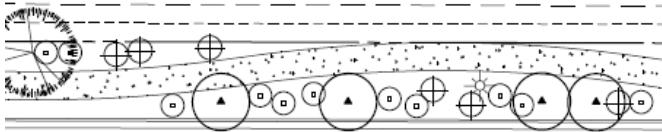
- ① PWR MOUNTED POWERSTATION BUILDING
8 x 400VA AMPLIFIERS
1 x 2.500VA TRANSFORMER
- ② PWR MOUNTED POWERSTATION BUILDING
8 x 400VA AMPLIFIERS
1 x 2.500VA TRANSFORMER
- ③ IRRIGATION DITCH CROSSING POINT



Landscaping



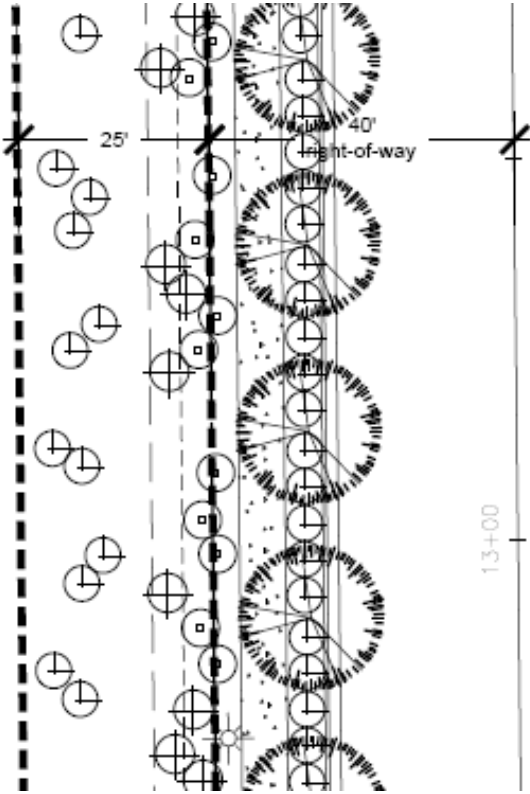
IMITS OF LANDSCAPING



Y

Queen Creek Rd.

34+00 35+00



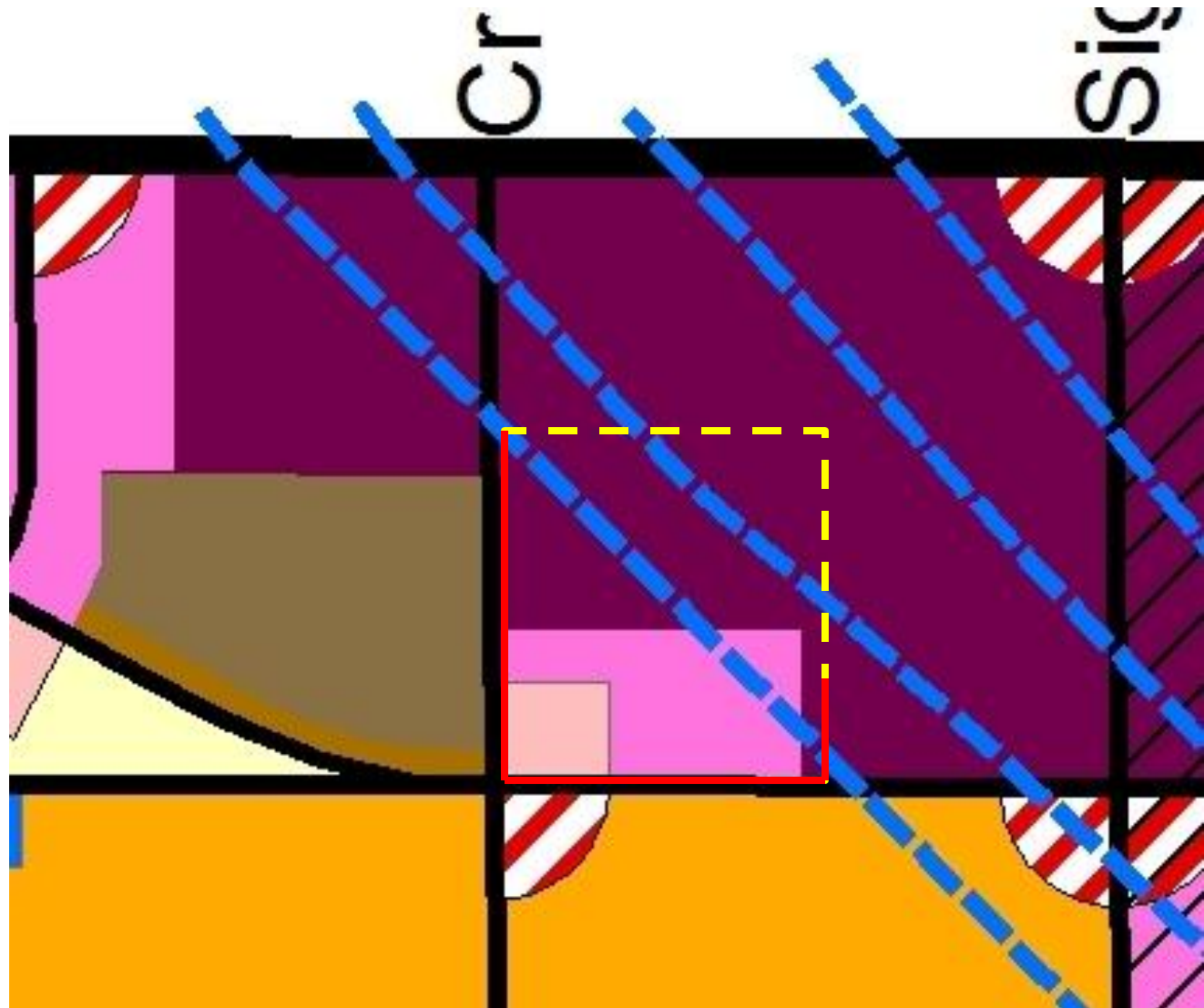
Merrill Rd

13+00

Siete Solar



Fencing Plan



Siete Solar PAD Deviations

- 1. Open Space
 - 2. Percentage of required landscaping
 - 3. Reduction in Trees along Merrill Road.
-
- The Planning Commission recommended approval of these deviations with the attached Conditions of Approval.



Siete Solar

Questions?

Thank You.

