

TOWN OF
QUEEN CREEK
ARIZONA

Update on ADOT Freeway Corridor Alignments

December 7, 2011



SR 24 (previously 802) Adopted Alignment



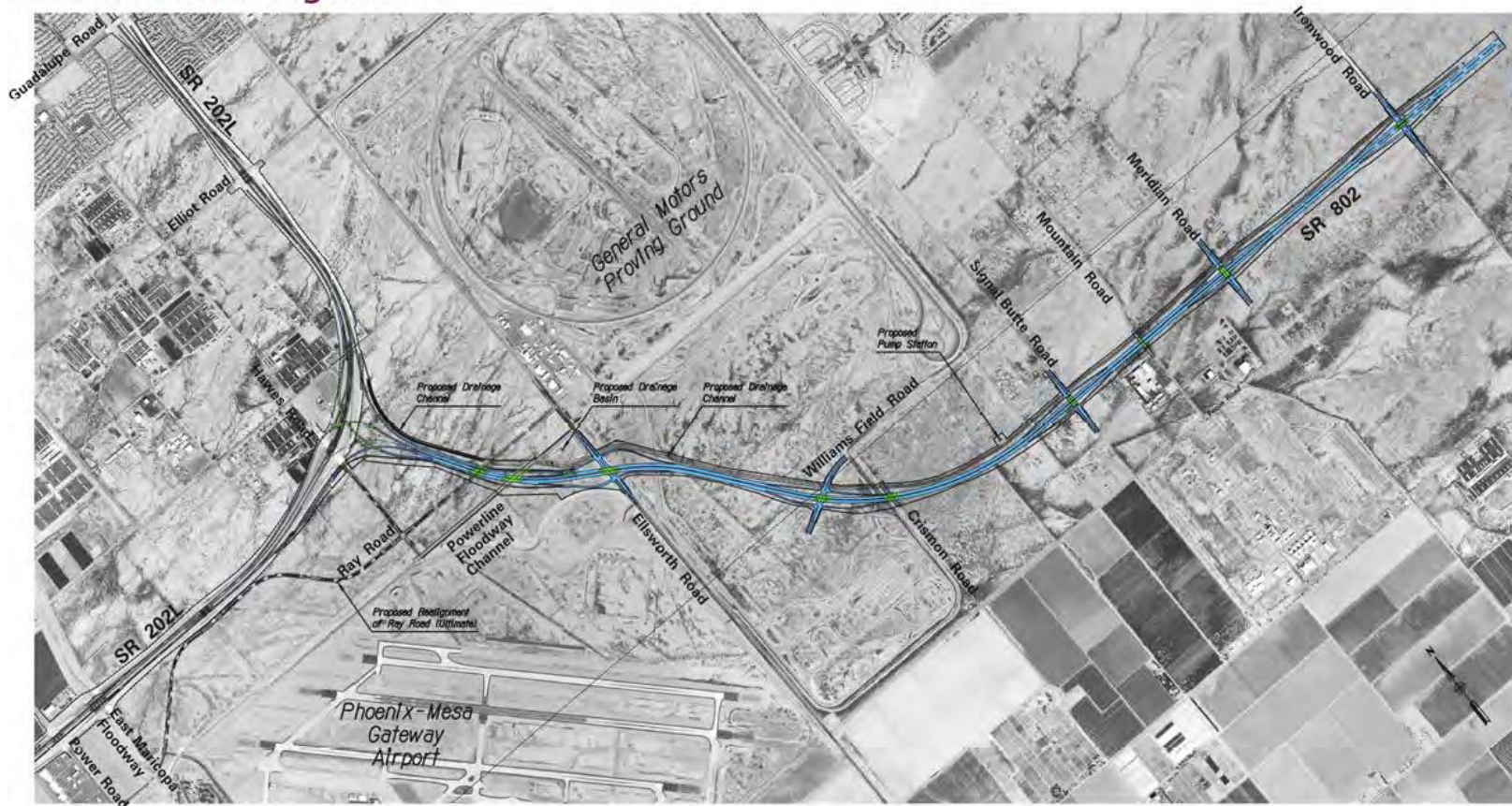
Federal Highway Administration

State Route 802

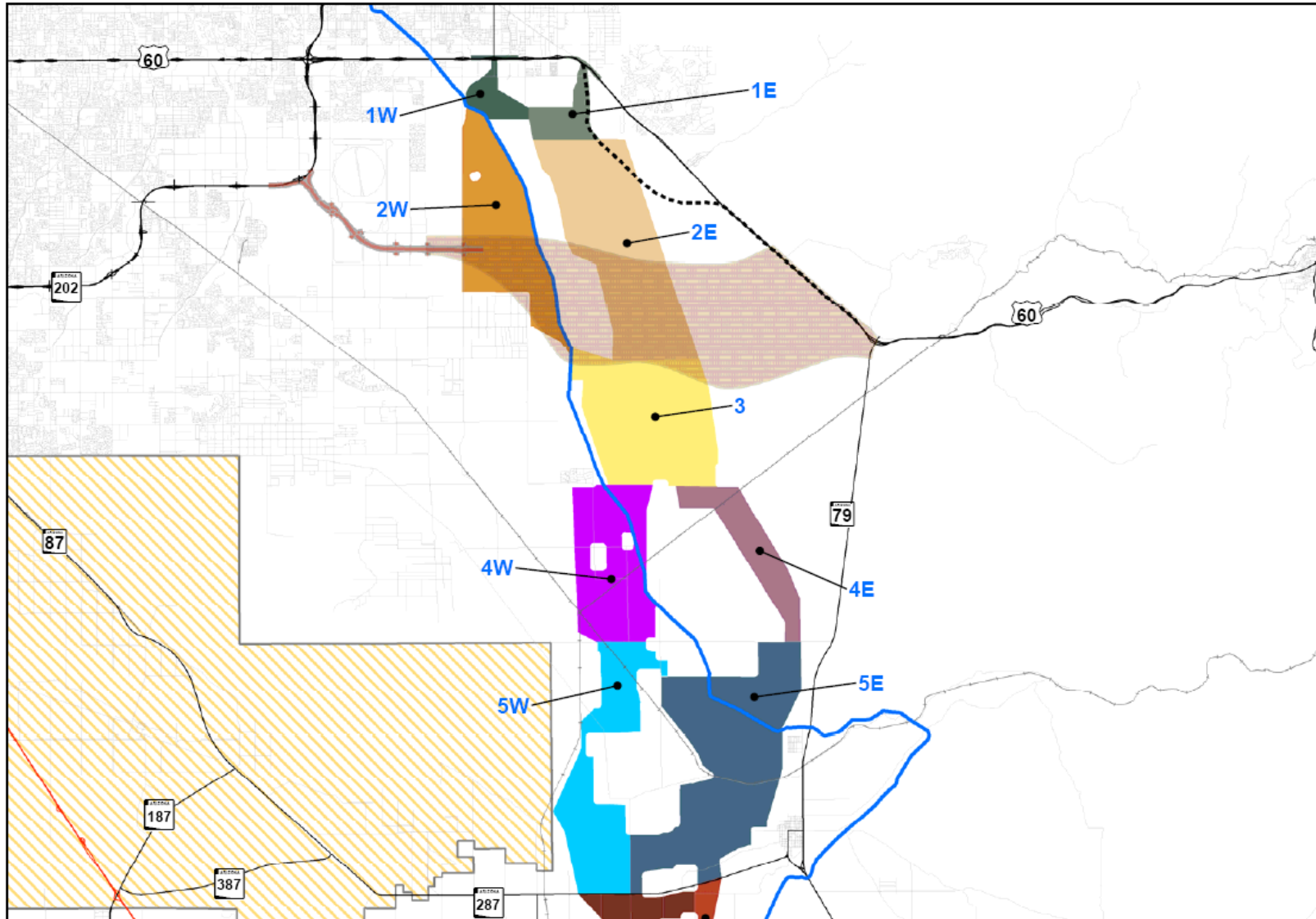
Loop 202 (Santan Freeway) to Ironwood Road

802 MA 999 H6867 01L NH-802-A(AUG)

Recommended Alignment



N-S Freeway Initial Corridor Refinements



Early concepts for SR 24 east of Ironwood



Latest Pinal County concept



TAC Recommendations



Next Steps

- Receive input from Town Council and finalize comment forms to be sent to ADOT per Council direction
- Attend ADOT Public Workshop – Monday, December 12, 6pm-8pm at Walker Butte Elementary School
- Continue to work with regional partners in sending a consolidated agency corridor preference to ADOT (Pinal County; Apache Junction; possibly Florence; Coolidge; Eloy)





Questions / Comments ?